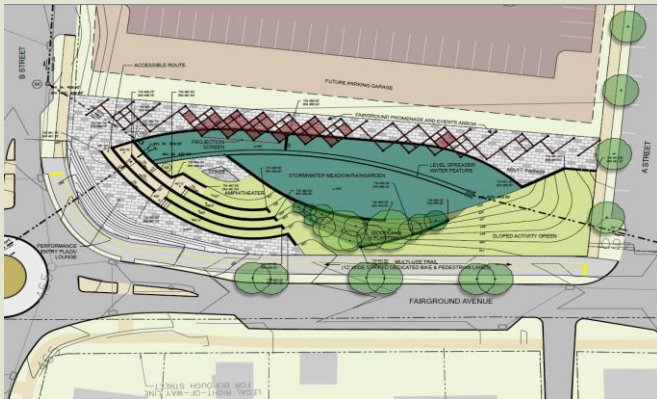




Brownfields to Playfields Pilot Project

Fairground Avenue Linear Park Carlisle Borough, Cumberland County



The stormwater park project is located on the former IAC/Masland Carpet industrial site as an important part of Carlisle’s urban redevelopment plan. The first phase of two acres of open green space will be built in 2017 to coincide with the first phase of mixed-use development which, when completed, will include new housing, retail stores, a hotel and restaurants.

The park will create an inter-connected linear park with pedestrian and bicycle trails, a public gathering space, spray park, rain gardens and other amenities. Its unique design includes an innovative stormwater management system to mitigate flooding problems and provide a positive environmental benefit for Carlisle’s Chesapeake Bay Pollutant Reduction Plan. The primary goal for the community plan is to ensure that the redevelopment “meshes” with the existing neighborhoods and the downtown.

Sources of Funding

- 2013 US EPA Area-Wide Planning Grant- \$200K
- 2015 US EPA Assessment Grant - \$400K
- 2016 US EPA Job Training Grant - \$200K
- 2015 DEP Growing Greener 2 - \$95K
- 2016 DCNR C2P2 grant – \$150K
- 2016 US TIGER grant - \$5M
- 2016 PennDOT Multimodal - \$2M & \$1.5M//\$380K
- DCED Community Dev Block Grant – \$80K
- Chesapeake Bay Trust - \$30K
- Federal NFWF - \$599K
- National Endowment of the Arts - \$10K



Approved Fairground Avenue Stormwater Park and Mixed-Use Redevelopment on the IAC/Masland Site