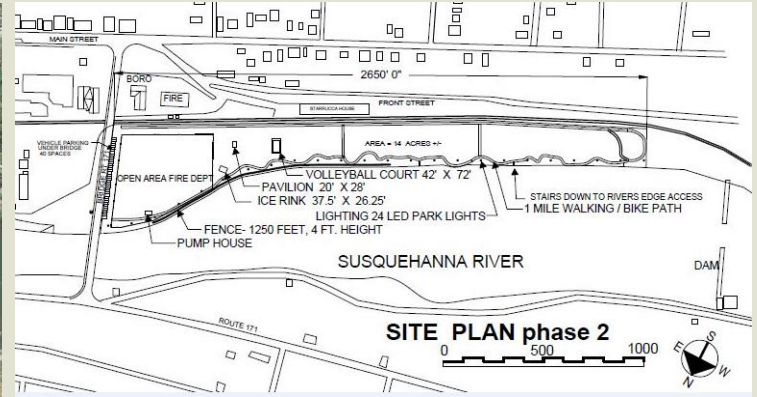




Brownfields to Playfields Pilot Project

Ira Reynolds Riverfront Park

Susquehanna Depot Borough, Susquehanna County



The project is located along the Susquehanna River on a portion of the former Erie Rail Yard site. Many public and private organizations have committed to develop a 14-acre community park with a pavilion, pedestrian trails, lighting and access to the river. Ira Reynolds Riverfront Park is close to the Priesthood Restoration Site, a historic site of the LDS Church.

The Department of Environmental Protection is currently addressing contaminated soils through an interim response action funded by the Hazardous Sites Cleanup Act. After the cleanup is completed, the park will be built utilizing C2P2 grant funding from the Department of Conservation and Natural Resources.

Sources of Funding

2016 DCNR C2P2 grant – \$250,000

2017 DEP Hazardous Sites
Cleanup budget (HSCA) – \$1.9 Million



Ira Reynolds



Circa 1970