



# pennsylvania

DEPARTMENT OF ENVIRONMENTAL PROTECTION

Office of Active and Abandoned Mine Operations

**SALEM CHURCH**

Abandoned Mine Reclamation Project  
Contract No. OSM 17(7070,7066)101.1

Bureau of Abandoned Mine Reclamation  
Rachel Carson State Office Building, 13<sup>th</sup> Floor  
400 Market Street  
Harrisburg, PA 17101

DEPARTMENT OF ENVIRONMENTAL PROTECTION  
OFFICE OF ACTIVE AND ABANDONED MINE OPERATIONS  
BUREAU OF ABANDONED MINE RECLAMATION

SALEM CHURCH  
ABANDONED MINE RECLAMATION PROJECT  
CONTRACT NO. OSM 17(7070,7066)101.1

FACT SHEET 1 of 3

**Location:** This project consists of two sites located in Bradford and Boggs Townships, Clearfield County.  
Site "A" is located approximately 2 miles southwest of the I-80/SR-970 interchange, near an access road at the intersection of Hogback Hill Road (SR 2027) and Wilson Road (TR 315), approximately 1 mile south of the village of Mineral Springs. LAT. (40° 59' 17") LONG. (-78° 21' 57"), Wallaceton Quad.  
Site "B" is located approximately 1 mile south of Bigler, PA and 1 mile northwest of Wallaceton, PA, near an access road off of Prospect Road (TR 673). LAT. (40° 57' 55.2") LONG. (-78° 18' 25.6"), Wallaceton Quad.

**Watershed:** Moshannon-Mosquito Creeks Watershed (D)

**Official Start Date:** June 6, 2014

**Contract Completion Date:** November 9, 2015

**Contractor:** Morgan's Excavating, LLC  
15408 Hill Valley Road  
Mount Union, PA 17066

**Property Owners:**

1. Delbert J. and Judy K. Wisor, West Decatur, PA
2. Sharon L. Folmar, Drifting, PA
3. John H. and Irene M. McBride, Clearfield, PA
4. Derek A. Walker, Bigler, PA
5. Heather M. McDanel and Beverly A. Lawhead, West Decatur, PA
6. Artie K. Baughman, West Decatur, PA
7. Althea Pusateri, Baltimore, MD

**Project Cost:** \$1,011,536.61 (Final Amount); \$944,819.35 (Bid Amount)

**Project Area:** 69.1 Acres

**Purpose:** To eliminate a public health and safety hazard by backfilling and grading abandoned mine lands in Bradford and Boggs Townships, Clearfield County.

**SALEM CHURCH  
ABANDONED MINE RECLAMATION PROJECT  
CONTRACT NO. OSM 17(7070,7066)101.1**

**FACT SHEET 2 of 3**

**Description:**

The two abandoned strip-mined sites, Site "A" and Site "B", are approximately three miles apart. The smaller 4.3-acre Site "A" is located one mile south of the village of Mineral Springs, and was mined prior to 1952. Reclamation consisted of re-grading and re-vegetating highwalls, pits, and mine spoils. The Site "A" Priority 1 Dangerous Highwall was approximately 35 feet in height and 540 feet in length. It was located within 40 feet of Wilson Road. One home lies within 75 feet of where the highwall existed and several other homes are within 500 feet. Most of the backfill material came from adjacent on-site spoils. However, this site lacked sufficient material required to properly backfill the highwall because the adjacent landowner was not interested in reclamation. Approximately 7,000 cubic yards of material from Site "B" were hauled three miles to Site "A" in order to complete the reclamation. Site "A" would not have been reclaimed if it were not for the joint project. The larger 62-acre Site "B" is located approximately 1 mile south of the town of Bigler. Site "B" was mined by Harbison-Walker Refractories, and then abandoned in 1970. Reclamation also consisted of re-grading and re-vegetating the highwalls, pits, and mine spoils. Site "B" was comprised of several Dangerous Highwall features totaling approximately 4,000 feet in length and ranging from 40 to 50 feet in height. There are six (6) residences located within 1,000 feet of where the highwalls existed, and the area was heavily used by ATV riders.

**Funding:**

Pennsylvania's Abandoned Mine Land Grant

**Project Management:**

Bureau of Abandoned Mine Reclamation  
Harrisburg Office  
717.783.2267

**SALEM CHURCH  
ABANDONED MINE RECLAMATION PROJECT  
CONTRACT NO. OSM 17(7070,7066)101.1**

**FACT SHEET 3 of 3**

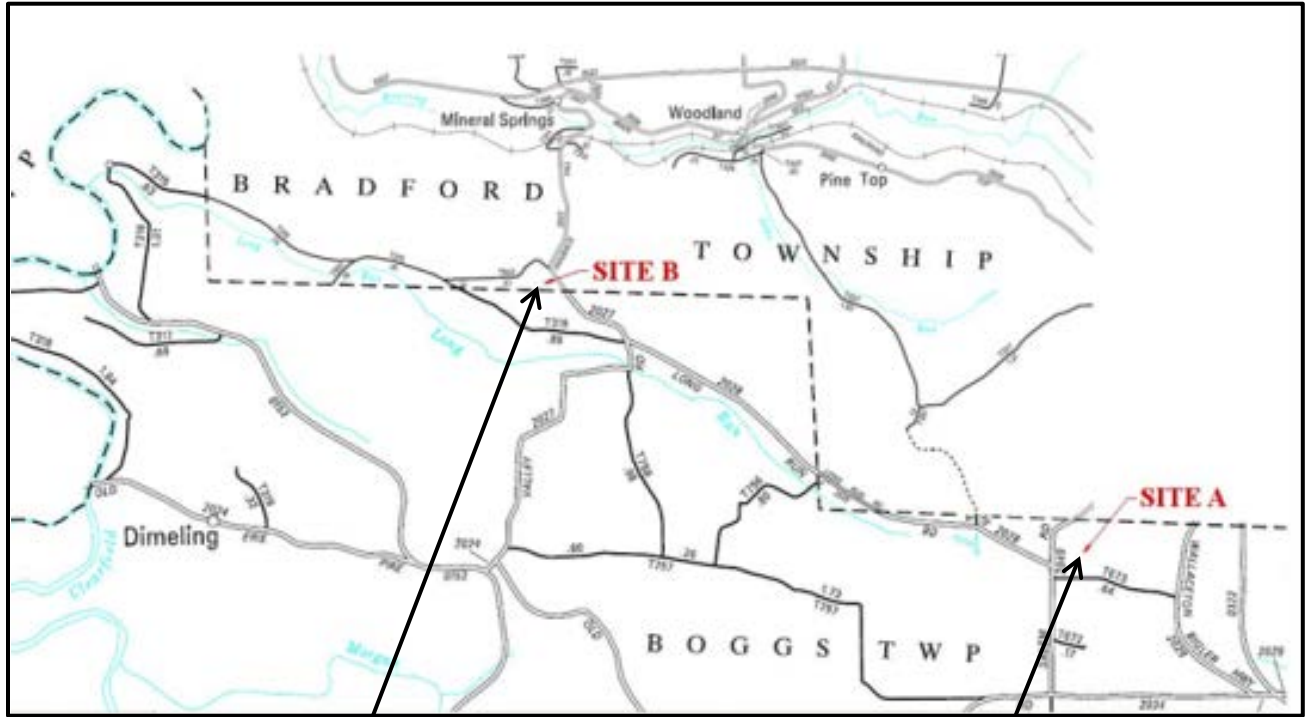
**Accomplishments:**

PRIORITY	AMLF #	AMLF KEYWORD	MEASUREMENTS						QUANTITY	UNIT
			ACRES	HEIGHT	LENGTH	COUNT	VOL.	FLOW		
2	7070-02	DH	-	-	620	-	-	-	620	LF
2	7070-03	DH	-	-	1,100	-	-	-	1,100	LF
3	7070-04	SA	10	-	-	-	-	-	10	Acres
2	7070-07	DH	-	-	1,800	-	-	-	1,800	LF
3	7070-08	SA	7	-	-	-	-	-	7	Acres
3	7070-10	SA	10	-	-	-	-	-	10	Acres
2	7070-11	DH	-	-	1,700	-	-	-	1,700	LF
3	7070-12	SA	12	-	-	-	-	-	12	Acres
2	7070-13	DH	-	-	550	-	-	-	550	LF
3	7070-14	SA	6	-	-	-	-	-	6	Acres
1	7066-02	DH	-	-	540	-	-	-	540	LF
3	7066-03	SA	6.5	-	-	-	-	-	6.5	Acres

AMLF = Abandoned Mine Land Feature  
 DH = Dangerous Highwall  
 SA = Spoil Area  
 LF = Linear Feet

SALEM CHURCH  
CONTRACT NO. OSM 17(7070,7066)101.1

Location Map



OSM 17(7070,7066)101.1  
Site "B"  
Bradford Township  
Clearfield County

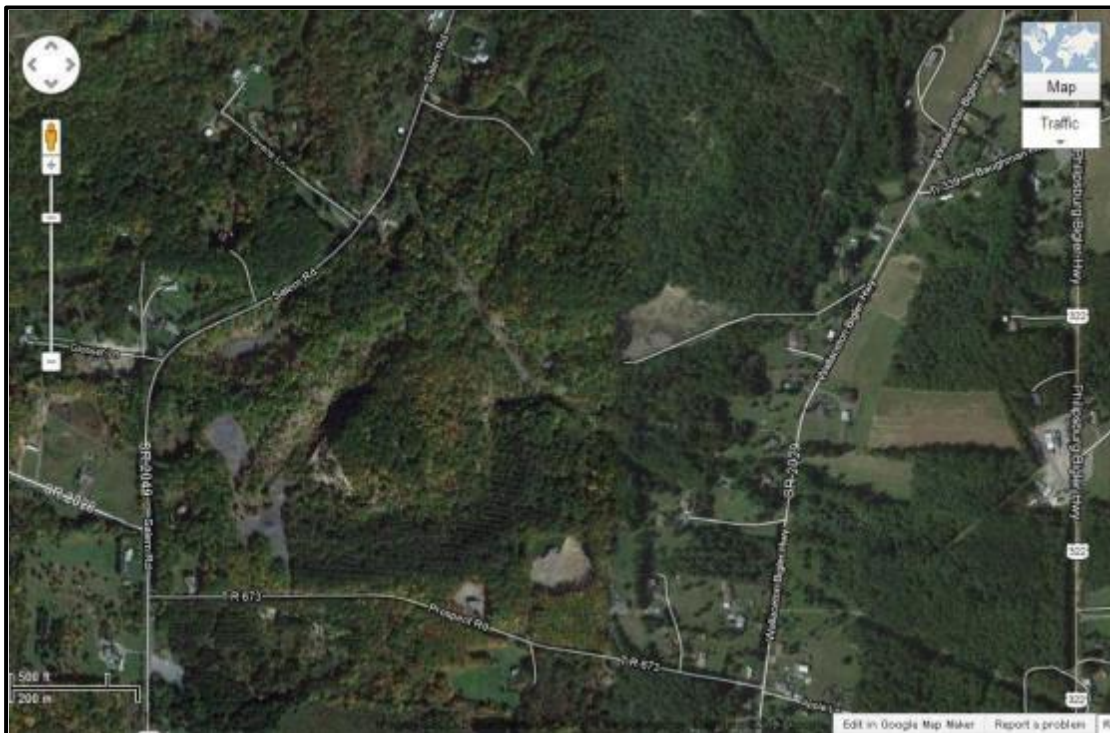
OSM 17(7070,7066)101.1  
Site "A"  
Boggs Township  
Clearfield County

SALEM CHURCH  
CONTRACT NO. OSM 17(7070,7066)101.1

Aerial View



Site "A" Aerial Photo



Site "B" Aerial Photo



SALEM CHURCH  
CONTRACT NO. OSM 17(7070,7066)101.1

Pre-Construction





SALEM CHURCH  
CONTRACT NO. OSM 17(7070,7066)101.1

Pre-Construction



During Construction





SALEM CHURCH  
CONTRACT NO. OSM 17(70770,7066)101.1

During Construction





SALEM CHURCH  
CONTRACT NO. OSM 17(7070,7066)101.1

Post-Construction

