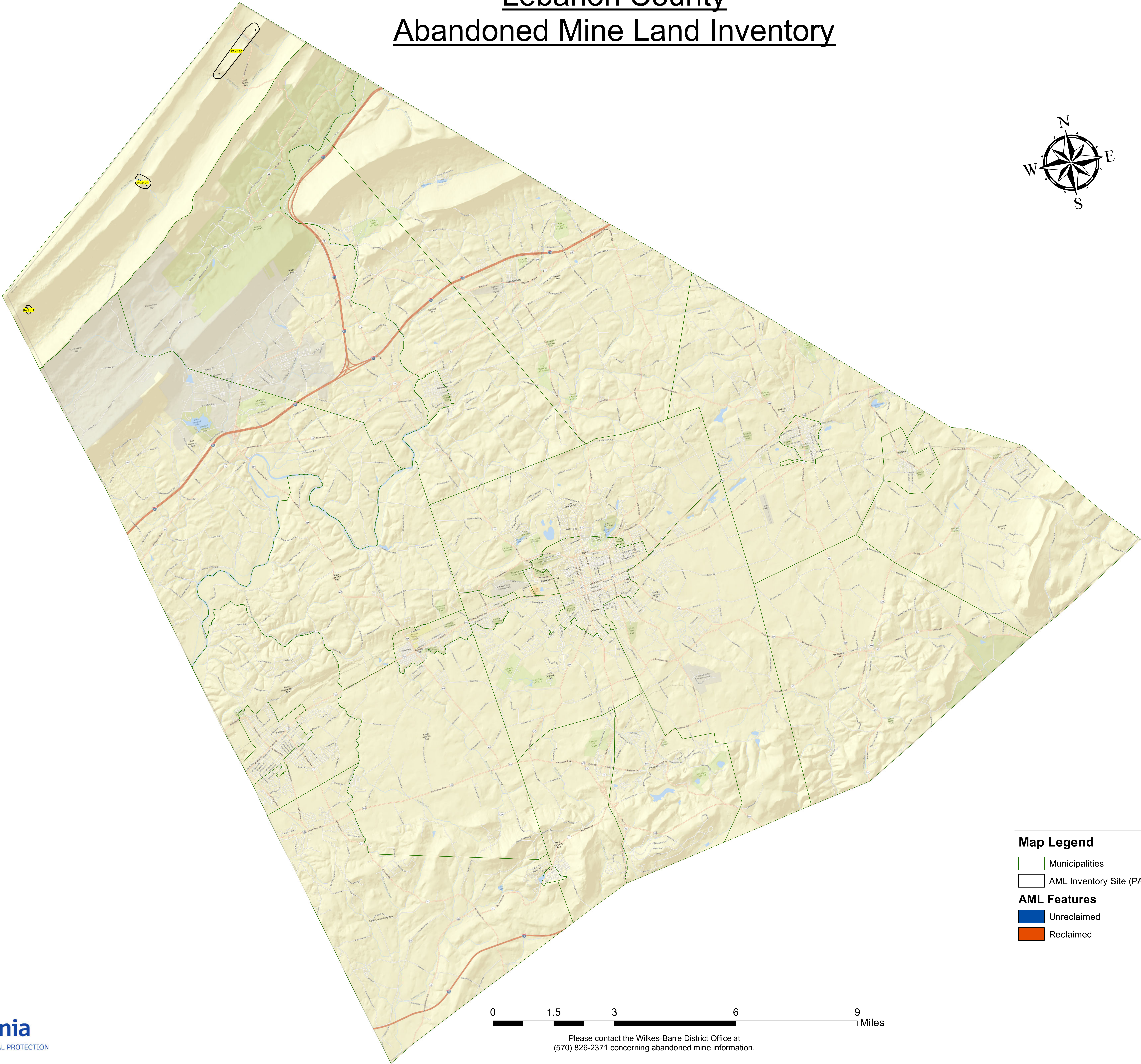
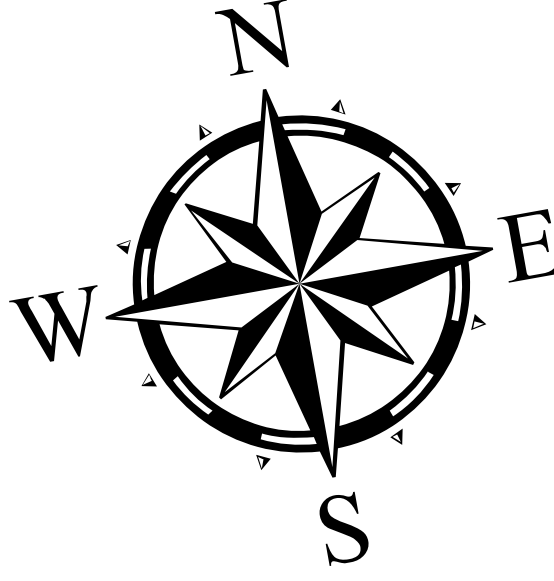


# Lebanon County Abandoned Mine Land Inventory



**Map Legend**

- Municipalities
- AML Inventory Site (PA)

**AML Features**

- Unreclaimed
- Reclaimed



Please contact the Wilkes-Barre District Office at (570) 826-2371 concerning abandoned mine information.



Map Prepared By: Katelyn I. Smith  
Date: 12/27/2013  
Data Source: Bureau of Abandoned Mine Reclamation  
Projection: North\_America\_Albers\_Equal\_Area\_Conic

For information only  
Priority 1 (P1): An AML problem concerning the protection of public health, safety, and property from extreme danger of adverse effects of mining practices or adjacent land and water reclamation.  
Priority 2 (P2): An AML problem concerning the protection of public health and safety from adverse effects of mining practices or adjacent land and water reclamation.  
Priority 3 (P3): An AML problem concerning the restoration of land and water resources and the environment previously degraded by adverse effects of mining practices.