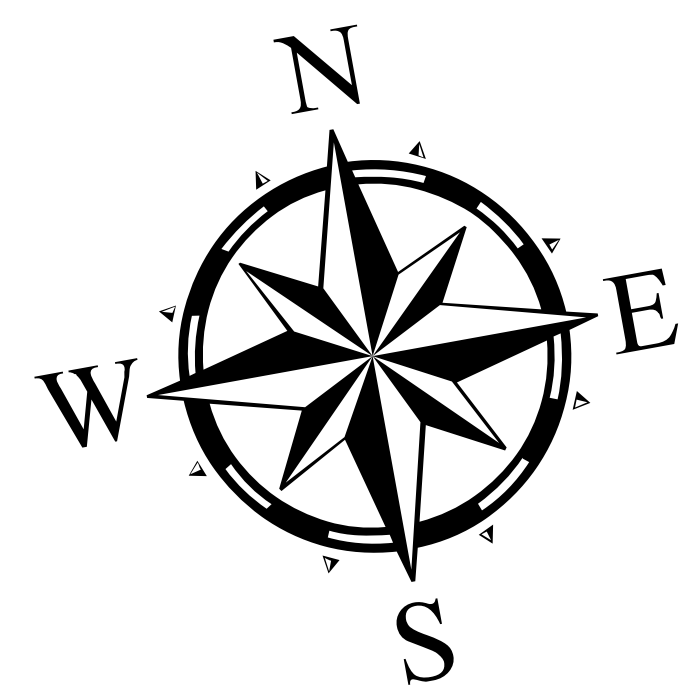
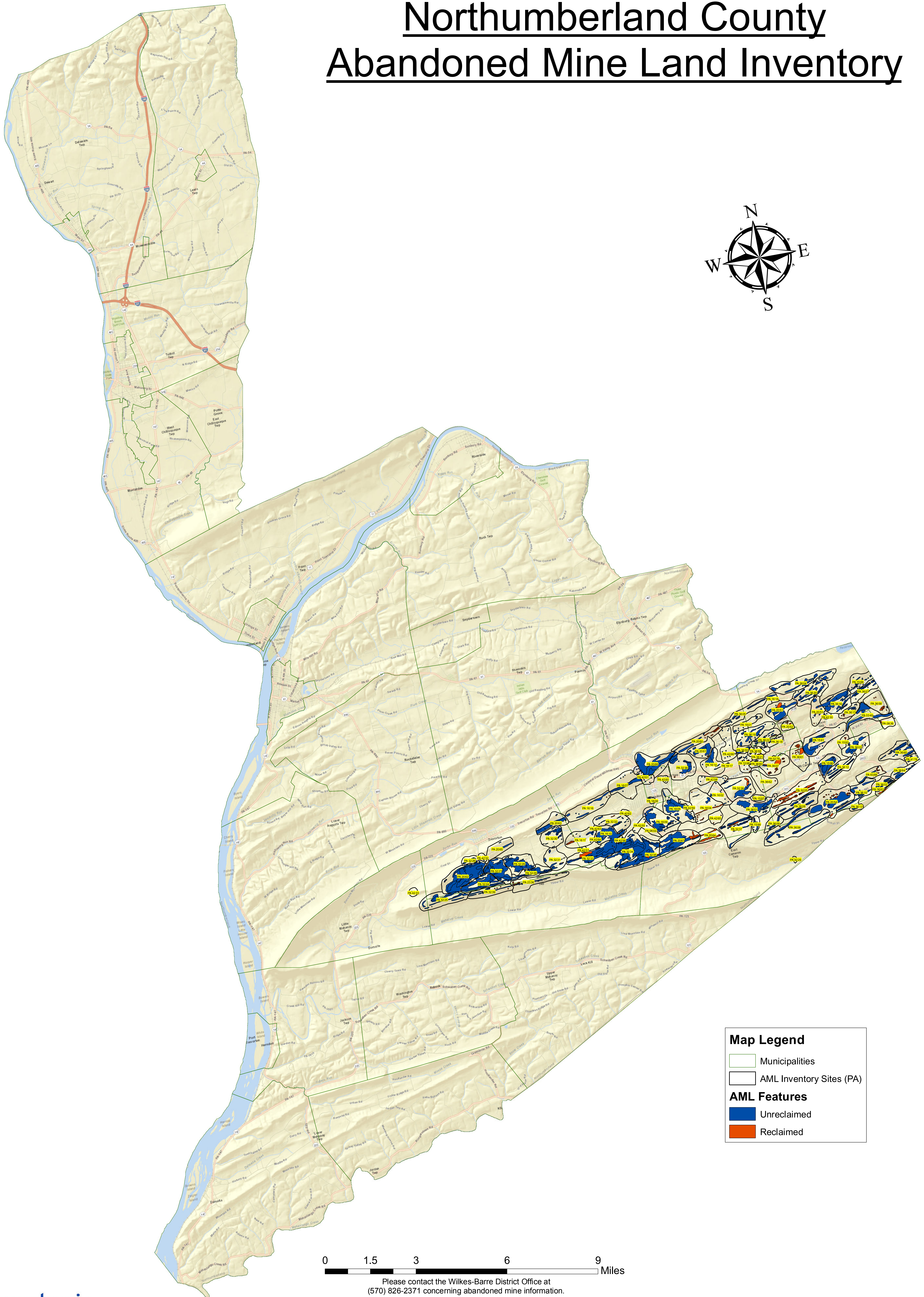


Northumberland County Abandoned Mine Land Inventory



Map Legend

- Municipalities
- AML Inventory Sites (PA)

AML Features

- Unreclaimed
- Reclaimed

0 1.5 3 6 9 Miles

Please contact the Wilkes-Barre District Office at (570) 826-2371 concerning abandoned mine information.



Map Prepared By: Katelyn I. Smith
Date: 12/30/2013
Data Source: Bureau of Abandoned Mine Reclamation
Projection: North_America_Albers_Equal_Area_Conic

For information only
Priority 1 (P1): An AML problem concerning the protection of public health, safety, and property from extreme danger of adverse effects of mining practices or adjacent land and water reclamation.
Priority 2 (P2): An AML problem concerning the protection of public health and safety from adverse effects of mining practices or adjacent land and water reclamation.
Priority 3 (P3): An AML problem concerning the restoration of land and water resources and the environment previously degraded by adverse effects of mining practices.