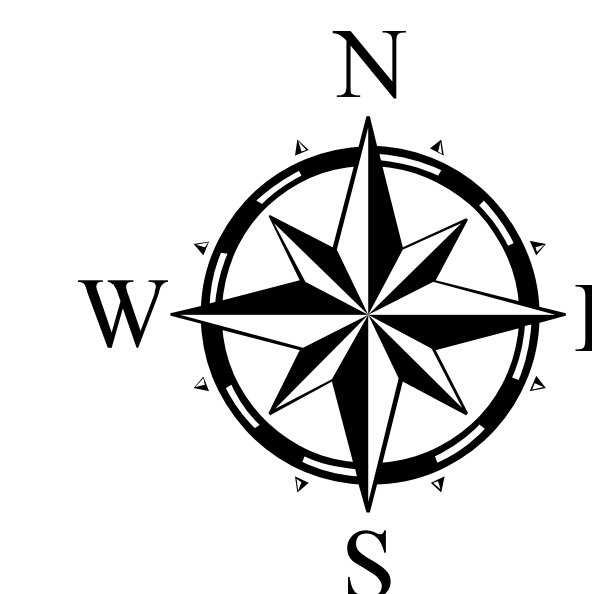
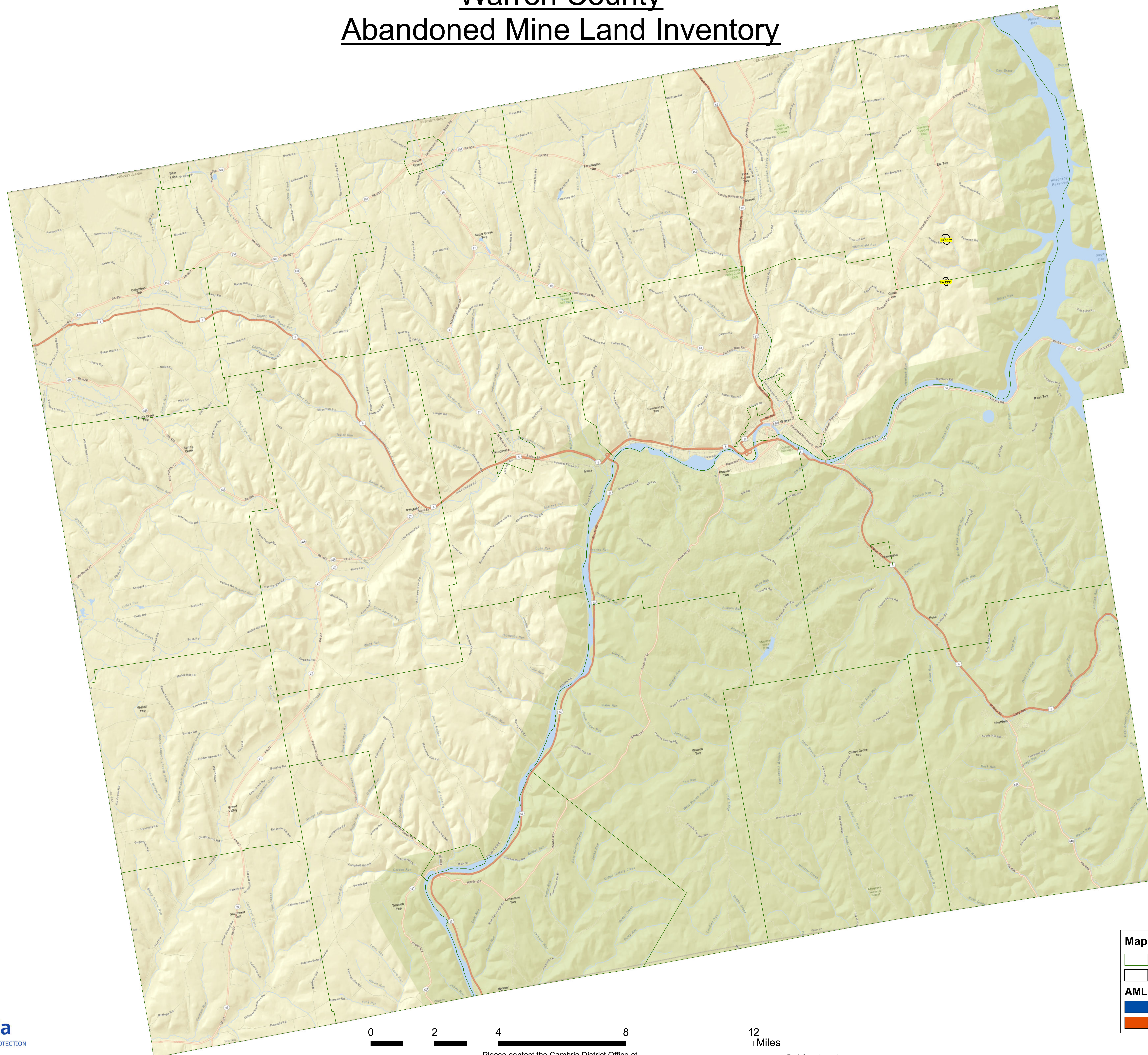


# Warren County Abandoned Mine Land Inventory



**Map Legend**

- Municipalities
- AML Inventory Site (PA)

**AML Features**

- Unreclaimed
- Reclaimed



Please contact the Cambria District Office at  
(814) 472-1800 concerning abandoned mine information.

For Information only  
Priority 1 (P1): An AML problem concerning the protection of public health, safety, and property from extreme danger of adverse effects of mining practices or adjacent land and water reclamation.  
Priority 2 (P2): An AML problem concerning the protection of public health and safety from adverse effects of mining practices or adjacent land and water reclamation.  
Priority 3 (P3): An AML problem concerning the restoration of land and water resources and the environment previously degraded by adverse effects of mining practices.