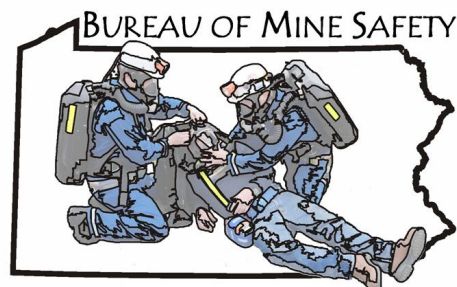




Emergency Response Plan

for

Bituminous Anthracite Industrial Minerals Divisions



Revised March 2020

Table of Contents

| | |
|--|-------------------------------------|
| Introduction | 3 |
| Mission Statement | 3 |
| Planned Objectives | 4 |
| Special Support Telephone Numbers | 5 |
| Department of Environmental Protection – Emergency Response..... | 5 |
| Emergency Medical Service Institute..... | 5 |
| PEMA..... | 5 |
| Special Medical Response Team (S.M.R.T) | 5 |
| Bituminous Emergency Numbers | 6 |
| Bituminous Supervisors | 7 |
| Bituminous Mine Rescue Stations | 8 |
| Bituminous Underground Mine Inspectors | 9 |
| Bituminous Underground Electrical Mine Inspectors..... | 10 |
| Approvals Inspectors..... | 10 |
| Mining Engineers | 10 |
| Electrical Engineer..... | Error! Bookmark not defined. |
| Bituminous Mines | 11 |
| Anthracite Emergencies..... | 11 |
| Anthracite Mine Rescue Stations..... | 13 |
| Anthracite Underground Mine Inspectors..... | 14 |
| Anthracite Underground Mine Electrical Inspectors | 14 |
| Anthracite Underground Mines | 15 |
| Industrial Minerals Emergencies..... | 16 |
| Industrial Minerals Underground Mine Inspectors | 17 |
| Industrial Mineral Mine Rescue Stations | 17 |
| Industrial Mineral Mines..... | 18 |
| Tourist Cave/Mines..... | 18 |
| Mine Emergency Protocol..... | 24 |
| The Command Center | 24 |
| Components of the Command Center | 24 |
| Command Center Coordinators..... | 26 |
| Underground Communications Officer..... | 26 |
| Documentation - Event Log..... | 26 |

| | |
|---|----|
| Mapping Unit | 26 |
| Necessary items at the Command Center | 27 |
| Surface Branch Duties | 27 |
| Safety Officer | 27 |
| Family Liaison Officer | 28 |
| Public Information Officer..... | 28 |
| Underground Branch | 29 |
| The Fresh Air Base..... | 29 |
| Equipment..... | 29 |
| Transportation | 29 |
| Arrival..... | 29 |
| Construction..... | 29 |
| Communications | 29 |
| Ventilation..... | 30 |
| Roof Condition | 30 |
| Rescue operations..... | 30 |
| Emergency Equipment Inventory of Pa Bureau of Mine Safety | 31 |
| Cambria Office Mine Rescue Station | 31 |
| Marion Center Mine Rescue Station..... | 32 |
| New Stanton Office Mine Rescue Station..... | 33 |
| EMERGENCY EVENT LOG..... | 34 |

Introduction

The purpose of the mine emergency response plan is for planning and training for the effective conduct and control of a rescue and recovery operation.

This plan is intended to raise the level of readiness and reliability of response in an emergency.

Jobs and responsibilities are detailed in this plan, with prior training, our personnel will be able to use this plan and know what will be expected of them when an assignment is given at the scene of an emergency.

In the event of a person's absence, the next person in the chain of command shall be contacted.

Mission Statement

The Pennsylvania Bureau of Mine Safety will provide for the rapid deployment of mine rescue equipment and personnel in the event of mine related emergencies throughout the Commonwealth.

In this effort, the Bureau will establish procedures for safe and systematic rescue and recovery operations; public safety; and the safety of Bureau personnel.

To accomplish this goal, the Bureau will establish and maintain the highest standards through a planned program of training, continuing education of Bureau personnel, and the proper care and maintenance of mine rescue and related equipment and material

Planned Objectives

- Provide a system of emergency response for mining operations throughout the Commonwealth of Pennsylvania, which will result in the timely response of Mine Safety personnel and equipment to mine related emergencies as they occur in accordance to the Mining Laws of Pennsylvania, the NIMS (National Incident Management System), and the Federal 2006 Miner Act.
- Incorporate the services of DEP's Emergency Response personnel to provide and maintain telephone communication for all underground mines in the event of emergency, twenty-four hours a day, year-round.
- Provide organizational chain-of-command for Emergency Response, Mine Safety, and mining industry personnel designed to eliminate untimely delays in response of personnel and equipment to mine related emergencies.
- Provide mapped travel directions to the location of every underground mining operation throughout the Commonwealth of Pennsylvania to further eliminate delays in the response of personnel and equipment to mine related emergencies.
- Outline specific duties and responsibilities for personnel in the Bureau of Mine Safety, which will produce efficient results and provide for the safety of all concerned at mine emergencies.
- Provide user training for Bureau and mining industry personnel on the fulfillment of the procedures, and the use of information contained in this manual to ensure that desired performance standards are achieved and maintained.
- Periodically revise and update the information contained herein, as necessary, to produce the highest standards in providing response to mine emergencies.
- Responsibilities and procedures for search and rescue within the Commonwealth
 - Search and Rescue
 - Emergency Support Function # 9

Special Support Telephone Numbers

Department of Environmental Protection – Emergency Response

Director

Brian Moore

Office: (717) 787-5715

Cell: (717) 571-9832

24 Hr.: (717) 787-4343

- The director or his/her subordinate shall be called to propagate the notification of DEP officials to handle any environmental related mine emergencies.
- Monitors Department response as appropriate through the Bureau Director for Mine Safety.

Emergency Medical Service Institute

Executive Director

Thomas J. McElree, NREMT-P

Direct: 412-494-5571

Office: 412-242-7322

Fax: 412-787-2340

Deputy Director

Brian S. Shaw, BSAS, NREMT-P

Direct: 412-494-5579

- Command Center vehicle for Western Pennsylvania

PEMA

Director for Operations

Richard D. Flinn, JR.

PEMA Eastern (Hamburg)

(610) 562-3003 or (800) 372-7362

PEMA Central (Harrisburg)

(717) 651-7060 or (800)-272-7362

PEMA Western (Indiana)

(724) 357-2990 or (800) 972-7362

- PEMA shall be called to request an “Incident Management Team”
- The ICM will aid the Bureau in implementing the NIMS protocol
- Any authorization of emergency funding can be streamlined to meet the needs of the mine emergency

Special Medical Response Team (S.M.R.T)

Melissa Anderson

Cell: (724) 840-0101

- The SMRT team will respond if there is a need for advance emergency care in the underground environment

Bituminous Emergency Numbers

D.E.P. 24 Hour Emergency Telephone Number

1-800-541-2050

Bureau Director

Rich Wagner

Office: (724) 404-3154
Home: (724) 366-6652
Cell: (724) 691-5143

Chief - Division of Bituminous Mine Safety

Jim Schuessler

Office: (724) 404-3141
Home: (000) 000-0000
Cell: (000) 000-0000

Chief - Bituminous Electrical Safety Division

Charles Washlack

Office: (724) 404-3140
Home: (724) 404-3140
Cell: (724) 404-3140

Emergency Response & Training Manager

Dustin Mowery

Office: (724) 404-3146
Home: (724) 541-2563
Cell: (814) 330-6244

Bituminous Supervisors

Bituminous Underground Mine Inspector Field Supervisor

Richard Murphy - Marion Center Office

Office: (724) 490-2265

Home: (724) 726-9516

Cell: (724) 570-5731

Bituminous Underground Mine Inspector Field Supervisor

Mike Hess - New Stanton Office

Office: (724) 404-7284

Home: (724) 583-7908

Cell: (724) 570-5732

Bituminous Underground Mine Inspector Field Supervisor

Mark Gindlesperger - Ebensburg Office

Office: (814) 472-1927

Home: (814) 736-9547

Cell: (814) 790-3402

Bituminous Underground Electrical Mine Inspector Field Supervisor

Gary Barkley- New Stanton Office

Office: (724) 404-3147

Home: (724) 397-2234

Cell: (724) 570-5737

Mining Engineer Supervisor

Scott Hamilton

Office: (724) 430-3150

Home: (724) 668-2757

Electrical Engineer Supervisor

Art Brower

Office: (724) 425-3021

Home: (724) 437-8837

Cell: (724) 322-7466

Bituminous Mine Rescue Stations

New Stanton Mine Rescue Station

Emergency Response & Training Specialist

William Dean

Office: (724) 404-3152
Home: (724) 677-2637
Cell: (724)-366-8173

Ebensburg Mine Rescue Station

Emergency Response & Training Specialist

Matt Owens

Office: (814) 472-1155
Home: (000) 000-0000
Cell: (000) 000-0000

Marion Center Mine Rescue Station

Emergency Response & Training Specialist

John Brottish III

Office: (724) 490-2261
Home: (724) 984-3502
Cell: (724) 970-4120

Bituminous Underground Mine Inspectors

| | | |
|------------------|-------|----------------|
| Harry Casteel | Home: | (724) 725-9187 |
| | Cell: | (814) 570-5727 |
| Derek Corcoran | Home: | (724) 322-6592 |
| | Cell: | (724) 970-8178 |
| Tony Galie | Home: | (724) 439-1443 |
| | Cell: | (724) 570-5729 |
| Adrian Gordon | Home: | (724) 239-5742 |
| | Cell: | (724) 505-5734 |
| Brent Harmon | Home: | (814) 275-2110 |
| | Cell: | (814) 327-2646 |
| William Kokla | Home: | (814) 948-4036 |
| | Cell: | (814) 505-8165 |
| Albert Litzinger | Home: | (814) 244-7281 |
| | Cell: | (724) 317-9235 |
| Leroy Putt | Home: | (724) 357-9824 |
| | Cell: | (724) 562-3948 |
| Brad Russian | Home: | (814) 701-1835 |
| | Cell: | (814) 505-8301 |
| Edward Yount | Home: | (814) 256-3549 |
| | Cell: | (724) 434-3097 |

Bituminous Underground Electrical Mine Inspectors

| | | |
|----------------|-------|----------------|
| Dan Lambert | Home: | (814) 233-4490 |
| | Cell: | (717) 727-3170 |
| Nick Dady | Home: | (724) 255-4630 |
| | Cell: | (412) 691-5247 |
| Jeff Hamilton | Home: | (724) 249-7161 |
| | Cell: | (814) 505-7852 |
| Matt Papinchak | Home: | (814) 467-4120 |
| | Cell: | (717) 727-3034 |
| Bruce Ramsey | Home: | (724) 729-3916 |
| | Cell: | (724) 570-5842 |

Approvals Inspectors

| | | |
|------------|---------|----------------|
| James Ross | Office: | (724) 936-6656 |
| | Home: | (724) 785-7033 |

Mining Engineers

| | | |
|----------------|---------|----------------|
| Mike Castner | Office: | (724) 404-3157 |
| | Home: | (724) 859-2199 |
| Joshua Chlopek | Office: | (724) 404-3144 |
| | Home: | (724) 919-3030 |

Bituminous Mines

| <i>Supervisor</i> | <i>Mine Inspector</i> | <i>Mine</i> | <i>Electrical Inspector</i> | <i>Supervisor</i> |
|-------------------------------|---------------------------|--|---|-------------------------|
| Hess 724-570-5730 | Gordon 724-570-5734 | Cumberland (P) | Scott 814-243-4705 | Barkley 724-570-5737 |
| Hess 724-570-5730 | Corcoran 724-970-8178 | Harvey | Ramsey 724-570-5842 Scott 814-243-4705 | Barkley 724-570-5737 |
| Hess 724-570-5730 | Galie 724-570-5729 | Bailey | Ramsey 724-570-5842 | Barkley 724-570-5737 |
| Hess 724-570-5730 | Casteel 724-570-5727 | Enlow Fork | Dady 724-691-5247 | Barkley 724-570-5737 |
| Hess 724-570-5730 | Corcoran 724-970-8178 | Bailey Prep Plant | Dady 724-691-5247 | Barkley 724-570-5737 |
| Murphy 412-289-1696 | VACANT | | | |
| Murphy 412-289-1696 | Putt 724-562-3948 | Coral-Graceton Barrett Lowry Darmac No. 2 (P) Knob Creek | Papinchak 717-727-3034 VACANT (Papinchak) | Barkley 724-570-5737 |
| Murphy 412-289-1696 | E. Yount 724-434-3097 | Logansport (P)(S) Long Run (I) Heilwood Brush Valley Dutch Run Parkwood | Lambert 717-727-3170 Papinchak 717-727-3034 VACANT (Papinchak) | Barkley 724-570-5737 |
| Murphy 412-289-1696 | Harmon 814-327-2646 | Crooked Creek (P) Harmony Kocjancic Penfield (I) | VACANT (Lambert) | Barkley 724-570-5737 |
| Gindlesperger 814-515-4760 | Russian 814-505-8301 | Horning North Fork Rustic Ridge #1 Mine 78 Prep Plant | Lambert 717-727-3170 Papinchak 717-727-3034 | Barkley 724-570-5737 |
| Gindlesperger 814-515-4760 | Kokla 814-505-8165 | Cresson Kingston West Maple Springs Madison | Lambert 717-727-3170 Papinchak 717-727-3034 | Barkley 724-570-5737 |
| Gindlesperger 814-515-4760 | Litzinger 724-317-9235 | Acosta Cass #1 Mine 78 | Lambert 717-727-3170 Papinchak 717-727-3034 | Barkley 724-570-5737 |

Anthracite Emergencies
D.E.P. 24 Hour Emergency Telephone Number

1-800-541-2050

Bureau Director

Rich Wagner

Office: (724) 404-3141
Home: (724) 366-6652
Cell: (724) 691-5143

Chief - Division of Anthracite & Industrial Minerals Safety

Troy Wolfgang

Office: (570) 621-3139
Home: (570) 695-3259
Cell: (570)337-4569

Mining Engineer Manager

David Williams

Office: (570) 621-3141
Home: (570) 682-8576
Cell: (570) 337-4563

Emergency Response & Training Manager

Dustin Mowery

Office: (724) 404-3146
Home: (724) 541-2563
Cell: (814) 330-6244

Emergency Response Training Specialist

Scott Wolfgang

Office: (570) 695-3610
Home: (570) 695-2225
Cell: (570) 337-4570

(AUGR)

(570) 695-3107

Tremont Emergency

Office & Clerical Personnel

Anthony Gromalski
Clerk Typist 2

Office: (570) 621-3139

Anthracite Mine Rescue Stations

Tremont Mine Rescue Station

Emergency Response & Training Specialist

Scott Wolfgang

Office: (570) 695-3610

Home: (570) 695-2225

Cell: (570) 337-4570

Anthracite Underground Mines

| <i>Supervisor</i> | <i>Mine Inspector</i> | <i>Mine</i> | <i>Electrical Inspector</i> |
|-------------------------------|--------------------------------|--|---------------------------------|
| Troy Wolfgang | Steven Geist 570-337-4565 | Wheels Slope | Kenneth Dengler 570-337-4562 |
| | | | |
| Troy Wolfgang 570-337-4569 | Jeffrey Harman 570-337-4564 | No. 1 Slope | Kenneth Dengler 570-337-4562 |
| | | S&J Coal Mine No.1 | Larry Graver 570-337-4561 |
| | | Woods Drift | |
| | | N&L Slope | Kenneth Dengler 570-337-4562 |
| | | Rattling Run Slope No. 1 Rock Slope | |
| | | | |
| Dave Williams 570-337-4563 | Terry Wolfgang 570-337-4571 | Seven Foot Slope | Kenneth Dengler 570-337-4562 |
| | | Slope No.2 | Larry Graver 570-337-4561 |
| | | Williamstown #1 Mine | |
| | | | |
| Troy Wolfgang 570-337-4569 | Arthur Snyder 570-337-4568 | No. 13 Slope | Larry Graver 570-337-4561 |
| | | Buck Mountain Slope Mine | |
| | | Bottom Rock Slope | |

Industrial Minerals Emergencies
D.E.P. 24 Hour Emergency Telephone Number

1-800-541-2050

Bureau Director

Rich Wagner

Office: (724) 404-3141
Home: (724) 366-6652
Cell: (724) 691-5143

Chief - Division of Anthracite & Industrial Minerals Safety

Scott Schilling

Office: (724) 404-3140
Home: (814) 533-4658
Cell: (570) 899-8041

Mining Engineer Supervisor

Scott Hamilton

Office: (724) 404-3150
Home: (724) 668-2757

Emergency Response & Training Manager

Dustin Mowery

Office: (724) 404-3146
Home: (724) 541-2563
Cell: (814) 330-6244

Emergency Response & Training Specialist

William Dean

Office: (724) 404-3152
Home: (724) 677-2637
Cell: (724)-366-8173

Emergency Response Training Specialist

Scott Wolfgang

Office: (570) 695-3610
Home: (570) 695-2225
Cell: (570) 337-4570

(AUGR)

Tremont Emergency

(570) 695-3107

Industrial Minerals Underground Mine Inspectors

| | | |
|----------------|-------|----------------|
| Thomas Goodwin | Home: | (724) 455-7736 |
| | Cell: | (724) 237-1612 |
| Chris Yackmack | Home: | (724) 525-8070 |
| | Cell: | (724) 691-5022 |
| Shane Walsh | Home: | (724) 233-1300 |
| | Cell: | (724) 498-9039 |

Industrial Mineral Mine Rescue Stations

New Stanton Mine Rescue Station

Emergency Response & Training Specialist

| | | |
|--------------|---------|----------------|
| William Dean | Office: | (724) 404-3152 |
| | Home: | (724) 677-2637 |
| | Cell: | (724)-366-8173 |

Ebensburg Mine Rescue Station

Emergency Response & Training Specialist

| | | |
|------------|---------|----------------|
| Matt Owens | Office: | (814) 472-1155 |
| | Home: | (000) 000-0000 |
| | Cell: | (724) 000-0000 |

Marion Center Mine Rescue Station

Emergency Response & Training Specialist

| | | |
|-------------------|---------|----------------|
| John Brottish III | Office: | (724) 490-2261 |
| | Home: | (724) 984-3502 |
| | Cell: | (724) 970-4120 |

Tremont Mine Rescue Station

Emergency Response & Training Specialist

| | | |
|----------------|---------|----------------|
| Scott Wolfgang | Office: | (570) 695-3610 |
| | Home: | (570) 695-2225 |
| | Cell: | (570) 337-4570 |

Industrial Mineral Mines

| <i>Supervisor</i> | <i>Mine Inspector</i> | <i>Mine</i> | |
|-----------------------------------|--------------------------------|---------------------------------|--|
| Scott Schilling (814) 360-2197 | Chris Yackmack 724-691-5022 | Bakersville III Quarry | |
| | | Bison Mine | |
| | | M & M Lime Co., Inc. | |
| | | Torrance Mine | |
| | | | |
| | Thomas Goodwin 724-237-1612 | Bullskin No.1 Mine | |
| | | Coolspring Mine #1 | |
| | | Coolspring Quarry (Mine #1 & 2) | |
| | | Eichorn Mines | |
| | | Lake Lynn Quarry | |
| | | Rich Hill 2 Mine | |
| | | Springfield Pike Quarry | |
| | | | |
| | Shane Walsh 724-498-9039 | Millard Quarry | |
| | | Pleasant Gap | |
| | | Thomasville Quarry | |
| Romesburg Quarry | | | |

Tourist Cave/Mines

| <i>Supervisor</i> | <i>Mine Inspector</i> | <i>Cave</i> | |
|-----------------------------------|--------------------------------|---------------------|--|
| Scott Schilling (814) 360-2197 | Thomas Goodwin 724-237-1612 | Coral Caverns | |
| | | Indian Caverns | |
| | | Laurel Caverns | |
| | | Lincoln Caverns | |
| | | | |
| | | Crystal Cave | |
| | | Indian Echo Caverns | |
| | | Penn's Cave | |
| | | Woodward Cave | |
| | | | |

Delegation of Duties

Bureau Director

1. Upon notification by the mine operator, activate the Emergency Response Plan.
2. Delegates responsibilities for rescue and recovery operations.
3. Spokesperson for the Bureau of Mine Safety.
4. Issues information on scheduled basis.
5. Liaison for Deputy Secretary, Secretary & Governor
6. State liaison between Company official, Labor representative and MSHA manager in charge.
7. Will represent the State at the command center.

Chief - Division of Bituminous Mine Safety

Chief - Division of Anthracite & Industrial Minerals Safety

Chief - Bituminous Electrical Safety Division

1. Upon notification by the mine operator, activate the Emergency Response Plan.
2. Establish an advisory committee composed of State, Federal, and Company Representative
3. Responsible for all necessary communications coming into and out of the command center.
4. Liaison between Bureau Director and field staff.
5. Gather facts from mine personnel, report details / facts to Bureau Director.
6. Designate officials to serve as the Fresh Air Base Coordinator for each shift.
7. Will represent the State at the command center.

Media Communications

This is to establish communications and a schedule for regular updates with the media in the event of a mine emergency. The Bureau Director, will authorize and issue all information that is released to the public or media concerning the involved miners. The media may approach those involved at the emergency site.

Family Liaison Officer

The mine families' first liaison shall at a minimum:

1. Coordinate with the mine operator's designated family representative and designated federal family liaison.
2. Provide miners' families with briefings on the progress of mine emergency response operations in a timely and effective manner.
3. Receive and act on comments, concerns and needs of the miners' families during and immediately after the response to the mine emergency.

4. Coordinate with the appropriate social service and disaster aid agencies and organizations to provide assistance needed by mine families.
5. Ensure information regarding the mine emergency response is communicated to miners' families first before information is released to the public or media.
6. Ensure the wishes of the miners' families are honored with respect to the granting of interviews and access by the news media.
7. Prepare an after-action report (AAR) within 30 days after a mine emergency to be submitted to the Mine Families First Response and Communications Advisory Council through DEP.

Emergency Response & Training Section Manager

1. Contacts ER/TS's or appropriate personnel to respond with rescue vehicles and equipment.
2. Contacts office staff begin callout of Mine Rescue Teams/Liaisons to report to emergency location.
3. Consults with Division Chiefs of Mine Safety regarding plans for the rescue/recovery operations.
4. Establish a procedure for ordering supplies.
5. If necessary, travels to affected emergency site to assist in direction of the emergency response operation.
6. Establishes a rotation schedule for the ER/TS's.
7. Establishes a rotation schedule for the Mine Rescue Teams.
8. Acts as liaison between the Bureau and local EMS, PEMA, SMRT and other outside responding to emergency

Bituminous Mine Inspector Supervisor

Anthracite Mine Inspector Supervisor

Underground Electrical Mine Inspector Field Supervisor

1. Upon notification, activate the Emergency Response Plan.
2. Makes sure ventilation fan is operating. Supervise all repairs to the fan to establish ventilation.
3. Arranges schedule of Mine Inspectors.
4. Oversees accurate samples and instrument readings of the mine atmosphere at the fan at regular intervals.
5. Oversees the measurement of air quantity at regular intervals.
6. Make sure readings and measurements are recorded and communicated to command center.

Anthracite Underground Mine Inspector
Anthracite Underground Electrical Mine Inspector
Bituminous Underground Mine Inspector
Bituminous Underground Electrical Mine Inspector
Industrial Minerals Underground Mine Inspector

1. Upon notification, activate the Emergency Response Plan.
2. DEP Incident Commander in charge of response when Command of the Incident is transferred to the DEP.
3. Initiate Event log.
4. Assign personnel to guard all underground openings
5. Assign person to check in and check out all people entering or exiting the mine.
6. Verify MSHA/State Police / Local Police / EMS have been notified.
7. Take samples and instrument readings of the mine atmosphere at the fan at regular intervals.
8. Measures air quantity at regular intervals.
9. Make sure readings and measurements are recorded and communicated to command center.
10. If necessary, confiscate all required State mandated record keeping for future investigation.

Emergency Response & Training Specialists

1. Upon notification, travel to the mine rescue station and prepare the mine rescue vehicle for travel to the affected mine.
 - Travel to the mine will be done in accordance to the EVOC procedures set forth in prior training sessions
Note: Only EVOC trained personnel may operate mine rescue vehicle in designated emergencies.
2. Upon arrival at mine site, check in with the senior Bureau of Mine Safety official or Company Official in charge to determine the following:
 - Preferred location for the mine rescue vehicle.
 - Available work area to perform the necessary bench duties required, including the cleaning and disinfecting of SCBA parts and assemblies.
 - Available area for the assembly and staging of the mine rescue teams.
 - Prepare equipment as necessary to include:
 - Assembly and testing of SCBA's.
 - Calibration and testing of gas detectors.
 - Distribution of Mine Rescue and Safety Equipment.
 - (Note: all equipment distributed shall be recorded.)
3. Act as Liaison between the command center and the mine rescue teams,
 - I.E. Brief the mine rescue teams on the present status of the work being performed
4. Perform other work as required to insure for the safety of Mine Safety personnel and the mine rescue teams.
5. Designate an area to be used as a commissary and rest area for the Mine Rescue Teams.

Mining Engineer Supervisor Electrical Engineer Supervisor

1. Upon notification, report to the main office for initial consultation or report to alternate site if directed.
2. Notify engineering staff and alert to the situation.
3. Assign and designate roles of subordinates.
4. Coordinate engineering activities with MSHA, Companies and Command center if needed.

Mining Engineers Electrical Engineer/Approvals

1. Report to main office for briefing or to alternate site as directed.
2. Assist in engineering activities with MSHA, Companies and Command center if needed.

Administrative/Clerical Staff/ Information Technician

1. Upon notification by supervising manager, the Clerical Staff/IT will report to the main office to assist in the callout and logging of names of the Bureau's personnel.
2. The Clerical Staff/IT will assist in the callout and logging of names of the regional mine rescue teams to the affect commodity (Bituminous/Anthracite/Industrial Minerals)
3. The Clerical Staff/IT will manage the telephone system during the emergency directing the appropriate emergency services to the desired commodity. (Bituminous/Anthracite/Industrial Minerals)
4. The Clerical Staff/IT will meticulously log all events and information that is received through the office. This information will be used in the later investigation.
5. The Clerical Staff/IT will assist in the ordering and delivery of emergency supplies to the affected emergency site if necessary.
6. If necessary, a rotation shift will be used to ensure constant management of the communication network in the main office.
7. The Information Technician will insure all computer and technical links are maintained, and if necessary travel the emergency site to assist in computer/technical work.

Mine Emergency Protocol

The Command Center

Overview

The command center is the most important surface facility and will be the hub of the mine emergency operation. Those in charge will be stationed at the command center to plan and direct the rescue and recovery operation.

- *Note: NIMS terminology has been implemented into this manual.*
- The command center will house communications equipment connected to the underground phones and to other surface phone lines. It will contain mine maps to follow the progress of the teams, and to mark findings and plan rescue strategy.

Components of the Command Center

- The command center should be comprised of individuals with the most experience and possess the authority to handle mine rescues or emergencies.
- These individuals should have prior mine rescue team experience, have participated in real mine emergencies or have received the proper training before assisting at the command center.
- This reasoning is so that the command center (Unified Command Center) fully understands the procedures that the fresh air base and the mine rescue team must comply with to ensure their safety.
- This should entail individuals from the company involved, Pennsylvania Bureau of Mine Safety, MSHA officials and a representative from the labor organization if applicable.
- The mine operator is ultimately responsible for developing a plan of action with the assistance and guidance from the federal and state authorities.

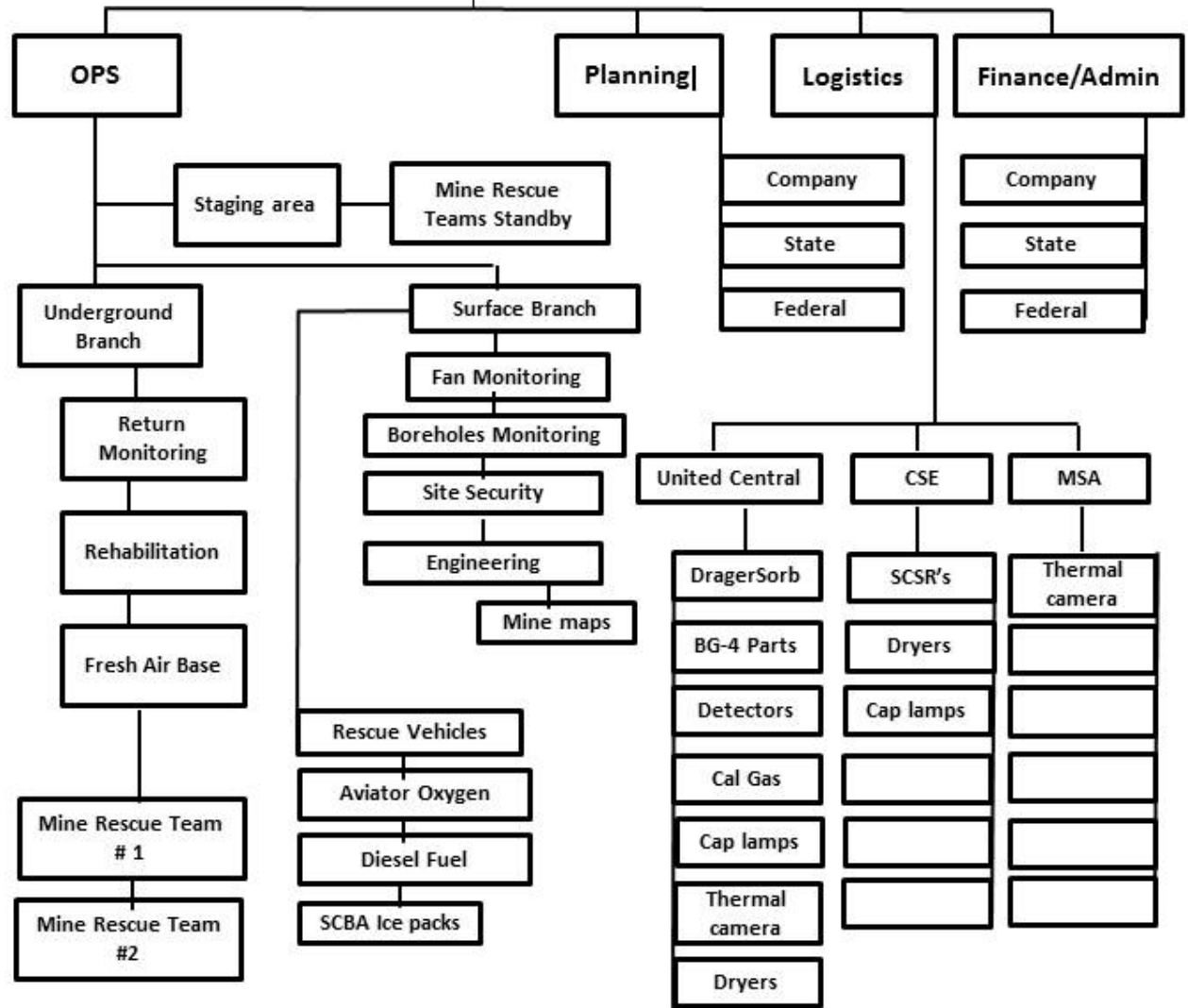
Company
State
Federal
Labor

Command Center

Public Information Officer

Family Liaison

Safety Officer



Command Center

Command Center Coordinators

The coordinators should be the most senior and experienced of the personnel representing Pa Mine Safety, MSHA, Company representative, and Labor at the command center. These persons are responsible for overseeing and steering the command decisions of the incident involved.

The coordinator(s) shall take all information available input from the command team, and unilaterally involve the team in a command decision.

The coordinator(s) shall have the overall responsibility of a command decision, and determine a course of action.

Underground Communications Officer

The communications person shall possess the ability to communicate the English language to others so as persons underground will follow orders as directed by the command center.

It is imperative that this individual can speak clearly and can hear adequately to receive information from the fresh air base, and relay the information to the rest of the command center team.

This person should have previous experience as a communication officer on the mine rescue team and/or fresh air base communication officer.

Documentation - Event Log

This individual shall possess the ability to translate the message from the communications person and develop a chronological log of all the events that occur and that are reported.

Since the event log may be used for future investigation and litigation, the log must be made so that all person involved can understand the chain of events.

A standard log sheet shall be used to eliminate confusion. The log event shall include:

- Name of Incident
- Date of incident
- Time at which message is received
- The message from the fresh air base
- The gas readings from the fresh air base
- All mine rescue team checks and the low oxygen reading for the mine rescue team
- All fan readings
- Any other information that in important to the emergency

Mapping Unit

This individual should have previous experience as a mapman on the mine rescue team, briefing officer, fresh air base coordinator or mining engineer.

The outside map used shall coincide with mine rescue team and fresh air base to prevent confusion.

Prior to going underground, all maps used shall be marked with the crosscuts and entries that are used at that particular mine, or decided upon at the briefing session.

The mapping person shall use the standard map symbols used by the mine rescue teams. This shall be confirmed by the engineering staff.

Colored pencils should be used to differentiate certain aspects of the mine; such as green pencil for intake air, red pencil for return air and danger areas of the mine, and blue pencil for mine rescue team progression.

The command center map must be accurate in order for the command team to make proper decisions.

Necessary items at the Command Center

For a mine emergency operation to succeed, the following items shall be provided for:

- Adequate work area
- Mine pager/phone
- Multiple telephones lines for incoming/outgoing
- Adequate signal strength for cellular telecommunications or satellite link up
- Dry erase or chalk board
- Sufficient maps of the affected mine
- Maps of nearby mines; active, inactive or sealed
- Colored pencils, colored markers, etc.
- Mine emergency manual for affected mine
- List of all personnel at existing mine emergency

Surface Branch Duties

Safety Officer

The safety officer is responsible for overseeing the outside staging areas to ensure total safety for individuals entering and exiting the mine emergency site.

- As emergency response personnel from the State, Federal, Company and mine rescue team members arrive on scene, they shall report to the area designated by the company's emergency response plan.
- If the Pa State mine rescue vehicles have not yet arrived with their equipment, the State Trained mine rescue team members shall report to the State Mine Inspector in charge or the senior company official and stand by until the arrival of the vehicles.
 - It should be noted that teams might be comprised of private company and state trained team members as they arrive to enhance a successful rapid response.
 - If the emergency persists, teams will be able conform back to their original designation.
 - This is why it is imperative that all rescue teams use the same guidelines developed by the current National Mine Rescue Rules.
- The outside staging for the mine rescue teams should be in a location away from the general work area of the mine area.

- This prevents confusion and allows the rescue teams to concentrate on preparing their equipment for transportation underground.
- The staging area should be under roof in a well heated/ventilated area.
- The staging area should be large enough to accommodate the number of teams that will be involved in the mine emergency.
- If the mine emergency has not ended within 6 hours, arrangements should be made for the mine rescue teams to be housed in a separate area for their rest period.
- This ensures the mine rescue team the proper rest required once a work rotation has been established.
- Mine management shall make all arrangements to see that the teams receive all the necessities required for a lengthy stay; i.e.
 - Food
 - Fluids
 - Extra clothing, if necessary
 - Personal grooming items

Once it has been established that the event will exceed 6 hours in length, mine management will be responsible for acquiring all mine rescue supplies depleted in the initial rescue operation.

Family Liaison Officer

This person shall serve as the primary communicator to the miners' families to ensure that the information that is pertinent to the rescue operation received at the command center is accurate and given in confidence only to family at a secured area away from the emergency site.

Public Information Officer

The public information officer should represent all parties involved in the emergency.

This person(s) shall serve as the primary communicator to the news media and public that the information is accurate and up to date. The family will be notified first of all information prior to the media.

Underground Branch

The Fresh Air Base

Equipment

- All equipment shall be accounted for. Equipment shall have accurate pre-operation checks preformed.

Transportation

- Each mine rescue team is responsible for their equipment in transit. Any forgotten equipment or malfunction of equipment will disrupt the rescue and the team will be removed from the rotation.

Arrival

- The rescue team will stage as close as possible to Fresh Air Base designated by command personnel.
- The team members are responsible for their equipment.
- The team members are under the direction of the Team Captain.

Construction

- After having been briefed by the command center, the teams will proceed to the pre-chosen site of the fresh air base.
- It must be located as close to the scene of the emergency as possible, in a safe location, without having any chance of being affected by the cause of the emergency.
- It must have assured outside communications, it should have space enough to house the briefing officer, the Pa State, MSHA, company, and labor representative.

Communications

- A mine pager/telephone shall be at the FAB to communicate to the Command Center.
- Noise, congestion, and confusion shall be kept to a minimum. The team should maintain contact with FAB throughout their operation and a back-up team should be on standby.
- Team captain and map man shall report to the State Inspector in charge at the Fresh Air Base for brief / rotation of team.
- Life/Line - Emergency signals to be established with the Co-captain:
 - 1 pull - Stop
 - 2 pulls - Advance
 - 3 pulls - Retreat
 - 4 pulls - Distress

Ventilation

- The FAB shall be ventilated with positive ventilation.
- Air locks shall be installed to permit the passage of men and materials without an interruption of ventilation or contamination of the atmosphere.
- The quality of air shall be monitored.

Minimum Air Standard at the FAB shall be:

- Not less than 19.5% Oxygen
- Less than 50 ppm Carbon Monoxide
- Less than .5% Methane
- No smoke

Roof Condition

- The roof condition of the FAB will be closely monitored due to heat stresses that can compromise the roof seams
- If necessary, no team shall go inby the FAB until the proper supports to the roof have been installed
- It is imperative that at least 2 entries remain intact for the teams to explore inby to ensure a safe escape route in the event of an emergency.

Rescue operations

- This is the nearest point to the emergency with an assured supply of respirable air, illumination and communications with the surface.
- Team captain and map man shall report to the State Inspector in charge at the Fresh Air Base for brief / rotation of team.
- It is advisable to keep the number of personal at the fresh air base to a minimum due to if an unforeseen ignition/explosion occurs.
- It is recommended that one or two specially trained Emergency Medical Services personnel from the SMRT Team be at the fresh air base to treat any injuries to the rescue team members if they occur.
- Also, it is advisable that these EMS personal have the proper equipment to take baseline carboxyhemoglobin saturation test. This will ensure if any team members exceed the recommended standard set forth by the BDMS & MSHA.
- Drinking water or other replenishing fluids shall be supplied to the FAB for the team members.

Review

It is imperative that all personnel in the command center have periodic training to enhance their ability to make crucial decisions in a mine emergency. Through the use of classroom exercises, MERD's and other training tools required by Pa state, ongoing NIMS training, and Federal regulations, thus the command center personnel, support personnel, and the mine rescue teams can be better prepared for the actual event.

Emergency Equipment Inventory of Pa Bureau of Mine Safety

Cambria Office Mine Rescue Station

310 Industrial Park Rd.
Ebensburg PA 15931

1996 Mack-KME Rescue Vehicle

- (14) Draeger BG-4 SCBA's
- (6) Spare "D" oxygen cylinders for BG-4 (SCBA)
- (1) 6100 Test-It unit Drager BG-4
- (3) RZ-25 tester units for BG-4 SCBA
- (5) Industrial Scientific Ibred Oxygen/Methane/Carbon Monoxide detectors
- (25) Northern miner's cap lamps/with charger rack
- (1) Masterline oxygen pump
- (2) "K" size oxygen cylinders for refilling SCBA cylinders
- (2) Con-Space 1000+ foot lifeline communications system
- (1) Sound powered 1000-foot Lifeline communications systems
- (3) Kenwood TK-300 UHF programmable walkie-talkies
- (2) Emergency first responder First Aid kits
- (2) Fernco Mine Rescue stretcher
- (1) Drager BG-4 parts dryer
- (1) MPS digital pocket mini-anemometer
- (1) Kestrel digital 3000 multi-function anemometer
- (2) Military-style canvas rescue stretchers
- (1) Garmin Nuvee GPS navigator
- (1) Drager Thermal Imaging camera
- (2) Magnetic mine rescue map boards
- Mine tools
- (1) Med-Sled

In Station

- (1) Georgia SCBA parts dryer
- (1) Chest Freezer for icepack storage for SCBA's
- (1) Industrial Scientific M-4 docking/calibration station

Stored at Ebensburg Station

- (1) On board portable 110 VAC gasoline generator, removed & stored in station
- (2) Deep Well Torpedo pump/300 HP/460 VAC/11 inch/SunStar motor
- (2) Submersible pump/27 HP/240-460 VAC/4.75 Male thread/Flygt motor
- (1) Submersible pump/87 HP/460 VAC/6.75 Female Thread/Flygt motor

Marion Center Mine Rescue Station

21 Griffith Drive
Home, Pa

2009 Ford 550 Utility/trailer

- (1) Masterline oxygen pump
- Air conditioned/heat in workspace
- On-board emergency lighting
- On-board diesel 110/220 VAC generator
- 2,500 lbs capacity winch
- Double bowl sink with point of use hot water tank
 - External potable water inlet
- (14) Draeger BG-4 SCBA's
- (6) Spare "D" oxygen cylinders for BG-4 self-contained breathing apparatus (SCBA)
- (1) 6100 Test-It unit Drager BG-4
- (3) Rz-25 test unit
- (20) Northern miner's cap lamps/with charger rack
- (2) Con-Space 1000+ foot lifeline communications system
- (3) Sound powered 1000-foot Lifeline communications systems
- (3) Kenwood TK-300 UHF programmable walkie-talkies
- (2) Fernco Mine Rescue stretcher
- (5) Industrial Scientific Ibred Oxygen/Methane/Carbon Monoxide detectors
- (1) DM6 Dry mask SCBA parts dryer
- (1) Garmin Nuvee GPS navigator
- (1) Drager Thermal Imagining camera
- (4) mine rescue map boards
- (1) Med-Sled

In station

- (1) Georgia SCBA parts dryer
- (1) Chest Freezer for icepack storage for SCBA's
- (1) Industrial Scientific M-4 docking/calibration station

New Stanton Office Mine Rescue Station

131 Broadview Road
New Stanton, PA 15672

2007 Chevrolet 7500 Rescue vehicle

- o On-board Master line oxygen pump system
- o On-board emergency lighting
- o On-board diesel 110/220 generator
- o Double bowl sink with point of use hot water tank
- o External potable water inlet
- o Air conditioned/heat in workspace
- o Dual side awnings

(14) Drager BG-4 SCBA's

(6) Spare "D" oxygen cylinders for BG-4 SCBA's

(20) Northern miner's cap lamps/with charger rack

(5) Industrial Scientific Ibred Oxygen/Methane/Carbon Monoxide/Nitrogen dioxide detectors

(1) 6100 Test-It unit Drager BG-4

(3) RZ tester units for BG-4 SCBA

(1) Con-Space 1000+ foot lifeline communications system

(3) Kenwood TK-300 UHF programmable walkie-talkies

(1) Sound powered 1000-foot Lifeline communications systems

(1) Emergency first responder First Aid kits

(1) Stokes rescue stretcher

(2) "H" size O2 cylinders On truck.

(5) "K" size oxygen cylinders for refilling SCBA cylinders (In station)

Mine tools

(2) DM6 Dry mask SCBA parts dryer (In rescue station)

(1) Drager BG 4 Dryer (Located on the Truck)

(2) MPS digital pocket mini-anemometer

(1) Kestrel digital 3000 multi-function anemometer

(1) MSA Evolution 5000 series Thermal imaging camera

Tag # 1000508 S/N - AO 1795-E07

(1) Tool box containing various Wrenches, Screwdrivers, Pliers etc.

(2) Fernco Mine Rescue stretcher

(1) Garmin Nuvee GPS navigator

(2) Magnetic mine rescue map boards

(1) Med-Sled

In station

(1) Georgia SCBA parts dryer

(1) Chest Freezer for icepack storage for SCBA's

(1) Industrial Scientific M-4 docking/calibration station

