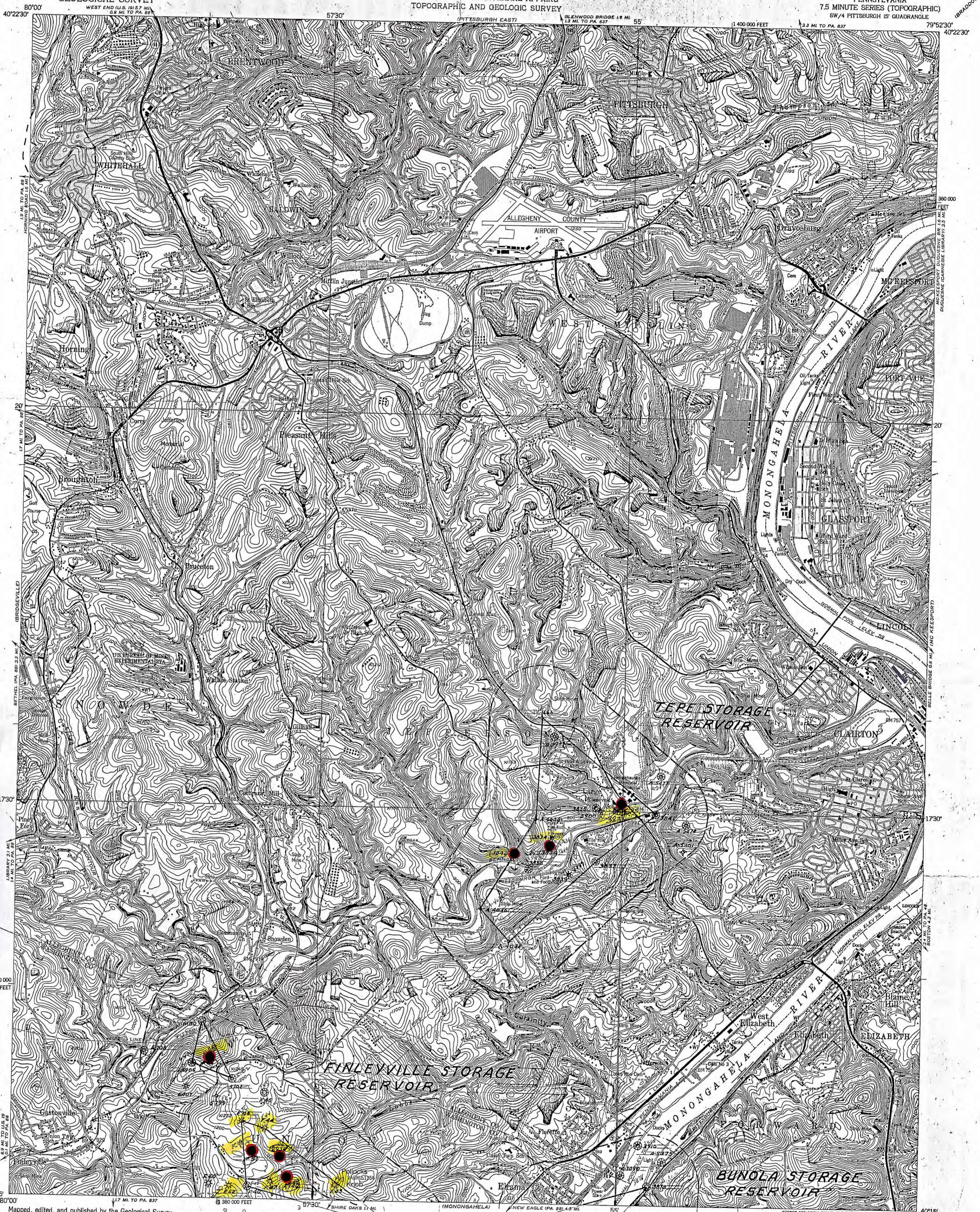
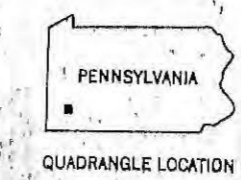
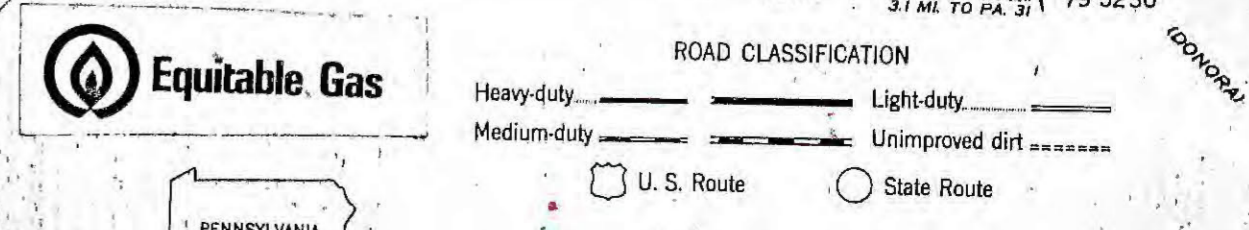
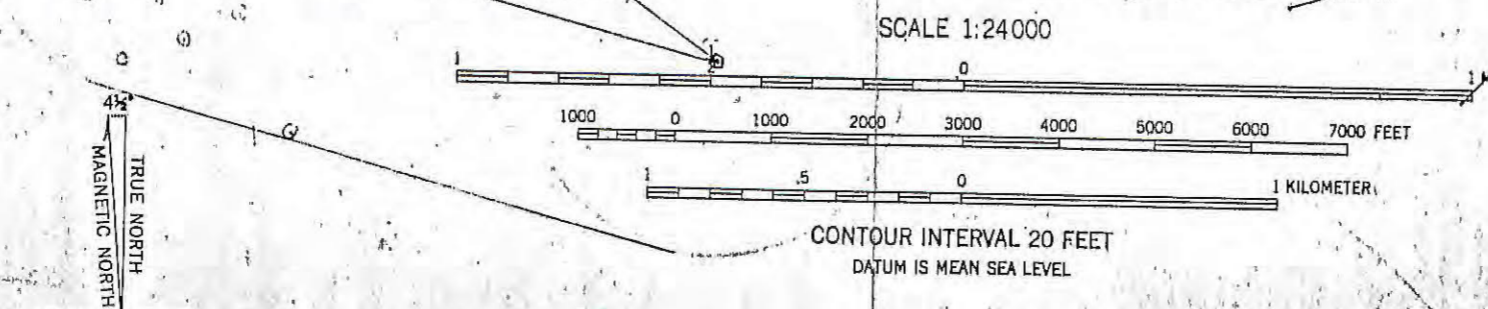


DISCLAIMER

The information presented on this map is provided "as is" without representation or warranty of any kind -- as to suitability, reliability, applicability, merchantability, fitness, non-infringement, result, outcome, or any other matter. The Department of Conservation and Natural Resources does not represent or warrant that such information is or will be always up-to-date, complete, or accurate. Any representation or warranty that might be otherwise implied is expressly disclaimed.



Mapped, edited, and published by the Geological Survey
Control by USGS, USC&GS, and City of Pittsburgh
Topography from aerial photographs by multiplex methods
Aerial photographs taken 1952. Field check 1953
Polyconic projection, 1927 North American datum
10,000-foot grid based on Pennsylvania coordinate system,
south zone
Red tint indicates areas in which only landmark buildings
are shown
Contours in strip mine areas compiled from 1952 photography
Broken contours in strip mine areas indicate mining since
photography



THIS MAP COMPLIES WITH NATIONAL MAP ACCURACY STANDARDS
FOR SALE BY U. S. GEOLOGICAL SURVEY, WASHINGTON 25, D. C.

GLASSPORT, PA.
SW/4 PITTSBURGH 15' QUADRANGLE
N4015-W7952.5/7.5