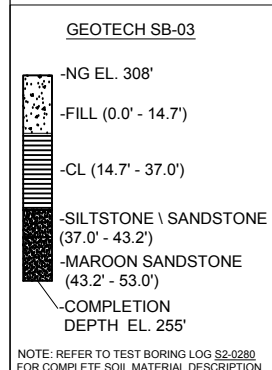


PLAN VIEW



PROFILE VIEW

YORK COUNTY, PENNSYLVANIA - FAIRVIEW TOWNSHIP  
 DAUPHIN COUNTY, PENNSYLVANIA - LOWER SWATARA TOWNSHIP  
 S2-0280A-16



NOTE: REFER TO TEST BORING LOG S2-0280 FOR COMPLETE SOIL MATERIAL DESCRIPTION

DESIGN AND CONSTRUCTION:

- CONTRACTOR SHALL FIELD VERIFY DEPTH OF ALL EXISTING UTILITIES SHOWN OR NOT SHOWN ON THIS DRAWING.
- THE MINIMUM SEPARATION DISTANCE FROM EXISTING SUBSURFACE UTILITIES SHALL NOT BE LESS THAN 10 FEET AS MEASURED FROM THE OUTSIDE EDGE OF THE UTILITY TO OUTSIDE OF PROPOSED PIPELINE.
- DESIGNED IN ACCORDANCE WITH CFR 49 195 & ASME B31.4
- CROSSING PIPE SPECIFICATION:  
 HDD HORZ. LENGTH (L)=6706'  
 HDD PIPE LENGTH (S)=6735'  
 16" x 0.438" W.T., X-70, API5L, PSL2, ERW, BFW  
 COATING: 14-16 MILS FBE WITH 40 MILS MIN. ARO (POWERCRETE R95)
- INTERNAL DESIGN PRESSURE 1480 PSIG (SEAM FACTOR 1.0, DESIGN FACTOR 0.50 (HOOP STRESS)).
- INSTALLATION METHOD: HORIZONTAL DIRECTIONAL DRILL (HDD).
- PIPELINE WARNING MARKERS SHALL BE INSTALLED ON BOTH SIDES OF ALL ROAD, RAILWAY, AND STREAM CROSSINGS.
- CARRIER PIPE NOT ENCASED.
- PIPE / AMBIENT TEMPERATURE MUST BE NO LESS THAN 30°F DURING PULLBACK WITHOUT PRIOR WRITTEN APPROVAL FROM THE ENGINEER.
- CONDUCT 4-HOUR PRE-INSTALLATION HYDROTEST OF HDD PIPE STRING TO MINIMUM 1850 PSIG.
- PIPELINE AND CROSSING TO BE INSTALLED AND MAINTAINED IN ACCORDANCE WITH LAST APPROVED AMERICAN RAILWAY ENGINEERING AND MAINTENANCE OF WAY ASSOCIATION SPECIFICATIONS FOR PIPELINES CONVEYING FLAMMABLE AND NON-FLAMMABLE SUBSTANCES.
- BLASTING NOT PERMITTED.
- SEE SUNOCO PENNSYLVANIA PIPELINE PROJECT ESRI WEBMAP FOR ACCESS ROAD ALIGNMENT.

NOTES

- ALL COORDINATES SHOWN ARE IN LATITUDE AND LONGITUDE. ALL MSL ELEVATIONS ARE NAD83
- STATIONING IS BASED ON HORIZONTAL DISTANCES
- ROONEY ENGINEERING, INC. AND SUNOCO PIPELINE, LP ARE NOT RESPONSIBLE FOR LOCATION OF FOREIGN UTILITIES SHOWN IN PLOT PLAN OR PROFILE. THE INFORMATION SHOWN HEREON IS FURNISHED WITHOUT LIABILITY ON THE PART OF ROONEY ENGINEERING, INC. AND SUNOCO PIPELINE, LP, FOR ANY DAMAGES RESULTING FROM ERRORS OR OMISSIONS THEREIN.
- CONTRACTOR IS RESPONSIBLE FOR LOCATING ALL UTILITIES. CONTACT ONE CALL AT 811 PRIOR TO DIGGING.
- SUNOCO EMERGENCY HOTLINE NUMBER IS #1-800-786-7440.

REF. DRAWING		REVISIONS	
ES-4.20	TO ES-4.04	NO.	DESCRIPTION
SHEET 13	TO SHEET 2	EP3	REVISED PER PADEP COMMENTS RECEIVED 01-30-17
		3	DESIGN CHANGE - RELOCATED DRILL ENTRY/EXIT
		2	REVISED PER ENGINEERING COMMENTS
		1	REVISED PER COMMENTS FROM REI REVIEW
		0	ISSUED FOR CONSTRUCTION
DWG NO	DWG NO	NO.	DESCRIPTION

**Sunoco Logistics Partners L.P.**

**TETRA TECH ROONEY**  
 (303) 792-5911

**SUNOCO PIPELINE, L.P.**

16-INCH HORIZONTAL DIRECTIONAL DRILL  
 SUSQUEHANNA RIVER  
 PENNSYLVANIA PIPELINE PROJECT

SCALE: 1"=300' DWG. NO: PA-YO-0063.0000-RRa-16