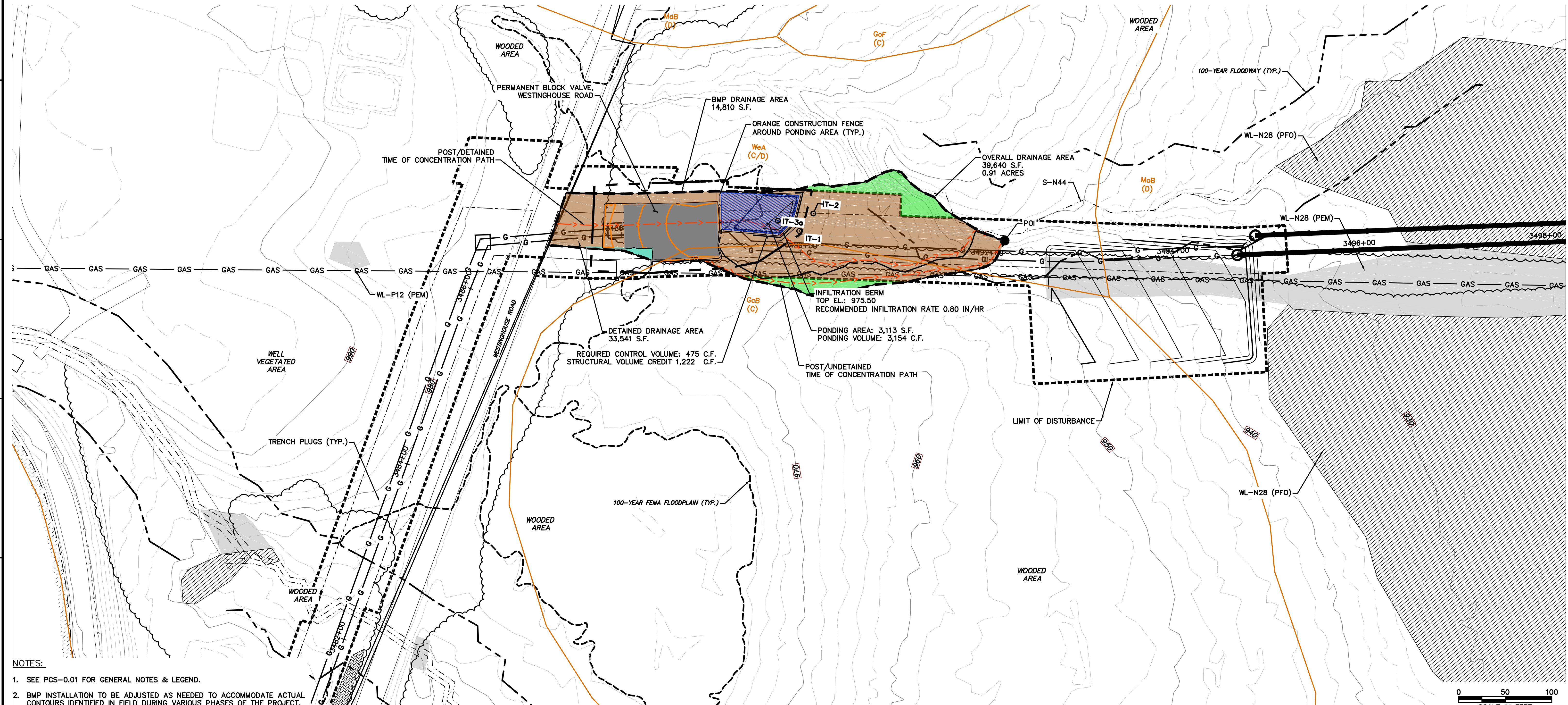
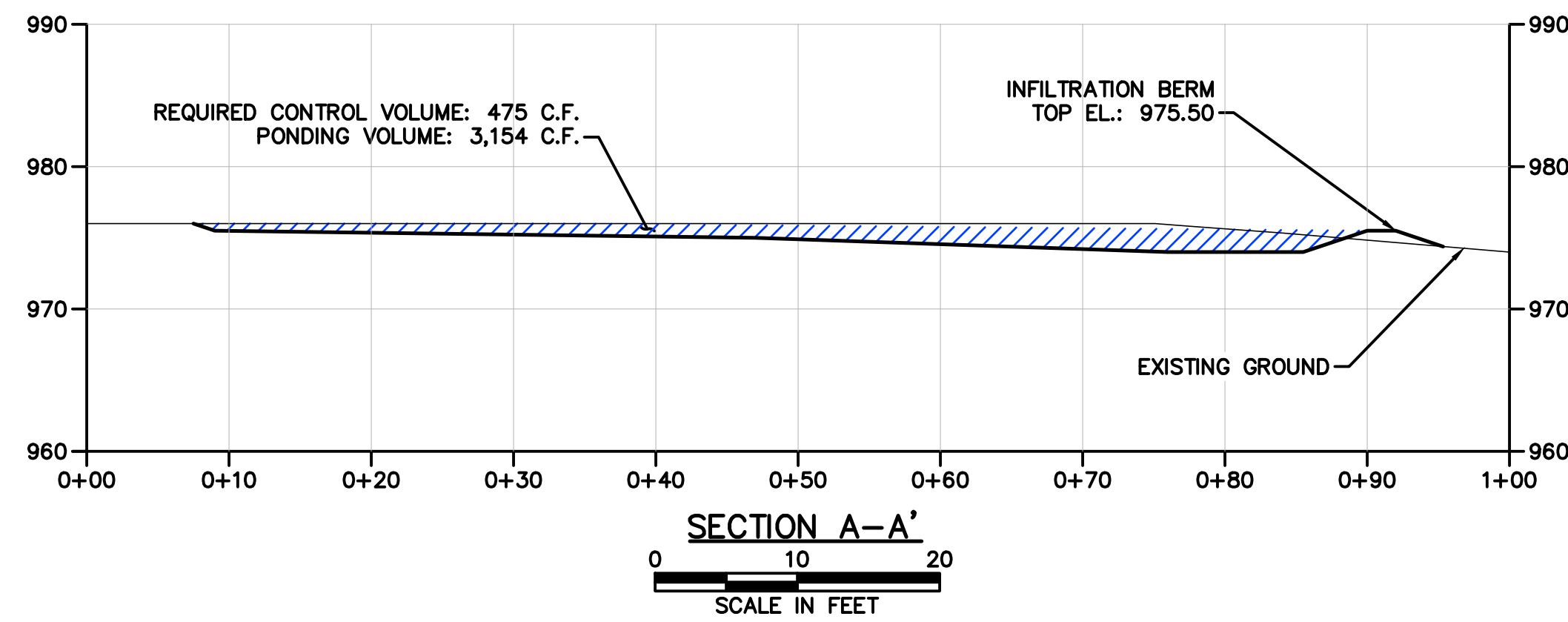
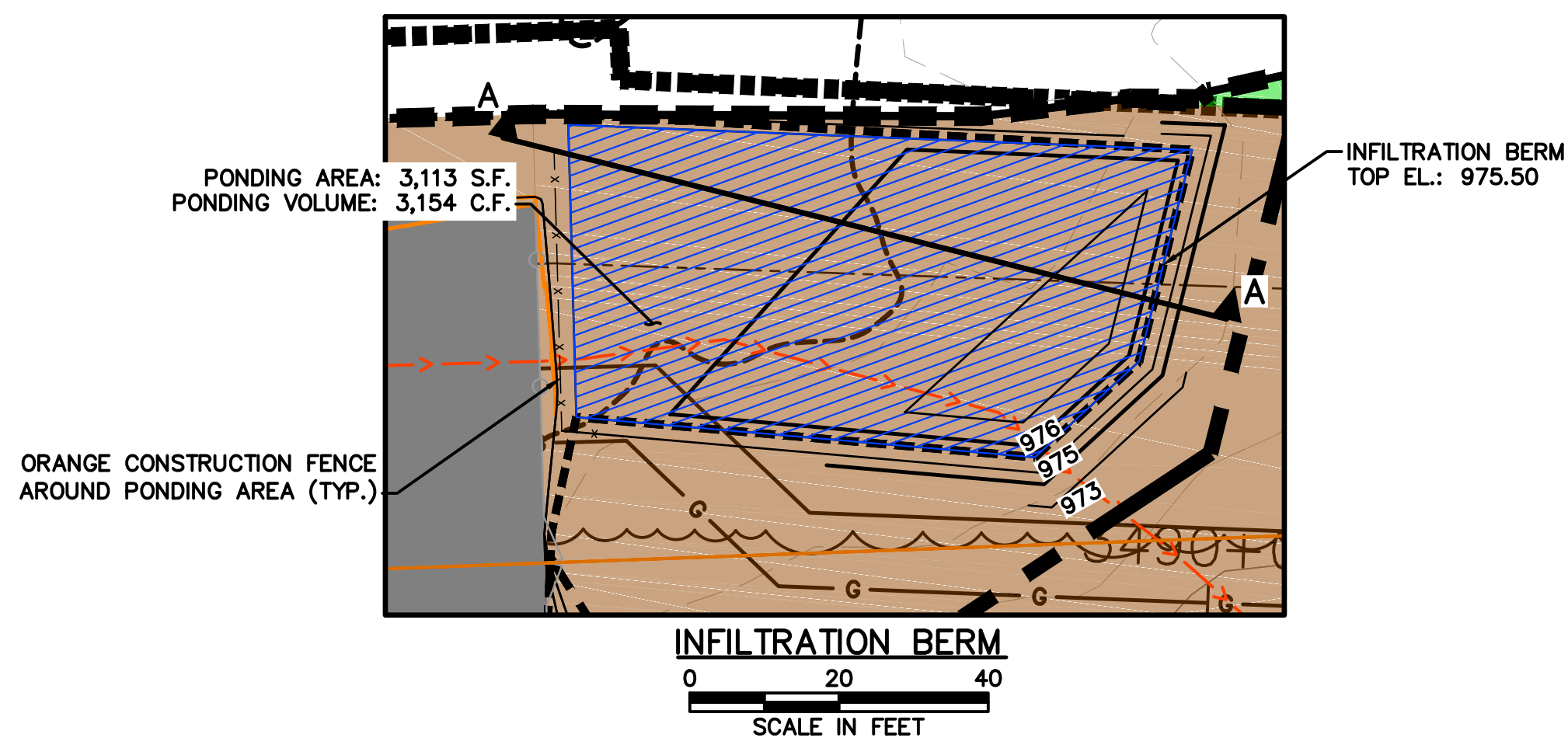


| Post-Construction Undetained Drainage Area |             |         |                  |
|--|-------------|---------|------------------|
| Land Use                                   | Square Feet | Acreage | Hydrologic Group |
| Meadow                                     | 1,307       | 0.03    | D                |
| Meadow                                     | 3,049       | 0.07    | C                |
| Woods                                      | 1,742       | 0.04    | C                |

| Post-Construction Detained Drainage Area |             |         |                  |
|--|-------------|---------|------------------|
| Land Use                                 | Square Feet | Acreage | Hydrologic Group |
| Meadow                                   | 20,038      | 0.46    | D                |
| Woods                                    | 2,614       | 0.06    | D                |
| Impervious - Gravel                      | 5,537       | 0.13    | D                |
| Meadow                                   | 4,792       | 0.11    | C                |
| Impervious - Gravel                      | 436         | 0.01    | C                |

| Post-Development Condition within LOD |             |         |                  |
|---------------------------------------|-------------|---------|------------------|
| Land Use                              | Square Feet | Acreage | Hydrologic Group |
| Meadow                                | 21,780      | 0.50    | D                |
| Impervious Gravel                     | 5,537       | 0.13    | D                |
| Meadow                                | 7,405       | 0.17    | C                |
| Impervious Gravel                     | 479         | 0.01    | C                |



NOTES:  
 1. SEE PCS-0.01 FOR GENERAL NOTES & LEGEND.  
 2. BMP INSTALLATION TO BE ADJUSTED AS NEEDED TO ACCOMMODATE ACTUAL CONTOURS IDENTIFIED IN FIELD DURING VARIOUS PHASES OF THE PROJECT.

**TETRA TECH**  
 www.tetrattech.com  
 661 ANDERSEN DRIVE - FOSTER PLAZA 7  
 PITTSBURGH, PA 15220  
 T: (412) 921-7090 | F: (412) 921-4040

| REVISIONS |    |      |         |
|-----------|----|------|---------|
| NO.       | BY | DATE | REMARKS |
|           |    |      |         |
|           |    |      |         |

SUNOCO PIPELINE L.P.  
 SINKING SPRING, PENNSYLVANIA  
**PENNSYLVANIA PIPELINE PROJECT  
 CONSTRUCTION SPREAD 2**

1-20" & 1-16" PROPOSED WELDED STEEL NATURAL GAS LIQUIDS PIPELINES

WESTINGHOUSE ROAD BLOCK VALVE  
 POST CONSTRUCTION STORMWATER MANAGEMENT PLAN

DATE: 5/31/16  
 PROJECT NO.: 112IC05958  
 DESIGNED BY: JB  
 DRAWN BY: GR  
 CHECKED BY: RS  
 COPYRIGHT TETRA TECH INC.  
**PCS-2.03B**  
 SHEET 2.03B OF 20