

# Building support infrastructure



# New Businesses





# Boost to existing businesses



# Local business expansion













# Vast amount of \$\$ spent on roads









# Disturbance during road construction





# Spring thaw road problems

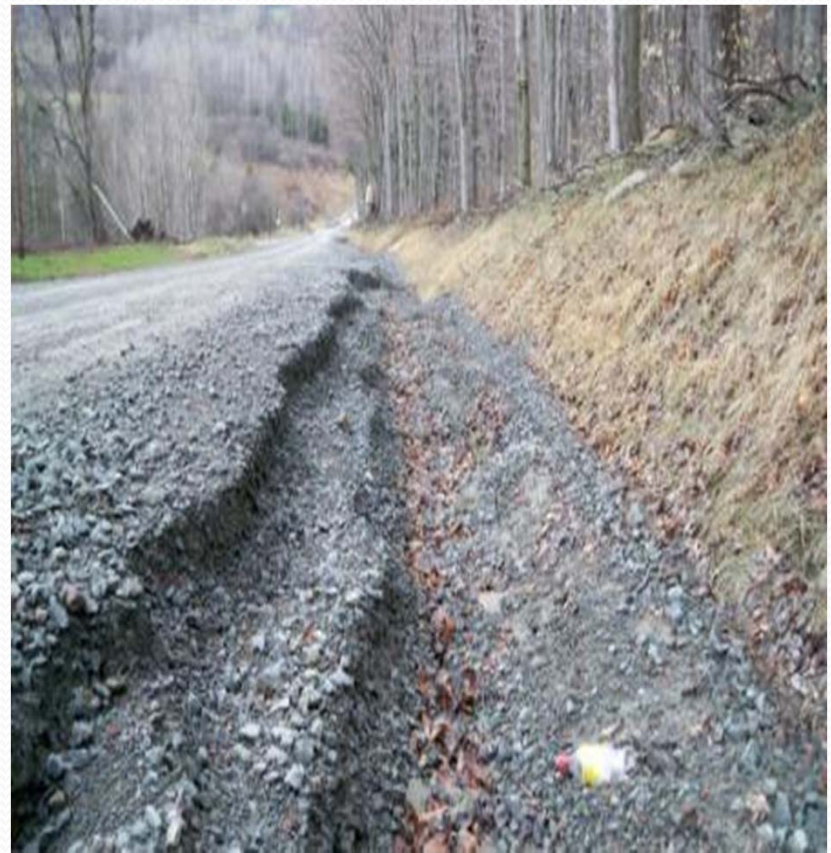








# Eroded ditches





# In the stream





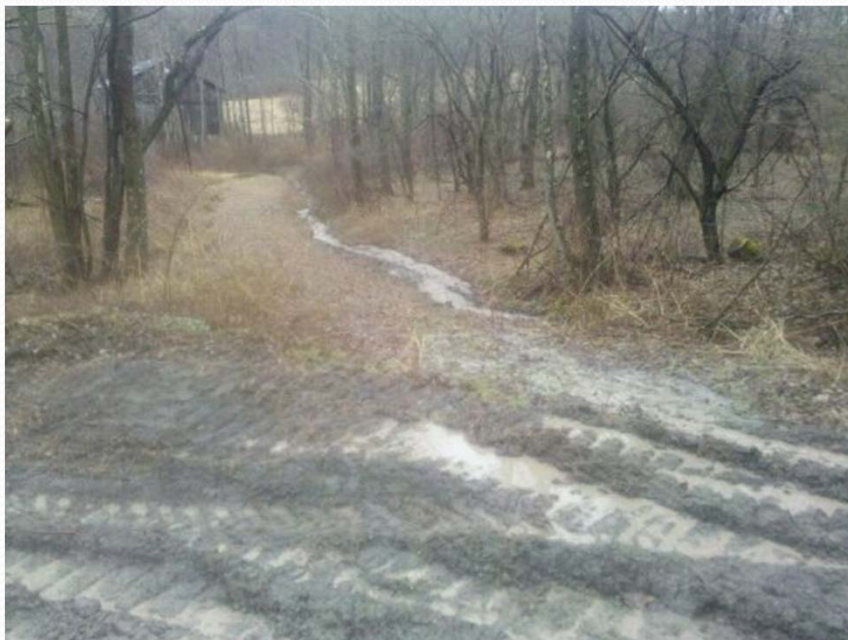




# Added road fill creates deep storm water ditches









# Well pad built in floodplain. Access road built in wetlands





# Changing Landscape













# Rural traffic jam





# Many miles of gathering lines













