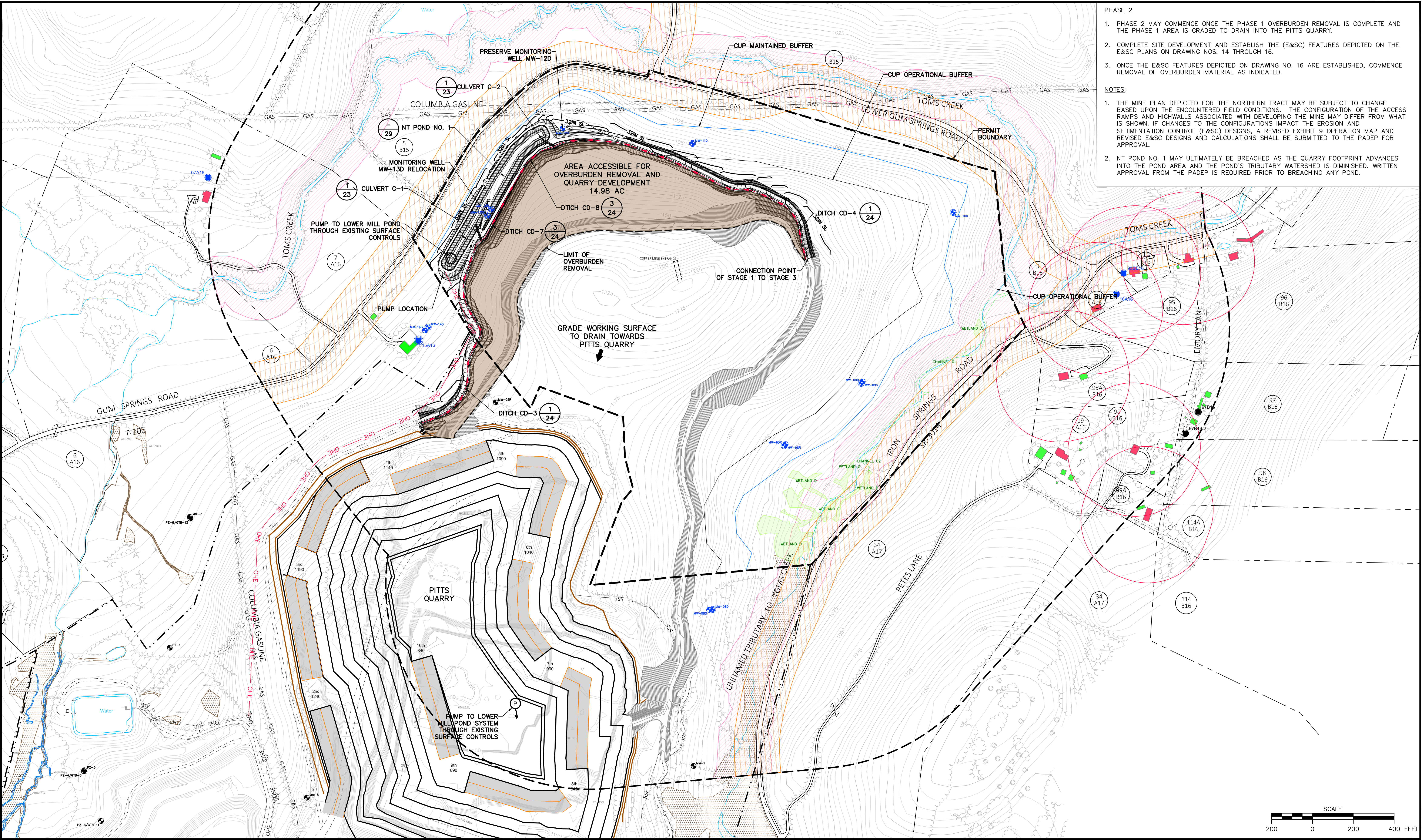


Monday, April 16, 2018 9:33:22 AM

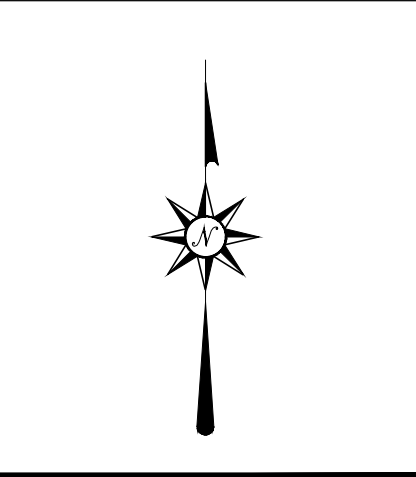
R: 2015152596 - SGI Disposal Embankment Drawings Northern Tract Quarry Site Development-Phase 2-R1.dwg



- PHASE 2
1. PHASE 2 MAY COMMENCE ONCE THE PHASE 1 OVERBURDEN REMOVAL IS COMPLETE AND THE PHASE 1 AREA IS GRADED TO DRAIN INTO THE PITTS QUARRY.
  2. COMPLETE SITE DEVELOPMENT AND ESTABLISH THE (E&S) FEATURES DEPICTED ON THE E&S PLANS ON DRAWING NOS. 14 THROUGH 16.
  3. ONCE THE E&S FEATURES DEPICTED ON DRAWING NO. 16 ARE ESTABLISHED, COMMENCE REMOVAL OF OVERBURDEN MATERIAL AS INDICATED.
- NOTES:
1. THE MINE PLAN DEPICTED FOR THE NORTHERN TRACT MAY BE SUBJECT TO CHANGE BASED UPON THE ENCOUNTERED FIELD CONDITIONS. THE CONFIGURATION OF THE ACCESS RAMPS AND HIGHWALLS ASSOCIATED WITH DEVELOPING THE MINE MAY DIFFER FROM WHAT IS SHOWN. IF CHANGES TO THE CONFIGURATIONS IMPACT THE EROSION AND SEDIMENTATION CONTROL (E&S) DESIGNS, A REVISED EXHIBIT 9 OPERATION MAP AND REVISED E&S DESIGNS AND CALCULATIONS SHALL BE SUBMITTED TO THE PADEP FOR APPROVAL.
  2. NT POND NO. 1 MAY ULTIMATELY BE BREACHED AS THE QUARRY FOOTPRINT ADVANCES INTO THE POND AREA AND THE POND'S TRIBUTARY WATERSHED IS DIMINISHED. WRITTEN APPROVAL FROM THE PADEP IS REQUIRED PRIOR TO BREACHING ANY POND.

NOTES / REVISIONS	
PADEP-DMO	4/17/2018
ISSUED FOR	REVISED PER PADEP-DMO COMMENT LETTER DATED 3/6/2018
DATE	REVISION DESCRIPTION
REV.	MADE BY
	CHKD BY
	DATE

SEAL:



**D'APPOLONIA**  
 101 RUDI ROAD, FLOOR 2  
 PITTSBURGH, PENNSYLVANIA 15235-4559  
 (412) 856-9440 FAX (412) 856-9535

**SGI**

PROJECT NUMBER: 152596A  
 FILE NAME: Exhibit 12-Quarry Site Development-Phase 2-R1.dwg

DRAWN BY: AJM  
 CHECKED BY: RMS/MDW

DATE: 4/16/2018  
 DATE: 12/22/2017

**SPECIALTY GRANULES LLC**  
**CHARMIAN - NORTHERN TRACT QUARRY**

EXHIBIT 9  
 QUARRY SITE DEVELOPMENT - PHASE 2

SCALE: AS SHOWN  
 DRAWING NO. 7  
 REV 1