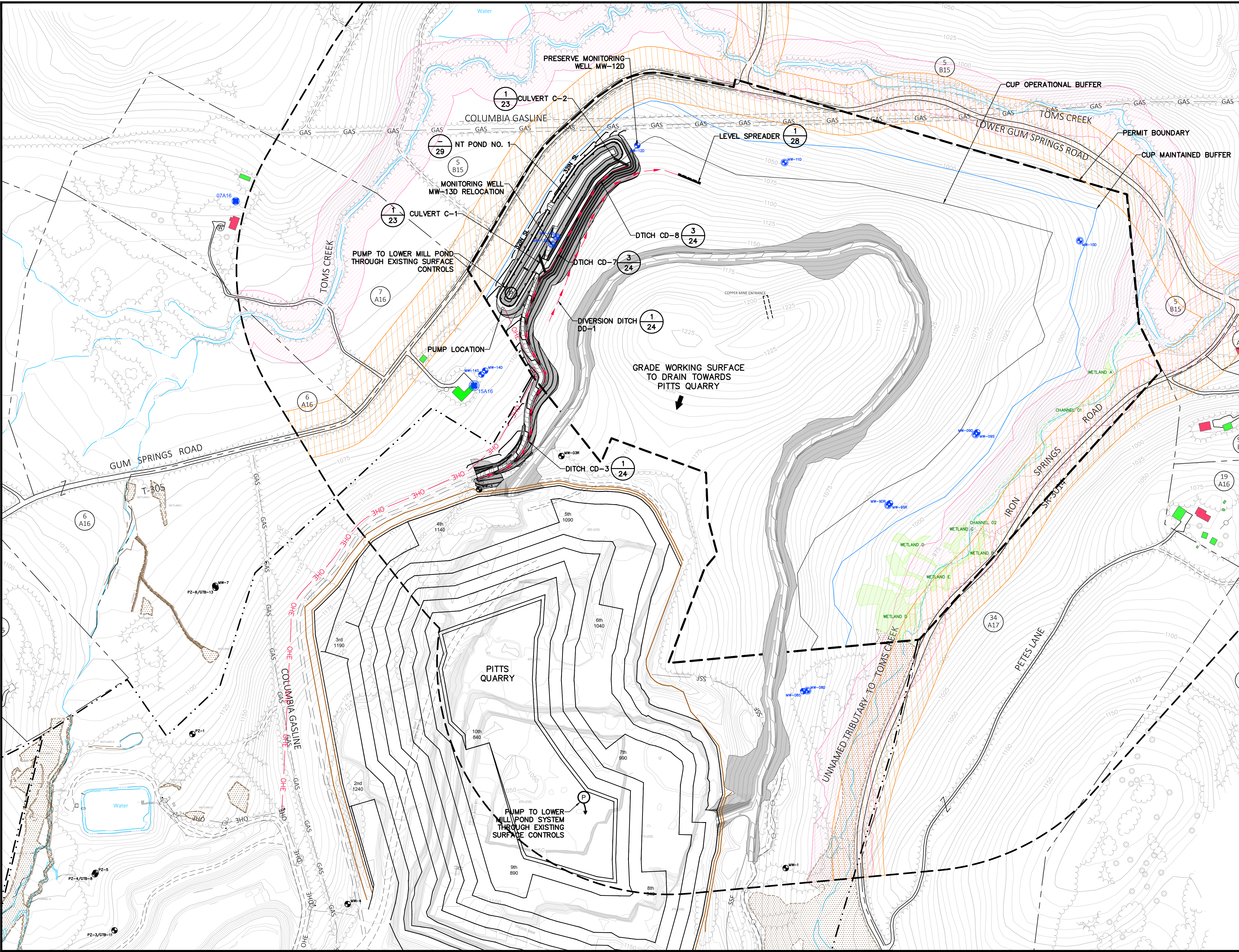


Wednesday, January 3, 2018 4:21:06 PM

R:\2015\152596 - SGI Disposal Embankment\Drawings Northern Tract\Exhibit 12-E&SC Stage 2-R0.dwg

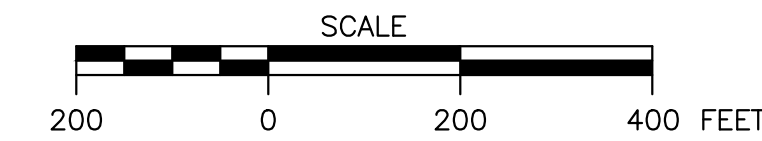


E&SC STAGE 2

1. E&SC STAGE 2 MAY COMMENCE ONCE DITCHES CD-1 AND CD-2 FROM STAGE 1 ARE ESTABLISHED AND/OR THE PHASE 1 AREA IS GRADED TO DRAIN INTO THE PITTS QUARRY.
2. COMPLETE INITIAL CLEARING OF TREES AS NEEDED TO FACILITATE EQUIPMENT ACCESS FOR INSTALLATION OF DIVERSION DITCH DD-1 AND THE LEVEL SPREADER. INSTALL THE DIVERSION DITCH DD-1 AND THE LEVEL SPREADER ALONG THE ALIGNMENT SHOWN.
3. CLEAR TREES AS NEEDED TO FACILITATE EQUIPMENT ACCESS FOR COMPOST FILTER SOCK INSTALLATION. INSTALL FILTER SOCK AT LOCATIONS SHOWN ON THE PLAN.
4. COMPLETE GRUBBING AND TREE CLEARING AND STRIP OVERBURDEN SOIL FROM THE FOOTPRINT OF THE ACCESS ROAD, COLLECTION DITCH CD-3 AND NT POND NO. 1. OVERBURDEN SOIL IS TO BE STOCKPILED AT A LOCATION SPECIFIED BY SGI, OR USED FOR NORTHERN TRACT RECLAMATION ACTIVITIES.
5. CONSTRUCT NT POND NO. 1 AND COLLECTION DITCHES CD-7 AND CD-8. ABANDON MONITORING WELL MW-13D, CONCURRENTLY.
6. AS THE SUBGRADE OF THE POND BOTTOM IS EXPOSED, THE ROCK STRUCTURE SHALL BE EVALUATED TO DETERMINE IF A POND LINER IS REQUIRED TO HOLD STORMWATER.
7. INSTALL PUMPING STATION IN NT POND NO. 1 FOR ROUTINE DEWATERING AND NORMAL POOL MAINTENANCE.
8. CONSTRUCT THE ACCESS ROAD AND COLLECTION DITCH CD-3, STARTING AT THE DOWNSTREAM END AND WORKING UPSTREAM.
9. RE-ESTABLISH MW-13D AS SHOWN.

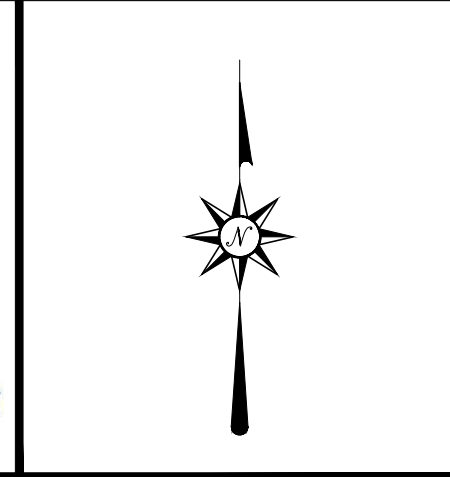
GENERAL NOTE

1. SHALLOW SURFACE BLASTING, IF NEEDED, MAY BE USED TO FACILITATE ROCK EXCAVATION FOR POND, ROAD, AND DITCH DEVELOPMENT. THIS BLASTING WILL BE APPROVED THROUGH COLUMBIA GAS, AS APPLICABLE, AND THE PADEP PRIOR TO INITIATING BLASTING ACTIVITIES.



NOTES / REVISIONS			
REV.	DATE	ISSUED FOR	REVISION DESCRIPTION

SEAL:



D'APPOLONIA
 701 RUDI ROAD, FLOOR 2
 PITTSBURGH, PENNSYLVANIA 15235-4559
 (412) 856-9440 FAX (412) 856-8535

PROJECT NUMBER: 152596A
 FILE NAME: Exhibit 12-E&SC Stage 2-R0.dwg

DRAWN BY: AJM
 CHECKED BY: RMS/MDW

DATE: 12/14/2017
 DATE: 12/22/2017

SPECIALTY GRANULES LLC
CHARMIAN - NORTHERN TRACT QUARRY

EXHIBIT 12
 E&SC STAGE 2

SCALE: AS SHOWN
 DRAWING NO. 14
 REV 0