

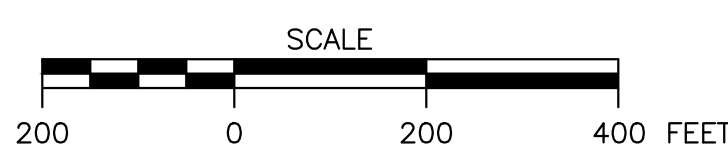
**E&SC STAGE 4**

- ONCE NT POND NO. 1 AND THE RELATED FEATURES ARE ESTABLISHED, COMPLETE ANY GRUBBING AND TREE CLEARING AND STRIP OVERBURDEN SOIL FROM THE OVERBURDEN REMOVAL AREA INDICATED ON EXHIBIT 9. OVERBURDEN SOIL IS TO BE STOCKPILED AT A LOCATION SPECIFIED BY SGI OR BE USED FOR NORTHERN TRACT RECLAMATION ACTIVITIES.

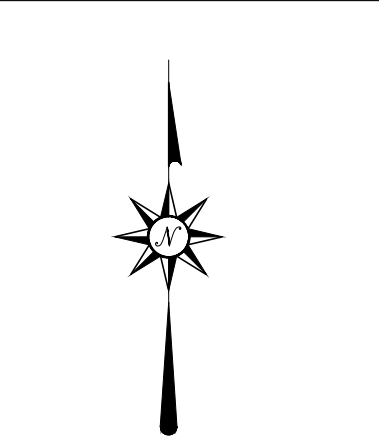
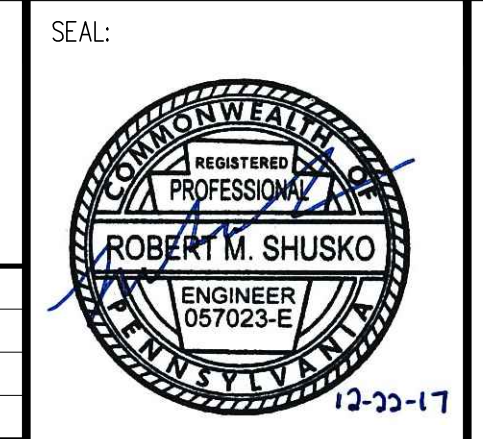
**GENERAL NOTE**

- SHALLOW SURFACE BLASTING, IF NEEDED, MAY BE USED TO FACILITATE ROCK EXCAVATION FOR POND, ROAD, AND DITCH DEVELOPMENT. THIS BLASTING WILL BE APPROVED THROUGH COLUMBIA GAS, AS APPLICABLE, AND THE PADEP PRIOR TO INITIATING BLASTING ACTIVITIES.

Wednesday, January 3, 2018 4:34:25 PM  
 R: 2015152596 - SGI Disposal Embankment Drawings Northern Tract Exhibit 12-E&SC Stage 4-R0.dwg



NOTES / REVISIONS			
REV.	DATE	ISSUED FOR	REVISION DESCRIPTION



**D'APPOLONIA**  
 701 RUDI ROAD, FLOOR 2  
 PITTSBURGH, PENNSYLVANIA 15235-4559  
 (412) 856-9440 FAX (412) 856-8535

**SKELLY AND LOY**  
 ENGINEERING - ENVIRONMENTAL  
 CONSULTANTS

**SGI**

PROJECT NUMBER: 152596A  
 FILE NAME: Exhibit 12-E&SC Stage 4-R0.dwg

DRAWN BY: AJM  
 CHECKED BY: RMS/MDW

DATE: 12/14/2017  
 DATE: 12/22/2017

**SPECIALTY GRANULES LLC**  
**CHARMIAN - NORTHERN TRACT QUARRY**

EXHIBIT 12  
 E&SC STAGE 4

SCALE: AS SHOWN  
 DRAWING NO. 16  
 REV 0