

Legend

- Proposed Centerline
- County Boundary
- State Boundary

Project Location

0 2 4 8 Miles

1 inch = 4 miles

Project Location Sheet Key for the Sunoco Pennsylvania Pipeline Project, Westmoreland County, PA.

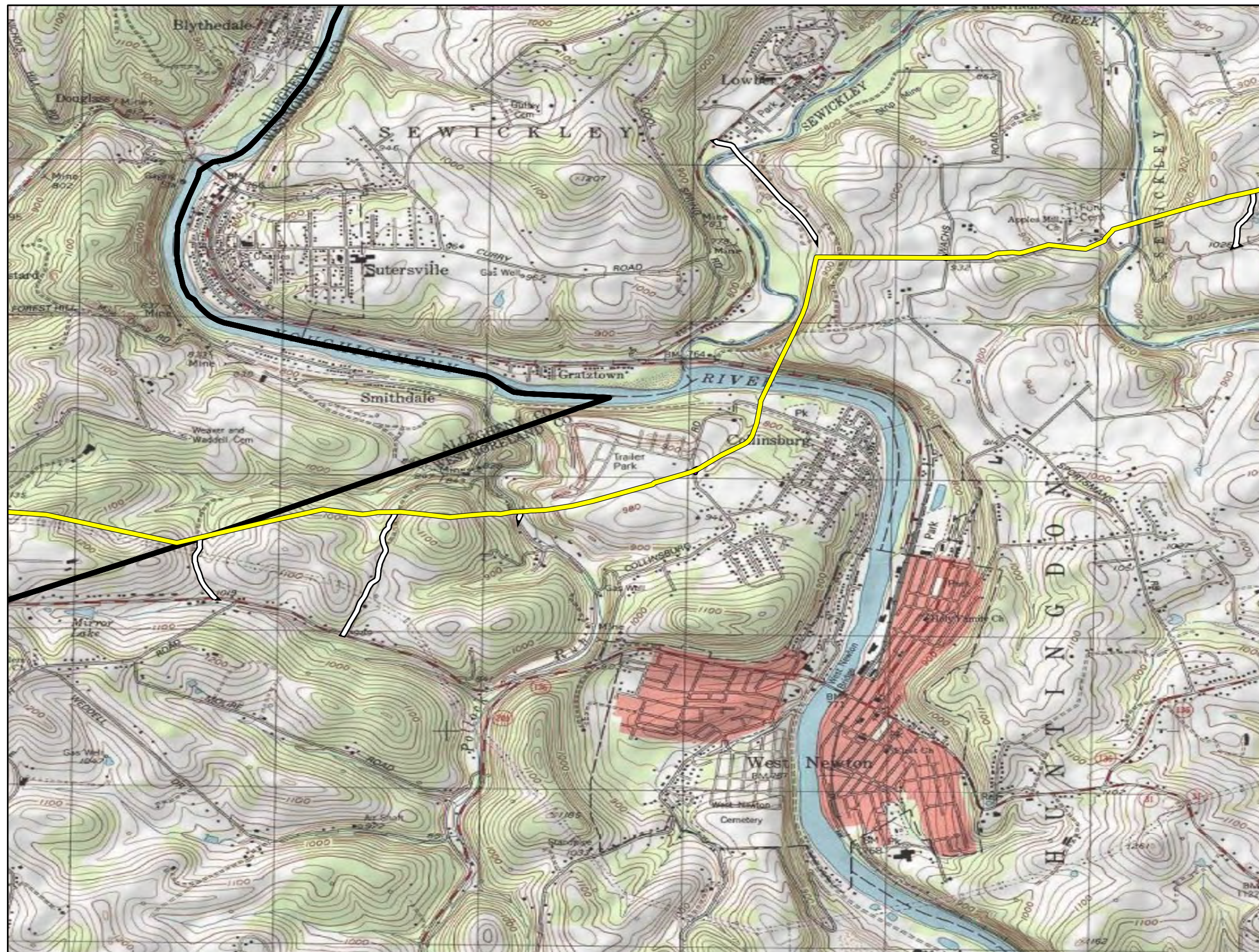
Prepared By: TETRA TECH

Prepared for: Sunoco Logistics

Base Map: ESRI ArcGIS Online
Coordinate System: NAD 83 UTM 17N

Date:
03/2016

P:\Users\zrip1\WEAP\Projects\GIS\Projects\172\03050606-PP\PP\MXD\Permits\Resubmission\Location\Maps\USGS_SheetKey.mxd LN



- Legend**
- Proposed Centerline
 - ROW - Permanent Access Road
 - ROW - Temporary Access Road
 - Pump Station LOD
 - County Boundary
 - State Boundary

Sheet Identifier

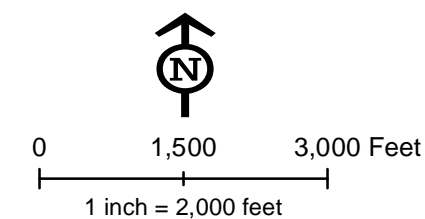
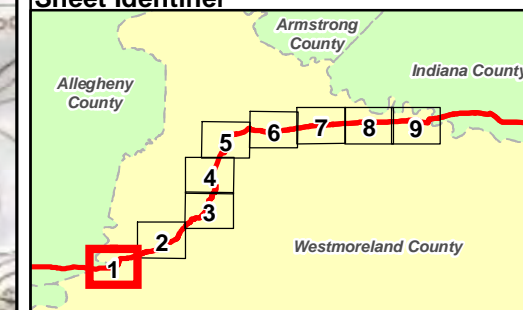


Figure 1. Project Location for the Sunoco Pennsylvania Pipeline Project, Westmoreland County, PA.
Sheet 1 of 9

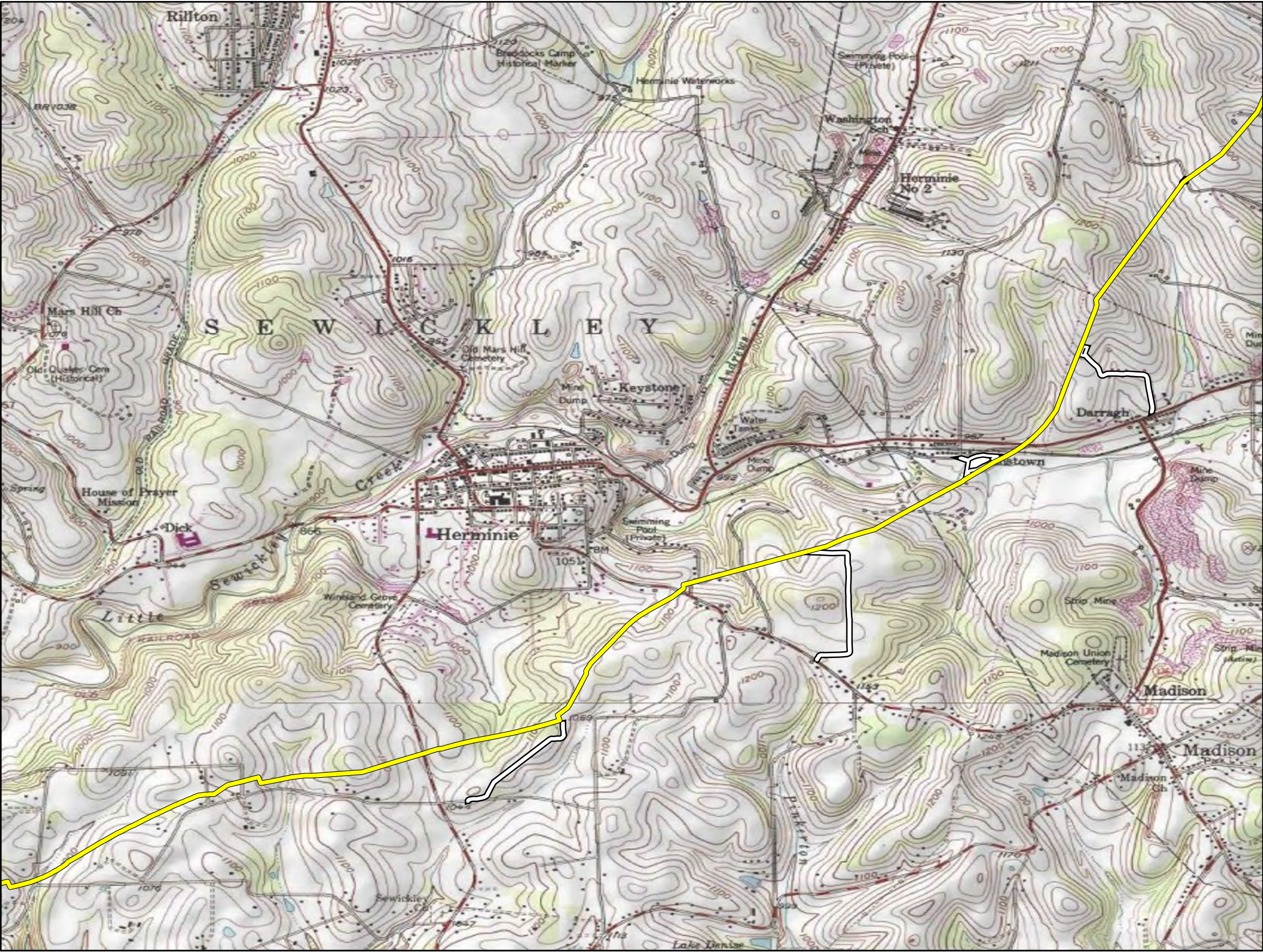
Prepared By:  **TETRA TECH**

Prepared for:  **Sunoco Logistics**

Base Map: ESRI ArcGIS Online
Coordinate System: NAD 83 UTM 17N

Date:
03/2016

P:\GIS\Projects\17205566-PPP\WAD\Permits\CountyPermits\Resubmission\Location\Maps\WestmorelandCo_USGS.mxd LN



Legend

- Proposed Centerline
- ROW - Permanent Access Road
- ROW - Temporary Access Road
- Pump Station LOD
- County Boundary
- State Boundary

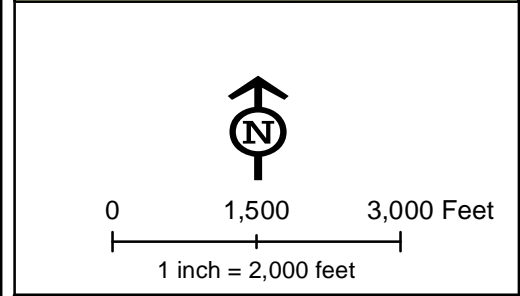
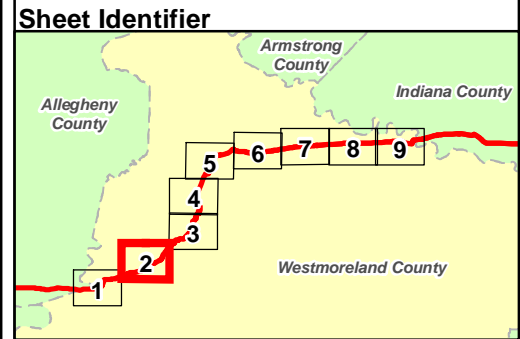
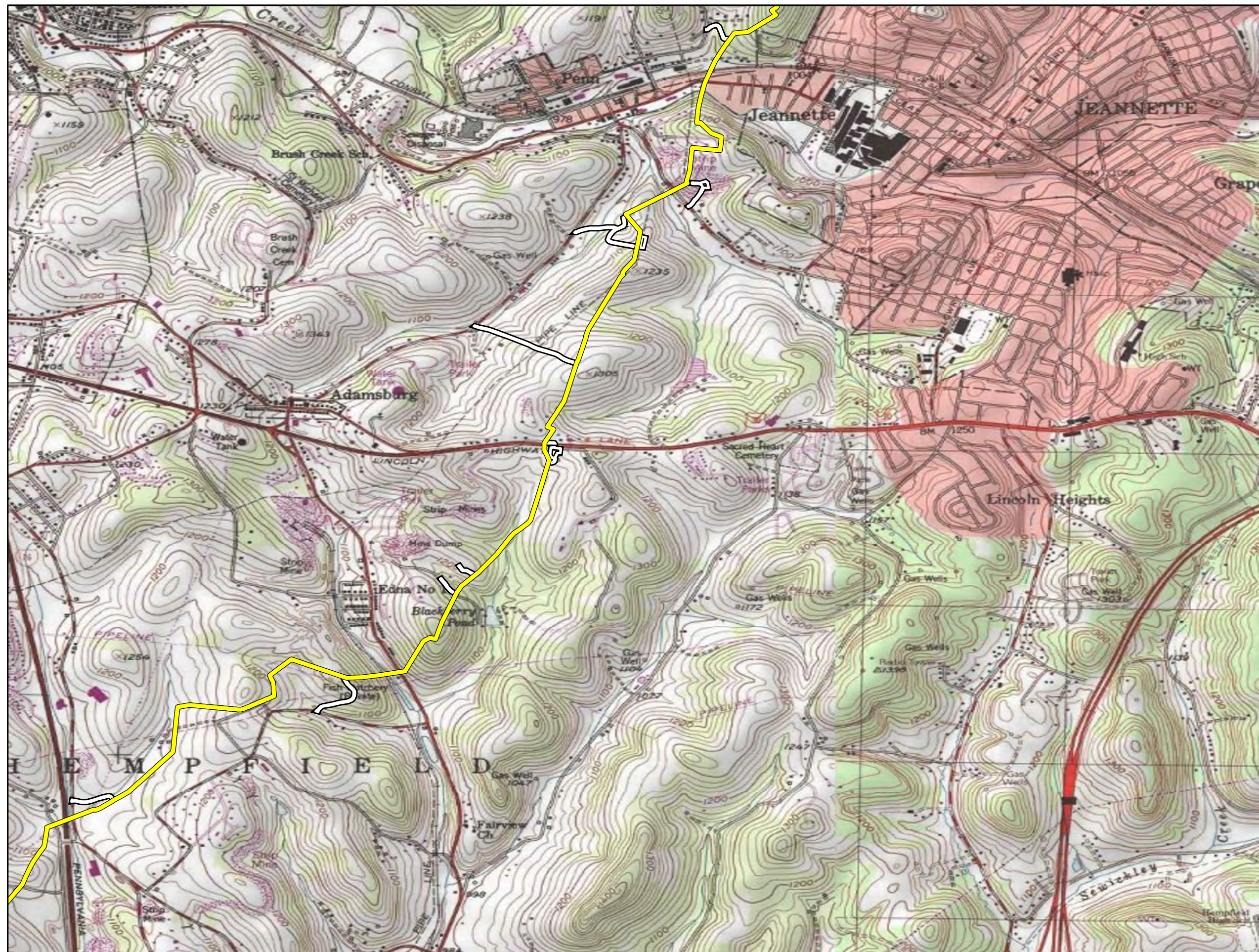


Figure 1. Project Location for the Sunoco Pennsylvania Pipeline Project, Westmoreland County, PA.
Sheet 2 of 9

Prepared By: TETRA TECH

Prepared for: Sunoco Logistics

Base Map: ESRI ArcGIS Online
Coordinate System: NAD 83 UTM 17N
Date: 03/2016



- Legend**
- Proposed Centerline
 - ROW - Permanent Access Road
 - ROW - Temporary Access Road
 - Pump Station LOD
 - County Boundary
 - State Boundary

Sheet Identifier

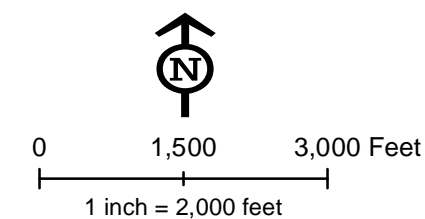
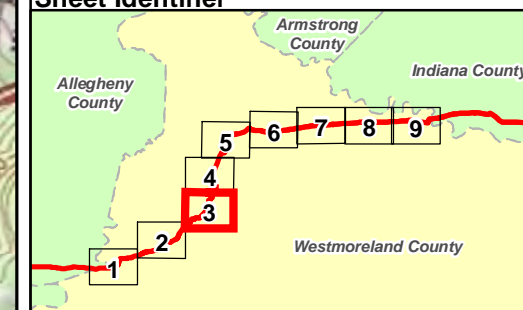
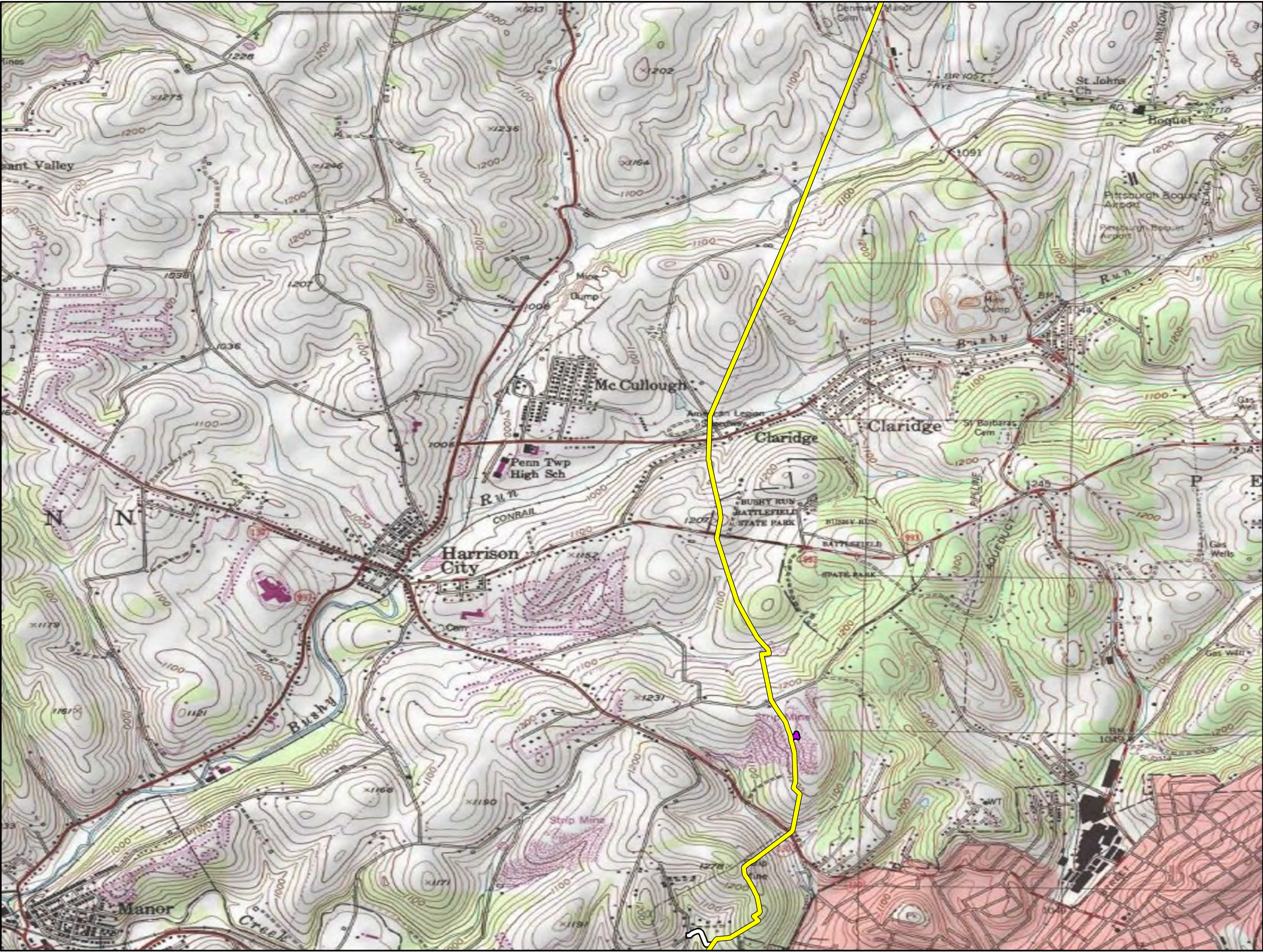


Figure 1. Project Location for the Sunoco Pennsylvania Pipeline Project, Westmoreland County, PA.
Sheet 3 of 9

Prepared By:  **TETRA TECH**

Prepared for:  **Sunoco Logistics**

Base Map: ESRI ArcGIS Online
Coordinate System: NAD 83 UTM 17N
Date:
03/2016



Legend

- Proposed Centerline
- ROW - Permanent Access Road
- ROW - Temporary Access Road
- Pump Station LOD
- County Boundary
- State Boundary

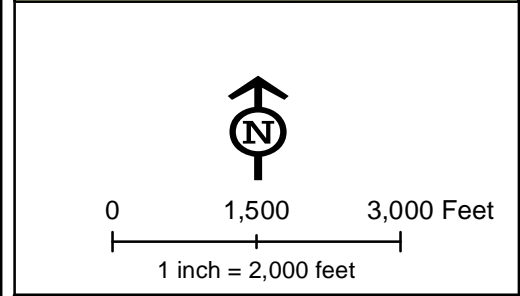
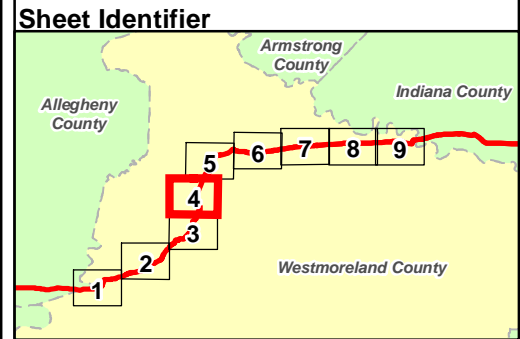


Figure 1. Project Location for the Sunoco Pennsylvania Pipeline Project, Westmoreland County, PA.
Sheet 4 of 9

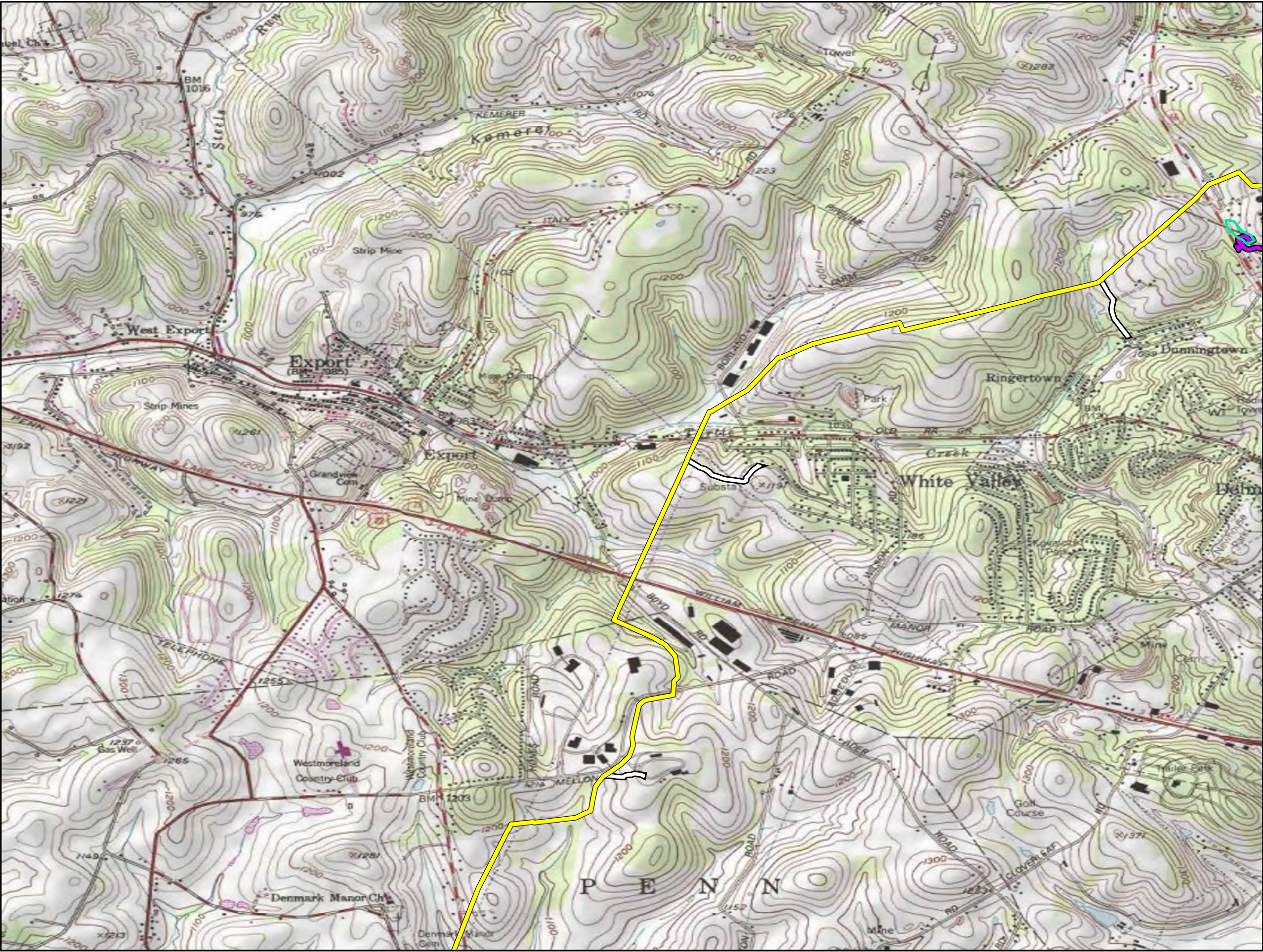
Prepared By: **TETRA TECH**

Prepared for: **Sunoco Logistics**

Base Map: ESRI ArcGIS Online
Coordinate System: NAD 83 UTM 17N

Date:
03/2016

P:\GIS\Projects\17205566-PP-PA\Map\Permits\Resubmission\Location\Maps\WestmorelandCo_USGS.mxd LN



- Legend**
- Proposed Centerline
 - ROW - Permanent Access Road
 - ROW - Temporary Access Road
 - Pump Station LOD
 - County Boundary
 - State Boundary

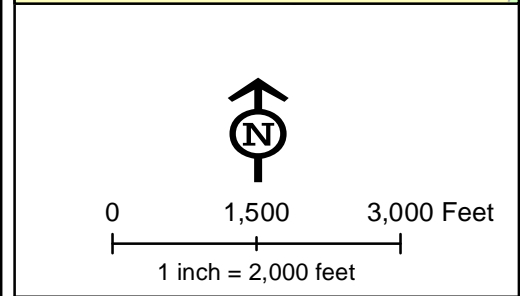
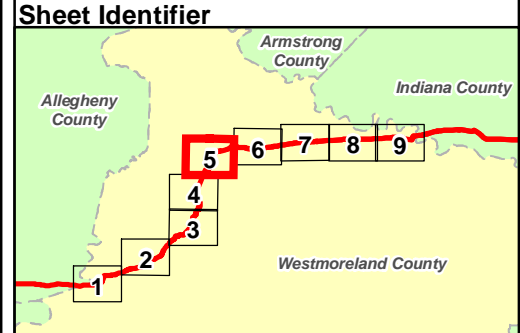


Figure 1. Project Location for the Sunoco Pennsylvania Pipeline Project, Westmoreland County, PA.
Sheet 5 of 9

Prepared By:  **TETRA TECH**

Prepared for:  **Sunoco Logistics**

Base Map: ESRI ArcGIS Online
Coordinate System: NAD 83 UTM 17N

Date:
03/2016



- Legend**
- Proposed Centerline
 - ROW - Permanent Access Road
 - ROW - Temporary Access Road
 - Pump Station LOD
 - County Boundary
 - State Boundary

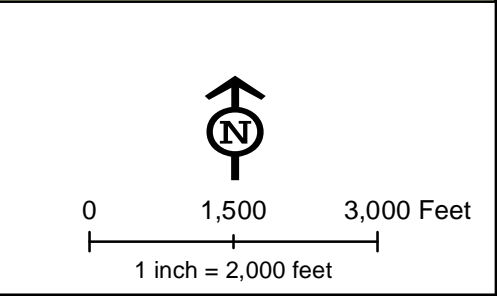
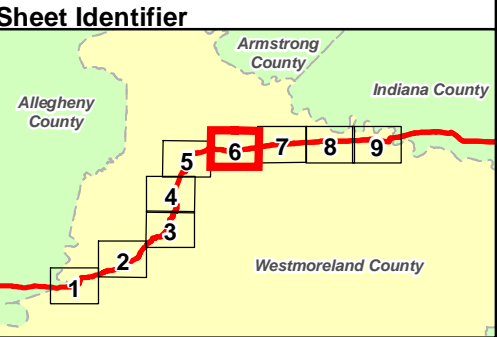


Figure 1. Project Location for the Sunoco Pennsylvania Pipeline Project, Westmoreland County, PA.
Sheet 6 of 9

Prepared By:  **TETRA TECH**

Prepared for:  **Sunoco Logistics**

Base Map: ESRI ArcGIS Online
Coordinate System: NAD 83 UTM 17N

Date:
03/2016



- Legend**
- Proposed Centerline
 - ROW - Permanent Access Road
 - ROW - Temporary Access Road
 - Pump Station LOD
 - County Boundary
 - State Boundary

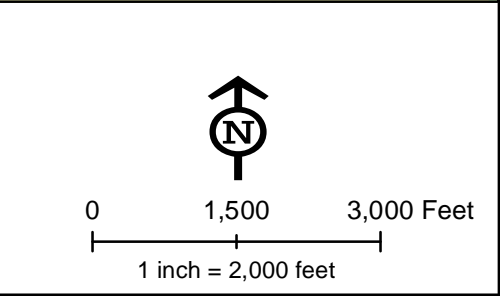
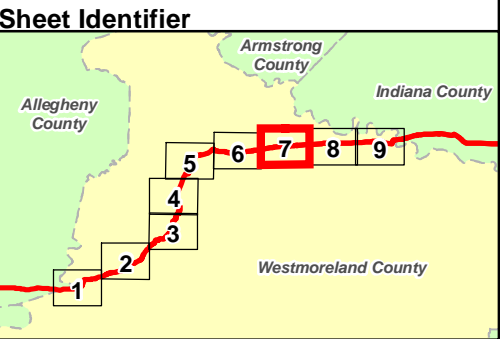


Figure 1. Project Location for the Sunoco Pennsylvania Pipeline Project, Westmoreland County, PA.
Sheet 7 of 9

Prepared By:  **TETRA TECH**

Prepared for:  **Sunoco Logistics**

Base Map: ESRI ArcGIS Online
Coordinate System: NAD 83 UTM 17N

Date:
03/2016



- Legend**
- Proposed Centerline
 - ROW - Permanent Access Road
 - ROW - Temporary Access Road
 - Pump Station LOD
 - County Boundary
 - State Boundary

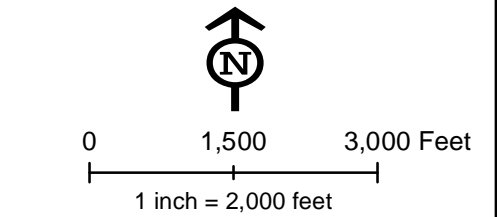
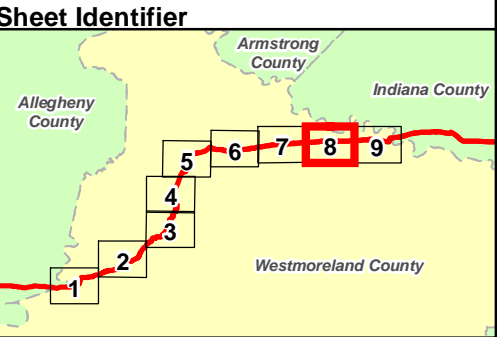
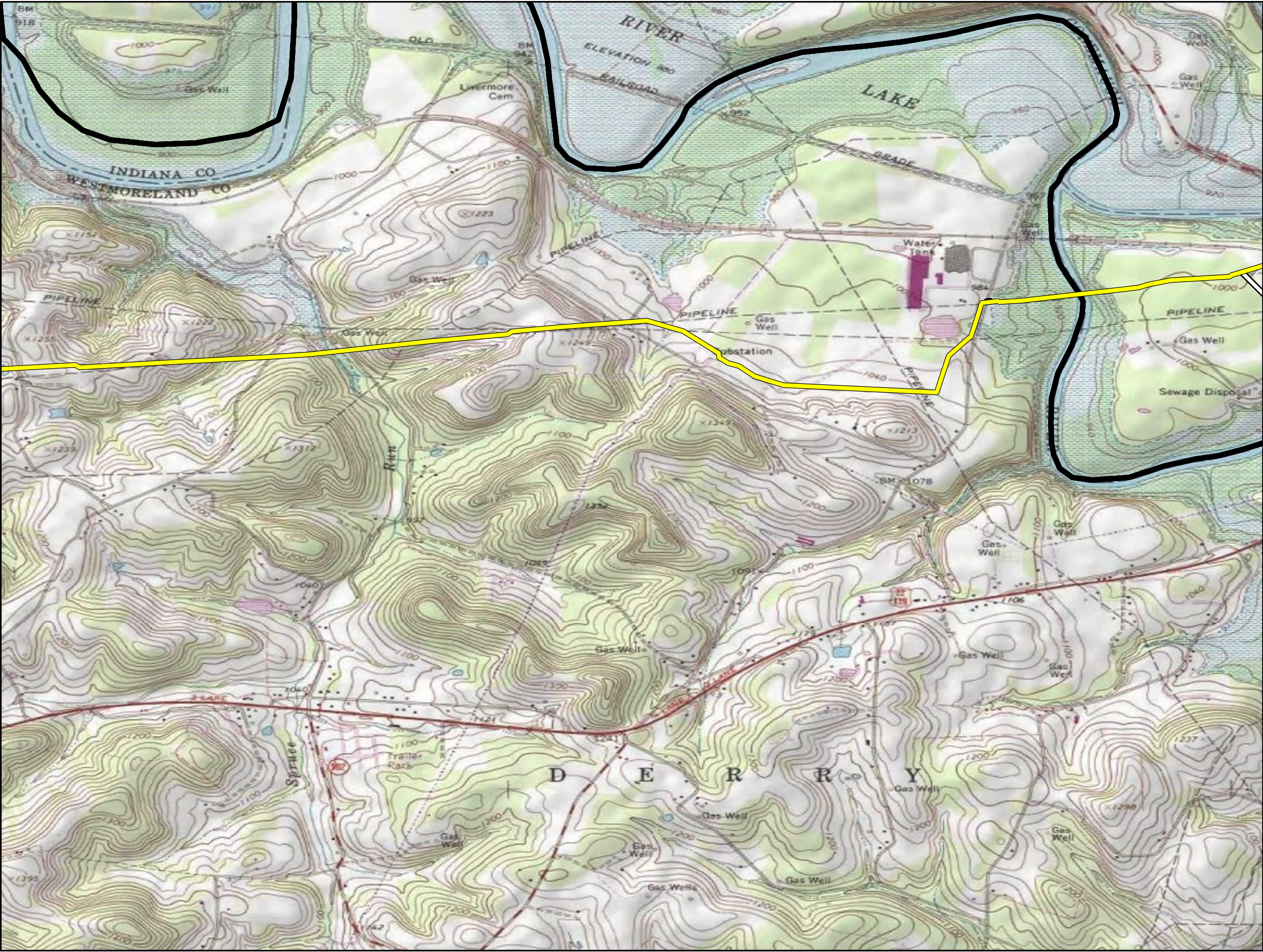


Figure 1. Project Location for the Sunoco Pennsylvania Pipeline Project, Westmoreland County, PA.
Sheet 8 of 9

Prepared By: TETRA TECH

Prepared for: Sunoco Logistics

Base Map: ESRI ArcGIS Online
Coordinate System: NAD 83 UTM 17N
Date: 03/2016



- Legend**
- Proposed Centerline
 - ROW - Permanent Access Road
 - ROW - Temporary Access Road
 - Pump Station LOD
 - County Boundary
 - State Boundary

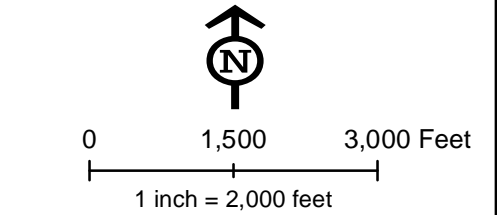
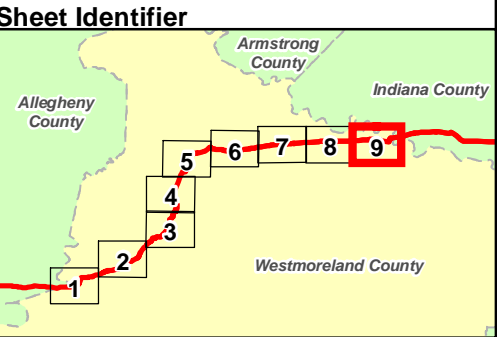


Figure 1. Project Location for the Sunoco Pennsylvania Pipeline Project, Westmoreland County, PA.
Sheet 9 of 9

Prepared By: TETRA TECH

Prepared for: Sunoco Logistics

Base Map: ESRI ArcGIS Online
Coordinate System: NAD 83 UTM 17N
Date: 03/2016