

**ATTACHMENT N**  
**REVISED PAGE 29/54 PHOTO LOCATION MAP**





**PROJECT LOCATION**

COLUMBIANA OH  
WV HANCOCK  
PA BEAVER  
ALLEGHENY

REFERENCE: AERIAL LAYER - ESRI, HERE, GARMIN, © OPENSTREETMAP CONTRIBUTORS  
ESRI, HERE, GARMIN, © OPENSTREETMAP CONTRIBUTORS, AND THE GIS USER COMMUNITY  
SOURCE: ESRI, DIGITALGLOBE, GEOEYE, EARTHSTAR GEOGRAPHICS, CNES/AIRBUS DS, USDA, USGS, AEROGRIID, IGN, AND THE GIS USER COMMUNITY, PUBLIC WATER SUPPLY, PENNSYLVANIA DEPARTMENT OF ENVIRONMENTAL PROTECTION (PADEP), 2017.  
NATIONAL HYDROGRAPHY DATASET (NHD) FLOWLINE AND WATERBODY, UNITED STATES GEOLOGICAL SURVEY (USGS), 2017. NATIONAL WETLAND INVENTORY (NWI) WETLANDS, UNITED STATES FISH AND WILDLIFE SERVICE (USFWS), 2017. FLOODWAYS ARE AN ASSUMED 50' WIDE FROM TOPS OF BANKS. FEDERAL EMERGENCY MANAGEMENT AGENCY (FEMA) 100 YEAR FLOODPLAIN, 2013.  
COORDINATE SYSTEM: NAD 1983 UTM ZONE 17NTRANSVERSE MERCATOR

0 100 200 400 Feet 1 inch = 200 feet

**LEGEND**

# PHOTO LOCATION  
➔ PHOTO DIRECTION  
● CULVERT LOCATION  
○ MILEPOST  
— PROPOSED HOUSTON TO JUNCTION PIPELINE  
— PROPOSED JUNCTION TO MONACA PIPELINE  
— PROPOSED SCIO TO JUNCTION PIPELINE  
— PERMANENT ACCESS ROAD  
— TEMPORARY ACCESS ROAD

INDEX CONTOUR  
INTERMEDIATE CONTOUR  
SURVEYED WATERBODY  
EPHEMERAL  
INTERMITTENT  
PERENNIAL  
DELINEATED WETLAND  
PEM  
PFO  
PSS  
PUB

RESOURCE CROSSING  
50-FOOT FLOODWAY  
LIMIT OF DISTURBANCE  
METER PAD FOOTPRINT  
METER SITE  
MUNICIPAL BOUNDARY  
COUNTY BOUNDARY  
STATE BOUNDARY

SHELL PIPELINE COMPANY LP  
HOUSTON, TX 77079

FOSTER PLAZA 6  
681 ANDERSEN DRIVE  
SUITE 400  
PITTSBURGH, PA 15220  
412-503-4700

**FIGURE 3**

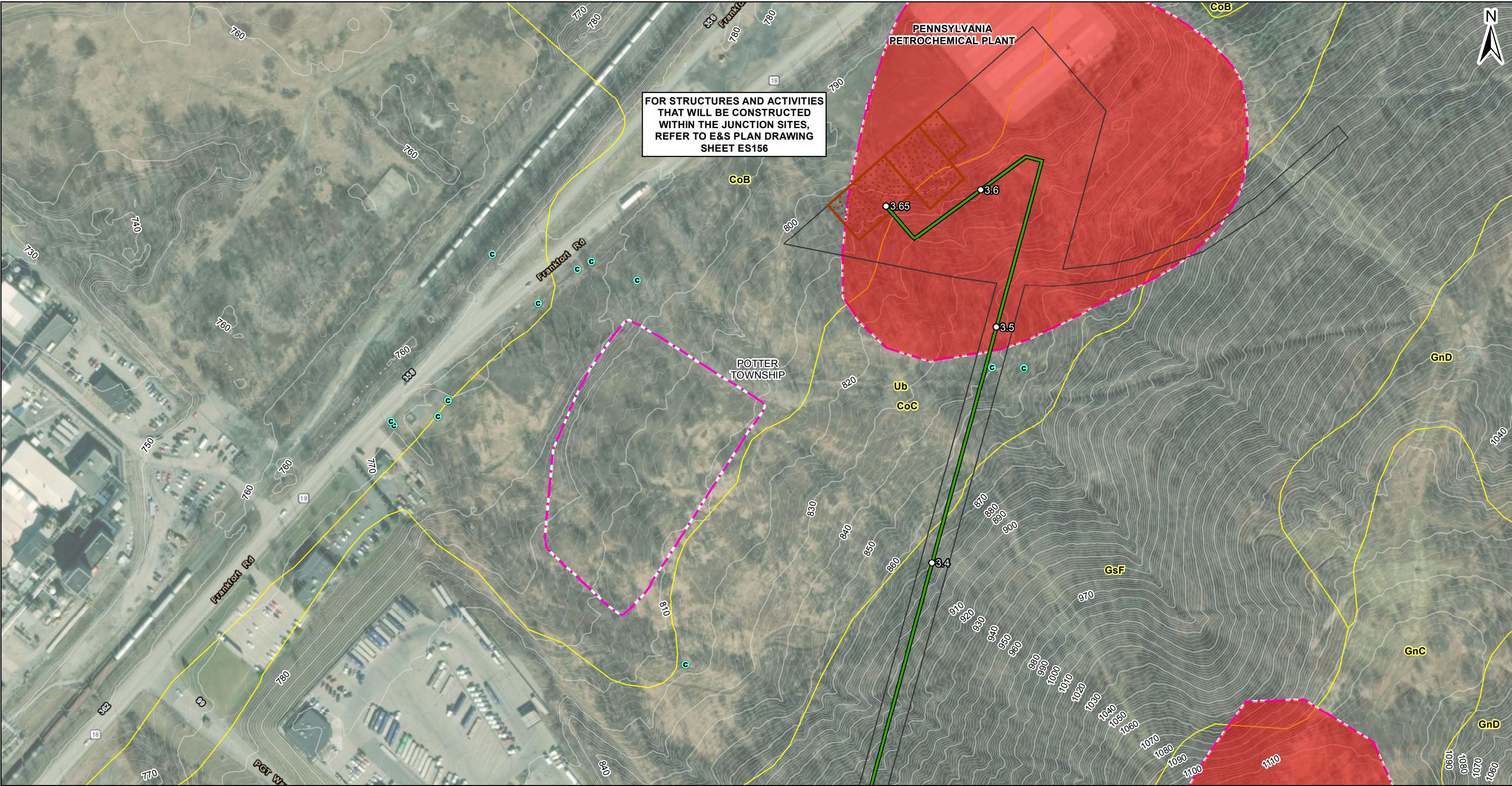
**PHOTO LOCATION MAP**  
PITTSBURGH DISTRICT  
SHEET 29 OF 54  
BEAVER COUNTY,  
PENNSYLVANIA

**SHELL PIPELINE COMPANY LP**  
**FALCON ETHANE**  
**PIPELINE SYSTEM**

DRAWN BY: PMH  
APPROVED: NLS

DATE: 7/3/2018  
PROJECT #60536988





**PROJECT LOCATION**

REFERENCE: AERIAL LAYER - ESRI, HERE, GARMIN, © OPENSTREETMAP CONTRIBUTORS  
ESRI, HERE, GARMIN, © OPENSTREETMAP CONTRIBUTORS, AND THE GIS USER COMMUNITY  
SOURCE: ESRI, DIGITALGLOBE, GEOEYE, EARTHSTAR GEOGRAPHICS, CNES/AIRBUS DS, USDA, USGS, AERGRID, IGN, AND THE GIS USER COMMUNITY. PUBLIC WATER SUPPLY, PENNSYLVANIA DEPARTMENT OF ENVIRONMENTAL PROTECTION (PADEP), 2017.  
NATIONAL HYDROGRAPHY DATASET (NHD) FLOWLINE AND WATERBODY, UNITED STATES GEOLOGICAL SURVEY (USGS), 2017. NATIONAL WETLAND INVENTORY (NWI) WETLANDS, UNITED STATES FISH AND WILDLIFE SERVICE (USFWS), 2017. FLOODWAYS ARE AN ASSUMED 50' WIDE FROM TOPS OF BANKS. FEDERAL EMERGENCY MANAGEMENT AGENCY (FEMA) 100 YEAR FLOODPLAIN, 2013.  
COORDINATE SYSTEM: NAD 1983 UTM ZONE 17NTRANSVERSE MERCATOR

0 100 200 400 Feet 1 inch = 200 feet

**LEGEND**

VALVE

CULVERT LOCATION

MILEPOST

PROPOSED HOUSTON TO JUNCTION PIPELINE

PROPOSED JUNCTION TO MONACA PIPELINE

PROPOSED SCIO TO JUNCTION PIPELINE

PERMANENT ACCESS ROAD

TEMPORARY ACCESS ROAD

NHD FLOWLINE

INDEX CONTOUR

INTERMEDIATE CONTOUR

SURVEYED WATERBODY

EPHEMERAL

INTERMITTENT

PERENNIAL

DELINEATED WETLAND

PEM

PFO

PSS

PUB

NWI WETLAND

NHD WATERBODY

RESOURCE CROSSING

50-FOOT FLOODWAY

FEMA 100-YEAR FLOODPLAIN

SOIL TYPE BOUNDARY

LIMIT OF DISTURBANCE

METER SITE

MUNICIPAL BOUNDARY

COUNTY BOUNDARY

STATE BOUNDARY

**CULTURAL RESOURCES**

ISOLATED FINDS

MODERN RESOURCE

ARCHAEOLOGICAL SITE

ABOVE GROUND RESOURCE

PHMC SITE 1-MILE BUFFER

SHELL PIPELINE COMPANY LP  
HOUSTON, TX 77079

FOSTER PLAZA 6  
681 ANDERSEN DRIVE  
SUITE 400  
PITTSBURGH, PA 15220  
412-503-4700

**FIGURE 2**

**PLAN VIEW MAP**  
**PITTSBURGH DISTRICT**  
**SHEET 29 OF 54**  
BEAVER COUNTY,  
PENNSYLVANIA

**SHELL PIPELINE COMPANY LP**  
**FALCON ETHANE**  
**PIPELINE SYSTEM**

DRAWN BY: PMH  
APPROVED: NLS

DATE: 7/26/2018  
PROJECT #:60536988