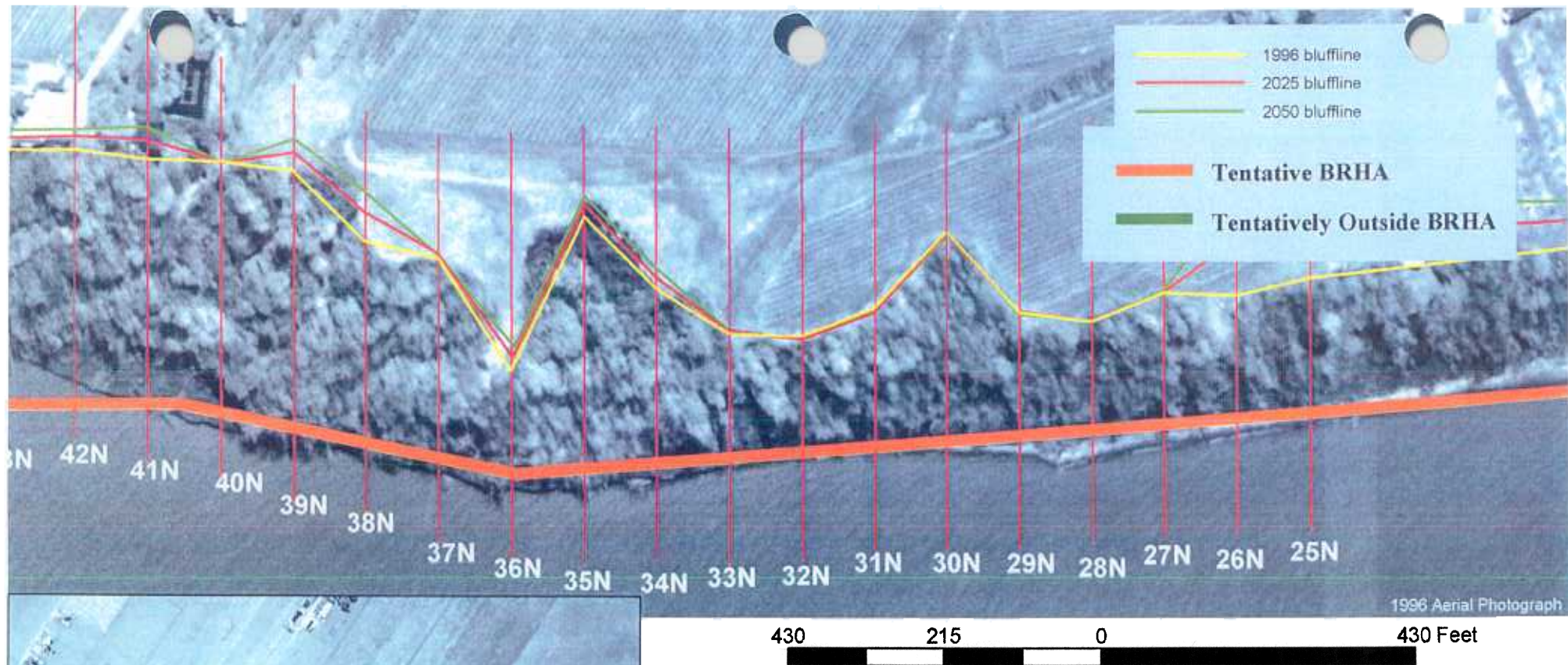


Transect	1	2	3	4	5	6	7
predicted recession by 2025	54.7	49.8		27.5	14.2	29.1	0.0
predicted recession by 2050	96.9	87.9		46.2	21.6	49.2	0.0
recession rate (ft/yr)	1.7	1.5	discard	0.8	0.3	0.8	0.0

Transect	8	9	10	11	12	13	14
predicted recession by 2025	31.3	0.0	45.5	0.0	0.0	122.0	93.7
predicted recession by 2050	53.4	0.0	79.8	0.0	0.0	222.3	169.5
recession rate (ft/yr)	0.9	0.0	1.4	0.0	0.0	4.0	3.0

Transect	15	16	17	18	19	20	21
predicted recession by 2025	0.0	32.4	43.1	20.7		74.7	31.9
predicted recession by 2050	0.0	55.5	75.3	33.6		134.1	54.5
recession rate (ft/yr)	0.0	0.9	1.3	0.5	discard	2.4	0.9

No measurable change in bluff location, but instability and/or signs of bluff recession were observed near transect, therefore this transect is in a Bluff Recession Hazard Area

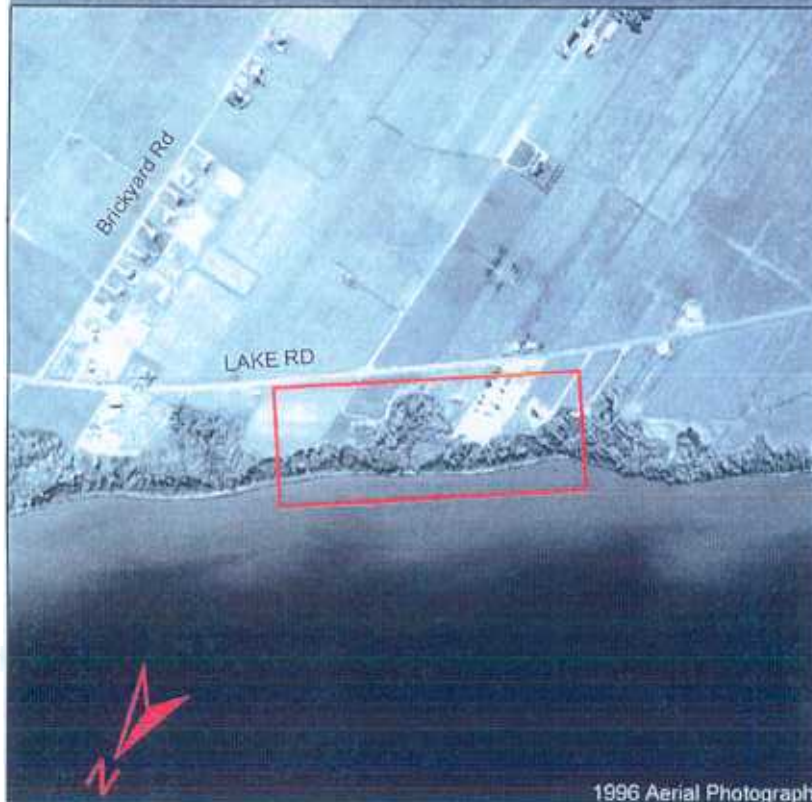
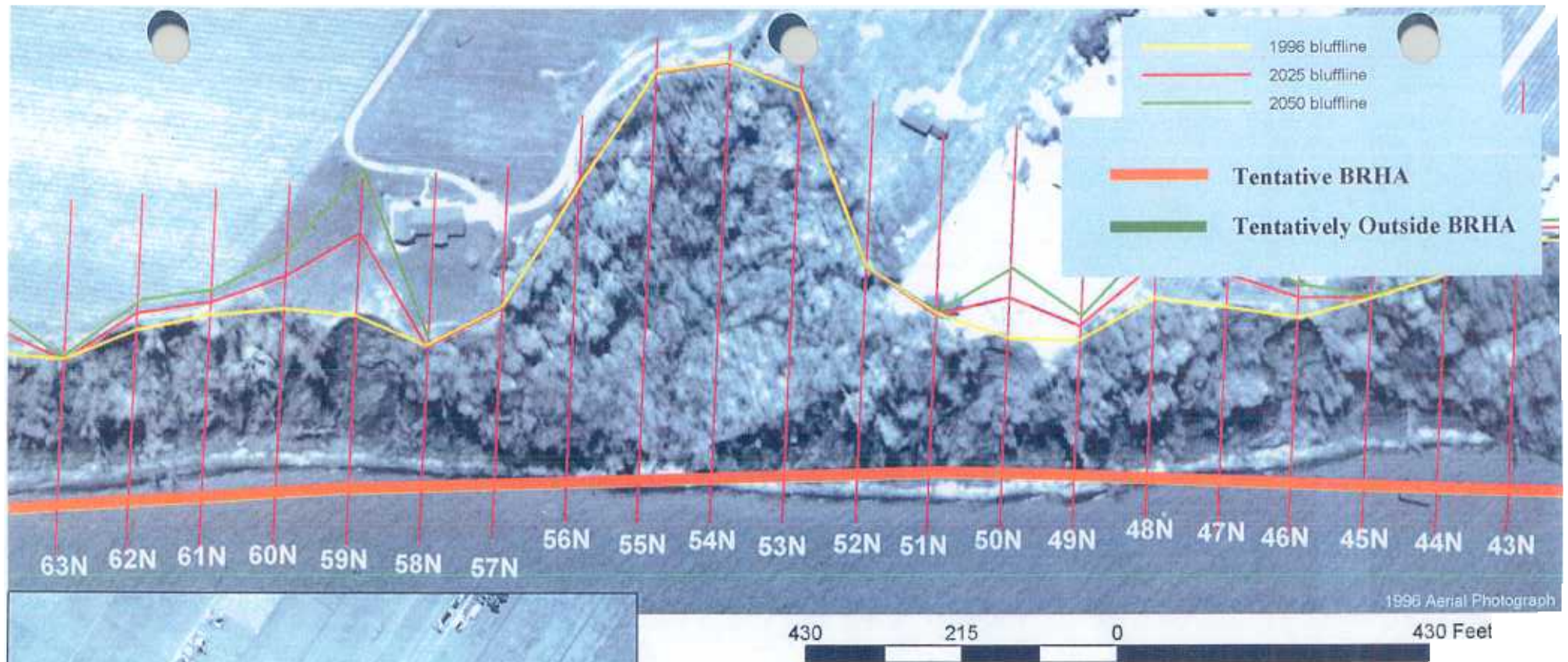


Transect	22	23	24	25	26	27	28
predicted recession by 2025				56.9	78.2	0.0	0.0
predicted recession by 2050				101.1	140.7	0.0	0.0
recession rate (ft/yr)	discard	discard	discard	1.8	2.5	0.0	0.0

Transect	29	30	31	32	33	34	35
predicted recession by 2025	0.0	0.0	0.0	0.0	0.0	17.1	18.2
predicted recession by 2050	0.0	0.0	0.0	0.0	0.0	26.7	28.3
recession rate (ft/yr)	0.0	0.0	0.0	0.0	0.0	0.5	0.5

Transect	36	37	38	39	40	41	42
predicted recession by 2025	21.5	0.0	37.9	25.2	0.0	24.6	17.0
predicted recession by 2050	35.1	0.0	65.7	42.0	0.0	40.8	26.7
recession rate (ft/yr)	0.5	0.0	1.1	0.7	0.0	0.7	0.4

No measurable change in bluff location, but instability and/or signs of bluff recession were observed near transect, therefore this transect is in a Bluff Recession Hazard Area

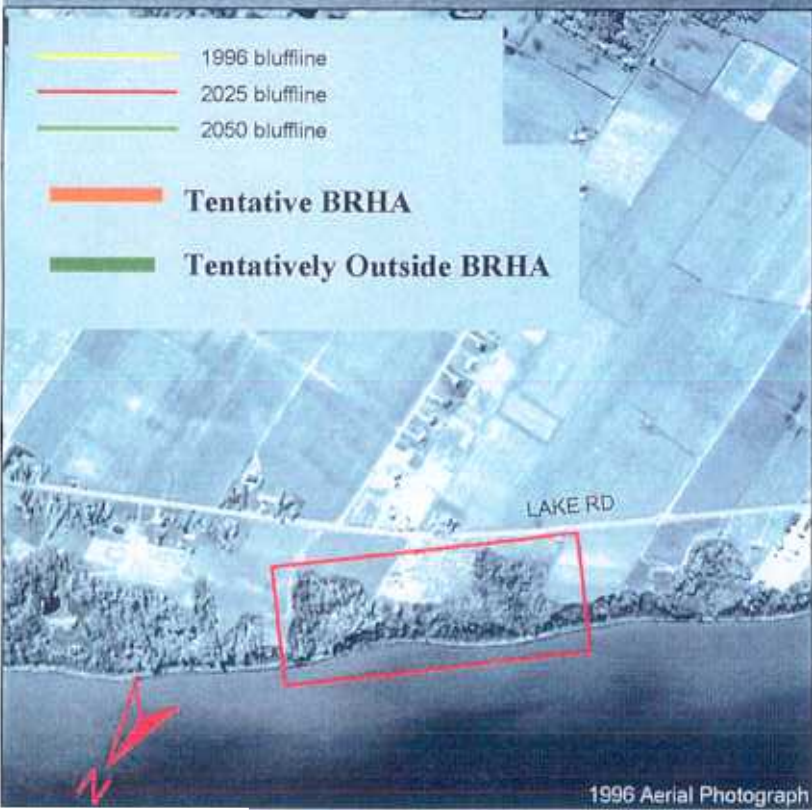
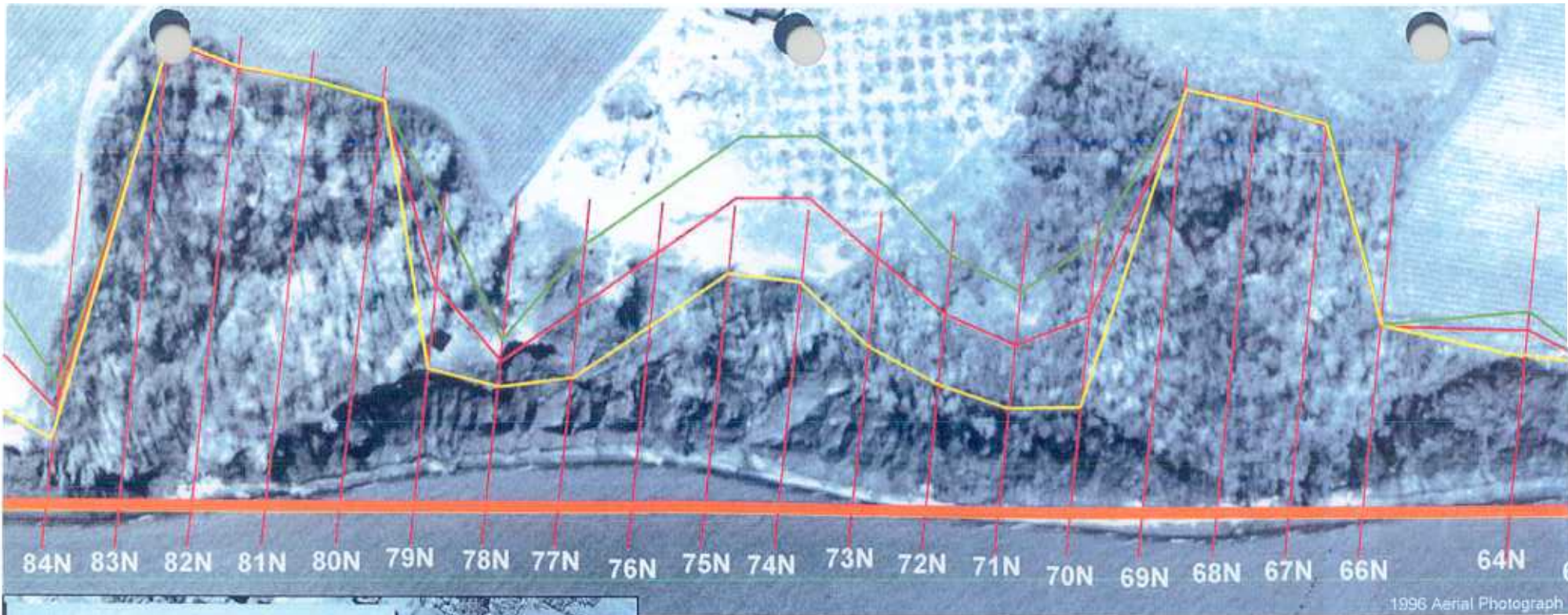


Transect	43	44	45	46	47	48	49
predicted recession by 2025	19.6	0.0	0.0	27.6	44.0	48.2	17.6
predicted recession by 2050	31.5	0.0	0.0	46.5	77.1	84.9	27.9
recession rate (ft/yr)	0.5	0.0	0.0	0.8	1.3	1.5	0.4

Transect	50	51	52	53	54	55	56
predicted recession by 2025	53.6	0.0	0.0	0.0	0.0	0.0	0.0
predicted recession by 2050	94.8	0.0	0.0	0.0	0.0	0.0	0.0
recession rate (ft/yr)	1.7	0.0	0.0	0.0	0.0	0.0	0.0

Transect	57	58	59	60	61	62	63
predicted recession by 2025	0.0	0.0	113.5	43.1	19.4	23.4	0.0
predicted recession by 2050	0.0	0.0	206.4	75.3	31.2	38.7	0.0
recession rate (ft/yr)	0.0	0.0	3.7	1.3	0.5	0.6	0.0

No measurable change in bluff location, but instability and/or signs of bluff recession were observed near transect, therefore this transect is in a Bluff Recession Hazard Area

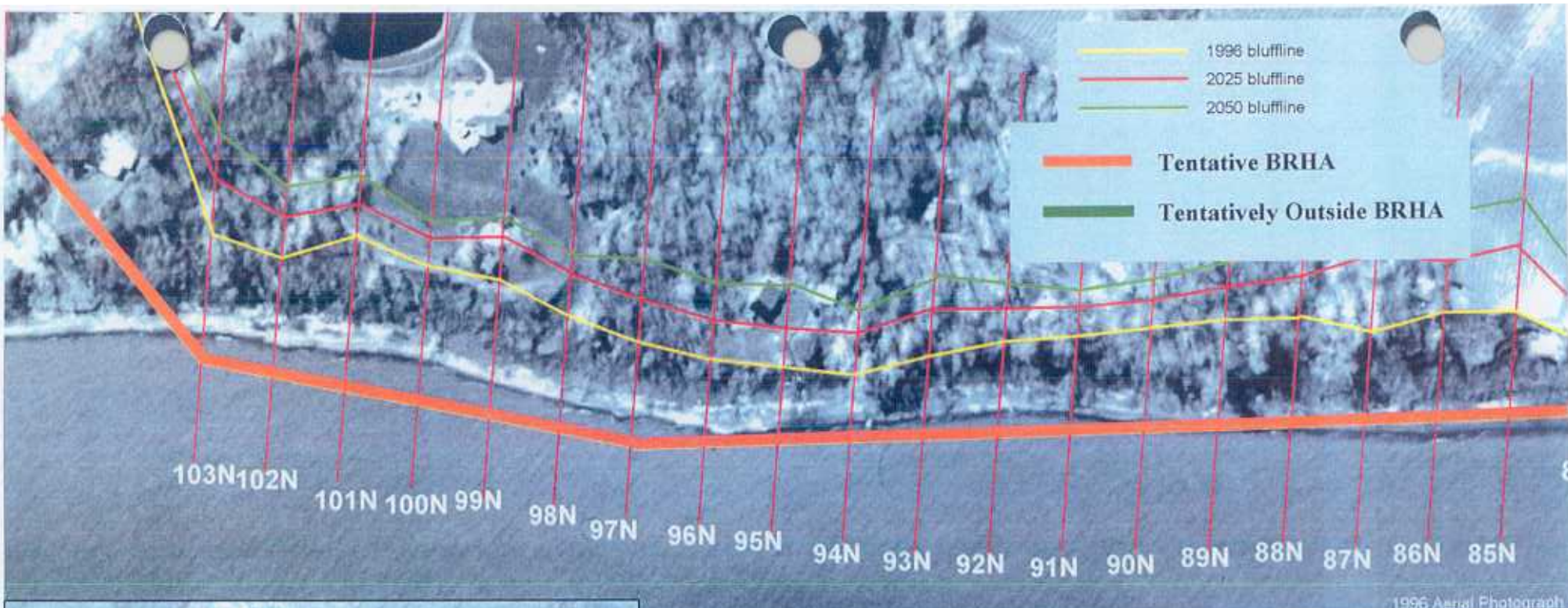


Transect	64	65	66	67	68	69	70
predicted recession by 2025	36.3		0.0	0.0	0.0	0.0	129.0
predicted recession by 2050	62.7		0.0	0.0	0.0	0.0	235.2
recession rate (ft/yr)	1.1	discard	0.0	0.0	0.0	0.0	4.3

Transect	71	72	73	74	75	76	77
predicted recession by 2025	87.9	97.1	120.4	113.6	103.7		98.3
predicted recession by 2050	158.7	175.8	219.3	206.7	188.1		178.2
recession rate (ft/yr)	2.8	3.2	4.0	3.7	3.4	discard	3.2

Transect	78	79	80	81	82	83	84
predicted recession by 2025	34.5	118.5	0.0	0.0	0.0	0.0	39.9
predicted recession by 2050	59.4	215.7	0.0	0.0	0.0	0.0	69.3
recession rate (ft/yr)	1.0	3.9	0.0	0.0	0.0	0.0	1.2

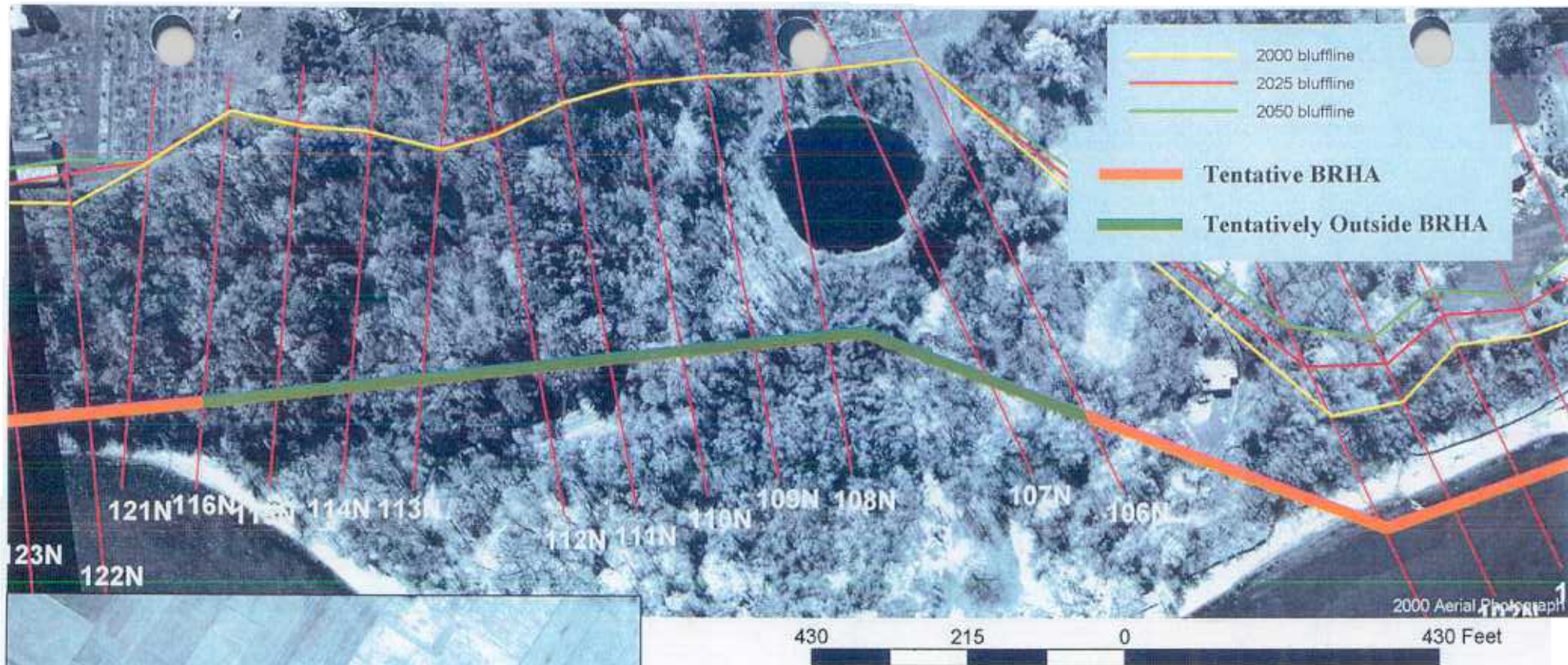
No measurable change in bluff location, but instability and/or signs of bluff recession were observed near transect, therefore this transect is in a Bluff Recession Hazard Area



Transect	85	86	87	88	89	90	91
predicted recession by 2025	88.8	74.0	114.3	52.4	43.8	38.0	38.6
predicted recession by 2050	160.5	132.9	207.9	92.7	76.6	65.8	66.9
recession rate (ft/yr)	2.9	2.4	3.7	1.6	1.3	1.1	1.1

Transect	92	93	94	95	96	97	98
predicted recession by 2025	44.4	62.8	50.7	61.7	57.6	60.5	56.2
predicted recession by 2050	77.8	112.0	89.5	110.0	102.3	114.6	106.1
recession rate (ft/yr)	1.3	2.0	1.6	1.9	1.8	2.2	2.0

Transect	99	100	101	102	103	104	105
predicted recession by 2025	55.9	33.3	46.1	55.0	72.2		
predicted recession by 2050	105.5	60.3	85.8	97.8	135.1		
recession rate (ft/yr)	2.0	1.1	1.6	1.7	2.5	discard	discard

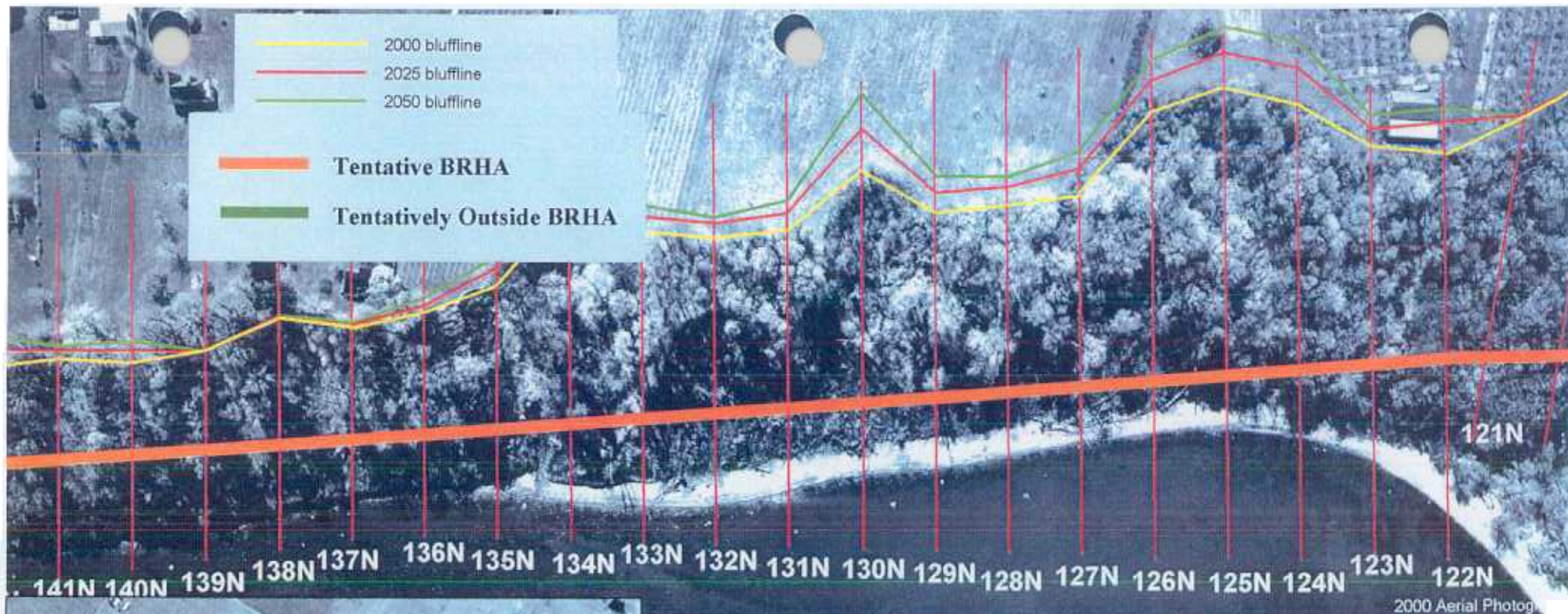


Transect	106	107	108	109	110	111	112
predicted recession by 2025	0.0	0.0	0.0	0.0	0.0	0.0	0.0
predicted recession by 2050	0.0	0.0	0.0	0.0	0.0	0.0	0.0
recession rate (ft/yr)	0.0	0.0	0.0	0.0	0.0	0.0	0.0

Transect	113	114	115	116	117	118	119
predicted recession by 2025	0.0	0.0	0.0	0.0			
predicted recession by 2050	0.0	0.0	0.0	0.0			
recession rate (ft/yr)	0.0	0.0	0.0	0.0	discard	discard	discard

Transect	120
predicted recession by 2025	
predicted recession by 2050	
recession rate (ft/yr)	discard

No measurable change in bluff location, but instability and/or signs of bluff recession were observed near transect, therefore this transect is in a Bluff Recession Hazard Area

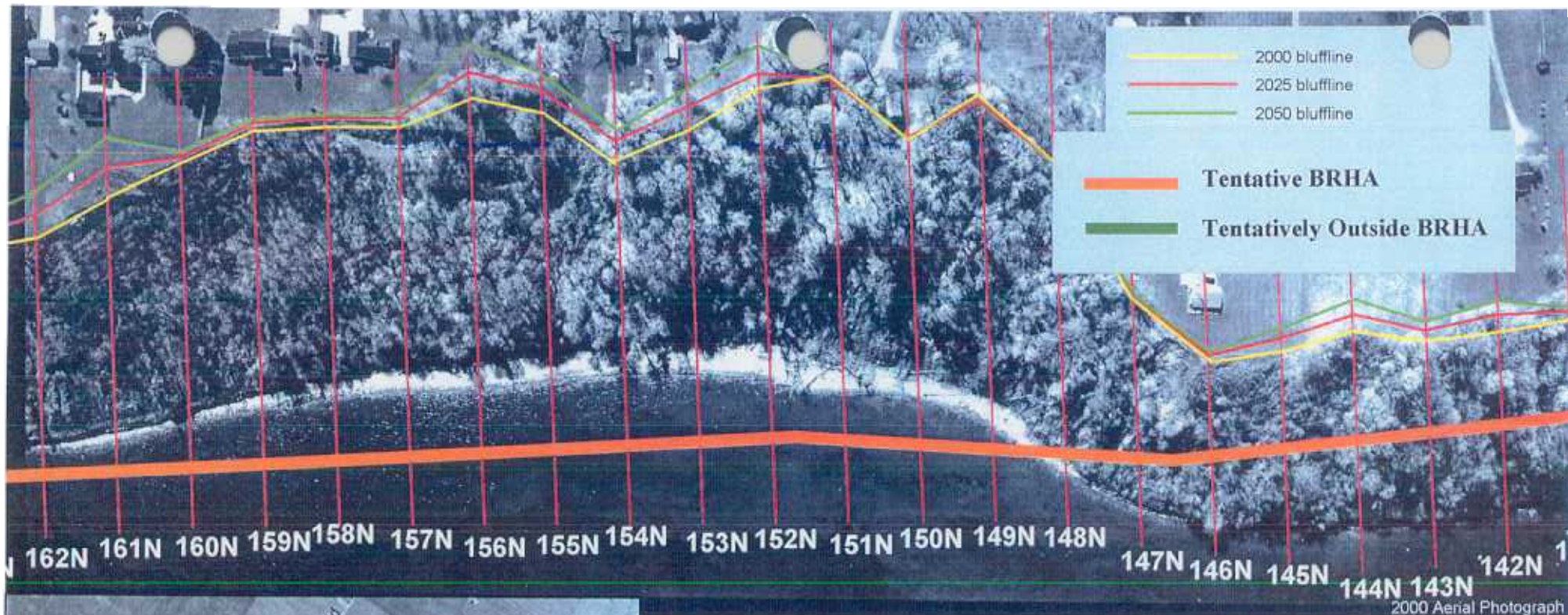


Transect	121	122	123	124	125	126	127
predicted recession by 2025	0.0	29.6	25.8	47.2	45.5	39.5	30.8
predicted recession by 2050	0.0	53.0	45.3	84.4	84.7	72.8	55.3
recession rate (ft/yr)	0.0	0.9	0.8	1.5	1.6	1.3	1.0

Transect	128	129	130	131	132	133	134
predicted recession by 2025	21.4	29.0	55.7	21.4	13.6	19.8	17.7
predicted recession by 2050	36.5	51.7	105.1	36.5	21.0	33.3	29.1
recession rate (ft/yr)	0.6	0.9	2.0	0.6	0.3	0.5	0.5

Transect	135	136	137	138	139	140	141
predicted recession by 2025	23.1	9.3	0.0	0.0	0.0	18.5	7.8
predicted recession by 2050	39.8	19.1	0.0	0.0	0.0	30.7	15.0
recession rate (ft/yr)	0.7	0.5	0.0	0.0	0.0	0.5	0.3

No measurable change in bluff location, but instability and/or signs of bluff recession were observed near transect, therefore this transect is in a Bluff Recession Hazard Area



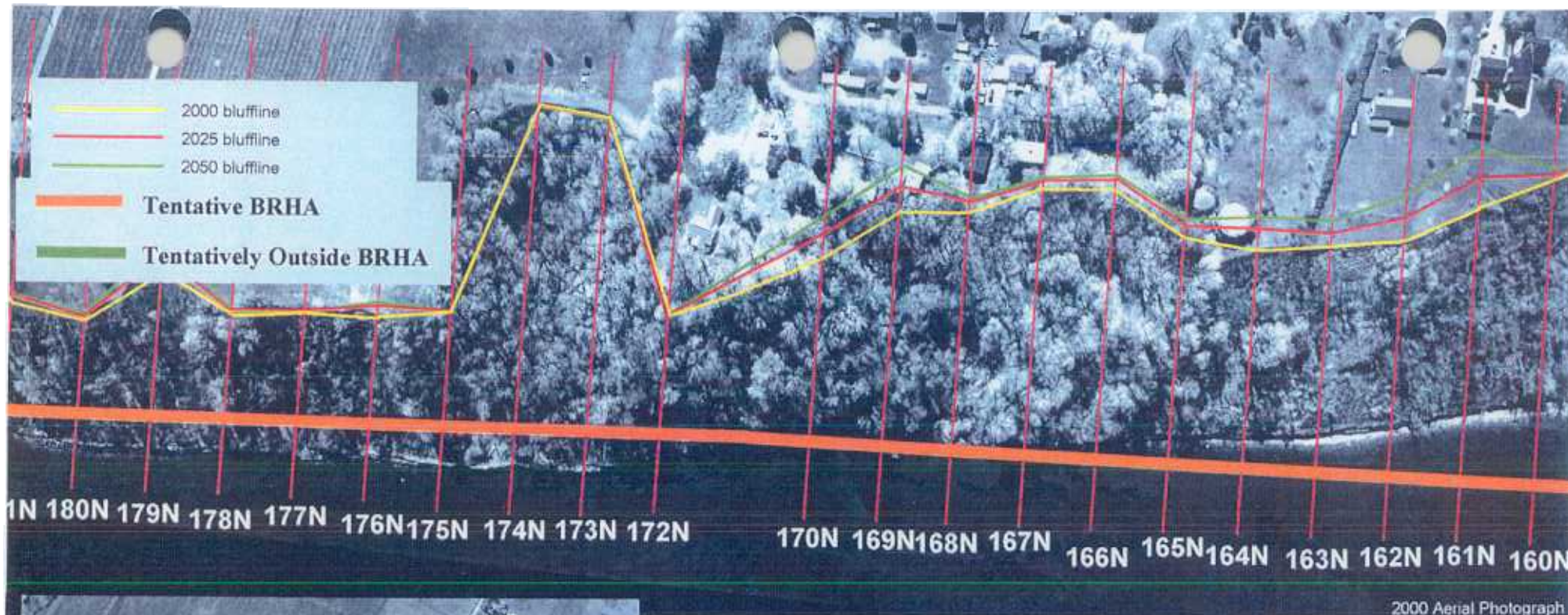
430 215 0 430 Feet

Transect	142	143	144	145	146	147	148
predicted recession by 2025	25.2	11.8	23.1	20.3	9.0	0.0	0.0
predicted recession by 2050	44.0	21.9	39.9	34.3	11.8	0.0	0.0
recession rate (ft/yr)	0.8	0.4	0.7	0.6	0.1	0.0	0.0

Transect	149	150	151	152	153	154	155
predicted recession by 2025	0.0	0.0	0.0	32.7	31.5	23.6	28.1
predicted recession by 2050	0.0	0.0	0.0	59.0	56.7	40.8	49.9
recession rate (ft/yr)	0.0	0.0	0.0	1.1	1.0	0.7	0.9

Transect	156	157	158	159	160	161
predicted recession by 2025	41.1	14.0	10.3	9.7	9.9	42.5
predicted recession by 2050	75.8	21.6	14.3	14.6	14.8	79.7
recession rate (ft/yr)	1.4	0.3	0.2	0.2	0.2	1.5

No measurable change in bluff location, but instability and/or signs of bluff recession were observed near transect, therefore this transect is in a Bluff Recession Hazard Area

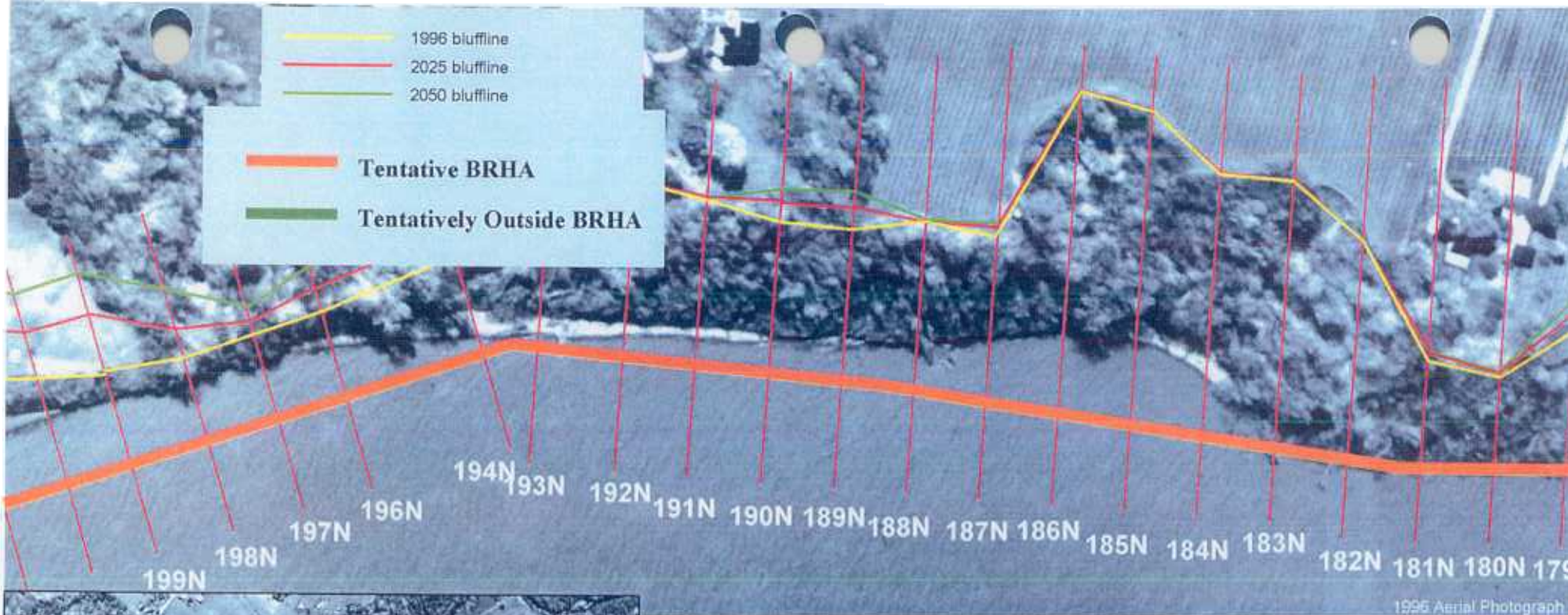


Transect	162	163	164	165	166	167	168
predicted recession by 2025	30.9	19.2	26.6	15.2	12.8	10.1	12.8
predicted recession by 2050	62.1	32.0	46.3	24.0	19.2	13.9	19.3
recession rate (ft/yr)	1.2	0.5	0.8	0.4	0.3	0.2	0.3

Transect	169	170	171	172	173	174	175
predicted recession by 2025	36.3	32.8		0.0	0.0	0.0	0.0
predicted recession by 2050	66.4	59.3		0.0	0.0	0.0	0.0
recession rate (ft/yr)	1.2	1.1	discard	0.0	0.0	0.0	0.0

Transect	176	177	178	179	180
predicted recession by 2025	10.7	0.0	0.0	25.4	8.5
predicted recession by 2050	15.2	0.0	0.0	44.4	12.2
recession rate (ft/yr)	0.2	0.0	0.0	0.8	0.2

No measurable change in bluff location, but instability and/or signs of bluff recession were observed near transect, therefore this transect is in a Bluff Recession Hazard Area

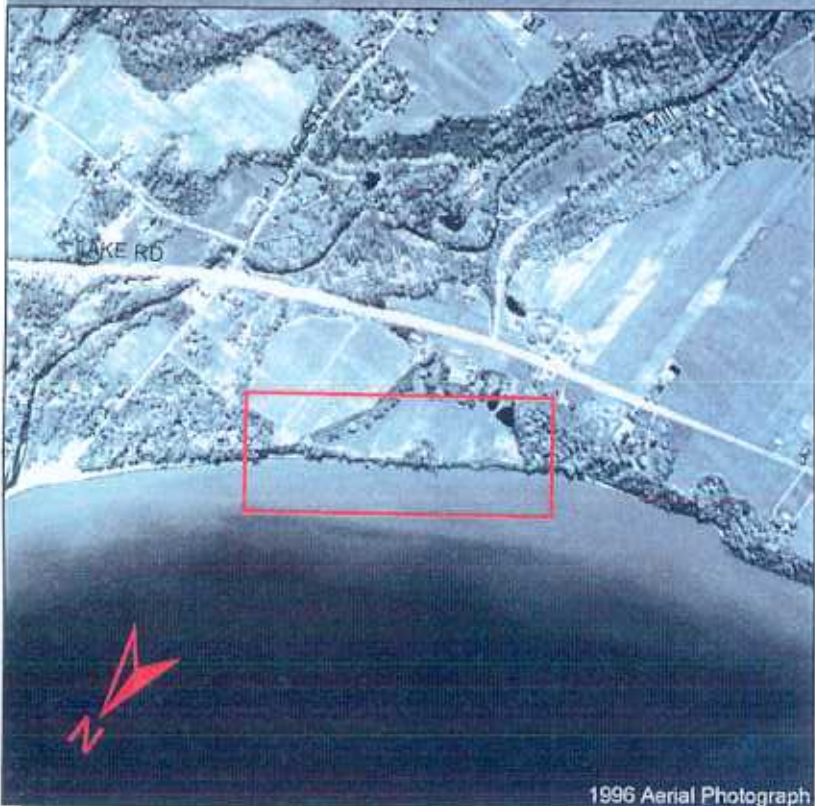
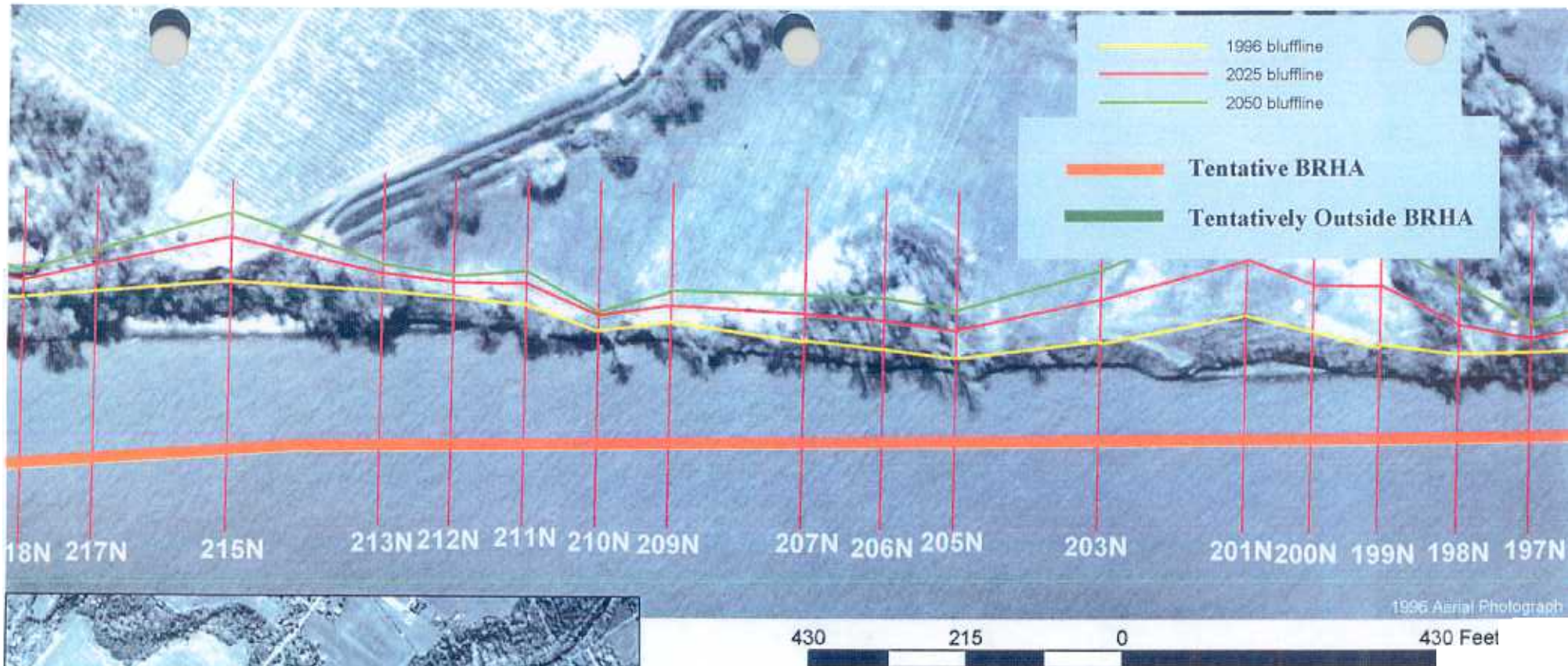


Transect	181	182	183	184	185	186	187
predicted recession by 2025	9.1	0.0	0.0	0.0	0.0	0.0	13.5
predicted recession by 2050	11.9	0.0	0.0	0.0	0.0	0.0	20.7
recession rate (ft/yr)	0.1	0.0	0.0	0.0	0.0	0.0	0.3

Transect	188	189	190	191	192	193	194
predicted recession by 2025	0.0	30.2	25.2	0.0	0.0	0.0	31.2
predicted recession by 2050	0.0	54.1	44.0	0.0	0.0	0.0	56.0
recession rate (ft/yr)	0.0	1.0	0.8	0.0	0.0	0.0	1.0

Transect	195	196	197	198	199
predicted recession by 2025		34.8	20.2	65.6	80.1
predicted recession by 2050		63.2	34.1	124.9	137.5
recession rate (ft/yr)	discard	1.1	0.6	2.4	2.3

No measurable change in bluff location, but instability and/or signs of bluff recession were observed near transect, therefore this transect is in a Bluff Recession Hazard Area



Transect	200	201	202	203	204	205	206
predicted recession by 2025	61.2	74.9		55.7		35.4	37.8
predicted recession by 2050	116.2	143.5		97.0		64.4	69.3
recession rate (ft/yr)	2.2	2.7	discard	1.7	discard	1.2	1.3

Transect	207	208	209	210	211	212	213
predicted recession by 2025	35.2		27.3	16.6	23.5	18.5	20.8
predicted recession by 2050	64.1		48.3	27.0	40.7	30.8	35.4
recession rate (ft/yr)	1.2	discard	0.8	0.4	0.7	0.5	0.6

Transect	214	215	216	217
predicted recession by 2025		46.7		27.6
predicted recession by 2050		79.6		48.9
recession rate (ft/yr)	discard	1.3	discard	0.9



Transect	218	219	220	221	222	223	224
predicted recession by 2025	19.7	40.4		29.6	25.7	37.9	30.3
predicted recession by 2050	33.1	68.6		53.0	45.0	64.7	50.8
recession rate (ft/yr)	0.5	1.1	discard	0.9	0.8	1.1	0.8

Transect	225	226	227	228	229	230	231
predicted recession by 2025	38.2		17.5	0.0			
predicted recession by 2050	70.1		28.6	0.0			
recession rate (ft/yr)	1.3	discard	0.4	0.0	discard	discard	discard

Transect	232	233	234	235	236	237
predicted recession by 2025						
predicted recession by 2050						
recession rate (ft/yr)	discard	discard	discard	discard	discard	discard

No measurable change in bluff location, but instability and/or signs of bluff recession were observed near transect, therefore this transect is in a Bluff Recession Hazard Area

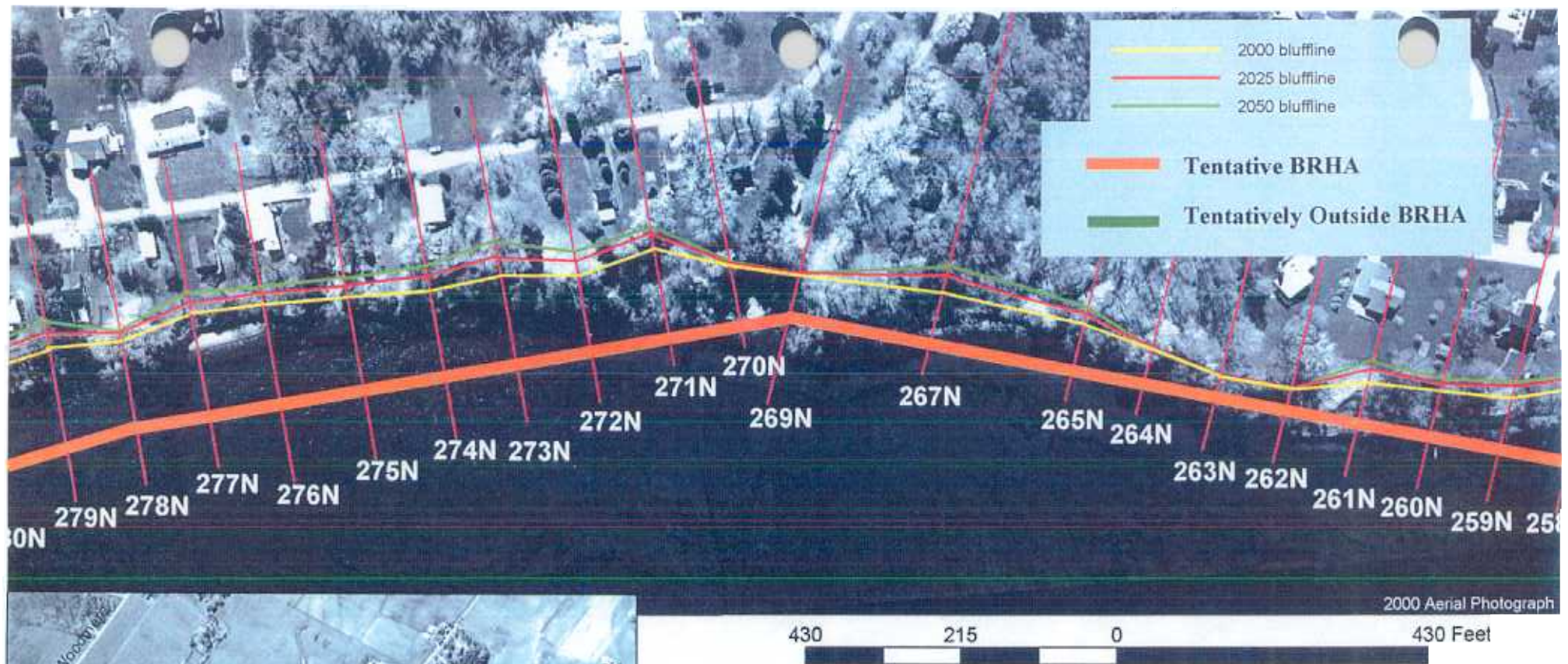


Transect	238	239	240	241	242	243	244
predicted recession by 2025							
predicted recession by 2050							
recession rate (ft/yr)	discard	discard	discard	discard	discard	discard	discard

Transect	245	246	247	248	249	250	251
predicted recession by 2025					0.0	0.0	0.0
predicted recession by 2050					0.0	0.0	0.0
recession rate (ft/yr)	discard	discard	discard	discard	0.0	0.0	0.0

Transect	252	253	254	255	256	257	258
predicted recession by 2025	0.0	15.7	18.6	14.6	0.0	9.0	11.6
predicted recession by 2050	0.0	25.1	31.7	22.8	0.0	11.8	17.7
recession rate (ft/yr)	0.0	0.4	0.5	0.3	0.0	0.1	0.2

No measurable change in bluff location, but instability and/or signs of bluff recession were observed near transect, therefore this transect is in a Bluff Recession Hazard Area



Transect	259	260	261	262	263	264	265
predicted recession by 2025	13.0	10.5	17.6	0.0	0.0	0.0	14.8
predicted recession by 2050	19.7	17.5	28.5	0.0	0.0	0.0	23.3
recession rate (ft/yr)	0.3	0.3	0.4	0.0	0.0	0.0	0.3

Transect	266	267	268	269	270	271	272
predicted recession by 2025		21.5		0.0	0.0	20.5	19.8
predicted recession by 2050		36.6		0.0	0.0	34.8	33.3
recession rate (ft/yr)	discard	0.6	discard	0.0	0.0	0.6	0.5

Transect	273	274	275	276	277	278	279
predicted recession by 2025	27.6	19.3	17.1	15.3	17.8	11.3	22.2
predicted recession by 2050	48.9	32.4	27.8	24.3	29.3	16.2	38.1
recession rate (ft/yr)	0.9	0.5	0.4	0.4	0.5	0.2	0.6

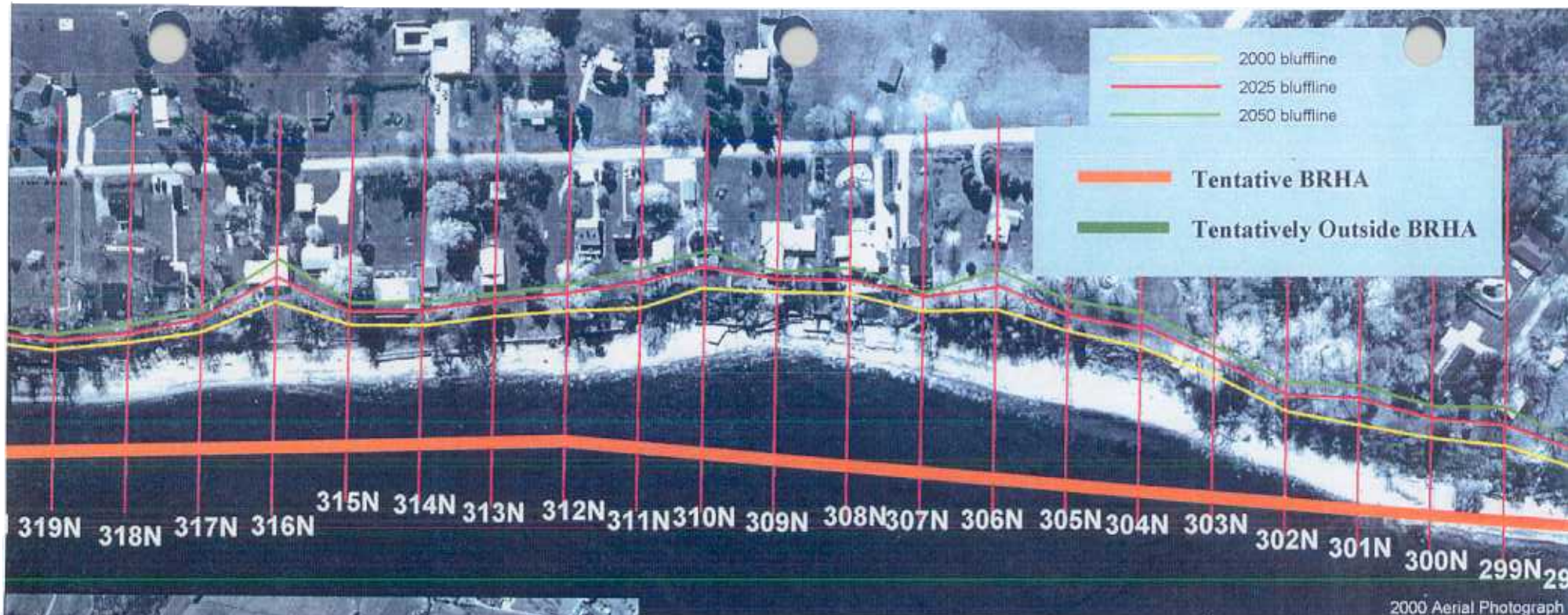
No measurable change in bluff location, but instability and/or signs of bluff recession were observed near transect, therefore this transect is in a Bluff Recession Hazard Area



Transect	280	281	282	283	284	285	286
predicted recession by 2025	21.0	24.6	36.3	38.7	25.1	37.6	
predicted recession by 2050	35.7	43.0	66.4	71.1	43.9	68.8	
recession rate (ft/yr)	0.6	0.7	1.2	1.3	0.8	1.3	discard

Transect	287	288	289	290	291	292	293
predicted recession by 2025	24.1	26.0	29.4		11.5		
predicted recession by 2050	41.0	45.7	52.6		16.6		
recession rate (ft/yr)	0.7	0.8	0.9	discard	0.2	discard	discard

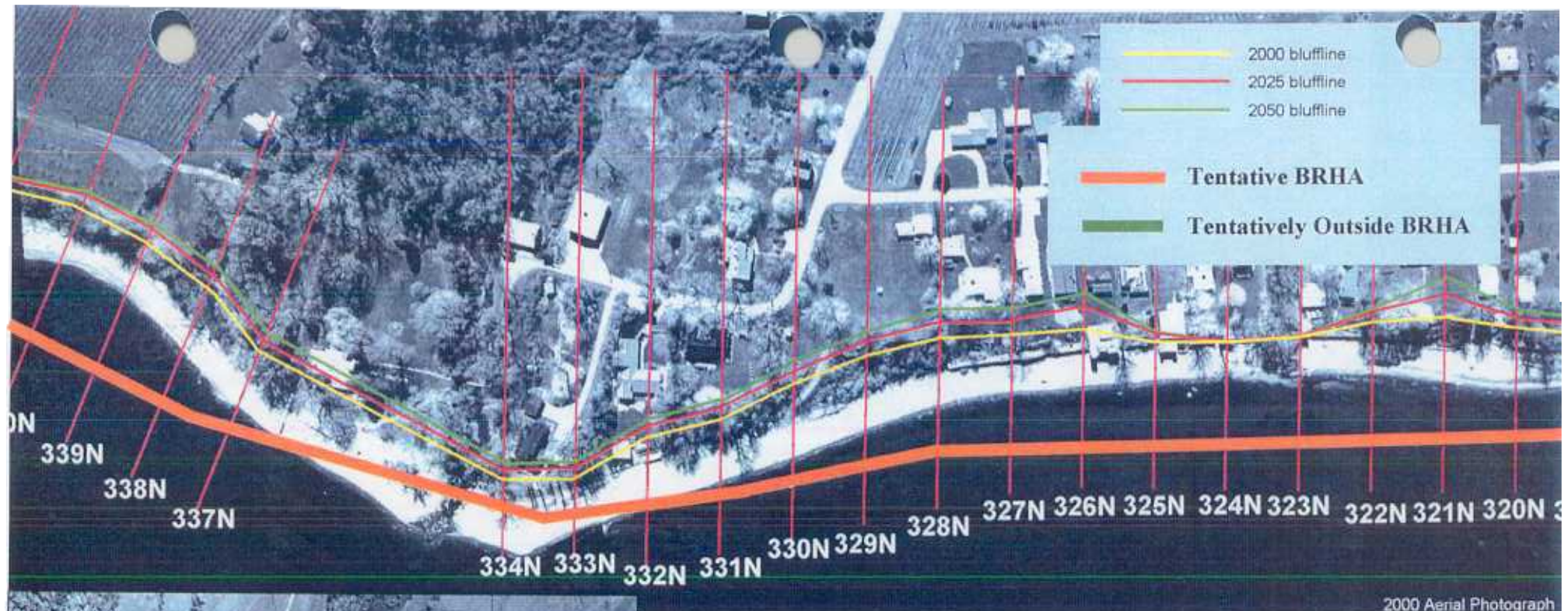
Transect	294	295	296	297	298	299
predicted recession by 2025		18.8	13.3	21.7	18.8	26.6
predicted recession by 2050		31.3	26.5	39.3	29.3	51.2
recession rate (ft/yr)	discard	0.5	0.5	0.7	0.4	1.0



Transect	300	301	302	303	304	305	306
predicted recession by 2025	25.7	28.7	23.4	27.0	27.4	24.3	29.0
predicted recession by 2050	45.1	50.8	39.5	44.0	48.6	42.3	51.7
recession rate (ft/yr)	0.8	0.9	0.6	0.7	0.8	0.7	0.9

Transect	307	308	309	310	311	312	313
predicted recession by 2025	14.6	20.6	18.6	27.8	26.8	20.8	17.6
predicted recession by 2050	22.9	34.8	30.8	49.4	46.9	35.3	29.0
recession rate (ft/yr)	0.3	0.6	0.5	0.9	0.8	0.6	0.5

Transect	314	315	316	317	318	319
predicted recession by 2025	17.5	18.6	31.6	18.0	14.9	12.9
predicted recession by 2050	28.6	30.8	57.0	29.7	24.2	20.4
recession rate (ft/yr)	0.4	0.5	1.0	0.5	0.4	0.3

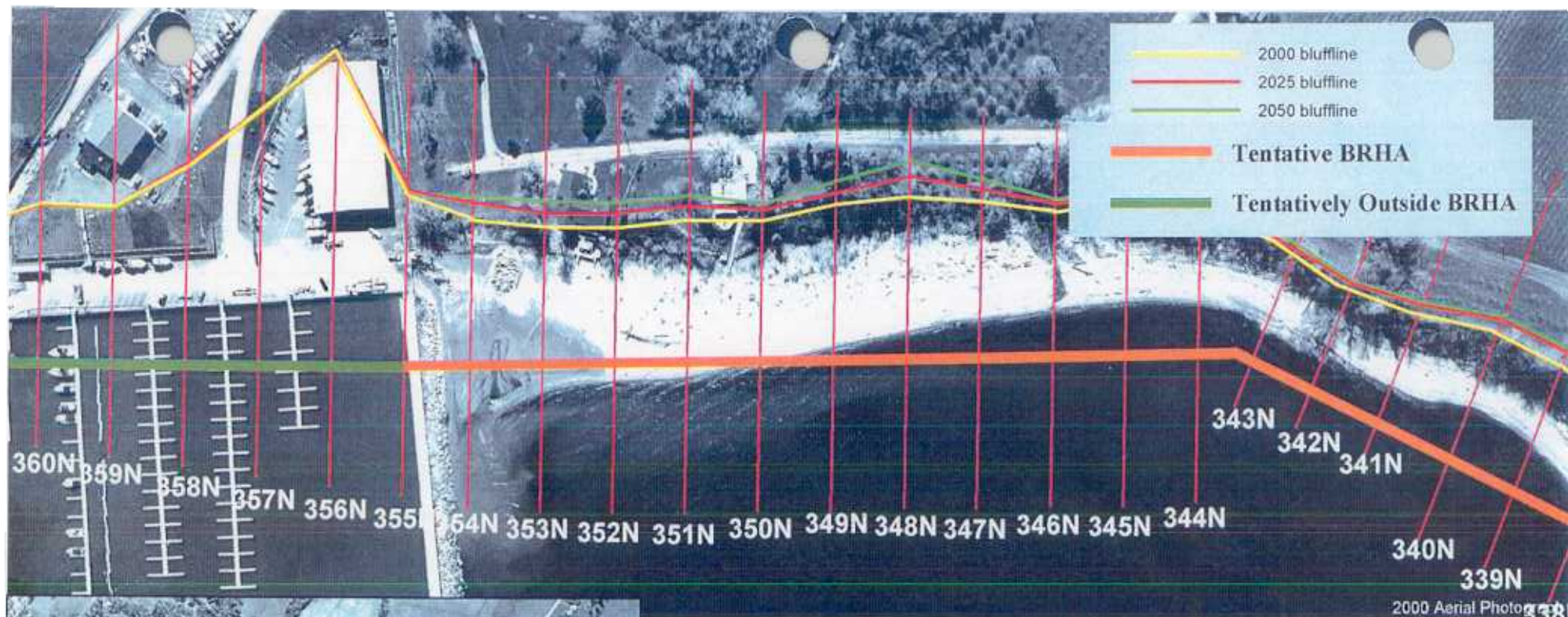


Transect	320	321	322	323	324	325	326
predicted recession by 2025	16.6	30.2	12.5	0.0	0.0	10.5	28.2
predicted recession by 2050	26.0	56.4	18.7	0.0	0.0	14.8	49.0
recession rate (ft/yr)	0.4	1.0	0.2	0.0	0.0	0.2	0.8

Transect	327	328	329	330	331	332	333
predicted recession by 2025	21.1	21.9	19.9	18.1	17.7	19.7	15.0
predicted recession by 2050	37.2	37.4	33.5	29.8	29.0	33.2	23.6
recession rate (ft/yr)	0.6	0.6	0.5	0.5	0.5	0.5	0.3

Transect	334	335	336	337	338	339
predicted recession by 2025	16.8			16.3	21.5	17.0
predicted recession by 2050	27.3			26.2	36.6	29.6
recession rate (ft/yr)	0.4	discard	discard	0.4	0.6	0.5

No measurable change in bluff location, but instability and/or signs of bluff recession were observed near transect, therefore this transect is in a Bluff Recession Hazard Area



Transect	340	341	342	343	344	345	346
predicted recession by 2025	10.8	10.0	12.0	11.6	12.1	12.0	11.5
predicted recession by 2050	17.2	13.7	17.7	17.6	19.3	18.8	16.8
recession rate (ft/yr)	0.3	0.1	0.2	0.2	0.3	0.3	0.2

Transect	347	348	349	350	351	352	353
predicted recession by 2025	17.9	28.9	17.5	14.0	18.5	20.6	23.1
predicted recession by 2050	29.6	50.7	33.0	21.7	31.5	35.0	40.0
recession rate (ft/yr)	0.5	0.9	0.6	0.3	0.5	0.6	0.7

Transect	354	355	356	357	358	359
predicted recession by 2025	24.8	0.0	0.0	0.0	0.0	0.0
predicted recession by 2050	43.3	0.0	0.0	0.0	0.0	0.0
recession rate (ft/yr)	0.7	0.0	0.0	0.0	0.0	0.0

No measurable change in bluff location, but instability and/or signs of bluff recession were observed near transect, therefore this transect is in a Bluff Recession Hazard Area

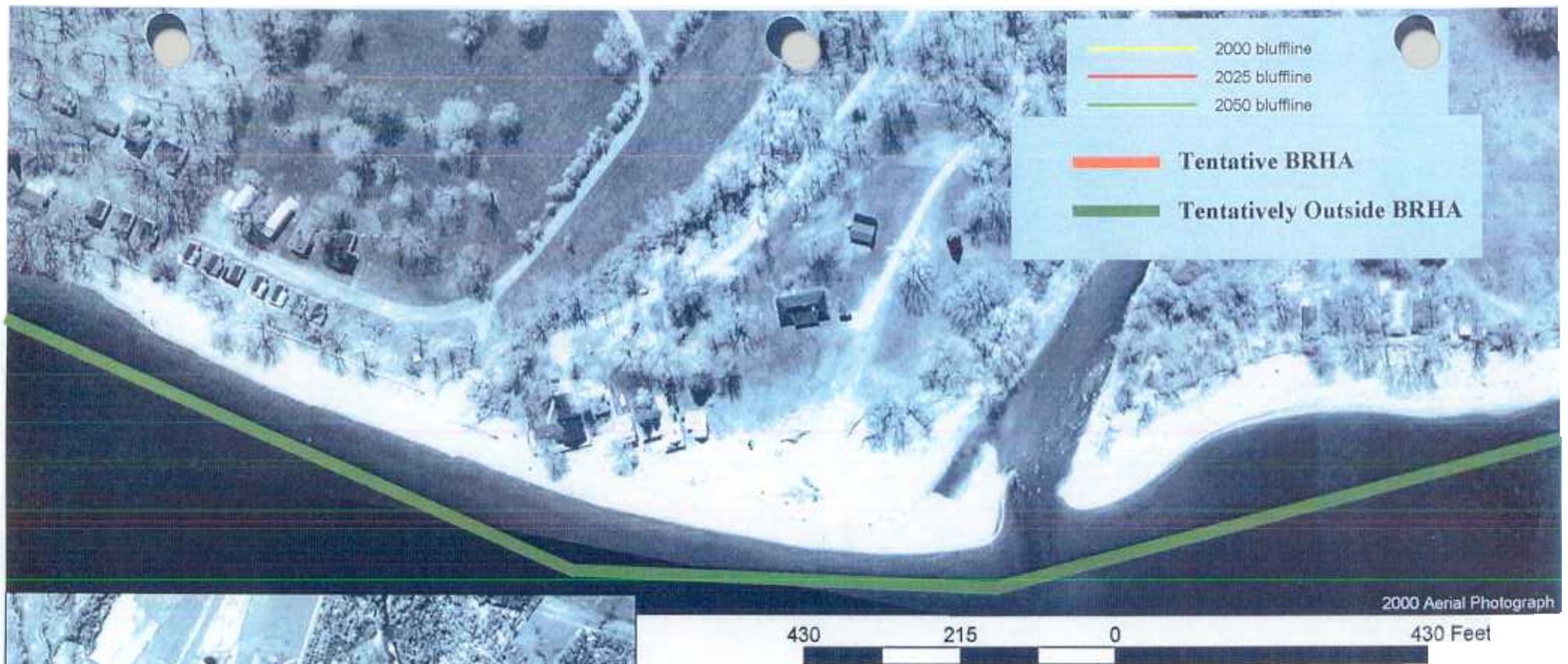


Transect	360	361	362	363	364	365	366
predicted recession by 2025	0.0	0.0	0.0	16.3	16.7	23.7	26.5
predicted recession by 2050	0.0	0.0	0.0	26.2	27.1	42.6	49.1
recession rate (ft/yr)	0.0	0.0	0.0	0.4	0.4	0.8	0.9

Transect	367	368	369	370	371	372	373
predicted recession by 2025	19.4	23.3	24.7	18.7	0.0	10.3	12.1
predicted recession by 2050	34.5	43.1	44.7	35.6	0.0	14.4	18.0
recession rate (ft/yr)	0.6	0.8	0.8	0.7	0.0	0.2	0.2

Transect	374	375	376	377	378	379	380
predicted recession by 2025	0.0	0.0	0.0	0.0	0.0	0.0	0.0
predicted recession by 2050	0.0	0.0	0.0	0.0	0.0	0.0	0.0
recession rate (ft/yr)	0.0	0.0	0.0	0.0	0.0	0.0	0.0

No measurable change in bluff location, but instability and/or signs of bluff recession were observed near transect, therefore this transect is in a Bluff Recession Hazard Area



Transect	381	382	383	384	385	386	387
predicted recession by 2025							
predicted recession by 2050							
recession rate (ft/yr)	discard	discard	discard	discard	discard	discard	discard

Transect	388	389	390	391	392	393	394
predicted recession by 2025							
predicted recession by 2050							
recession rate (ft/yr)	discard	discard	discard	discard	discard	discard	discard

Transect	395	396	397	398	399	400	401
predicted recession by 2025							
predicted recession by 2050							
recession rate (ft/yr)	discard	discard	discard	discard	discard	discard	discard

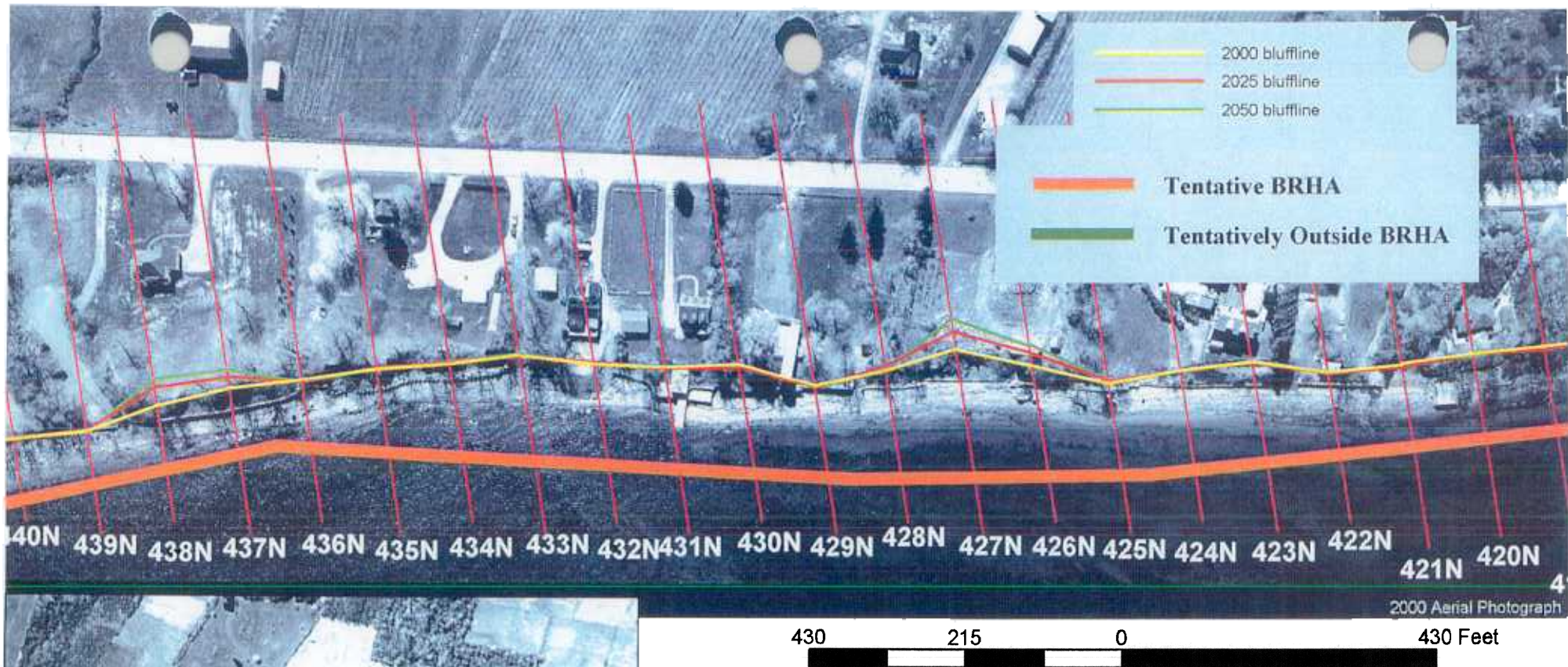


Transect	402	403	404	405	406	407	408
predicted recession by 2025							
predicted recession by 2050							
recession rate (ft/yr)	discard	discard	discard	discard	discard	discard	discard

Transect	409	410	411	412	413	413b	413c
predicted recession by 2025	0.0	0.0	0.0	0.0	0.0	0.0	0.0
predicted recession by 2050	0.0	0.0	0.0	0.0	0.0	0.0	0.0
recession rate (ft/yr)	0.0	0.0	0.0	0.0	0.0	0.0	0.0

Transect	413d	414	415	416	417	418	419
predicted recession by 2025	0.0	0.0	0.0	0.0	0.0	0.0	0.0
predicted recession by 2050	0.0	0.0	0.0	0.0	0.0	0.0	0.0
recession rate (ft/yr)	0.0	0.0	0.0	0.0	0.0	0.0	0.0

No measurable change in bluff location, but instability and/or signs of bluff recession were observed near transect, therefore this transect is in a Bluff Recession Hazard Area



Transect	420	421	422	423	424	425	426
predicted recession by 2025	0.0	0.0	0.0	0.0	0.0	0.0	16.0
predicted recession by 2050	0.0	0.0	0.0	0.0	0.0	0.0	25.7
recession rate (ft/yr)	0.0	0.0	0.0	0.0	0.0	0.0	0.4

Transect	427	428	429	430	431	432	433
predicted recession by 2025	25.5	9.2	0.0	0.0	0.0	0.0	0.0
predicted recession by 2050	44.7	12.1	0.0	0.0	0.0	0.0	0.0
recession rate (ft/yr)	0.8	0.1	0.0	0.0	0.0	0.0	0.0

Transect	434	435	436	437	438	439
predicted recession by 2025	0.0	0.0	0.0	16.0	21.1	0.0
predicted recession by 2050	0.0	0.0	0.0	26.4	35.8	0.0
recession rate (ft/yr)	0.0	0.0	0.0	0.4	0.6	0.0

No measurable change in bluff location, but instability and/or signs of bluff recession were observed near transect, therefore this transect is in a Bluff Recession Hazard Area



Transect	440	441	442	443	444	445	446
predicted recession by 2025	0.0	15.7	10.6	11.4	31.7	22.6	16.1
predicted recession by 2050	0.0	25.0	14.8	16.5	57.2	38.9	25.9
recession rate (ft/yr)	0.0	0.4	0.2	0.2	1.0	0.7	0.4

Transect	447	448	449	450
predicted recession by 2025	12.8	0.0	15.1	0.0
predicted recession by 2050	19.3	0.0	24.0	0.0
recession rate (ft/yr)	0.3	0.0	0.4	0.0

No measurable change in bluff location, but instability and/or signs of bluff recession were observed near transect, therefore this transect is in a Bluff Recession Hazard Area