

# 2026 Annual Monitoring Network Plan

Bureau of Air Quality  
May 2026





# Agenda

- Why an Annual Monitoring Network Plan?
- Proposed 2026 Annual Monitoring Network Plan
  - 2025 Changes to the Monitoring Network
  - 2026 Proposed Changes to the Monitoring Network
- Next Steps



Pennsylvania  
Department of  
Environmental Protection

# Why an Annual Monitoring Network Plan?



# Why an Annual Monitoring Network Plan?

- Title 40 Part 58 of the Code of Federal Regulations (Specifically Section 58.10) requires:  
*the State, or where applicable local, agency shall adopt and submit to the Regional Administrator an annual monitoring network plan which shall provide for the establishment and maintenance of an air quality surveillance system that consists of a network of SLAMS monitoring stations including FRM, FEM, and ARM monitors that are part of SLAMS, NCore stations, STN stations, State speciation stations, SPM stations, and/or, in serious, severe and extreme ozone nonattainment areas, PAMS stations, and SPM monitoring stations. The plan shall include a statement of purposes for each monitor and evidence that siting and operation of each monitor meets the requirements of appendices A, C, D, and E of this part, where applicable. The annual monitoring network plan must be made available for public inspection for at least 30 days prior to submission to EPA.*
- These plans are due to the EPA Regional Administrator by July 1 of the calendar year.

# Why an Annual Monitoring Network Plan?

Pursuant to Section 58.10(a) and (b), network plans must include the following for existing and proposed monitoring sites:

- A statement of purpose for each monitor
- Evidence that siting and operation of each monitor meets the requirements of 40 CFR Part 58, Appendices A, C, D, and E where applicable
- The Air Quality System (AQS) site identification number
- The location, including street address and geographical coordinates
- The sampling and analysis method(s) for each measured parameter
- The operating schedules for each monitor
- Any proposals to remove or move a monitoring station within a period of 18 months following plan submittal
- The monitoring objective and spatial scale of representativeness for each monitor
- The identification of any sites that are suitable and sites that are not suitable for comparison against the annual PM<sub>2.5</sub> NAAQS, as described in 40 CFR § 58.30
- The Metropolitan Statistical Area (MSA), Core Based Statistical Area (CBSA), Combined Statistical Area (CSA), or other area represented by the monitor



Pennsylvania  
Department of  
Environmental Protection

# **Proposed 2026 Annual Monitoring Network Plan**



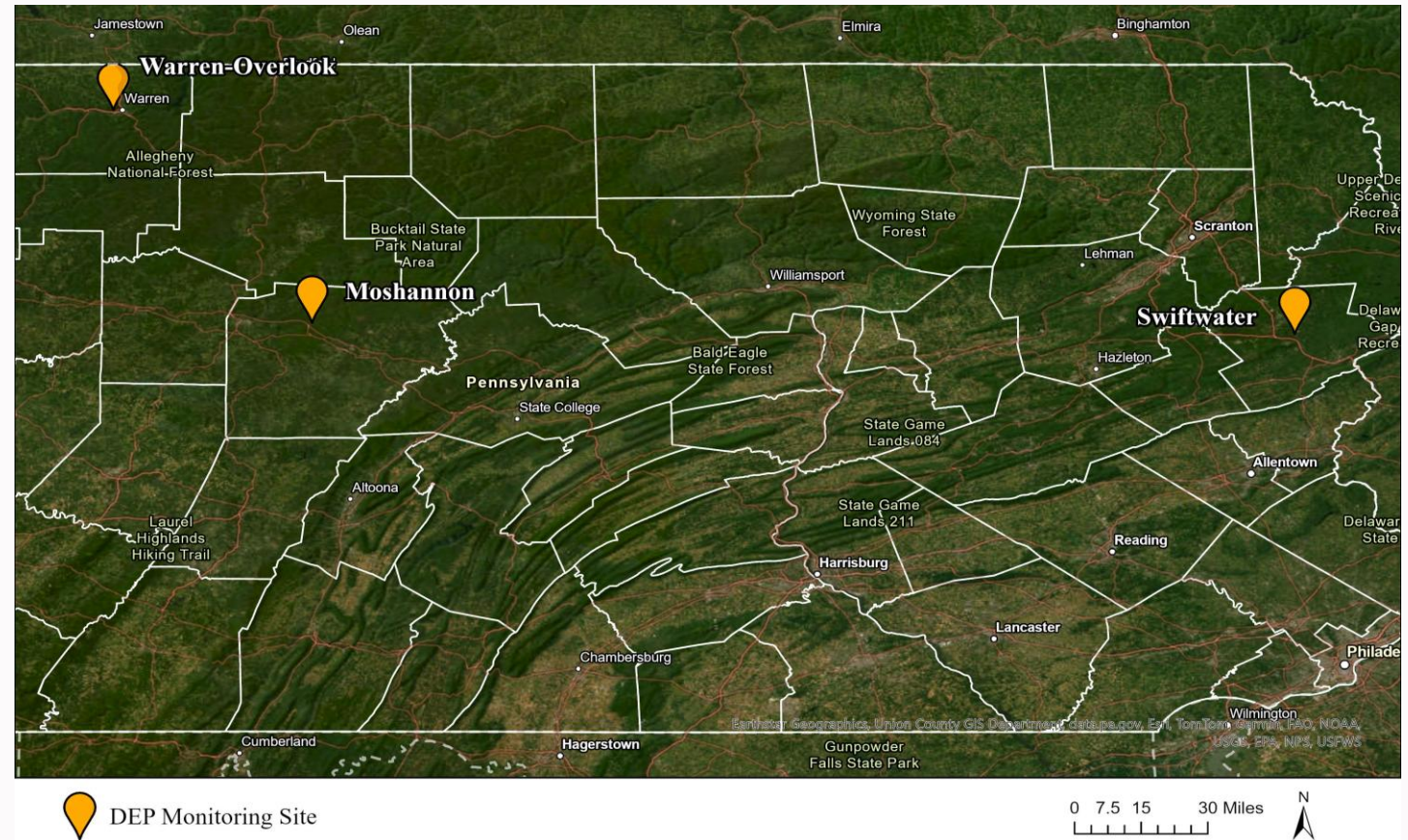
Pennsylvania  
Department of  
Environmental Protection

# 2025 Changes to the Monitoring Network

- Reestablishing Moshannon (Clearfield County) site with ozone and PM2.5;
- Added PM2.5 at Swiftwater (Monroe County); and
- Added ozone and PM2.5 at Warren Overlook (Warren County)

# 2025 Changes to the Monitoring Network

- 1.) Reestablishment of the Moshannon site and add ozone and PM2.5 to the site.
- 2.) Added PM2.5 to Swiftwater site
- 3.) Added ozone and PM2.5 to Warren Overlook site





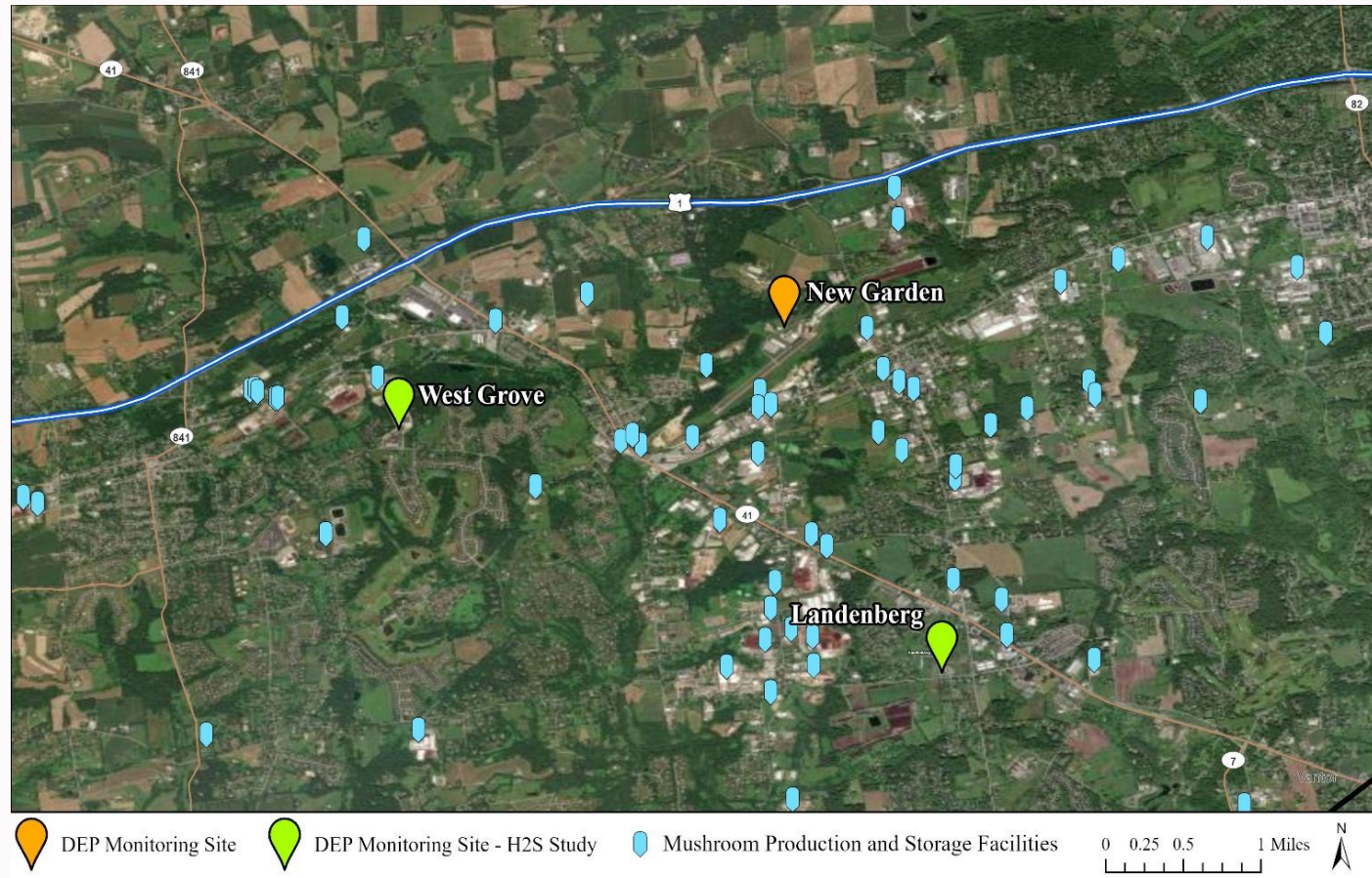
Pennsylvania  
Department of  
Environmental Protection

# 2026 Proposed Changes to the Monitoring Network

- Establish new H<sub>2</sub>S, PM<sub>2.5</sub> monitoring site in Landenberg (Chester County), add H<sub>2</sub>S monitoring to New Garden site.
- Establish new monitoring sites for ozone and PM<sub>2.5</sub> in eastern central Pennsylvania.
- Relocation of Chester (Delaware County) monitoring site.
- Relocate the Laureldale South (Berks County) lead monitoring site.
- Potential addition of NO<sub>2</sub> monitoring to the Fort McIntosh (Beaver County) site.

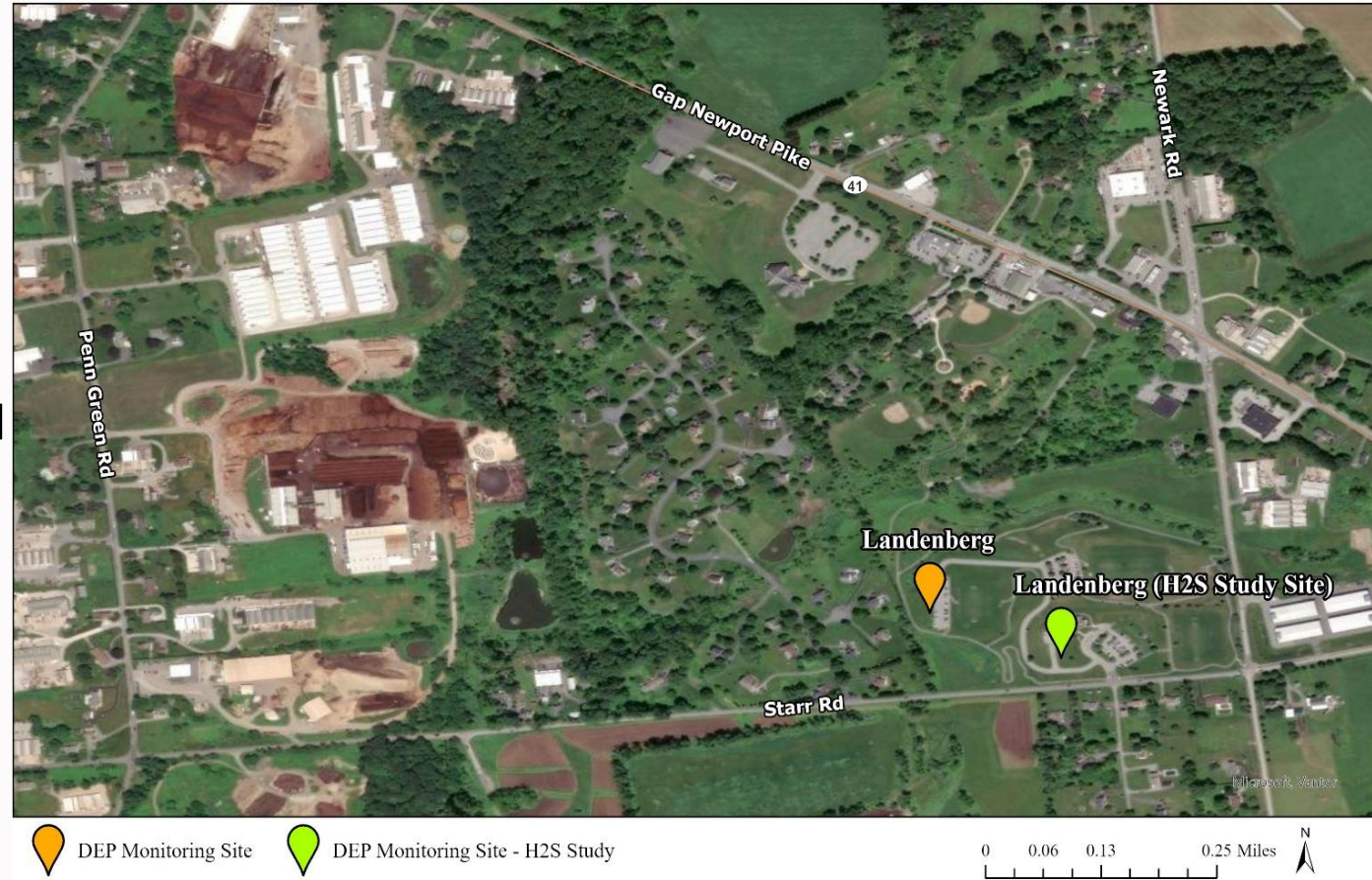
# Monitoring Changes in Chester County

- Previously, DEP conducted studies for H<sub>2</sub>S.
- Why add H<sub>2</sub>S monitor at New Garden?  
New Garden will be used as a background monitor to compare to the new Landenberg site.



# Monitoring Changes in Chester County

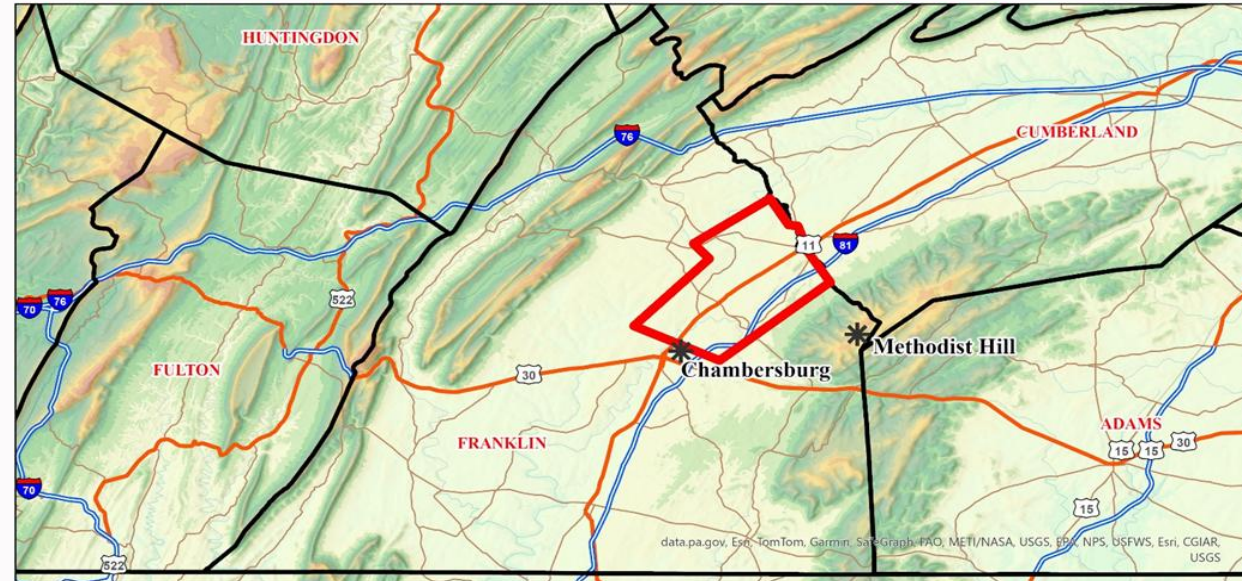
- Why establish a new monitoring site in Landenberg?
  - Request from New Garden Township.
  - To determine levels of H<sub>2</sub>S and PM<sub>2.5</sub> related to nearby mushroom farm operations.
- Anticipated to begin by summer 2026



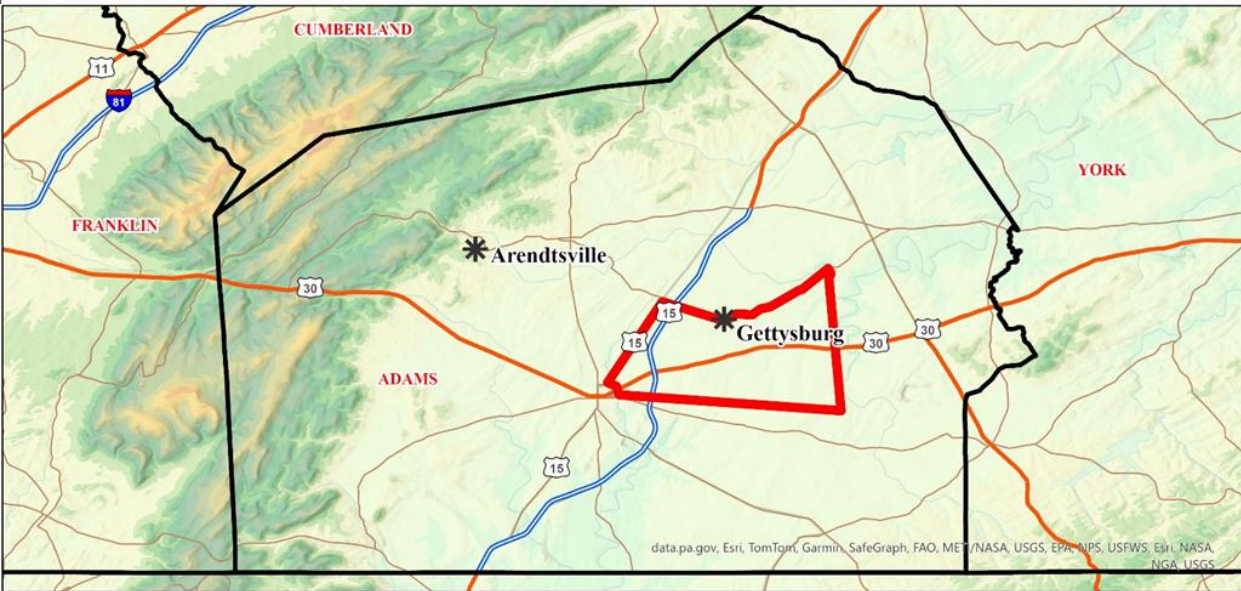


# Establishing New Ozone/PM2.5 Sites

1.) New monitoring site in Chambersburg  
for ozone and PM2.5



\* DEP Monitoring Site - Franklin County    Previously Proposed Area of Interest - Franklin County



\* DEP Monitoring Site - Adams County    Previously Proposed Area of Interest - Adams County

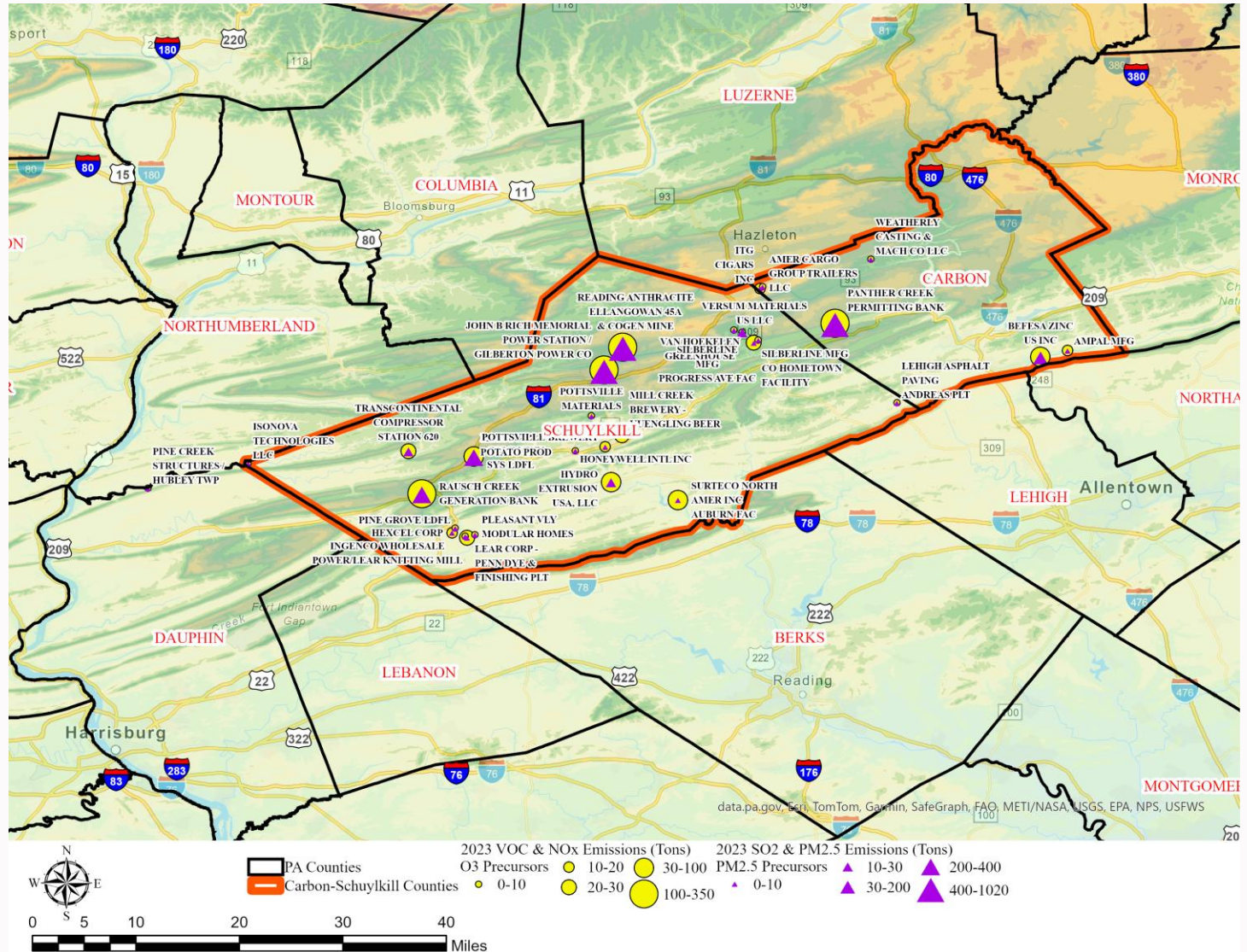
2.) New monitoring site in  
Gettysburg for ozone and PM2.5





Pennsylvania  
Department of  
Environmental Protection

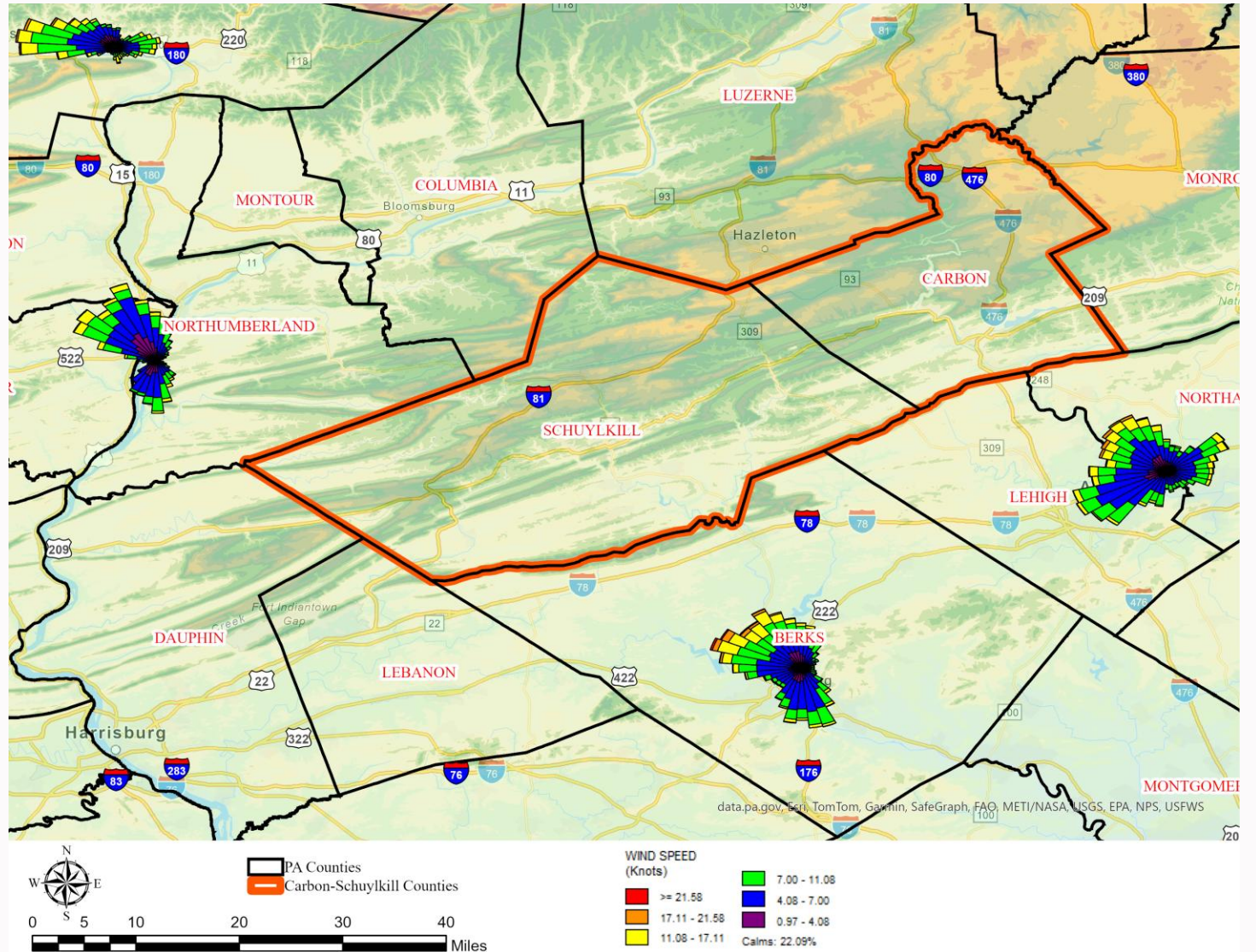
# New Carbon / Schuylkill County Site





Pennsylvania  
Department of  
Environmental Protection

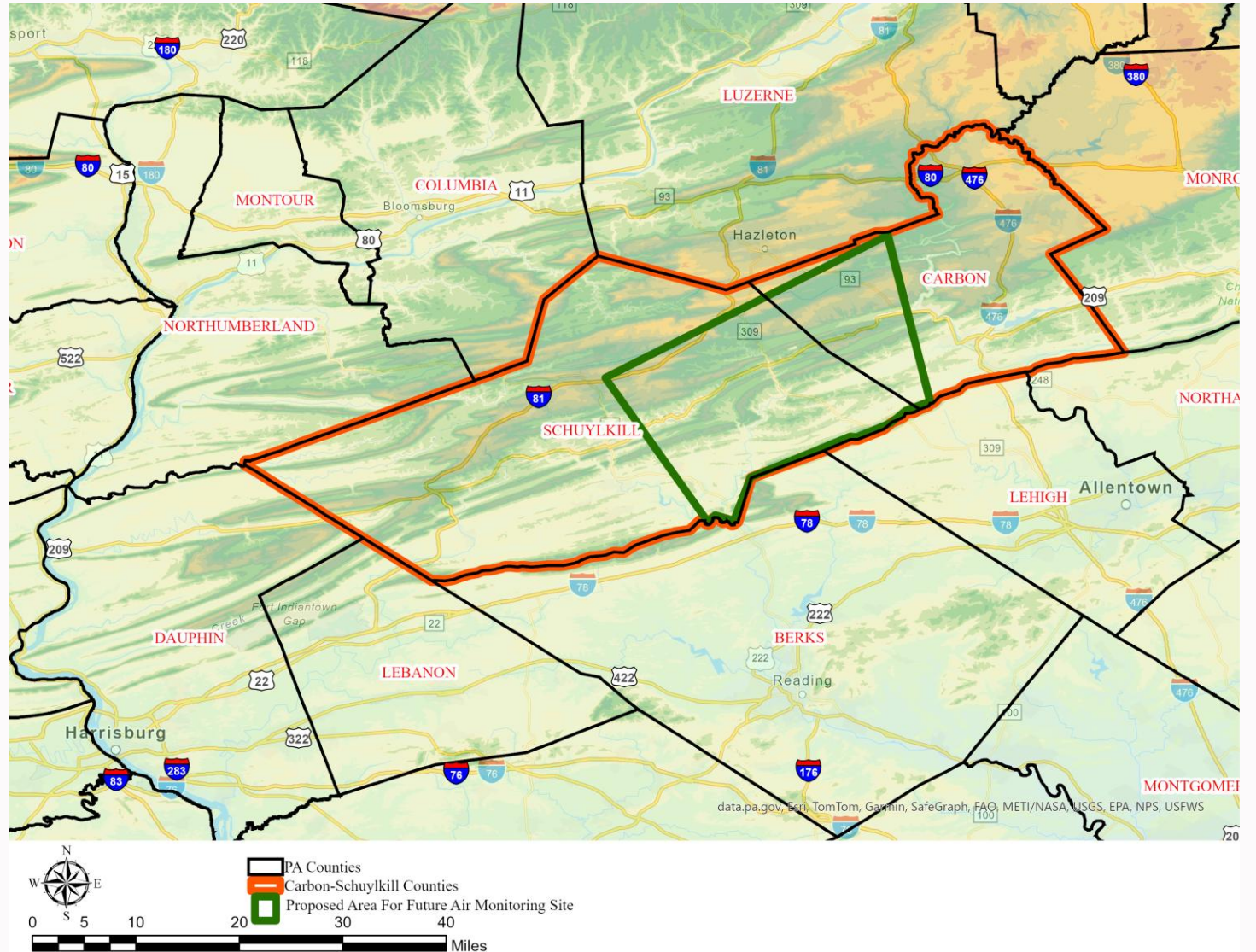
# New Carbon / Schuylkill County Site





Pennsylvania  
Department of  
Environmental Protection

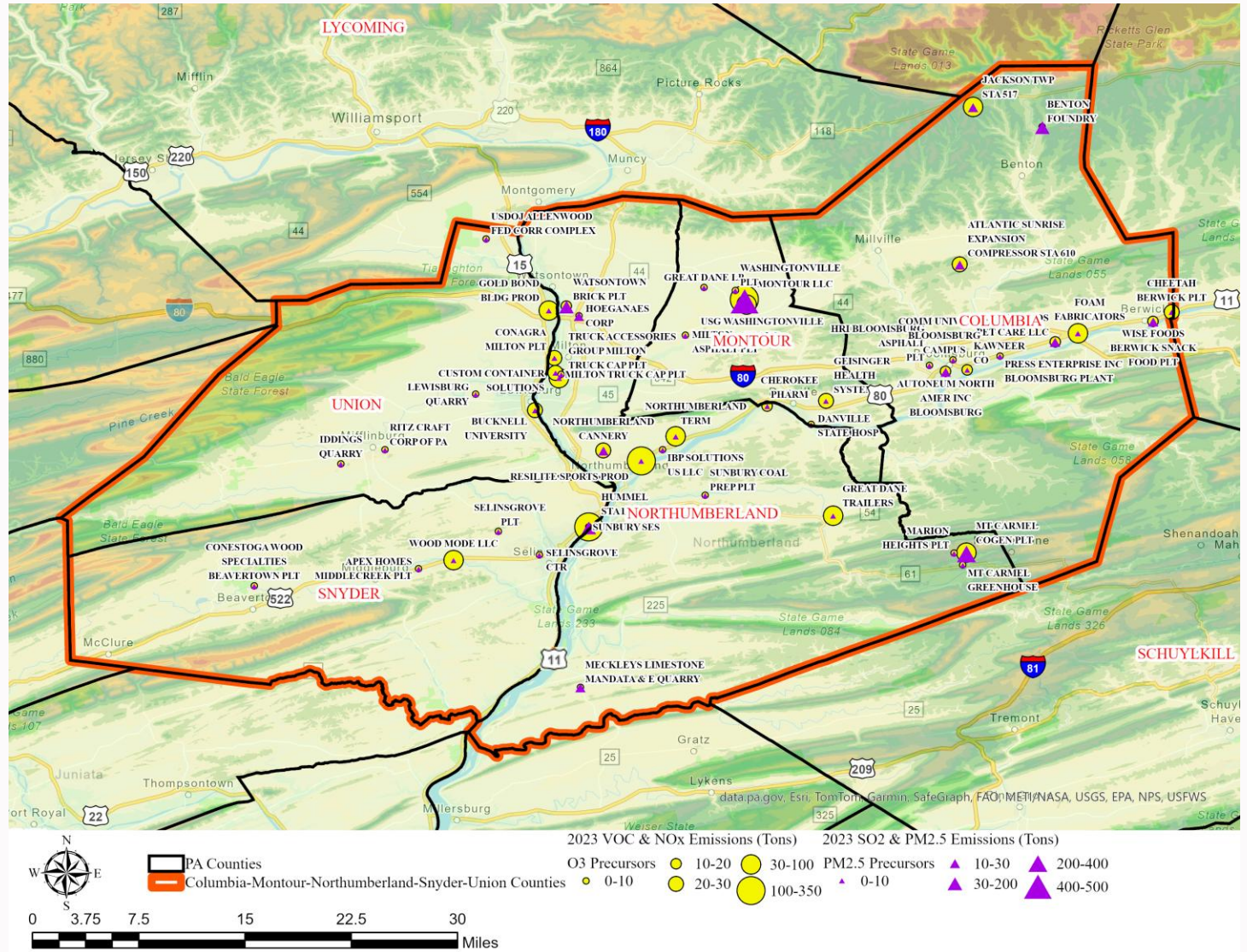
# New Carbon / Schuylkill County Site





Pennsylvania  
Department of  
Environmental Protection

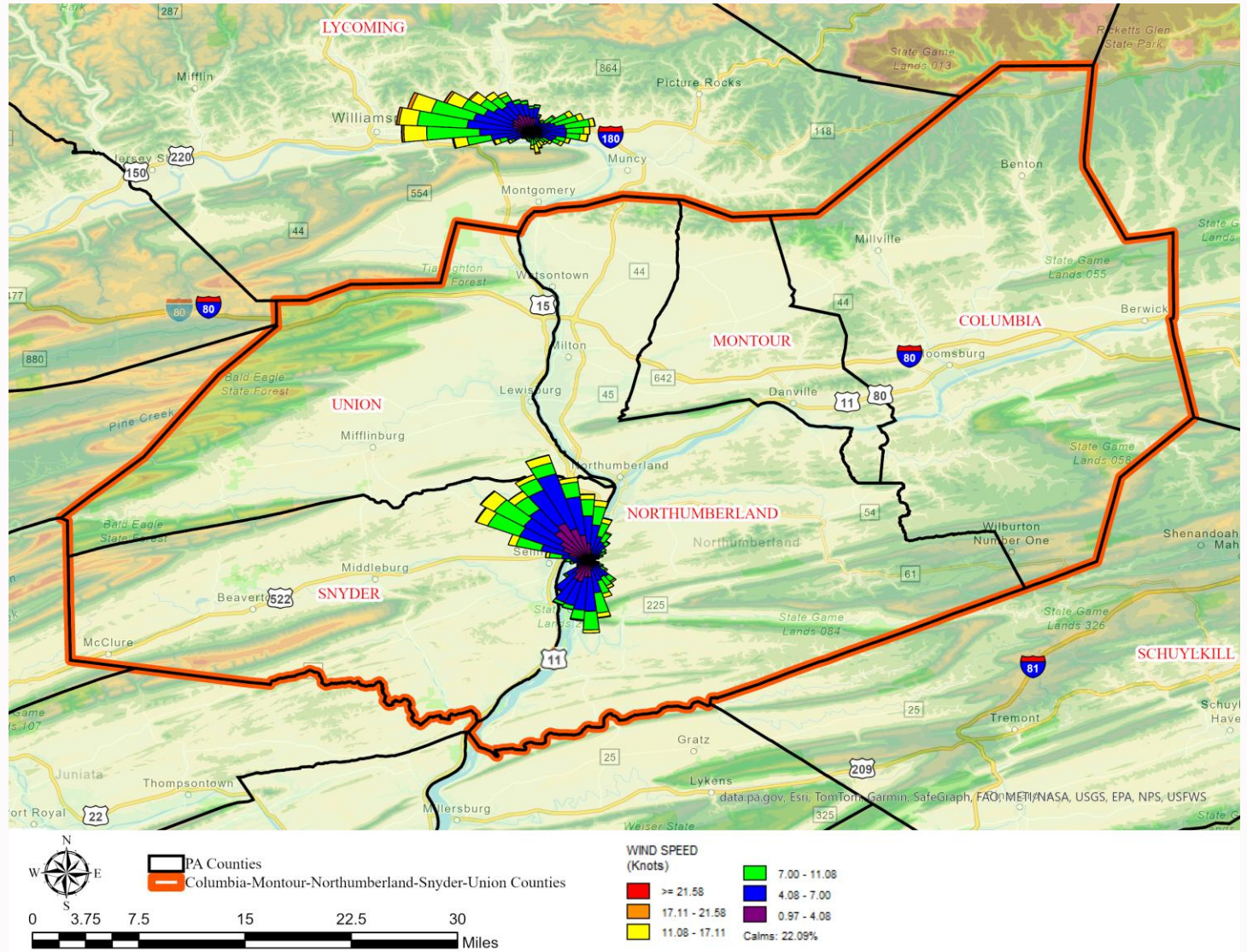
# New Columbia / Montour / Northumberland / Snyder / Union County Site





Pennsylvania  
Department of  
Environmental Protection

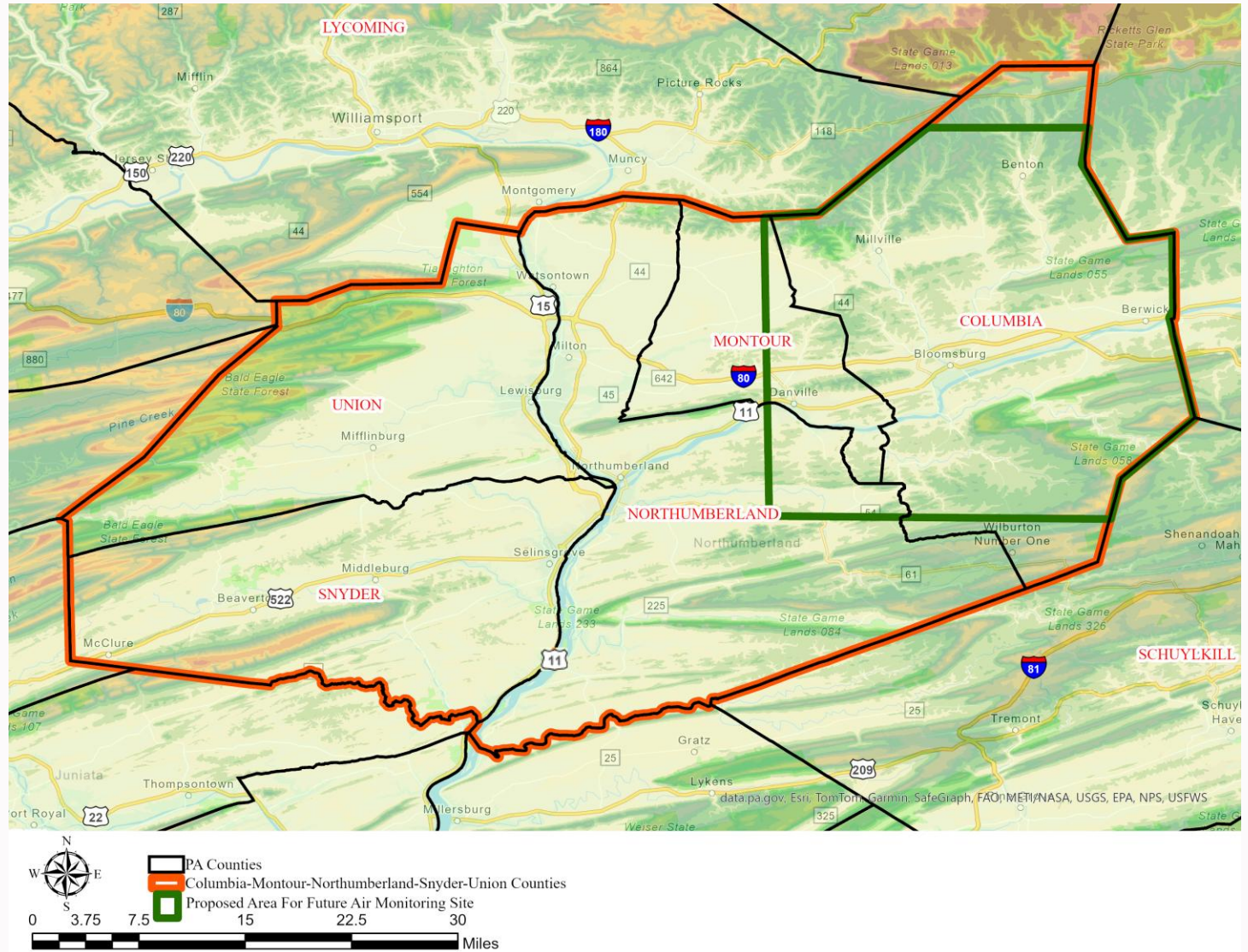
# New Columbia / Montour / Northumberland / Snyder / Union County Site





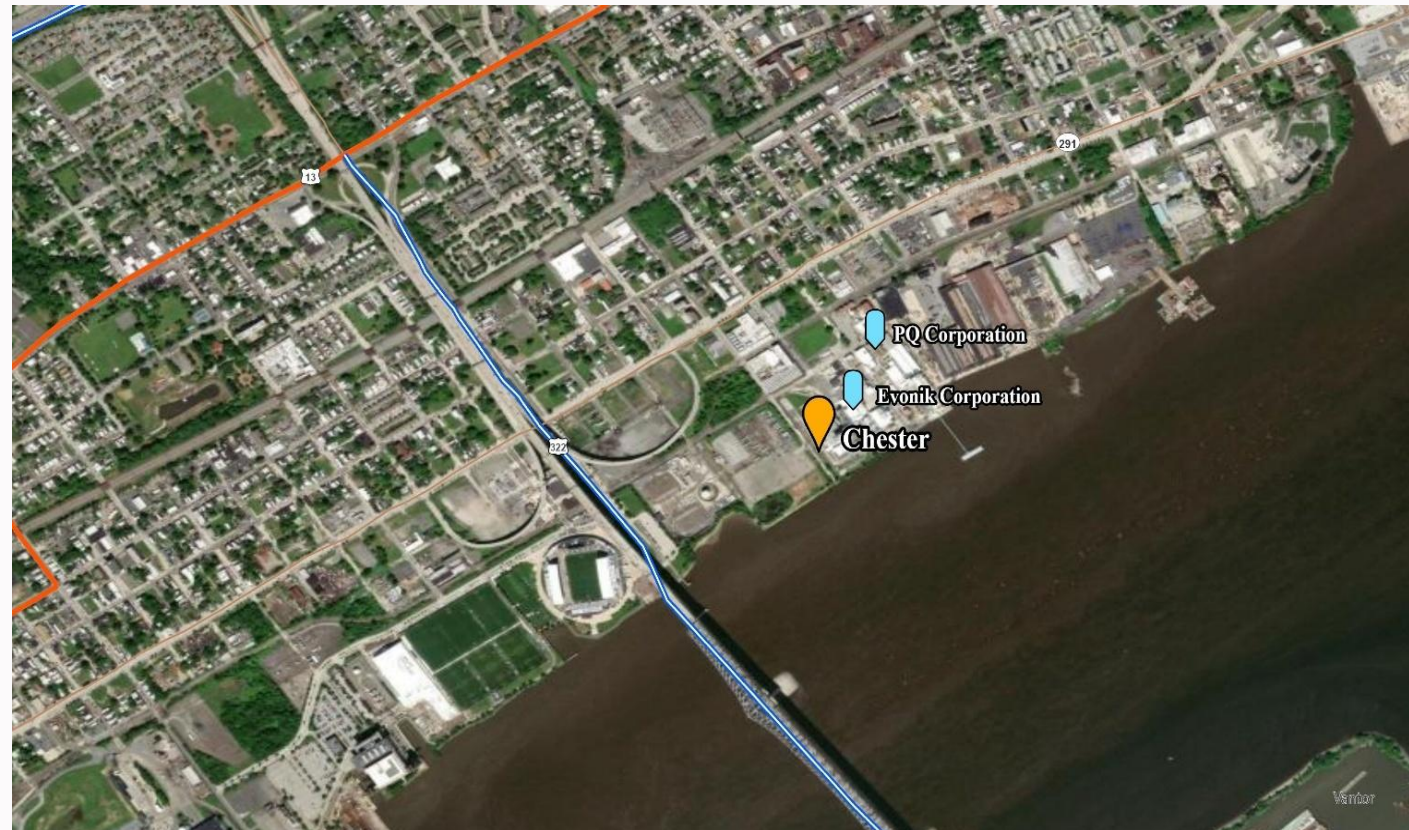
Pennsylvania  
Department of  
Environmental Protection



# New Columbia / Montour / Northumberland / Snyder / Union County Site




# Relocation of Chester Monitoring Site

- Why move the Chester monitoring site?  
The site is being source-impacted.  
PM2.5 speciation shows elevated levels of sodium, silicate, chloride and chlorine.  
Primary production at the nearby facilities is sodium silicates for various industries.

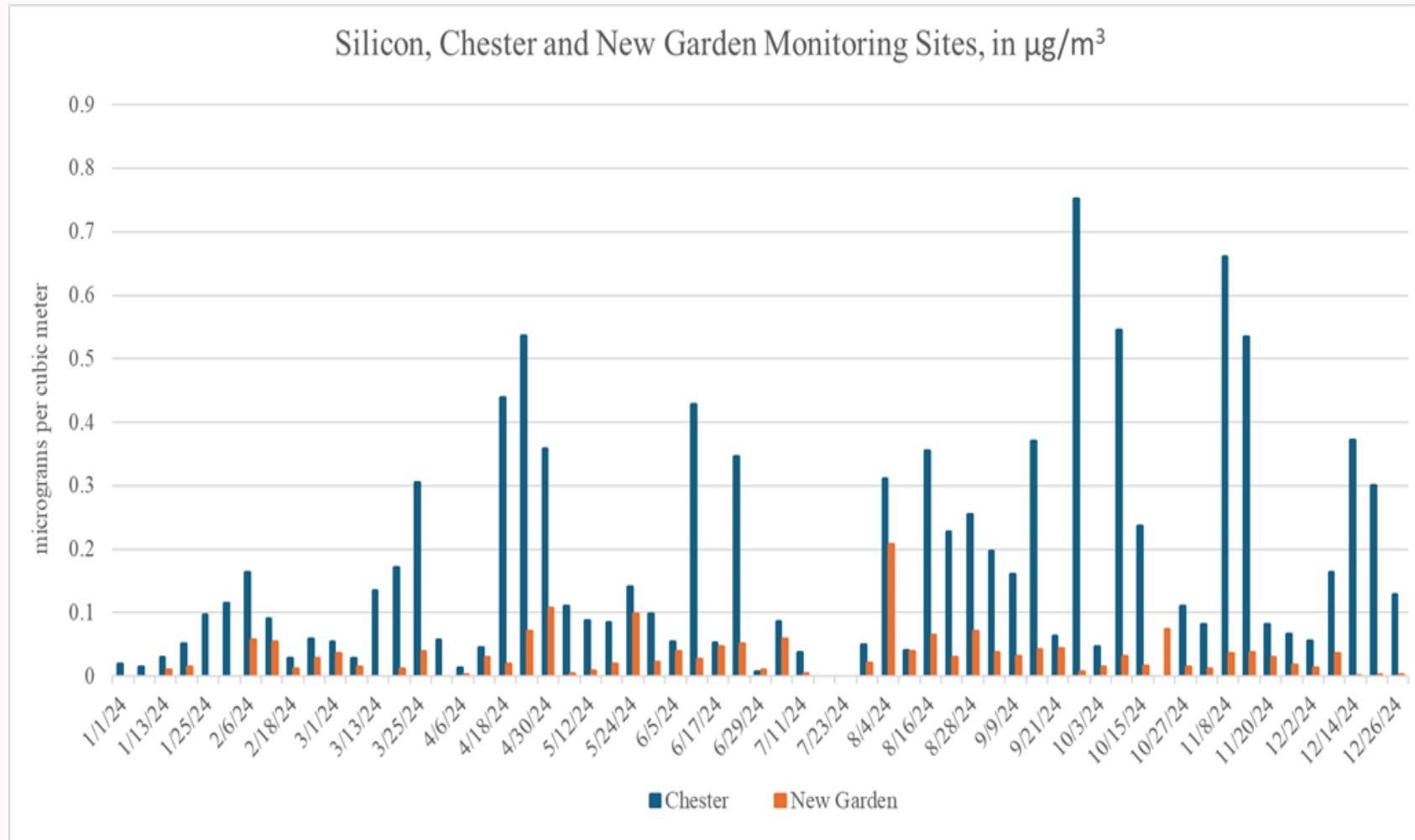


 DEP Monitoring Site     Sources Adjacent to Chester Monitoring Site

0 0.13 0.25 0.5 Miles 



# Relocation of Chester Monitoring Site



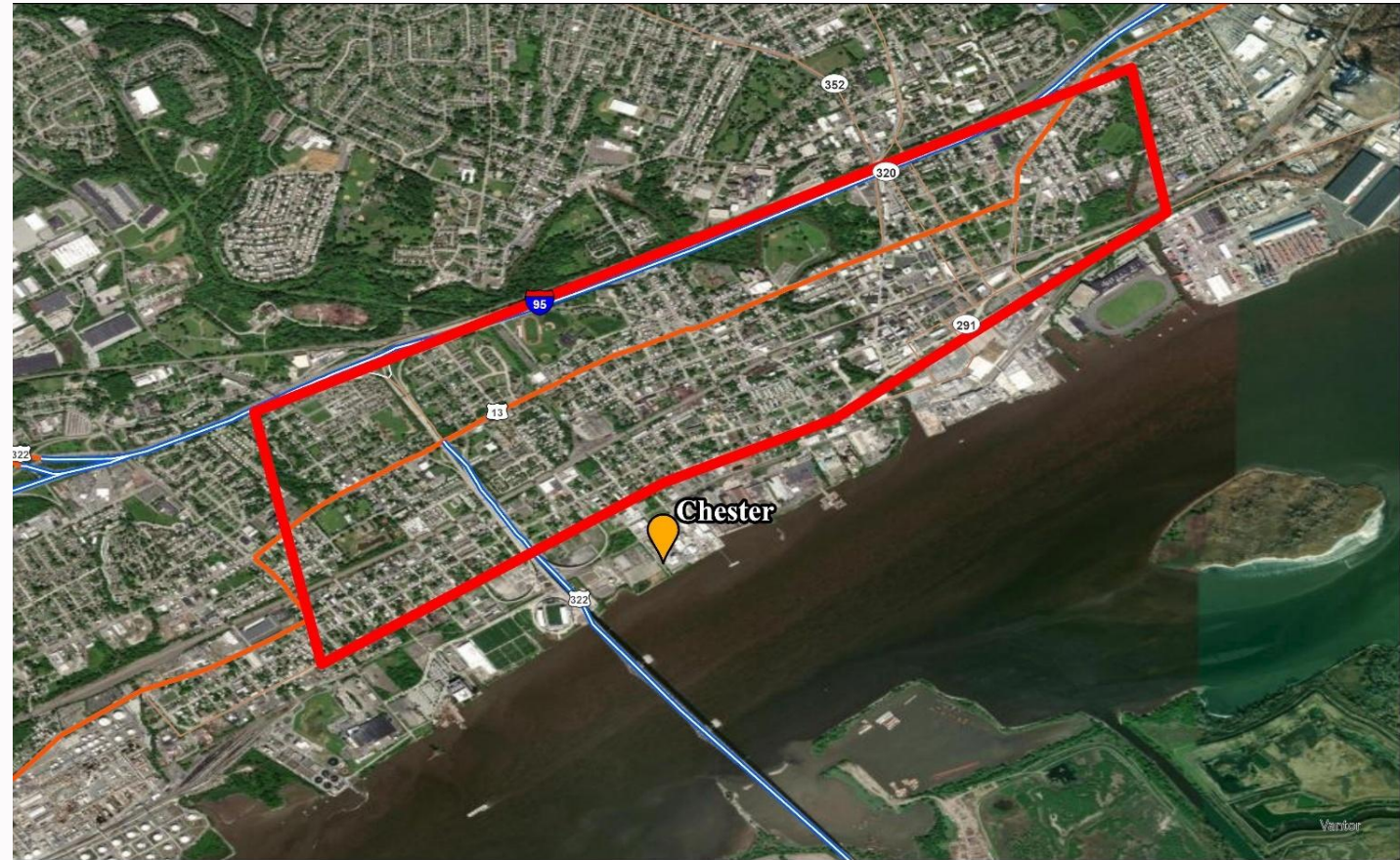


# Relocation of Chester Monitoring Site

- Where would the Chester monitoring site be relocated?

The site would be moved nearby.

The site would stay south of Interstate 95 and inside the box in the image



DEP Monitoring Site



Proposed Area of Interest - Chester Monitoring Site Relocation

0 0.25 0.5 1 Miles



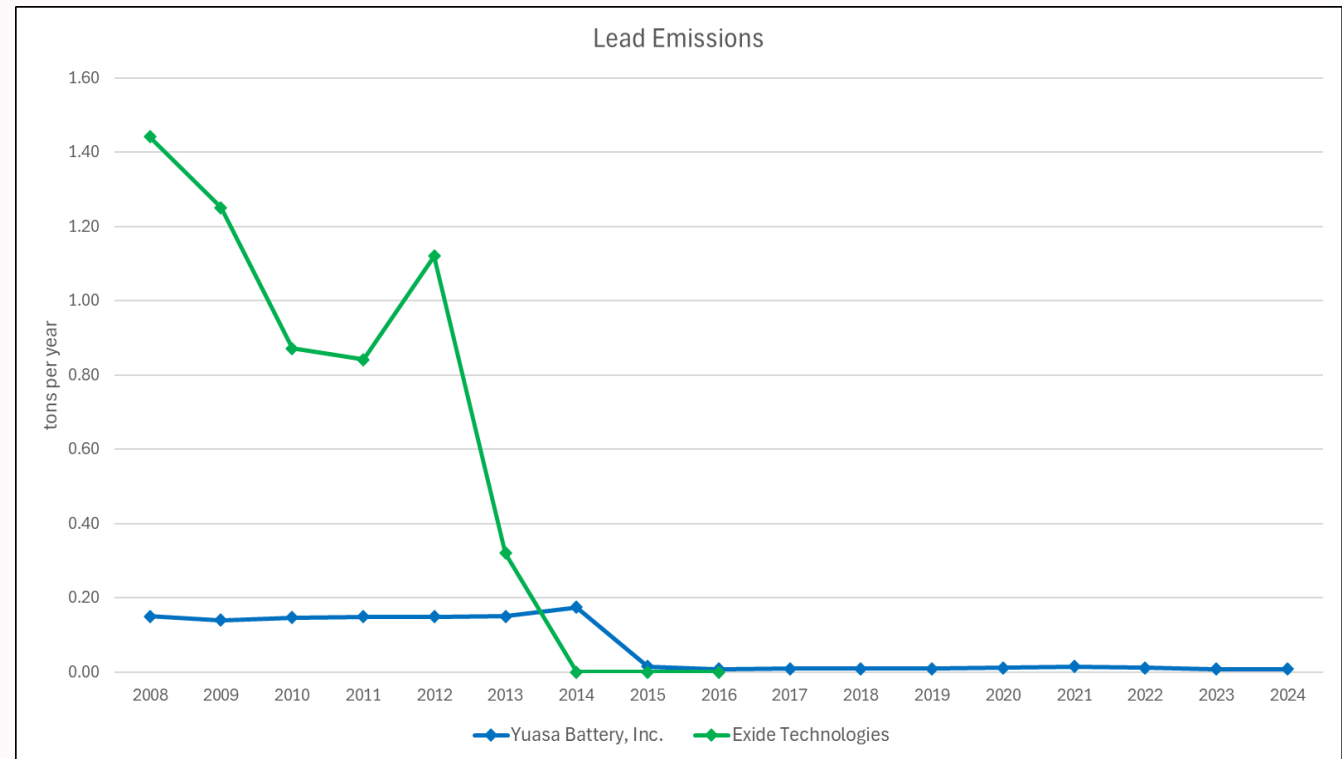
N

# Relocation of South Laureldale Lead Monitoring Site

Why relocate South Laureldale lead monitoring site?

Note: This monitor is within a current 2008 lead NAAQS nonattainment area.

The emissions have changed in the area over the last 10-15 years.

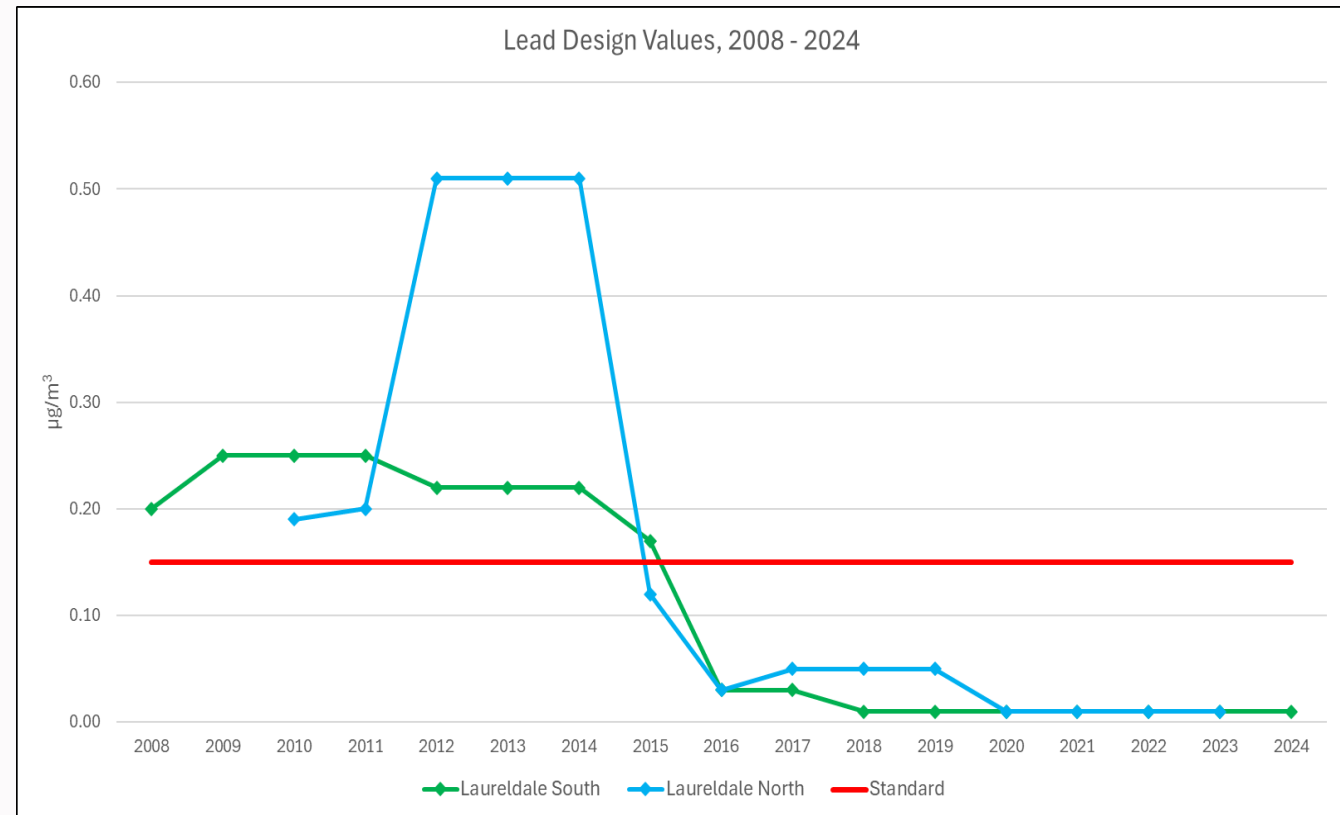


# Relocation of South Laureldale Lead Monitoring Site

Why relocate South Laureldale lead monitoring site?

Note: This monitor is within a current 2008 lead NAAQS nonattainment area.

The design values have been well below the 2008 lead NAAQS since 2016.

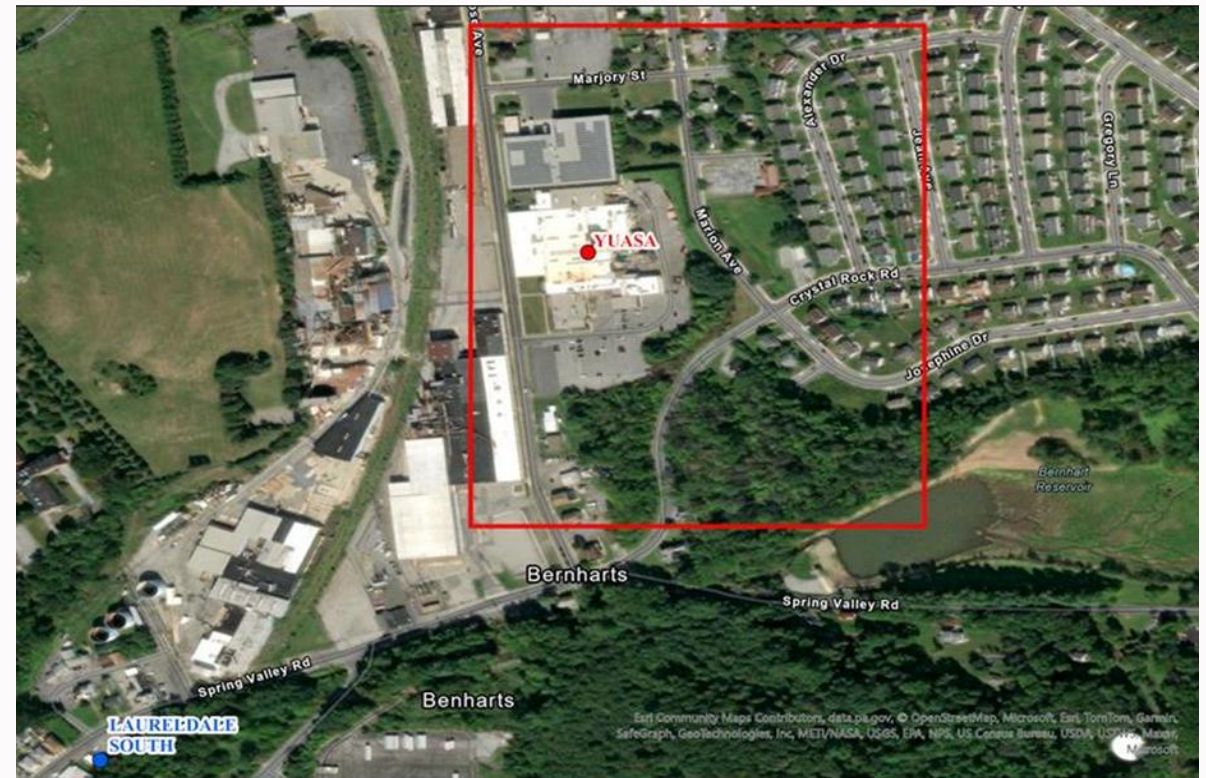


# Relocation of South Laureldale Lead Monitoring Site


Why relocate South Laureldale lead monitoring site?

Note: This monitor is within a current 2008 lead NAAQS nonattainment area.

We would like to be able to better characterize the lead coming from the last remaining facility in the nonattainment area.



- Laureldale South Monitoring Site
- Yuasa Facility

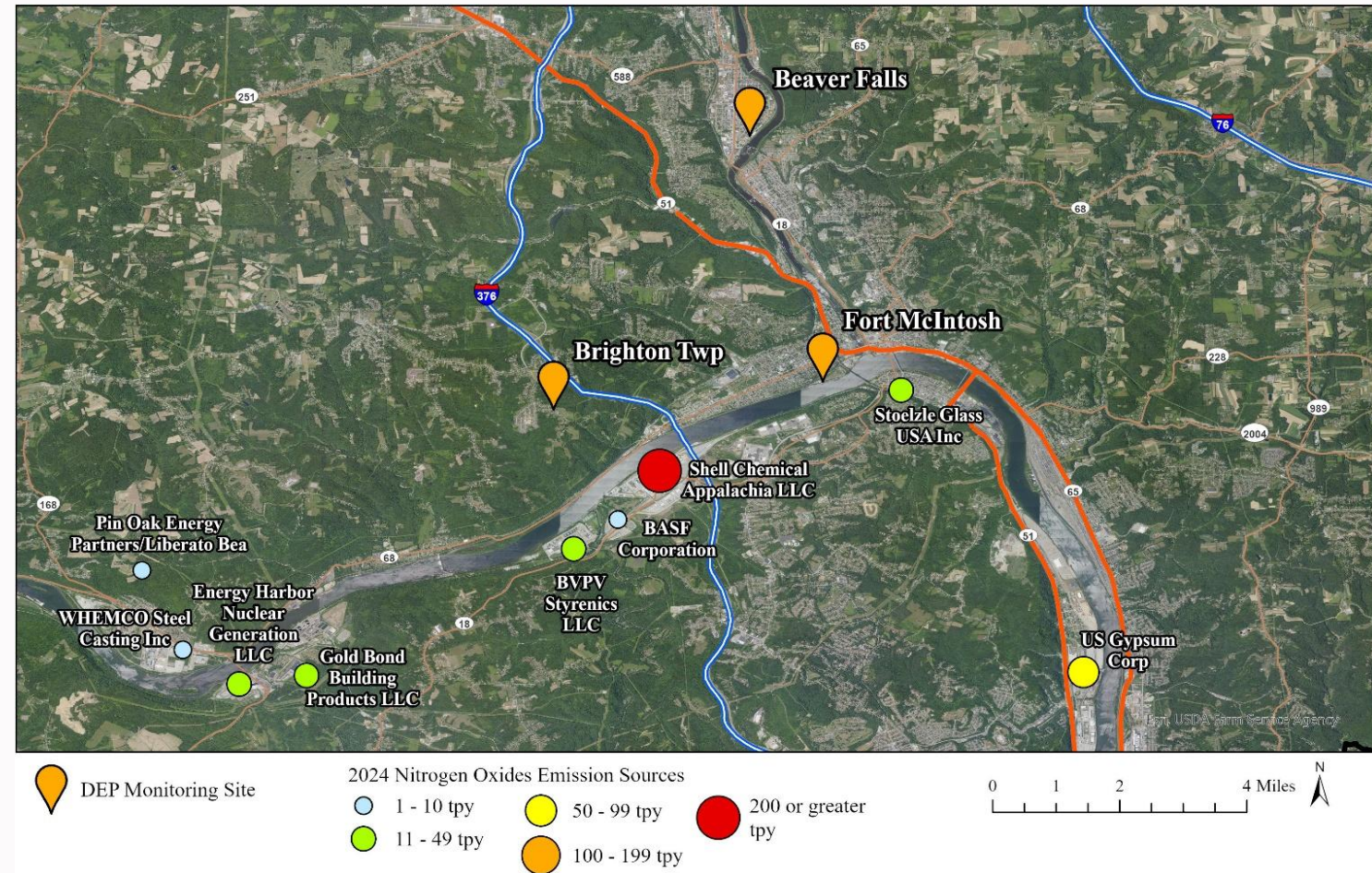
 Proposed overall location, includes area of modeled maximum 3-month average lead concentrations

# Addition of NO<sub>2</sub> to Fort McIntosh

- Why add temporary NO<sub>2</sub> monitor to Fort McIntosh?

A public comment was received on 2025 ANP.

Elevated levels of NO<sub>2</sub> could exist at Fort McIntosh compared to the Beaver Falls site, as it is near a major NO<sub>2</sub> source.





Pennsylvania  
Department of  
Environmental Protection

# Next Steps



Pennsylvania  
Department of  
Environmental Protection

# Next Steps

- DEP's 2026 Annual Monitoring Network Plan will open for a 30-day comment period in June 2026 on the DEP's eComment website (<https://www.ahs.dep.pa.gov/eComment>).
- DEP will respond to public comment and then submit to EPA Region 3 for their approval.
- Final approved Annual Monitoring Network Plan and comment and response document will be published to DEP's Bureau of Air Quality website (<https://greenport.pa.gov/elibrary/GetFolder?FolderID=2057607>).



Pennsylvania  
Department of  
Environmental Protection

# Get In Touch

**Bryan Oshinski**  
**Central Office / Bureau of Air Quality**  
**400 Market Street**  
**Harrisburg, PA 17105**

...

**717.783.8949 / [boshinski@pa.gov](mailto:boshinski@pa.gov)**

The Department of Environmental Protection's mission is to protect Pennsylvania's air, land and water resources and to provide for the health and safety of its residents and visitors, consistent with the rights and duties established under the Environmental Rights Amendment (Article 1, Section 27 of the Pennsylvania Constitution).