



## Drive Electric PA Coalition Meeting

April 24, 2025



Pennsylvania  
Department of  
Environmental Protection



pennsylvania  
DEPARTMENT OF TRANSPORTATION

# TEAMS TIPS

- Basics on Audio and Visual
  - Use the “Chat” to share questions and comments anytime
  - Attendee mics and cameras are disabled
  - Request mic access during member updates if desired
  - “Reactions” are encouraged
- The meeting will not be recorded
  - All presentation slides will be posted online within a couple weeks

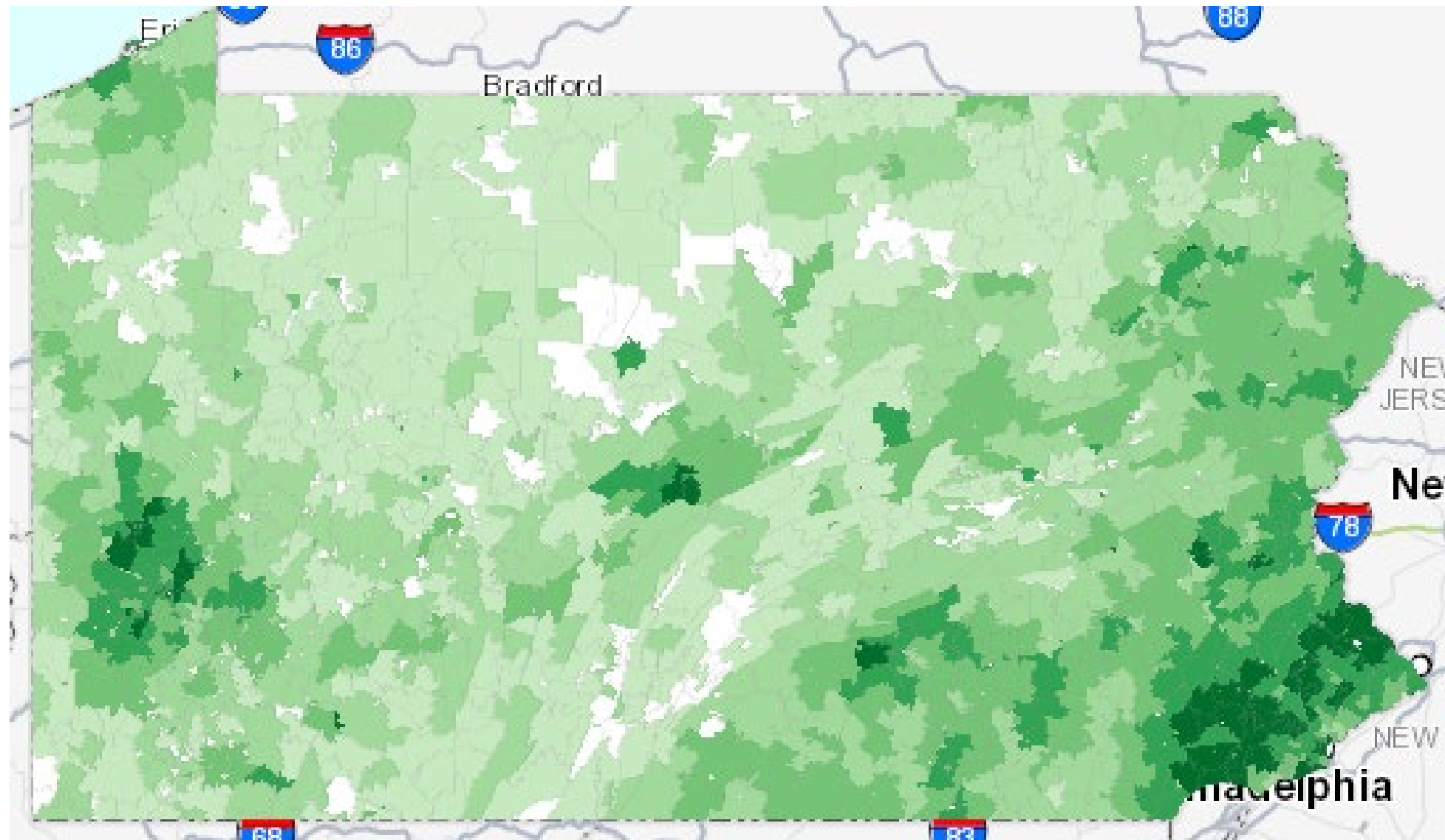
# EV REGISTRATIONS IN PA

	March 2023	March 2024	March 2025
<b>BEV</b>	44,800	66,104	91,863
<b>PHEV</b>	24,346	39,850	50,038
<b>FCEV</b>	1	1	2
<b>Total</b>	69,147	105,955	141,903

- BEV – Battery Electric Vehicle
- PHEV – Plug-in Hybrid
- FCEV – Hydrogen Fuel Cell Electric Vehicle

Source: PennDOT registration database

# EV REGISTRATIONS IN PA



Electric Vehicle Registrations -  
ZIP Code

Electric Vehicle Percent Quarter  
4, 2024



[PennDOT EV  
Registrations  
Interactive Map](#)

# April 2025 DEPA Meeting

## Federal EV Updates

Will Marshall, Program Manager  
Carolyn Bido, Policy Associate



# DEP AND PENNDOT EV UPDATES



# DEP UPDATES



## Rebates for EVs for Low- and Middle-Income Individuals

- Household income must be under 300% of federal poverty to qualify
- \$3,000 rebate for new or used electric vehicle
- \$1,500 rebate for new or used plug-in hybrid
- Additional \$1,000 for low-income applicants

# DEP UPDATES



## Alternative Fuels Incentive Grant 2025 Program

- \$5 million available in competitive funding to incentivize fleet transitions to alternative fuels
- Eligible project types include incremental cost of fleet vehicle purchase and fleet fueling infrastructure
- AFIG 2025 is anticipated to open soon



# DEP UPDATES

## FLEET REQUIREMENTS

Refueling Infrastructure Projects:

**A “fleet” must meet one of the following:**

- A medium-duty fleet of alternative fuel vehicles must be a group of ten or more vehicles with a Gross vehicle weight rating of between 10,000 to 26,000 lbs. (Class 3 through Class 6 vehicles)
- A light-duty fleet of alternative fuel vehicles must be a group of at least two vehicles with a Gross vehicle weight rating of below 10,000 lbs. (Class 1, Class 2a and Class 2b vehicles)

# DEP UPDATES

## AFIG 2024 AWARDS



- 16 projects from Round 1  
were awarded \$2,550,137 on December 13, 2024
- The second round closed December 20, 2024
- 39 applications were received requesting \$5,134,785-under review by DEP
- Award announcements coming soon

# DEP UPDATES



- Driving PA Forward (VW)
- Diesel truck replacement
- Focus on trucks impacting EJ areas
- Case study development
- 13 commercial and municipal fleets awarded
- 89 trucks funded
- Class 5 thru 8
- PSU Larson Transportation Inst.

# DEP UPDATES

## MUNICIPAL EV EDUCATION

- DEP conducted municipal EV education and feedback sessions
- Provided EV and charging infrastructure technical assistance to four PA municipalities
- Developed an Electric Vehicle Guidebook for PA Municipalities
  - Under review for publishing

# OVERVIEW OF PA'S NEVI FORMULA PROGRAM



## \$171.5 Million

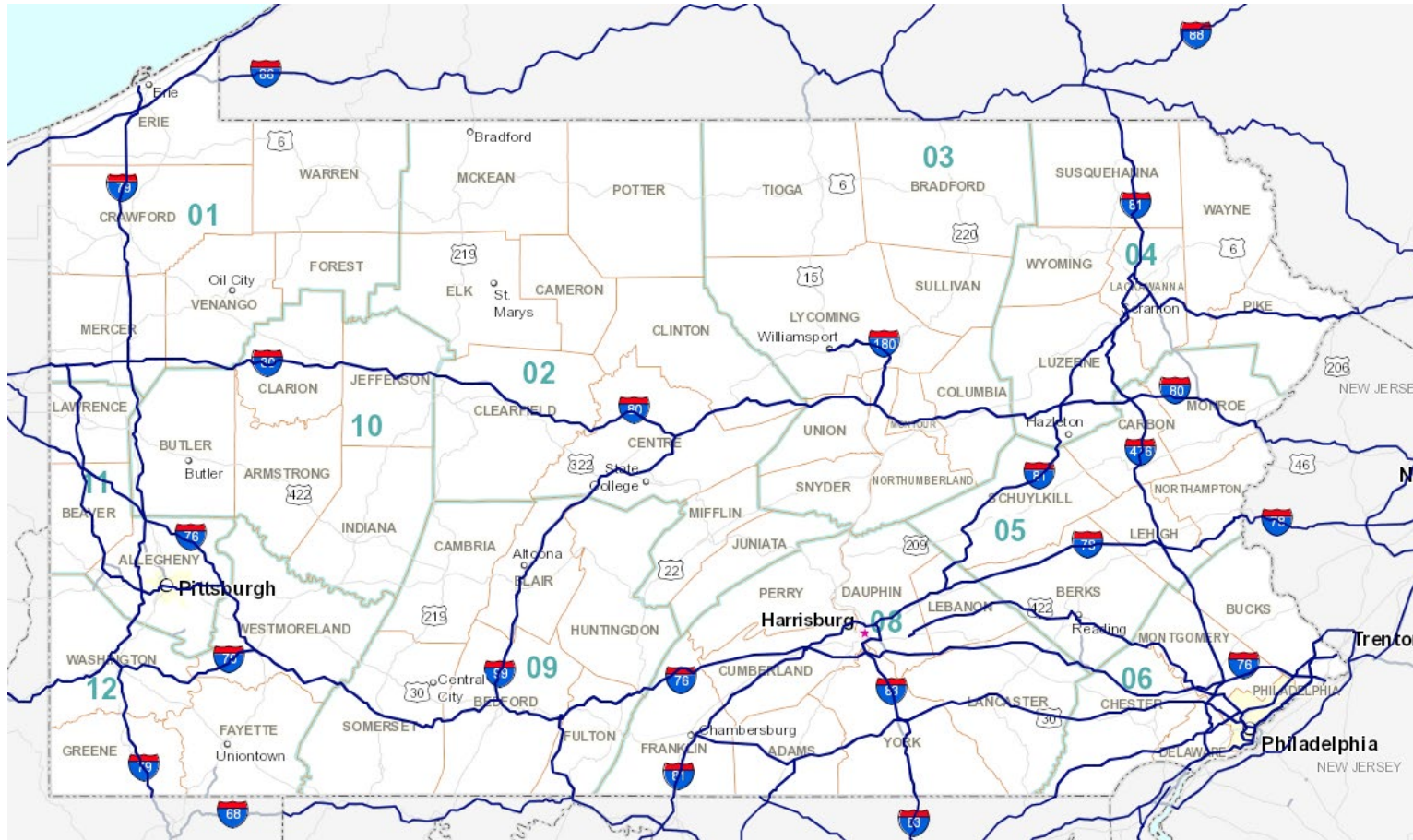
Total Pennsylvania NEVI Funds

FFY 2022	FFY 2023	FFY 2024	FFY 2025	FFY 2026
<b>\$25.4 M</b>	<b>\$36.5 M</b>	<b>\$36.5 M</b>	<b>\$36.5 M</b>	<b>\$36.5 M</b>

## PA NEVI Plan Annual Updates

PA NEVI Plan Year	For FFY Funding	Plan Submitted	Plan Approved
2022 PA NEVI Plan	FFY 2022, FFY 2023	July 21, 2022	September 14, 2022
2023 PA NEVI Plan	FFY 2024	August 1, 2023	October 4, 2023
2024 PA NEVI Plan	FFY 2025	August 28, 2024	November 15, 2024

# EV ALTERNATIVE FUEL CORRIDORS



- PennDOT has nominated corridors over 7 rounds - includes interstates and portions of US 30, US 15, Route 1, and Route 422 - over 1,800 miles of roadway
- NEVI funding must be applied to AFCs until a “**Build-Out**” certification by FHWA



# YEARS 1-2 CHARGING FOCUS

## DC Fast Charging

Public

4 ports

CCS Connectors

At least 150kw power per port (600kw total)

**Within 1-mile of highway**, 50 miles of the next station

## How to Charge Your EV



Charge Time



Charging Locations

**Level 1**

**3.5 - 6.5 miles**  
Per Hour

Residential,  
Workplace

**Level 2**

**14 - 35 Miles**  
Per Hour

Residential,  
Workplace,  
Destinations

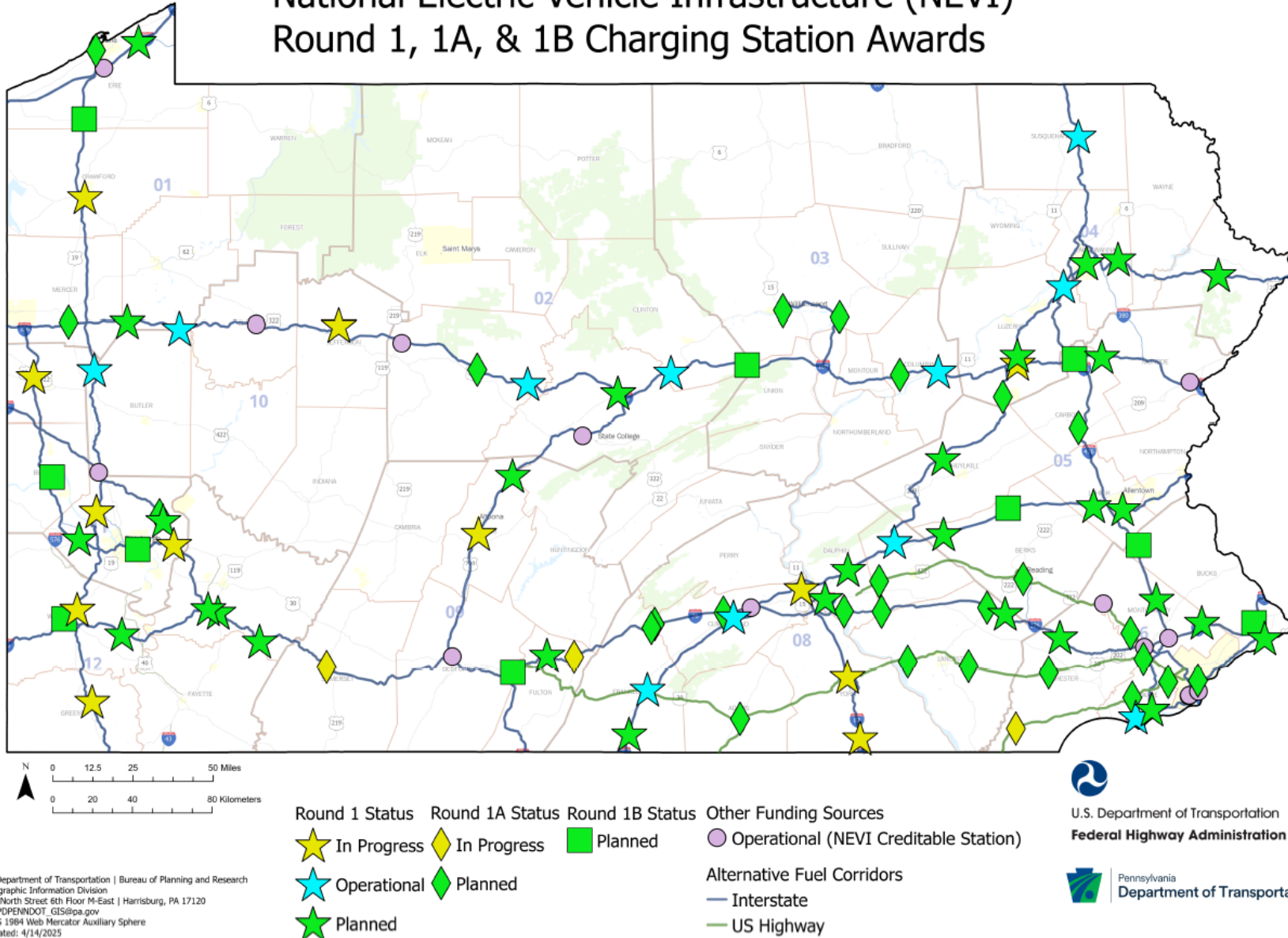
**DC Fast Charge**

**200+ miles**  
Per Hour

Highways,  
Communities,  
Destinations

# ROUND 1, 1A & 1B ACTIVE PROJECTS

National Electric Vehicle Infrastructure (NEVI)  
Round 1, 1A, & 1B Charging Station Awards



91 projects within  
43 counties

\$59.0 million federal  
investment

40 projects in or within ½  
mile of a Disadvantaged  
Community

Typical Project Timeline  
18-24 months

[PennDOT Active NEVI  
Projects Interactive Map](#)



U.S. Department of Transportation  
Federal Highway Administration



Pennsylvania  
Department of Transportation





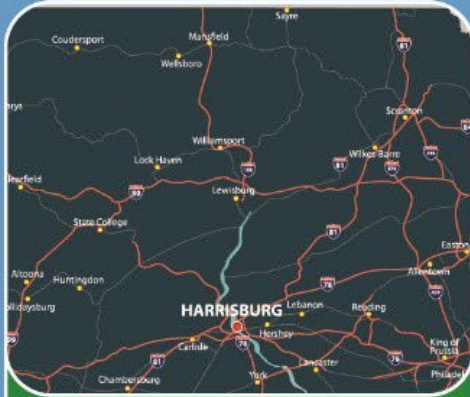
# OPERATIONAL NEVI STATIONS

## 3<sup>rd</sup> State in the Nation with a NEVI Funded Station

- First project opened to the public on December 21, 2023
  - Located at a Pilot Travel Center in Pittston, PA
- Operational NEVI stations now also include:
  - Emlenton Truck Plaza – Emlenton, PA
  - Tesla – Aston, PA
  - Loves Travel Stops – Jonestown, PA
  - Loves Travel Stops – Slippery Rock, PA
  - Francis Energy – Chambersburg, PA
  - Francis Energy – Carlisle, PA
  - Pilot Travel Centers – New Milford, PA
  - Pilot Travel Center – Mill Hall, PA
  - Francis Energy – Kylertown, PA
  - Loves Travel Stops – Mifflinville, PA



# COMMUNITY FRAMEWORK



**Corridor  
Connections**



**Community  
Charging**



**Critical  
Investments**



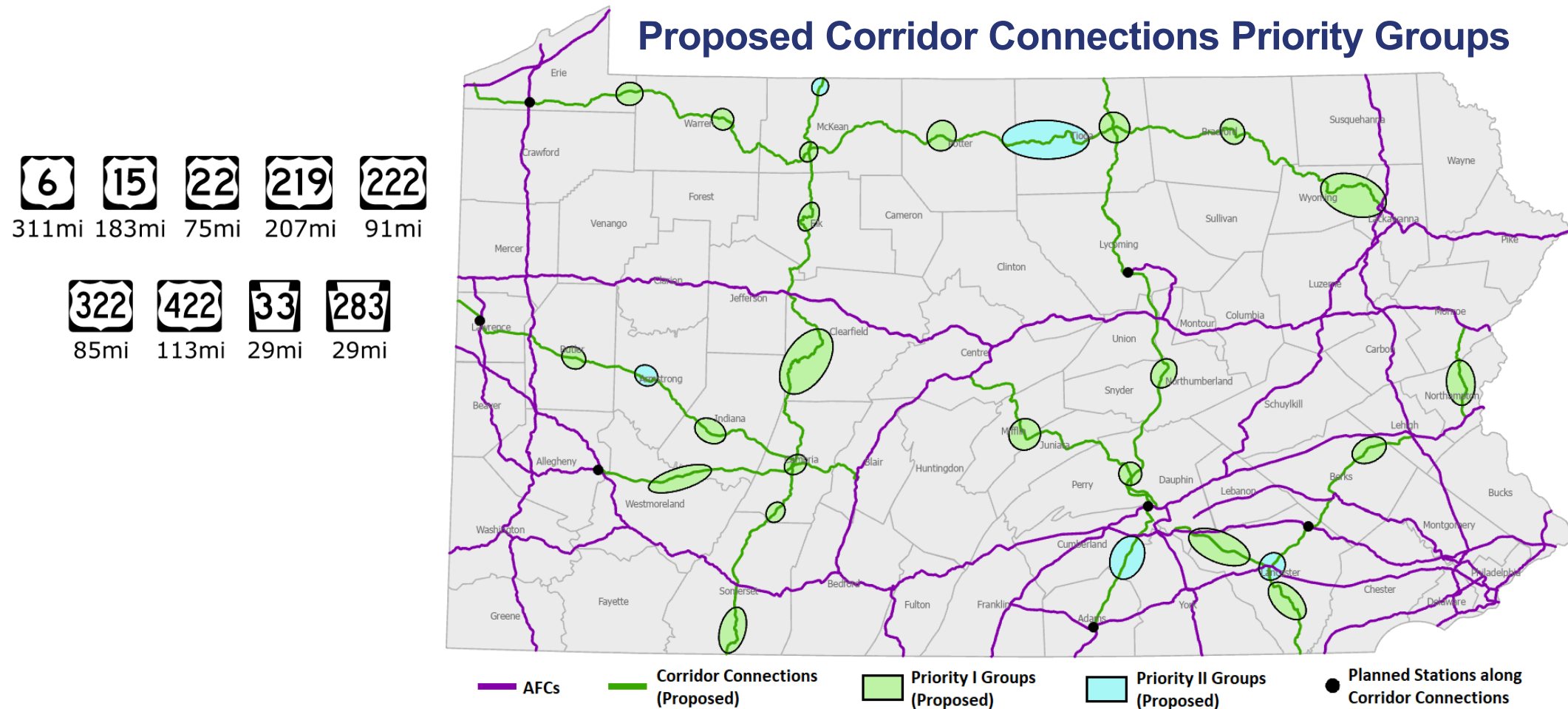
**EV  
Workforce**

## PennDOT NEVI Community Phase Framework



# CORRIDOR CONNECTIONS: \$10-15 MILLION

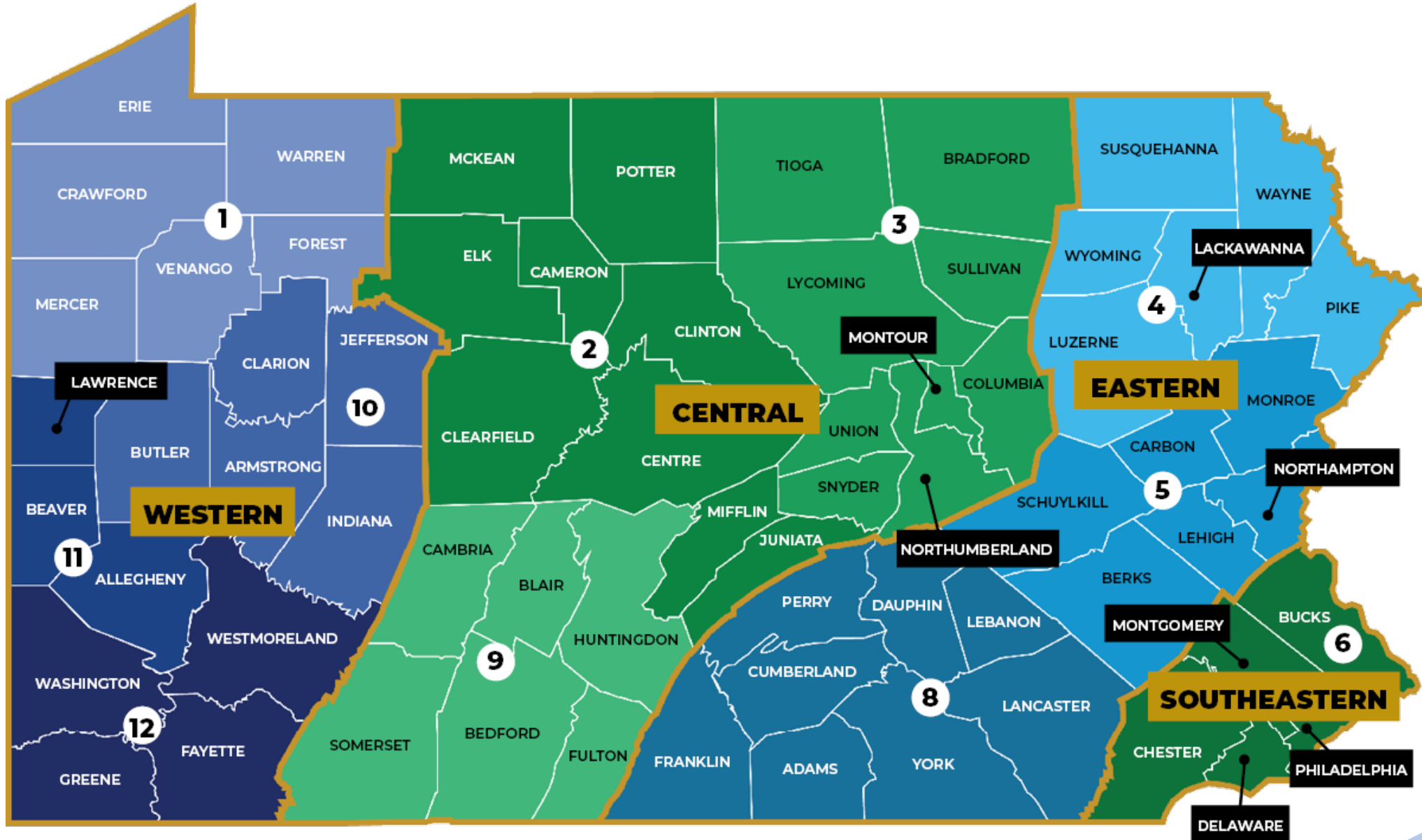
- The goal of Corridor Connections is to fill long-distance travel route gaps.
- Each “bubble” in the map below is a portion of roadway where PennDOT will seek to fund a charging station along the roadway.



# COMMUNITY CHARGING: \$75-80 MILLION

- The goal of the Community Charging Focus Area is to improve charging access within communities.
- Through a public survey, and via community engagement performed by local transportation planning agencies, PennDOT is gathering feedback on:
  - Charging station features (i.e. accessibility, affordability, safety, etc.)
  - Charging location types (i.e. on-street in downtowns, destinations, etc.)
  - Charging station locations (i.e. specific towns or neighborhoods)
- Local charging station priorities will be incorporated into the competitive funding opportunities

# REGIONS



# COMMUNITY CHARGING: \$75-80 MILLION

TSMO Region	Planning Partner	Planned Funding (%)	Planned Funding Amount	Planned Regional Funding (%)	Planned Regional Funding Amount
Western	SPC MPO Allegheny County	18 - 20% 9.4 - 11%	\$14 - 16 M \$7.5 - 8.5 M	22 - 25%	\$17 - 20 M
	Northwest RPO	1.5 - 2.3%	\$1.2 - 1.8 M		
	Erie County MPO	1.7 - 2.4%	\$1.3 - 1.9 M		
	Mercer County MPO	0.9 - 1.4%	\$0.7 - 1.1 M		
Central	SEDA-COG MPO	2.2 - 2.9%	\$1.7 - 2.3 M	8.2 - 9.4%	\$6.5 - 7.5 M
	North Central RPO	1.3 - 1.9%	\$1.0 - 1.5 M		
	Southern Alleghenies RPO	1.0 - 1.5%	\$0.8 - 1.2 M		
	Northern Tier RPO	0.9 - 1.4%	\$0.7 - 1.1 M		
	Blair County MPO	0.5 - 0.8%	\$0.4 - 0.6 M		
	Cambria County MPO	0.7 - 1.0%	\$0.5 - 0.8 M		
	Centre County MPO	1.2 - 1.8%	\$0.9 - 1.4 M		
	Lycoming County MPO	0.4 - 0.7%	\$0.3 - 0.5 M		
Eastern	Lehigh Valley MPO	4.4 - 5.7%	\$3.5 - 4.5 M	28 - 33%	\$22 - 26 M
	Lackawanna Luzerne MPO	3.7 - 4.7%	\$2.9 - 3.7 M		
	Tri-County MPO	3.7 - 4.7%	\$2.9 - 3.7 M		
	Lancaster County MPO	3.2 - 4.2%	\$2.5 - 3.3 M		
	NEPA MPO	3.2 - 4.2%	\$2.5 - 3.3 M		
	Berks County MPO	2.8 - 3.7%	\$2.2 - 2.9 M		
	York County MPO	2.8 - 3.7%	\$2.2 - 2.9 M		
	Franklin County MPO	0.8 - 1.3%	\$0.6 - 1.0 M		
	Lebanon County MPO	1.0 - 1.5%	\$0.8 - 1.2 M		
	Adams County MPO	0.5 - 0.8%	\$0.4 - 0.6 M		
	Wayne County	0.3 - 0.5%	\$0.2 - 0.4 M		
Southeastern	DVRPC MPO Philadelphia County	34 - 42% 18 - 23%	\$27 - 33 M \$14 - 18 M	35 - 40%	\$28 - 32 M

# COMMUNITY CHARGING: \$75-80 MILLION

	2024		2025		AFC FBO				
	Q3	Q4	Q1	Q2	Q1	Q2	Q3	Q4	Q4+
1. Program Development and Outreach									
2. Community Charging Use Rankings and Community Priority List Development									
3A-B. Community Charging Funding Opportunity – Development									
3C-E. Community Charging Funding Opportunity – Release and Selections									
4. Post-Selection Activities									
5. Follow-Up Rounds as Funding Remains									

## Example Community Charging Initiatives

On-Street Charging in Downtowns

Parking Lots in Cities and Towns

Multi-Unit Dwelling Charging Solutions

Destination Charging (e.g., parks, recreation, events)

Planning Partner specific focus areas



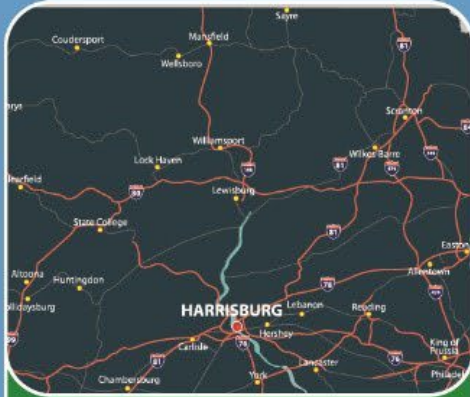
No.	Community Charging Initiative Type	Priority Scale
DVRPC – I0001	On Street Charging in Downtowns	1



No.	Communities (Zip Code, City, County, Description)
DVRPC – C0001	Downtown Norristown, Montgomery County



# COMMUNITY FRAMEWORK



## Corridor Connections

\$10-\$15 million



## Community Charging

\$75-\$80 million



## Critical Investments

\$5-\$10 million



## EV Workforce

\$4-\$6 million

## PennDOT NEVI Community Phase Framework



# ATTENDEE EV UPDATES



# NEXT MEETING

- Summer/Fall 2025
  - Virtual only
- Let us know your thoughts and feedback from today's meeting
- Feel free to share content/speaker ideas

# THANK YOU!

**Colton Brown and Derrick Herrmann, P.E.**

**RA-PDEVcorridors@pa.gov**

**Tristyne Youngbluth**

**tyoungblut@pa.gov**

