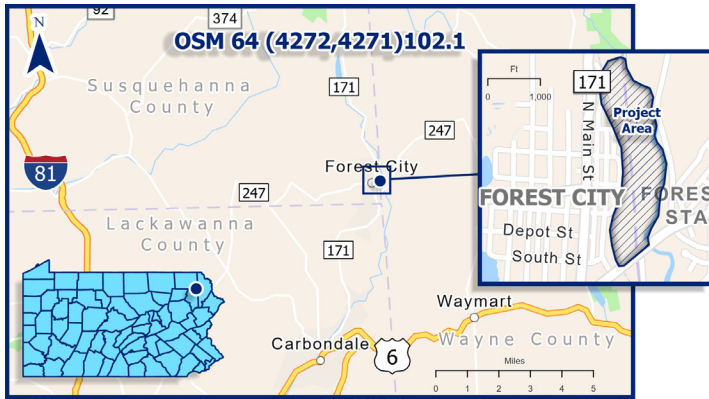


BUREAU OF ABANDONED MINE RECLAMATION



FOREST CITY EAST - PENNSYLVANIA FISH AND BOAT COMMISSION ACCESS

ABANDONED MINE RECLAMATION PROJECT
Office of Active and Abandoned Mine Operations

Purpose:

To eliminate a public health and safety hazard by removing dangerous piles and embankments on an abandoned mine site.

The Commonwealth of Pennsylvania designed a 55-acre Abandoned Mine Land (AML) reclamation project in Forest City Borough, Susquehanna County and Clinton Township, Wayne County. This site was extensively deep and surfaced mined for coal until the mid-1930s. This reclamation project eliminated a high-priority Dangerous Pile and Embankment (DPE) that endangered human health, safety, and general welfare. It also reduced the environmental degradation of the Lackawanna River. The project reclaimed 16.2 acres of DPE, 34.5 acres of Gob (GO) and one Hazardous Equipment and Facility (HEF).

Through an easement between the property owner and the Pennsylvania Fish and Boat Commission, shoreline access for fishing and a launch site for canoe and other small non-motorized craft into the Lackawanna River was constructed, which consists of an access trail/road with a parking area. Economic and community development components of the project met the criteria established by the 2018 Abandoned Mine Land Economic Revitalization (AMLER) Program Guidance for both Category A and Category B projects.

ACCOMPLISHMENT TABLE

Keyword	AMLF No.	Quantity (Count)	Priority	Acres
DPE	4272-01, 4272-03, 4271-01, 4271-03		Priority 2	16.2
GO	4272-02, 4272-04, 4271-02		Priority 3	34.5
HEF	4272-05	1	Priority 2	

AMLF = Abandoned Mine Land Feature

DPE = Dangerous Pile or Embankment

GO = Gob; HEF = Hazardous Equipment and Facility

Project at a Glance

Location:

The site is located along State Route 247, Forest City Borough, Susquehanna County and Clinton Township, Wayne County.

Watershed:

Lackawanna River, High Quality - Cold Water Fishery (HQ-CWF)

Project Period:

November 20, 2022 - April 3, 2024

Project Size:

55 Acres

Total Project Cost:

\$3,352,259.25

Funding:

Funding was made available through Pennsylvania's federal Abandoned Mine Land Reclamation Program, which is funded in part by the Abandoned Mine Land Economic Revitalization (AMLER) Program.

Contractor:

Earthmovers Unlimited Inc.

Property Owners:

Linde Corporation
Forest City Partnership, LLC
Rail Trail Council of Northeast Pennsylvania
Pennsylvania American Water Company
Forest City Borough

Project Management:

Bureau of Abandoned Mine Reclamation
Wilkes-Barre District Office

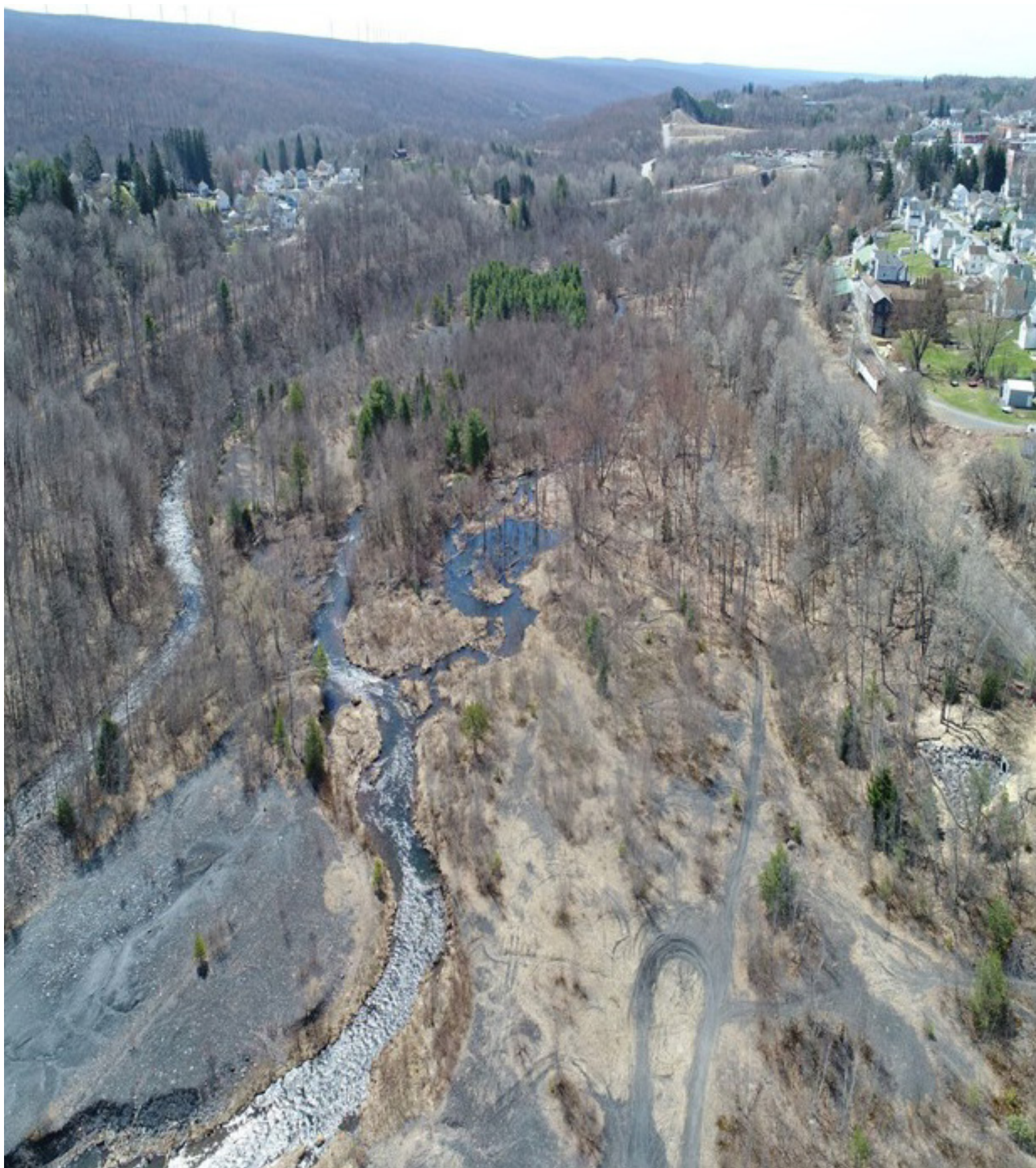


Pennsylvania
Department of
Environmental Protection

FOREST CITY EAST

PENNSYLVANIA FISH AND BOAT COMMISSION ACCESS

Pre-Construction



FOREST CITY EAST

PENNSYLVANIA FISH AND BOAT COMMISSION ACCESS

Pre-Construction



FOREST CITY EAST

PENNSYLVANIA FISH AND BOAT COMMISSION ACCESS

Construction



FOREST CITY EAST

PENNSYLVANIA FISH AND BOAT COMMISSION ACCESS

Construction



FOREST CITY EAST

PENNSYLVANIA FISH AND BOAT COMMISSION ACCESS

Post Construction

