



# pennsylvania

DEPARTMENT OF ENVIRONMENTAL PROTECTION

Office of Active and Abandoned Mine Operations

MURRAY SCHOOL EAST  
(FREDERICK STREET SUBSIDENCE)  
Abandoned Mine Reclamation  
Contract No. OSM 02(1582)102.1 ARBP

Bureau of Abandoned Mine Reclamation  
286 Industrial Park Road  
Ebensburg, PA 15931

**DEPARTMENT OF ENVIRONMENTAL PROTECTION  
ACTIVE AND ABANDONED MINE OPERATIONS  
BUREAU OF ABANDONED MINE RECLAMATION**

**MURRAY SCHOOL EAST (FREDERICK STREET SUBSIDENCE)  
ABANDONED MINE RECLAMATION  
CONTRACT NO. OSM 02(1582)102.1**

**FACT SHEET**

**Location:** Mt. Oliver Borough, Allegheny County

**Official Start Date:** July 24, 2013

**Contract Completion Date:** August 23, 2013

**Contractor:** Coastal Drilling East, LLC.

**Property Owners:**

Janet Ann Flaherty 123 Frederick Street Pittsburgh, PA 15210	Louis C. Georgevich 124 Frederick Street Pittsburgh, PA 15210
J. Michael Incorporated 71 Hartl Lane Pittsburgh, PA 15227-4121	Janet M. Schweitzer 126 Frederick Street Pittsburgh, PA 15210
Michael W. Flaherty 989 North Tequila Trail Benson, AZ 85602-7836	Anita L. Riley 418 Strope Road Burgettstown, PA 15021-9642
Andrew J. Denk 415 Carl Street Pittsburgh, PA 15210-2234	Maira J. Junejo 1985 Lincoln Way, Suite 23 McKeesport, PA 15131-2415
Jems Properties, LLC 563 South Braddock Avenue Pittsburgh, PA 15221-3216	Raymond Augustine 137 Frederick Street Pittsburgh, PA 15210
Anthony J., Jr. and Eileen A. Mazza 133 Frederick Street Pittsburgh, PA 15210	Rita S. Turowski Donna Marie Mester Alberta Rager (L/E) 138 Frederick Street Pittsburgh, PA 15210

**Project Cost:** \$492,607 (Final), \$1,350,283 (Bid Amount)

**Project Area:** 1.3 Acres

**Purpose:** To eliminate public health and safety concerns that have arisen when dangerous features such as these are located within close proximity to places of intense visitation of humans. One hundred twenty (120) inhabitable structures that promote intense public visitation are located within 500 feet of the project site. The

ground underneath twelve (12) structures presenting continued mine subsidence was stabilized eliminating the past subsidence event.

**Description:**

The scope of the Murray School East (Frederick Street Subsidence) Project was to reclaim Abandoned Mine Land Feature (AMLF) No. 1582-05 (S), a Priority 2 sag trough subsidence feature that measured approximately 1.3 acres over the Pittsburgh Coal Seam. A site visit by Bureau of Abandoned Mine Reclamation (BAMR) staff on July 13, 2013, found settling and damage to five homes along Frederick Street. An additional site visit by BAMR staff on July 15, 2013, verified the damage to the original five homes and discovered damage to an additional seven homes all along Frederick Street. The 12 property numbers are: 123, 124, 125, 126, 127, 129, 130, 131, 132, 133, 137 and 138. An Accelerated Response Bituminous Project (ARBP) to stabilize the 1.3 acres of a sag trough subsidence area underneath the 12 homes within Mt. Oliver Borough was performed. It was estimated that 4,000 cubic yards of grout material was needed. This project stabilized the ground underneath the homes by injecting a pre-mixed commercially available sand/cement grout material into the mine voids below the properties, which was delivered by approximately 500 ten cubic yard cement trucks. The grout was injected into the mine through boreholes drilled within the properties and within the Mt. Oliver Borough right-of-ways. AMLF No. 1585-05 (S), was a Priority 2 sag trough subsidence feature associated with deep mining performed by the Ivill Coal Company's Ivill Mine that ceased operation prior to 1922.

**Funding:**

This project was financed through Pennsylvania's Federal Abandoned Mine Land (AML) Grant funded by the coal industry via fees paid on each ton of coal mined.

**Project Management:**

Bureau of Abandoned Mine Reclamation  
Cambria District Office  
814.472.1800

**Accomplishments:**

PRIORITY	AMLF #	AMLF KEYWORD	MEASUREMENTS					QUANTITY	UNIT	
			ACRES	HEIGHT	LENGTH	COUNT	VOL.			FLOW
2	5	S	1.3	-	-	-	-	-	1.3	ACRES

Murray School East (Frederick Street Subsidence)  
OSM 02(1582)102.1 ARBP

Location Map



Murray School East (Frederick Street Subsidence)  
OSM 02(1582)102.1 ARBP  
Features: AMLF No. 1582-05 (S)  
Mount Oliver Borough  
Allegheny County



Murray School East (Frederick Street Subsidence)  
OSM 02(1582)102.1 ARBP

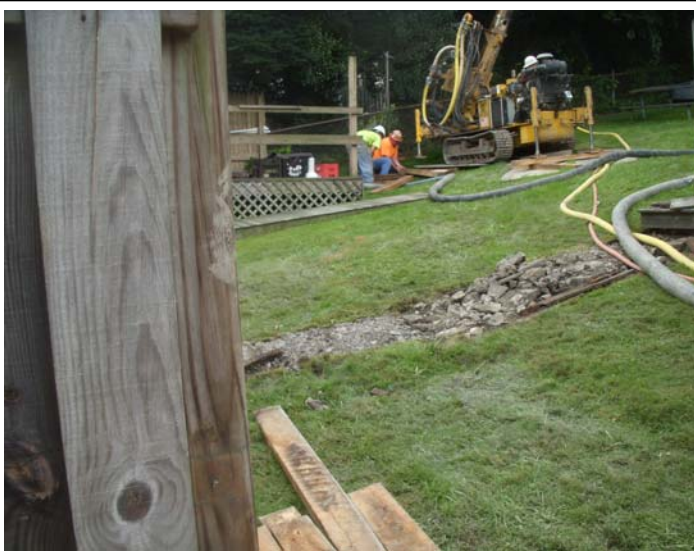
Pre-Construction





Murray School East (Frederick Street Subsidence)  
OSM 02(1582)102.1 ARBP

During Construction



Murray School East (Frederick Street Subsidence)  
OSM 02(1582)102.1 ARBP

Post-Construction

