



pennsylvania

DEPARTMENT OF ENVIRONMENTAL PROTECTION

Office of Active and Abandoned Mine Operations

SKIDMORE BED CROPFALL SUBSIDENCES

Abandoned Mine Reclamation Project

Contract No. OSM 22(0458)101.1 EMER

Bureau of Abandoned Mine Reclamation

2 Public Square, 5th Floor

Wilkes-Barre, PA 18701-1915

**DEPARTMENT OF ENVIRONMENTAL PROTECTION
OFFICE OF ACTIVE AND ABANDONED MINE OPERATIONS
BUREAU OF ABANDONED MINE RECLAMATION**

**SKIDMORE BED CROPFALL SUBSIDENCES
ABANDONED MINE RECLAMATION PROJECT
CONTRACT NO. OSM 22(0458)101.1 EMER**

FACT SHEET

Location: The project is located on Pennsylvania State Game Lands No. 264, Bear Valley Road, Williams Township, Dauphin County.

Watershed: West Branch Rausch Creek

Official Start Date: January 13, 2022

Contract Completion Date: February 7, 2022

Contractor: Morgan's Excavating, LLC of Mount Union, PA

Property Owner: Pennsylvania Game Commission

Project Cost: \$39,879.50 (Final Amount)
\$46,444.00 (Bid Amount)

Project Area: 0.5 acre

Purpose: To eliminate public health and safety hazards by backfilling two crop fall mine subsidences on PA State Game Lands.

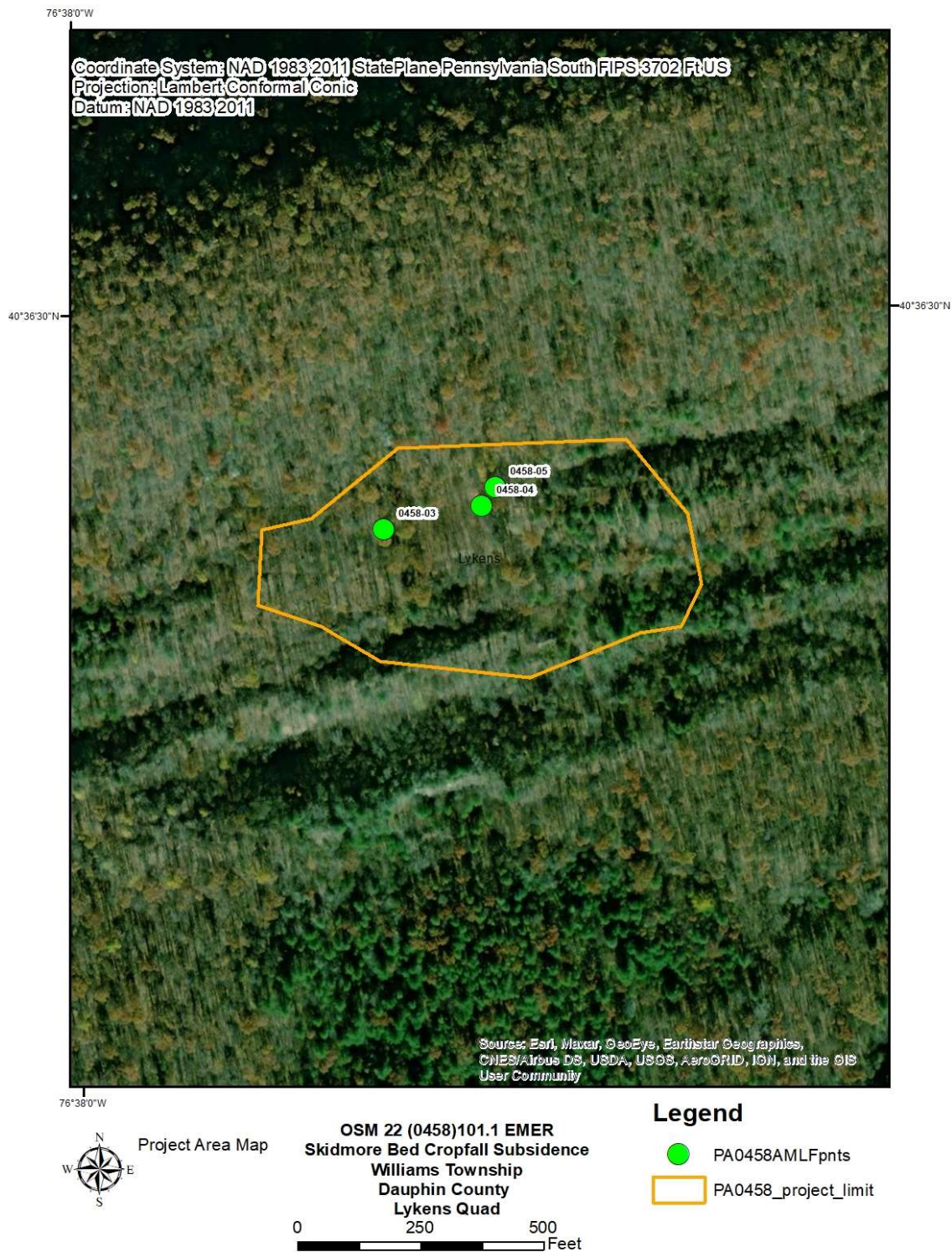
Description: Two mine subsidences on PA State Game Lands in Williams Township, Dauphin County were reclaimed as an emergency project. The openings measured approximately 30-35 feet in diameter. The project work consisted of establishing an access road to the openings, a work safety zone around the subsidences, installing erosion and sedimentation controls, clearing and grubbing and backfilling the subsidences. There were 0.3 acres of land cleared and grubbed and over 1,200 cubic yards of on-site material was used to fill the subsidences. The disturbed areas were then graded and seeded.

Funding: Abandoned Mine Land Program

Project Management: Bureau of Abandoned Mine Reclamation
Wilkes-Barre District Office
(Contact:570.826.2371)

SKIDMORE BED CROPFALL SUBSIDENCES CONTRACT NO.
OSM 22(0458)101.1 EMER

Location Map



SKIDMORE BED CROPPALL SUBSIDENCES CONTRACT NO.
OSM 22(0458)101.1 EMER

Pre-Construction



AMLF 0458-03 (VO): vertical opening measuring approximately 30 feet in diameter.



AMLF 0458-04 (VO): vertical opening measuring approximately 35 feet in diameter.

SKIDMORE BED CROPFALL SUBSIDENCES
CONTRACT NO. OSM 22(0458)101.1 EMER

During Construction



AMLF 0458-03 (VO) after being backfilled



AMLF 0458-04 (VO) after being backfilled

SKIDMORE BED CROPFALL SUBSIDENCES
CONTRACT NO. OSM 22(0458)101.1 EMER

Post Construction



AMLF 0458-03 (VO) after seeding



AMLF 0458-04 (VO) after seeding