



pennsylvania

DEPARTMENT OF ENVIRONMENTAL PROTECTION

Office of Active and Abandoned Mine Operations

JOFFRE

Abandoned Mine Reclamation

Contract No. OSM 63(0655)101.1

Bureau of Abandoned Mine Reclamation

286 Industrial Park Road

Ebensburg, PA 15931

DEPARTMENT OF ENVIRONMENTAL PROTECTION
ACTIVE AND ABANDONED MINE OPERATIONS
BUREAU OF ABANDONED MINE RECLAMATION

JOFFRE
ABANDONED MINE RECLAMATION
CONTRACT NO. OSM 63(0655)101.1

FACT SHEET

Location: Smith Township, Washington County.

Official Start Date: September 20, 2010

Contract Completion Date: August 2, 2011

Contractor: Graylan Corporation

Property Owners: Donald D. Zalaznik Jr.

Project Cost: \$150,731.81(Final Amount), \$149,889.83 (Bid Amount)

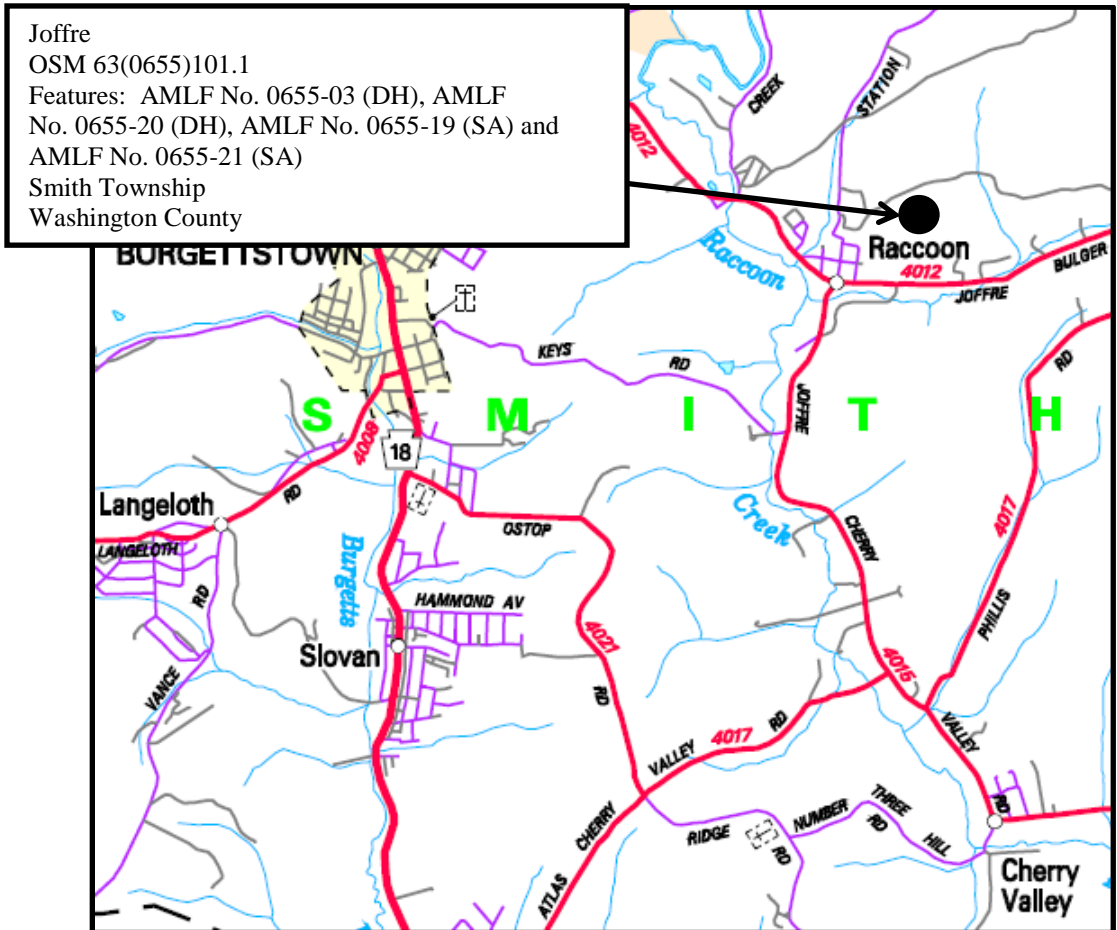
Project Area: 5.8 Acres

Purpose: To eliminate public health and safety hazards by backfilling and grading dangerous highwalls, pits and spoil areas.

Description: The Joffre project involves the reclamation of the following features: two (2) dangerous highwalls, AMLF No. 0655-03 (DH) and AMLF No. 0655-20 (DH), and two (2) adjacent spoil areas, AMLF No. 0655-19 (SA) and AMLF No. 0655-21 (SA). This project will consist of grading the available adjacent spoil material into the pits and returning the surface mine site to approximate original contour. This project will also include the draining and removal of two (2) water impoundments. The first impoundment is within AMLF No. 0655-03 (DH) which measures approximately 0.18 acres with poor water quality. The second impoundment is within AMLF No. 0655-20 (DH) which measures approximately 0.13 acres with poor water quality. Since each of the water impoundments combined measures less than one (1) acre and meets one of the poor water quality standards, the water impoundments qualify for the Title 25, Chapter 105, Category 1 Waiver. These features are located within Problem Area 0655 (PA 0655) located on the Clinton 7.5 Minute USGS Quadrangle Map. AMLF No. 0655-03 (DH) is a Priority 2 feature that is approximately 25 feet high and 325 feet long. The steepness of the dangerous highwall ranges from 60 degrees to nearly vertical. This project will permanently eliminate the dangerous highwall by backfilling in the highwall with the adjacent Priority 3 AMLF No. 0655-19 (SA). AMLF No. 0655-20 (DH) is a Priority 2 feature that is approximately 25 feet high and 270 feet long. The steepness of the dangerous highwall ranges from 60 degrees to nearly vertical. This project will permanently eliminate the dangerous highwall by backfilling in the highwall with the adjacent Priority 3 AMLF No. 0655-21 (SA). The abandoned features have been a direct result of the Leonard Sasso Mine which

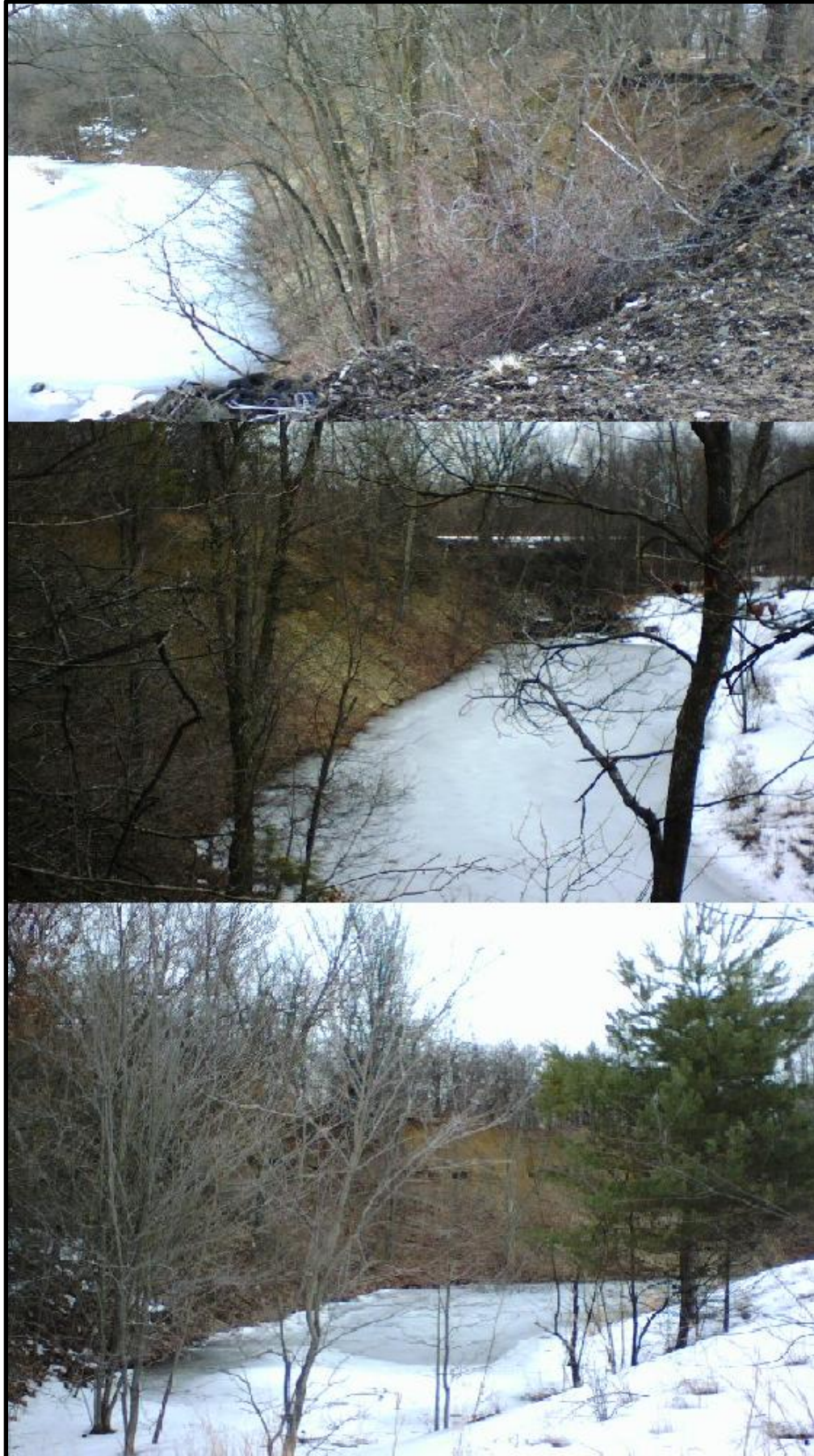
JOFFRE
OSM 63(0655)101.1

Project Location Map



JOFFRE
OSM 63(0655)101.1

Pre-Construction



JOFFRE
OSM 63(0655)101.1

During Construction



JOFFRE
OSM 63(0655)101.1

Post-Construction

