

LEGEND

- WETLAND TEST SITE
 - WETLAND
 - OPEN WATER
 - MINE PANEL
 - PERMIT BOUNDARY
 - 1,000 FT. BUFFER
 - PREVIOUSLY PERMITTED AREA
- SCALE IN FEET

0 300



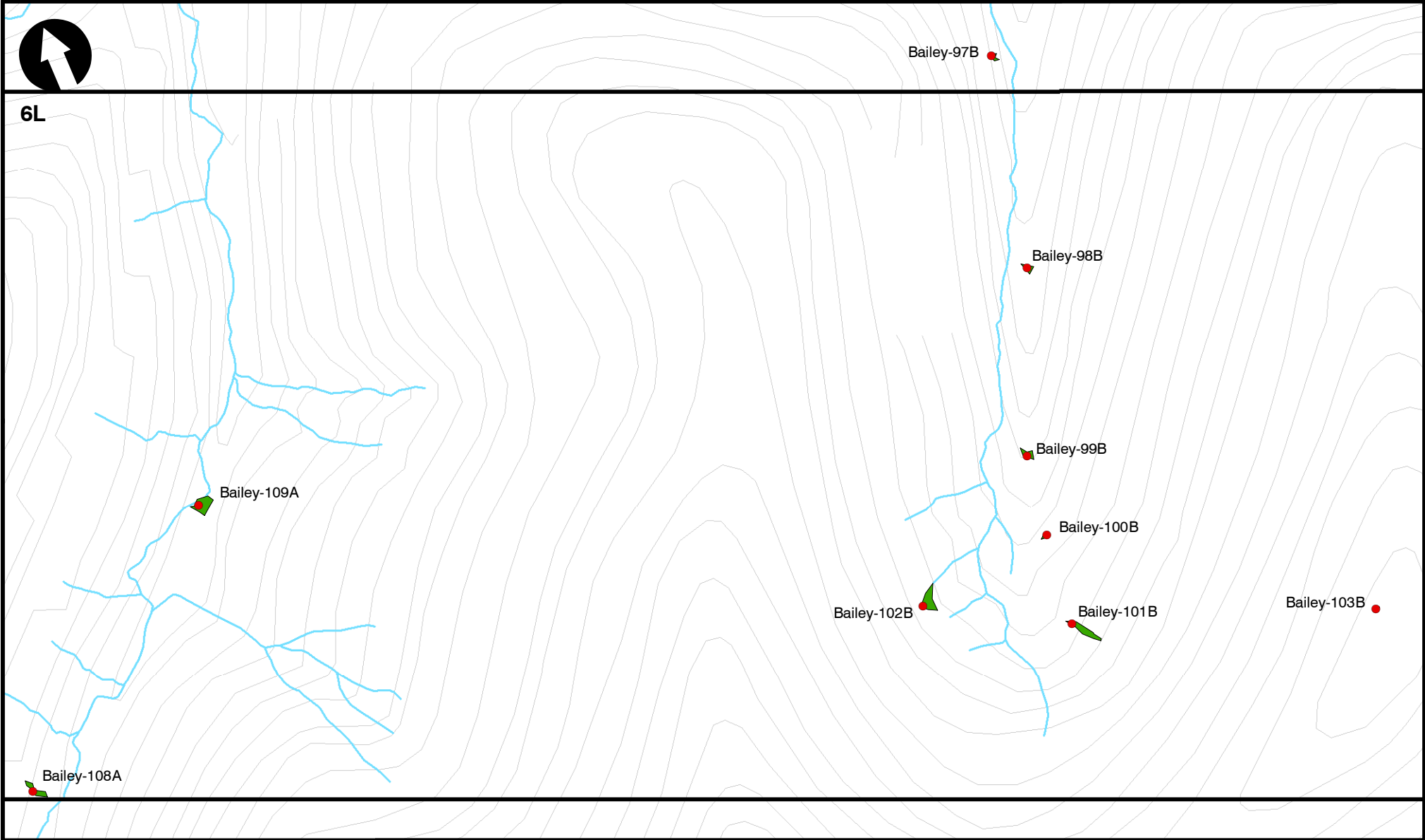
Civil & Environmental Consultants, Inc.

333 Baldwin Road - Pittsburgh, PA 15205-9072
 412-429-2324 • 800-365-2324
 www.cecinc.com

CONSOL PENNSYLVANIA COAL COMPANY LLC
 BAILEY MINE 6L - 8L PANEL EXPANSION
 GREENE COUNTY, PENNSYLVANIA

WETLAND DELINEATION LIMITS MAP

DRAWN BY:	CLC	CHECKED BY:	KLS	APPROVED BY: <small>* Hand signature on file</small>	MLS*	EXHIBIT NO:	8.12B
DATE:	6/27/2016	SCALE:	1" = 300'	PROJECT NO:	152-172		



LEGEND

- WETLAND TEST SITE
- WETLAND
- OPEN WATER
- MINE PANEL
- PERMIT BOUNDARY
- 1,000 FT. BUFFER
- PREVIOUSLY PERMITTED AREA

SCALE IN FEET

0 300

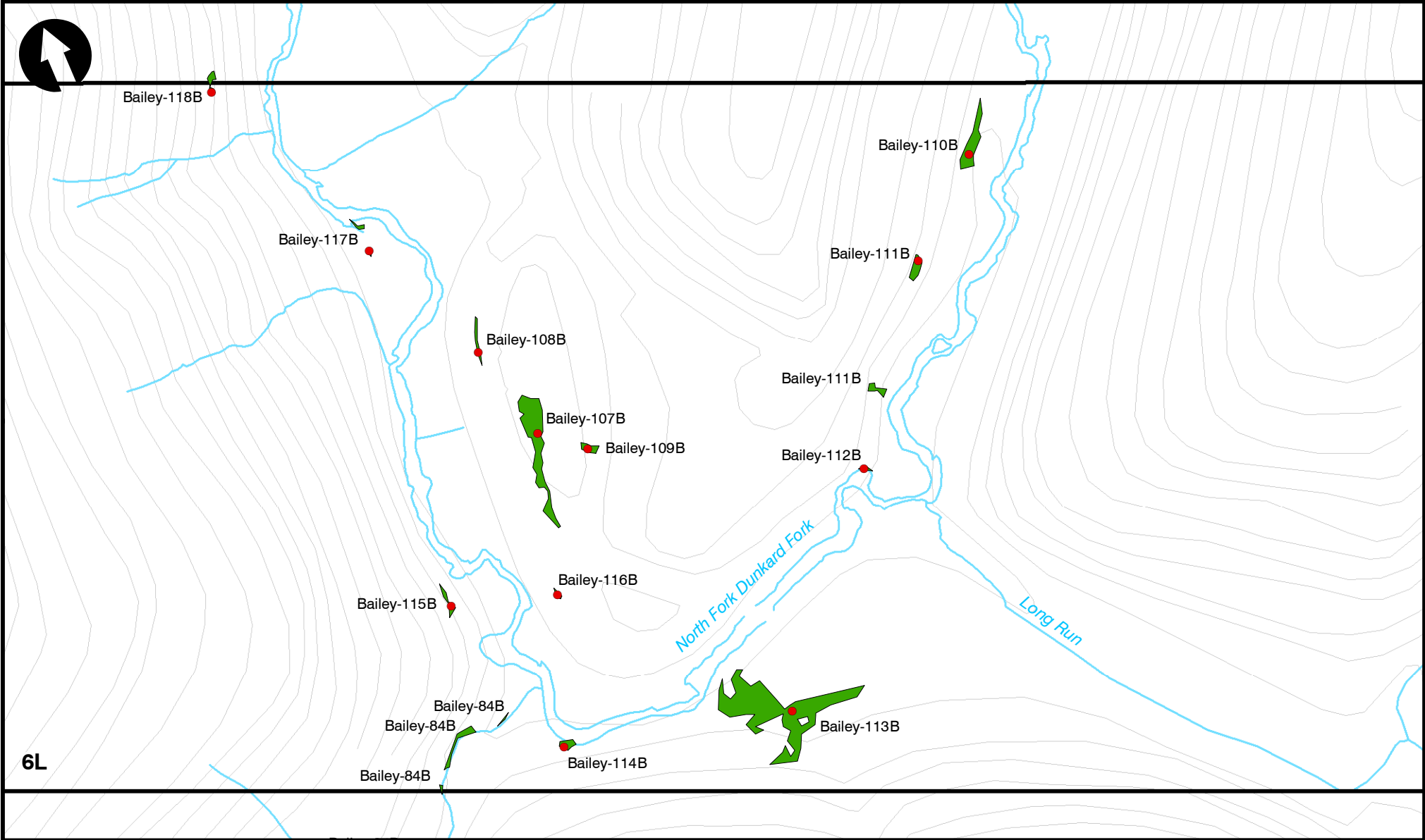
Civil & Environmental Consultants, Inc.
 333 Baldwin Road - Pittsburgh, PA 15205-9072
 412-429-2324 • 800-365-2324
 www.cecinc.com

CONSOL PENNSYLVANIA COAL COMPANY LLC
BAILEY MINE 6L - 8L PANEL EXPANSION
GREENE COUNTY, PENNSYLVANIA

WETLAND DELINEATION LIMITS MAP

DRAWN BY:	CLC	CHECKED BY:	KLS
DATE:	6/27/2016	SCALE:	1" = 300'

APPROVED BY: <small>* Hand signature on file</small>	MLS*	EXHIBIT NO:	8.12C
PROJECT NO:		152-172	



LEGEND

- WETLAND TEST SITE
- WETLAND
- OPEN WATER
- MINE PANEL
- PERMIT BOUNDARY
- 1,000 FT. BUFFER
- PREVIOUSLY PERMITTED AREA

SCALE IN FEET

0 300

Civil & Environmental Consultants, Inc.

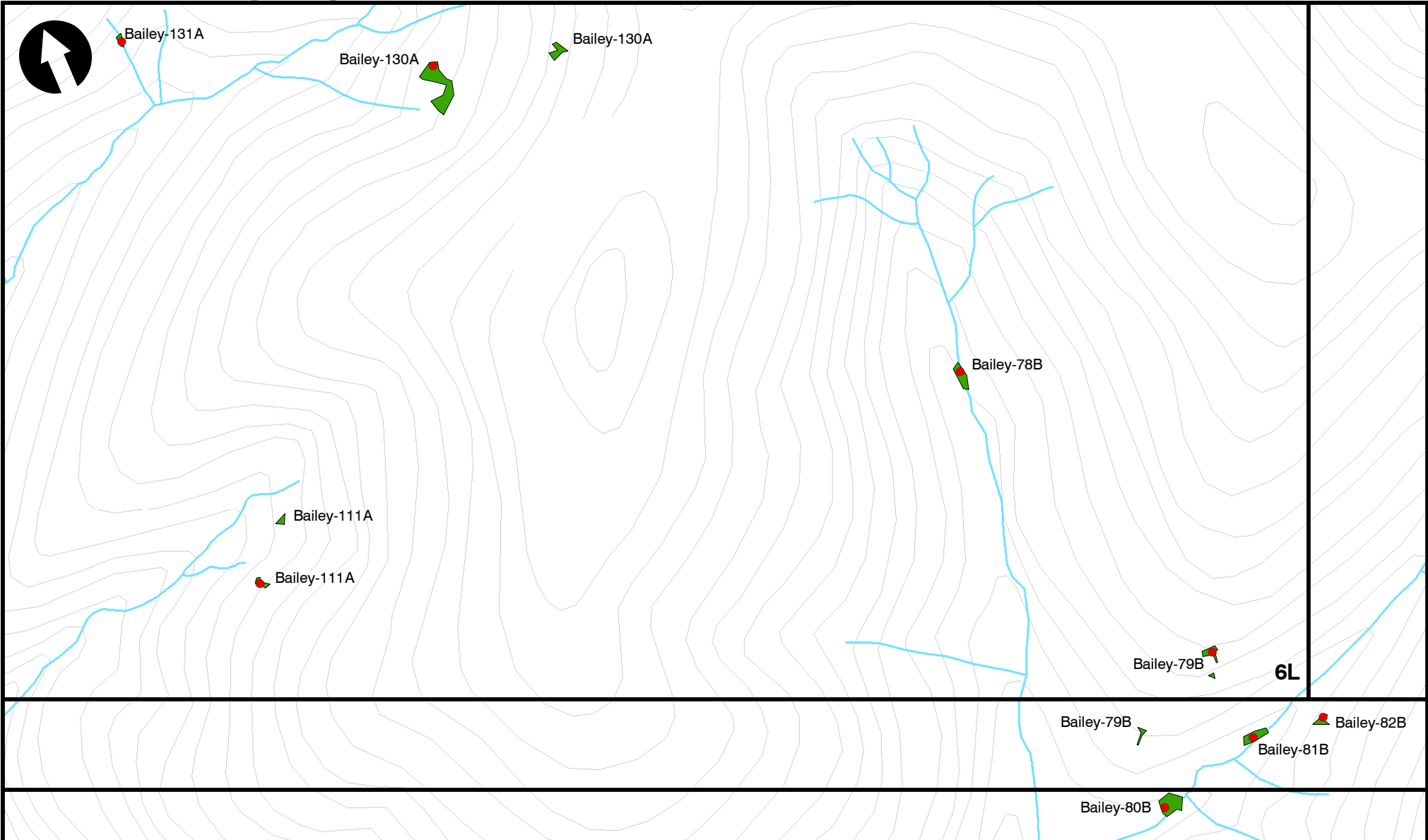
333 Baldwin Road - Pittsburgh, PA 15205-9072
 412-429-2324 • 800-365-2324
 www.cecinc.com

DRAWN BY:	CLC	CHECKED BY:	KLS
DATE:	6/27/2016	SCALE:	1" = 300'

CONSOL PENNSYLVANIA COAL COMPANY LLC
 BAILEY MINE 6L - 8L PANEL EXPANSION
 GREENE COUNTY, PENNSYLVANIA

WETLAND DELINEATION LIMITS MAP

APPROVED BY: <small>* Hand signature on file</small>	MLS*	EXHIBIT NO: 8.12D
PROJECT NO:	152-172	



LEGEND

- WETLAND TEST SITE
 - WETLAND
 - OPEN WATER
 - MINE PANEL
 - PERMIT BOUNDARY
 - 1,000 FT. BUFFER
 - PREVIOUSLY PERMITTED AREA
- SCALE IN FEET

0 300



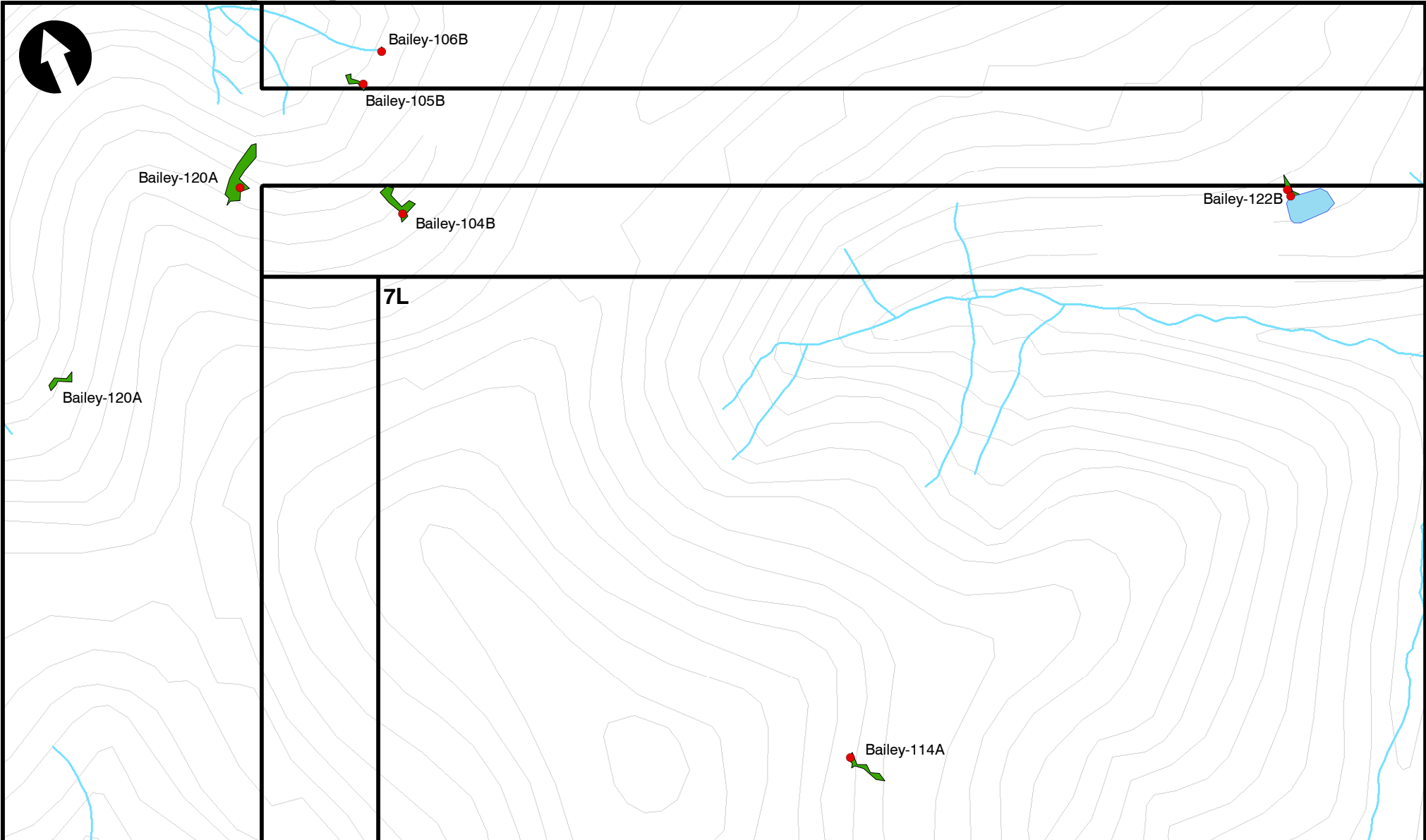
Civil & Environmental Consultants, Inc.

333 Baldwin Road - Pittsburgh, PA 15205-9072
 412-429-2324 • 800-365-2324
 www.cecinc.com

CONSOL PENNSYLVANIA COAL COMPANY LLC
 BAILEY MINE 6L - 8L PANEL EXPANSION
 GREENE COUNTY, PENNSYLVANIA

WETLAND DELINEATION LIMITS MAP

DRAWN BY:	CLC	CHECKED BY:	KLS	APPROVED BY: <small>* Hand signature on file</small>	MLS*	EXHIBIT NO:	8.12E
DATE:	6/27/2016	SCALE:	1" = 300'	PROJECT NO:	152-172		



LEGEND

- WETLAND TEST SITE
 - WETLAND
 - OPEN WATER
 - MINE PANEL
 - PERMIT BOUNDARY
 - 1,000 FT. BUFFER
 - PREVIOUSLY PERMITTED AREA
- SCALE IN FEET



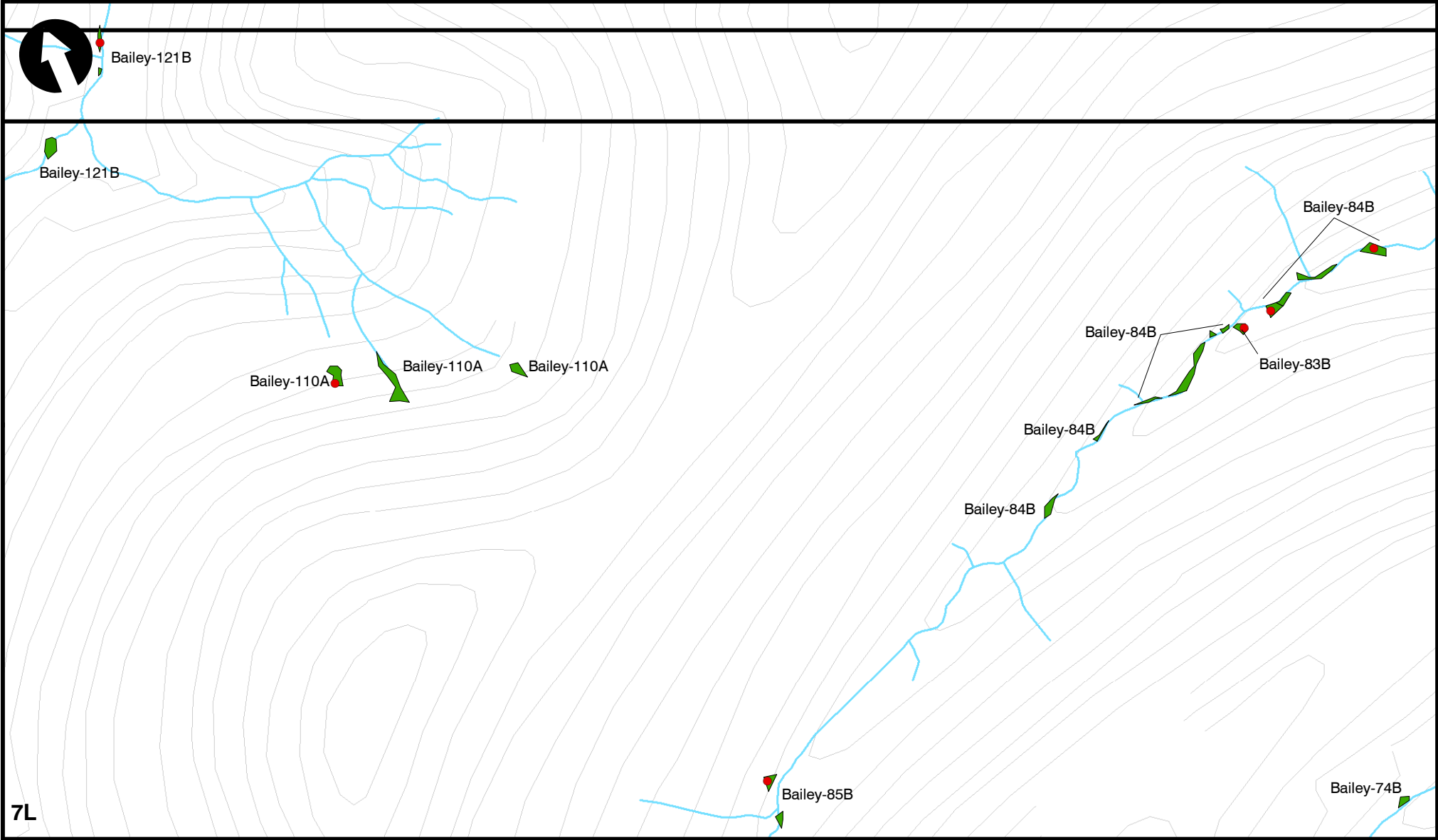
Civil & Environmental Consultants, Inc.

333 Baldwin Road - Pittsburgh, PA 15205-9072
 412-429-2324 • 800-365-2324
 www.cecinc.com

CONSOL PENNSYLVANIA COAL COMPANY LLC
 BAILEY MINE 6L - 8L PANEL EXPANSION
 GREENE COUNTY, PENNSYLVANIA

WETLAND DELINEATION LIMITS MAP

DRAWN BY:	CLC	CHECKED BY:	KLS	APPROVED BY: <small>* Hand signature on file</small>	MLS*	EXHIBIT NO:	8.12F
DATE:	6/27/2016	SCALE:	1" = 300'	PROJECT NO:	152-172		



7L

LEGEND

- WETLAND TEST SITE
- WETLAND
- OPEN WATER
- MINE PANEL
- PERMIT BOUNDARY
- 1,000 FT. BUFFER
- PREVIOUSLY PERMITTED AREA

SCALE IN FEET

0 300

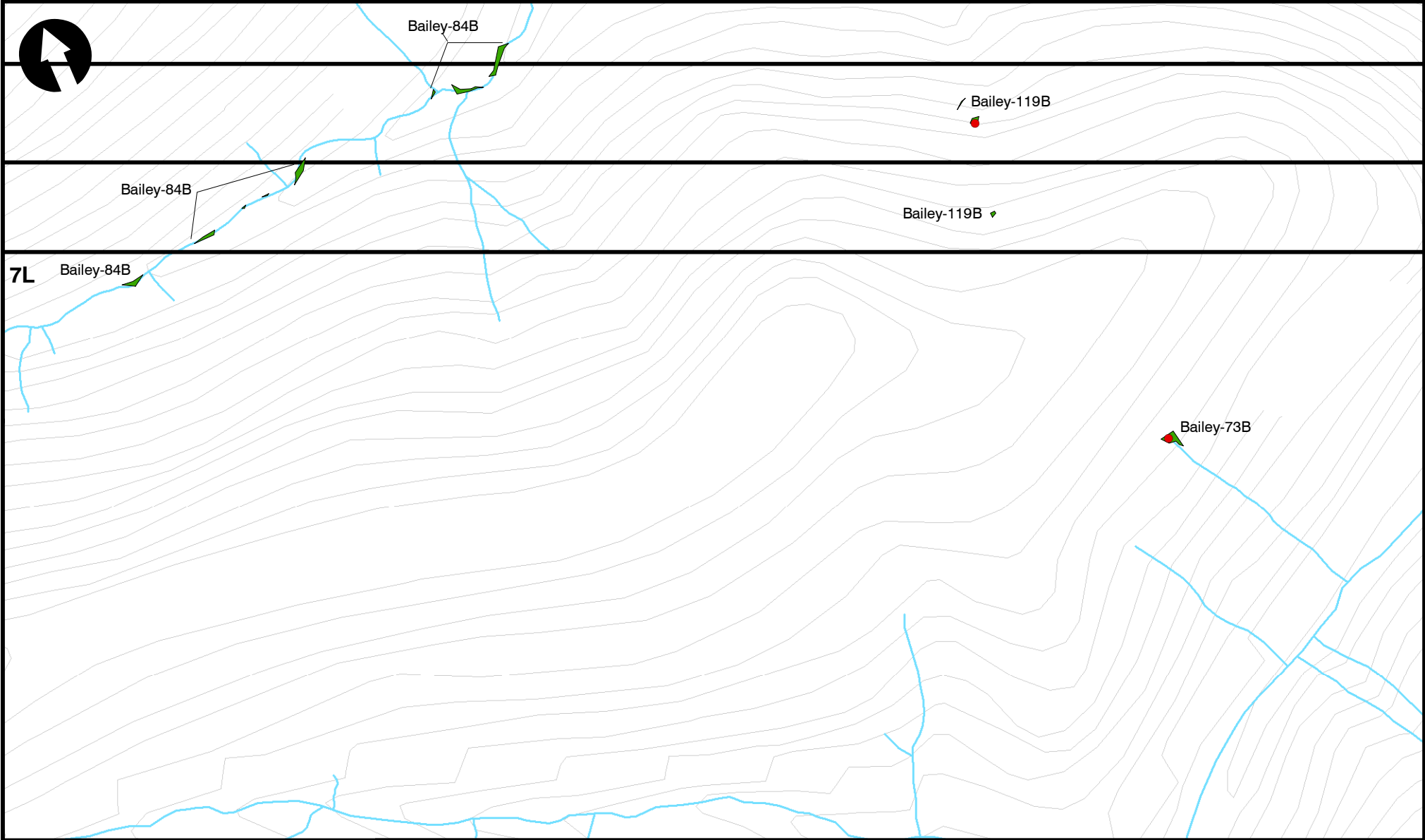


Civil & Environmental Consultants, Inc.
 333 Baldwin Road - Pittsburgh, PA 15205-9072
 412-429-2324 • 800-365-2324
 www.cecinc.com

CONSOL PENNSYLVANIA COAL COMPANY LLC
BAILEY MINE 6L - 8L PANEL EXPANSION
GREENE COUNTY, PENNSYLVANIA

WETLAND DELINEATION LIMITS MAP

DRAWN BY:	CLC	CHECKED BY:	KLS	APPROVED BY: <small>* Hand signature on file</small>	MLS*	EXHIBIT NO:	8.12G
DATE:	6/27/2016	SCALE:	1" = 300'	PROJECT NO:	152-172		



LEGEND

- WETLAND TEST SITE
- WETLAND
- OPEN WATER
- MINE PANEL
- PERMIT BOUNDARY
- 1,000 FT. BUFFER
- PREVIOUSLY PERMITTED AREA

SCALE IN FEET

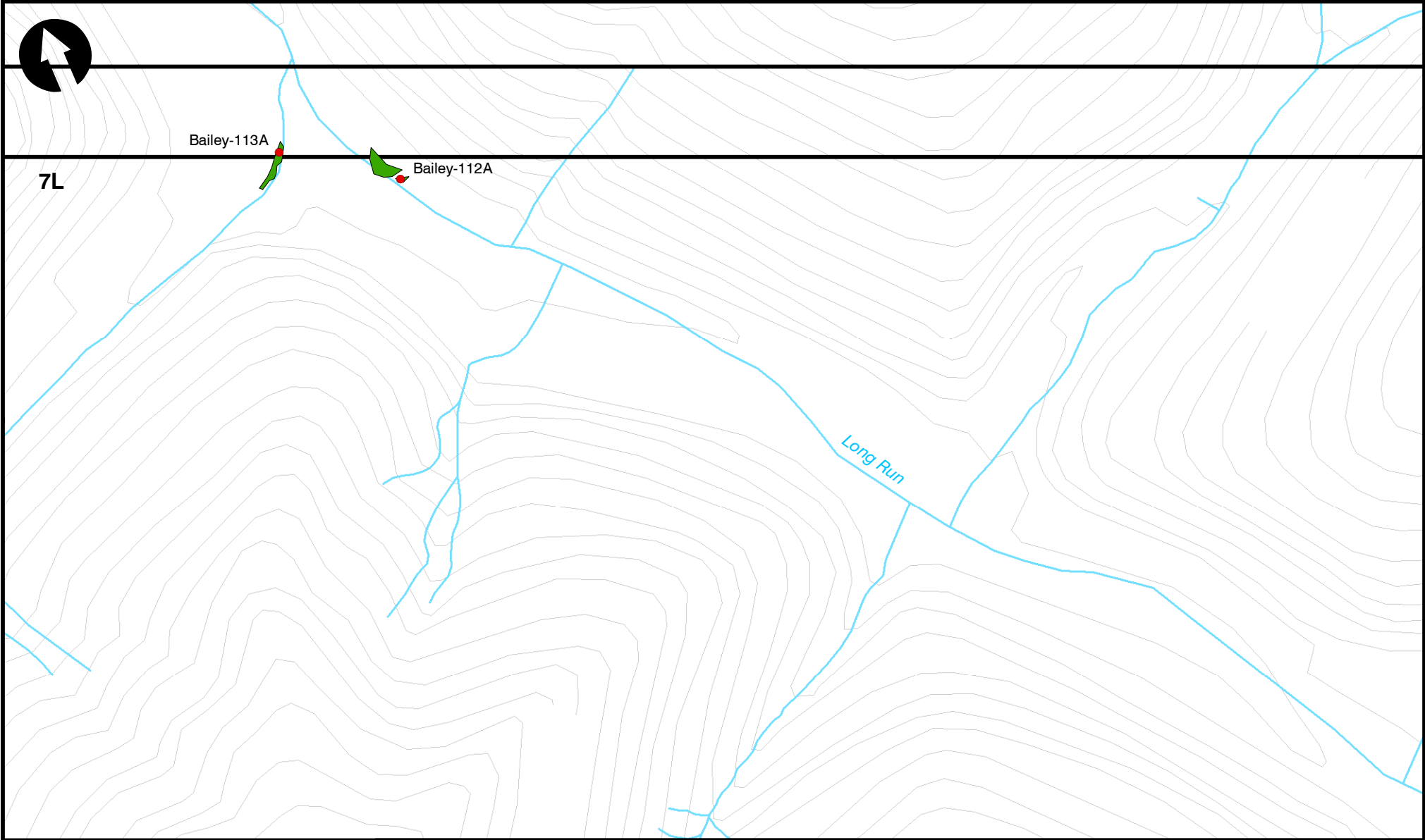
0 300

Civil & Environmental Consultants, Inc.
 333 Baldwin Road - Pittsburgh, PA 15205-9072
 412-429-2324 • 800-365-2324
 www.cecinc.com

CONSOL PENNSYLVANIA COAL COMPANY LLC
BAILEY MINE 6L - 8L PANEL EXPANSION
GREENE COUNTY, PENNSYLVANIA

WETLAND DELINEATION LIMITS MAP

DRAWN BY:	CLC	CHECKED BY:	KLS	APPROVED BY: <small>* Hand signature on file</small>	MLS*	EXHIBIT NO:	8.12H
DATE:	6/27/2016	SCALE:	1" = 300'	PROJECT NO:	152-172		



LEGEND

- WETLAND TEST SITE
- WETLAND
- OPEN WATER
- MINE PANEL
- PERMIT BOUNDARY
- 1,000 FT. BUFFER
- PREVIOUSLY PERMITTED AREA

SCALE IN FEET

0 300



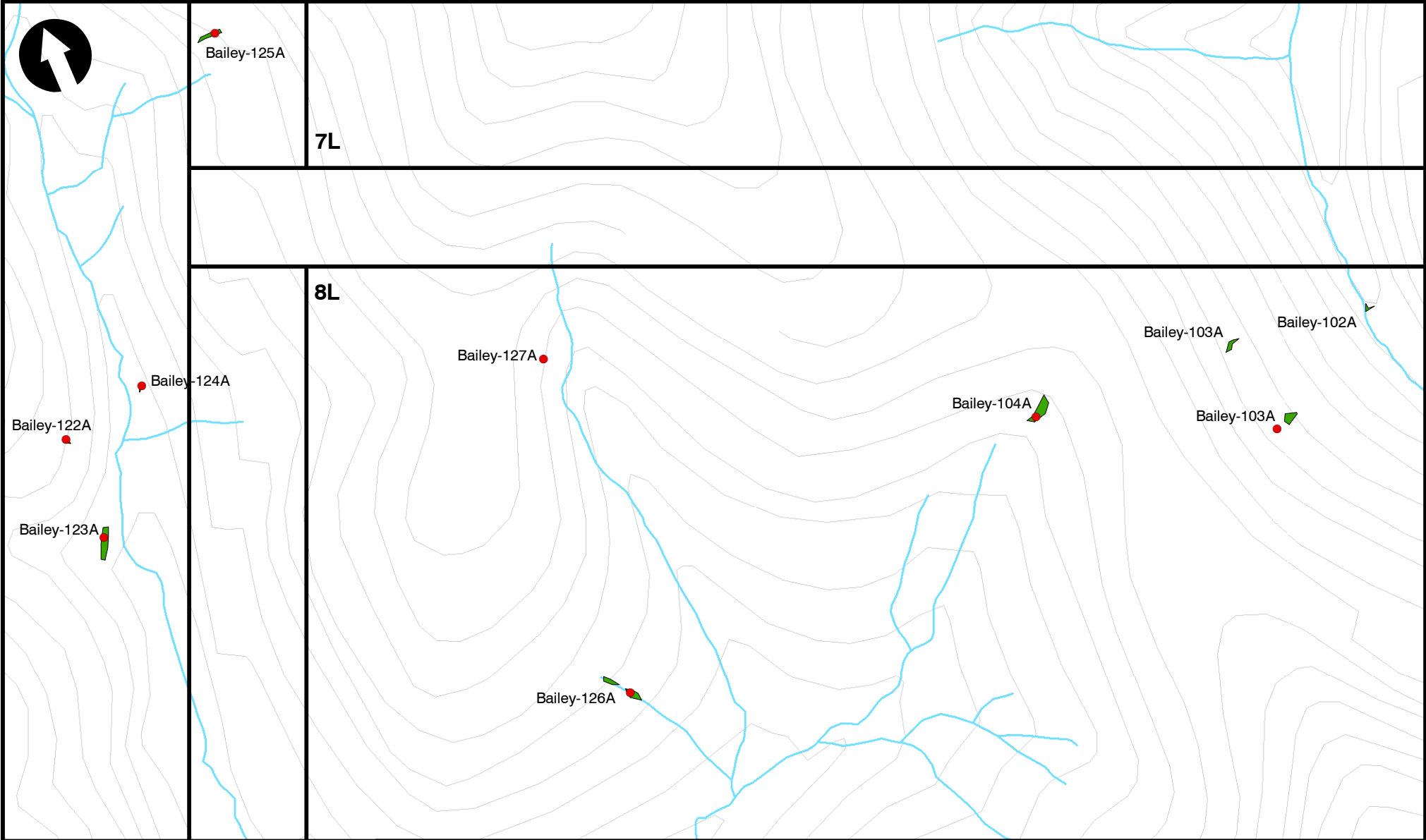
Civil & Environmental Consultants, Inc.
 333 Baldwin Road - Pittsburgh, PA 15205-9072
 412-429-2324 • 800-365-2324
 www.cecinc.com

DRAWN BY:	CLC	CHECKED BY:	KLS
DATE:	6/27/2016	SCALE:	1" = 300'

CONSOL PENNSYLVANIA COAL COMPANY LLC
 BAILEY MINE 6L - 8L PANEL EXPANSION
 GREENE COUNTY, PENNSYLVANIA

WETLAND DELINEATION LIMITS MAP

APPROVED BY: <small>* Hand signature on file</small>	MLS*	EXHIBIT NO: 8.121
PROJECT NO:	152-172	



LEGEND

- WETLAND TEST SITE
- WETLAND
- OPEN WATER
- MINE PANEL
- PERMIT BOUNDARY
- 1,000 FT. BUFFER
- PREVIOUSLY PERMITTED AREA

SCALE IN FEET

0 300

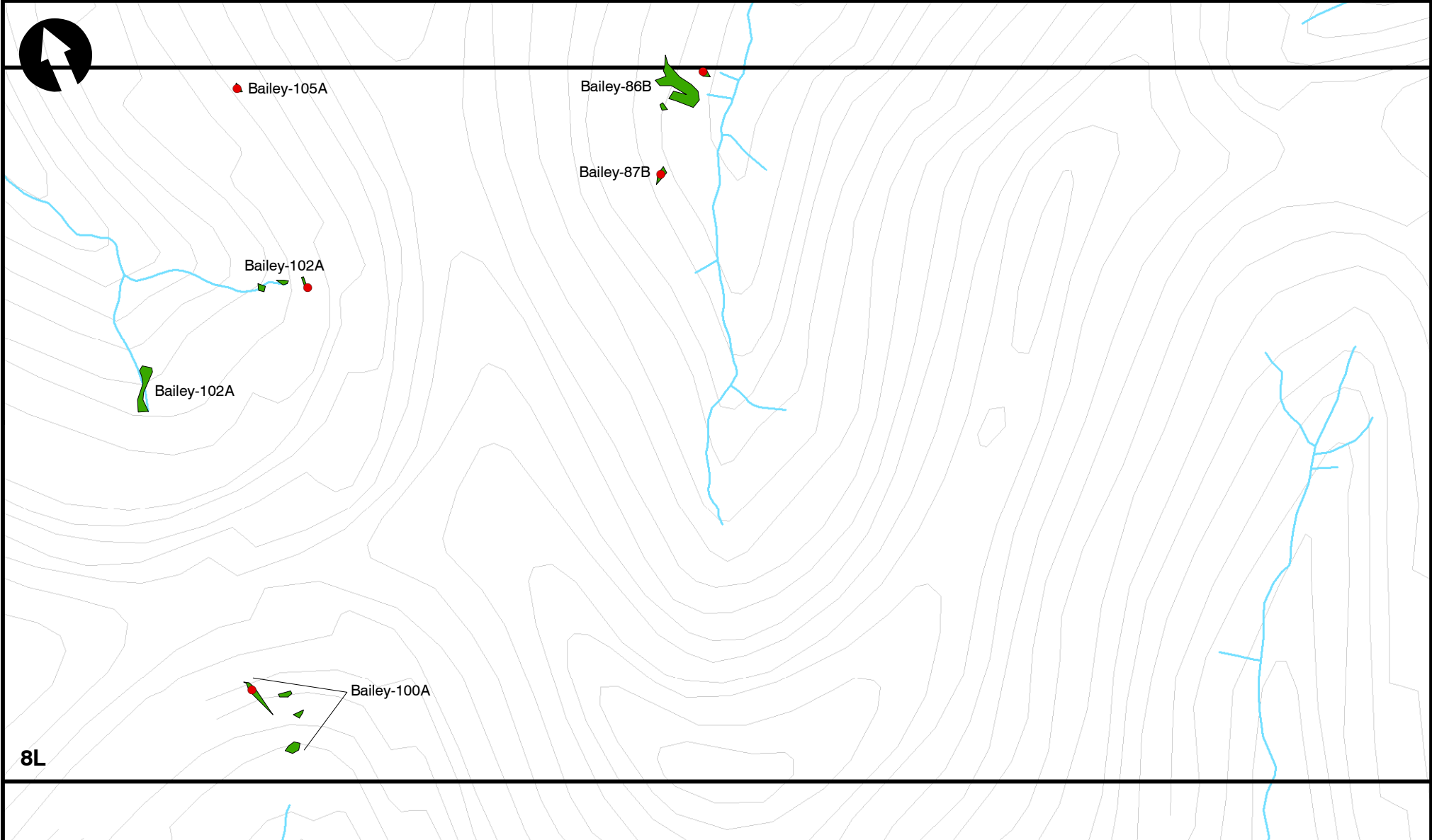


Civil & Environmental Consultants, Inc.
 333 Baldwin Road - Pittsburgh, PA 15205-9072
 412-429-2324 • 800-365-2324
 www.cecinc.com

CONSOL PENNSYLVANIA COAL COMPANY LLC
BAILEY MINE 6L - 8L PANEL EXPANSION
GREENE COUNTY, PENNSYLVANIA

WETLAND DELINEATION LIMITS MAP

DRAWN BY:	CLC	CHECKED BY:	KLS	APPROVED BY: <small>* Hand signature on file</small>	MLS*	EXHIBIT NO:	8.12J
DATE:	6/27/2016	SCALE:	1" = 300'	PROJECT NO:	152-172		



LEGEND

- WETLAND TEST SITE
- WETLAND
- OPEN WATER
- MINE PANEL
- PERMIT BOUNDARY
- 1,000 FT. BUFFER
- PREVIOUSLY PERMITTED AREA

SCALE IN FEET

0 300

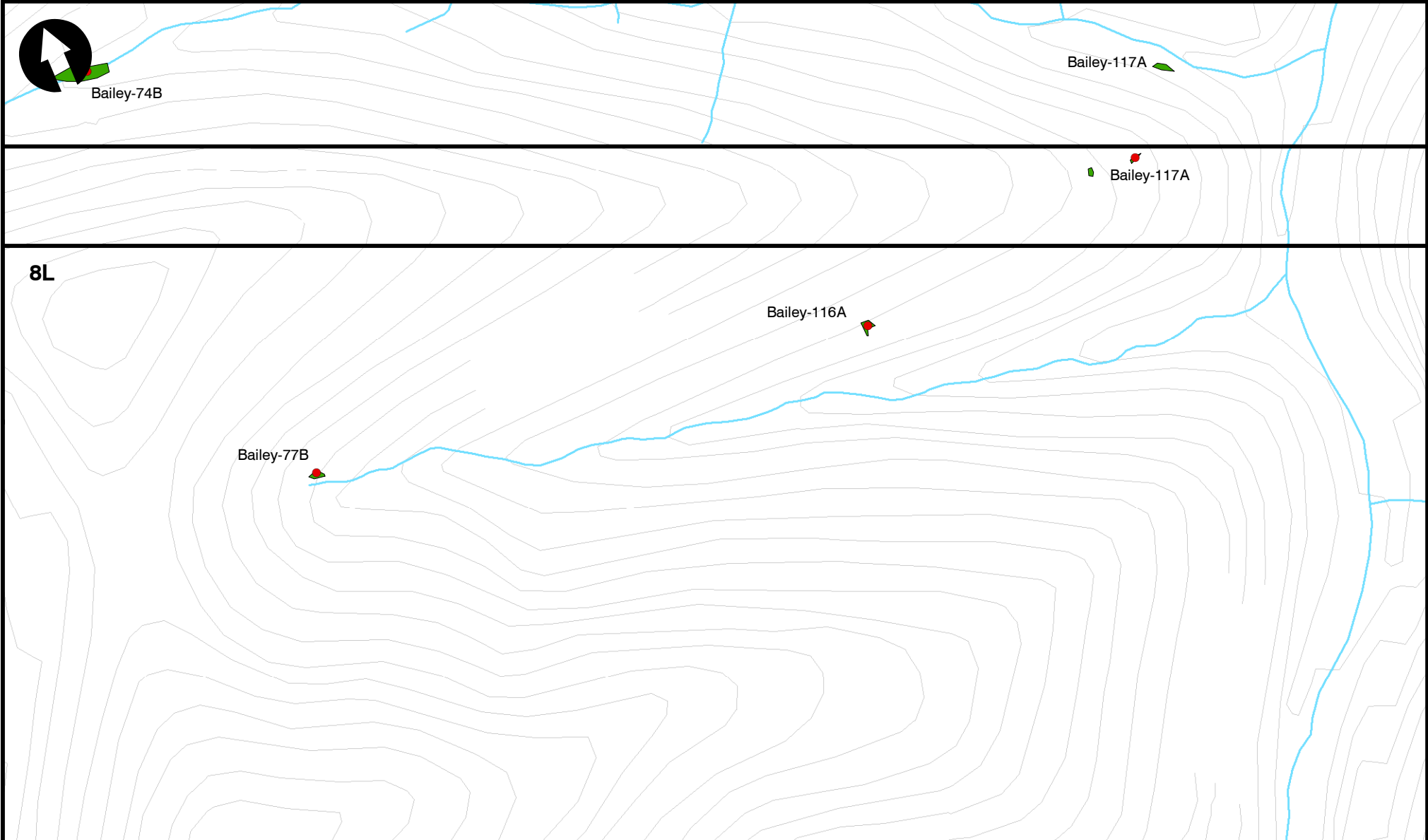
Civil & Environmental Consultants, Inc.
 333 Baldwin Road - Pittsburgh, PA 15205-9072
 412-429-2324 • 800-365-2324
www.cecinc.com

DRAWN BY:	CLC	CHECKED BY:	KLS
DATE:	6/27/2016	SCALE:	1" = 300'

CONSOL PENNSYLVANIA COAL COMPANY LLC
BAILEY MINE 6L - 8L PANEL EXPANSION
GREENE COUNTY, PENNSYLVANIA

WETLAND DELINEATION LIMITS MAP

APPROVED BY: <small>* Hand signature on file</small>	MLS*	EXHIBIT NO:
		8.12K



LEGEND

- WETLAND TEST SITE
 - WETLAND
 - OPEN WATER
 - MINE PANEL
 - PERMIT BOUNDARY
 - 1,000 FT. BUFFER
 - PREVIOUSLY PERMITTED AREA
- SCALE IN FEET

0 300



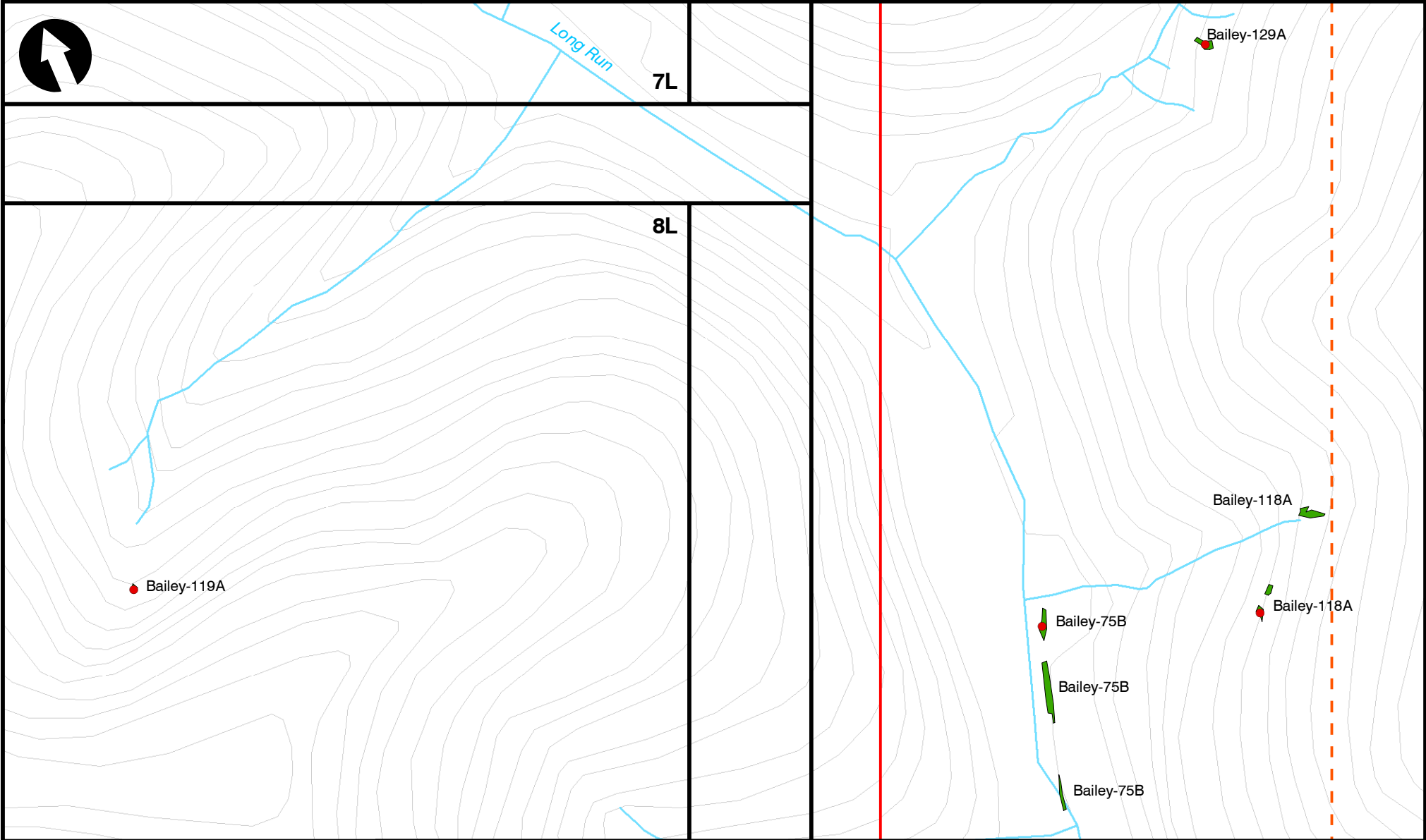
Civil & Environmental Consultants, Inc.

333 Baldwin Road - Pittsburgh, PA 15205-9072
 412-429-2324 • 800-365-2324
 www.cecinc.com

CONSOL PENNSYLVANIA COAL COMPANY LLC
 BAILEY MINE 6L - 8L PANEL EXPANSION
 GREENE COUNTY, PENNSYLVANIA

WETLAND DELINEATION LIMITS MAP

DRAWN BY: CLC	CHECKED BY: KLS	APPROVED BY: <small>* Hand signature on file</small> MLS*	EXHIBIT NO: 8.12L
DATE: 6/27/2016	SCALE: 1" = 300'	PROJECT NO: 152-172	



LEGEND

- WETLAND TEST SITE
- WETLAND
- OPEN WATER
- MINE PANEL
- PERMIT BOUNDARY
- 1,000 FT. BUFFER
- PREVIOUSLY PERMITTED AREA

SCALE IN FEET

0 300

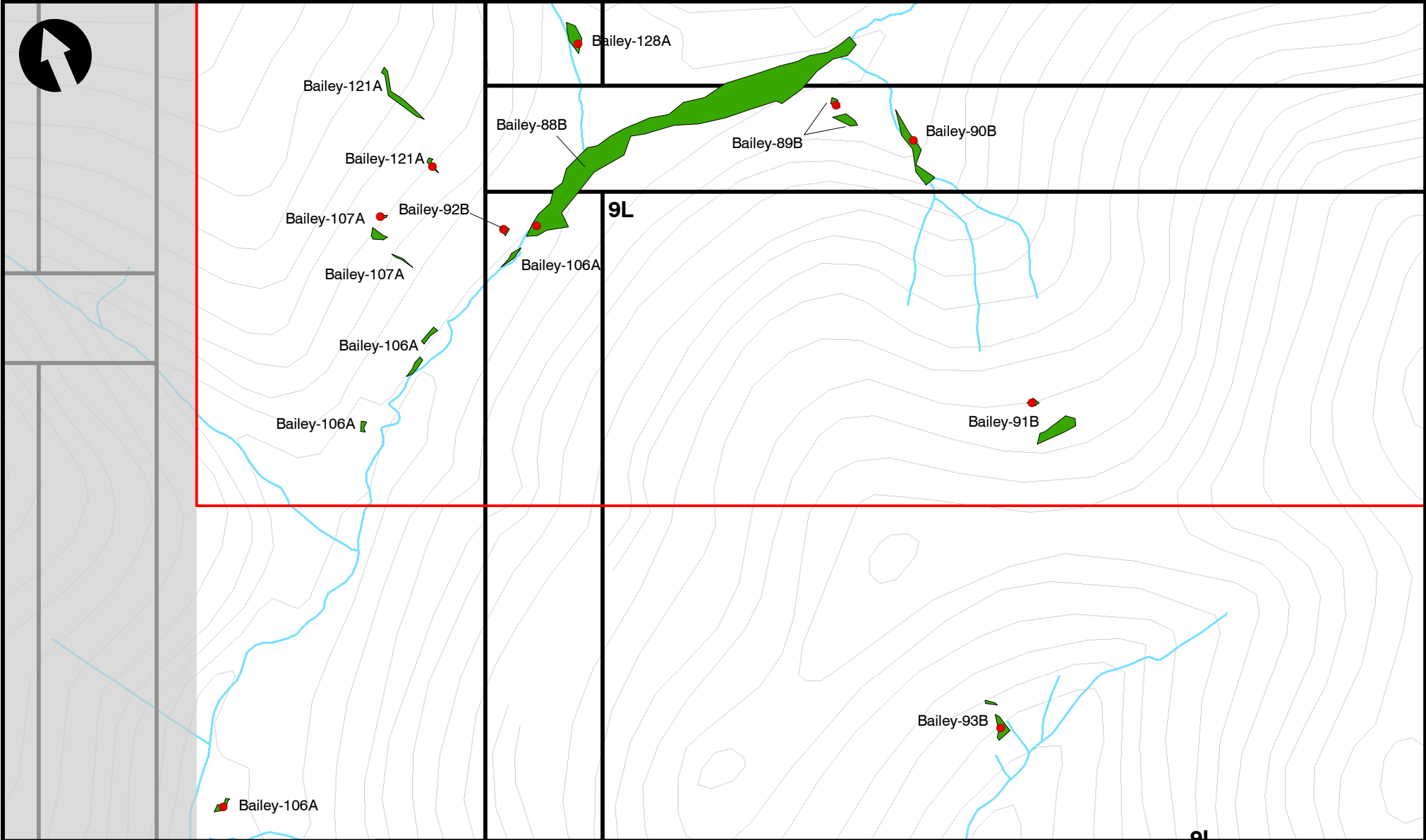


Civil & Environmental Consultants, Inc.
 333 Baldwin Road - Pittsburgh, PA 15205-9072
 412-429-2324 • 800-365-2324
 www.cecinc.com

CONSOL PENNSYLVANIA COAL COMPANY LLC
BAILEY MINE 6L - 8L PANEL EXPANSION
GREENE COUNTY, PENNSYLVANIA

WETLAND DELINEATION LIMITS MAP

DRAWN BY:	CLC	CHECKED BY:	KLS	APPROVED BY: <small>* Hand signature on file</small>	MLS*	EXHIBIT NO:	8.12M
DATE:	6/27/2016	SCALE:	1" = 300'	PROJECT NO:	152-172		



LEGEND

- WETLAND TEST SITE
- WETLAND
- OPEN WATER
- MINE PANEL
- PERMIT BOUNDARY
- 1,000 FT. BUFFER
- PREVIOUSLY PERMITTED AREA

SCALE IN FEET

0 300

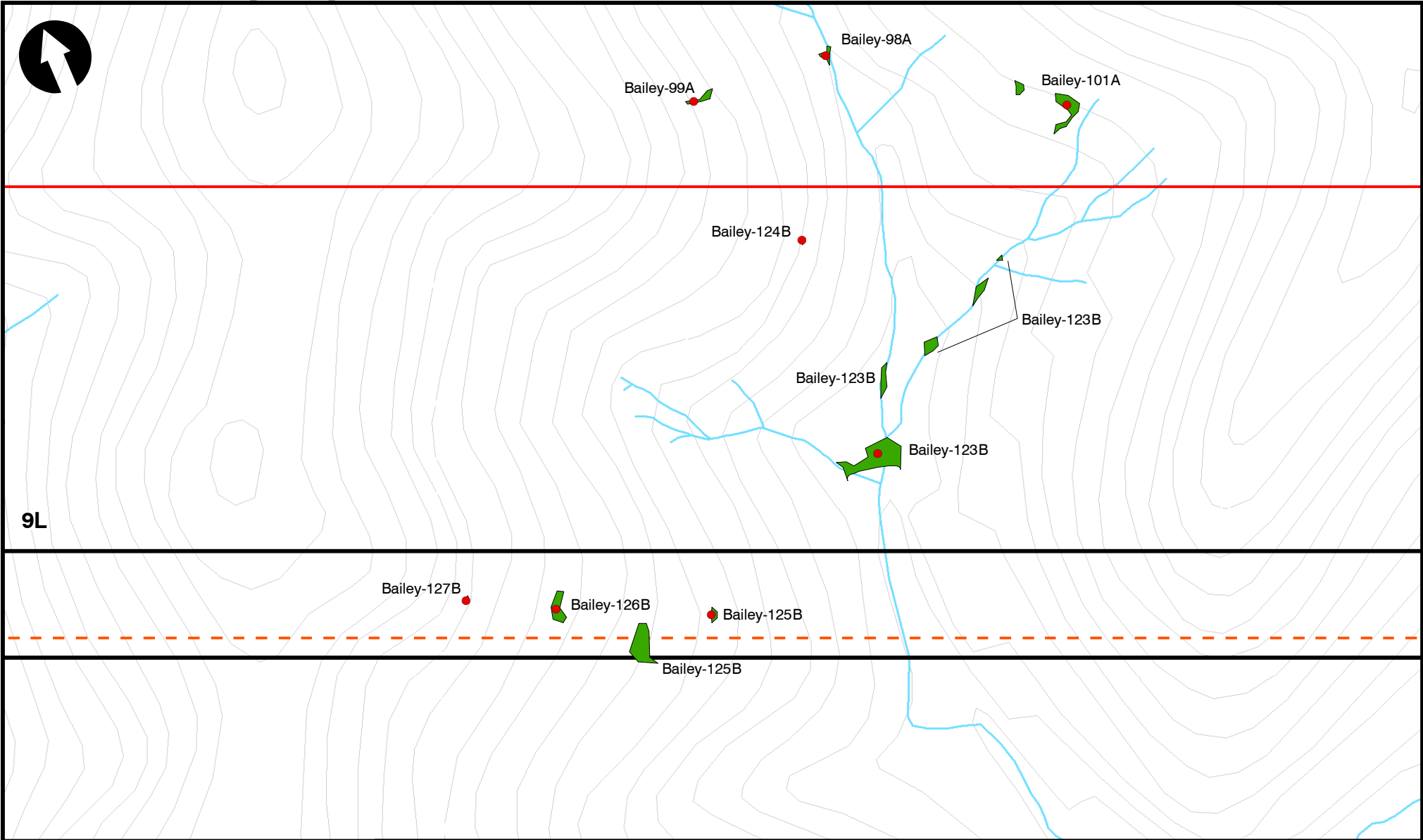


Civil & Environmental Consultants, Inc.
 333 Baldwin Road - Pittsburgh, PA 15205-9072
 412-429-2324 • 800-365-2324
 www.cecinc.com

CONSOL PENNSYLVANIA COAL COMPANY LLC
BAILEY MINE 6L - 8L PANEL EXPANSION
GREENE COUNTY, PENNSYLVANIA

WETLAND DELINEATION LIMITS MAP

DRAWN BY:	CLC	CHECKED BY:	KLS	APPROVED BY: <small>* Hand signature on file</small>	MLS*	EXHIBIT NO:	8.12N
DATE:	6/27/2016	SCALE:	1" = 300'	PROJECT NO:	152-172		



LEGEND

- WETLAND TEST SITE
 - WETLAND
 - OPEN WATER
 - MINE PANEL
 - PERMIT BOUNDARY
 - 1,000 FT. BUFFER
 - PREVIOUSLY PERMITTED AREA
- SCALE IN FEET

0 300



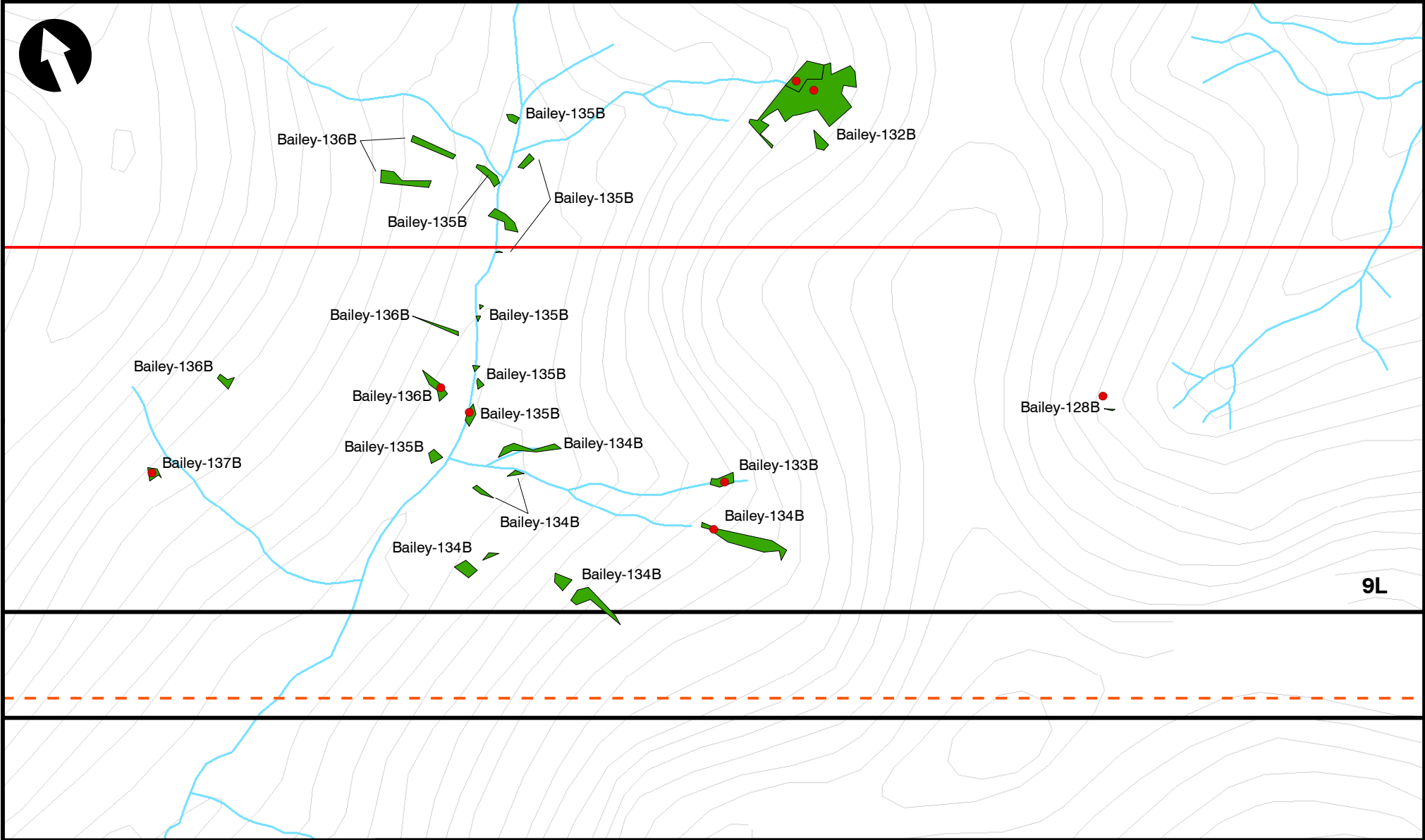
Civil & Environmental Consultants, Inc.

333 Baldwin Road - Pittsburgh, PA 15205-9072
 412-429-2324 • 800-365-2324
 www.cecinc.com

CONSOL PENNSYLVANIA COAL COMPANY LLC
 BAILEY MINE 6L - 8L PANEL EXPANSION
 GREENE COUNTY, PENNSYLVANIA

WETLAND DELINEATION LIMITS MAP

DRAWN BY:	CLC	CHECKED BY:	KLS	APPROVED BY: <small>* Hand signature on file</small>	MLS*	EXHIBIT NO:	8.120
DATE:	6/27/2016	SCALE:	1" = 300'	PROJECT NO:	152-172		



LEGEND

- WETLAND TEST SITE
- WETLAND
- OPEN WATER
- MINE PANEL
- PERMIT BOUNDARY
- 1,000 FT. BUFFER
- PREVIOUSLY PERMITTED AREA

SCALE IN FEET

0 300

Civil & Environmental Consultants, Inc.

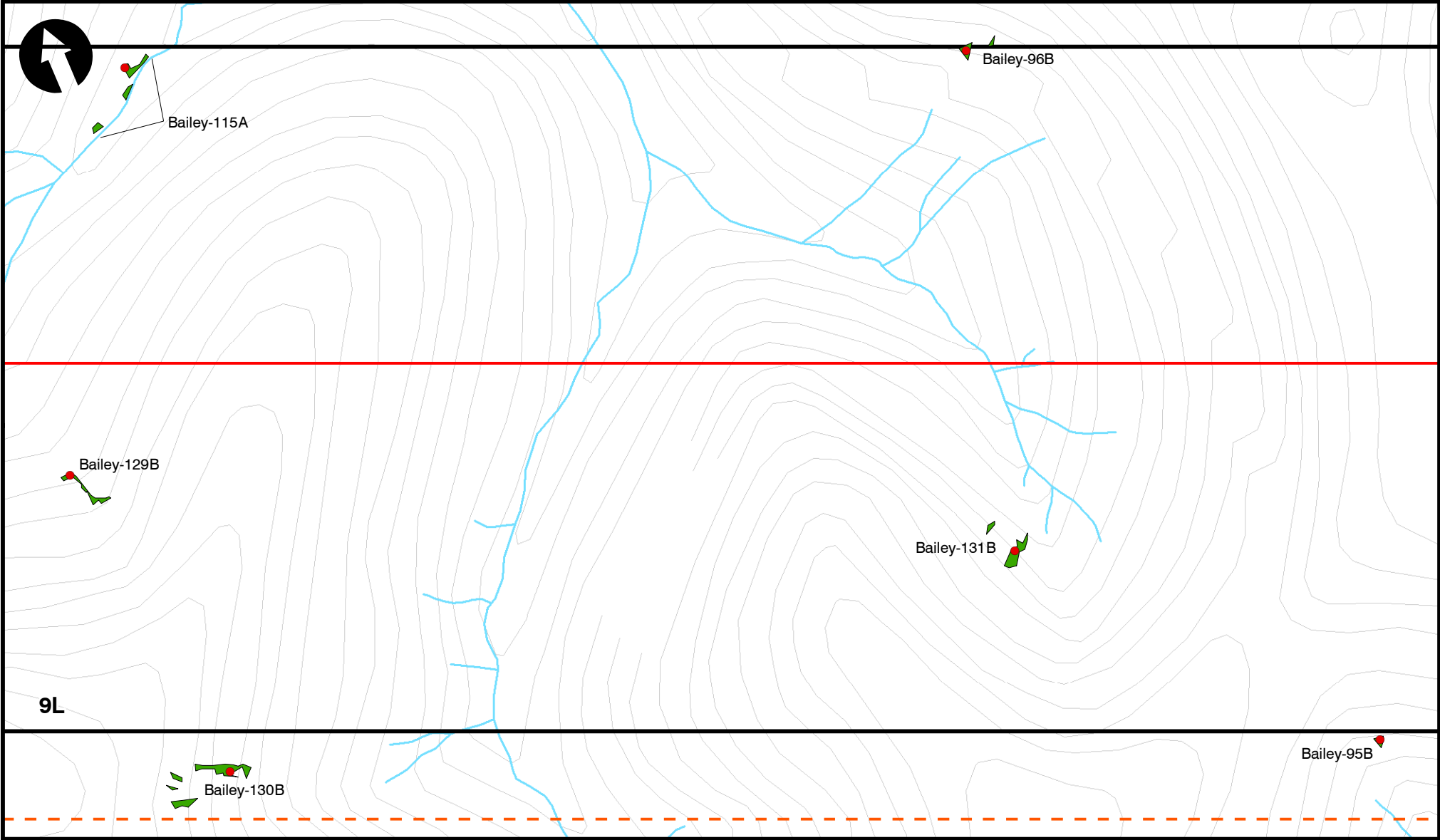
333 Baldwin Road - Pittsburgh, PA 15205-9072
 412-429-2324 • 800-365-2324
www.cecinc.com

DRAWN BY:	CLC	CHECKED BY:	KLS
DATE:	6/27/2016	SCALE:	1" = 300'

CONSOL PENNSYLVANIA COAL COMPANY LLC
 BAILEY MINE 6L - 8L PANEL EXPANSION
 GREENE COUNTY, PENNSYLVANIA

WETLAND DELINEATION LIMITS MAP

APPROVED BY: <small>* Hand signature on file</small>	MLS*	EXHIBIT NO: 8.12P
PROJECT NO: 152-172		



LEGEND

- WETLAND TEST SITE
 - WETLAND
 - OPEN WATER
 - MINE PANEL
 - PERMIT BOUNDARY
 - 1,000 FT. BUFFER
 - PREVIOUSLY PERMITTED AREA
- SCALE IN FEET

0 300



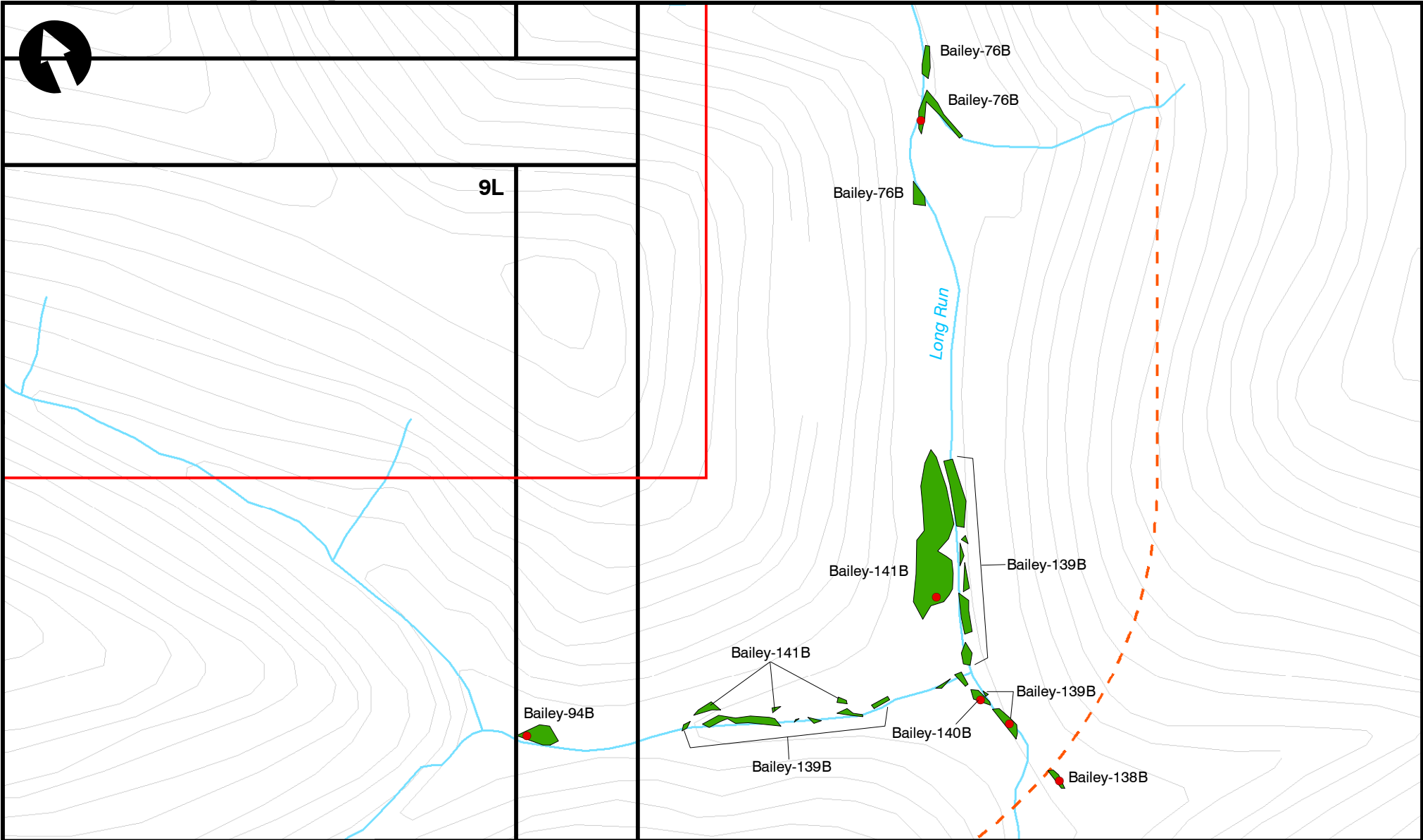
Civil & Environmental Consultants, Inc.

333 Baldwin Road - Pittsburgh, PA 15205-9072
 412-429-2324 • 800-365-2324
 www.cecinc.com

CONSOL PENNSYLVANIA COAL COMPANY LLC
 BAILEY MINE 6L - 8L PANEL EXPANSION
 GREENE COUNTY, PENNSYLVANIA

WETLAND DELINEATION LIMITS MAP

DRAWN BY:	CLC	CHECKED BY:	KLS	APPROVED BY: <small>* Hand signature on file</small>	MLS*	EXHIBIT NO:	8.12Q
DATE:	6/27/2016	SCALE:	1" = 300'	PROJECT NO:	152-172		



LEGEND

- WETLAND TEST SITE
- WETLAND
- OPEN WATER
- MINE PANEL
- PERMIT BOUNDARY
- 1,000 FT. BUFFER
- PREVIOUSLY PERMITTED AREA

SCALE IN FEET

0 300



Civil & Environmental Consultants, Inc.
 333 Baldwin Road - Pittsburgh, PA 15205-9072
 412-429-2324 • 800-365-2324
 www.cecinc.com

**CONSOL PENNSYLVANIA COAL COMPANY LLC
 BAILEY MINE 6L - 8L PANEL EXPANSION
 GREENE COUNTY, PENNSYLVANIA**

WETLAND DELINEATION LIMITS MAP

DRAWN BY:	CLC	CHECKED BY:	KLS	APPROVED BY: <small>* Hand signature on file</small>	MLS*	EXHIBIT NO:	8.12R
DATE:	6/27/2016	SCALE:	1" = 300'	PROJECT NO:	152-172		