



**pennsylvania**  
DEPARTMENT OF ENVIRONMENTAL PROTECTION



Bureau of Mining Programs

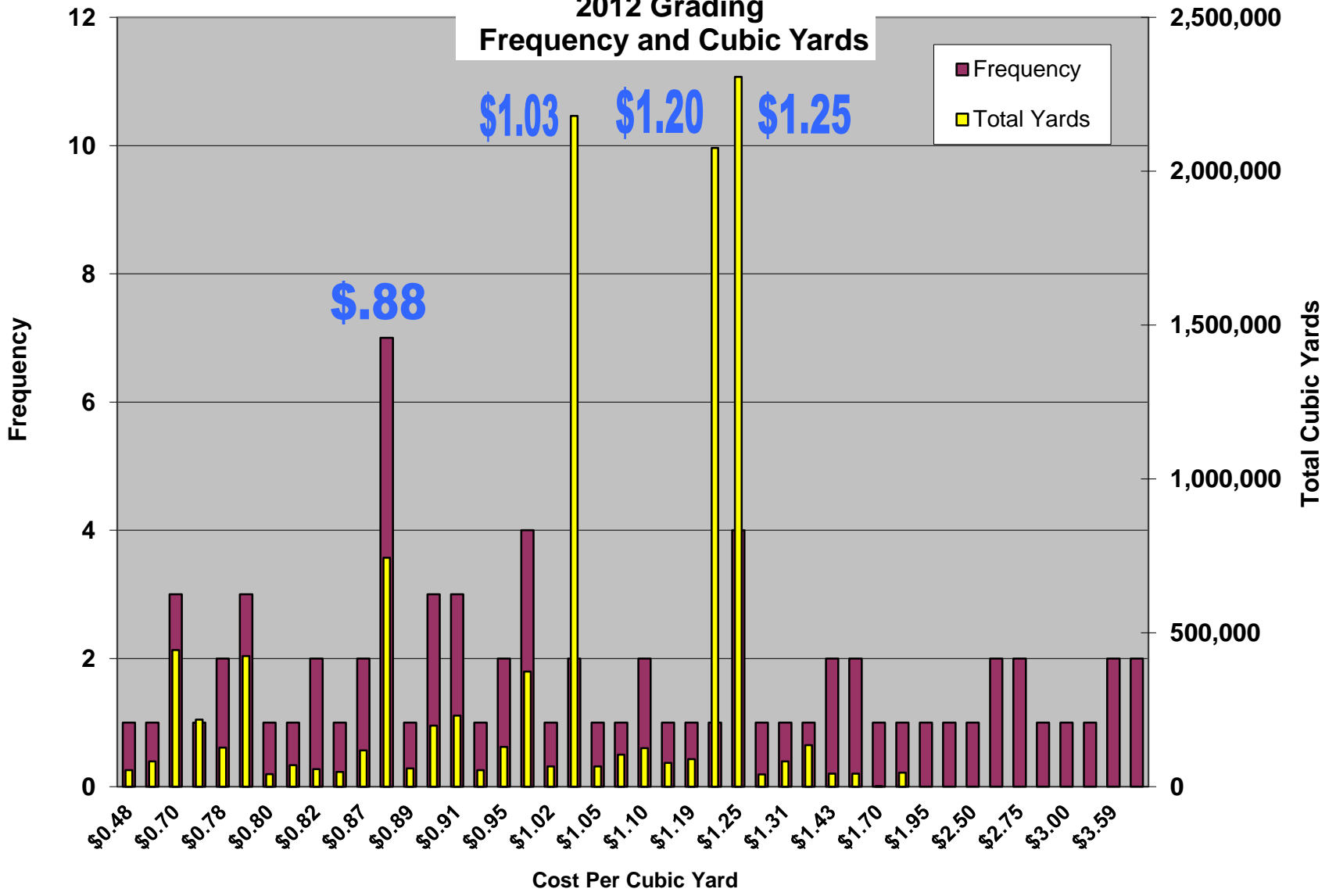
# **2013 Bond Rate Guidelines for the Calculation of Land Reclamation Bonds on Coal Mining Operations**

MRAB Meeting  
October 25, 2012

### 2012 AML Reclamation Grading Costs - 3 Lowest Project Bids

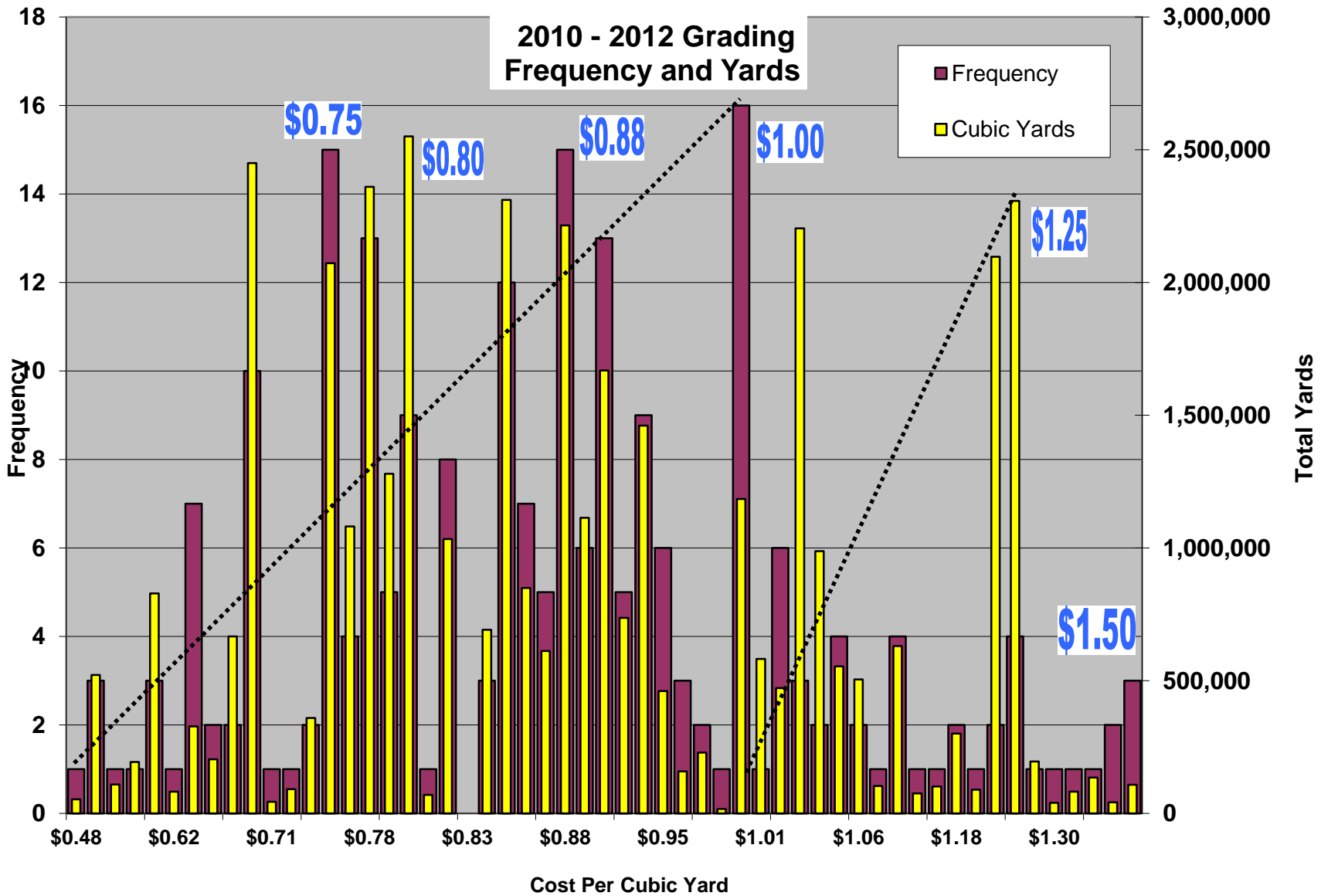
	DESCRIPTION	QUANTITIES	UNIT PRICE	TOTAL	UNIT PRICE	TOTAL	UNIT PRICE	TOTAL		
Reclamation Project	Task	Cubic Yards	Cost per CY	Low Project Bid	Cost per CY	2nd Project Bid	Cost per CY	3rd Project Bid		
OSM 16(6348)101.1	Grading	306,400	\$0.70	\$214,480.00	\$0.79	\$242,056.00	\$0.88	\$269,632.00		
OSM 56(2517)201.1	Grading	7,600	\$1.95	\$14,820.00	\$2.95	\$22,420.00	\$3.00	\$22,800.00		
OSM 10(3147)101.1	Grading									
	A. Area A	104,000	\$1.03	\$107,120.00	\$1.00	\$104,000.00	\$1.08	\$112,320.00		
	B. Area B	40,000	\$0.88	\$35,200.00	\$1.00	\$40,000.00	\$1.30	\$52,000.00		
		<b>3,607,219</b>	<b>\$0.96</b>	<b>\$3,468,455.33</b>	<b>\$1.14</b>	<b>\$4,102,560.81</b>	<b>\$1.21</b>	<b>\$4,354,245.14</b>	<b>\$1.10</b>	<b>\$3,975,087.09</b>

## 2012 Grading Frequency and Cubic Yards

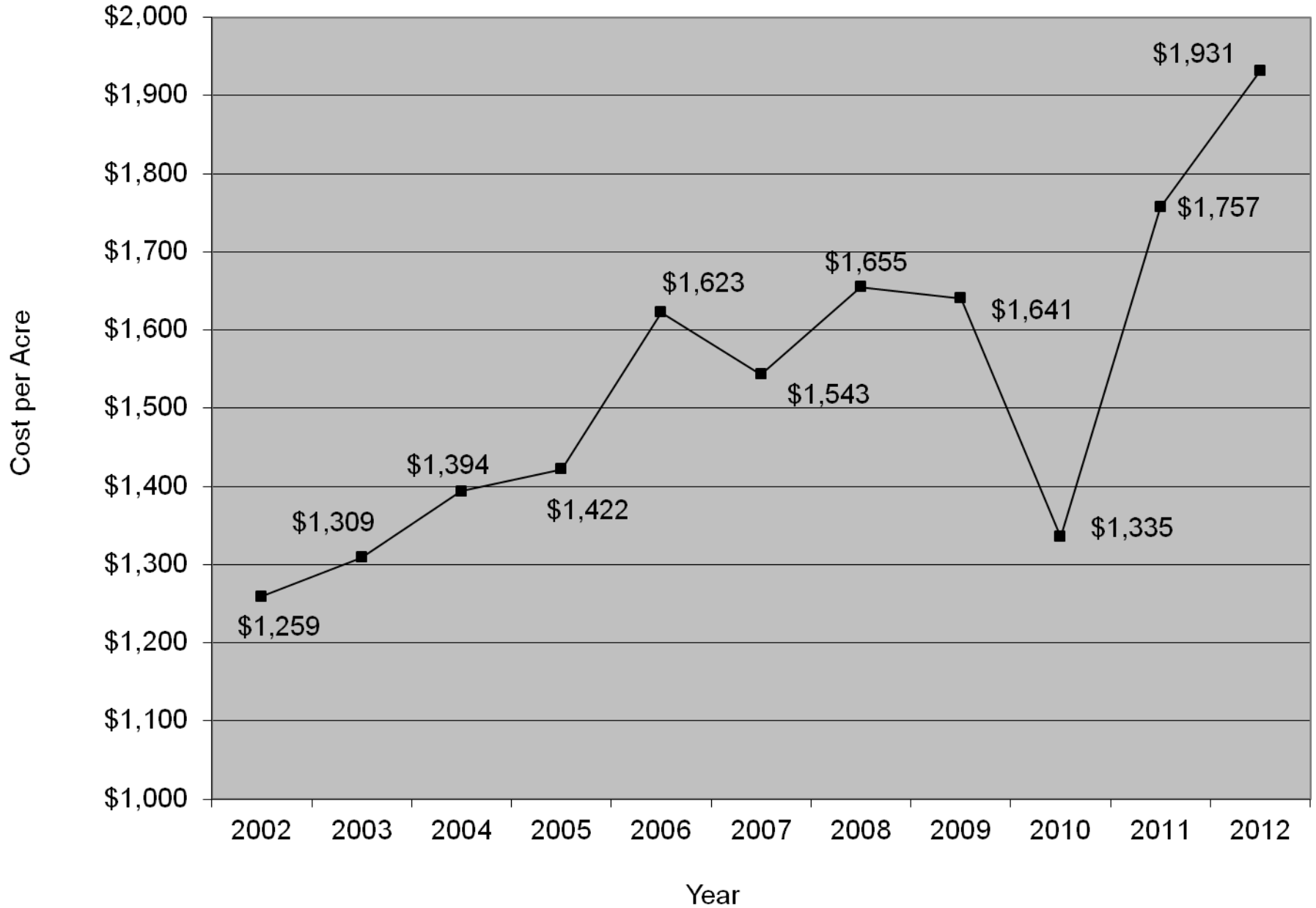




### 2010 - 2012 Grading Frequency and Yards



# Revegetation Trend



**Summary of Calculated Bond Rates by Task**

**Proposed Rates**

Unit		2010 wgt ave	2010 amt	2011 wgt ave	2011 amt	2012 wgt ave	2012 amt	10-12 Weighted	2011	2012	2013
Grading1	Yd	\$0.86	7,275,224	\$0.82	3,452,835	\$1.10	3,607,219.0	\$0.91	\$0.80	\$0.75	\$0.90
Grading2	Yd								\$1.00	\$1.00	\$1.15
Select Grading	Acre			\$1,545.00	11.7				\$1,050.00	\$1,075.00	\$1,075.00
Reveg	Acre	\$1,335.25	715.5	\$1,757.21	328.6	\$1,913.94	92.4	\$1,504.30	\$1,470.00	\$1,500.00	\$1,500.00
Trees	each	\$2.55	18,334.0	\$2.27	55,190.0						
Ditch Ex	Yd	\$4.93	17,457.0	\$6.96	6,125.0	\$7.83	50,435.0	\$7.07	\$4.25	\$5.00	\$7.00
Jute	sq yd	\$3.70	4,407.0	\$2.95	1,305.0	\$2.45	2,850.0	\$3.17	\$3.50	\$3.50	\$3.00
HV Erosion	sq yd	\$2.86	17,000.0	\$3.94	1,835.0	\$6.26	1,180.0	\$3.16	\$3.00	\$3.00	\$3.00
AASHTO No. 1	Ton	\$17.43	200.0	\$30.18	1,470.0	\$26.05	590.0	\$27.98	\$24.00	\$30.00	\$28.00
AASHTO No. 57	Ton	\$17.35	51.0	\$25.99	24.0	\$47.27	106.0	\$36.02	\$25.00	\$25.00	\$36.00
R3	Ton			\$25.83	55.0	\$45.33	60.0	\$36.01	\$26.00	\$26.00	
R4	Ton	\$22.50	1,540.0	\$27.63	1,500.0	\$32.38	255.0	\$25.60	\$20.00	\$21.00	\$25.00
R5	Ton	\$23.17	1,980.0	\$34.33	95.0	\$31.66	252.0	\$24.55	\$20.00	\$23.00	\$25.00
Geotex	sq yd	\$2.59	520.0	\$3.03	2,760.0	\$2.61	2,215.0	\$2.82	\$1.75	\$3.00	\$2.80
PVC lining	sq yd			\$12.18	1,200.0			\$12.18	\$12.00	\$12.00	\$12.00
Lime	Ton	\$38.42	2,072.5	\$44.96	1,756.7	\$60.90	70.0	\$41.77			
Subdrain	foot	\$15.60	12,360.0	\$22.07	1,050.0	\$16.76	2,075.0	\$16.20	\$16.00	\$16.00	\$16.00
Mulch	Acre	\$650.80	547.0	\$779.15	337.8	\$784.06	80.5	\$706.83			
Seed Bed Prep	Acre	\$177.12	550.1	\$213.05	356.6	\$228.92	70.0	\$193.95			
Seed	Acre	\$227.73	593.2	\$300.27	467.2	\$315.51	77.0	\$263.47			

	2011	2011	2012	2012	2013	2013
Reveg Tot	\$1,470.00	\$1,470.00	\$1,500.00	\$1,500.00	\$1,500.00	\$1,500.00
Mulch	\$625.00	\$625.00	\$665.00	\$665.00	\$700.00	\$700.00
Seed Bed	\$195.00	\$195.00	\$195.00	\$195.00	\$190.00	\$190.00
Seed	\$195.00		\$220.00		\$265.00	
	\$455.00	\$650.00	\$420.00	\$640.00	\$345.00	\$610.00
	Cropland	w/Seed	Cropland	w/seed	Cropland	w/seed



**pennsylvania**  
DEPARTMENT OF ENVIRONMENTAL PROTECTION



**Bureau of Mining Programs**

**Bruce Carl**  
**Bureau of Mining Programs**  
**717-787-5103**  
**[brcarl@pa.gov](mailto:brcarl@pa.gov)**