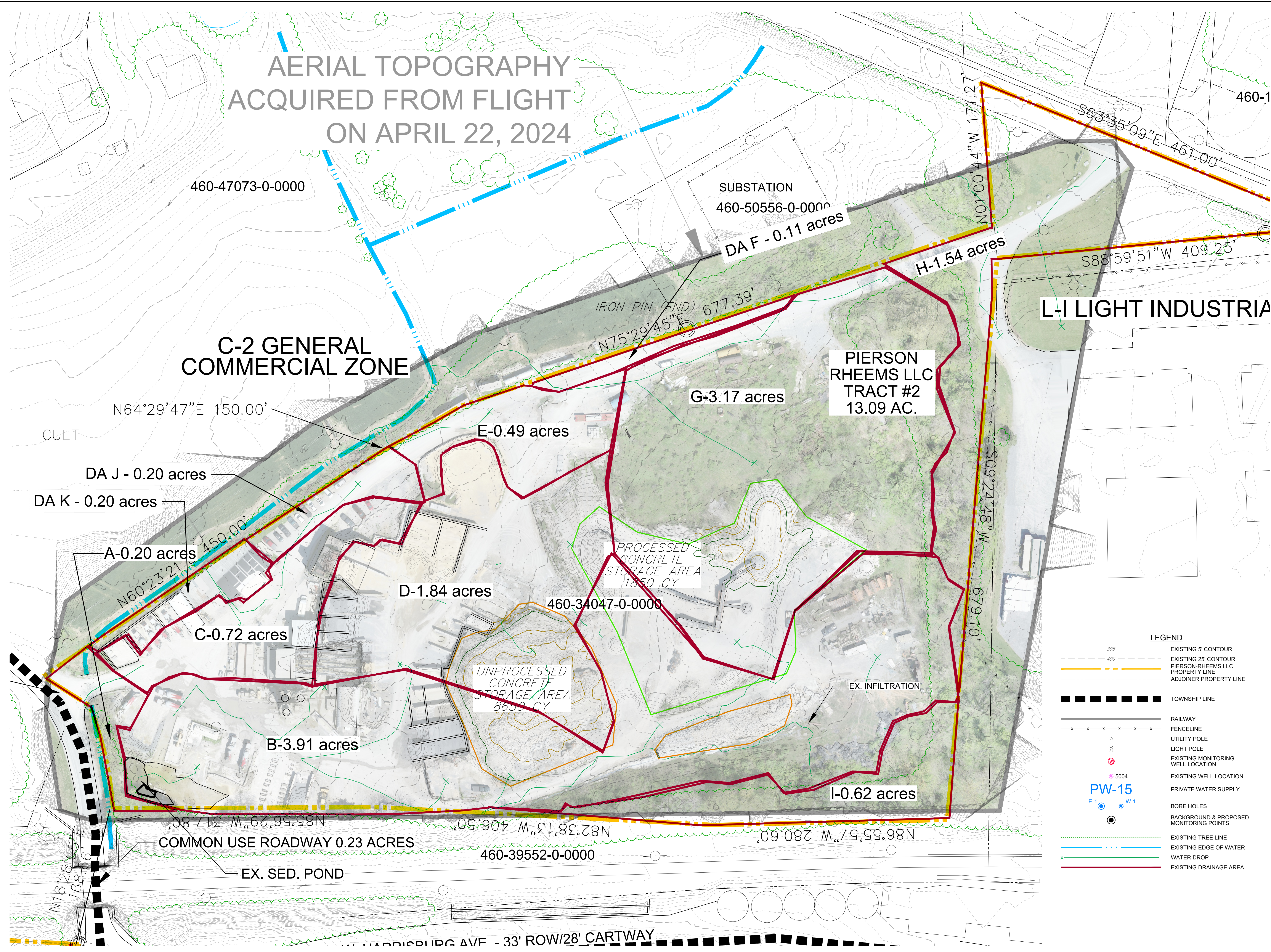
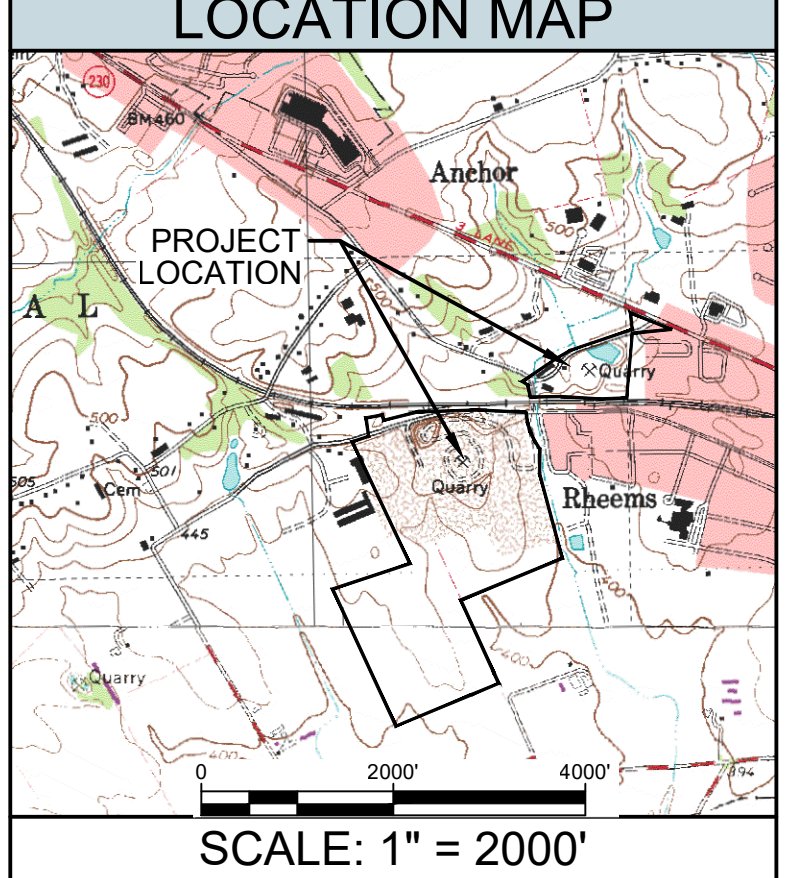


AERIAL TOPOGRAPHY ACQUIRED FROM FLIGHT ON APRIL 22, 2024



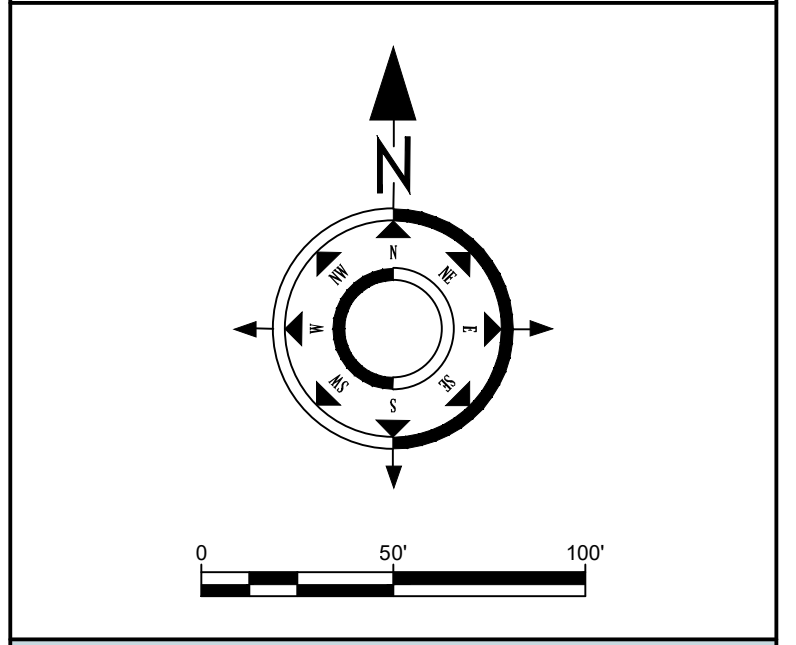
Akens Engineering Associates, Inc.
 219 E. Main St. Shiremanstown, Pa. 17011
 (P) 717-975-9933 (F) 717-975-5507
 www.akensengineering.com
 "Providing Quality Engineering & Surveying Services since 1983."



REGISTERED PROFESSIONAL ENGINEER
 SCOTT WILLIAM AKENS
 ENGINEER PROFESSIONAL
 PE073141

I hereby certify that this plan is correct and accurate to the best of my knowledge.

Scott W. Akens
 SCOTT W. AKENS
 Professional Engineer, PE073141
 Submitted on this 29th day of OCTOBER, 2024.



REVISIONS:
 Rev. Oct 29, 2024 as per PADEP Meeting

LEGEND

--- 395	EXISTING 5' CONTOUR
--- 400	EXISTING 25' CONTOUR
---	PIERSON-RHEEMS LLC PROPERTY LINE
---	ADJOINER PROPERTY LINE
█	TOWNSHIP LINE
---	RAILWAY
---	FENCELINE
○	UTILITY POLE
*	LIGHT POLE
○	EXISTING MONITORING WELL LOCATION
○	EXISTING WELL LOCATION
○	PRIVATE WATER SUPPLY
○	BORE HOLES
○	BACKGROUND & PROPOSED MONITORING POINTS
---	EXISTING TREE LINE
---	EXISTING EDGE OF WATER
---	WATER DROP
---	EXISTING DRAINAGE AREA

**CONCRETE PLANT
PRE-DEV DRAINAGE AREA
MAP**

SURFACE MINE PERMIT NO. 36080301
 NPDES PERMIT NO. PA 0224651
 AUTHORIZATION TO MINE
 PERMIT NO. 6980-36080301-01

**PIERSON RHEEMS LLC
QUARRY OPERATION**

WEST DONEGAL & MT JOY TOWNSHIPS
 LANCASTER COUNTY, PA

SCALE:	SHEET NUMBER:
1" = 50'	1 of 1
PLAN DATE:	
August 29, 2024	
FILE NAME:	