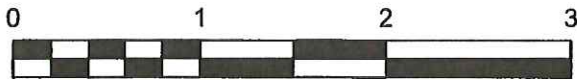


LAT: 40°10' 08"
LONG: 79°23' 32"

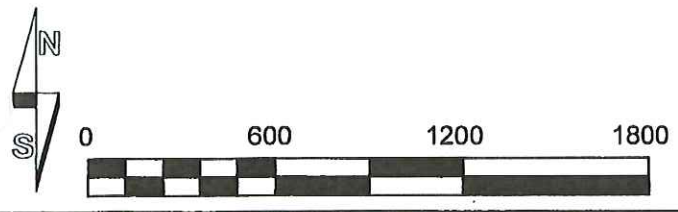
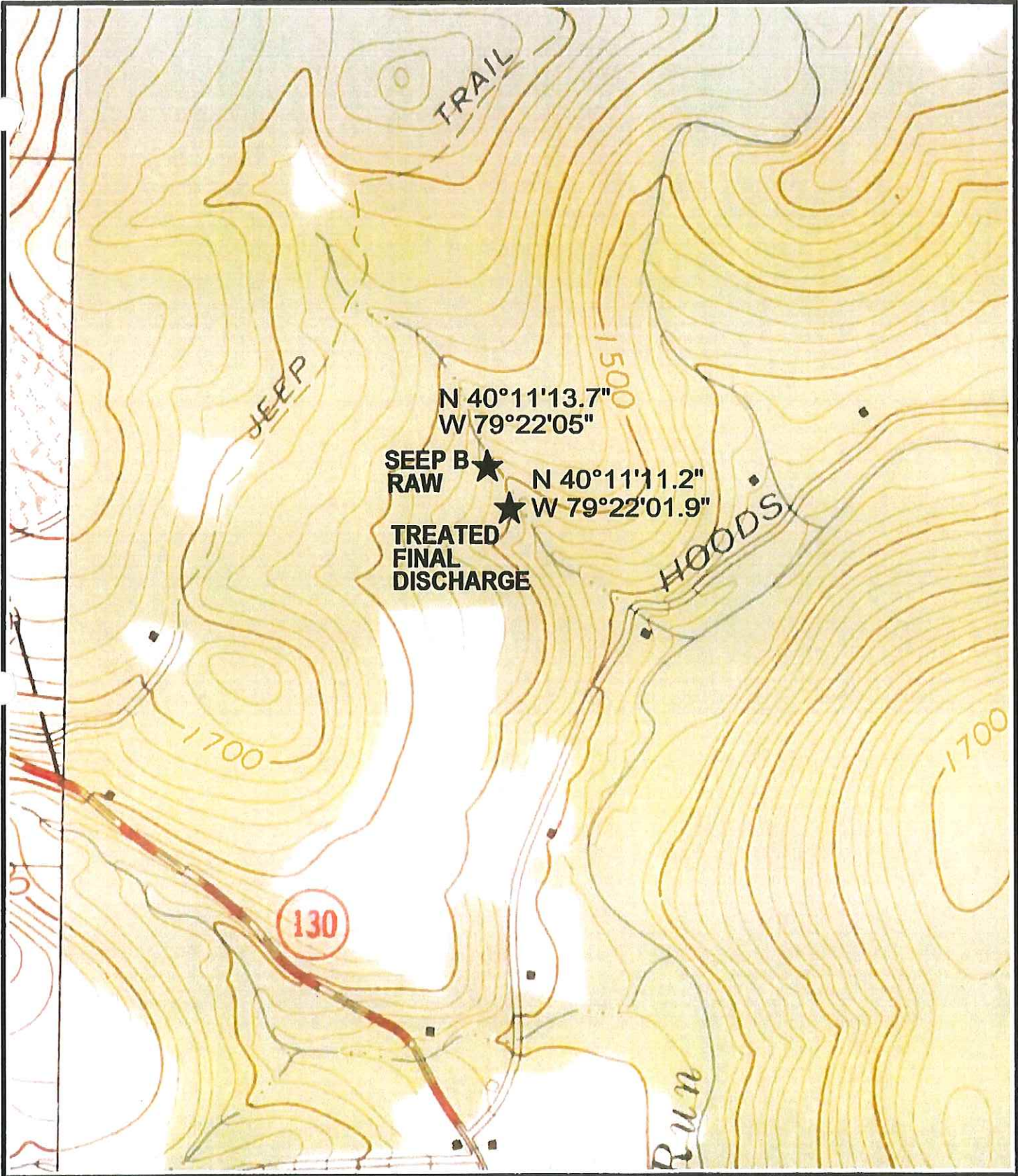
★ RAW D

★ TREATED FD
LAT: 40°10' 06"
LONG: 79°23' 26"

1780

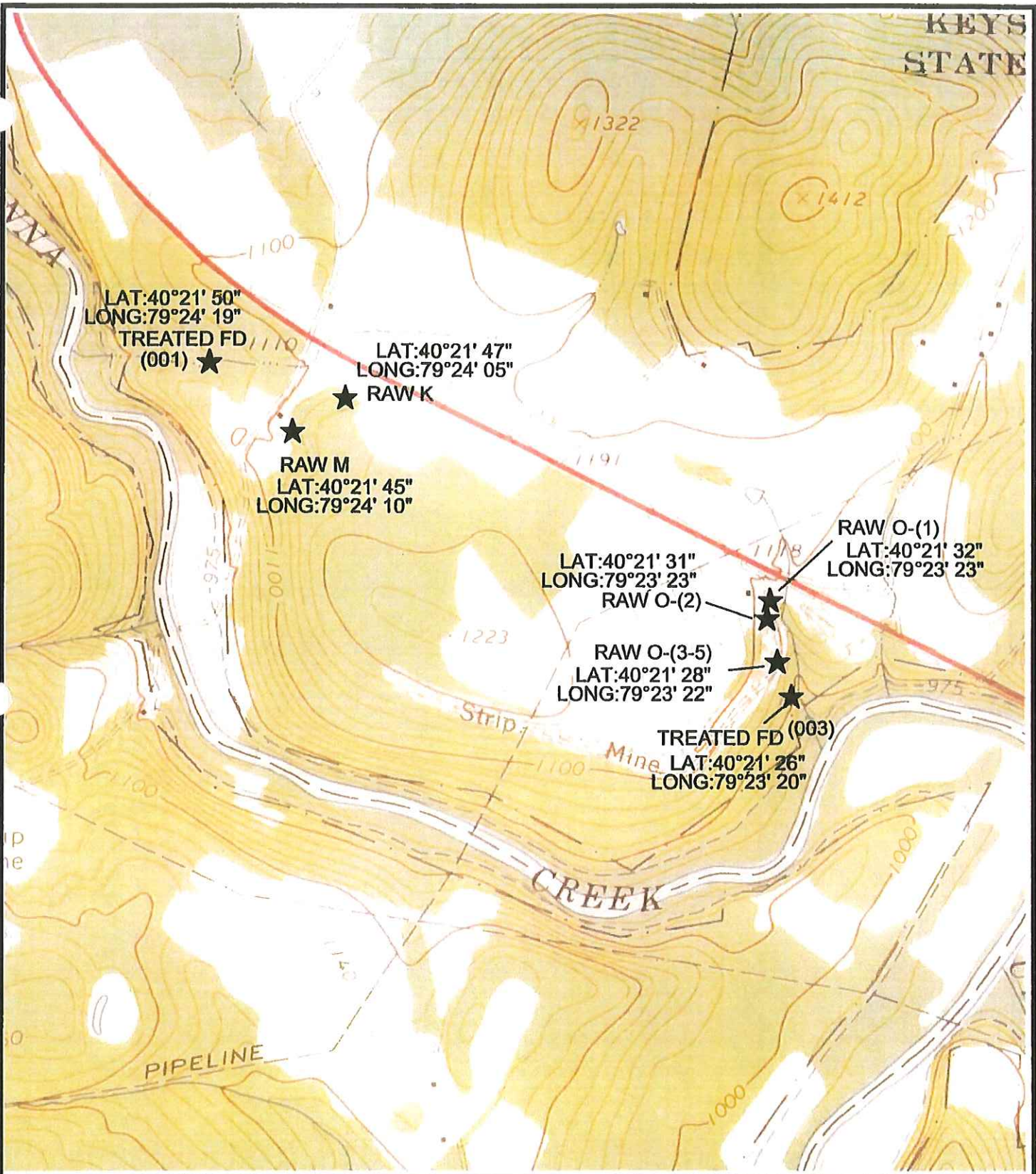


M.B. ENERGY INC.
RIDGE ROAD MINE
PERMIT NO. 65860105
DONEGAL TOWNSHIP
WESTMORELAND COUNTY



M.B. Energy Inc.
Campbell-Skovira Mine
Permit No.65810113
Cook & Donegal Townships
Westmoreland County

KEYS
STATE



LAT:40°21' 50"
LONG:79°24' 19"
TREATED FD
(001) ★

LAT:40°21' 47"
LONG:79°24' 05"
★ RAW K

★
RAW M
LAT:40°21' 45"
LONG:79°24' 10"

LAT:40°21' 31"
LONG:79°23' 23"
RAW O-(2)

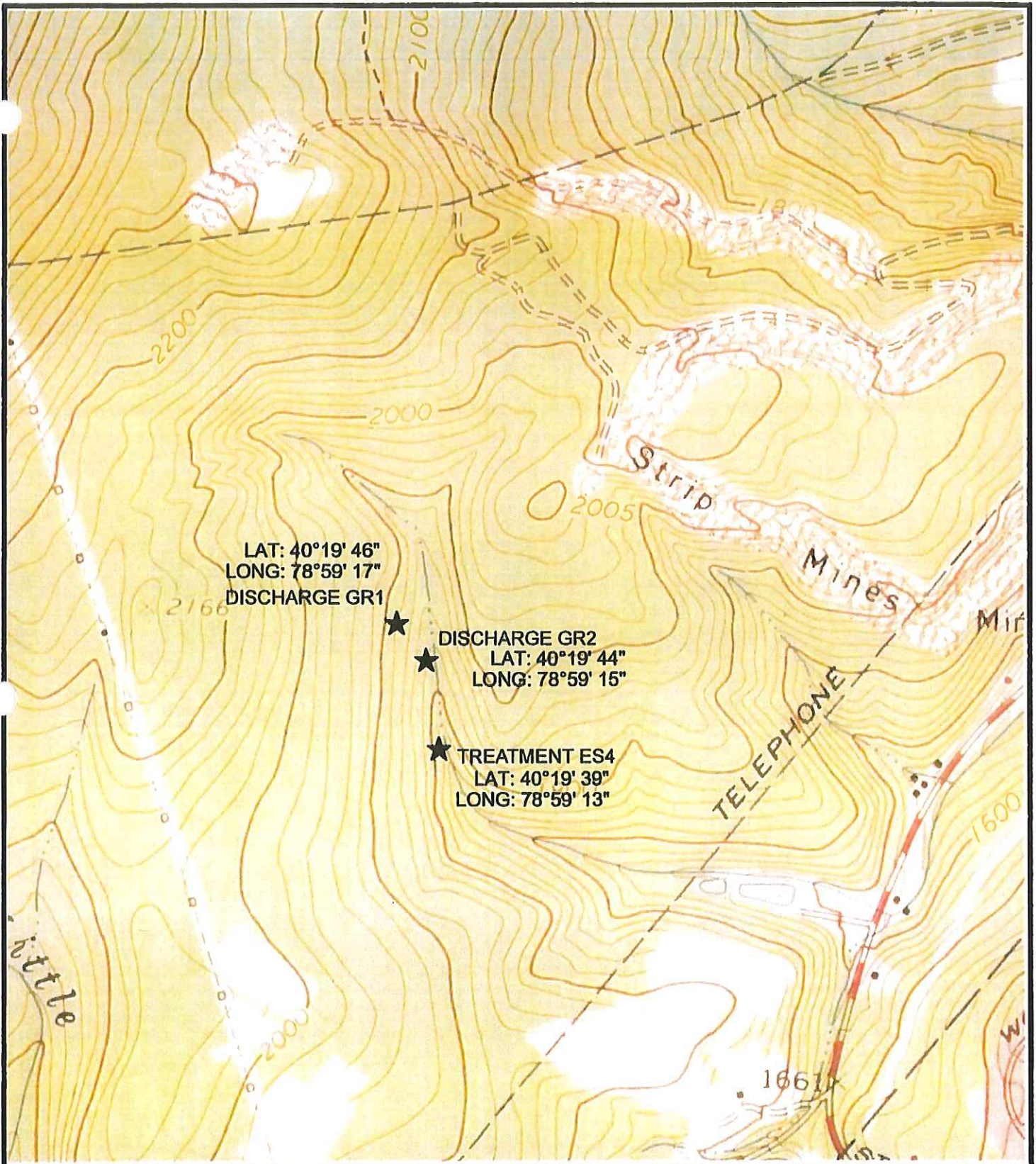
RAW O-(1)
LAT:40°21' 32"
LONG:79°23' 23"

★
RAW O-(3-5)
LAT:40°21' 28"
LONG:79°23' 22"

★
TREATED FD (003)
LAT:40°21' 26"
LONG:79°23' 20"



M.B. ENERGY INC.
HALL-TALLENT MINE
PERMIT NO. 3473SM8
DERRY TOWNSHIP
WESTMORELAND COUNTY



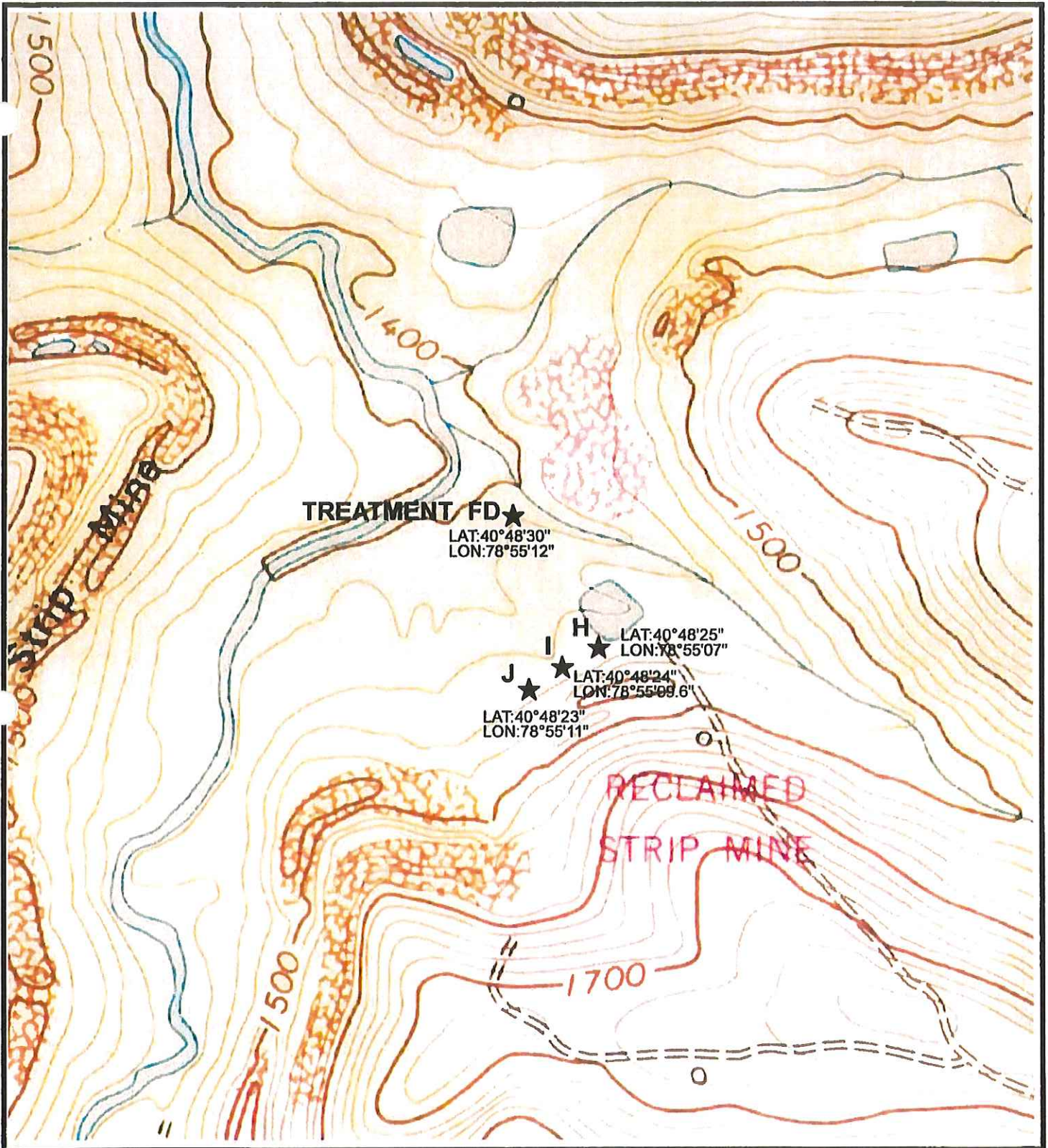
LAT: 40°19' 46"
LONG: 78°59' 17"
DISCHARGE GR1

DISCHARGE GR2
LAT: 40°19' 44"
LONG: 78°59' 15"

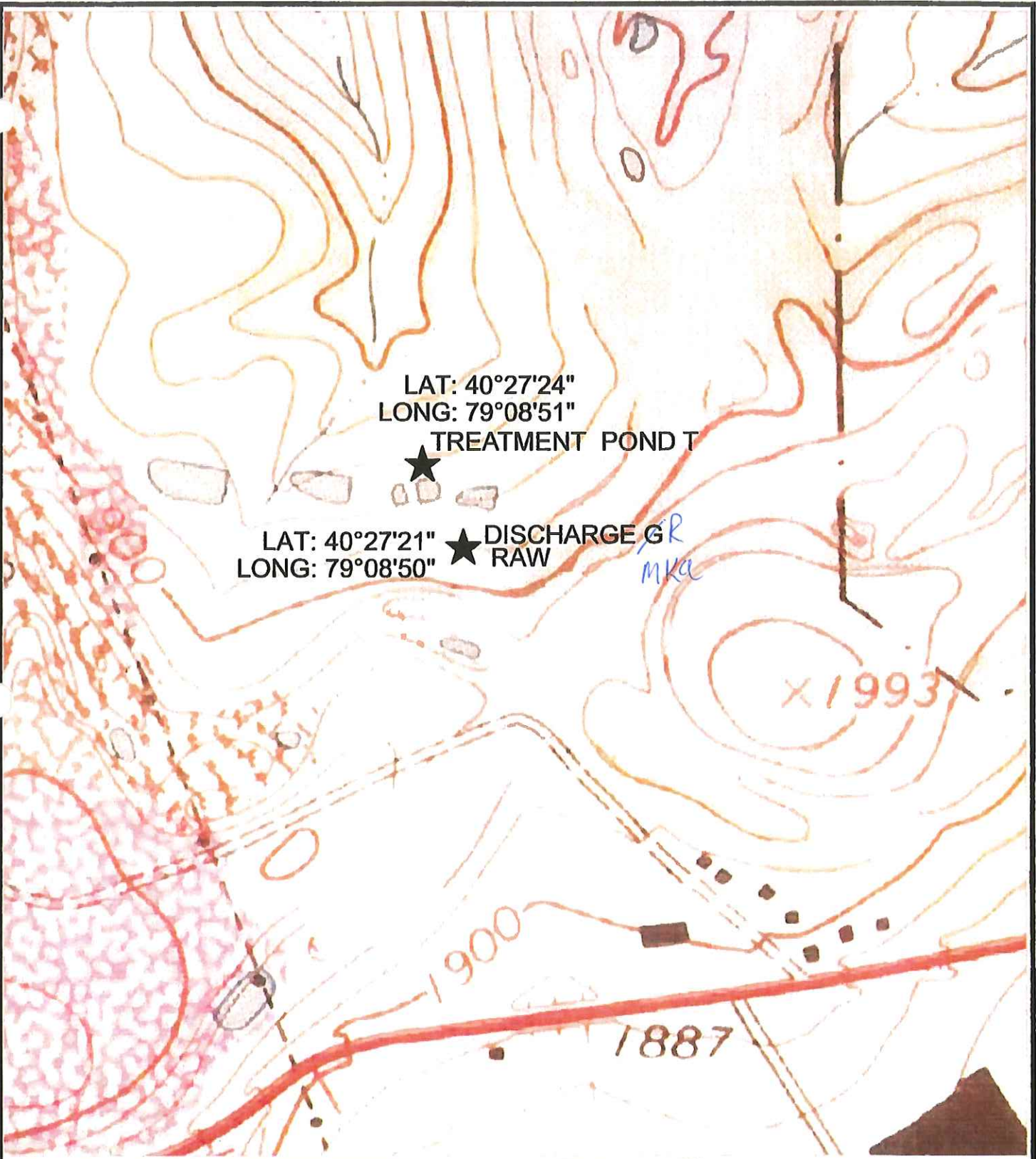
TREATMENT ES4
LAT: 40°19' 39"
LONG: 78°59' 13"



M.B. ENERGY INC.
GRABIAK STRIP
PERMIT NO. 11830102
LOWER YODER TOWNSHIP
CAMBRIA COUNTY



M.B. ENERGY INC.
CBC STRIP
PERMIT NO.32820134
GRANT TOWNSHIP
INDIANA COUNTY



LAT: 40°27'24"
LONG: 79°08'51"

★ TREATMENT POND T

LAT: 40°27'21"
LONG: 79°08'50"

★ DISCHARGE GR
RAW

GR
MKA

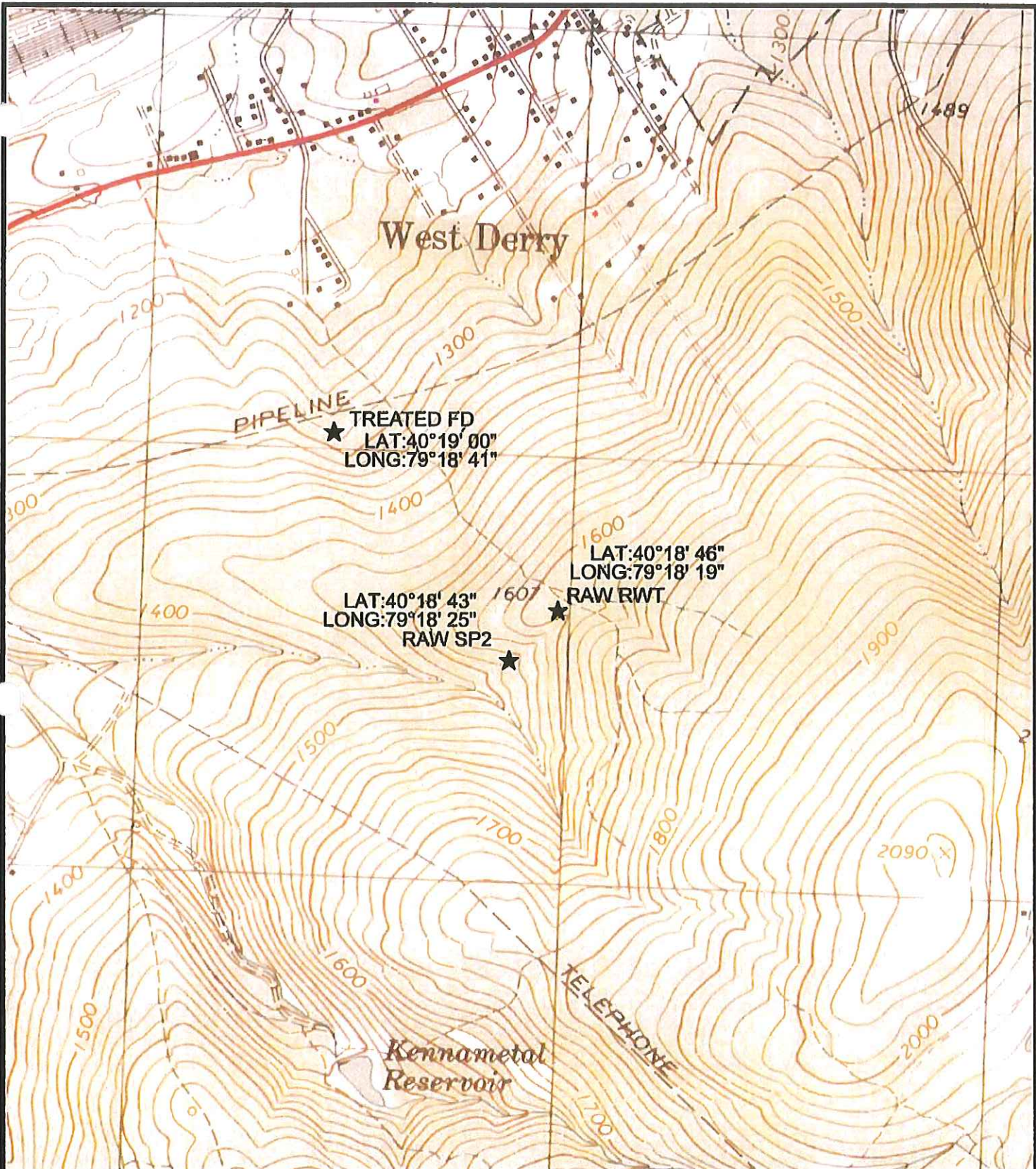
X1993

1900

1887

M.B. ENERGY INC.
DIETRICH MINE
PERMIT NO. 32810135
WEST WHEATFIELD TOWNSHIP
INDIANA COUNTY





M.B. ENERGY INC.
SAXMAN RUN MINE
PERMIT NO. 65010101
DERRY TOWNSHIP
WESTMORELAND COUNTY

Primary Facility: 65860105

Monitoring Point: D1

Coll ID	Seq	Date Collected	Initial Flow	Final Flow	Determ Method	pH	ALK MG/L	HOT A MG/L	FE MG/L	MN MG/L	AL MG/L	SO4 MG/L	TSS MG/L	NA MG/L
4154	491	11/17/2015	1	1	Est	7.5	285.8	-209.60	.98	.362	<.5	678.2	8	
4154	618	02/01/2016	20	20	Est	6.7	408.4	-373.00	2.206	1.659	<.5	1021.0	6	
4154	797	05/05/2016	25	25	Est	6.6	409.4	-375.60	2.557	1.494	<.5	1202.0	14	
4154	983	08/18/2016	20	20	Est	6.9	410.6	-358.40	2.607	1.552	<.5	1078.0	18	
4154	127	10/27/2016	35	35	Est	6.4	399.2	-344.40	3.112	1.547	<.5	1150.0	6	
4154	339	02/01/2017	25	25	Est	6.6	378.8	-368.60	2.864	1.552	<.5	1055.0	<5	
4154	531	05/17/2017	40	40	Est	6.7	384.0	-364.60	2.866	1.542	<.5	937.0	14	
4154	682	08/11/2017	30	30	Est	6.7	398.8	-342.20	2.428	1.311	<.5	1020.0	10	
4154	889	11/15/2017	40	40	Est	6.8	401.0	-374.80	2.956	1.438	<.5	829.1	10	
4154	079	03/02/2018	40	40	Est	6.9	354.4	-319.40	2.729	1.444	<.5	1173.0	12	
4154	216	05/10/2018	40	40	Est	6.8	369.6	-347.40	2.581	1.492	<.5	906.3	8	
4154	394	08/22/2018	30	30	Est	7.0	385.0	-367.80	2.342	1.248	<.5	1017.0	6	

Primary Facility: 65810113

Monitoring Point: B

Coll ID	Seq	Date Collected	Initial Flow	Final Flow	Determ Method	pH units	ALK MG/L	HOT A MG/L	FE MG/L	MN MG/L	AL MG/L	SO4 MG/L	TSS MG/L	NA MG/L
4154	298	08/04/2015	1	1	Est	7.0	253.2	-131.20	10.345	3.037	<.5	529.9	6	
4154	365	09/10/2015	3	3	Est	6.4	275.2	-170.40	12.281	2.788	<.5	783.4	10	
4154	489	11/17/2015	.1	.1	Est	6.6	331.4	-244.60	26.848	2.838	<.5	677.6	28	
4154	794	05/05/2016	1	1	Est	7.2	251.0	-226.80	7.603	2.607	<.5	587.3	16	
4154	015	09/01/2016	3	3	Est	7.0	265.2	-220.60	10.295	2.653	<.5	860.5	<5	
4154	224	12/22/2016	6	6	Est	6.7	302.2	-241.00	10.257	2.555	<.5	635.4	6	
4154	336	02/01/2017	3	3	Est	6.7	263.6	-238.80	10.627	2.732	<.5	742.3	16	
4154	567	06/07/2017	2	2	Est	6.6	258.2	-238.60	9.56	2.573	<.5	570.1	12	
4154	739	09/13/2017	5	5	Est	6.8	280.2	-244.20	10.581	2.503	<.5	515.2	12	
4154	921	12/11/2017	5	5	Est	6.7	300.0	-265.60	10.032	2.48	<.5	523.4	<5	
4154	075	03/01/2018	7	7	Est	7.0	266.6	-236.40	8.418	2.603	<.5	550.5	<5	
4154	229	05/11/2018	8	8	Est	7.0	256.6	-229.60	7.487	2.739	<.5	540.3	<5	

Primary Facility: 3473SM8

Monitoring Point: K

Coll ID	Seq	Date Collected	Initial Flow	Final Flow	Determ Method	pH units	ALK MG/L	HOT A MG/L	FE MG/L	MN MG/L	AL MG/L	SO4 MG/L	TSS MG/L	NA MG/L
4154	164	05/01/2015	5	5	Est	3.4	0.0	56.40	.717	3.053	5.414	503.0	18	
4154	767	04/25/2016	1	1	Est	3.1	0.0	110.60	2.134	4.818	10.117	438.4	<5	
4154	229	12/23/2016	5	5	Est	3.1	0.0	140.60	2.428	4.827	10.085	353.9	<5	
4154	024	02/02/2018	0	0		2.9	0.0	152.40	1.954	5.124	11.77	491.5	<5	

Primary Facility: 3473SM8

Monitoring Point: EWL

Coll ID	Seq	Date Collected	Initial Flow	Final Flow	Determ Method	pH units	ALK MG/L	HOT A MG/L	FE MG/L	MN MG/L	AL MG/L	SO4 MG/L	TSS MG/L	NA MG/L
4154	000	03/29/2016	0	0	Est									
4154	732	09/12/2017	7	7	Est	5.1	9.0	14.20	<.3	6.416	1.605	538.4	<5	
4154	240	05/15/2018	150	150	Est	4.1	3.2	25.00	<.3	3.662	2.616	410.5	<5	

Primary Facility: 3473SM8

Monitoring Point: SEC3

Coll ID	Seq	Date Collected	Initial Flow	Final Flow	Determ Method	pH	ALK MG/L	HOT A MG/L	FE MG/L	MN MG/L	AL MG/L	SO4 MG/L	TSS MG/L	NA MG/L
4129	600	07/30/2014	10	10	Est	3.6	0.0	84.20	<.3	8.921	9.664	707.6	<5	
4154	711	03/29/2016	5	5	Est	3.6	0.0	74.60	<.3	7.97	9.394	664.9	6	

Primary Facility: 11830102

Monitoring Point: GR2

Coll ID	Seq	Date Collected	Initial Flow	Final Flow	Determ Method	pH units	ALK MG/L	HOT A MG/L	FE MG/L	MN MG/L	AL MG/L	SO4 MG/L	TSS MG/L	NA MG/L
4125	913	04/02/2014	15	15	Est	4.9	1.0	31.60	1.327	1.364	<.5	124.6	<5	
4125	481	03/25/2015	15	15	Est	4.6	0.0	13.20	8.575	3.017	<.5	212.8	<5	
4125	943	02/01/2016	15	15	Est	5.3	8.6	-2.60	1.521	1.042	<.2	89.4	<5	
4125	279	08/01/2016	20	20	Meas	6.5	78.2	-26.60	29.358	12.543	<.5	421.7	36	
4125	793	07/31/2017				3.7	0.0	24.20	3.037	3.176	<.2	128.2	<5	

Primary Facility: 32810135

Monitoring Point: MPR

Coll ID	Seq	Date Collected	Initial Flow	Final Flow	Determ Method	pH units	ALK MG/L	HOT A MG/L	FE MG/L	MN MG/L	AL MG/L	SO4 MG/L	TSS MG/L	NA MG/L
4328	622	10/10/2013				3.8	0.0	188.40	1.573	13.632	24.569	790.2	<5	
4328	411	11/02/2015				4.3	6.6	154.40	1.258	13.026	23.34	804.3	8	
4328	001	07/27/2017				3.5	0.0	197.20	1.553	9.888	26.127	629.2	<5	
4328	016	08/23/2017				3.7	0.0	156.40	1.326	9.036	20.838	509.4	<5	
4328	054	10/24/2017				3.8	0.0	186.20	2.126	11.02	24.943	701.7	22	
4328	078	11/29/2017				3.2	0.0	289.40	.982	11.088	37.407	580.7	6	
4328	102	01/23/2018				3.4	0.0	202.00	.646	8.155	26.357	441.0	<5	
4328	123	02/20/2018				3.4	0.0	275.40	.548	9.612	35.399	546.9	6	
4328	172	03/29/2018				3.7	0.0	132.80	.656	6.271	17.627	329.7	8	
4328	280	07/19/2018				3.4	0.0	204.20	1.72	10.537	28.179	549.6	<5	

Primary Facility: 65010101

Monitoring Point: RWT

Coll ID	Seq	Date Collected	Initial Flow	Final Flow	Determ Method	pH units	ALK MG/L	HOT A MG/L	FE MG/L	MN MG/L	AL MG/L	SO4 MG/L	TSS MG/L	NA MG/L
4129	581	07/22/2014	20	20	Est	3.5	0.0	166.00	4.087	24.49	19.314	877.0	12	
4154	071	03/16/2015	90	90	Est	3.8	0.0	66.20	.558	7.899	5.378	318.1	<5	
4154	223	06/26/2015	100	100	Est	3.8	0.0	98.00	.828	11.427	7.517	437.5	<5	
4154	313	08/10/2015	30	30	Est	3.7	0.0	142.40	1.914	21.145	16.607	787.6	<5	
4154	681	03/15/2016	60	60	Est	3.8	0.0	53.40	.725	8.747	6.805	411.5	<5	
4154	807	05/18/2016	60	60	Est	3.8	0.0	67.00	.691	10.635	8.035	509.0	<5	
4154	035	09/23/2016	6.75	6.75	Est	3.6	0.0	214.20	2.164	26.476	23.34	1075.0	<5	
4154	181	11/30/2016	31	31	Est	3.6	0.0	189.60	3.433	24.659	22.378	947.7	8	
4154	553	05/30/2017	80	80	Est	3.8	0.0	67.40	.449	9.839	8.688	467.2	<5	
4154	198	05/01/2018	55	55	Est	3.9	0.6	63.80	.328	9.444	8.33	451.2	<5	

Primary Facility: 65010101

Monitoring Point: SP2

Coll ID	Seq	Date Collected	Initial Flow	Final Flow	Determ Method	pH units	ALK MG/L	HOT A MG/L	FE MG/L	MN MG/L	AL MG/L	SO4 MG/L	TSS MG/L	NA MG/L
4129	583	07/22/2014	8	8	Meas	4.8	0.0	36.00	<.3	11.318	5.794	709.7	14	
4154	220	06/26/2015	25	25	Est	4.8	8.0	51.40	<.3	7.7	4.682	428.6	6	
4154	440	10/29/2015	20	20	Est	5.0	8.6	36.20	<.3	5.312	2.43	355.9	<5	
4154	806	05/18/2016	30	30	Est	4.7	9.0	31.40	<.3	7.501	5.614	478.3	14	
4154	182	11/30/2016	12	12	Est	4.6	10.0	66.80	.62	12.987	10.826	856.0	18	
4154	554	05/30/2017	40	40	Est	4.7	9.2	31.40	<.3	7.422	5.963	439.5	8	
4154	199	05/01/2018	30	30	Est	4.7	8.4	38.40	<.3	6.811	5.879	420.0	<5	