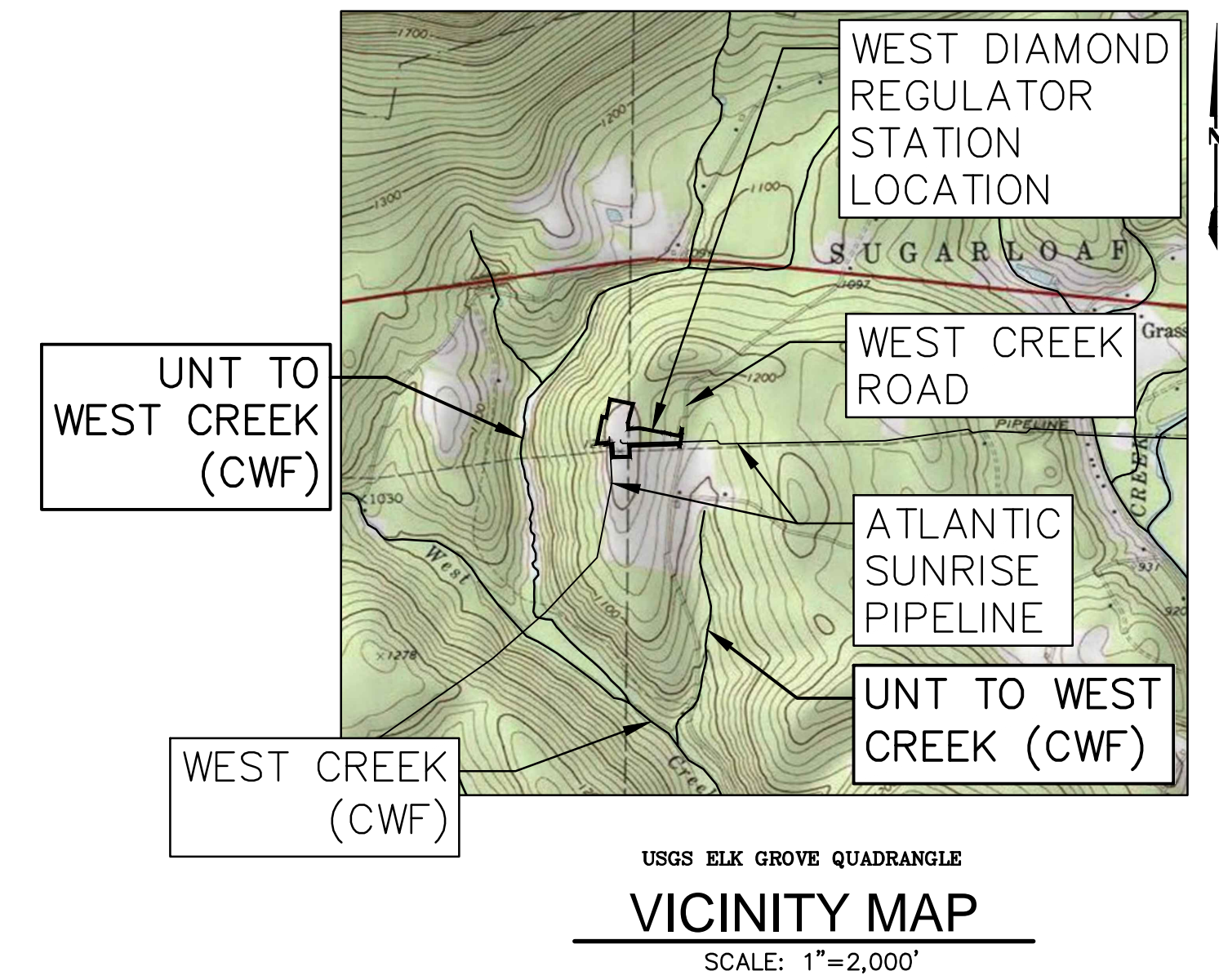


# ATLANTIC SUNRISE PROJECT PROPOSED 30"/42" NATURAL GAS PIPELINE

## POST CONSTRUCTION STORMWATER MANAGEMENT PLANS FOR WEST DIAMOND REGULATOR STATION & ASSOCIATED PERMANENT ACCESS ROADS



FACILITY NAME & TYPE	DRAWING NO.	SHEET NO.	DRAWING NAME
WEST DIAMOND REGULATOR STATION (REVISED)	(36-7943)MF-1A-9	1 of 8	COVER SHEET <b>REVISED</b>
	(36-7943)MF-1A-9	2 of 8	SENSITIVE RESOURCES MAP
	(36-7943)MF-1A-9	3 of 8	POST CONSTRUCTION STORMWATER MANAGEMENT PLAN
	(36-7943)MF-1A-9	4 of 8	ACCESS ROAD CO-106.1 LAYOUT PLAN
	(36-7943)MF-1A-9	5 of 8	PCSM NOTES AND DETAILS <b>REVISED</b>
	(36-7943)MF-1A-9	6 of 8	PCSM NOTES AND DETAILS
	(36-7943)MF-1A-9	7 of 8	PCSM NOTES AND DETAILS <b>REVISED</b>
	(36-7943)MF-1A-9	8 of 8	PCSM NOTES AND DETAILS <b>REVISED</b>

### PHASE 2

JACKSON/SUGARLOAF TOWNSHIPS  
COLUMBIA COUNTY

PENNSYLVANIA



PENNSYLVANIA ACT 287 (1974)  
AS AMENDED BY PENNSYLVANIA  
ACT 199 (2004) REQUIRES NO  
LESS THAN THREE (3) WORKING  
DAYS AND NO MORE THAN (10)  
WORKING DAYS NOTICE TO  
UTILITIES BEFORE YOU EXCAVATE,  
DRILL, BLAST OR DEMOLISH.

**ENGINEER OF RECORD**  
BL COMPANIES  
4242 CARLISLE PIKE, SUITE 260  
CAMP HILL, PA 17011  
P:717-651-9850  
F:717-651-9858

REVISIONS				TRANSCONTINENTAL GAS PIPE LINE COMPANY, LLC	
NO.	DATE	BY	DESCRIPTION	W.O. NO.	CHK. APP.
0	08/26/2015	BL	ISSUED FOR PADEP PERMIT SUBMITTAL	W01161501	DAK AJB
1	12/02/2015	BL	ISSUED FOR PADEP RESUBMITTAL	W01161501	DAK AJB
2	02/04/2016	BL	ISSUED FOR PADEP RESUBMITTAL	W01161501	AJB AJB
3	03/26/2016	BL	ISSUED FOR PADEP RESUBMITTAL	W01161501	AJB AJB
4	OCT. 2016	BL	PADEP TECHNICAL DEFICIENCY RESPONSE #1	W01161501	AJB AJB
5	April 2017	BL	PADEP TECHNICAL DEFICIENCY RESPONSE #2	W01161501	AJB AJB
6	August 2017	BL	PADEP TECHNICAL DEFICIENCY RESPONSE #3	W01161501	AJB AJB

ATLANTIC SUNRISE PROJECT- PROPOSED 30"/42" NATURAL GAS PIPELINE POST CONSTRUCTION STORMWATER MANAGEMENT PLANS FOR WEST DIAMOND REGULATOR STATION & ASSOCIATED PERMANENT ACCESS ROADS JACKSON/SUGARLOAF TOWNSHIPS, COLUMBIA COUNTY, PENNSYLVANIA COVER SHEET					
DRAWN BY:	JEC	DATE:	04/03/15	ISSUED FOR BID:	SCALE:
CHECKED BY:	AJB	DATE:	04/03/15	ISSUED FOR CONSTRUCTION:	REVISION:
APPROVED BY:	AJB	DATE:	07/17/15	DRAWING NUMBER:	(36-7943)MF-1A-9
W.O.:	1161501				SHEET 1 OF 8

### PCSM STANDARD NOTES

PERMIT TERMINATION  
UPON PERMANENT STABILIZATION OF THE EARTH DISTURBANCE ACTIVITY UNDER § 102.22(A)(2) (RELATING TO PERMANENT STABILIZATION), AND INSTALLATION OF BMPs IN ACCORDANCE WITH AN APPROVED PLAN PREPARED AND IMPLEMENTED IN ACCORDANCE WITH § 9.102.4 AND 102.8 (RELATING TO EROSION AND SEDIMENT CONTROL REQUIREMENTS, AND PCSM REQUIREMENTS), THE PERMITTEE OR CO-PERMITTEE SHALL SUBMIT A NOTICE OF TERMINATION TO THE DEPARTMENT OR CONSERVATION DISTRICT.

- THE NOTICE OF TERMINATION MUST INCLUDE:  
 (1) THE FACILITY NAME, ADDRESS AND LOCATION.  
 (2) THE OPERATOR NAME AND ADDRESS.  
 (3) THE PERMIT NUMBER.  
 (4) THE REASON FOR PERMIT TERMINATION.

(5) IDENTIFICATION OF THE PERSONS WHO HAVE AGREED TO AND WILL BE RESPONSIBLE FOR LONG-TERM OPERATION AND MAINTENANCE OF THE PCSM BMPs IN ACCORDANCE WITH § 102.8(M) AND PROOF OF COMPLIANCE WITH § 102.8(M)(2).

#### PCSM REQUIREMENTS

PCSM REPORTING AND RECORD KEEPING: THE PCSM PLAN, INSPECTION REPORTS AND MONITORING RECORDS SHALL BE AVAILABLE FOR REVIEW AND INSPECTION BY THE DEPARTMENT OR THE CONSERVATION DISTRICT.

LICENSED PROFESSIONAL OVSIGHT OF CRITICAL STAGES: A LICENSED PROFESSIONAL OR A DESIGNEE SHALL BE PRESENT ON-SITE AND BE RESPONSIBLE DURING CRITICAL STAGES OF IMPLEMENTATION OF THE APPROVED PCSM PLAN. THE CRITICAL STAGES MAY INCLUDE THE INSTALLATION OF UNDERGROUND TREATMENT OR STORAGE BMPs, STRUCTURALLY ENGINEERED BMPs, OR OTHER BMPs AS DEEMED APPROPRIATE BY THE DEPARTMENT OR THE CONSERVATION DISTRICT.

FINAL CERTIFICATION: THE PERMITTEE SHALL INCLUDE WITH THE NOTICE OF TERMINATION "RECORD DRAWINGS" WITH A FINAL CERTIFICATION STATEMENT FROM A LICENSED PROFESSIONAL, WHICH READS AS FOLLOWS: "I (NAME) DO HEREBY CERTIFY THAT THE PENALTIES OF 18 P.A.C.S.A. § 4904 TO THE BEST OF MY KNOWLEDGE, INFORMATION AND BELIEF, THAT THE ACCOMPANYING RECORD DRAWINGS ACCURATELY REFLECT THE AS-BUILT CONDITIONS, ARE TRUE AND CORRECT, AND ARE IN CONFORMANCE WITH CHAPTER 102 OF THE RULES AND REGULATIONS OF THE DEPARTMENT OF ENVIRONMENTAL PROTECTION AND THAT THE PROJECT SITE WAS CONSTRUCTED IN ACCORDANCE WITH THE APPROVED PCSM PLAN, ALL APPROVED PLAN CHANGES AND ACCEPTED CONSTRUCTION PRACTICES."

- (1) THE PERMITTEE SHALL RETAIN A COPY OF THE RECORD DRAWINGS AS A PART OF THE APPROVED PCSM PLAN.  
 (2) THE PERMITTEE SHALL PROVIDE A COPY OF THE RECORD DRAWINGS AS A PART OF THE APPROVED PCSM PLAN TO THE PERSON IDENTIFIED IN THIS SECTION AS BEING RESPONSIBLE FOR THE LONG-TERM OPERATION AND MAINTENANCE OF THE PCSM BMPs.

#### PCSM LONG TERM OPERATIONS AND MAINTENANCE REQUIREMENTS

UNTIL THE PERMITTEE OR CO-PERMITTEE HAS RECEIVED WRITTEN APPROVAL OF A NOTICE OF TERMINATION, THE PERMITTEE OR CO-PERMITTEE WILL REMAIN RESPONSIBLE FOR COMPLIANCE WITH THE PERMIT TERMS AND CONDITIONS INCLUDING LONG-TERM OPERATION AND MAINTENANCE OF ALL PCSM BMPs ON THE PROJECT SITE AND IS RESPONSIBLE FOR VIOLATIONS OCCURRING ON THE PROJECT SITE. THE DEPARTMENT OR CONSERVATION DISTRICT WILL CONDUCT A FINAL INSPECTION AND APPROVE OR DENY THE NOTICE OF TERMINATION WITHIN 30 DAYS.

THE PERMITTEE OR CO-PERMITTEE SHALL BE RESPONSIBLE FOR LONG-TERM OPERATION AND MAINTENANCE OF PCSM BMPs UNLESS A DIFFERENT PERSON IS IDENTIFIED IN THE NOTICE OF TERMINATION AND HAS AGREED TO LONG-TERM OPERATION AND MAINTENANCE OF PCSM BMPs.

FOR ANY PROPERTY CONTAINING A PCSM BMP, THE PERMITTEE OR CO-PERMITTEE SHALL RECORD AN INSTRUMENT WITH THE RECORDER OF DEEDS WHICH WILL ASSURE DISCLOSURE OF THE PCSM BMP AND THE RELATED OBLIGATIONS IN THE ORDINARY COURSE OF A TITLE SEARCH OF THE SUBJECT PROPERTY. THE RECORDED INSTRUMENT MUST IDENTIFY THE PCSM BMP, PROVIDE FOR NECESSARY EROSION CONTROL MEASURES TO PROTECT AND MAINTAIN THE PCSM BMPs AND PROVIDE NOTICE THAT THE RESPONSIBILITY FOR LONG-TERM OPERATION AND MAINTENANCE OF THE PCSM BMP IS A COVENANT THAT RUNS WITH THE LAND THAT IS BINDING UPON AND ENFORCEABLE BY SUCCESSOR GRANTEE, AND PROVIDE PROOF OF FILING WITH THE NOTICE OF TERMINATION UNDER § 102.7(B)(5) (RELATING TO PERMIT TERMINATION).

THE PERSON RESPONSIBLE FOR PERFORMING LONG-TERM OPERATION AND MAINTENANCE MAY ENTER INTO AN AGREEMENT WITH ANOTHER PERSON INCLUDING A CONSERVATION DISTRICT, NONPROFIT ORGANIZATION, MUNICIPALITY, AUTHORITY, PRIVATE CORPORATION OR OTHER PERSON, TO TRANSFER THE RESPONSIBILITY FOR PCSM BMPs OR TO PERFORM LONG-TERM OPERATION AND MAINTENANCE AND PROVIDE NOTICE THEREOF TO THE DEPARTMENT.

A PERMITTEE OR CO-PERMITTEE THAT FAILS TO TRANSFER LONG-TERM OPERATION AND MAINTENANCE OF THE PCSM BMP OR OTHERWISE FAILS TO COMPLY WITH THIS REQUIREMENT SHALL REMAIN JOINTLY AND SEVERALLY RESPONSIBLE WITH THE LANDOWNER FOR LONG-TERM OPERATION AND MAINTENANCE OF THE PCSM BMPs LOCATED ON THE PROPERTY.

CLEAN FILL IS DEFINED AS: UNCONTAMINATED, NON-WATER SOLUBLE, NON-DECOMPOSABLE, INERT, SOLID MATERIAL. THE TERM INCLUDES SOIL, ROCK, STONE, DREGGED MATERIAL, USED ASPHALT, AND BRICK, BLOCK OR CONCRETE FROM CONSTRUCTION AND DEMOLITION ACTIVITIES THAT IS SEPARATE FROM OTHER WASTE AND IS RECOGNIZABLE AS SUCH. THE TERM DOES NOT INCLUDE MATERIALS PLACED IN OR ON THE WATERS OF THE COMMONWEALTH UNLESS OTHERWISE AUTHORIZED. (THE TERM "USED ASPHALT" DOES NOT INCLUDE MILED ASPHALT OR ASPHALT THAT HAS BEEN PROCESSED FOR RE-USE.)

#### CLEAN FILL AFFECTED BY A SPILL OR RELEASE OF A REGULATED SUBSTANCE

FILL MATERIALS AFFECTED BY A SPILL OR RELEASE OF A REGULATED SUBSTANCE STILL QUALIFIES AS CLEAN FILL PROVIDED THE TESTING REVEALS THAT THE FILL MATERIAL CONTAINS CONCENTRATIONS OF REGULATED SUBSTANCES THAT ARE BELOW THE RESIDENTIAL LIMITS IN TABLES FP-1A AND FP-1B FOUND IN THE DEPARTMENT'S POLICY "MANAGEMENT OF FILL."

ANY PERSON PLACING CLEAN FILL THAT HAS BEEN AFFECTED BY A SPILL OR RELEASE OF A REGULATED SUBSTANCE MUST USE FORM FP-001 TO CERTIFY THE ORIGIN OF THE FILL MATERIAL AND THE RESULTS OF THE ANALYTICAL TESTING TO QUALIFY THE MATERIAL AS CLEAN FILL. FORM FP-001 MUST BE RETAINED BY THE OWNER OF THE PROPERTY RECEIVING THE FILL AND MUST BE KEPT ON SITE AND MADE AVAILABLE UPON REQUEST BY THE DEPARTMENT OR AUTHORIZED CONSERVATION DISTRICT. FAILURE TO PRODUCE THE FORM UPON REQUEST MAY RESULT IN THE REVOKING, SUSPENSION OR TERMINATION OF YOUR PERMIT COVERAGE. A COPY OF FORM FP-001 CAN BE FOUND AT THE END OF THESE INSTRUCTIONS.

#### ENVIRONMENTAL DUE DILIGENCE

INVESTIGATIVE TECHNIQUES, INCLUDING, BUT NOT LIMITED TO, VISUAL PROPERTY INSPECTIONS, ELECTRONIC DATA BASE SEARCHES, REVIEW OF PROPERTY OWNERSHIP, REVIEW OF PROPERTY USE HISTORY, SANBORN MAPS, ENVIRONMENTAL QUESTIONNAIRES, TRANSACTION SCREENS, ANALYTICAL TESTING, ENVIRONMENTAL ASSESSMENTS OR AUDITS. ANALYTICAL TESTING IS NOT A REQUIRED PART OF DUE DILIGENCE UNLESS VISUAL INSPECTION AND/OR REVIEW OF THE PAST LAND USE OF THE PROPERTY INDICATES THAT THE FILL MAY HAVE BEEN SUBJECTED TO A SPILL OR RELEASE OF REGULATED SUBSTANCE. IF THE FILL MAY HAVE BEEN AFFECTED BY A SPILL OR RELEASE OF A REGULATED SUBSTANCE, IT MUST BE TESTED TO DETERMINE IF IT QUALIFIES AS CLEAN FILL. TESTING SHOULD BE PERFORMED IN ACCORDANCE WITH APPENDIX A OF THE DEPARTMENT'S POLICY "MANAGEMENT OF FILL."

FILL MATERIAL THAT DOES NOT QUALIFY AS CLEAN FILL IS REGULATED FILL. REGULATED FILL IS WASTE AND MUST BE MANAGED IN ACCORDANCE WITH THE DEPARTMENT'S MUNICIPAL OR RESIDUAL WASTE REGULATIONS BASED ON 25 PA. CODE CHAPTERS 287 RESIDUAL WASTE MANAGEMENT OR 271 MUNICIPAL WASTE MANAGEMENT, WHICHEVER IS APPLICABLE.

### RECYCLING AND DISPOSAL OF MATERIALS

BUILDING MATERIALS AND OTHER CONSTRUCTION SITE WASTES MUST BE PROPERLY MANAGED AND DISPOSED OF TO REDUCE POTENTIAL FOR POLLUTION TO SURFACE AND GROUND WATERS AS PER 25 PA. CODE § 102.8(S)(5)(v). PROPER TRASH DISPOSAL, RECYCLING OF MATERIALS, PROPER MATERIALS HANDLING, AND SPILL PREVENTION AND CLEAN-UP REDUCE THE POTENTIAL FOR CONSTRUCTION SITE WASTES TO BE MOBILIZED BY STORMWATER RUNOFF AND CONVEYED TO SURFACE WATERS.

UNDER NO CIRCUMSTANCES MAY EROSION CONTROL BMPs BE USED FOR TEMPORARY STORAGE OF DEMOLITION MATERIALS OR CONSTRUCTION WASTES.

WHEREVER HEAVY EQUIPMENT WILL BE USED DURING CONSTRUCTION OF THE CUTS AND FILLS OR PROPOSED BUILDINGS, A POLLUTION PREVENTION AND CONTINGENCY (PPC) PLAN MUST BE AVAILABLE ON SITE. THE APPLICANT MUST PREPARE AND IMPLEMENT A PPC PLAN WHEN STORING, USING OR TRANSPORTING MATERIALS INCLUDING: FUELS, CHEMICALS, SOLVENTS, PESTICIDES, FERTILIZERS, LIME, PETROCHEMICALS, WASTEWATER, WASH WATER, CORE DRILLING WASTEWATER, CEMENT, SANITARY WASTES, SOLID WASTES, OR HAZARDOUS MATERIALS ONTO, ON, OR FROM THE PROJECT SITE DURING EARTH DISTURBANCE ACTIVITIES. THE PPC PLAN MUST BE AVAILABLE UPON REQUEST BY THE DEPARTMENT OR CONSERVATION DISTRICT. GUIDANCE FOR DEVELOPMENT OF A PPC PLAN CAN BE FOUND IN GUIDELINES FOR THE DEVELOPMENT AND IMPLEMENTATION OF ENVIRONMENTAL EMERGENCY RESPONSE PLANS (DOCUMENT #400-2200-001), WHICH CAN BE FOUND IN THE DEPARTMENT'S ELIBRARY AT [WWW.DEWELB.STATE.PA.US](http://WWW.DEWELB.STATE.PA.US).

SLILT, SEDIMENT, TRASH, CONSTRUCTION WASTES AND ALL OTHER WASTES GENERATED DURING OPERATION AND MAINTENANCE ACTIVITIES SHALL BE PROPERLY MANAGED AND DISPOSED OF IN ACCORDANCE WITH LOCAL, STATE AND FEDERAL REQUIREMENTS. ALL APPLICABLE FEDERAL, STATE, AND LOCAL LAWS AND REGULATIONS MUST BE FOLLOWED IN THE USE, HANDLING, AND DISPOSAL OF POTENTIALLY HAZARDOUS MATERIALS.

### RESPONSIBLE PARTY

OPERATION AND MAINTENANCE SHALL BE THE RESPONSIBILITY OF WILLIAMS (APPLICANT).

### OPERATIONS AND MAINTENANCE PROGRAM PERMANENT STORMWATER FACILITIES

THE PERMIT APPLICANT SHALL BE RESPONSIBLE FOR THE MAINTENANCE OF PERMANENT STORMWATER FACILITIES LOCATED ON THE SUBJECT PROPERTIES. PERMANENT MAINTENANCE OF THE STORM SYSTEM AFTER ACCEPTANCE WILL PRIMARILY CONSIST OF ROUTINE CLEANING OF ACCUMULATED SEDIMENT AND DEBRIS BY FACILITY STAFF OR PRIVATE CONTRACTORS. THE SPECIFIC MAINTENANCE STEPS AND SCHEDULE ARE LISTED BELOW:

- VEGETATED SWALES WITH EARTHEN CHECK DAMS**  
VEGETATED SWALES WITH EARTHEN CHECK DAMS ARE TO BE INSPECTED ANNUALLY FOR SEDIMENT, BUILD-UP, EROSION DEBRIS, AND DAMAGE DUE TO TRAFFIC. DIITCHES SHOULD BE MAINTAINED TO ENSURE THAT THE SPECIFIED DESIGN DIMENSIONS AND VEGETATIVE LINING ARE AVAILABLE AT ALL TIMES. NO MORE THAN ONE-THIRD OF THE SHOOT (GRASS LEAF) SHALL BE REMOVED IN ANY MOWING. GRASS HEIGHT SHALL BE MAINTAINED BETWEEN 3 AND 6 INCHES UNLESS OTHERWISE SPECIFIED. EXCESS VEGETATION SHALL BE REMOVED FROM PERMANENT CHANNELS TO ENSURE SUFFICIENT CHANNEL CAPACITY. ANY LITTER, DEBRIS, SEDIMENT, VEGETATION, OR OTHER ITEMS REMOVED DURING MAINTENANCE ACTIVITIES WILL BE DISPOSED OF IN A MANNER CONSISTENT WITH THE ESCQP-2 REQUIREMENTS.
- STORMWATER/INFILTRATION BASINS**  
INSPECT STORMWATER/INFILTRATION FACILITY ANNUALLY AND INSPECT SOIL, REPAIR ERODED AREAS AND REMOVE LITTER AND DEBRIS AS NEEDED. INSPECT TWICE A YEAR FOR SEDIMENT BUILDUP, EROSION AND VEGETATIVE CONDITIONS. REMOVE AND REPLACE DEAD AND DISEASED VEGETATION. ANY LITTER, DEBRIS, SEDIMENT, VEGETATION, OR OTHER ITEMS REMOVED DURING MAINTENANCE ACTIVITIES WILL BE DISPOSED OF IN A MANNER CONSISTENT WITH THE ESCQP-2 REQUIREMENTS. COMPACTION OF THE BASIN BOTTOM SHALL BE PREVENTED.
- MINIMIZE TOTAL DISTURBED AREAS**  
PROTECTED AREAS – RESTRICT VEHICLE ACCESS, DO NOT CLEAR VEGETATION, AVOID EARTH DISTURBANCE.  
• MINIMUM DISTURBANCE AREAS – RESTRICT VEHICLE ACCESS.  
• REPLANT SUITABLE SPECIES IN THE EVENT OF DEAD OR DYING VEGETATION. RESEED BARE AREAS AND INSTALL APPROPRIATE EROSION CONTROLS WHEN SOIL IS EXPOSED – AS NEEDED.  
• INSPECT AND ENSURE PROTECTED AREAS REMAIN UNDISTURBED AFTER CONSTRUCTION ACTIVITIES CEASE – BIANNUALLY
- DISCONNECTION FROM STORM SEWERS**  
DISCONNECTED IMPERVIOUS AREAS SHALL CONTINUE TO BE DIRECTED TO INFILTRATION AREAS AND VEGETATED SWALES AS SHOWN ON THE POST CONSTRUCTION STORMWATER MANAGEMENT PLANS. INFILTRATION AREAS AND VEGETATED SWALES SHALL BE MAINTAINED AS INDICATED ON THE POST CONSTRUCTION STORMWATER MANAGEMENT PLANS.
- SOIL AMENDMENTS AND RESTORATION**  
RESTRICT VEHICLE ACCESS. MONITOR WATER DRAIN DOWN TIME IN INFILTRATION AREAS AND REPLACE AMENDED SOILS IF DRAINING TIME INCREASES TO MORE THAN 5 DAYS. MAINTAIN INFILTRATION AREAS AS INDICATED ON THE POST CONSTRUCTION STORMWATER MANAGEMENT PLANS.
- REDUCE PARKING AREA/STREET IMPERVIOUSNESS**  
GRAVEL AREAS WILL BE MAINTAINED IN GOOD CONDITION AND WILL NOT BE PAVED WITHOUT OBTAINING PRIOR APPROVAL FROM THE DEP OR THE COUNTY CONSERVATION DISTRICT.
- LEVEL SPREADER**  
INSPECT AREA BELOW THE LEVEL SPREADER ON A QUARTERLY BASIS FOR THE FIRST TWO YEARS AFTER INSTALLATION AND ANNUALLY THEREAFTER. ALSO INSPECT AFTER EVERY STORM EVENT GREATER THAN 10 INCH. REMOVE SEDIMENT AND DEBRIS FROM THE LEVEL SPREADER WHEN IT INTERFERES WITH PROPER FUNCTION OR SEMIANNUALLY AT A MINIMUM. PREFERABLY THE DESIGNER SHOULD CHANNELIZE OR ERODED AREAS THAT DEVELOP BELOW THE LEVEL SPREADER. REGRADE ANY NEWLY OCCURRING AREAS WHERE WATER STANDS FOR LONGER THAN 72 HOURS. INSPECT VEGETATION BIWEEKLY FOR THE FIRST GROWING SEASON. CONDUCT HEALTH, DIVERSITY AND DENSITY INSPECTION TWICE A YEAR AFTER THE FIRST GROWING SEASON. REPLACE VEGETATION THAT FAILS TO ESTABLISH WITH ALTERNATE SPECIES. MAINTAIN VEGETATIVE COVER AT 85%.
- RAIN GARDEN**  
INSPECT THE RAIN GARDENS ANNUALLY AND INSPECT SOIL, LANDSCAPING, REPAIR ERODED AREAS AND REMOVE LITTER AND DEBRIS AS NEEDED. INSPECT TWICE A YEAR FOR SEDIMENT BUILDUP, EROSION AND VEGETATIVE CONDITIONS. REMOVE AND REPLACE DEAD AND DISEASED VEGETATION. ANY LITTER, DEBRIS, SEDIMENT, VEGETATION, OR OTHER ITEMS REMOVED DURING MAINTENANCE ACTIVITIES WILL BE DISPOSED OF IN A MANNER CONSISTENT WITH THE ESCQP-2 REQUIREMENTS.
- REFER TO THE TABLES BELOW FOR THE OPERATION AND MAINTENANCE OF POST CONSTRUCTION BEST MANAGEMENT PRACTICES.**
- ANNUAL CERTIFICATION OF MAINTENANCE PROCEDURES**  
THE FACILITY SHALL MAINTAIN A CHECKLIST WHENEVER THE STORM SYSTEM IS INSPECTED AND CLEANED. AN ANNUAL LIST OF INSPECTIONS AND MAJOR CLEANING OPERATIONS AND REPAIRS (PUMPING, SWEEPING PARKING LOTS, CLEANING CATCH BASIN Sumps ETC.) SHALL BE MAINTAINED. THE LOCAL OCD OR ENFORCEMENT OFFICIALS SHALL HAVE ACCESS TO THOSE RECORDS.
- ESQOP2 COMPLIANCE WITH ESCQP-2 REQUIREMENTS AND RECORD KEEPING FOR PERMANENT STORMWATER DISCHARGE AND MAINTENANCE AND OTHER APPLICABLE ESCQP-2 AND DEP REQUIREMENTS REGARDING DISCHARGES.**

#### VEGETATED SWALES WITH CHECK DAMS

OPERATION & MAINTENANCE PROCEDURES	
ACTIVITY	SCHEDULE
<i>PLANT ALTERNATIVE GRASS SPECIES IN THE EVENT OF UNSUCCESSFUL ESTABLISHMENT. RESEED BARE AREAS, ROTOTILL OR CULTIVATE THE SURFACE OF THE SAND/SOIL BED OF DRY SWALES IF THE SWALE DOES NOT DRAIN DOWN WITHIN 48 HOURS. WATER DURING DRY PERIODS, FERTILIZE, AND APPLY PESTICIDES WHEN NECESSARY. REMOVE SEDIMENT BUILD-UP WITHIN THE BOTTOM OF THE SWALE ONCE IT HAS ACCUMULATED TO 25% OF THE ORIGINAL DESIGN VOLUME, OR ONCE IT HAS COVERED VEGETATION.</i>	AS NEEDED
INSPECT AND CORRECT EROSION PROBLEMS, DAMAGE TO VEGETATION, DAMAGE TO CHECK DAMS, AND SEDIMENT AND DEBRIS ACCUMULATION. INSPECT GRASS ALONG SIDE SLOPES FOR EROSION, RILLS, OR GULLIES, & CORRECT. MOW AND TRIM VEGETATION TO ENSURE SAFETY. PROPER SWALE OPERATION, OR TO SUPPRESS WEEDS AND INVASIVE VEGETATION. INSPECT FOR POOLS OF STANDING WATER; DEWATER & DISCHARGE TO AN APPROVED LOCATION, RESTORE TO DESIGN GRADE. INSPECT FOR UNIFORMITY IN CROSS-SECTION & LONGITUDINAL SLOPE. CORRECT AS NEEDED. INSPECT SWALE INLET AND OUTLET FOR SIGNS OF EROSION OR BLOCKAGE. CORRECT AS NEEDED.	ANNUAL
INSPECT SWALE IMMEDIATELY AFTER SPRING MELT, REMOVE RESIDUALS, AND REPLACE DAMAGED VEGETATION. ROADSIDE OR PARKING LOT RUNOFF IS DIRECTED TO THE SWALE, MULCHING &/OR SOIL AERATION MAY BE REQUIRED IN THE SPRING TO RESTORE SOIL STRUCTURE & MOISTURE CAPACITY & TO REDUCE THE IMPACT OF DEICING AGENTS. USE NONTOKING, ORGANIC DEICING AGENTS. PLANT SALT TOLERANT VEGETATION IN SWALES.	ANNUAL - SPRING

#### MINIMIZE TOTAL DISTURBED AREA

OPERATION & MAINTENANCE PROCEDURES	
ACTIVITY	SCHEDULE
REPLANT SUITABLE SPECIES IN THE EVENT OF DEAD OR DYING VEGETATION. RESEED BARE AREAS AND INSTALL APPROPRIATE EROSION CONTROLS WHEN SOIL IS EXPOSED.	AS NEEDED
INSPECT AND ENSURE PROTECTED AREAS REMAIN UNDISTURBED AFTER CONSTRUCTION ACTIVITIES CEASE.	BIANNUALLY
MINIMUM DISTURBANCE AREA	RESTRICT VEHICLE ACCESS
PROTECTED AREAS	RESTRICT VEHICLE ACCESS, DO NOT CLEAR VEGETATION, AVOID EARTH DISTURBANCE

#### MINIMIZED TOTAL DISTURBED AREA NOTES

- THE PROTECTED AREA SHOULD NOT BE SUBJECT TO GRADING OR MOVEMENT OF EXISTING SOILS.
- EXISTING NATIVE VEGETATION IS NOT TO BE REMOVED WITHIN THE PROTECTED AREA.
- ADDITIONAL PLANTING OF NATIVE VEGETATION IS ALLOWED IN THE PROTECTED AREA.
- THE PROTECTED AREA WILL BE DELINEATED IN THE FIELD AND PROTECTED PRIOR TO ANY CONSTRUCTION ACTIVITIES TAKING PLACE.
- SHOULD THE PROTECTED AREA BECOME COMPACTED AND/OR DISTURBED, SOILS AMENDMENT AND RESTORATION MAY BE REQUIRED.

#### BIORETENTION/RAIN GARDEN

OPERATION & MAINTENANCE PROCEDURES	
ACTIVITY	SCHEDULE
INSPECT AND CORRECT EROSION PROBLEMS, DAMAGE TO VEGETATION, AND SEDIMENT AND DEBRIS ACCUMULATION. INSPECT GRASS ALONG SIDE SLOPES FOR EROSION, RILLS, OR GULLIES, & CORRECT. MOW AND TRIM VEGETATION TO ENSURE SAFETY. PROPER SWALE OPERATION, OR TO SUPPRESS WEEDS AND INVASIVE VEGETATION. INSPECT FOR POOLS OF STANDING WATER; DEWATER & DISCHARGE TO AN APPROVED LOCATION, RESTORE TO DESIGN GRADE. INSPECT FOR UNIFORMITY IN CROSS-SECTION & LONGITUDINAL SLOPE. CORRECT AS NEEDED. INSPECT SWALE INLET AND OUTLET FOR SIGNS OF EROSION OR BLOCKAGE. CORRECT AS NEEDED.	ANNUAL
INSPECT OUTLET CONTROL DEVICES AFTER EVERY MAJOR RAINFALL EVENT (>1 IN.) TO ENSURE FREE FLOW.	AS NEEDED
INSPECT SOIL & REPAIR ERODED AREAS, REMOVE LITTER AND DEBRIS	AS NEEDED
INSPECT FOR SEDIMENT BUILDUP, EROSION, VEGETATIVE CONDITIONS, REMOVE & REPLACE DEAD & DISEASED VEGETATION.	TWICE PER YEAR
GENERAL MAINTENANCE NOTES: 1. WHILE VEGETATION IS BEING ESTABLISHED, PRUNING AND WEEDING MAY BE REQUIRED. 2. DURING PERIODS OF EXTENDED DROUGHT, BIORETENTION AREAS MAY REQUIRE WATERING.	

#### SOIL AMENDMENT & RESTORATION

OPERATION & MAINTENANCE PROCEDURES	
ACTIVITY	SCHEDULE
RESTRICT VEHICLE ACCESS	AT ALL TIMES
ENSURE THAT INFILTRATION AREAS DEWATER BETWEEN STORMS. REPLACE AMENDED SOILS IF DRAINING TIME INCREASES TO MORE THAN THREE DAYS.	ANNUAL
INSPECT AND MAINTAIN INFILTRATION AREAS	AS NEEDED
GENERAL MAINTENANCE NOTES: THE SOIL RESTORATION PROCESS MAY NEED TO BE REPEATED OVER TIME, DUE TO COMPACTION BY USE AND/OR SETTLING.	

#### DISCONNECTION FROM STORM SEWERS

OPERATION & MAINTENANCE PROCEDURES	
ACTIVITY	SCHEDULE
INSPECT AND MAINTAIN GRADE TO ENSURE DISCONNECTED IMPERVIOUS AREAS CONTINUE TO BE DIRECTED TO INFILTRATION AREAS AND VEGETATED SWALES	ANNUAL
PARKING/STREET AREA IMPERVIOUSNESS	
OPERATION & MAINTENANCE PROCEDURES	
ACTIVITY	SCHEDULE
INSPECT AND MAINTAIN GRAVEL AREAS	AS NEEDED

### SOIL AMENDMENT NOTES

NOTES:

- AMENDED SOIL MIX SHALL CONSIST OF 33% ORGANIC MATTER (COMPOST) AND 67% SOIL BASE (TOPSOIL) (2:1 SOIL TO COMPOST RATIO). SOIL SHALL HAVE A CLAY CONTENT OF LESS THAN 10% AND BE FREE OF TOXIC SUBSTANCES.
- CONSTRUCT ONLY AFTER UPSTREAM AREAS HAVE BEEN STABILIZED OR DIVERT RUNOFF DURING CONSTRUCTION.
- SOILS AMENDMENT AND RESTORATION SHOULD NOT TAKE PLACE WITHIN THE DRIP LINE OF TREES OR TREE LINES.
- SOILS AMENDMENT AND RESTORATION SHOULD NOT TAKE PLACE OVER UTILITY INSTALLATIONS WITHIN 30 INCHES OF THE SURFACE.
- SOILS AMENDMENT AND RESTORATION SHOULD NOT TAKE PLACE WHERE TRENCHING OR DRAINAGE LINES ARE INSTALLED.
- SOILS AMENDMENT AND RESTORATION SHOULD NOT TAKE PLACE WHERE COMPACTION OF THE SOILS BY DESIGN IS REQUIRED.
- THE METHODOLOGY SHOULD BE PERFORMED WHEN THE SOIL CONDITIONS ARE DRY.
- ONSITE SOILS WITH AN ORGANIC CONTENT OF AT LEAST 5% CAN BE PROPERLY STOCKPILED (TO MAINTAIN ORGANIC CONTENTS) AND REUSED.
- PROCEDURE ROTOTILL, OR RIP THE SUBGRADE, REMOVE ROCKS, DISTRIBUTE THE COMPOST, SPREAD THE NUTRIENTS, ROTOTILL AGAIN.
- ADD 6" COMPOST/AMENDMENT AND TILL UP TO 8" FOR MINOR COMPACTION.
- ADD 10" COMPOST/AMENDMENT AND TILL UP TO 20" FOR MAJOR COMPACTION.
- INSTALL PERMANENT SEED MIXTURE (MEADOW)

AMENDED SOIL PARAMETERS			
SOIL TEXTURE	IDEAL BULK DENSITIES g/cm <sup>3</sup>	BULK DENSITIES THAT MAY AFFECT ROOT GROWTH g/cm <sup>3</sup>	BULK DENSITIES THAT RESTRICT ROOT GROWTH g/cm <sup>3</sup>
SANDS, LOAMY SANDS	< 1.60	1.69	1.80
SANDY LOAMS, LOAMS	< 1.40	1.63	1.80
SANDY CLAY LOAMS, LOAMS, CLAY LOAMS	< 1.40	1.60	1.75
SILT, SILT LOAMS	< 1.30	1.60	1.75
SOIL LOAMS, SILTY CLAY LOAMS	< 1.10	1.55	1.65
SANDY CLAYS, SILTY CLAYS, SOME CLAY LOAMS (35-45% CLAY)	< 1.10	1.49	1.58
CLAYS (> 45% CLAY)	< 1.10	1.39	1.47

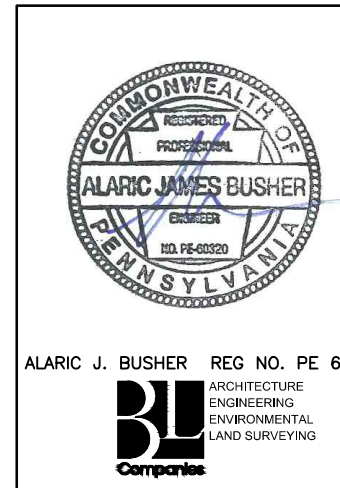
### GENERAL LANDSCAPE NOTES

- GUARANTEE:** GUARANTEE ALL PLANTS AND LAWNS FOR A MINIMUM OF 1 YEAR TO BE ALIVE AND IN VIGOROUS GROWING CONDITION AT THE END OF THE GUARANTEE PERIOD. THE GUARANTEE PERIOD FOR ALL PLANTS SHALL BEGIN UPON APPROVAL AS SPECIFIED UNDER SUBSTANTIAL COMPLETION. PLANT MATERIALS AND LAWNS APPROVED IN THE SPRING SHALL BE ALIVE AND IN SATISFACTORY GROWTH ON JUNE 1 OF THE FOLLOWING YEAR; PLANTING DONE IN LATE FALL (AFTER NOVEMBER 1ST) SHALL BE MAINTAINED AND GUARANTEED UNTIL THE SPRING'S LEAFING AFTER THE SECOND YEAR. REPLACEMENTS: ALL PLANTS SHALL BE FREE OF DEAD OR DYING BRANCHES AND BRANCH TIPS, AND SHALL BEAR FOLIAGE OF A NORMAL DENSITY, SIZE AND COLOR. PROMPTLY REMOVE DEAD, UNSIGHTLY, UNHEALTHY, OR EXCESSIVELY PRUNED PLANTS. THESE AND ANY PLANTS MISSING DUE TO THE CONTRACTOR'S NEGLIGENCE, SHALL BE REPLACED OR ADDED WITH THE SAME KIND AND SIZE AS ORIGINALLY SPECIFIED AS SOON AS CONDITIONS PERMIT. METHOD OF REPLACEMENT SHALL BE THE SAME AS SPECIFIED FOR THE ORIGINAL PLANTING WITH REPLACEMENTS MATCHING ADJACENT SPECIMENS OF THE SAME SPECIES. REPLACEMENTS SHALL BE MADE AS MANY TIMES AS NECESSARY TO ENSURE HEALTHY PLANTS AND THEY SHALL BE MAINTAINED AND GUARANTEED. REPLACEMENTS SHALL BE MADE AT THE CONTRACTOR'S EXPENSE AND SHALL BE GUARANTEED FOR TWO FULL YEARS FROM TIME OF REPLACEMENT. PLANTS SHALL BE OTHERWISE PROTECTED AND MAINTAINED, INCLUDING, BUT NOT LIMITED TO, WATER AND SHADE. ANY PLANTS DEEMED NOT IN SATISFACTORY HEALTH OF CONDITION AT THE TIME OF PLANTING SHALL BE REPLACED AT THE CONTRACTOR'S EXPENSE.
- THE CONTRACTOR SHALL SUPPLY ALL LABOR AND MATERIALS IN QUANTITIES SUFFICIENT TO COMPLETE THE WORK SHOWN ON THE DRAWINGS AND LISTED IN THE PLANT SCHEDULE.
- UTILITY LOCATIONS SHOWN IN THE DRAWINGS ARE APPROXIMATE. EXERCISE CARE WHEN DIGGING IN AREAS OF POTENTIAL CONFLICT WITH UNDERGROUND OR OVERHEAD UTILITIES. THE CONTRACTOR IS RESPONSIBLE FOR ANY DAMAGE DUE TO CONTRACTOR'S NEGLIGENCE AND SHALL REPLACE OR REPAIR ANY DAMAGE AT CONTRACTOR'S EXPENSE.
- FOR ALL PLANTING AND LAWN AREAS, CONTRACTOR SHALL EXCAVATE EXISTING SOIL TO PROVIDE A MINIMUM OF 4" OF PLANTING TOPSOIL MIX FROM FINISHED PLANTING ELEVATION. CONTRACTOR SHALL SUBMIT TOPSOIL TO A CERTIFIED TESTING LABORATORY TO DETERMINE pH, FERTILITY, ORGANIC CONTENT AND MECHANICAL COMPOSITION. THE CONTRACTOR SHALL SUBMIT THE TEST RESULTS FROM REGIONAL EXTENSION OFFICE OF USDA TO THE OWNER OR LANDSCAPE ARCHITECT FOR REVIEW AND APPROVAL. CONTRACTOR SHALL INCORPORATE AMENDMENTS FOR GOOD PLANT GROWTH AND PROPER SOIL ACIDITY RECOMMENDED FROM THE TOPSOIL TEST AT NO INCREASE IN CONTRACT PRICE.
- ALL LANDSCAPING SHALL BE PERPETUALLY MAINTAINED BY THE PROPERTY OWNER. ANY LANDSCAPING NEEDED TO MEET AN ORDINANCE REQUIREMENT THAT DIES, IS REMOVED, OR IS SEVERELY DAMAGED SHALL BE REPLACED BY THE CURRENT PROPERTY OWNER AS SOON AS IS PRACTICAL CONSIDERING GROWING SEASONS, WITHIN A MAXIMUM OF 150 DAYS.
- AT ALL TIMES, THE SITE SHALL BE KEPT NEAT AND SHALL BE KEPT FREE OF DEBRIS LEFT FROM THE PLANTING OPERATION.
- ALL DISTURBED LANDSCAPE AREAS ARE TO BE RESEDED.
- DURING THE CONSTRUCTION AND GUARANTEE PERIOD, WATER LAWN AT THE MINIMUM RATE OF 1 INCH (25 MM) PER WEEK. MOW LAWNS AS SOON AS THERE IS ENOUGH TOP GROWTH TO WITH MOWER SET AT SPECIFIED HEIGHT FOR PRINCIPAL SPECIES PLANTED. REPEAT MOWING AS REQUIRED TO MAINTAIN SPECIFIED HEIGHT WITHOUT CUTTING MORE THAN 40 PERCENT OF GRASS HEIGHT. REMOVE NO MORE THAN 40 PERCENT OF GRASS-LEAF GROWTH IN INITIAL OR SUBSEQUENT MOWINGS. DO NOT DELAY MOWING UNTIL GRASS BLADES BEND OVER AND BECOME MATTED. DO NOT MOW WHEN GRASS IS WET.
- ALL DISTURBED AREAS WITHIN 50' OF A STREAM CROSSING (WHERE THE STREAM WIDTH IS LESS THAN OR EQUAL 10') SHALL BE STABILIZED WITHIN 24 HOURS OF COMPLETING CONSTRUCTION AT THE CROSSING.
- ALL DISTURBED AREAS WITHIN 50' OF A STREAM CROSSING (WHERE THE STREAM WIDTH > 10') SHALL BE STABILIZED WITHIN 48 HOURS OF COMPLETING CONSTRUCTION AT THE CROSSING.

LEVEL SPREADER	
OPERATION & MAINTENANCE PROCEDURES	
ACTIVITY	SCHEDULE
THE RECEIVING LAND AREA SHOULD BE IMMEDIATELY RESTORED TO DESIGN CONDITIONS AFTER ANY DISTURBANCE. SEDIMENT & DEBRIS SHOULD BE ROUTINELY REMOVED.	AS NEEDED
INSPECTIONS SHALL BE MADE FOLLOWING RAINFALL EVENTS EXCEEDING 1-INCH.	AS NEEDED
MONITOR THE PERFORMANCE OF THE LEVEL SPREADER. THE AREA BELOW A LEVEL SPREADER SHOULD BE INSPECTED FOR CLOGGING, DENSITY OF VEGETATION, DAMAGE BY FOOT OR SEHICULAR TRAFFIC, EXCESSIVE ACCUMULATIONS, & CHANNELIZATION.	FOUR TIMES PER YEAR FOR THE FIRST TWO YEARS; SEMIANNUAL THEREAFTER
CATCH BASINS & INLETS DRAINING TO A LEVEL SPREADER SHOULD BE INSPECTED & CLEANED. UNWANTED OR INVASIVE GROWTH SHOULD BE REMOVED.	ANNUAL
GENERAL MAINTENANCE NOTES: 1. IT IS CRITICAL THAT EVEN SHEET FLOW CONDITIONS ARE STABILIZED THROUGHOUT THE LIFE OF THE LEVEL SPREADER, AS THEIR EFFECTIVENESS CAN DEGRADATE DUE TO LACK OF MAINTENANCE, INADEQUATE DESIGN/LOCATION, AND/OR POOR VEGETATIVE COVER. 2. IN NO CASE SHOULD STANDING WATER BE ALLOWED ALONG SLOPES FOR LONGER THAN 72 HOURS. 3. MAINTAINING A VIGOROUS VEGETATIVE COVER ON THE AREAS BELOW A LEVEL SPREADER IS CRITICAL FOR MAXIMIZING POLLUTANT REMOVAL EFFICIENCY & EROSION PREVENTION. 4. PRIOR TO PLACING THE LEVEL SPREADER INTO SERVICE, A QUALIFIED PROFESSIONAL, PREFERABLY THE DESIGNER, SHOULD INSPECT THE STRUCTURE ONCE IT IS FULLY CONSTRUCTED SO THAT NECESSARY ADJUSTMENTS OR REPAIRS CAN BE MADE BEFORE THE CONTRACTOR LEAVES THE SITE. 5. MONITORING SHOULD BE DOCUMENTED IN INSPECTION REPORTS SUBMITTED TO THE CONSERVATION DISTRICT ALONG WITH A SUMMARY OF ANY REPAIRS OR ADJUSTMENTS COMPLETED. MODIFICATIONS MAY NEED PRIOR APPROVAL. AS-BUILT DRAWINGS SHALL BE SUBMITTED BY THE END OF THE 2-YEAR MONITORING PERIOD. VERIFYING THAT THE LEVEL SPREADER WAS BUILT AS DESIGNED AND PERFORMING AS INTENDED.	

#### WATER QUALITY INSERT (SNOUT)

OPERATION & MAINTENANCE PROCEDURES	
ACTIVITY	SCHEDULE
MONTHLY MONITORING SHOULD OCCUR FOR THE FIRST YEAR OF NEW INSTALLATION AFTER THE SITE HAS BEEN STABILIZED.	MONTHLY
THE STRUCTURE SHOULD BE CLEANED WITH A VACUUM TRUCK WHEN THE SUMP IS HALF FULL.	AS NEEDED
THE STRUCTURE SHOULD BE CLEANED WITH A VACUUM TRUCK IF A SPILL OR OTHER INCIDENT CAUSES A LARGER THAN NORMAL ACCUMULATION OF POLLUTANTS IN THE STRUCTURE.	AS NEEDED
INSPECT HOODS AND ANTI-SIPHON VENT AND ACCESS HATCH, FLUSH THE VENT AND OPEN AND CLOSE THE HATCH.	ANNUALLY



ALARIC J. BUSHER REG. NO. PE 60320  
 ALARIC J. BUSHER  
 P.E., P.L.L.C.  
 ENGINEERING  
 ENVIRONMENTAL  
 LAND SURVEYING

REVISIONS				NO. NO. CHK. APP.	
NO.	DATE	BY	DESCRIPTION	NO. NO.	CHK. APP.
0	08/26/2015	BL	ISSUED FOR PADEP PERMIT SUBMITTAL	W01161501	DAK A.B
1	12/02/2015	BL	ISSUED FOR PADEP RESUBMITTAL	W01161501	DAK A.B
2	02/04/2016	BL	ISSUED FOR PADEP RESUBMITTAL	W01161501	A.B. A.B
3	03/26/2016	BL	ISSUED FOR PADEP RESUBMITTAL	W01161501	A.B. A.B
4	OCT. 2016	BL	PADEP TECHNICAL DEFICIENCY RESPONSE #1	W01161501	A.B. A.B
6	August 2017	BL	PADEP TECHNICAL DEFICIENCY RESPONSE #2	W01161501	A.B. A.B
6	August 2017	BL	PADEP TECHNICAL DEFICIENCY RESPONSE #3	W01161501	A.B. A.B

TRANSCONTINENTAL GAS PIPE LINE COMPANY, LLC					
ATLANTIC SUNRISE PROJECT- PROPOSED 30"/42" NATURAL GAS PIPELINE					
POST CONSTRUCTION STORMWATER MANAGEMENT PLANS FOR WEST					
DIAMOND REGULATOR STATION & ASSOCIATED PERMANENT ACCESS ROADS					
JACKSON/SUGARLOAF TOWNSHIPS, COLUMBIA COUNTY, PENNSYLVANIA					
PCSM NOTES AND DETAILS					
DRAWN BY:	JEC	DATE:	04/03/15	ISSUED FOR BID:	SCALE: AS NOTED
CHECKED BY:	A.B	DATE:	04/0		

**EARTH DISTURBANCE ACTIVITY - PAST, PRESENT, AND FUTURE LAND USES**

THE LAND USES AND AQUATIC FEATURES FOUND WITHIN THE PROJECT AREA OCCUR ON MIXED HARDWOOD UPLAND FOREST, AND SHALLOW FORESTED WETLANDS. ACCORDING TO THE MAJORITY PROVIDED BY THE PENNSYLVANIA GEOLOGICAL SURVEY, THE LAND USES WITHIN THE PROJECT AREA REMAINED SIMILAR BETWEEN 1939 AND 1967. THE LAND USES ON THE 1939 AERIALS WERE PRIMARILY COMPOSED OF MIXED HARDWOOD UPLAND FOREST. FUTURE LAND USE WOULD INVOLVE THE INSTALLATION OF THE REGULATOR STATION PAD AND ACCESS ROAD.

**THERMAL IMPACT ANALYSIS**

THERMAL IMPACTS ASSOCIATED WITH OPL NORTH, OPL SOUTH, AND ASSOCIATED FACILITIES WILL BE AVOIDED TO THE MAXIMUM EXTENT PRACTICABLE. THE FOLLOWING PROVISIONS RELATED TO THERMAL IMPACTS ARE INCLUDED IN THE E&SC PLAN WITHIN SECTION 2 OF THE ESCGP-2 NOI:

- THE MINIMUM PERMANENT CHANGES IN LAND COVER, NECESSARY TO CONSTRUCT THE REQUIRED FACILITIES ARE BEING PROPOSED.
- RUNOFF FROM THE PERMANENT IMPERVIOUS AREAS WILL BE COLLECTED AS PART OF THE POST CONSTRUCTION STORMWATER MANAGEMENT/SITE RESTORATION (PCSM/SR) PLAN AND ROUTED TO PCSM/SR BMPs. IN ADDITION, IMPERVIOUS AREAS WILL BE GRAVEL INSTEAD OF ASPHALT WHEREVER PRACTICAL.
- PCSM/SR BMPs INCORPORATE THE USE OF A RAIN GARDEN AND VEGETATED SWALES WITH EARTHEN CHECK DAMS WILL BE UTILIZED FOR STORMWATER RATE CONTROL.
- THE REMOVAL OF VEGETATION, ESPECIALLY TREE COVER, WILL BE LIMITED TO ONLY THAT NECESSARY FOR CONSTRUCTION.
- THE AMOUNT OF IMPERVIOUS SURFACES WILL BE LIMITED TO ONLY THAT NECESSARY TO SUPPORT THE CONSTRUCTION OF THE FACILITY AND ASSOCIATED PIPELINE.

**CRITICAL STAGES OF CONSTRUCTION**

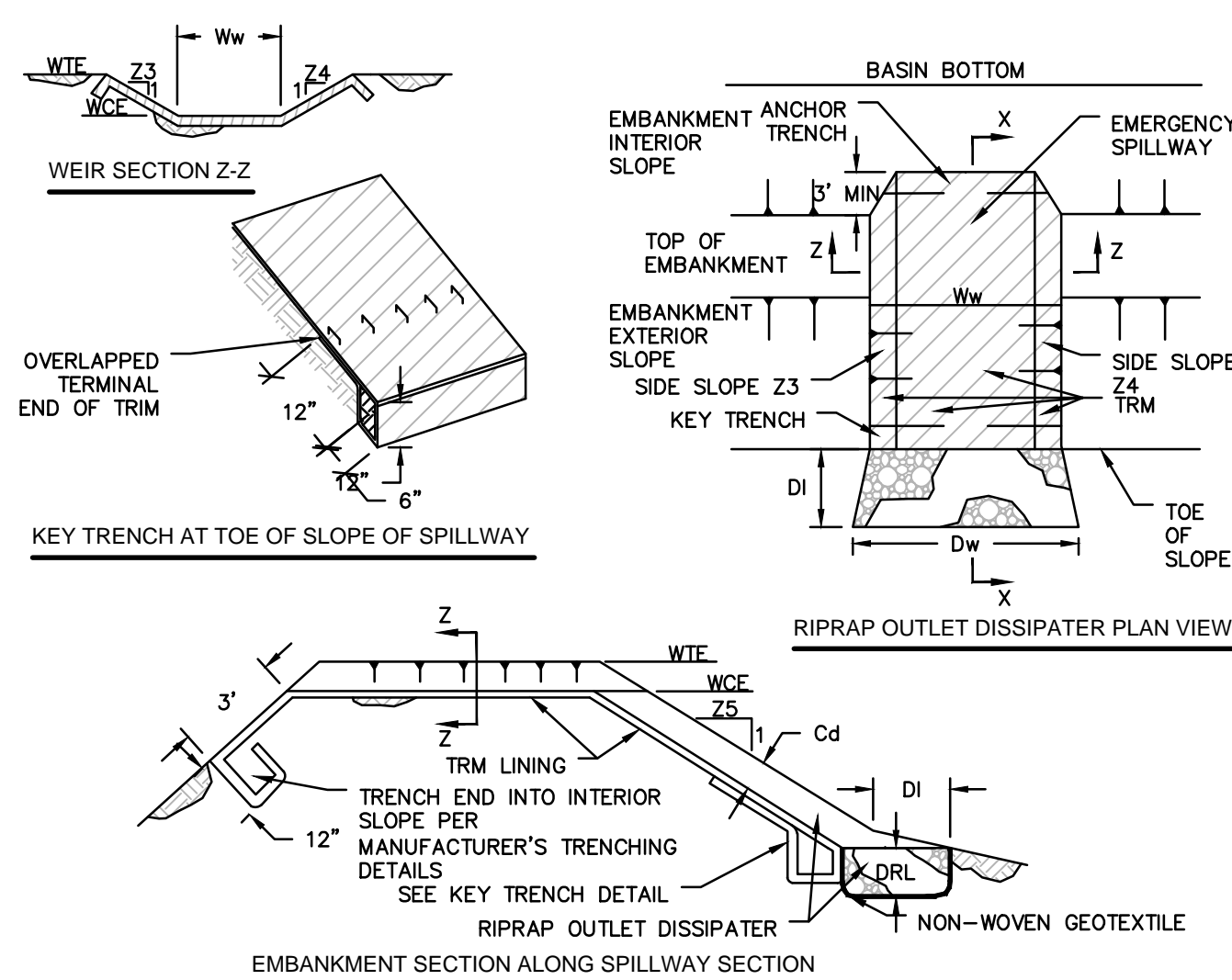
THE FOLLOWING ARE CRITICAL STAGES OF CONSTRUCTION:

- INSTALLATION OF SEDIMENT TRAP.
- CONVERSION SEDIMENT TRAP TO RAIN GARDEN #1.
- INSTALLATION OF RAIN GARDEN #2.
- INSTALLATION OF VEGETATED SWALE AND CHECK DAMS.
- SOIL AMENDMENT.
- LANDSCAPE RESTORATION.

**REGULATOR STATION SEQUENCE OF CONSTRUCTION**

- AT LEAST 7 DAYS PRIOR TO STARTING ANY EARTH DISTURBANCE ACTIVITIES, INCLUDING CLEARING AND GRUBBING, THE OWNER AND/OR OPERATOR SHALL INVITE ALL CONTRACTORS, ENVIRONMENTAL INSPECTORS, THE LANDOWNER, APPROPRIATE MUNICIPAL OFFICIALS, THE E&S PLAN PREPARER, THE PCSM PLAN PREPARER, THE LICENSED PROFESSIONAL RESPONSIBLE FOR OVERSIGHT OF CRITICAL STAGES OF IMPLEMENTATION OF THE PCSM PLAN, AND A REPRESENTATIVE FROM THE LOCAL CONSERVATION DISTRICT TO AN ON-SITE PRECONSTRUCTION MEETING.
- AT LEAST 3 DAYS PRIOR TO STARTING ANY EARTH DISTURBANCE ACTIVITIES, OR EXPANDING INTO AN AREA PREVIOUSLY UNMARKED, THE PENNSYLVANIA ONE CALL SYSTEM INC. SHALL BE NOTIFIED AT 1-800-242-1776 FOR THE LOCATION OF EXISTING UNDERGROUND UTILITIES.
- INSTALL ORANGE CONSTRUCTION FENCE AROUND AREAS TO BE PROTECTED.
- LOCATE STAGING AREAS AND ACCESS POINTS INCLUDING CONSTRUCTION ENTRANCES. FIELD LOCATE LIMITS OF DISTURBANCE.
- INSTALL ROCK CONSTRUCTION ENTRANCE (RCE) AT TEMPORARY ACCESS ROAD.
- REMOVE BRUSH TO EFFECTIVELY INSTALL PERIMETER CONTROLS, LEVEL SIDE CUTS TO GRANT ACCESS FOR VEHICLES AND WORKERS TO SAFELY PERFORM THE INSTALLATION OF SEDIMENT BARRIERS ON THE SITE AS SHOWN ON THE CONSTRUCTION DRAWINGS.
- THE COMPLIANCE MANAGER SHALL PROVIDE PADEP AND CCD AT LEAST THREE DAYS' NOTICE PRIOR TO BULK EARTH DISTURBANCE AND UPON COMPLETED INSTALLATION OF PERIMETER EROSION CONTROL MEASURES.
- INSTALL TEMPORARY ACCESS ROAD, CONSTRUCTION OF TEMPORARY ACCESS ROAD SHALL BE FULLY COMPLETED AND STABILIZED PRIOR TO ANY ADDITIONAL DISTURBANCE OCCURS ON SITE.
- INSTALL WATERBARS. ANY E&SC BMPs ASSOCIATED WITH THE CONSTRUCTION OF THE PIPELINE SHOULD REMAIN IN PLACE UNTIL CONSTRUCTION OF PIPELINE AND FACILITY IS COMPLETED AND THE AREAS ARE STABILIZED.
- \* INSTALL SEDIMENT TRAP WITH TEMPORARY ORIFICE CONFIGURATION, INCLUDING CLAY CORE, ANTISEEP COLLARS, SLOPE LINERS, CLEANOUT STAKE, AND ASSOCIATED IMPROVEMENTS. INSTALL ORANGE CONSTRUCTION FENCE AT PERIMETER OF TRAP TO PREVENT COMPACTION OF SOILS.
- PROCEED WITH MAJOR CLEARING AND GRUBBING.
- BEGIN CONSTRUCTION STAKING FOR GRADING.
- BEGIN GRADING AND STRIP AND STOCKPILE TOPSOIL WITHIN THE REGULATOR STATION AREA AND INSTALL SEDIMENT BARRIERS AROUND STOCKPILES.
- UPON TEMPORARY CESSATION OF AN EARTH DISTURBANCE ACTIVITY OR ANY STAGE OF AN ACTIVITY WHERE THE CESSATION OF EARTH DISTURBANCE ACTIVITIES WILL EXCEED FOUR DAYS, THE SITE SHALL BE IMMEDIATELY SEEDED, MULCHED, OR OTHERWISE PROTECTED FROM ACCELERATED EROSION AND SEDIMENTATION PENDING FUTURE EARTH DISTURBANCE ACTIVITIES. FOR AN EARTH DISTURBANCE ACTIVITY OR ANY STAGE OF AN ACTIVITY TO BE CONSIDERED TEMPORARILY STABILIZED, THE DISTURBED AREAS SHALL BE COVERED WITH ONE OF THE FOLLOWING: A MINIMUM UNIFORM COVERAGE OF MULCH AND SEED, WITH A DENSITY CAPABLE OF RESISTING ACCELERATED EROSION AND SEDIMENTATION, OR AN ACCEPTABLE BMP WHICH TEMPORARILY MINIMIZES ACCELERATED EROSION AND SEDIMENTATION. TEMPORARY STABILIZATION WILL NOT OCCUR ON ACTIVE VEHICULAR TRAVEL WAYS WITHIN THE ROW. THE ON-SITE ENVIRONMENTAL INSPECTOR WILL LOG DAILY ACTIVITY WITHIN THE LOD AND NOTIFY THE CONTRACTOR OF AREAS REQUIRING TEMPORARY STABILIZATION (I.E., AREAS WHERE WORK HAS CEASED FOR AT LEAST FOUR DAYS).
- ROUGH GRADE SITE.
- GRADE THE REGULATOR STATION PAD AS SHOWN ON THE E&SC AND PCSM/SR PLANS (SECTIONS 2 AND 3 OF THE ESCGP-2 NOI).
- IMMEDIATELY STABILIZE SIDE SLOPE WITH EROSION CONTROL MATTING WHEN SLOPES ARE 3:1 OR GREATER. SEE PCSM/SR PLANS AND DETAIL SHEETS, AS PROVIDED IN SECTION 3 OF THE ESCGP-2 NOI, (PATTERNS DIFFER BY SLOPE CATEGORY). INSTALL RIP RAP SLOPE STABILIZATION WHERE SHOWN ON THE PCSM/SR PLANS.
- ESTABLISH FINAL GRADE.
- SURFACE STABILIZATION, APPLY PERMANENT STABILIZATION MEASURES IMMEDIATELY TO ANY DISTURBED AREAS WHERE WORK HAS REACHED FINAL GRADE.
- CONSTRUCT REMAINDER OF STORMWATER MANAGEMENT BASIN 1 AREA. ALL EARTH MOVING ASSOCIATED WITH THIS WORK SHALL BE COMPLETED PRIOR TO CONVERTING TEMPORARY RISER TO THE PERMANENT RISER CONFIGURATION. ANY EXCESS EXCAVATION MATERIAL THAT WILL NOT BE USED ON-SITE SHALL BE HAULED OFF-SITE.
- UPON COMPLETION OF ALL EARTHWORK ACTIVITIES AND PERMANENT STABILIZATION OF ALL DISTURBED AREAS, THE OWNER AND/OR OPERATORS SHALL CONTACT THE LOCAL CCD FOR AN INSPECTION PRIOR TO THE REMOVAL/CONVERSION OF THE E&SC BMPs.
- \* CONVERT TRAP TO PERMANENT BASIN 1 CONFIGURATION BY REMOVING ALL ACCUMULATED SEDIMENTS, REMOVING BAFFLES, INSTALLING UNDERDRAINS AND ENGINEERED SOILS ON BASIN BOTTOM, IMMEDIATELY SEED AND STABILIZE BASIN, INSTALL ECB ON BASIN SLOPES AND INSTALL CFS AT INTERIOR TOE OF SLOPE. HAUL OFF SITE ANY EXCESS MATERIAL NOT USED AND LEFT OVER FROM THE CONVERSION OF THE BASIN.
- \* RECONFIGURE TEMPORARY RISER TO PERMANENT OUTLET STRUCTURE BY PERMANENTLY SEALING THE 1" ORIFICES, CLEAN OUT SUMP, INSTALL EMERGENCY SPILLWAY AND SNOOT OVER OUTFALL.
- \* ONCE CONSTRUCTION FOR THE REGULATOR STATION AND THE PIPELINE IS COMPLETE AND THE AREAS ARE STABILIZED, INSTALL PERMANENT ACCESS ROAD AND ASSOCIATED BMPs (RCE, VEGETATED ROADSIDE SWALES WITH EARTHEN CHECK DAMS, AMENDED SOILS, EROSION CONTROL BLANKET, RAIN GARDEN 2, CULVERTS, WATER DEFLECTORS, AND RIP RAP OUTLET PROTECTION). ANY PORTIONS OF WATERBARS ASSOCIATED WITH THE PIPELINE CONSTRUCTION THAT ARE IMPACTED BY THE CONSTRUCTION OF THE PERMANENT ACCESS ROAD SHOULD BE REMOVED.
- REMOVE TEMPORARY ACCESS ROAD, RESTORE TEMPORARY ACCESS ROAD AREA TO PRE-DEVELOPMENT GRADES. IMMEDIATELY DECOMPACT, SEED AND STABILIZE AREA DISTURBED DURING REMOVAL OF ACCESS ROAD.
- AMEND SOILS THROUGHOUT REMAINDER OF SITE. IMMEDIATELY SEED AND STABILIZE.
- AFTER FINISH GRADING AND TOPSOIL PLACEMENT IS COMPLETED, DISTURBED AREAS SHALL BE FERTILIZED, SEEDED, AND MULCHED. SEED MIXTURES, FERTILIZER AND MULCH APPLICATIONS RATES AND DATES SHALL CONFORM TO THE TABLES PROVIDED ON THE PCSM/SR PLANS AND DETAIL SHEETS (SECTION 3 OF THE ESCGP-2 NOI), LAND OWNER AGREEMENTS AND/OR THE ECP (SECTION 4 OF THE ESCGP-2 NOI).
- AFTER SEEDING, FERTILIZING AND MULCHING IS COMPLETE, INSTALL ECBs AS REQUIRED OR ORDERED OR ON SLOPES OF 3:1 OR GREATER.
- AFTER THE SITE IS PERMANENTLY STABILIZED AND UPON PADEP OR LOCAL CCD AND OWNER APPROVAL OF STABILIZATION AND RE-VEGETATION, REMOVE TEMPORARY EROSION AND SEDIMENT CONTROL MEASURES AND STABILIZE AREAS DISTURBED BY REMOVAL.
- \* COMPLETE SITE STABILIZATION, INCLUDING SOIL AMENDMENT, SEED APPLICATION, ECB INSTALLATION IN BASINS, AND MULCHING.
- UPON COMPLETION OF ALL EARTH DISTURBANCE ACTIVITIES, THE OWNER AND/OR OPERATORS SHALL CONTACT THE LOCAL CCD FOR A FINAL INSPECTION.
- MAINTAIN E&SC BMPs UNTIL SITE WORK IS COMPLETE AND UNIFORM 70% PERENNIAL VEGETATIVE COVER IS ESTABLISHED.
- REMOVE AND PROPERLY DISPOSE/RECYCLE E&SC BMPs. REMOVE ORANGE CONSTRUCTION FENCE, REPAIR AND PERMANENTLY STABILIZE AREAS DISTURBED DURING E&SC BMP REMOVAL UPON ESTABLISHMENT OF UNIFORM 70% VEGETATIVE COVER.

\* INDICATES A CRITICAL STAGE OF PCSM INSTALLATION TO BE OBSERVED BY A LICENSED PROFESSIONAL OR DESIGNED CONTRACTOR TO PROVIDE 3 WORKING DAYS NOTICE TO ENGINEER AND WILLIAMS.



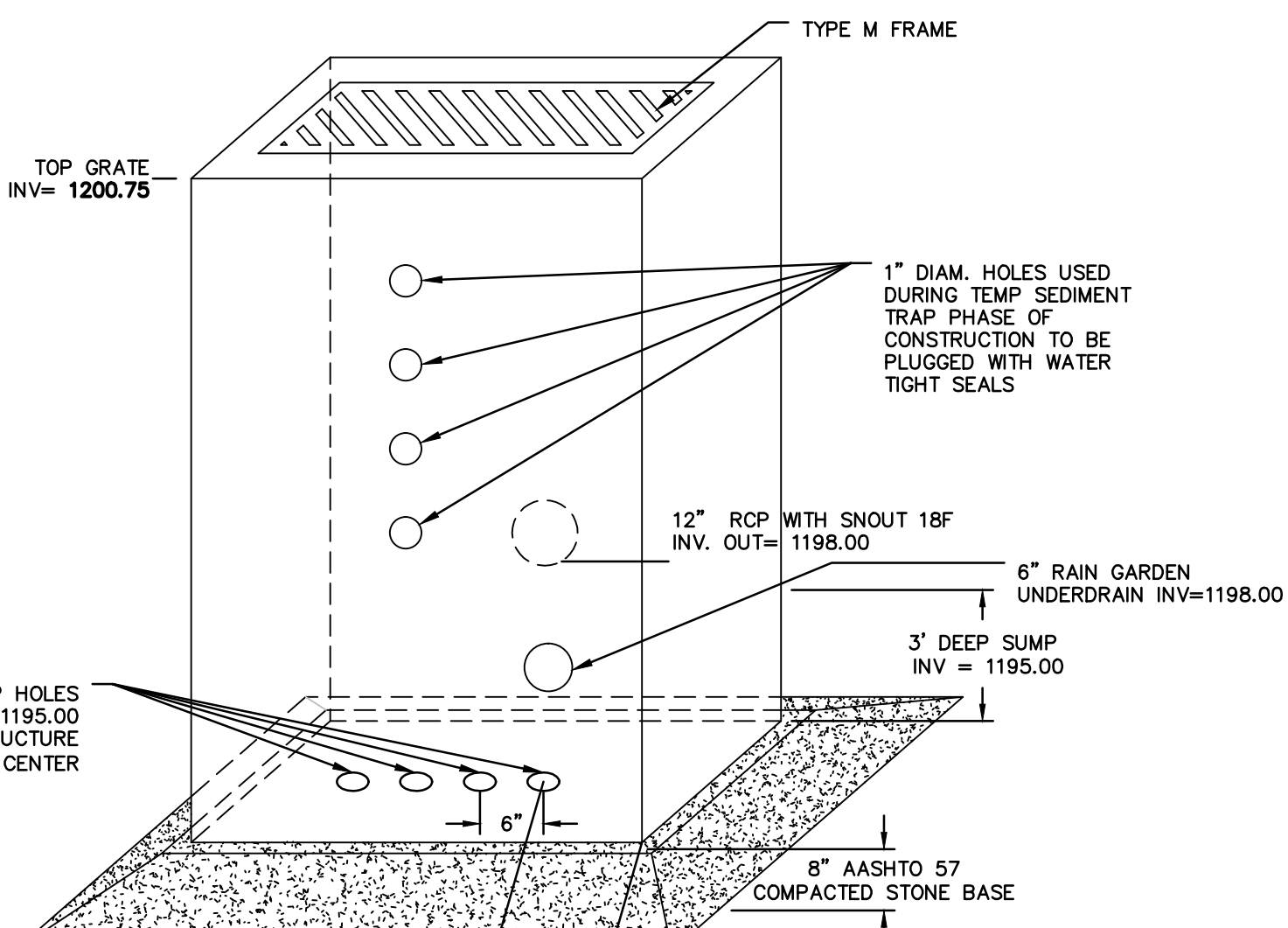
BASIN NO.	WEIR		CREST ELEV. WCE (FT)	WIDTH Ww (FT)	LINING		SWALE	DISSIPATER					
	Z3 (FT)	Z4 (FT)			PERM. TYPE	STAPLE PATTERN		Z5 (FT)	DEPTH Cd (FT)	LENGTH Dl (FT)	WIDTH Dw (FT)	RIP RAP THICK. DRI (IN)	
1	3	3	1202.00	1201.00	15	P550	B	N/A	N/A	10	15	P550	N/A
2	3	3	1134.00	1133.50	12	P550	B	N/A	N/A	10	12	P550	N/A

HEAVY EQUIPMENT SHALL NOT CROSS OVER SPILLWAY WITHOUT PRECAUTIONS TAKEN TO PROTECT TRM LINING. DISPLACED LINER WITHIN THE SPILLWAY AND/OR OUTLET SWALE SHALL BE REPLACED IMMEDIATELY. RIPRAP AT TOE OF EMBANKMENT SHALL BE EXTENDED A SUFFICIENT LENGTH IN BOTH DIRECTIONS TO PREVENT SCOUR.

THE USE OF BAFFLES THAN REQUIRE SUPPORT POSTS ARE RESTRICTED FROM USE IN BASINS REQUIRING IMPERVIOUS LINERS.

**BASIN EMERGENCY SPILLWAY WITH TRM LINING**

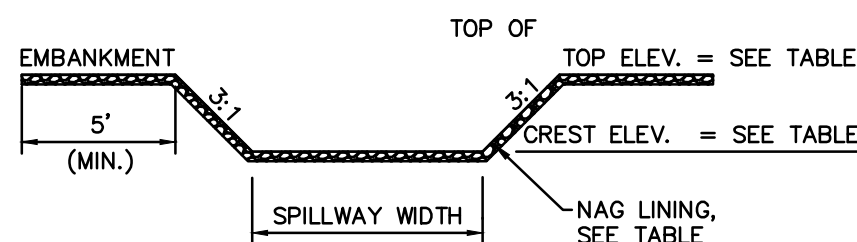
N.T.S. PADEP-7-13



**PERMANENT OUTLET STRUCTURE OS-1**

N.T.S.

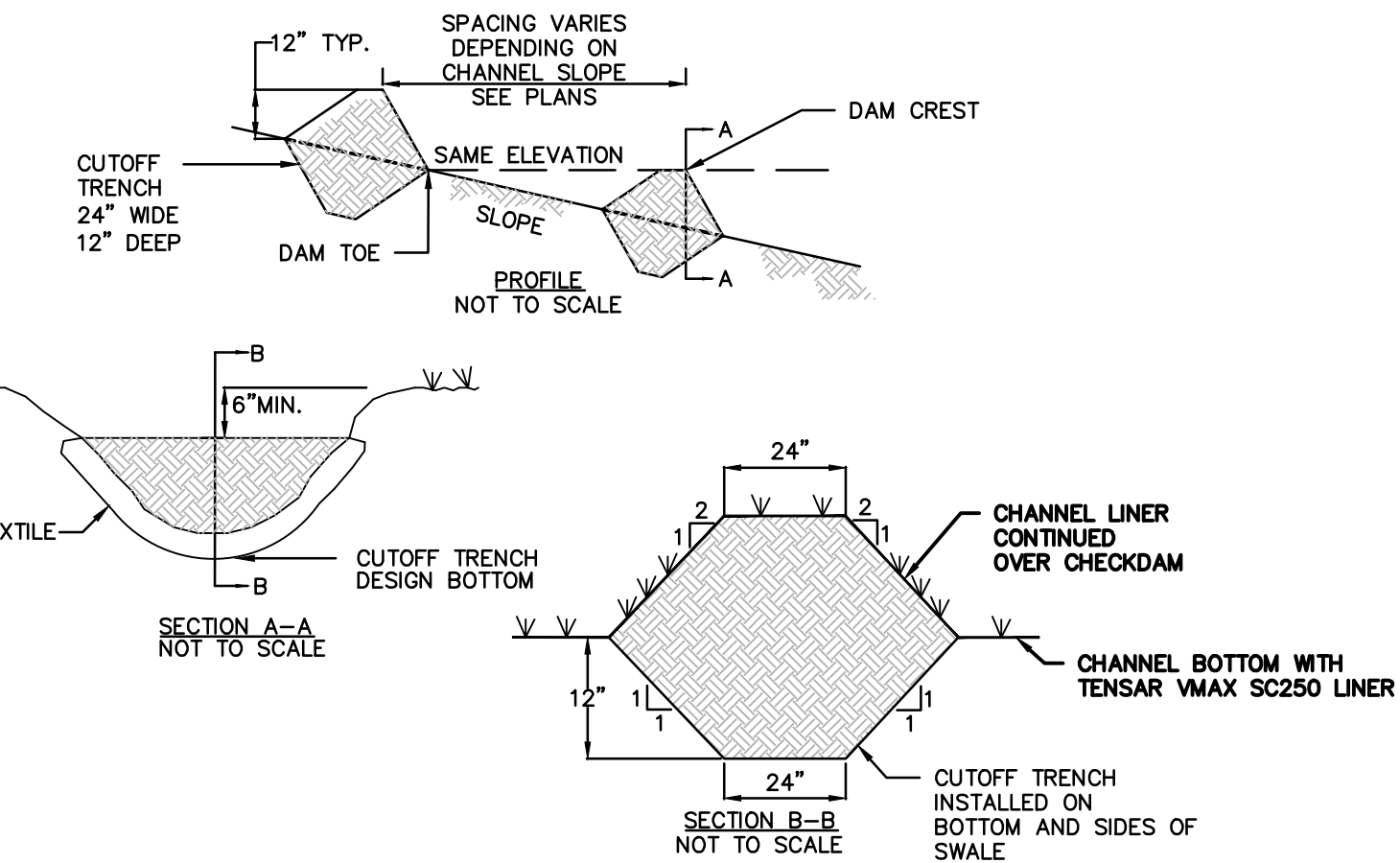
- THE PROPOSED OUTLET STRUCTURE SHALL BE A TYPE "M" INLET IN ACCORDANCE WITH PENNDOT PUBLICATION 408, SECTION 605 AND STANDARDS FOR ROADWAY CONSTRUCTION, RC-34. STRUCTURE SHALL CONTAIN A SNOOT OVER OUTFALL PIPE.



BASIN NO.	WEIR		CREST ELEV. WCE (FT)	WIDTH Ww (FT)	LINING		
	Z3 (FT)	Z4 (FT)			PERM. TYPE	THICKNESS	
1	3	3	1202.00	1201.00	30	P550	N/A
2	3	3	1134.00	1133.50	8	P550	N/A

**RAIN GARDEN SPILLWAY**

N.T.S.

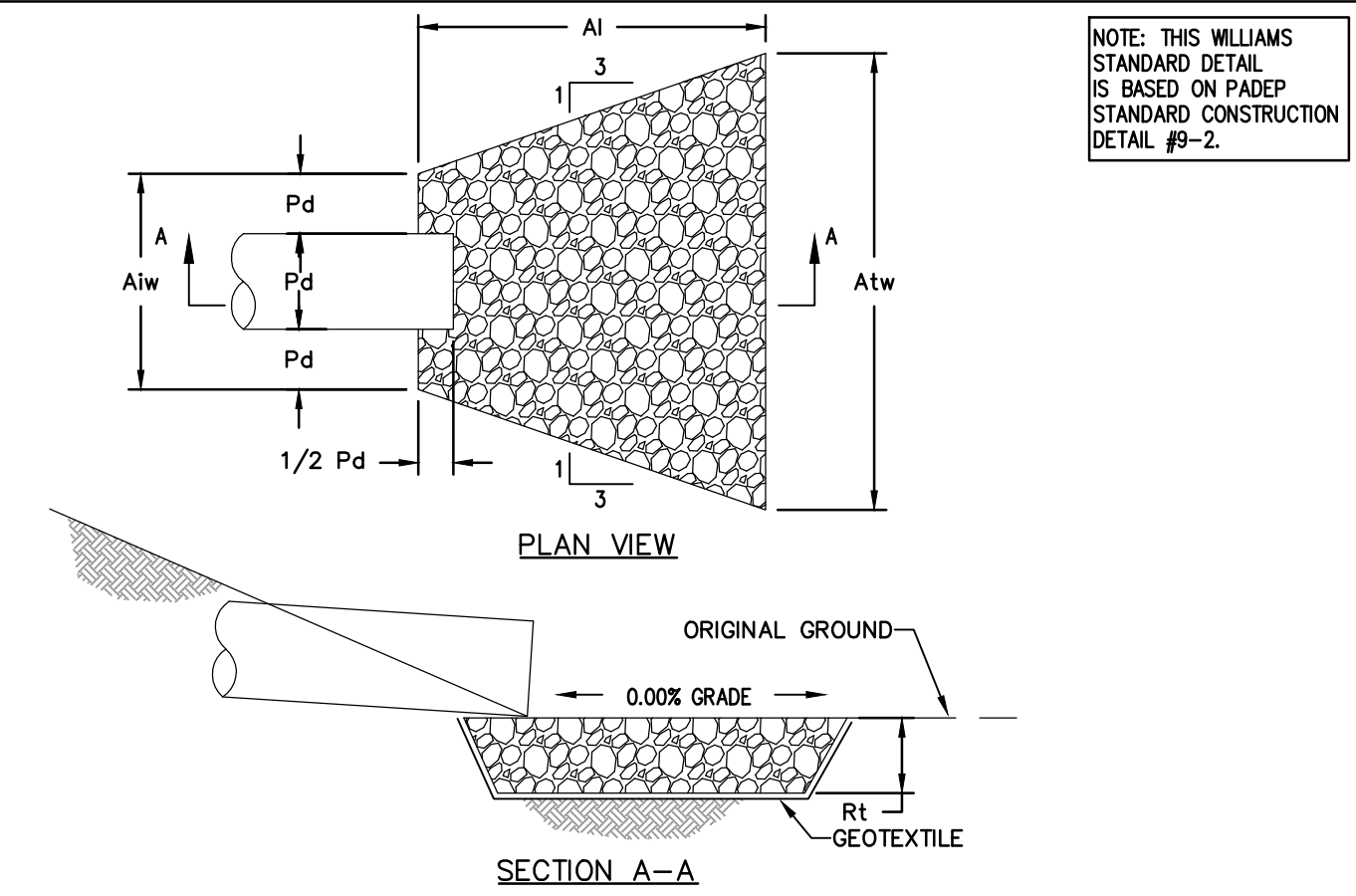


NOTES:

- CHECK DAMS ARE APPLICABLE FOR SMALL DITCHES AND SWALES AND ARE NOT TO BE USED IN LIVE FLOWING STREAMS.
- CHECK DAMS SHALL BE INSTALLED SUCH THAT COMPLETE COVERAGE OF THE ENTIRE WIDTH OF THE DITCH OR SWALE IS ACHIEVED.
- SEDIMENT SHALL BE REMOVED WHEN IT ACCUMULATES TO A DEPTH OF ONE-HALF THE ORIGINAL DAM HEIGHT.
- SET SPACING OF CHECK DAMS TO ASSUME THAT THE ELEVATIONS OF THE CREST OF THE DOWNSTREAM DAM IS AT THE SAME ELEVATION OF THE TOE OF THE UPSTREAM DAM.
- INSTALL A CUTOFF TRENCH A MINIMUM OF 12 INCHES INTO THE SWALE BOTTOM AND SIDES TO PREVENT CUTTING AROUND THE DAM.
- ENSURE THAT CHANNEL APPURTENANCES SUCH AS CULVERT ENTRANCES BELOW CHECK DAMS ARE NOT SUBJECT TO DAMAGE OR BLOCKAGE FROM DISPLACED STONE.

**EARTHEN CHECK DAM**

N.T.S.



OUTLET NO.	PIPE DIA PD (IN)	RIPRAP			APRON	
		SIZE (R-...)	THICK. Rt (IN)	LENGTH AI (FT)	INITIAL WIDTH Atw (FT)	TERMINAL WIDTH Atw (FT)
* ALL INFORMATION CAN BE FOUND ON ACCESS ROAD AND EROSION AND SEDIMENT CONTROL PLANS. REFER TO NOTES 4 AND 5 FOR DIMENSION LOCATIONS.						

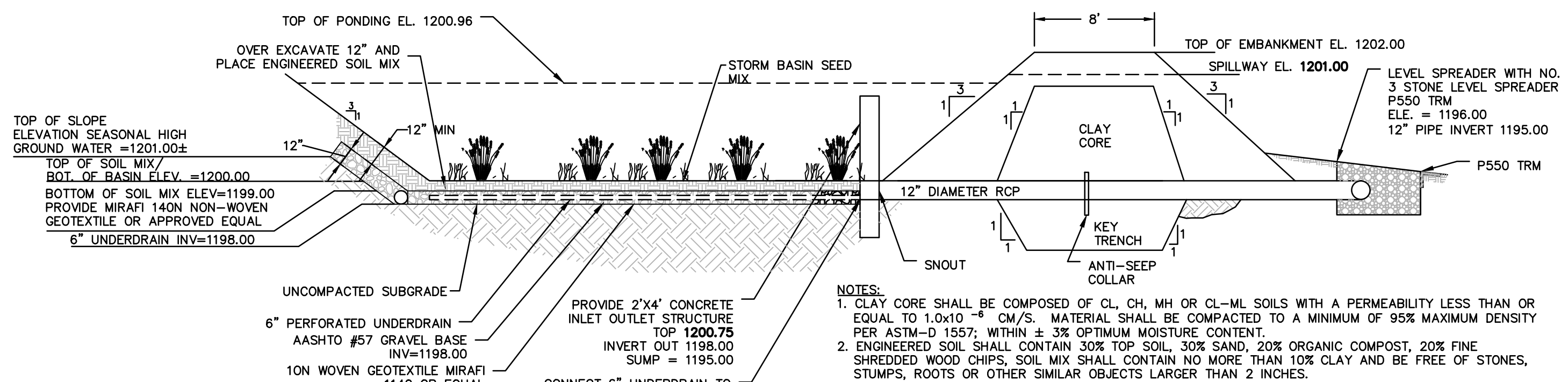
NOTES:

- ALL APRONS SHALL BE CONSTRUCTED TO THE DIMENSIONS SHOWN ON THE PLANS. TERMINAL WIDTHS SHALL BE ADJUSTED AS NECESSARY TO MATCH RECEIVING CHANNELS.
- ALL APRONS SHALL BE INSPECTED AT LEAST WEEKLY AND AFTER EACH RUNOFF EVENT. DISPLACED RIPRAP WITHIN THE APRON SHALL BE REPLACED IMMEDIATELY.
- EXTEND RIPRAP ON BACK SIDE OF APRON TO AT LEAST 1/2 DEPTH OF PIPE ON BOTH SIDES TO PREVENT SCOUR AROUND THE PIPE.
- FOR APRONS ON ACCESS ROADS, THE DIMENSIONS FOR THE APRONS ARE GIVEN AS FOLLOWS: L x d x W/W WHERE: L = LENGTH OF APRON OR "AI" AS SHOWN IN THE PLAN VIEW ABOVE. d = DEPTH OF RIP RAP OR "RT" AS SHOWN IN THE SECTION ABOVE. W/W = WIDTH OF SHORT END OF APRON/WIDTH OF LONG END OF APRON OR "Atw"/"Atw" AS SHOWN IN THE PLAN VIEW ABOVE.
- FOR APRON ON SWALES AND FLUME CROSSINGS, THE DIMENSIONS FOR THE APRONS ARE AS FOLLOWS: DIMENSIONS LOCATED ON TABLE 2: TEMPORARY CLEAN WATER DIVERSION SUMMARY:
  - RIP RAP SIZE (R-...)
  - RIP RAP THICK. (Rt)
  - RIP RAP THICKNESS (Rt)
  - APRON LENGTH (AI)

OUTLET NO.	PIPE DIA PD (IN)	RIPRAP			APRON	
		SIZE (R-...)	THICK. Rt (IN)	LENGTH AI (FT)	INITIAL WIDTH Atw (FT)	TERMINAL WIDTH Atw (FT)
VEGETATED SWALE 1	N/A	3	9	6	9	9
CULVERT 1	12	3	9	6	3	9

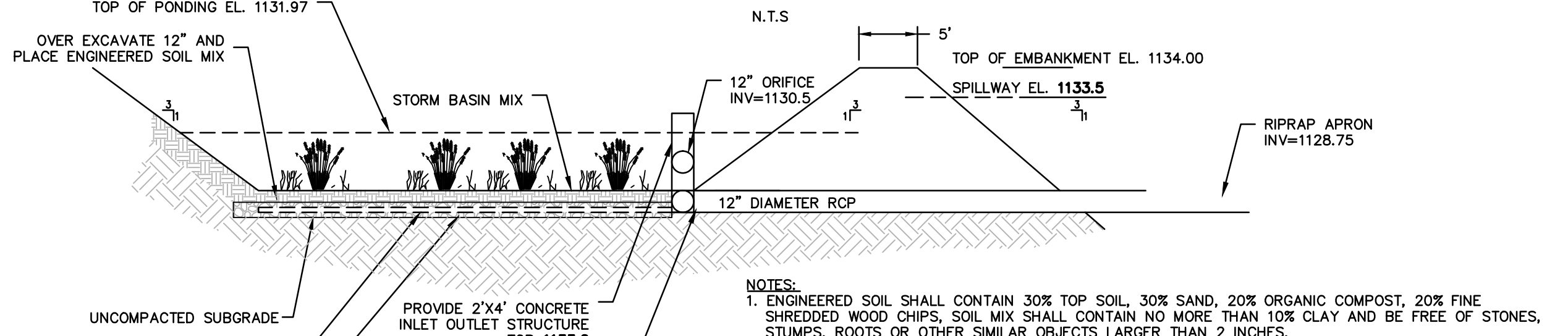
**RIP-RAP APRON AT PIPE OUTLET WITHOUT FLARED END SECTION**

N.T.S.



**RAIN GARDEN 1 CROSS SECTION**

N.T.S.



**RAIN GARDEN 2 CROSS SECTION**

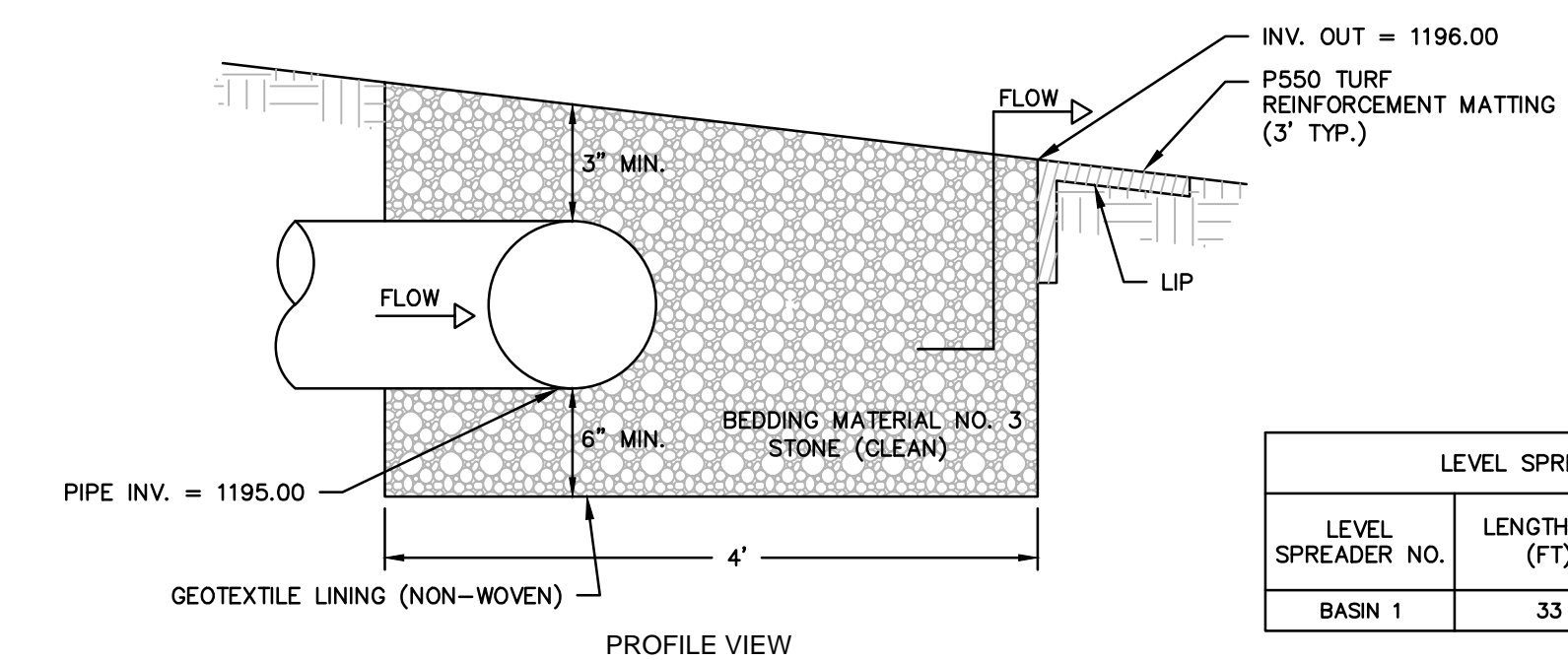
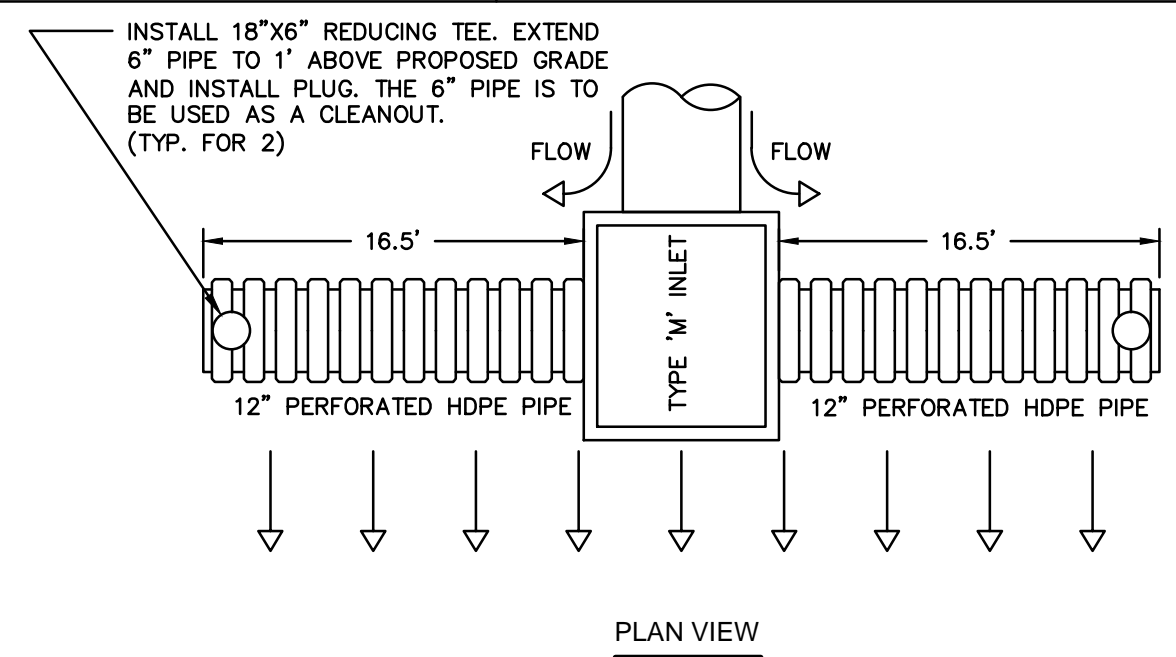
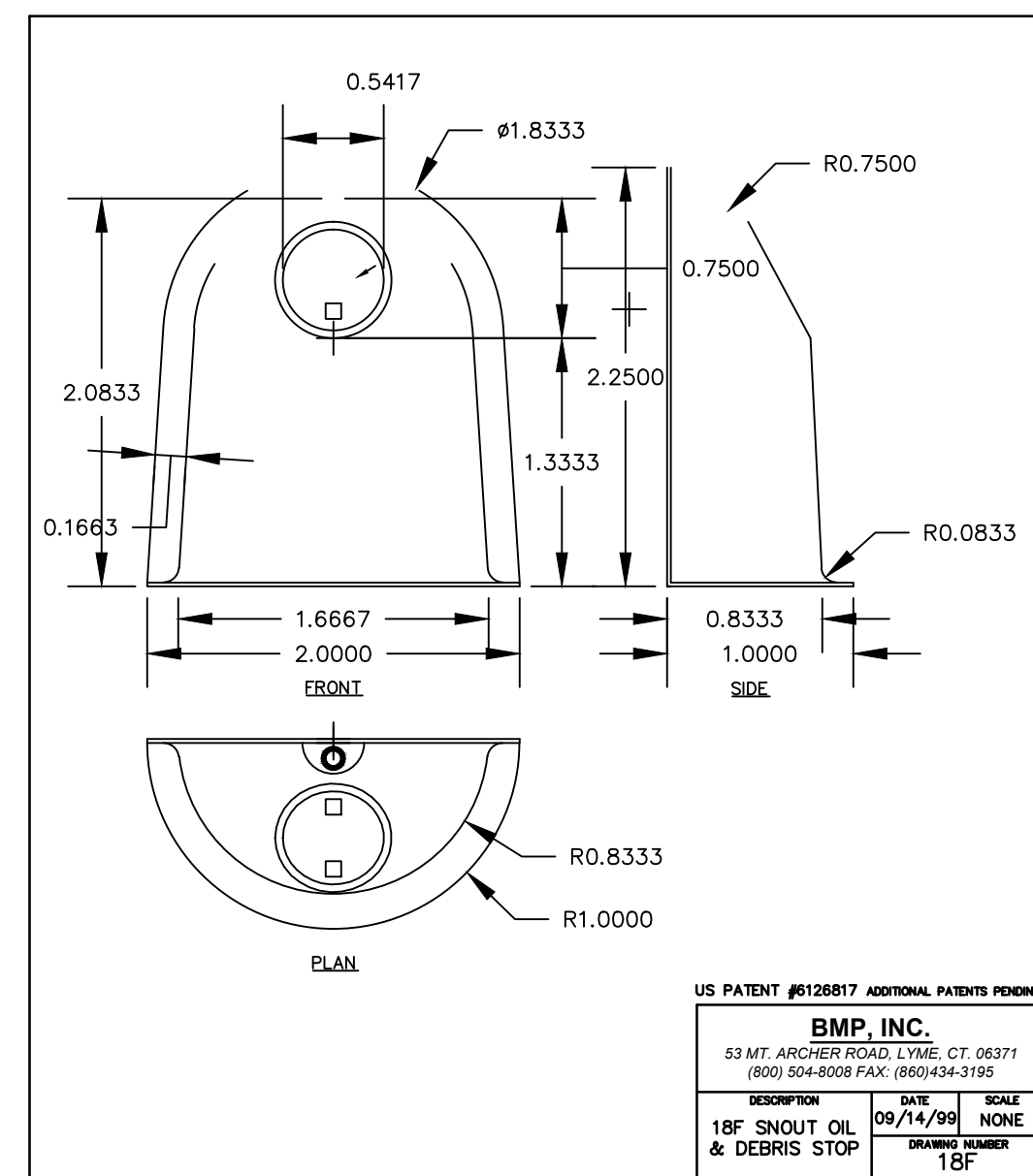
N.T.S.

ALARIC J. BUSHER REG. NO. PE 66320

REVISIONS							
NO.	DATE	BY	DESCRIPTION	W.D. NO.	CHK.	APP.	
0	08/26/2015	BL	ISSUED FOR PADEP PERMIT SUBMITTAL	W0161501	DAK	AJB	
1	12/02/2015	BL	ISSUED FOR PADEP RESUBMITTAL	W0161501	DAK	AJB	
2	02/04/2016	BL	ISSUED FOR PADEP RESUBMITTAL	W0161501	DAK	AJB	
3	03/26/2016	BL	ISSUED FOR PADEP RESUBMITTAL	W0161501	DAK	AJB	
4	OCT. 2016	BL	PADEP TECHNICAL DEFICIENCY RESPONSE #1	W0161501	DAK	AJB	
5	April 2017	BL	PADEP TECHNICAL DEFICIENCY RESPONSE #2	W0161501	DAK	AJB	
6	August 2017	BL	PADEP TECHNICAL DEFICIENCY RESPONSE #3	W0161501	DAK	AJB	

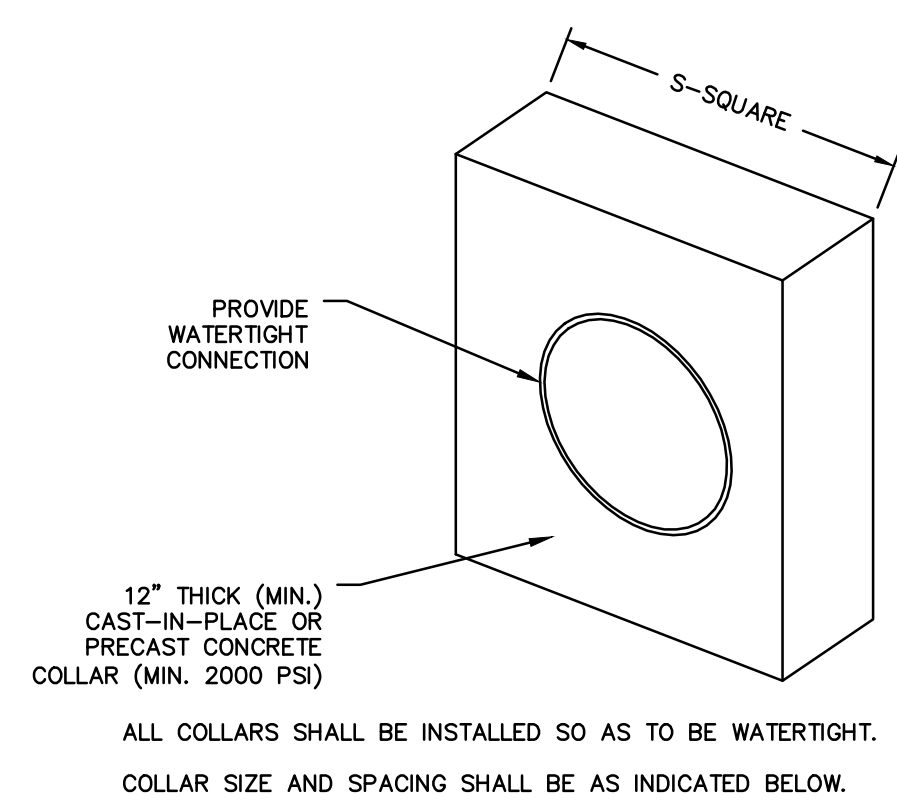
TRANSCONTINENTAL GAS PIPE LINE COMPANY, LLC				
ATLANTIC SUNRISE PROJECT- PROPOSED 30"/42" NATURAL GAS PIPELINE				
POST CONSTRUCTION STORMWATER MANAGEMENT PLANS FOR WEST DIAMOND REGULATOR STATION & ASSOCIATED PERMANENT ACCESS ROADS JACKSON/SUGARLOAF TOWNSHIPS, COLUMBIA COUNTY, PENNSYLVANIA				
PCSM NOTES AND DETAILS				
DRAWN BY:	JEC	DATE:	04/03/15	ISSUED FOR BID:
CHECKED BY:	AJB	DATE:	04/03/15	ISSUED FOR CONSTRUCTION:
APPROVED BY:	AJB	DATE:	07/17/15	DRAWING NUMBER:
APP. NO.:	1161501	SCALE:	(36-7943)MF-1A-9	REVISION:
				6

SHEET 7 OF 8



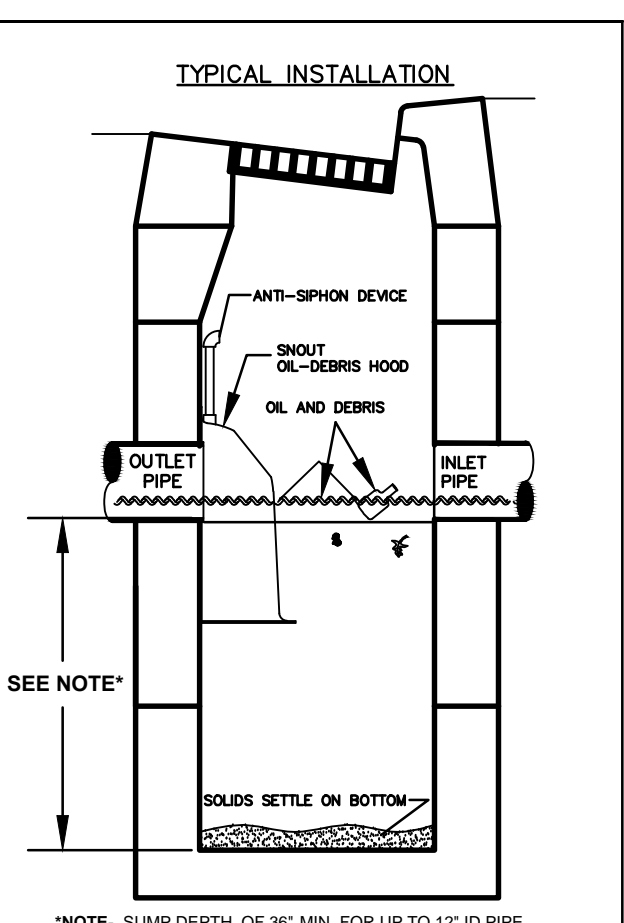
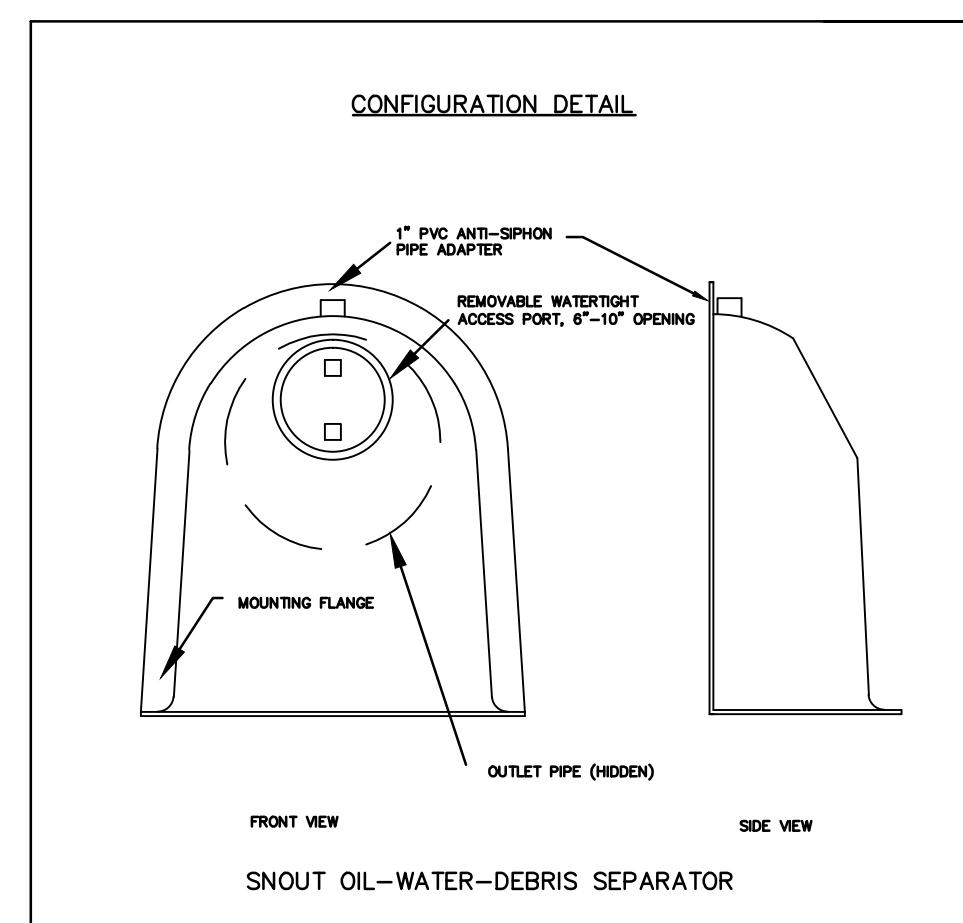
LEVEL SPREADER SUMMARY TABLE			
LEVEL SPREADER NO.	LENGTH (L) (FT)	PIPE INVERT	SPREADER INVERT OUT
BASIN 1	33	1195.00	1196.00

**LEVEL SPREADER WITH SUBSURFACE DISCHARGE**  
 N.T.S

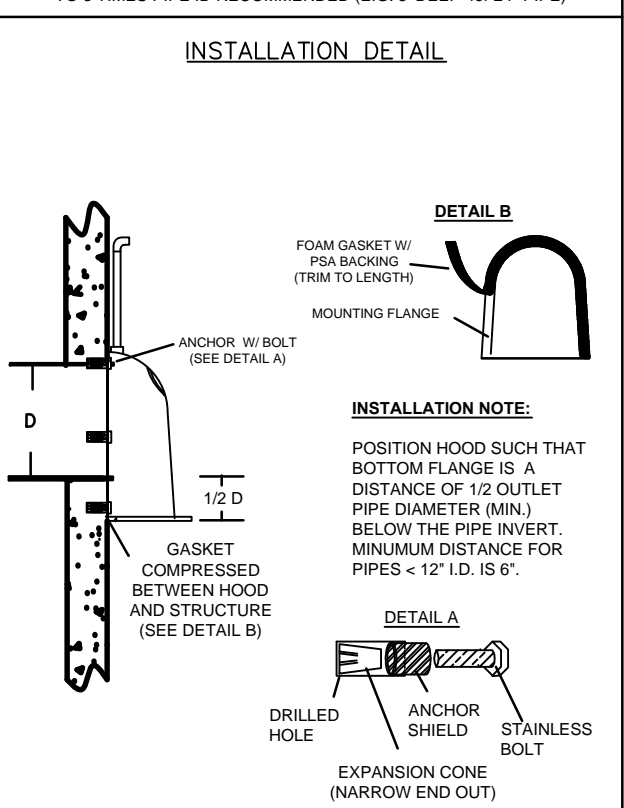


BASIN OR TRAP NO.	PIPE SIZE (IN)	BARRELL DIA. PIPE O.D. (IN)	S (IN)	NO. OF COLLARS	DISTANCE RISER TO 1ST COLLAR (FT)	COLLAR SPACING (FT)
BASIN 1	12	16	60	1	11	N/A

**CONCRETE ANTI-SEEP COLLAR FOR PERMANENT BASINS OR TRAPS DETAIL**  
 N.T.S PAEP-7-16

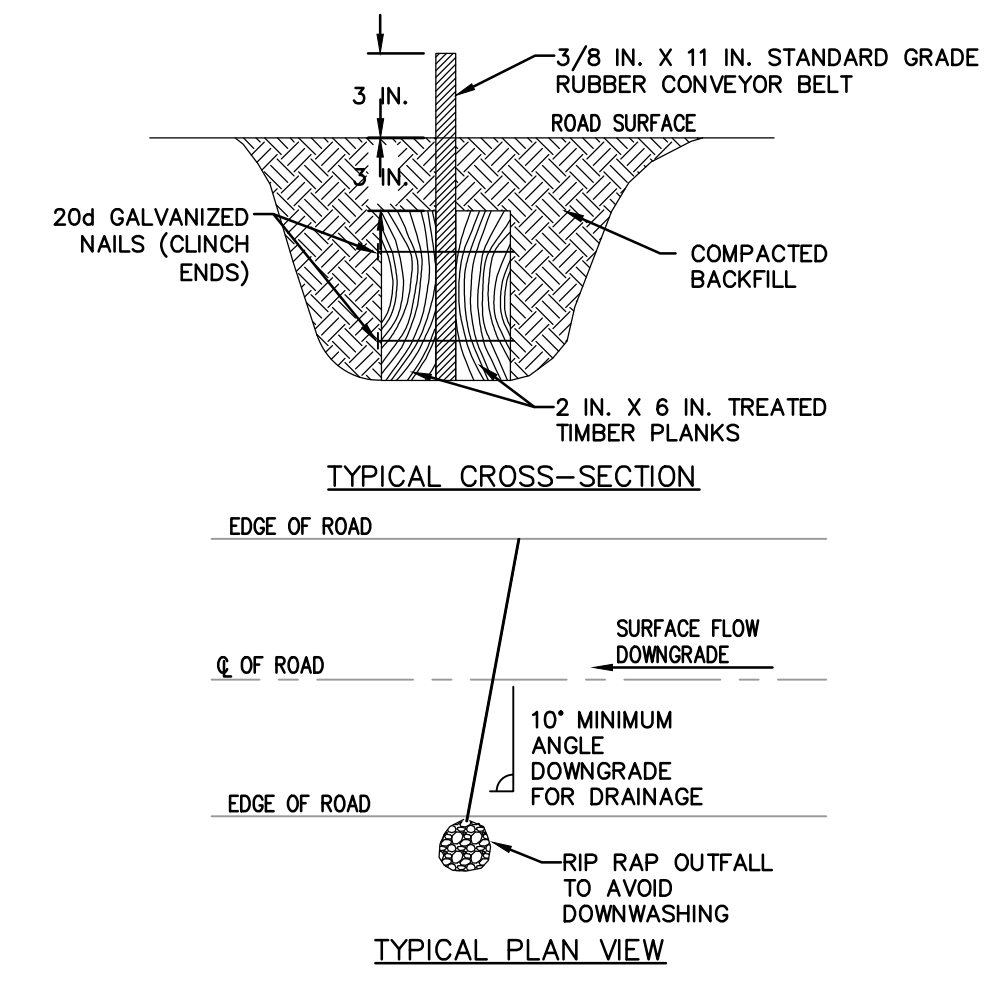


- NOTES:**
- ALL HOODS AND TRAPS FOR CATCH BASINS AND WATER QUALITY STRUCTURES SHALL BE MANUFACTURED BY: BEST MANAGEMENT PRODUCTS, INC. 53 MT. ARCHER RD. LYME, CT 06371 (860) 434-0277, (860) 434-3195 FAX TOLL FREE: (800) 504-8008 OR (888) 434-0277 WEB SITE: www.bmpinc.com OR PRE-APPROVED EQUAL
  - ALL HOODS SHALL BE CONSTRUCTED OF A GLASS REINFORCED RESIN COMPOSITE WITH ISO GEL COAT EXTERIOR FINISH WITH A MINIMUM 0.125" LAMINATE THICKNESS.
  - ALL HOODS SHALL BE EQUIPPED WITH A WATERTIGHT ACCESS PORT, A MOUNTING FLANGE, AND AN ANTI-SIPHON VENT PIPE AND ELBOW AS DRAWN. (SEE CONFIGURATION DETAIL)
  - THE SIZE AND POSITION OF THE HOOD SHALL BE DETERMINED BY OUTLET PIPE SIZE AS PER MANUFACTURER'S RECOMMENDATION (SNOUT SIZE ALWAYS LARGER THAN PIPE SIZE).
  - THE BOTTOM OF THE HOOD SHALL EXTEND DOWNWARD A MINIMUM DISTANCE EQUAL TO 1/2 THE OUTLET PIPE DIAMETER WITH A MINIMUM DISTANCE OF 6" FOR PIPES <12" I.D.
  - THE ANTI-SIPHON VENT SHALL EXTEND ABOVE HOOD BY MINIMUM OF 3" AND A MAXIMUM OF 12" ACCORDING TO STRUCTURE CONFIGURATION.
  - THE SURFACE OF THE STRUCTURE WHERE THE HOOD IS MOUNTED SHALL BE FINISHED SMOOTH AND FREE OF LOOSE MATERIAL AND PIPE SHALL BE FINISHED FLUSH TO WALL.
  - ALL STRUCTURE JOINTS SHALL BE WATERTIGHT.
  - THE HOOD SHALL BE SECURELY ATTACHED TO STRUCTURE WALL WITH 3/8" STAINLESS STEEL BOLTS AND OIL-RESISTANT GASKET AS SUPPLIED BY MANUFACTURER. (SEE INSTALLATION DETAIL)
  - INSTALLATION INSTRUCTIONS SHALL BE FURNISHED WITH MANUFACTURER SUPPLIED INSTALLATION KIT. INSTALLATION KIT SHALL INCLUDE:  
 A. INSTALLATION INSTRUCTIONS  
 B. PVC ANTI-SIPHON VENT PIPE AND ADAPTER  
 C. OIL-RESISTANT CRUSHED CELL FOAM GASKET WITH PSA BACKING  
 D. 3/8" STAINLESS STEEL BOLTS  
 E. ANCHOR SHIELDS



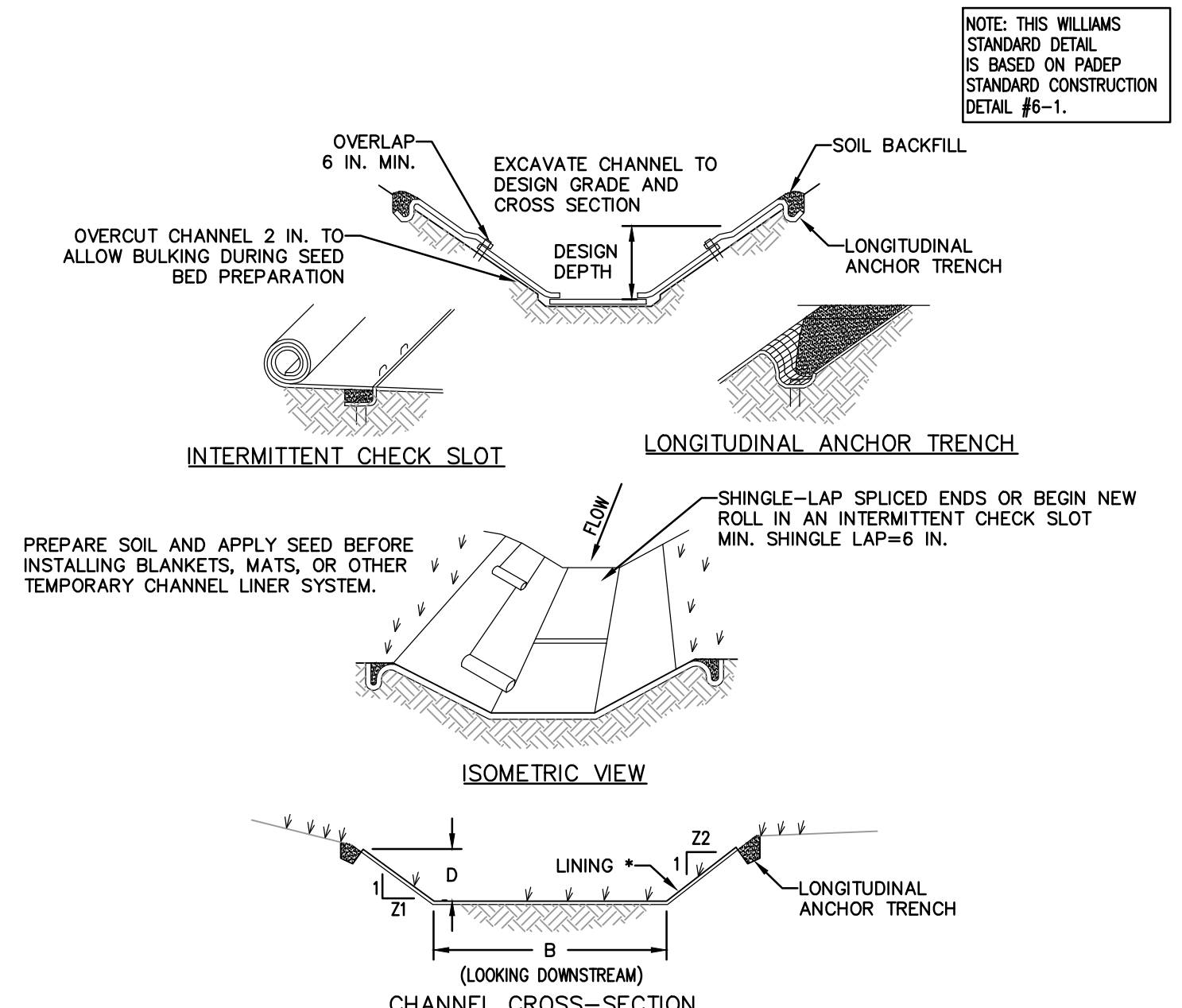
**HOOD SPECIFICATION FOR CATCH BASINS AND WATER QUALITY STRUCTURES**

DESCRIPTION	DATE	SCALE
OIL-DEBRIS HOOD SPECIFICATION AND INSTALLATION (TYPICAL)	09/08/15	NONE
	DRAWING NUMBER	SP-SN



- NOTES:**
- DEFLECTORS SHALL BE USED ON TEMPORARY ACCESS ROADS WITH SLOPES GREATER THAN 10 PERCENT. MAXIMUM DEFLECTOR SPACING SHALL BE 100 FEET.
  - DEFLECTOR SHALL BE INSPECTED WEEKLY AND AFTER EACH RUNOFF EVENT.
  - ACCUMULATED SEDIMENT SHALL BE REMOVED FROM DEFLECTOR WITHIN 24 HOURS OF INSPECTION.
  - BELT SHALL BE REPLACED WHEN WORN AND NO LONGER EFFECTIVE.

**WATER DEFLECTOR DETAIL**  
 N.T.S



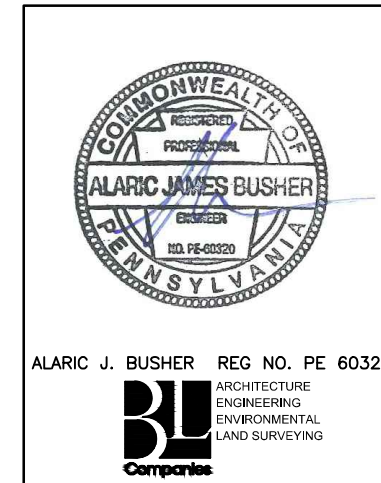
- NOTES:**
- ANCHOR TRENCHES SHALL BE INSTALLED AT BEGINNING AND END OF SWALE IN THE SAME MANNER AS LONGITUDINAL ANCHOR TRENCHES.
- SWALE DIMENSIONS SHALL BE CONSTANTLY MAINTAINED. SWALE SHALL BE CLEANED WHENEVER TOTAL SWALE DEPTH IS REDUCED BY 25% AT ANY LOCATION. SEDIMENT DEPOSITS SHALL BE REMOVED WITHIN 24 HOURS OF DISCOVERY OR AS SOON AS SOIL CONDITIONS PERMIT ACCESS TO SWALE WITHOUT FURTHER DAMAGE. DAMAGED LINING SHALL BE REPAIRED OR REPLACED WITHIN 48 HOURS OF DISCOVERY.
- NO MORE THAN ONE THIRD OF THE SHOOT (GRASS LEAF) SHALL BE REMOVED IN ANY MOWING. GRASS HEIGHT SHALL BE MAINTAINED BETWEEN 2 AND 3 INCHES UNLESS OTHERWISE SPECIFIED. EXCESS VEGETATION SHALL BE REMOVED FROM PERMANENT SWALES TO ENSURE SUFFICIENT SWALE CAPACITY.

**SWALE SUMMARY TABLE**

SWALE NO.	BOTTOM WIDTH B (FT)	DEPTH D (FT)	TOP WIDTH W (FT)	Z1 (FT)	Z2 (FT)	TEMPORARY LINING*	PERMANENT LINING
VEGETATED SWALE 1	2.0	2.0	14.0	3.0	3.0	SC250	GRASS/SC250

**VEGETATED SWALE**  
 N.T.S

Drawn By & Date/Time: shampton Jul 27, 2017 10:30am  
 Drawing Location & Name: G:\JOBS\14\14C\14C4909\DWG\010-CPLN\FRS\_PCSM14C4909(10)-WDIAMOND.dwg



REVISIONS						
NO.	DATE	BY	DESCRIPTION	W.D. NO.	CHK.	APP.
0	08/26/2015	BL	ISSUED FOR PAEP PERMIT SUBMITTAL	W0161501	DAK	AJB
1	12/02/2015	BL	ISSUED FOR PAEP RESUBMITTAL	W0161501	DAK	AJB
2	02/04/2016	BL	ISSUED FOR PAEP RESUBMITTAL	W0161501	AJB	AJB
3	03/26/2016	BL	ISSUED FOR PAEP RESUBMITTAL	W0161501	AJB	AJB
4	OCT. 2016	BL	PAEP TECHNICAL DEFICIENCY RESPONSE #1	W0161501	AJB	AJB
5	April 2017	BL	PAEP TECHNICAL DEFICIENCY RESPONSE #2	W0161501	AJB	AJB
6	August 2017	BL	PAEP TECHNICAL DEFICIENCY RESPONSE #3	W0161501	AJB	AJB

TRANSCONTINENTAL GAS PIPE LINE COMPANY, LLC  
 ATLANTIC SUNRISE PROJECT- PROPOSED 30"/42" NATURAL GAS PIPELINE  
 POST CONSTRUCTION STORMWATER MANAGEMENT PLANS FOR WEST DIAMOND REGULATOR STATION & ASSOCIATED PERMANENT ACCESS ROADS JACKSON/SUGARLOAF TOWNSHIPS, COLUMBIA COUNTY, PENNSYLVANIA

**PCSM NOTES AND DETAILS**

DRAWN BY: JEC DATE: 04/03/15 ISSUED FOR BID: SCALE: AS NOTED  
 CHECKED BY: AJB DATE: 04/03/15 ISSUED FOR CONSTRUCTION: REVISION: 6  
 APPROVED BY: AJB DATE: 07/17/15 DRAWING NUMBER: (36-7943)MF-1A-9 SHEET 8 OF 8  
 W.D. NUMBER: 1161501