

Atlantic Sunrise Project Appalachian Trail Crossing Plan

August 2016

Introduction and Background

Transcontinental Gas Pipe Line Company, LLC (Transco) proposes to construct the Atlantic Sunrise Project (Project), which is an expansion of the existing Transco natural gas transmission system that will enable Transco to provide natural gas from northern Pennsylvania to its existing market areas in the southeastern United States. The Project includes installation of 199.4 miles of new pipeline, including two new greenfield pipelines (Central Penn Line [CPL] North and CPL South), two pipeline loops (Chapman and Unity), and noncontiguous pipeline replacements.

The Appalachian Trail is an approximate 2,190-mile-long public foot trail that extends from Georgia to Maine and crosses scenic, wooded, pastoral, and culturally significant lands in the Appalachian Mountains. The Appalachian Trail is managed by a federal, state and local partnership. The Appalachian Trail was started by Benton MacKaye in 1922 as a local or regional trail. In 1925, the Appalachian Trail Conference, now known as the Appalachian Trail Conservancy, was formed in Washington, D.C. The National Trails System Act of 1968 authorized the Appalachian Trail as a unit of the National Park System, and the National Park Service (NPS) the lead federal agency for management of the Appalachian Trail. Currently the Appalachian Trail Conservancy coordinates with 31 separate local trail clubs, the NPS, U.S. Forest Service, and numerous state and local groups, to mark and maintain the Appalachian Trail (NPS 2016). The Appalachian Trail is open year-round; however, sections may temporarily close due to weather or other reasons. The best time of the year to hike the Appalachian Trail within Pennsylvania is from mid-April through mid-June and from September through October (ATC 2015).

The Appalachian Trail extends from west to east across the length of Lebanon County, Pennsylvania, such that the route of CPL South is unable to avoid crossing this feature. The proposed route for CPL South crosses the Appalachian Trail at Mile Post 59.9 in Lebanon County, Pennsylvania, on land owned by the Commonwealth and managed by the Pennsylvania Game Commission (PGC) within State Game Land (SGL) 211.

Transco proposes to cross the trail using a 235-foot-long conventional bore. This crossing plan was prepared in coordination with the PGC and outlines the special procedures proposed to minimize disturbance to the Appalachian Trail and its users, as well as proposed mitigation. Transco is in the process of executing a license agreement with PGC to cross SGL 211 and the Appalachian Trail.

Construction

Transco proposes to cross the trail using a conventional bore construction method with a buffer of 100-feet on either side of the trail. Because the trail will be crossed using a conventional bore, and there will be no direct impacts to the trail, there will be no trail closures or reroutes associated with construction across the trail. The Appalachian Trail will remain open throughout the period of construction. The trail crossing is depicted on the figure included as Attachment A.

Overall Project construction across the Appalachian Trail and in the immediate vicinity is expected to last approximately three weeks, which includes mobilization, temporary workspace clearing (outside the buffer), conventional boring activities, pipeline installation, backfilling, and site restoration. Weekly construction reports filed with the Federal Energy Regulatory Commission (FERC) indicating changes to construction schedules will be available online through the FERC website (www.ferc.gov), under the Project Docket No. CP15-138.

Notifications and Safety Measures

Once construction timing is decided, and at least two months prior to construction, Transco will notify the PGC of the construction schedule. Two weeks prior to construction, Transco will post signage along both sides of the Appalachian Trail, parallel to the construction site, to alert Appalachian Trail users of the upcoming construction work. At the bore site, Transco will install safety fencing around the construction workspace to keep trail users out of the work area during construction. A spotter will be stationed at the trail crossing to direct hikers across the ROW in a safe and continuous manner. The mainline construction crew will work up to the bore sites on each side of the trail crossing. Transco is not proposing to cross the Appalachian Trail with any construction equipment to minimize impacts to trail users.

Restoration

Following construction, Transco will restore the disturbed areas within SGL 211, in accordance with applicable licenses and permits obtained from the PGC. The Appalachian Trail will be crossed using a conventional bore, and will not be directly impacted. These areas will

include the bore entry pits. A 100-foot forested buffer on either side of the trail will remain undisturbed.

Compensation

On July 19, 2016, the PGC's Board of Game Commissioners unanimously approved Transco's proposed mitigation, and is in the process of executing a license agreement for right-of-way on SGL 211. Transco will convey 177 acres of adjacent land to SGL 168, in Eldred Township, Monroe County, and 120 acres of adjacent land to SGL 300, in Jefferson Township, Lackawanna County, to the PGC. Transco will also compensate the PGC for standard habitat, surface and timber damages, and a standard annual license fee for the lifetime of the license.

Contact information

Pennsylvania Game Commission:

Nathan Havens

PA Game Commission, Bureau of Wildlife Habitat Management

Real Estate Division

2001 Elmerton Avenue

Harrisburg, PA 17110

717-787-4250, x3619

nhavens@pa.gov

Transco:

Aaron Blair, Senior Land Representative

99 Farber Road

Princeton, NJ 08540

(609) 285-2409

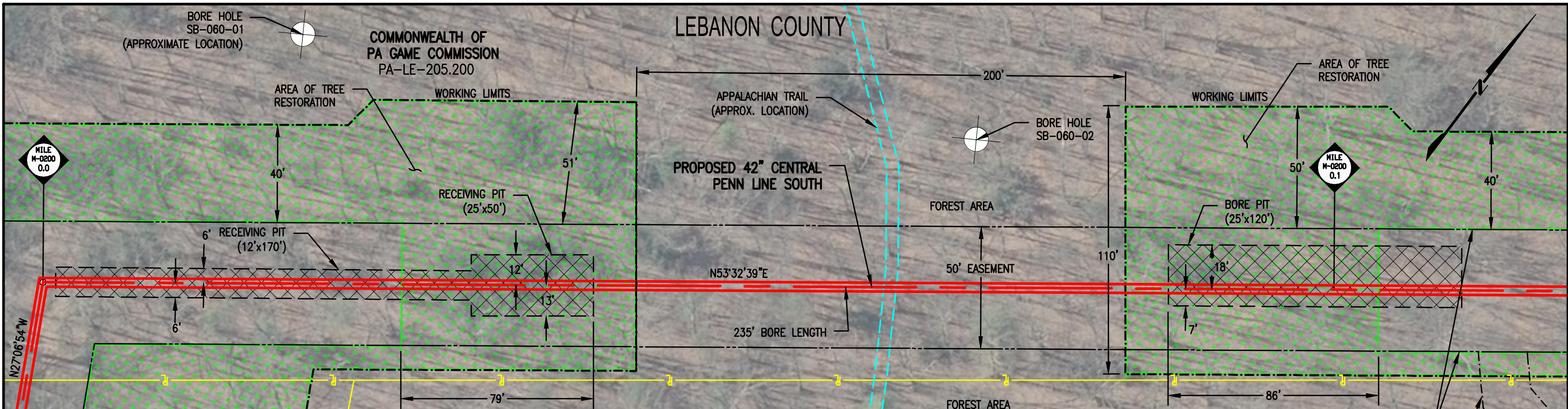
Aaron.Blair@williams.com

References

Appalachian Trail Conservancy (ATC). 2015. Terrain By State: Pennsylvania. Available at: <http://www.appalachiantrail.org/about-the-trail/terrain-by-state/pennsylvania>. Accessed on January 26, 2015.

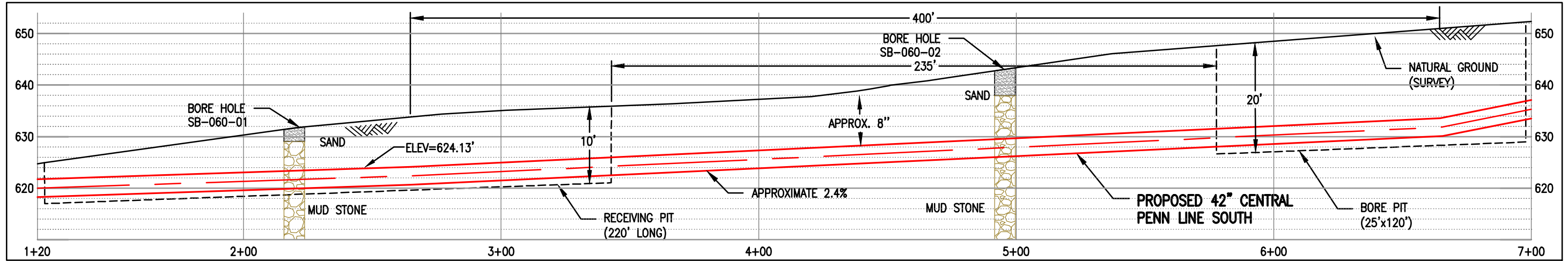
National Park Service (NPS). 2016. Appalachian National Scenic Trail. Available at: <https://www.nps.gov/appa/index.htm>. Accessed on August 17, 2016.

This page intentionally left blank.



PLAN
1" = 40'

4+46 ϕ APPALACHIAN TRAIL
(ELEV=637.09')
APPROXIMATE CPLS
M.P. 59.92



PROFILE

HORIZ.: 1" = 40'
VERT.: 1" = 20'

DATE OF PHOTOGRAPHY APRIL 2014

- LEGEND**
- PROPOSED 42" CENTRAL PENN LINE SOUTH
 - EXISTING PIPELINES
 - EXISTING TRANSCO PIPELINE R/W
 - LIMITS OF DISTURBANCE
 - PROPOSED EASEMENT
 - PROPERTY LINE
 - FOREIGN PIPELINE
 - AREA OF TREE RESTORATION



FOR
INFORMATION ONLY
07-15-2015

DRAWING NO.	REFERENCE TITLE

TRANSCONTINENTAL GAS PIPE LINE COMPANY LLC
APPALACHIAN TRAIL - 235' BORE
ATLANTIC SUNRISE PROJECT
PROPOSED 42" CENTRAL PENN LINE SOUTH
M-0200 M.P. 0.0
UNION TOWNSHIPS, PENNSYLVANIA



NO.	DATE	BY	REVISION DESCRIPTION	W.O. NO.	CHK.	APP.	DRAWN BY:	DATE:	ISSUED FOR BID:	SCALE:
A	04/13/15	BT	FOR INFORMATION ONLY	1161503	LS	MJH	BQT	02/03/15	ISSUED FOR CONSTRUCTION:	1" = 40'
B	05/19/15	MF	FOR INFORMATION ONLY	1161503	LS	MJH	LS	02/03/15		REVISION: C
C	07/02/15	DP	FOR INFORMATION ONLY	1161503	LS	MJH	MJH	04/24/15		
D	07/15/15	BT	FOR INFORMATION ONLY	1161503	LS	MJH	MJH			

DRAWING NUMBER: 24-1600-70-27-A/59.92-01 SHEET 1 OF 1

This page intentionally left blank.