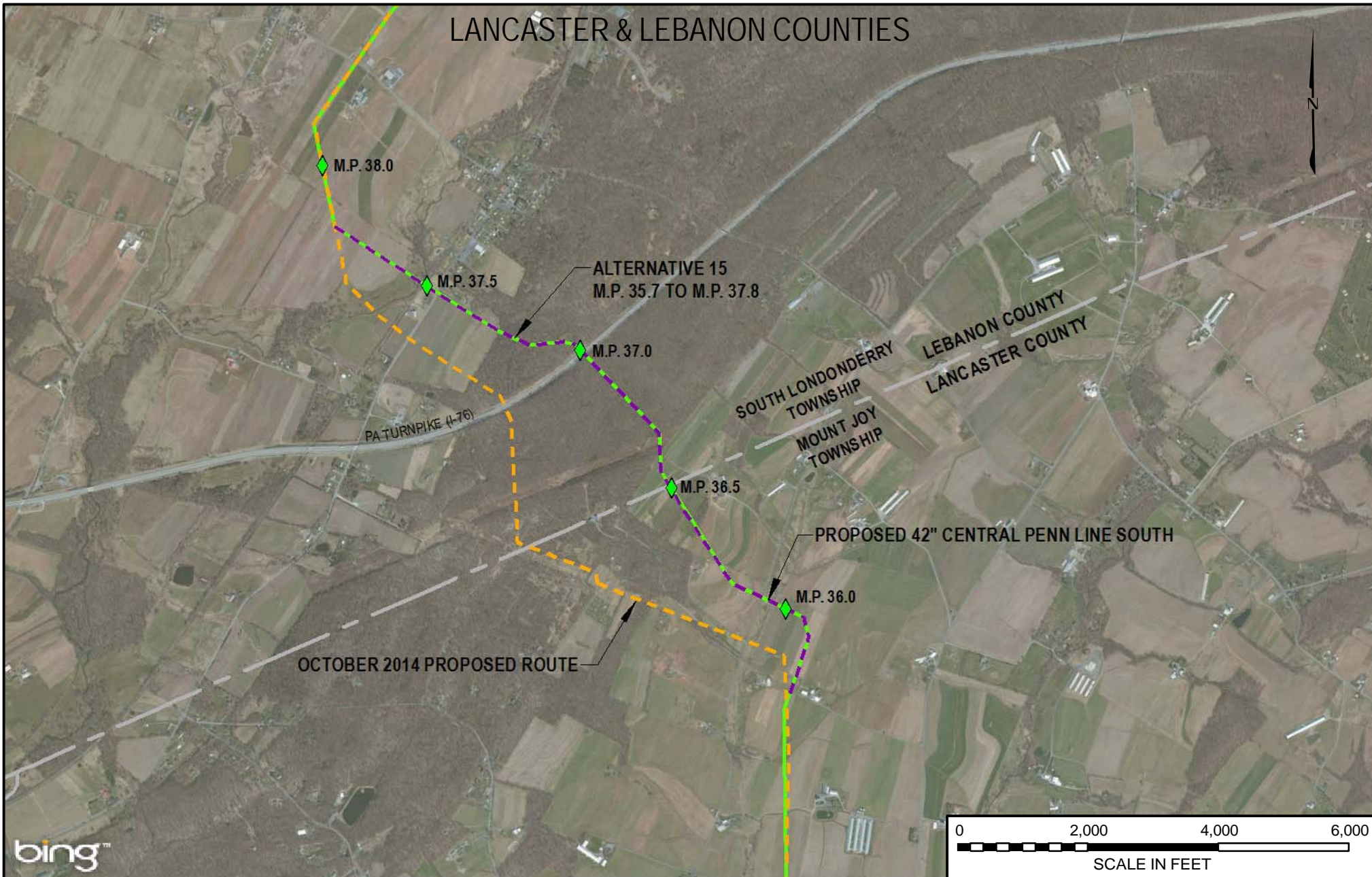


# LANCASTER & LEBANON COUNTIES



LEGEND	
	PROPOSED 42" CENTRAL PENN LINE SOUTH
	CPL SOUTH ALTERNATIVE 15
	OCTOBER 2014 PROPOSED ROUTE
	TOWNSHIP/COUNTY BOUNDARY



DRAWING NO.	REFERENCE TITLE
	<b>FIGURE 10D-19</b>

TRANSCONTINENTAL GAS PIPE LINE COMPANY LLC  
 CPL SOUTH ALTERNATIVE 15  
 ATLANTIC SUNRISE PROJECT  
 PROPOSED 42" CENTRAL PENN LINE SOUTH  
 M.P. 35.70 TO M.P. 37.82  
 LANCASTER & LEBANON COUNTIES, PENNSYLVANIA



NO.	DATE	BY	REVISION DESCRIPTION	W.O. NO.	CHK.	APP.	DRAWN BY:	DATE:	ISSUE FOR BID:	SCALE:
0	3/31/15	JTN	ISSUED FOR FERC FILING	1161503	DP	MJH	JTN	3/10/15	ISSUE FOR CONSTRUCTION:	1" = 2000'
							DP	3/10/15	ISSUE FOR CONSTRUCTION:	REVISION: 0
							MJH	3/10/15	DRAWING NUMBER:	
							1161503		<b>F-AP-CPLS-A-74</b>	
									3:09 PM 3/20/2015	