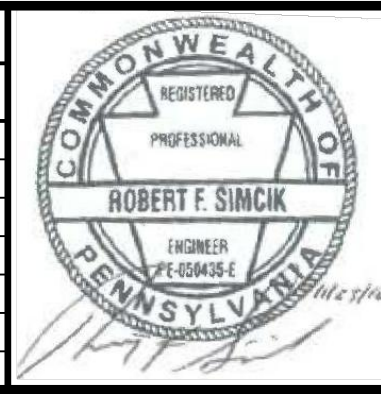


- NOTES:**
- SEE ES-0.01 & ES-0.02 FOR GENERAL NOTES & LEGEND.
 - SEE ES-0.03 FOR STREAM & WETLAND CROSSING TABLES.
 - BMP INSTALLATION TO BE ADJUSTED AS NEEDED TO ACCOMMODATE ACTUAL CONTOURS IDENTIFIED IN FIELD DURING VARIOUS PHASES OF THE PROJECT.

TETRA TECH
www.tetrattech.com
661 ANDERSEN DRIVE - FOSTER PLAZA 7
PITTSBURGH, PA 15220
T: (412) 921-7090 | F: (412) 921-4040

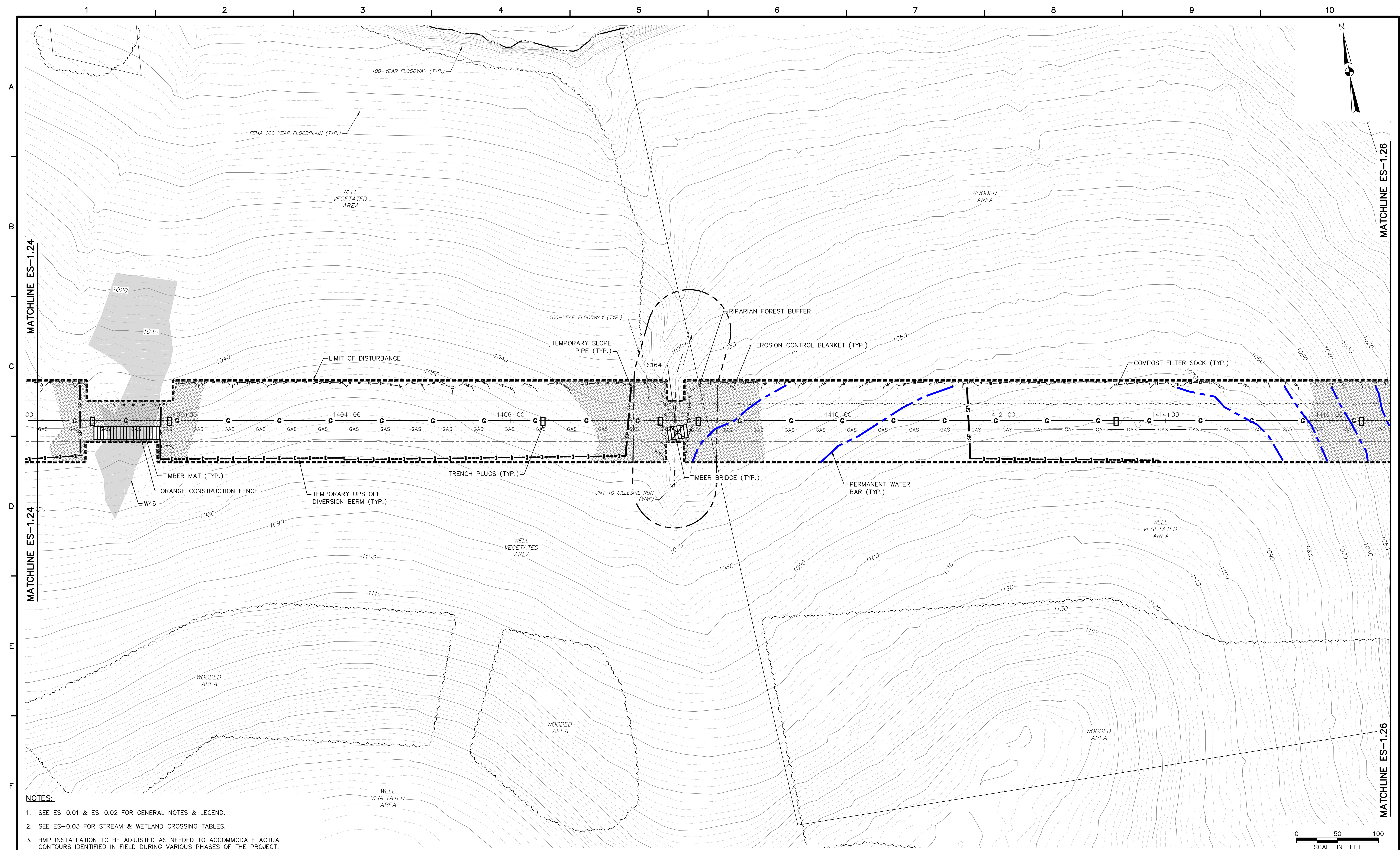
REVISIONS			
NO.	BY	DATE	REMARKS



SUNOCO PIPELINE L.P.
SINKING SPRING, PENNSYLVANIA
PENNSYLVANIA PIPELINE PROJECT
CONSTRUCTION SPREAD 1

1-20" PROPOSED WELDED STEEL NATURAL GAS PIPELINE
ALLEGHENY COUNTY CONSERVATION DISTRICT
EROSION & SEDIMENT CONTROL &
SITE RESTORATION PLAN
SHEET 7 OF 30

DATE:	NOVEMBER 2016
PROJECT NO.:	112C05958
DESIGNED BY:	JB
DRAWN BY:	BH
CHECKED BY:	RS
COPYRIGHT TETRA TECH INC.	
ES-1.07	
SHEET 1.07 OF 57	

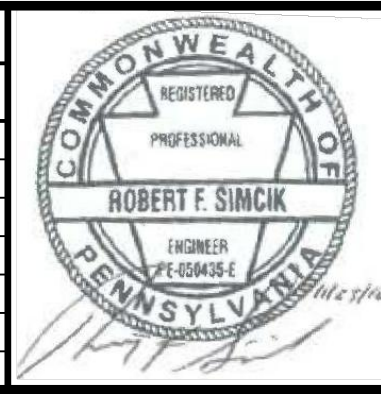


- NOTES:**
1. SEE ES-0.01 & ES-0.02 FOR GENERAL NOTES & LEGEND.
 2. SEE ES-0.03 FOR STREAM & WETLAND CROSSING TABLES.
 3. BMP INSTALLATION TO BE ADJUSTED AS NEEDED TO ACCOMMODATE ACTUAL CONTOURS IDENTIFIED IN FIELD DURING VARIOUS PHASES OF THE PROJECT.



TETRA TECH
www.tetrattech.com
661 ANDERSEN DRIVE - FOSTER PLAZA 7
PITTSBURGH, PA 15220
T: (412) 921-7090 | F: (412) 921-4040

REVISIONS			
NO.	BY	DATE	REMARKS



SUNOCO PIPELINE L.P.
SINKING SPRING, PENNSYLVANIA
**PENNSYLVANIA PIPELINE PROJECT
CONSTRUCTION SPREAD 1**

1-20" PROPOSED WELDED STEEL NATURAL GAS PIPELINE
ALLEGHENY COUNTY CONSERVATION DISTRICT
**EROSION & SEDIMENT CONTROL &
SITE RESTORATION PLAN
SHEET 25 OF 30**

DATE:	NOVEMBER 2016
PROJECT NO.:	112C05958
DESIGNED BY:	JB
DRAWN BY:	BH
CHECKED BY:	RS
COPYRIGHT TETRA TECH INC.	
ES-1.25	
SHEET 1.25 OF 57	