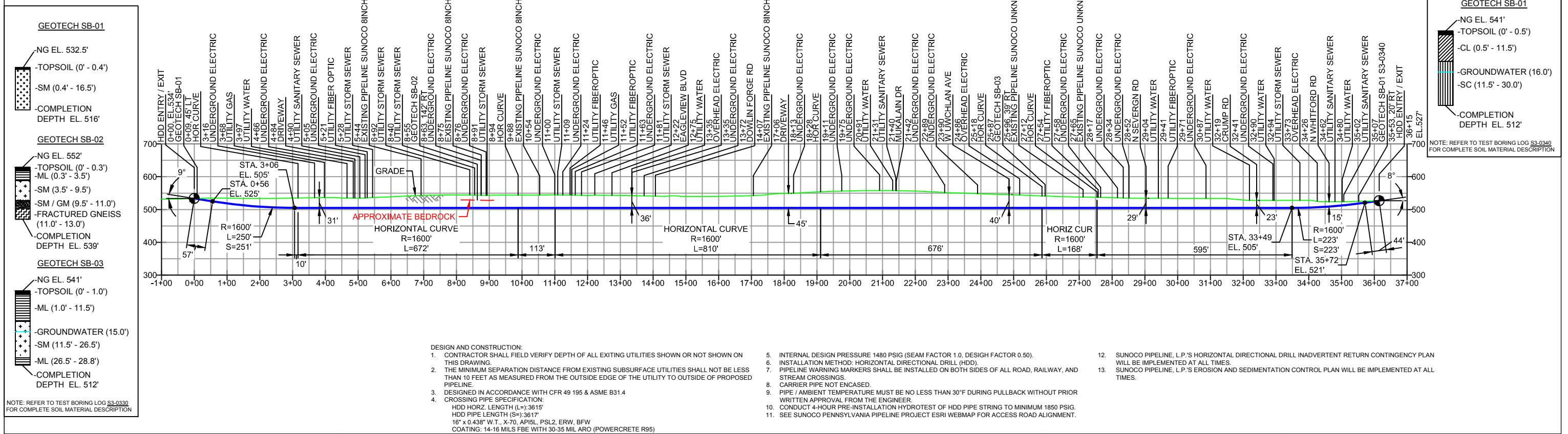


PROFILE VIEW

CHESTER COUNTY, PENNSYLVANIA - UWCHLAN TOWNSHIP
S3-0331-16



- NOTES**
- ALL COORDINATES SHOWN ARE IN LATITUDE AND LONGITUDE. ALL MSL ELEVATIONS ARE NAD83
 - STATIONING IS BASED ON HORIZONTAL DISTANCES.
 - ROONEY ENGINEERING, INC. AND SUNOCO PIPELINE, LP ARE NOT RESPONSIBLE FOR LOCATION OF FOREIGN UTILITIES SHOWN IN PLOT PLAN OR PROFILE. THE INFORMATION SHOWN HEREON IS FURNISHED WITHOUT LIABILITY ON THE PART OF ROONEY ENGINEERING, INC. AND SUNOCO PIPELINE, LP. FOR ANY DAMAGES RESULTING FROM ERRORS OR OMISSIONS THEREIN.
 - CONTRACTOR IS RESPONSIBLE FOR LOCATING ALL UTILITIES. CONTACT ONE CALL AT 811 PRIOR TO DIGGING.
 - SUNOCO EMERGENCY HOTLINE NUMBER IS #1-800-786-7440.

REF. DRAWING		EROSION & SEDIMENT PLAN	
ES-6.38	TO	ES-6.40	EROSION & SEDIMENT PLAN
SHEET 22	TO	SHEET 23	AERIAL SITE PLAN
			EP2 REVISED PER PADEP COMMENTS RECEIVED 09-06-16
			EP1 REVISED PER PADEP COMMENTS
			EP
			B ADDED GEOTECH INFO
			A ISSUED FOR BID
DWG NO	DWG NO	DESCRIPTION	NO.

REVISIONS					
MRS	10/07/16	RMB	10/07/16	AAW	10/07/16
MRS	05/11/16	RMB	05/11/16	AAW	05/11/16
MRS	03/15/16	RMB	03/15/16	AAW	03/15/16
MRS	09/29/15	RMB	09/29/15	AAW	09/29/15
MRS	08/31/15	RMB	03/29/15	AAW	08/31/15
BY	DATE	CHK	DATE	APP	DATE

Sunoco Logistics Partners L.P.

TETRA TECH ROONEY
(303) 792-5911

SUNOCO PIPELINE, L.P.

16-INCH HORIZONTAL DIRECTIONAL DRILL
ENGLEWOOD BLVD
PENNSYLVANIA PIPELINE PROJECT

SCALE: 1"=300' DWG. NO. PA-CH-0138.0000-RD-16