

Legend

- Proposed Centerline
- Original Proposed Route
- ME1 40 ft Maintenance Corridor
- - - Existing Gas Line
- - - Existing Electric Line
- PA Conservation Stewardship-Managed Conservation Lands
- PA Game Commission State Gameland
- CNHI Core
- CNHI Supporting
- Archeological Site
- Municipal Boundary
- NRHP Areas
- ▲ NRHP Locations
- NWI
- Field Delineated Wetlands

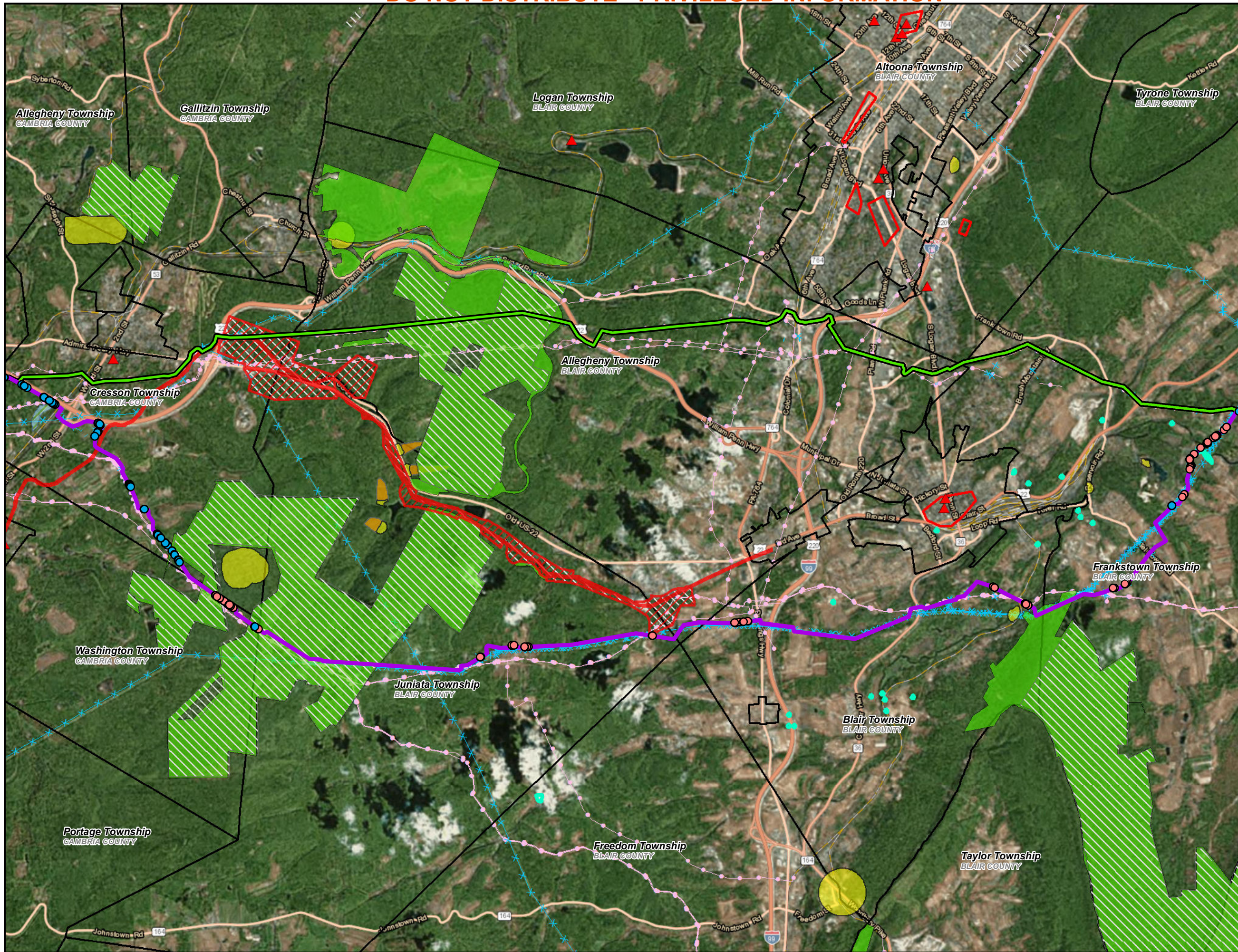
0 1,000 2,000 Feet

↑
N

Figure 1. Blairsville Northern Bypass Alternative

Prepared By:	Date:
TETRA TECH	10/2016

Base Map; ESRI World Imagery, May 2015
Coordinate System: WGS 84



PROJECT LOCATION

Legend

- Proposed Centerline
- Original Proposed Route
- ME1 40 ft Maintenance Corridor
- Existing Gas Line
- Existing Electric Line
- PA Conservation Stewardship-Managed Conservation Lands
- PA Game Commission State Gameland
- CNHI Core
- CNHI Supporting
- Municipal Boundary
- Allegheny Portage Railroad
- Archeological Site
- NRHP Areas
- NRHP Locations
- NWI
- Field Delineated Wetlands
- EV Field Delineated Wetlands

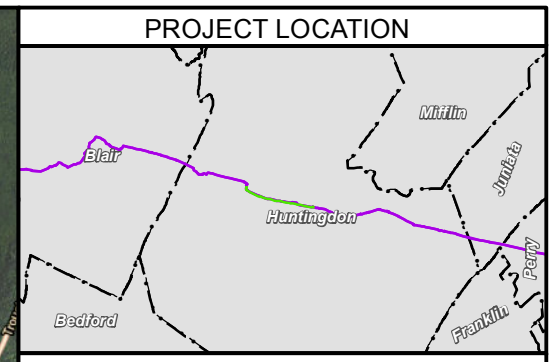
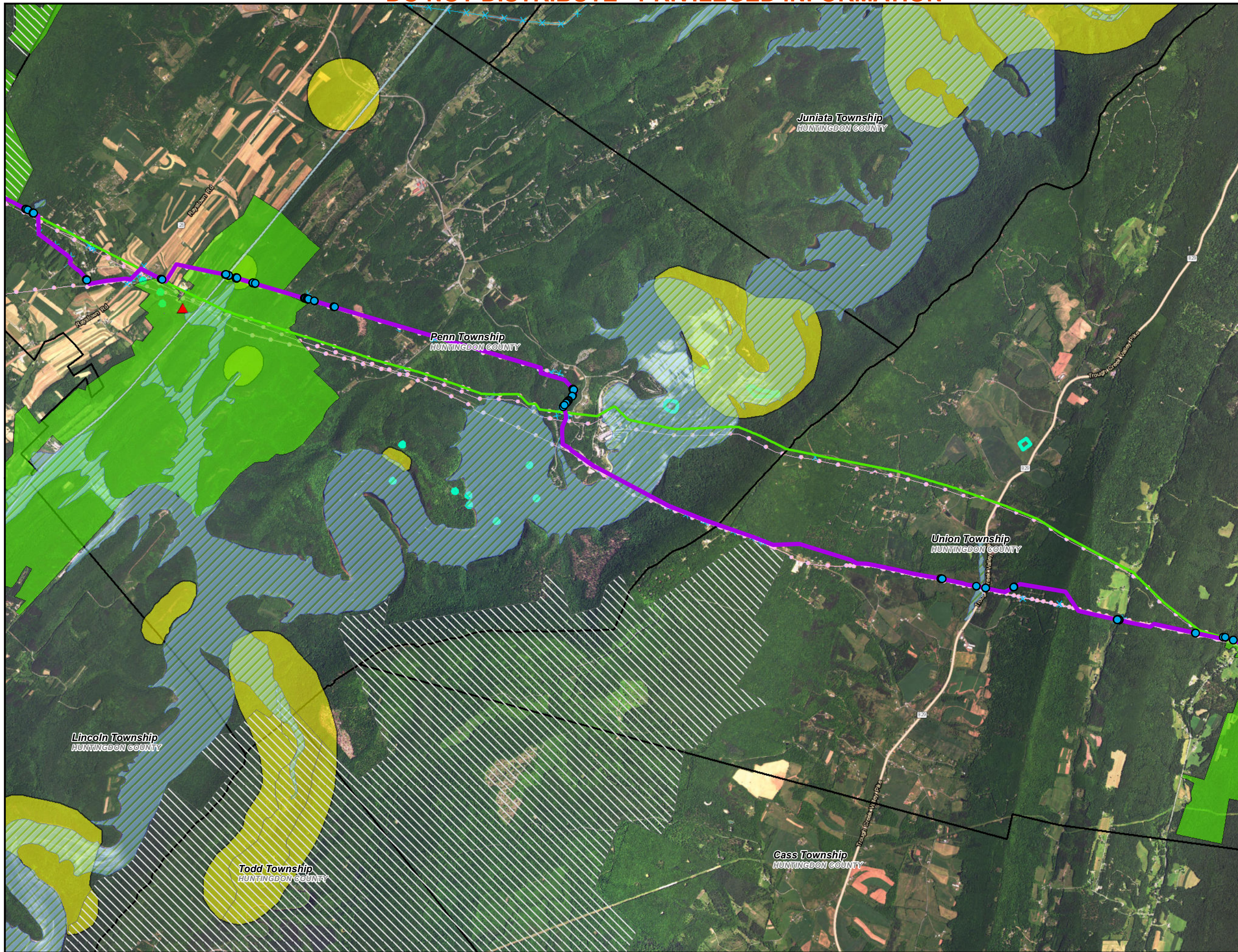
0 0.5 1 Miles

Figure 2. Cresson-Altoona Southern Bypass Alternative

Prepared By:	Date:
TETRA TECH	10/2016

Base Map;
ESRI World Imagery, May 2015

Coordinate System: WGS 84



Legend

- Proposed Centerline
- Original Proposed Route
- ME1 40 ft Maintenance Corridor
- Existing Gas Line
- x Existing Electric Line
- PA Conservation Stewardship-Managed Conservation Lands
- PA Game Commission State Gameland
- CNHI Core
- Municipal Boundary
- NWI
- Field Delineated Wetlands

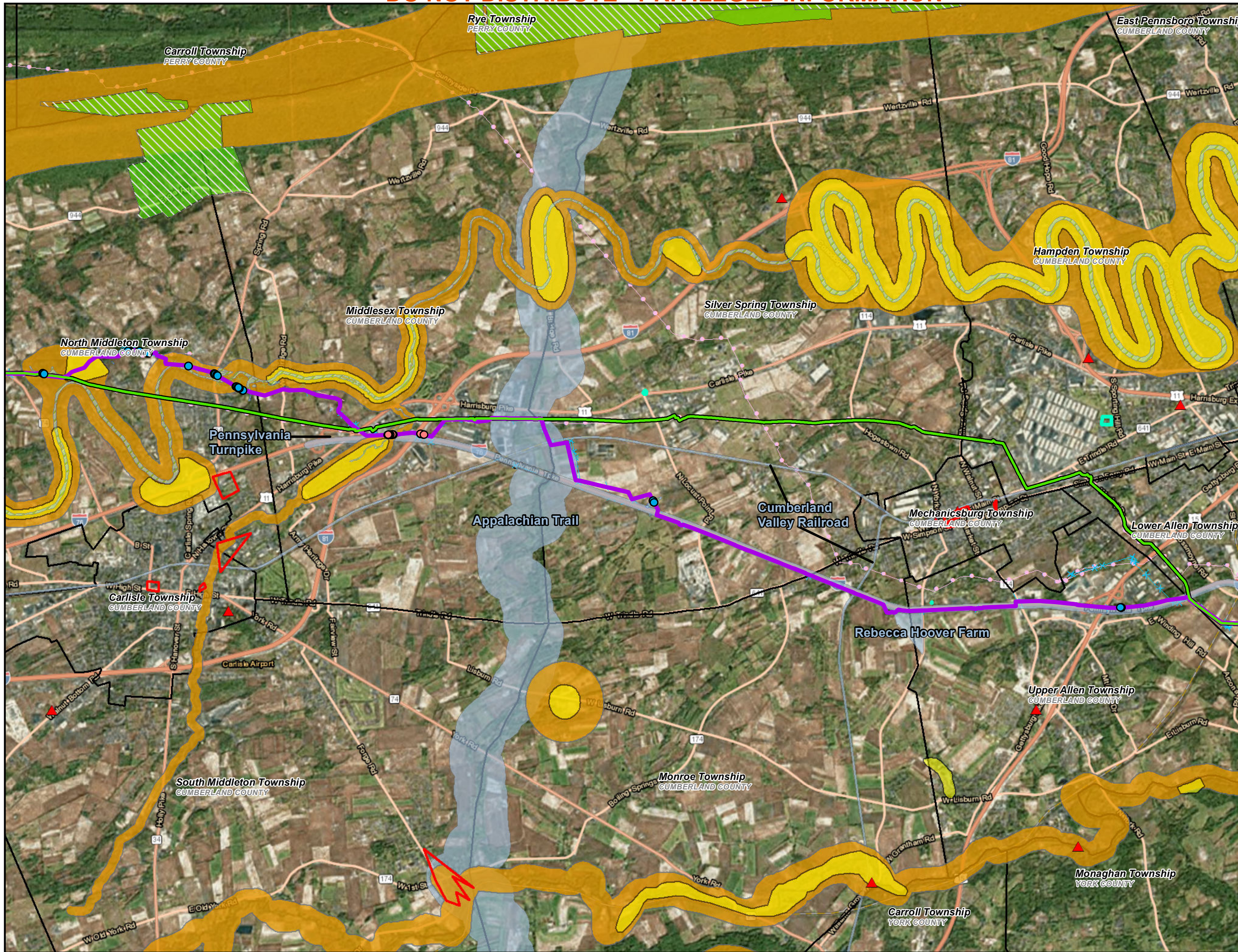
0 2,000 4,000 Feet

Figure 3. Raystown Lake Crossing Alternative

Prepared By:	Date:
	10/2016

Base Map;
ESRI World Imagery, May 2015

Coordinate System: WGS 84



PROJECT LOCATION

Legend

- Proposed Centerline
- Original Proposed Route
- ME1 40 ft Maintenance Corridor
- Existing Gas Line
- x x x Existing Electric Line
- PA Conservation Stewardship-Managed Conservation Lands
- PA Game Commission State Gameland
- CNHI Core
- CNHI Supporting
- Municipal Boundary
- Historic District
- NRHP Areas
- ▲ NRHP Locations
- NWI
- Field Delineated Wetlands
- EV Field Delineated Wetlands

0 0.5 1 Miles

Figure 4. North Middleton and Mechanicsburg Bypass Alternative

Prepared By:	Date:
	10/2016

Base Map; ESRI World Imagery, May 2015
Coordinate System: WGS 84