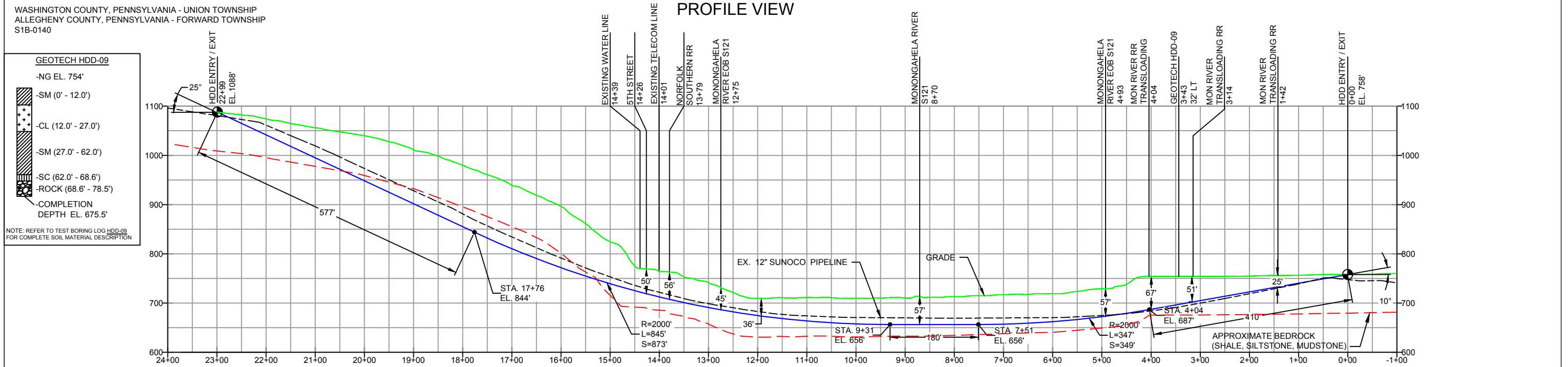
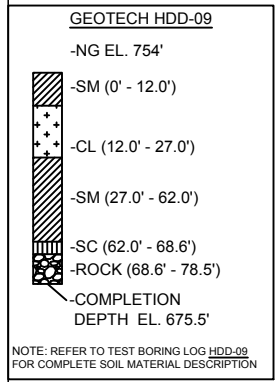


WASHINGTON COUNTY, PENNSYLVANIA - UNION TOWNSHIP
ALLEGHENY COUNTY, PENNSYLVANIA - FORWARD TOWNSHIP
S1B-0140



NOTES

- ALL COORDINATES SHOWN ARE IN LATITUDE AND LONGITUDE. ALL MSL ELEVATIONS ARE NAD83
- STATIONING IS BASED ON HORIZONTAL DISTANCES.
- ROONEY ENGINEERING, INC. AND SUNOCO PIPELINE, LP ARE NOT RESPONSIBLE FOR LOCATION OF FOREIGN UTILITIES SHOWN IN PLOT PLAN OR PROFILE. THE INFORMATION SHOWN HEREON IS FURNISHED WITHOUT LIABILITY ON THE PART OF ROONEY ENGINEERING, INC. AND SUNOCO PIPELINE, LP. FOR ANY DAMAGES RESULTING FROM ERRORS OR OMISSIONS THEREIN.
- CONTRACTOR IS RESPONSIBLE FOR LOCATING ALL UTILITIES. CONTACT ONE CALL AT 811 PRIOR TO DIGGING.
- SUNOCO EMERGENCY HOTLINE NUMBER IS #1-800-786-7440.

| REF. DRAWING | | REVISIONS | |
|--------------|-------------|-------------------------|--|
| ES-1.59 | TO ES-1.01 | EROSION & SEDIMENT PLAN | |
| SHEET 35 | TO SHEET 36 | AERIAL SITE PLAN | |
| | | EP2 | REVISED PER PADEP COMMENTS RECEIVED 09-06-16 |
| | | EP1 | REVISED PER PADEP COMMENTS |
| | | EP | |
| DWG NO | DWG NO | DESCRIPTION | NO. |

Sunoco Logistics Partners L.P.

TETRA TECH ROONEY
(303) 792-5911

SUNOCO PIPELINE, L.P.

20-INCH HORIZONTAL DIRECTIONAL DRILL
NORFOLK SOUTHERN RR, MONONGAHELA RIVER
PENNSYLVANIA PIPELINE PROJECT

SCALE: 1"=200' DWG. NO: PA-WA-0176.0000-RR