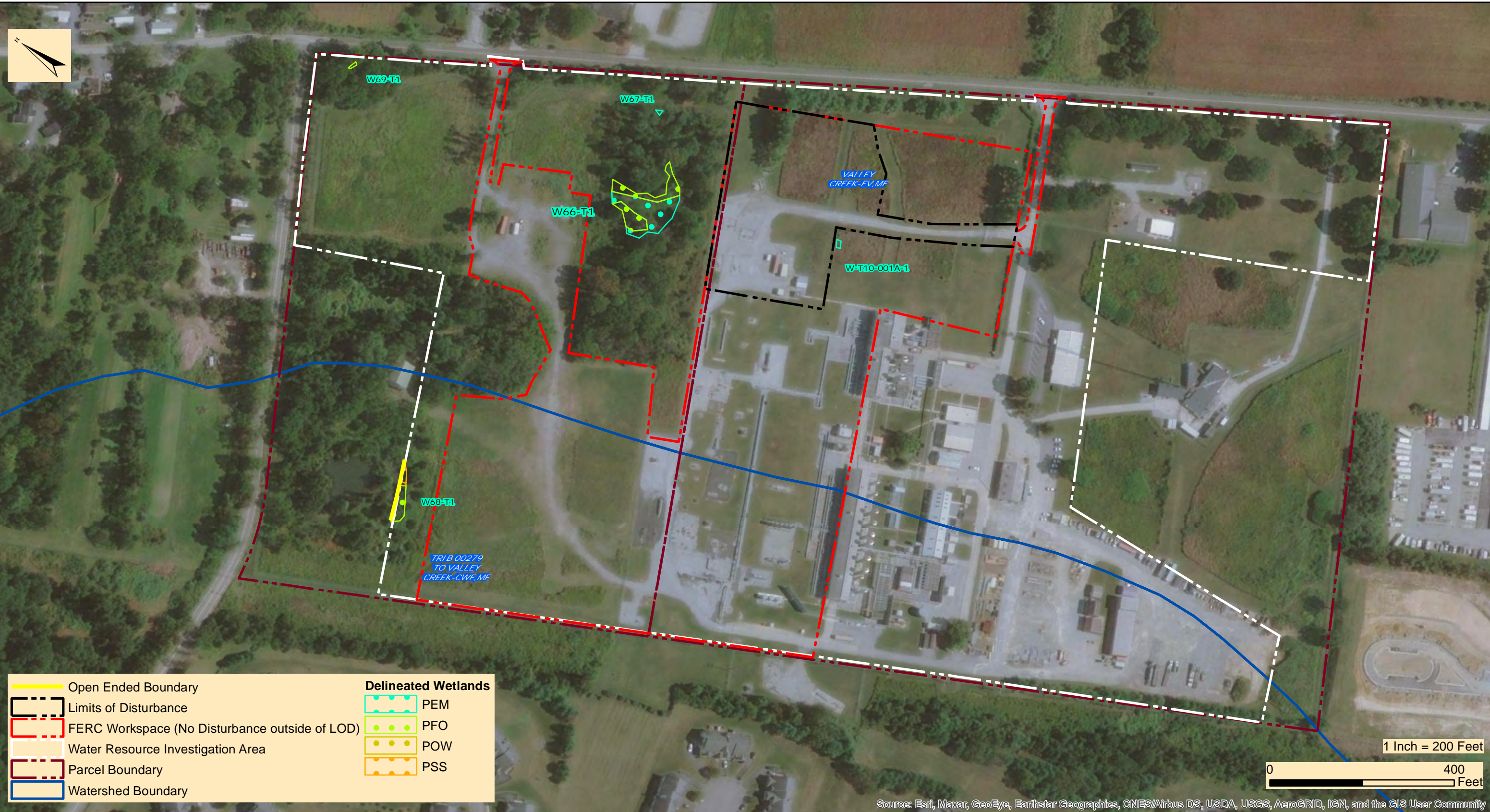


*Regional Energy Access Expansion Project
401 Water Quality Certification Application
Transcontinental Gas Pipe Line Company, LLC*

**SECTION 10.2.4
EXISTING COMPRESSOR STATION 200**

M:\GIS\PROJECTS\REGIONAL_ENERGY_ACCESS_COMPRESSOR_STATION_200\REA_401_Project_LocationMapping_01182021.mxd



Open Ended Boundary	Delineated Wetlands
Limits of Disturbance	PEM
FERC Workspace (No Disturbance outside of LOD)	PFO
Water Resource Investigation Area	POW
Parcel Boundary	PSS
Watershed Boundary	

Source: Esri, Maxar, GeoEye, Earthstar Geographics, CNES/Airbus DS, USDA, USGS, AeroGRID, IGN, and the GIS User Community



TRANSCONTINENTAL GAS PIPELINE COMPANY, LLC
REGIONAL ENERGY ACCESS EXPANSION PROJECT
COMPRESSOR STATION 200

SITE PLANS

EAST WHITELAND TOWNSHIP

CHESTER COUNTY

PENNSYLVANIA

Date:	3/26/2021
WHM PROJECT NUMBER:	WILLIAMS20271
Drawn By:	FTN
Figure Number:	1