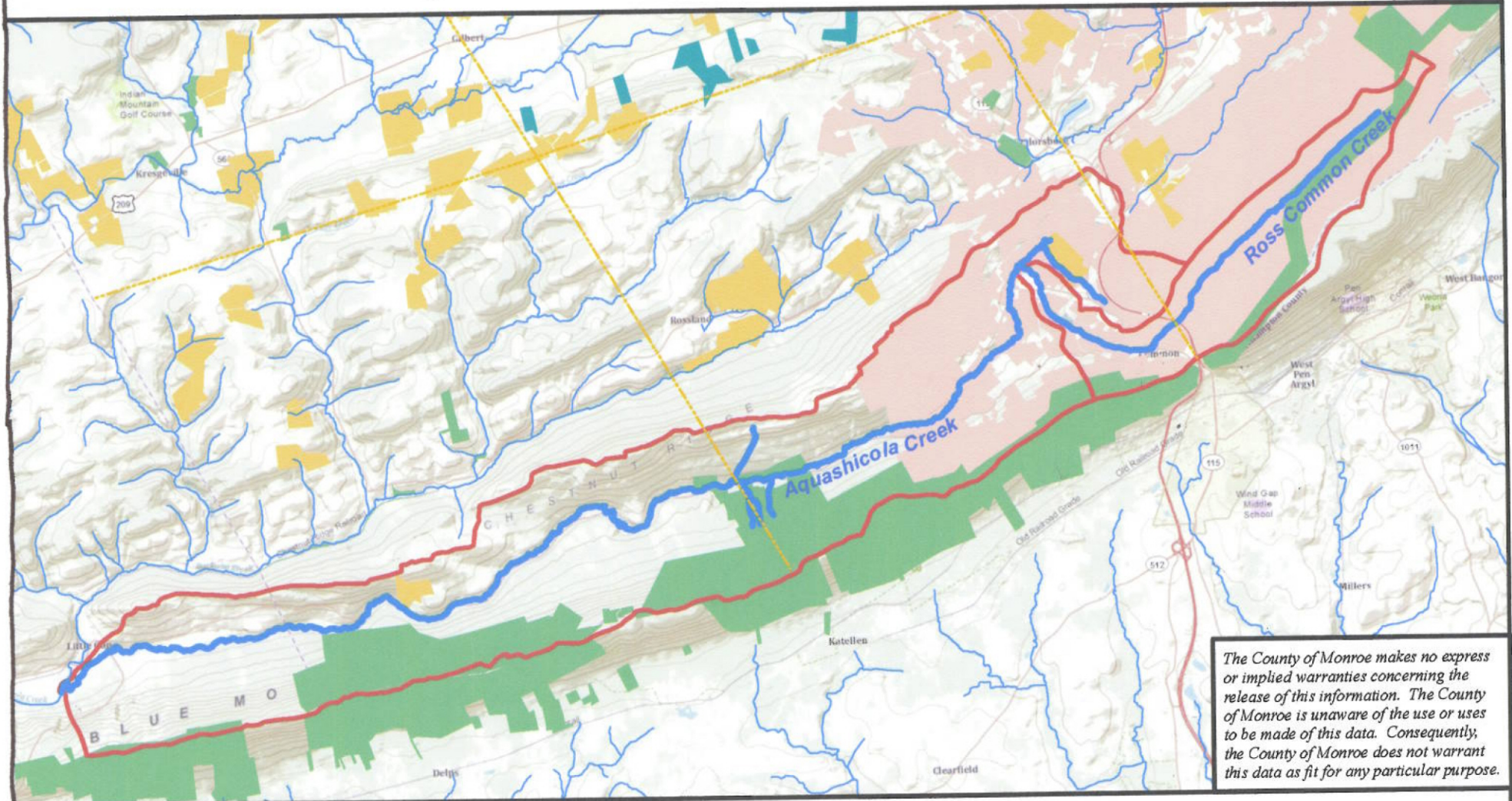
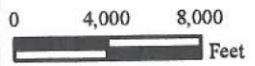


MAP 4: PROTECTED PROPERTIES

AQUASHICOLA & ROSS COMMON CREEKS









The County of Monroe makes no express or implied warranties concerning the release of this information. The County of Monroe is unaware of the use or uses to be made of this data. Consequently, the County of Monroe does not warrant this data as fit for any particular purpose.



1:99,313



LEGEND

-  Property Protected by Govt. Entity
-  Property Protected by Private Entity
-  Agricultural Conservation Easement
-  Aquashicola & Ross Common Creeks
-  Streams
-  Watershed Boundary



www.co.monroe.pa.us/planning

PREPARED BY

**Monroe County
Planning Commission**

1 Quaker Plaza, Room 106
Stroudsburg, PA 18360
(570) 517-3100
mcpcc@co.monroe.pa.us

August 2010