

# Proposed Stream Redesignations Fishing Creek, et. al

Environmental Quality Board

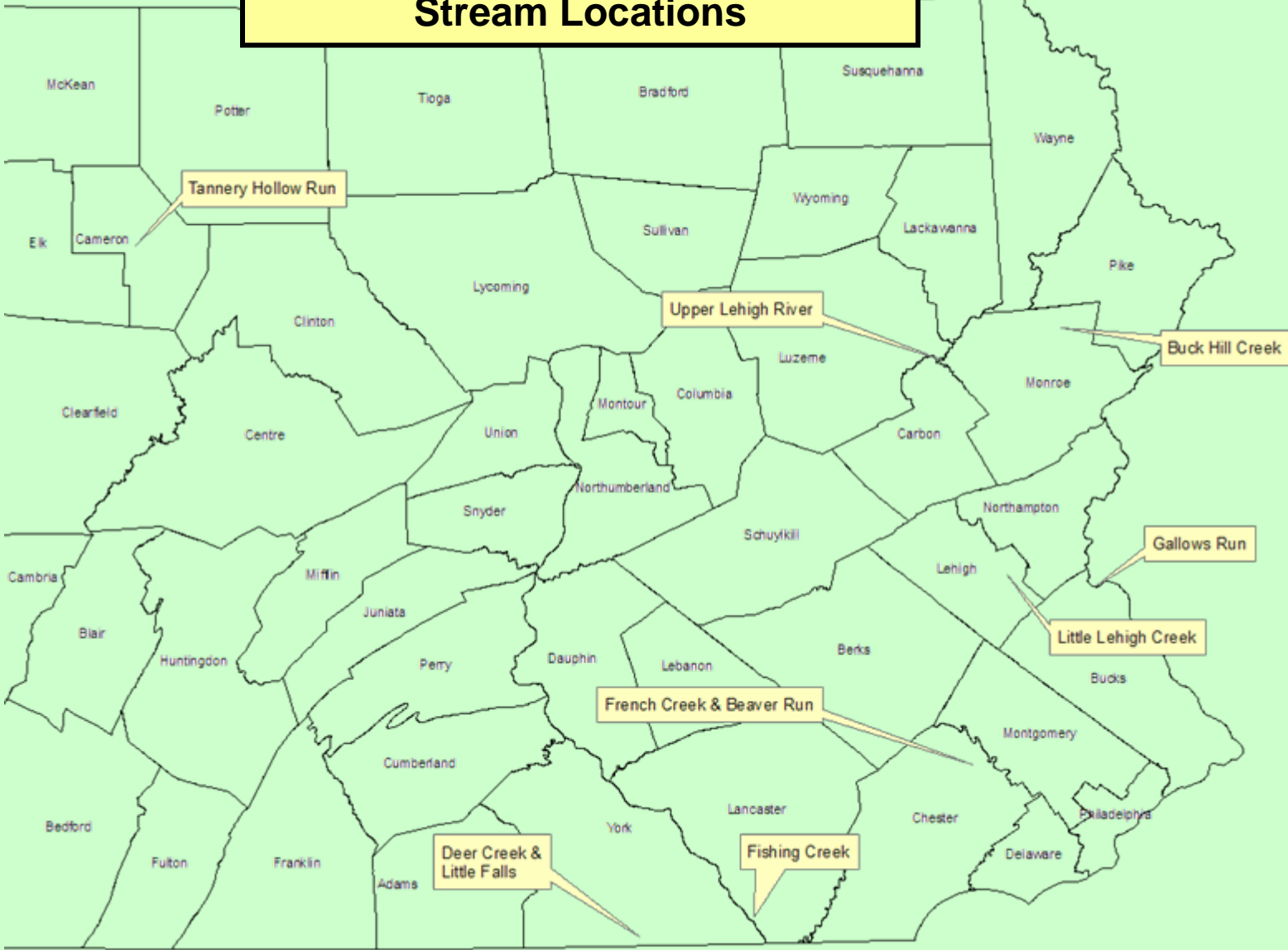
July 13, 2010

Bureau of Water Standards and Facility Regulation  
Division of Water Quality Standards



# Fishing Creek Package

## Stream Locations



## Fishing Creek, et al. Stream Redesignations Package

| Stream                      | County                             | Reach  | List | Present Designation      | Requested Designation | Recommended Designation  |
|-----------------------------|------------------------------------|--|------|--------------------------|-----------------------|--|
| <b>Buck Hill Creek</b>      | Monroe                             | Basin, from and including UNT 05028 to and including UNT 05026   | C    | HQ-CWF, MF               | EV                    | EV   |
| <b>Lehigh River (upper)</b> | Lackawanna, Monroe, Wayne, Luzerne | Basin, source to (but not including) Tobyhanna Creek.  | D    | HQ-CWF, MF               | EV, MF                | EV, MF   |
| <b>Little Lehigh Creek</b>  | Lehigh, Berks                      | Mainstem   | D    | HQ-CWF, MF               | EV, MF                | HQ-CWF, MF (no change)   |
| <b>Gallows Run</b>          | Bucks                              | Basin  | E    | CWF, MF                  | HQ-CWF, MF            | CWF, MF (no change)  |
| <b>Beaver Run</b>           | Chester                            | Basin  | F    | HQ-TSF, MF               | EV, MF                | EV, MF   |
| <b>French Creek</b>         | Chester                            | Basin, from Beaver Run to junction of West Vincent, East Vincent, and East Pikeland Townships (except Birch Run basin) | F    | HQ-TSF, MF               | EV, MF                | Mainstem, from Beaver Run to junction of West Vincent, East Vincent, and East Pikeland Townships: EV, MF |
| <b>French Creek</b>         | Chester                            | Mainstem, from junction of West Vincent, East Vincent, and East Pikeland Townships to T522 Bridge                      | F    | TSF, MF                  | ---                   | EV, MF   |
| <b>Tannery Hollow Run</b>   | Cameron                            | Basin  | L    | CWF, MF                  | EV, MF                | EV, MF   |
| <b>Fishing Creek</b>        | Lancaster                          | Basin, from and including UNT 07256 (near T434 bridge) to mouth  | O    | Entire basin: HQ-CWF, MF | Entire basin: EV, MF  | Basin, from and including UNT 07256 to mouth: EV, MF   |
| <b>Deer Creek</b>           | York                               | Basin (all sections in PA)   | O    | CWF, MF                  | HQ-CWF                | CWF, MF (no change)  |
| <b>Little Falls</b>         | York                               | Basin (all sections in PA)   | O    | WWF, MF                  | HQ-CWF                | CWF, MF  |

# Buck Hill Creek Proposed Designation

COOLBAUGH TWP.

BARRETT TWP.

Monroe Co.

Spruce Mountain Run

Laurel Run

Leavitt Branch

Gliscorn Creek

Middle Branch Brodhead Creek

Buck Hill Creek

UNT 05027

UNT 05028

UNT 05026

Buck Hill Falls

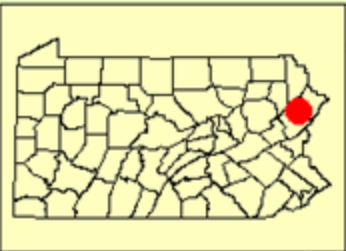
Buck Hill Creek

Brodhead Creek

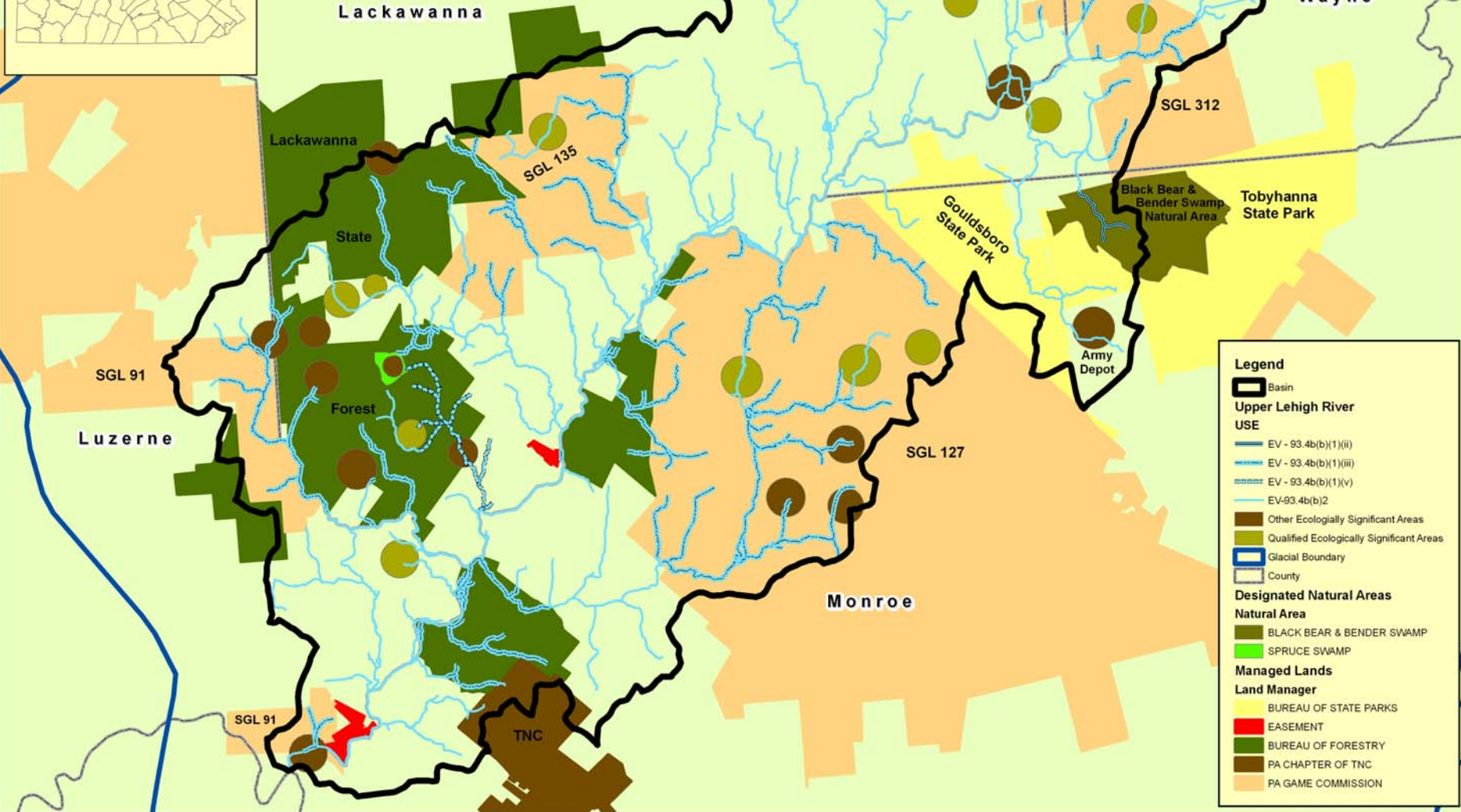
EV Reference station on Buck Hill Creek  
downstream from the candidate segment

## Legend Designated Use

- EV
- EV (Proposed)
- HQ-CWF



# Proposed Designations for upper Lehigh River



**Legend**

- Basin
- Upper Lehigh River USE**
  - EV - 93.4b(1)(ii)
  - EV - 93.4b(1)(iii)
  - EV - 93.4b(1)(v)
  - EV-93.4b(b)2
- Other Ecologically Significant Areas
- Qualified Ecologically Significant Areas
- Glacial Boundary
- County
- Designated Natural Areas**
- Natural Area**
  - BLACK BEAR & BENDER SWAMP
  - SPRUCE SWAMP
- Managed Lands**
- Land Manager**
  - BUREAU OF STATE PARKS
  - EASEMENT
  - BUREAU OF FORESTRY
  - PA CHAPTER OF TNC
  - PA GAME COMMISSION

# Ecological Significance

- The Upper Lehigh River petition area is largely intact and undisturbed, which provides excellent *“Ecological Connectance”*.
- Because of this Ecological Connectance, the Upper Lehigh River basin is an area of tremendous ecological significance due to the distribution and high concentration of ecologically significant rare and unique endemic natural communities found in the area.

# Ecological Significance

(continued)

These Upper Lehigh River basin characteristics:

- Ecological Connectance
- Large Tracts of Intact and Undisturbed Areas
- Southern Extent of Glacial Geology

create conditions that support the Exceptional Value criteria in Chapter 93

# 25 Pa. Code Section 93.4b(b)(1)(ii) Upper Lehigh River

- Surface water currently designated High Quality +
- Water located in a designated State Park Natural Area or State Forest Natural Area
- Designated Tobyhanna State park natural areas:  
Black Bear and Bender Swamps
- Designated Lackawanna State forest natural areas:  
Spruce Swamp
- 2.3 stream miles qualify as EV



# 25 Pa. Code Section 93.4b(b)(1)(iii)

## Upper Lehigh River

- Surface water currently designated High Quality +
- Water is an outstanding state resource water:
  - State agency has adopted “water quality protective measures” in a resource management plan
  - Measures taken provide long-term protection of watershed corridor
- DCNR Bureau of Forestry: Aquatic Habitat Buffer Guidelines (2007)
- PA Game Commission: Aquatic Habitat Buffer Guidelines (2009)
- 79.1 stream miles qualify as EV

# 25 Pa. Code Section 93.4b(b)(1)(v) Upper Lehigh River

- Surface water currently designated High Quality +
- Water achieves a biological condition score of at least 92%
- Sand Spring Creek basin exceeded 92% (scored 100%; EV Reference Station = Dimmick Meadow Brook in Pike Co)
- 5.5 stream miles qualify as EV

# 25 Pa. Code Section 93.4b(b)(2) Upper Lehigh River

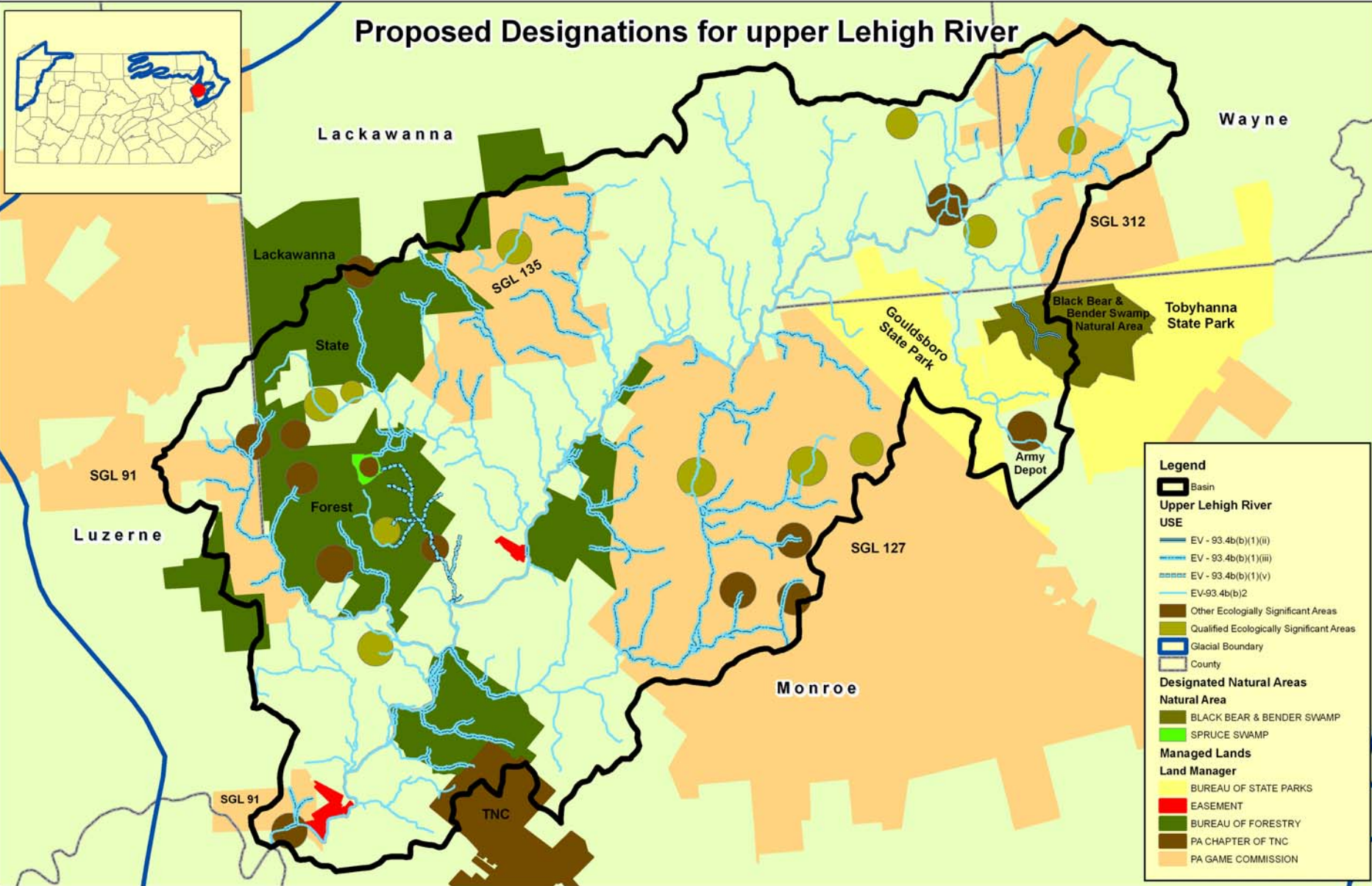
- Water is a “surface water of exceptional ecological significance”
  - “...important, unique or sensitive ecologically, but whose water quality as measured by traditional parameters may not be particularly high, or whose character cannot be adequately described by these parameters.”
- 22 watershed areas qualify for designation as EV based upon the criteria at §93.4b(b)(2) because of their exceptional ecological significance
- 132.4 stream miles qualify as EV

# 25 Pa. Code Section 93.4b(b)(2)

## Upper Lehigh River (continued)

- **7 Rare Ecological Community Types**
  - Natural pond
  - Mesic scrub oak-heath-pitch barrens
  - Northern conifer swamp
  - Acidic glacial lake
  - Boreal conifer swamp
  - Oligotrophic glacial kettlehole bog
- **Filtering function and ecological connectance**
  - Supports the natural diversity
  - Maintains, largely undisrupted, the ecology and hydrology of the basin

# Proposed Designations for upper Lehigh River



**Legend**

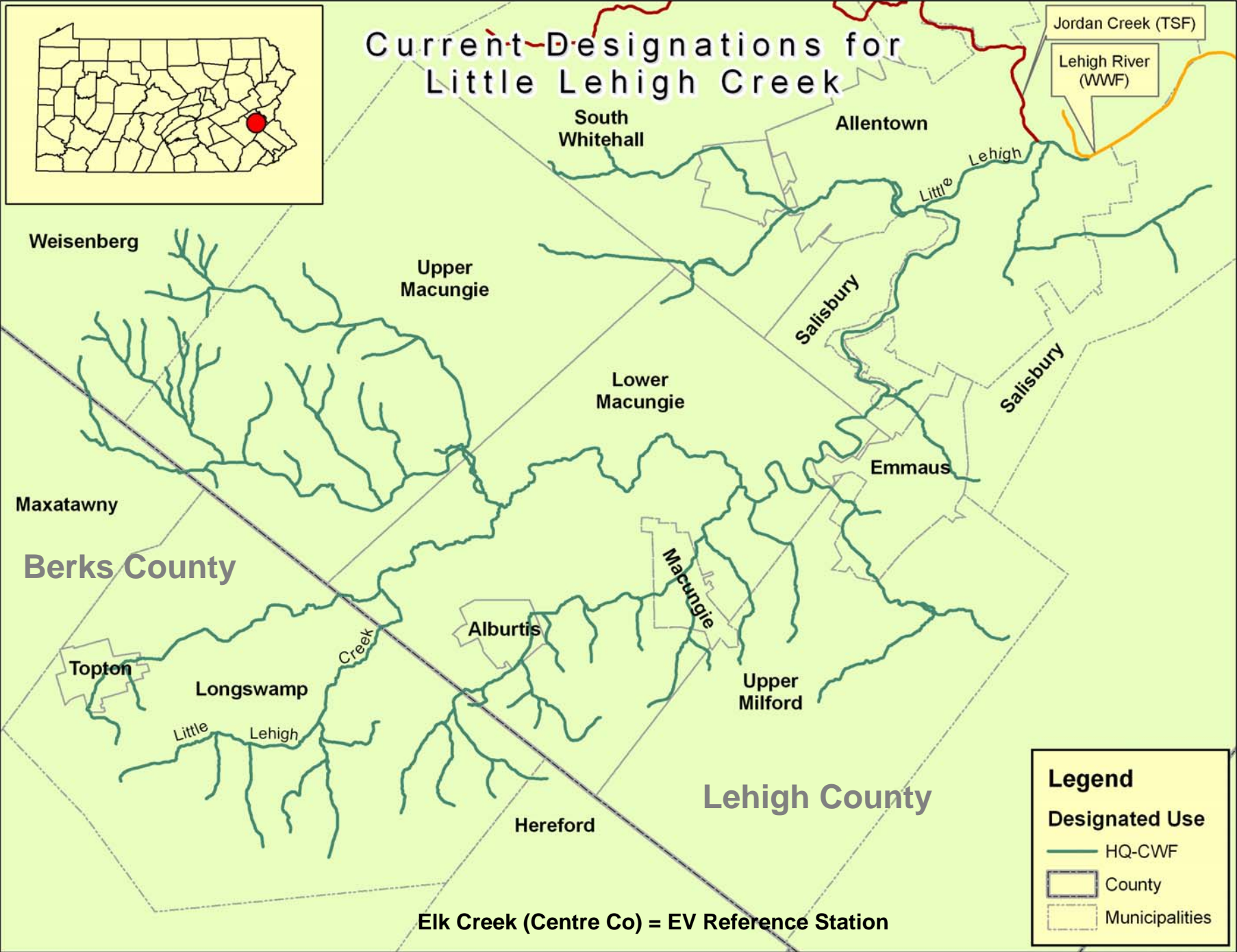
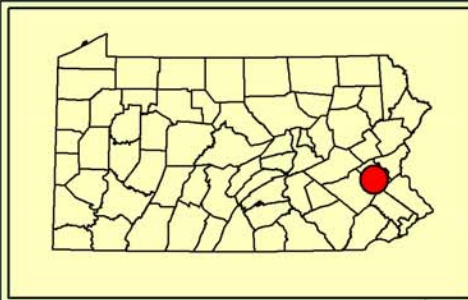
- Basin
- Upper Lehigh River USE**
  - EV - 93.4b(1)(i)
  - EV - 93.4b(1)(iii)
  - EV - 93.4b(1)(v)
  - EV-93.4b(b)2
- Other Ecologically Significant Areas
- Qualified Ecologically Significant Areas
- Glacial Boundary
- County
- Designated Natural Areas**
  - Natural Area
    - BLACK BEAR & BENDER SWAMP
    - SPRUCE SWAMP
- Managed Lands**
  - Land Manager
    - BUREAU OF STATE PARKS
    - EASEMENT
    - BUREAU OF FORESTRY
    - PA CHAPTER OF TNC
    - PA GAME COMMISSION

# Public **Support** for EV Recommendation of Upper Lehigh

- **Notice of Stream Redesignation Evaluation → Supportive Response**
  - Thornhurst Twp, Lackawanna Co.
  - Buck Twp, Lackawanna Co.
  - Monroe Co. Conservation District
- **30 day comment period for stream report → Supportive Response**
  - Lackawanna Co. Conservation District
  - Luzerne Co. Conservation District
  - Wayne Co. Conservation District
  - Pennsylvania Council of Trout Unlimited
  - Brodhead Chapter of Trout Unlimited
  - Stanley Cooper Sr. Chapter of Trout Unlimited
  - Lehigh Cold Water Fishery Alliance
  - Wildlands Conservancy
  - Riverside Estates Community Association
  - Thornhurst Twp, Lackawanna Co.
- **Additional letter of support from Monroe Co. Conservation District**
- **The Honorable Michael Carroll - 118<sup>th</sup> District, House of Representatives**

These supportive letters were provided by Barbara Smith who represents the petitioners (North Pocono CARE)

# Current Designations for Little Lehigh Creek



Jordan Creek (TSF)

Lehigh River (WWF)

South Whitehall

Allentown

Weisenberg

Upper Macungie

Lower Macungie

Salisbury

Salisbury

Maxatawny

Emmaus

Berks County

Macungie

Alburdis

Upper Milford

Tipton

Longswamp

Little Lehigh

Creek

Hereford

Lehigh County

Elk Creek (Centre Co) = EV Reference Station

## Legend

### Designated Use

- HQ-CWF
- County
- Municipalities

# Gallows Run

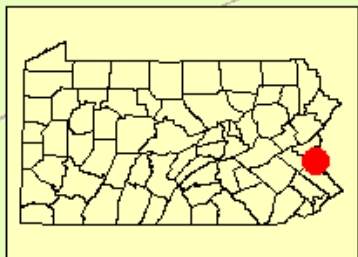
DURHAM

BRIDGETON

SPRINGFIELD

Bucks

NOCKAMIXON



Pine Creek (Berks Co) = EV Reference Station

## Legend Current Designated Use

- CWF, MF
- Delaware River



# Present Designations for French Creek and Beaver Run

Chester County



Berks County

North Coventry

Union

French Creek

Robeson

South Coventry

Warwick

East Vincent

Elverson

West Nantmeal

East Nantmeal

West Vincent

East Pikeland

## Legend

### Streams

### Designated Use

— EV

— HQ

— TSF

□ Municipalities

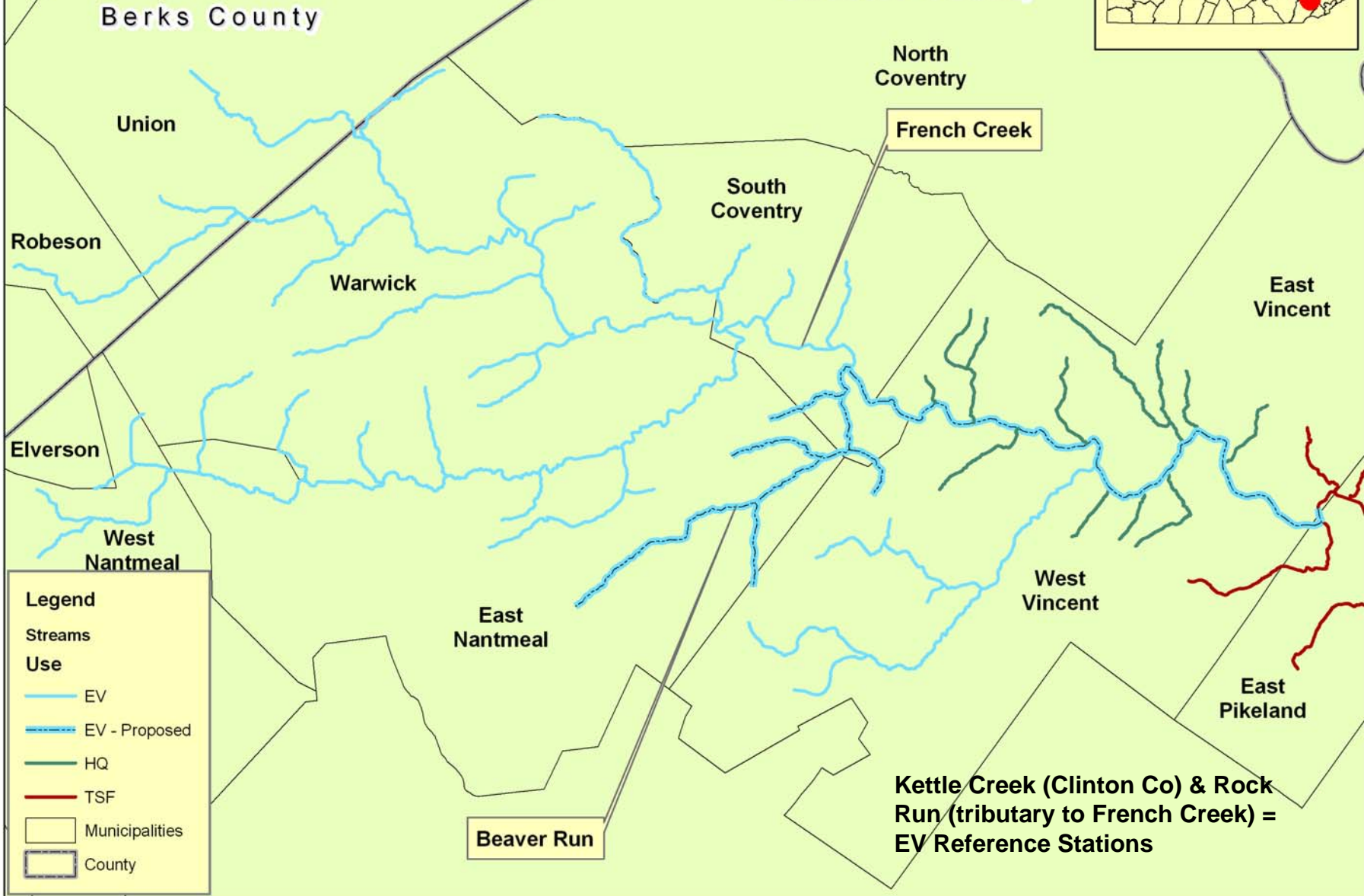
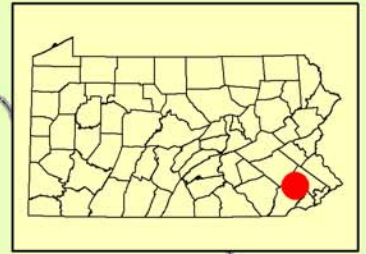
□ County

Beaver Run

Kettle Creek (Clinton Co) & Rock Run (tributary to French Creek) = EV Reference Stations

# Proposed Designations for French Creek and Beaver Run

Chester County



# Tannery Hollow Run

SHIPPEN

Sterling Run

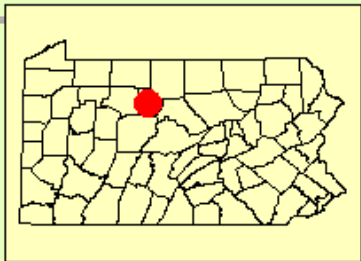
LUMBER

Cameron

Tannery Hollow Run

GIBSON

Trout Run (Clinton Co) = EV Reference Station

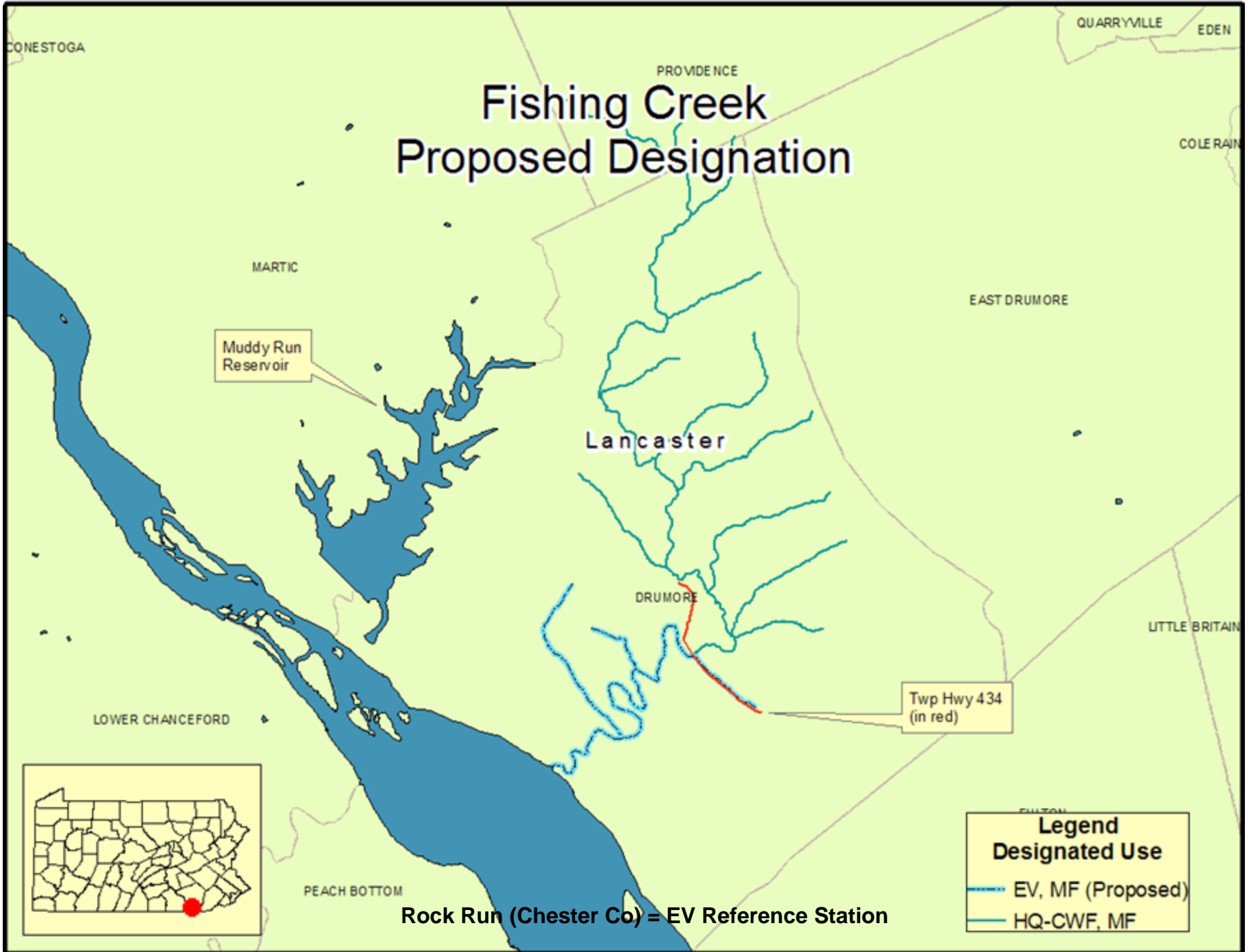


BENEZETTE

Elk

## Legend Proposed Designated Use

- CWF, MF
- HQ-CWF, MF
- EV, MF - (proposed)



# Fishing Creek Proposed Designation

Muddy Run  
Reservoir

Lancaster

DRUMORE

Twp Hwy 434  
(in red)



**Legend**  
**Designated Use**

- EV, MF (Proposed)
- HQ-CWF, MF

Rock Run (Chester Co) = EV Reference Station

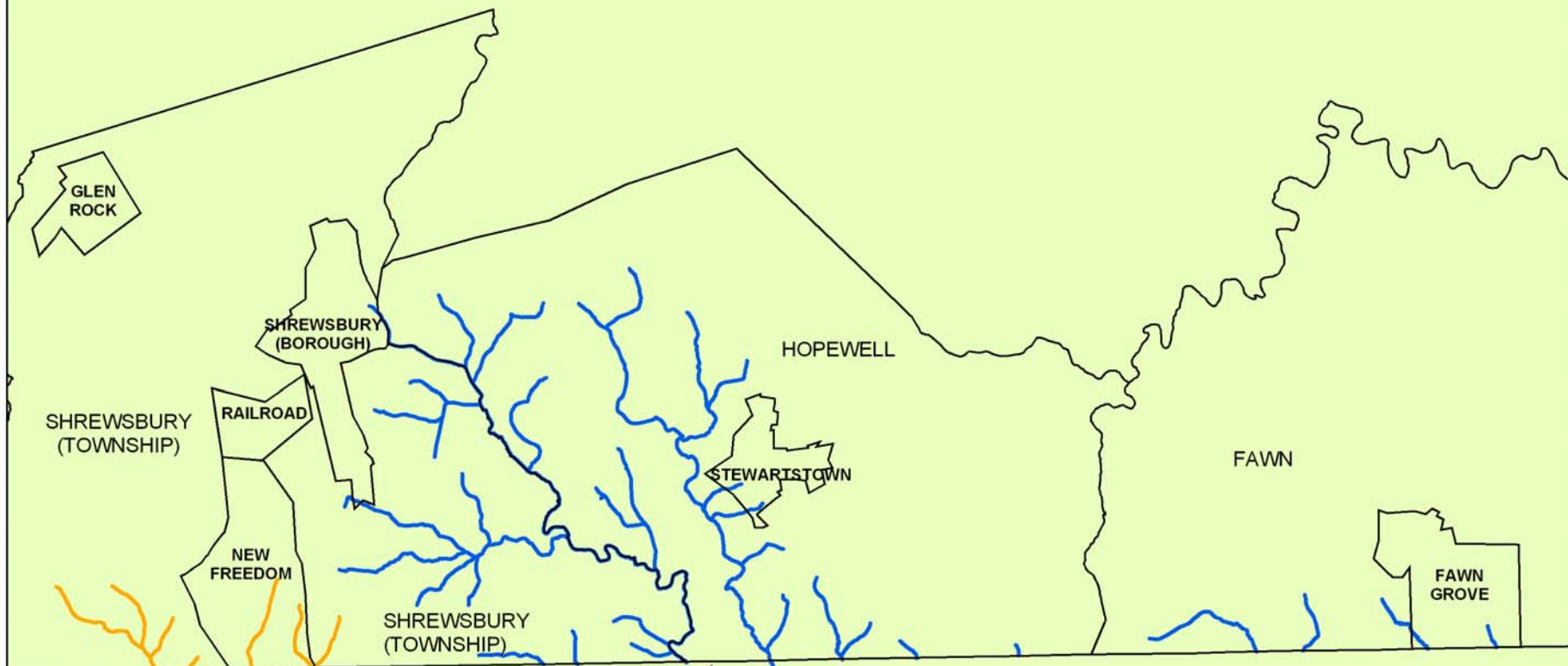
# 25 Pa. Code Section 93.4b(b)(2)

## Fishing Creek

- Water is a “*surface water of exceptional ecological significance*”
- 7.27 stream miles qualify as EV
- The population of Chesapeake Logperch in Fishing Creek represents a significant portion of the total global population of this species

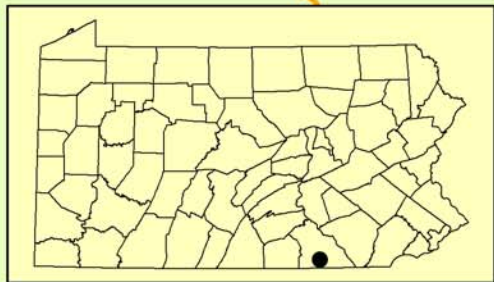


# Present Designation for Deer and Little Falls Creeks



Pa/Md State line

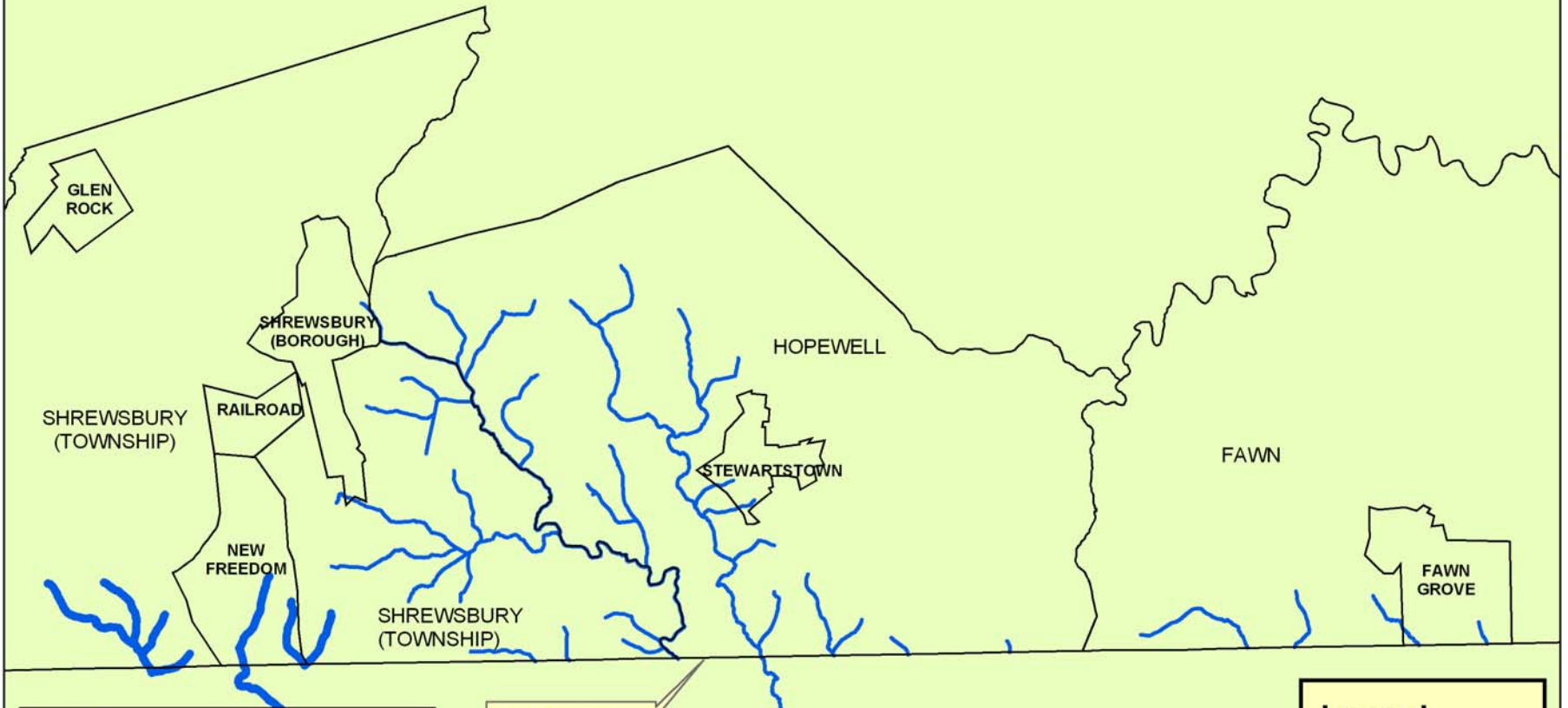
Rock Run (Chester Co) = EV Reference Station



**Legend**

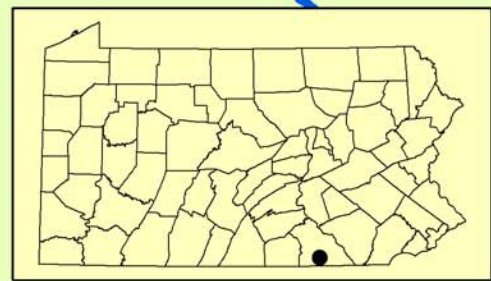
- Municipalities
- Streams
- Designated Use**
  - CWF
  - WWF

# Proposed Designation for Deer and Little Falls Creeks



Pa/Md State line

Rock Run (Chester Co) = EV Reference Station



**Legend**

- Municipalities
- Streams
- USE**
- CWF
- CWF (Proposed)