

Legend

- Investigation Area
- Potential Source Investigation Area

Sample Results

- Awaiting sample results
- Above MSC/HAL
- Above MSC/HAL (pre-treatment)
- Below MSC/HAL
- Not sampled
- Third Party Sample - Below MSC/HAL

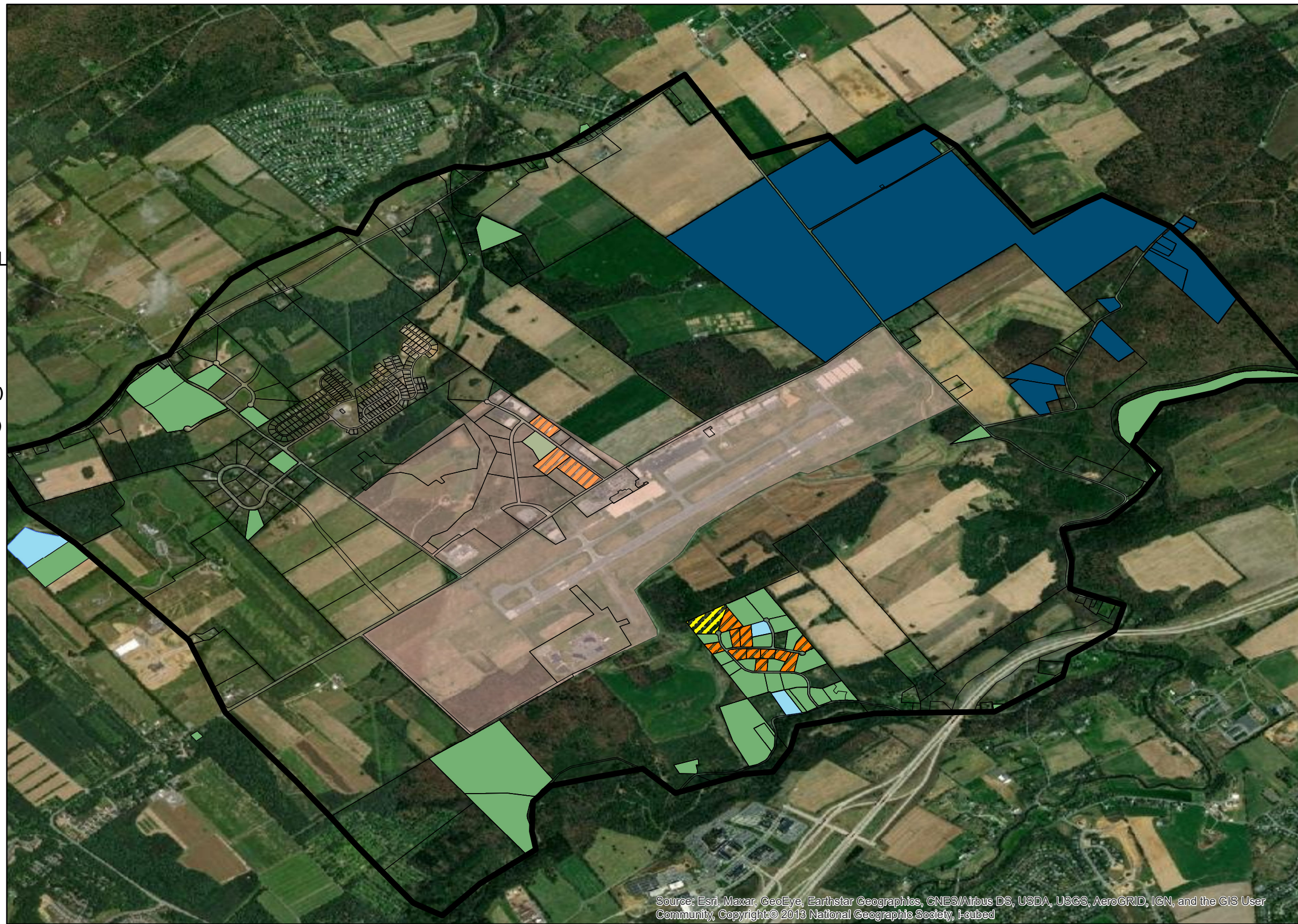
PA's groundwater cleanup standard (MSC) is equal to the USEPA's established Lifetime Health Advisory Level (HAL) of 70 nanograms per liter (ng/L) for the combined concentration of perfluorooctanoic acid (PFOA) and perfluorooctanesulfonic acid (PFOS).

The Investigation Area is primarily bounded in the north by Buffalo Run Road, in the west by Bernal Road, in the south by Big Hollow Road, and in the east by Rock Road/Barns Lane.

The Potential Source Investigation Area is centered around the University Park Airport and various industry located to the north along High Tech Road.

Benner Twp PFAS Investigation Area

Updated: May 12, 2022



Source: Esri, Maxar, GeoEye, Earthstar Geographics, CNES/Airbus DS, USDA, USGS, AeroGRID, IGN, and the GIS User Community, Copyright © 2013 National Geographic Society, I-cubed

