









Benner Twp PFAS Investigation Area

Updated: September 30, 2022



Legend

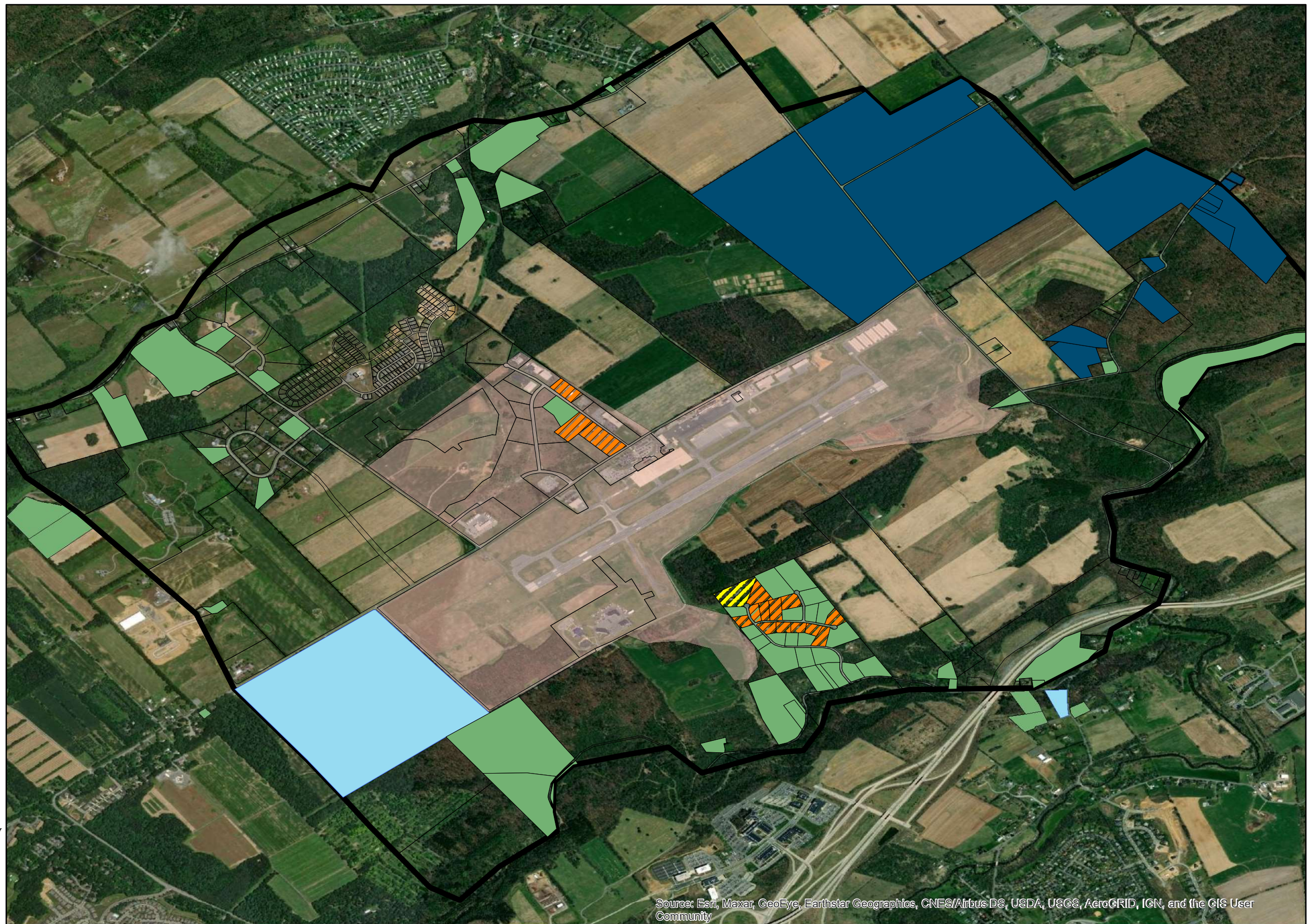
Sample Results

-  Awaiting sample results
-  Above MSC
-  Above MSC (pre-treatment)
-  Below MSC
-  Not sampled
-  Third Party Sample - Below MSC
-  Investigation Area
-  Potential Source Investigation Area

* PA's groundwater cleanup standard (MSC) is equal to 70 nanograms per liter (ng/L) for the combined concentration of perfluorooctanoic acid (PFOA) and perfluorooctanesulfonic acid (PFOS).

The Investigation Area is primarily bounded in the north by Buffalo Run Road, in the west by Bernal Road, in the south by Big Hollow Road, and in the east by Rock Road/Barns Lane.

The Potential Source Investigation Area is centered around the University Park Airport and various industry located to the north along High Tech Road.



Source: Esri, Maxar, GeoEye, Earthstar Geographics, CNES/Airbus DS, USDA, USGS, AeroGRID, IGN, and the GIS User Community

