

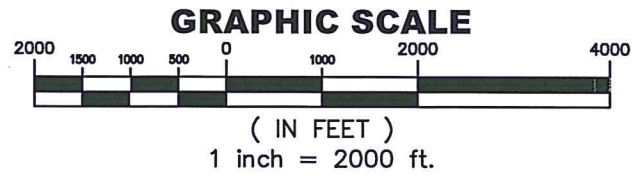
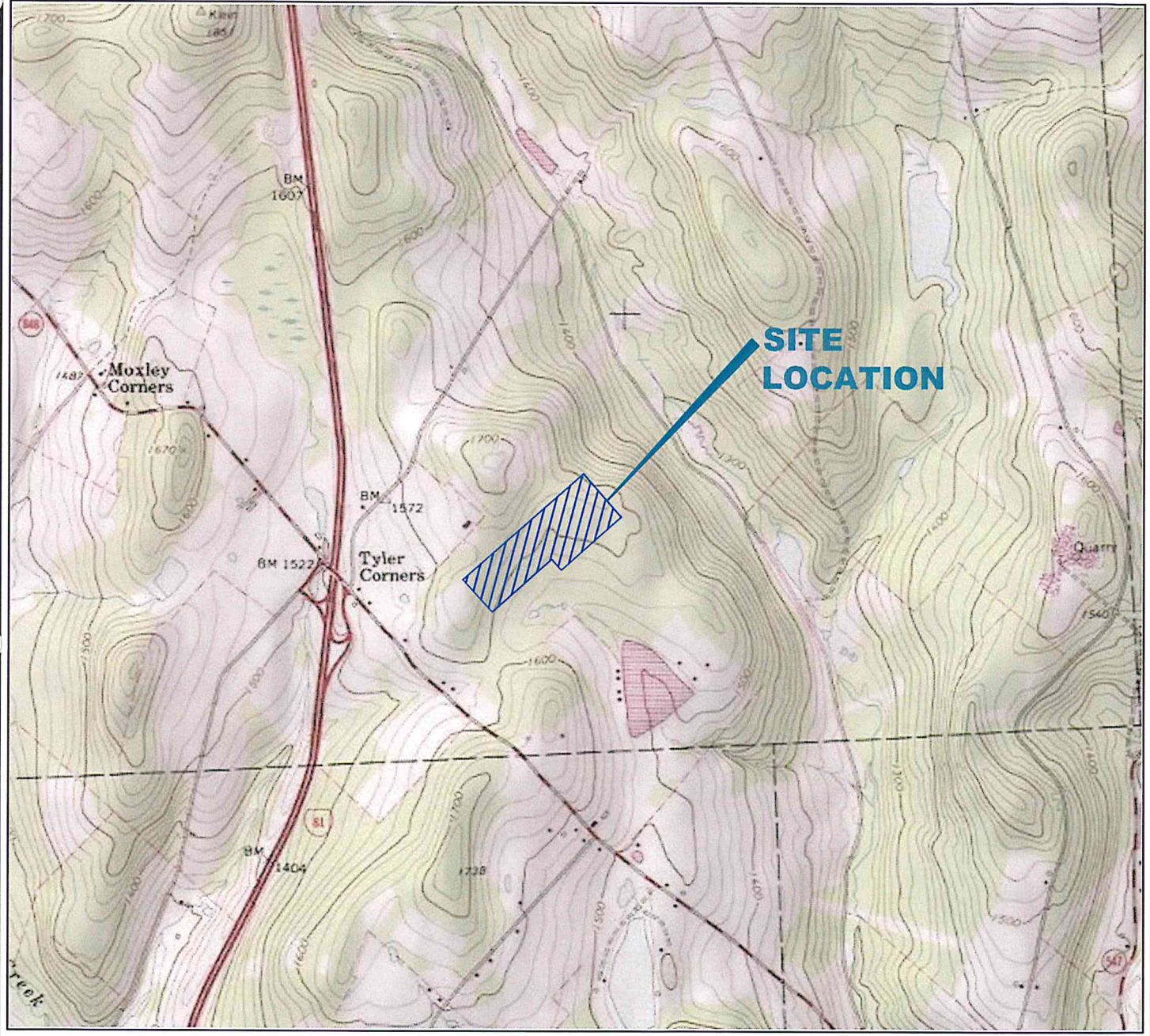
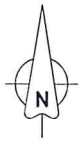
**Exhibit 1**

*USGS Topographic Map*



#0324 - Onsite Sterilization\Tyler Corners Drawings\CPS Drawings\Tyler Corners Topo Map.dwg

# TOPOGRAPHIC MAP TYLER CORNERS, L.P. 20 JENNINGS ROAD NEW MILFORD, PENNSYLVANIA 18834



<b>Source:</b> 41°49'31.63"N, 75°40'10.81"W, Topo Map USGS 7.5 Minute Pennsylvania - Susquehanna County Dated 1978	<b>Scale:</b> As Noted	<b>Approved By:</b> Bradley J. Cunningham, P.E.	<b>Date:</b> 06/03/2016
	<b>Project No:</b> 0324	<b>Drawn By:</b> Rick Gradwell	



**COMPLIANCE PLUS SERVICES, INC.**  
P.O. BOX 186  
HATBORD, PA 19040  
PHONE: (215) 734-1414 \* FAX: (215) 734-1424  
[www.CPS-2Comply.com](http://www.CPS-2Comply.com)

**Drawing No.:**  
**T-01**