

GENERAL NOTES:

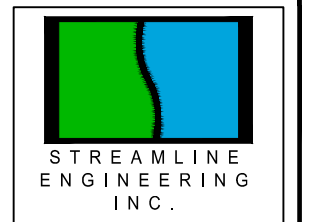
PE SEAL:

REVISIONS:

PROJECT NAME AND LOCATION:
QUAKER VALLEY HIGH SCHOOL FACILITY
 LEET TOWNSHIP, EDGEWORTH AND LEETSDALE BOROUGHS ALLEGHENY COUNTY, PA

DRAWING TITLE:
TEMPORARY CHANNEL PROFILES

CLIENT:
 QUAKER VALLEY SCHOOL DISTRICT
 100 LEETSDALE INDUSTRIAL DRIVE, SUITE B
 LEETSDALE, PA 15056



110 ALLAN STREET
 LOWER BURRELL, PA 15068
 TELE: (724) 594-0326
 FAX: (724) 594-0328

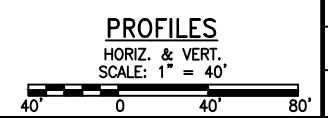
ISSUE DATE: 6-10-2026

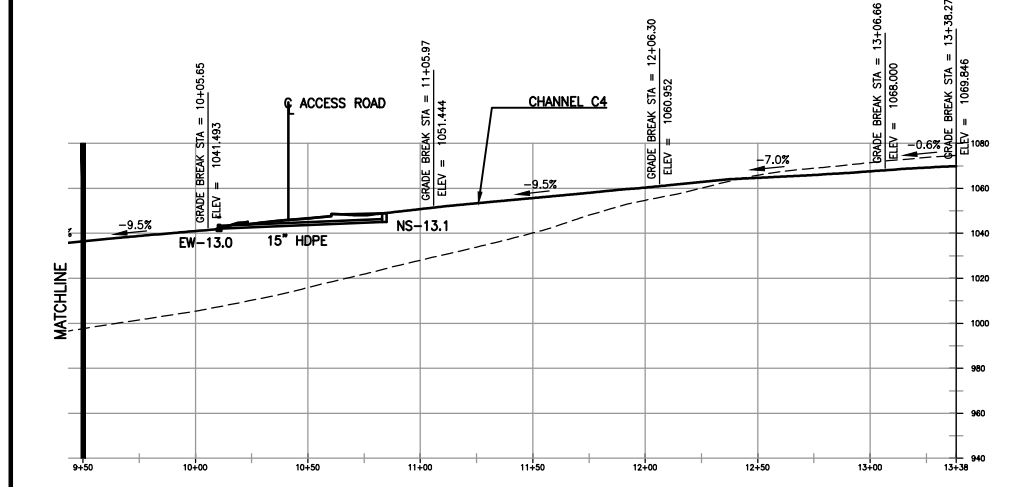
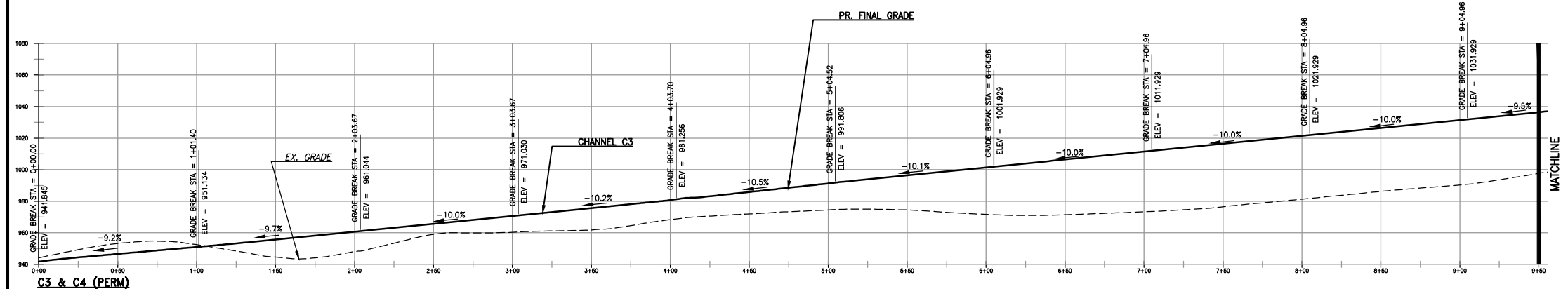
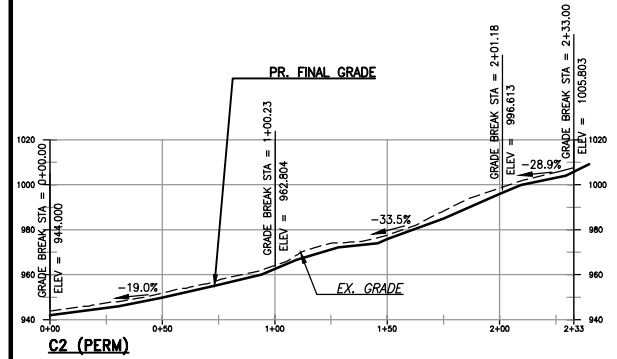
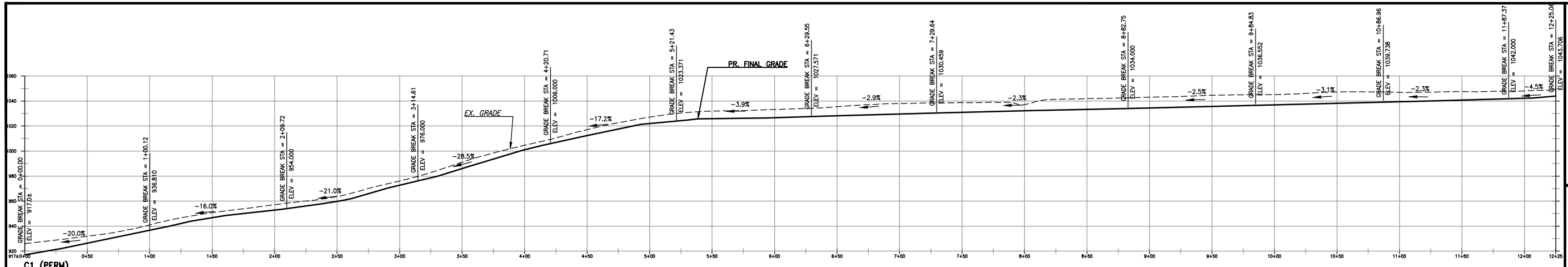
PROJECT NUMBER: 21-109

DRAWING NUMBER: C123

SCALE: AS SHOWN

DRAWN BY: LDA CHECKED BY: KLF





GENERAL NOTES:

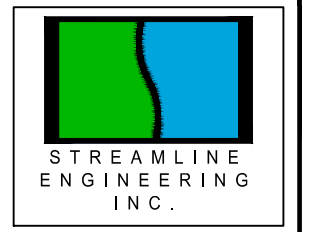
PE SEAL:

REVISIONS:

PROJECT NAME AND LOCATION:
QUAKER VALLEY HIGH SCHOOL FACILITY
 LEET TOWNSHIP, EDGEWORTH AND LEETSDALE BOROUGHS ALLEGHENY COUNTY, PA

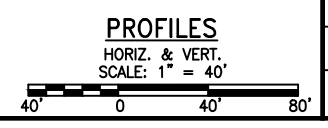
DRAWING TITLE:
PERMANENT CHANNEL PROFILES

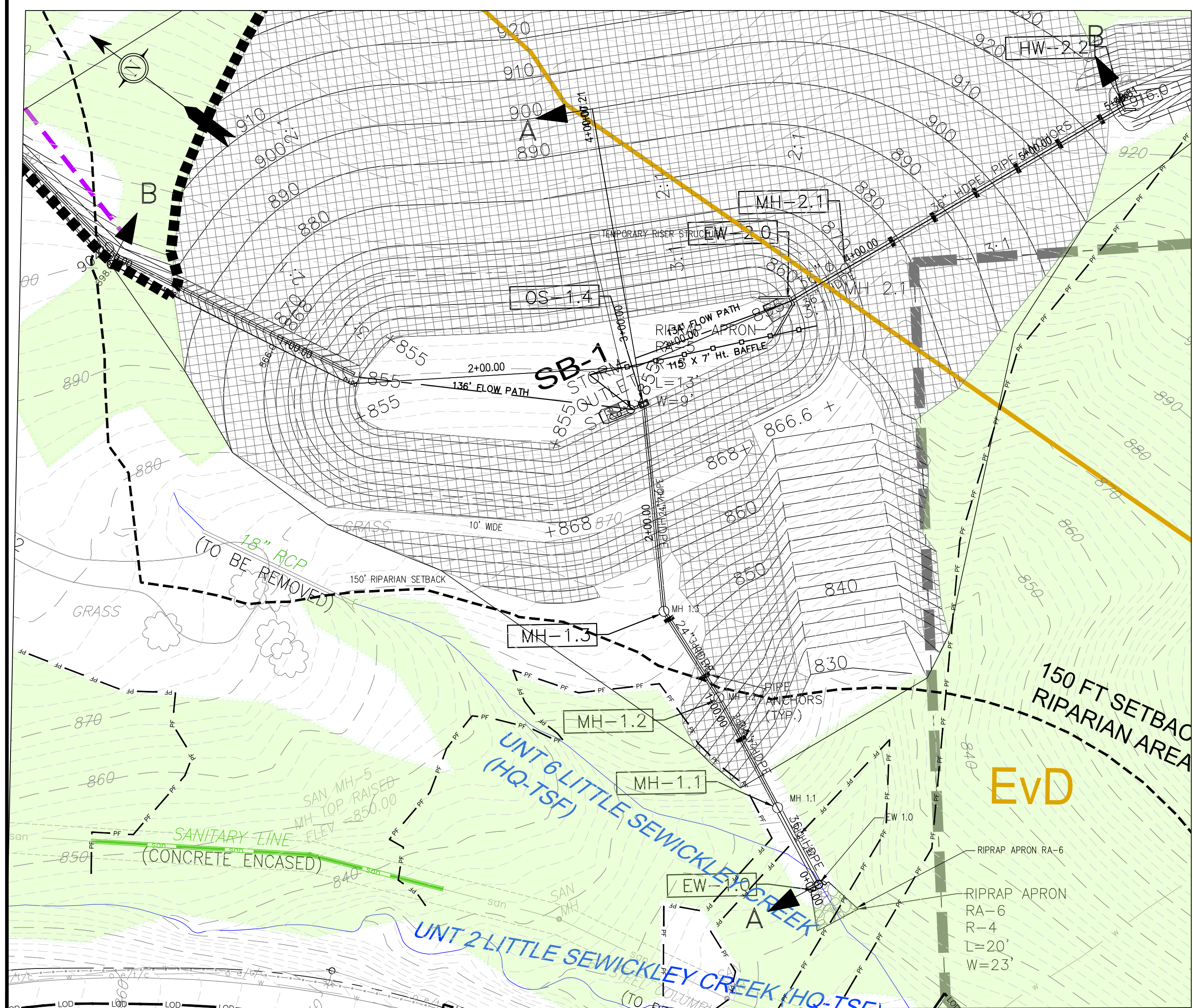
CLIENT:
 QUAKER VALLEY SCHOOL DISTRICT
 100 LEETSDALE INDUSTRIAL DRIVE, SUITE B
 LEETSDALE, PA 15056



110 ALLAN STREET
 LOWER BURRELL, PA 15068
 TELE: (724) 594-0326
 FAX: (724) 594-0328

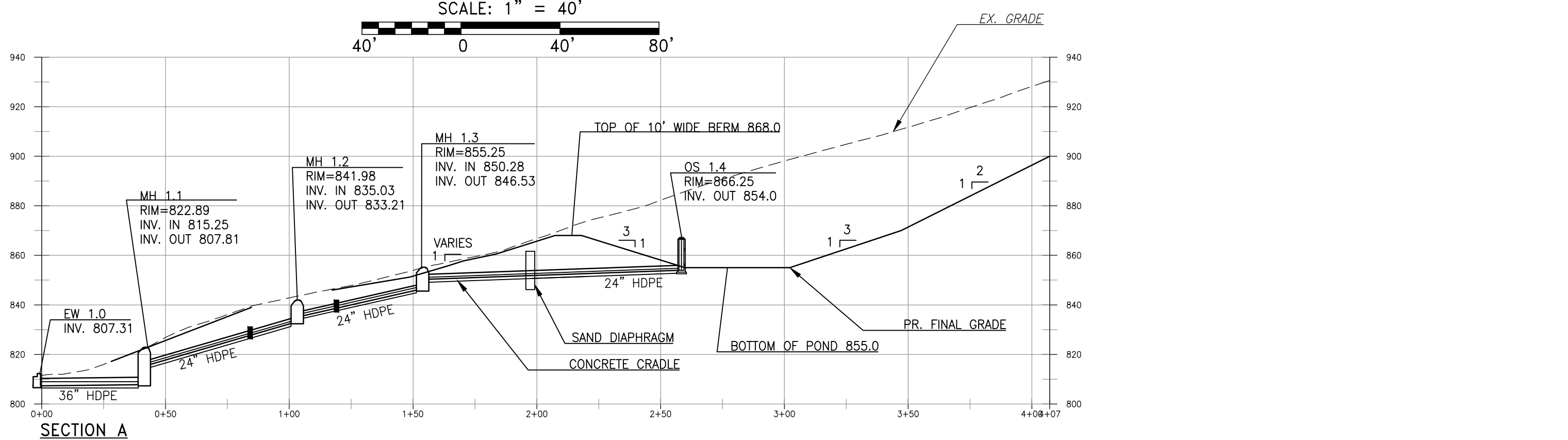
ISSUE DATE:	6-10-2026
PROJECT NUMBER:	21-109
DRAWING NUMBER:	C124
SCALE:	AS SHOWN
DRAWN BY:	LDA
CHECKED BY:	KLF



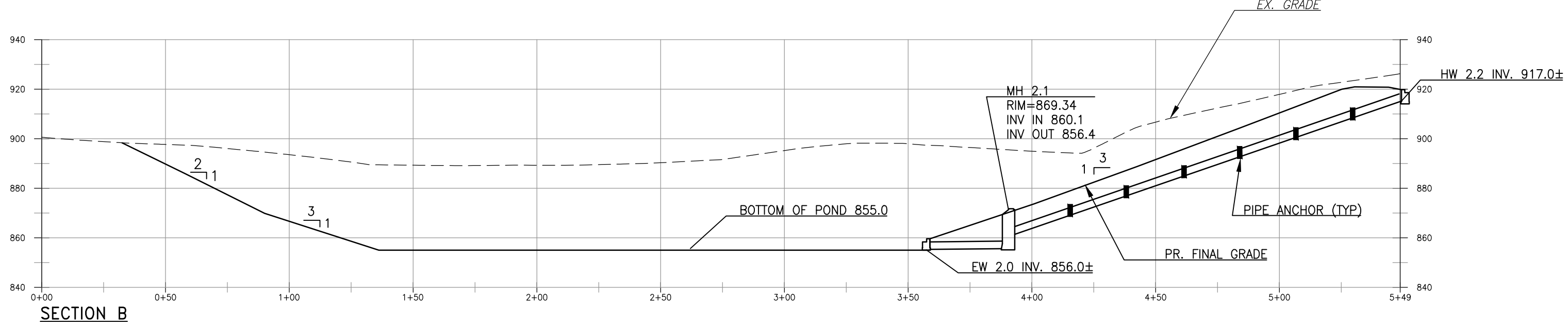


**SEDIMENT BASIN 1
PLAN VIEW**

SCALE: 1" = 40'

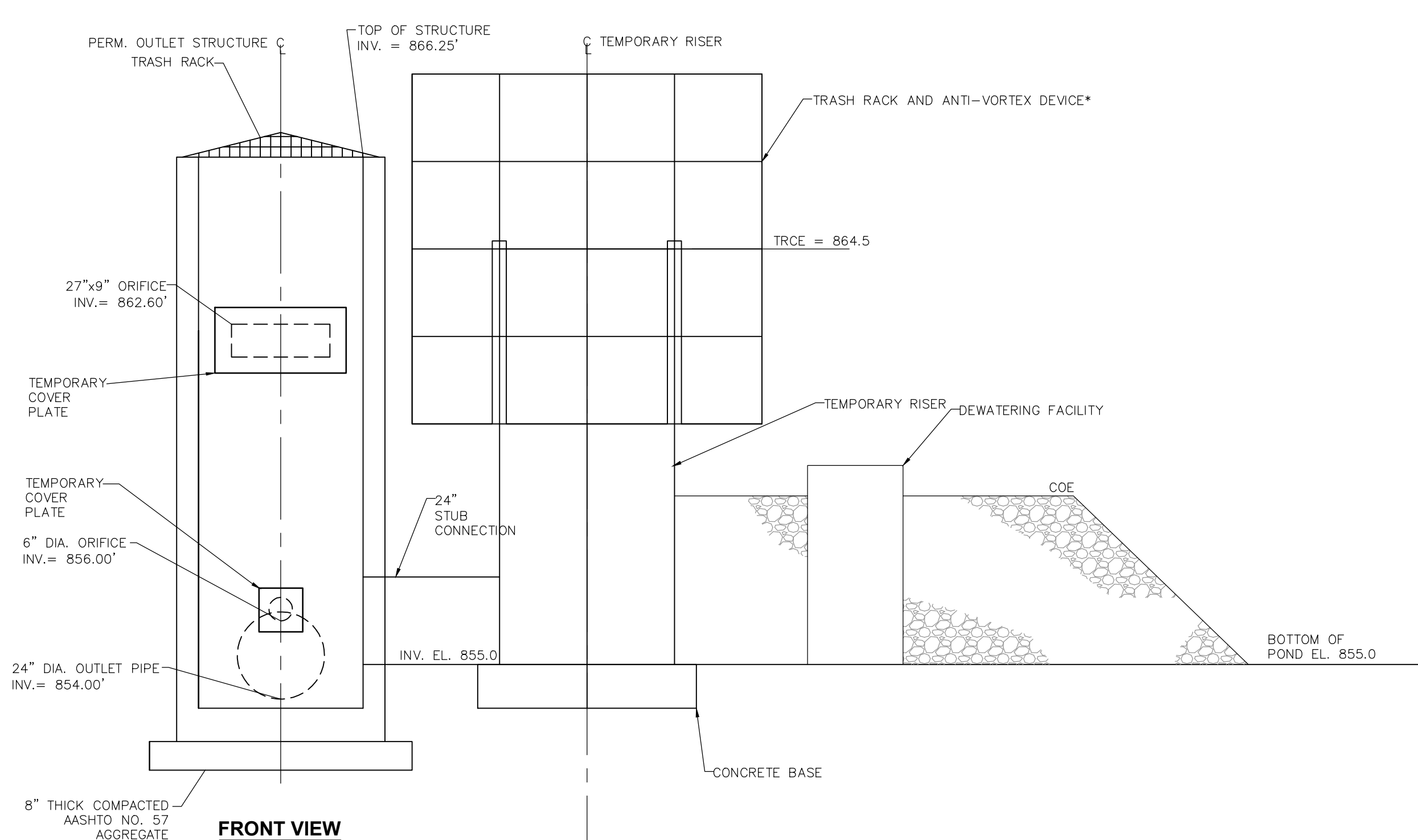


SECTION A

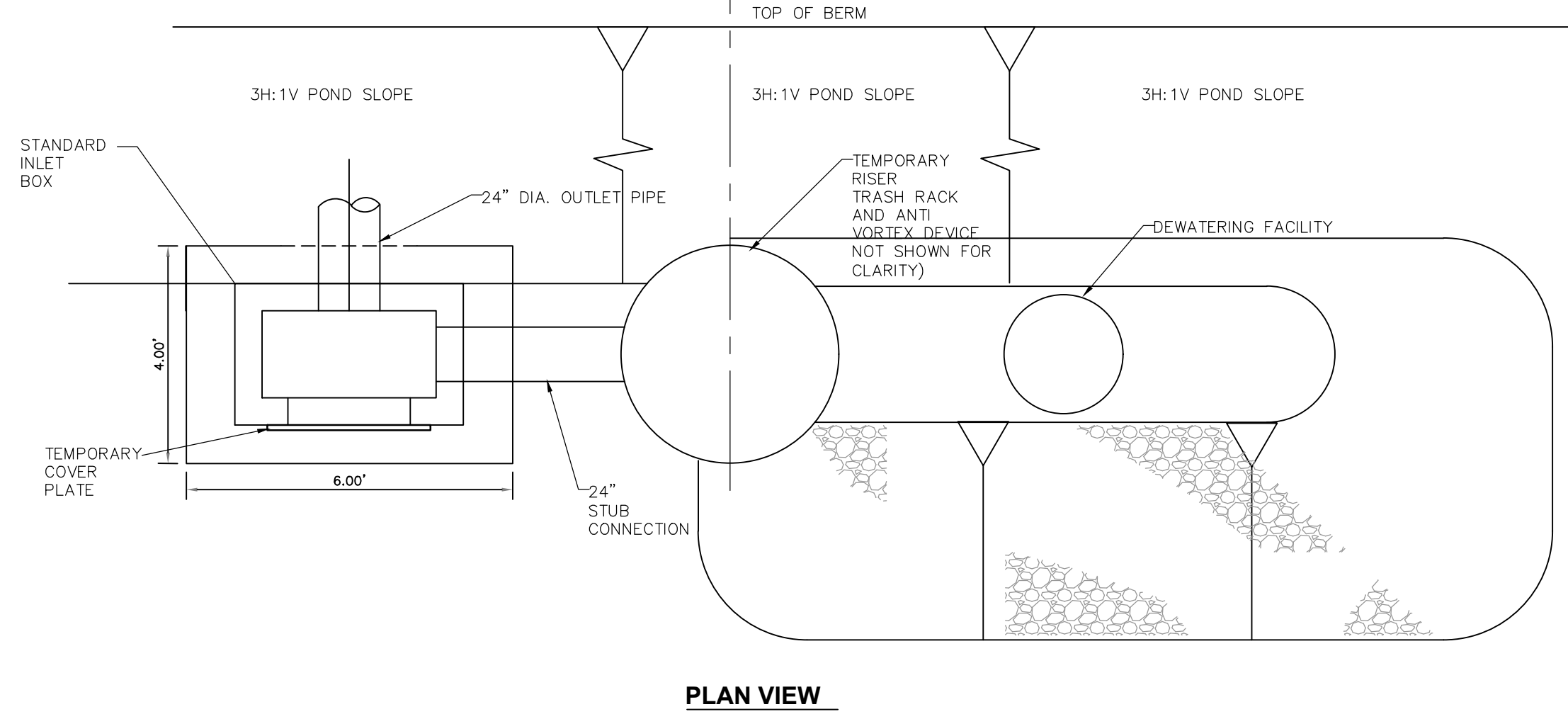


SECTION B

HORIZ. & VERT.
SCALE: 1" = 40'



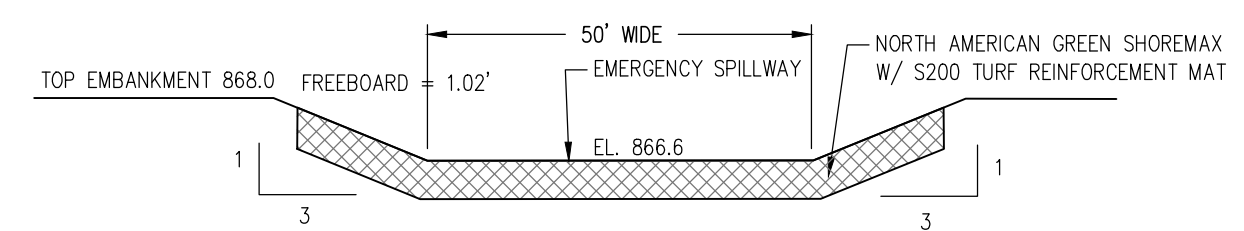
FRONT VIEW



PLAN VIEW

TEMPORARY RISER STRUCTURE ASSEMBLY

NOT TO SCALE



EMERGENCY SPILLWAY

NOT TO SCALE

GENERAL NOTES:
 1. FIELD SURVEY OF PROPERTY BOUNDARY, UTILITIES, EASEMENTS, RIGHTS OF WAYS, PHYSICAL STRUCTURES, ETC. BY DENNIS DULL, LAND SURVEYING, 120 KLINE AVE., N. VERSAILLES, PA 15137.
 2. AERIAL TOPOGRAPHIC MAPPING DATED 4-20-22, BY THE THRASHER GROUP, INC., 600 WHITE OAK BLVD., P.O. BOX 940, BRIDGEPORT, WV. 26330.
 3. PROPOSED SITE PLAN BY BSHM ARCHITECTS, INC., 15 CENTRAL SQUARE, SUITE 300, YOUNGSTOWN, OH 44503 AND BOHLIN CYWINSKI JACKSON, 611 WILLIAM PENN PLACE, SUITE 1300, PITTSBURGH, PA 15219.
 4. SITE IS LOCATED OUTSIDE OF THE 500-YEAR FLOODPLAIN AS SHOWN ON THE FIRM, PANEL NO 42003C0154H, DATED 9-26-2014.

PE SEAL:



REVISIONS:

PROJECT NAME AND LOCATION:

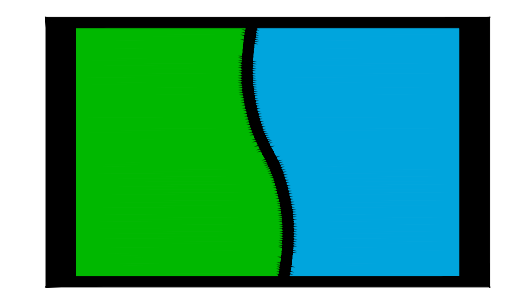
QUAKER VALLEY HIGH SCHOOL FACILITY
 LEET TOWNSHIP, EDGEWORTH AND LEETSDALE BOROUGH ALLEGHENY COUNTY, PA

DRAWING TITLE:

SED POND PLAN AND PROFILE

CLIENT:

QUAKER VALLEY SCHOOL DISTRICT
 100 LEETSDALE INDUSTRIAL DRIVE, SUITE B
 LEETSDALE, PA 15056



STREAMLINE ENGINEERING INC.

110 ALLAN STREET
 LOWER BURRELL, PA 15068
 TELE: (724) 594-0326
 FAX: (724) 594-0328

ISSUE DATE: 6-10-2026

PROJECT NUMBER: 21-109

DRAWING NUMBER: ESCSB1

SCALE: AS SHOWN

DRAWN BY: MLF CHECKED BY: KLF

