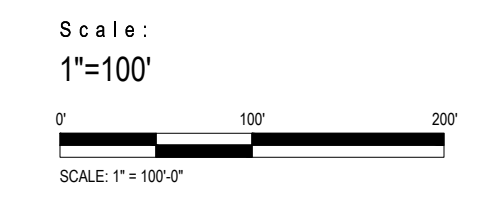


LEGEND

- Large Shade Tree, See Planting Schedule
- Promenade Tree - Medium Shade Tree, See Planting Schedule
- Medium/Small Shade Tree, See Planting Schedule
- Evergreen Tree, See Planting Schedule
- Ornamental Tree, See Planting Schedule
- Grass and Perennial Planting, See Planting Schedule
- Slope/Meadow Planting, See Planting Schedule
- Bioretention Planting, See Planting Schedule
- Stormwater Management Facility, See Planting Schedule
- Reforestations, See Planting Schedule
- Seeded Lawn, See Planting Schedule

Notes:

1. Final Tree locations to be coordinated with Lighting Locations



PADEP RESPONSE TO COMMENTS - 06/19/2026



**QUAKER VALLEY SCHOOL DISTRICT
NEW QUAKER VALLEY HIGH SCHOOL
LEETSDALE, PA 15056**

Commission	21017
Client	JH
Sheet Title	Landscape Plan

Revisions	Description	Revision Date

Cast Number	
Date	June 19, 2026



**Bohlin
Cywinski
Jackson**



**QUAKER VALLEY SCHOOL DISTRICT
NEW QUAKER VALLEY HIGH SCHOOL
LEETSDALE, PA 15056**

PADEP RESPONSE TO COMMENTS - 06/19/2026

PLANTING SCHEDULE - TREES

KEY	QNTY	BOTANICAL NAME	COMMON NAME	SIZE	COMMENTS
SHADE TREES					
AC RU	78	Acer rubrum 'Red Sunset'	Red Sunset Red Maple	3"-3.5" Cal.	B&B
CA SP	7	Catalpa Speciosa	Northern Catalpa	3"-3.5" Cal.	B&B
BE PO	11	Betula populifolia 'Whitespire'	Whitespire Birch	12"-14" Ht.	B&B
LI ST	40	Liquidambar styraciflua	Sweetgum	3"-3.5" Cal.	B&B
LI TU	17	Liriodendron tulipifera	Tulip Tree	3"-3.5" Cal.	B&B
NY SA	13	Nyssa sylvatica	Black Gum	3"-3.5" Cal.	B&B
PL AC	4	Planatus acerifolia 'Exclamation'	Exclamation London Planetree	3"-3.5" Cal.	B&B
QU AL	7	Quercus Alba	White Oak	3"-3.5" Cal.	B&B
TI CO	35	Tilia cordata 'Greenspire'	Greenspire Little Leaf Linden	3"-3.5" Cal.	B&B
UL AM	29	Ulmus a. 'Princeton'	Princeton American Elm	3"-3.5" Cal.	B&B
EVERGREEN TREE					
PI AB	25	Picea abies	Norway Spruce	12"-14" Ht.	B&B
PI ST	20	Pinus strobus	Eastern White Pine	12"-14" Ht.	B&B
ORNAMENTAL TREE					
CE CA	46	Cercis canadensis	Eastern Red Bud	2.5"-3"	B&B
CR VI	43	Crataegus viridis 'Winter King'	Winter King Hawthorn	2.5"-3"	B&B
MA VI	18	Magnolia virginiana	Sweetbay Magnolia	2.5"-3"	B&B

PLANTING SCHEDULE - SHRUBS

KEY	QNTY	BOTANICAL NAME	COMMON NAME	SIZE	COMMENTS
SHRUBS					
Cl al	67	Clethra alnifolia 'Ruby Spice'	Ruby Spice Summersweet	24"-30" Ht.	B&B
Ce am	57	Ceanothus americanus	New Jersey Tea	24"-30" Ht.	B&B
Fo mt	151	Fothergilla 'Mt. Airy'	Mount Airy Fothergilla	24"-30" Ht.	B&B
Ix gl	29	Ilex glabra 'Shamrock'	Red Sprite Winterberry	24"-30" Ht.	B&B
Ix rs	65	Ilex verticillata 'Red Sprite'	Red Sprite Winterberry	24"-30" Ht.	B&B
Ix sg	3	Ilex verticillata 'Southern Gentleman'	Southern Gentleman Winterberry	24"-30" Ht.	B&B
It vi	68	Itea virginica 'Henry Garnett'	Virginia Sweetspire	24"-30" Ht.	B&B
Ha ap	6	Hamamelis 'Arnold Promise'	Arnold Promise Witchhazel	36"-42" Ht.	B&B
Rh ar	41	Rhus aromatica	Gro-Low Sumac	24"-30" Ht.	B&B
Vi de	30	Viburnum dentatum 'Blue Muffin'	Arrowwood Viburnum	30"-36" Ht.	B&B
Vi la	7	Viburnum lantana 'Mohican'	Mohican Viburnum	30"-36" Ht.	B&B
Vi pl	12	Viburnum plicatum 'Mariesii'	Doublefile Viburnum	30"-36" Ht.	B&B

PLANTING SCHEDULE - GRASSES AND PERENNIALS

KEY	QNTY	BOTANICAL NAME	COMMON NAME	SIZE	COMMENTS
GRASSES AND PERENNIALS					
an ge	31	Andropogon gerardii	Big bluestem	1 Gal.	
am hu	436	Amsonia hubrichtii	Bluestar	1 Gal.	
ba au	296	Baptisia australis	Blue False Indigo	1 Gal.	
ca ac	1216	Calamagrostis 'Karl Forester'	Feather Reed Grass	1 Gal.	
de ce	304	Deschampsia cespitosa 'Goldtau'	Tufted Hairgrass	1 Gal.	
ec pu	486	Echinacea purpurea	Purple Coneflower	1 Gal.	
eu du	80	Eutrochium dubium 'Little Joe'	Little Joe Joepyee Weed	1 Gal.	
pa vi	1022	Panicum virgatum 'Shenandoah'	Red Switchgrass	1 Gal.	
sc sc	437	Schizachyrium scoparium	Little Bluestem	1 Gal.	
sp he	800	Sporobolus heterolepis	Prairie Dropseed	1 Gal.	

PLANTING SCHEDULE - REFORESTATION

KEY	QNTY	BOTANICAL NAME	COMMON NAME	SIZE	COMMENTS
SHRUBS, GRASSES AND PERENNIALS					
☼	Min. 10000 Trees	Acer rubrum	Red Maple	1/2" Whip	
		Carya spp.	Hickory	1/2" Whip	
		Celtis occidentalis	Hackberry	1/2" Whip	
		Fagus grandifolia	American Beech	1/2" Whip	
		Liriodendron tulipifera	Yellow Poplar	1/2" Whip	
		Nyssa sylvatica	Black Gum	1/2" Whip	
		Quercus alba	White oak	1/2" Whip	
		Quercus palustris	Pin Oak	1/2" Whip	
		Quercus rubra	Red Oak	1/2" Whip	
		Sassafras albidum	Sassafras	1/2" Whip	
		Tilia americana	Basswood	1/2" Whip	
		☼	430,358 SF	ERNMX-140 - Partially Shaded Area Roadside Mix	

PLANTING SCHEDULE - SLOPE/MEADOW PLANTING

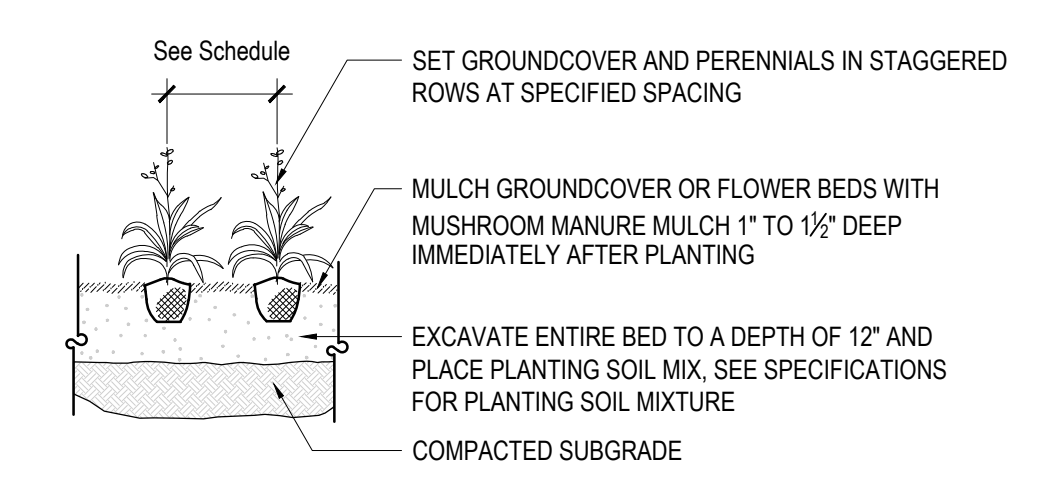
KEY	QNTY	TYPE
SEED MIX		
☼	302,900	ERNMX-181 - Native Steep Slope Mix w/Annual Ryegrass
<p>Mix Composition:</p> <p>29.0% Andropogon gerardii, 'Bison' (Big Bluestem, 'Bison')</p> <p>20.0% Lolium multiflorum (Annual Ryegrass)</p> <p>15.5% Sorghastrum nutans, 'Nebraska 54' (Indiangrass, 'Nebraska 54')</p> <p>13.4% Elymus virginicus, Madison-NY Ecotype (Virginia Wildrye, Madison-NY Ecotype)</p> <p>6.6% Elymus canadensis (Canada Wildrye)</p> <p>4.0% Agrostis perennans, Albany Pine Bush-NY Ecotype (Autumn Bentgrass, Albany Pine Bush-NY Ecotype)</p> <p>2.8% Panicum virgatum, 'Habitat'-NJ Ecotype (Switchgrass, NJ Ecotype)</p> <p>2.8% Panicum clandestinum, Tioga (Deertongue, Tioga)</p> <p>1.2% Tridens flavus, Fort Indiantown Gap-PA Ecotype (Purpletop, Fort Indiantown Gap-PA Ecotype)</p> <p>1.0% Rudbeckia hirta (Blackeyed Susan)</p> <p>1.0% Chamaecrista fasciculata, PA Ecotype (Partridge Pea, PA Ecotype)</p> <p>0.7% Echinacea purpurea (Purple Coneflower)</p> <p>0.7% Coreopsis lanceolata (Lanceleaf Coreopsis)</p> <p>0.6% Helioopsis helianthoides, PA Ecotype (Oxeye Sunflower, PA Ecotype)</p> <p>0.3% Aster pilosus, PA Ecotype (Heath Aster, PA Ecotype)</p> <p>0.2% Monarda fistulosa, Fort Indiantown Gap-PA Ecotype (Wild Bergamot, Fort Indiantown Gap-PA Ecotype)</p> <p>0.1% Asclepias syriaca, PA Ecotype (Common Milkweed, PA Ecotype)</p> <p>0.1% Apocynum cannabinum, PA Ecotype (Indianhemp, PA Ecotype)</p> <p>0.5% Baptisia australis, Southern WV Ecotype (Blue False Indigo, Southern WV Ecotype)</p> <p>0.5% Aster novae-angliae (New England Aster)</p> <p>0.3% Monarda fistulosa, Fort Indiantown Gap-PA Ecotype (Wild Bergamot, Fort Indiantown Gap-PA Ecotype)</p> <p>0.2% Solidago nemoralis, PA Ecotype (Gray Goldenrod, PA Ecotype)</p> <p>0.2% Aster lateriflorus (Calico Aster)</p> <p>0.1% Solidago juncea, PA Ecotype (Early Goldenrod, PA Ecotype)</p> <p>0.1% Mimulus ringens, PA Ecotype (Square Stemmed Monkeyflower, PA Ecotype)</p> <p>0.1% Eupatorium perfoliatum, PA Ecotype (Boneset, PA Ecotype)</p> <p>0.1% Aster pilosus, PA Ecotype (Heath Aster, PA Ecotype)</p>		

PLANTING SCHEDULE - RIPARIAN ZONE

QNTY	BOTANICAL NAME	COMMON NAME	SIZE	COMMENTS
Trees				
120	Acer rubrum	Red Maple	#3/5 Gal.	4' Minimum Ht.
50	Carya ovata	Hackberry	#3/5 Gal.	4' Minimum Ht.
50	Carya ovata	Hackberry	#3/5 Gal.	4' Minimum Ht.
65	Fagus grandifolia	American Beech	#3/5 Gal.	4' Minimum Ht.
50	Liriodendron tulipifera	Tulip Tree	#3/5 Gal.	4' Minimum Ht.
25	Platanus occidentalis	Sycamore	#3/5 Gal.	4' Minimum Ht.
75	Quercus alba	Swamp White Oak	#3/5 Gal.	4' Minimum Ht.
SHRUBS				
40	Clethra alnifolia	Summersweet	#2/3 Gal.	3' Minimum Ht.
35	Lindera benzoin	Common Spice bush	#2/3 Gal.	3' Minimum Ht.
35	Morella pensylvanica	Northern Bayberry	#2/3 Gal.	3' Minimum Ht.
32	Ohysocarpus opulifolius	Ninebark	#2/3 Gal.	3' Minimum Ht.
50	Viburnum dentatum	Arrow wood Viburnum	#2/3 Gal.	3' Minimum Ht.
RIPARIAN SEED MIX				
☼	87,250	ERNMX-178 -Riparian Buffer Mix		
<p>Mix Composition:</p> <p>20.00 % Elymus virginicus, Madison-NY Ecotype Virginia Wildrye, Madison-NY Ecotype</p> <p>19.50 % Sorghastrum nutans, NY4 Ecotype Indiangrass, NY4 Ecotype</p> <p>19.00 % Andropogon gerardii, 'Bison' Big Bluestem, 'Bison'</p> <p>15.20 % Panicum clandestinum, Tioga Deertongue, Tioga</p> <p>9.00 % Panicum virgatum, 'Habitat'-NJ Ecotype Switchgrass, 'Habitat'-NJ Ecotype</p> <p>3.60 % Verbena hastata, PA Ecotype Blue Vervain, PA Ecotype</p> <p>3.00 % Rudbeckia hirta Blackeyed Susan</p> <p>2.50 % Asclepias incarnata, PA Ecotype Swamp Milkweed, PA Ecotype</p> <p>2.20 % Aster pilosus, PA Ecotype Heath Aster, PA Ecotype</p> <p>2.00 % Helioopsis helianthoides, PA Ecotype Oxeye Sunflower, PA Ecotype</p> <p>1.30 % Zizia aurea, PA Ecotype Golden Alexanders, PA Ecotype</p> <p>0.90 % Eupatorium perfoliatum, PA Ecotype Boneset, PA Ecotype</p> <p>0.80 % Pycnanthemum tenuifolium Narrowleaf Mountainmint</p> <p>0.40 % Aster umbellatus, PA Ecotype Flat Topped White Aster, PA Ecotype</p> <p>0.40 % Monarda fistulosa, Fort Indiantown Gap-PA Ecotype Wild Bergamot, Fort Indiantown Gap-PA Ecotype</p> <p>0.20 % Solidago rugosa, PA Ecotype Wrinkleleaf Goldenrod, PA Ecotype</p>				

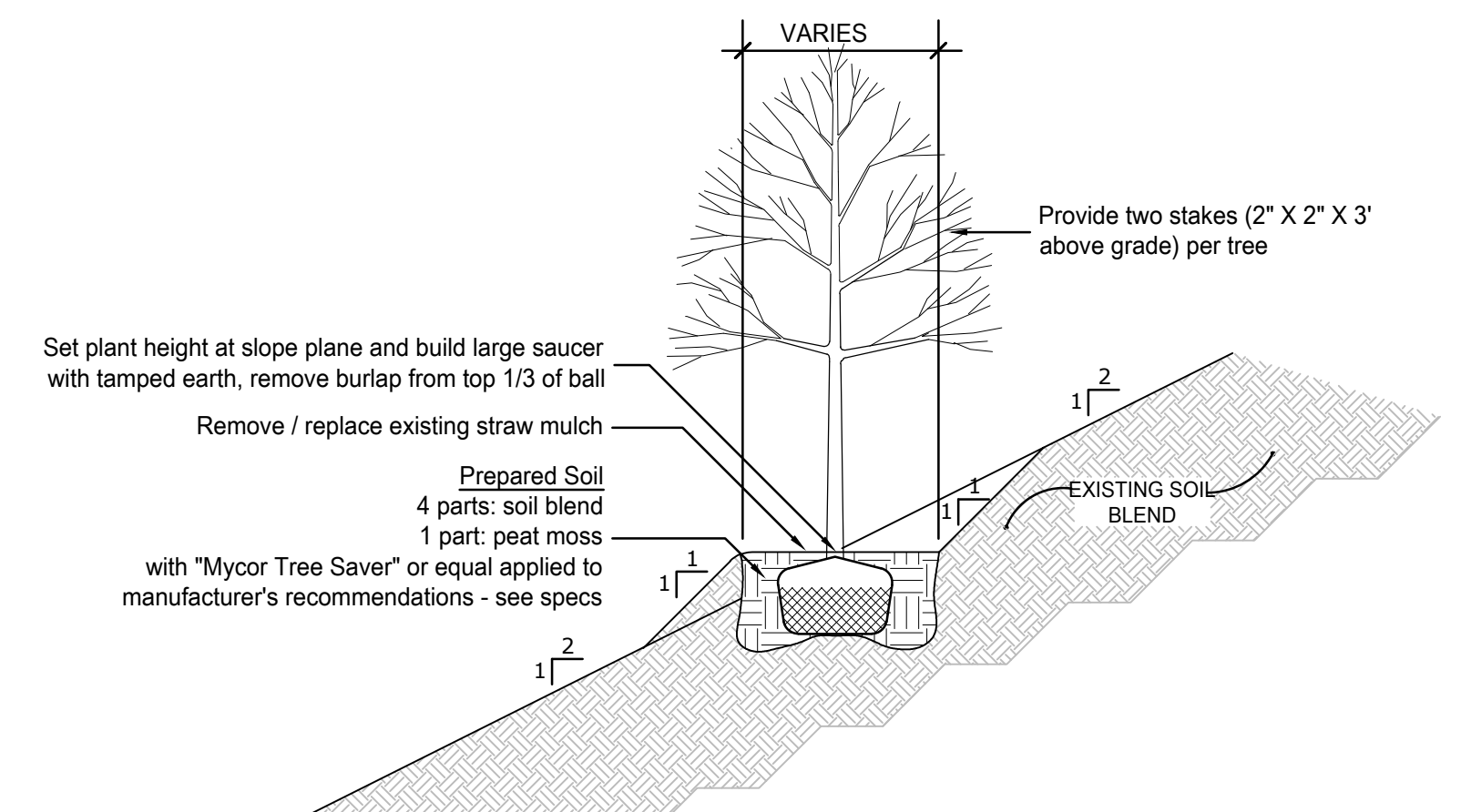
PLANTING SCHEDULE - SEEDED LAWN

KEY	QNTY	TYPE
SEED MIX		
☼	415,785 SF	Pennington Pennsylvania State Grass Seed Mix

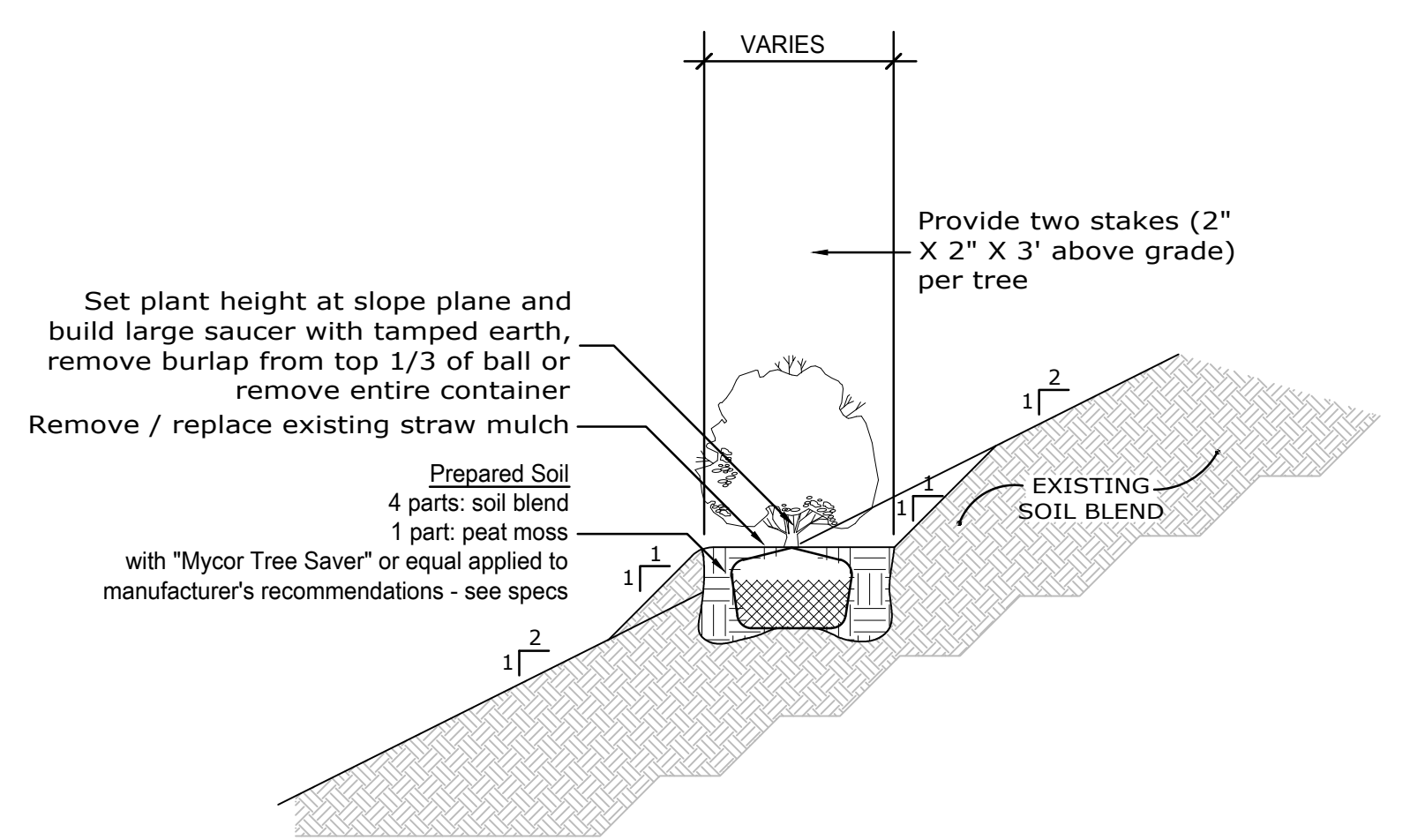


NOTE:
1. ALL CONTAINER GROWN GROUND COVER AND PERENNIAL PLANTS SHALL BE HEALTHY, VIGOROUS, WELL ROOTED AND ESTABLISHED IN THE CONTAINER IN WHICH THEY ARE GROWING. A CONTAINER GROWN GROUND COVER AND PERENNIAL PLANT SHALL HAVE A WELL-ESTABLISHED ROOT SYSTEM REACHING THE SIDES OF THE CONTAINER TO MAINTAIN A FIRM ROOT BALL. CONTAINER SHALL BE RIGID ENOUGH TO HOLD BALL SHAPE AND PROTECT ROOT MASS DURING SHIPPING AND SIZED ACCORDING TO ANSI Z60.1-1996 FOR KIND, TYPE AND SIZE OF PLANT REQUIRED.

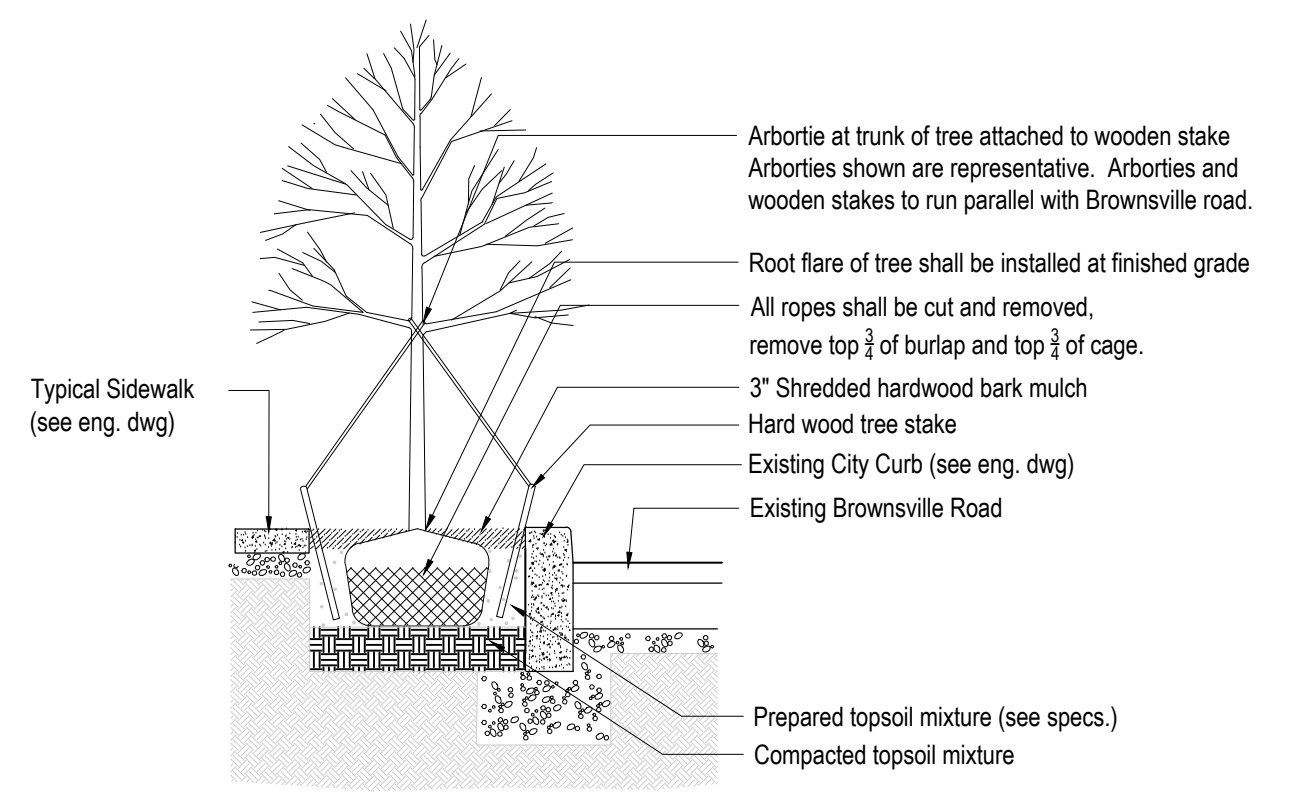
3 TYPICAL PERENNIAL/GROUND COVER PLANTING
NOT TO SCALE



4 DECIDUOUS TREE ON SLOPE
NOT TO SCALE

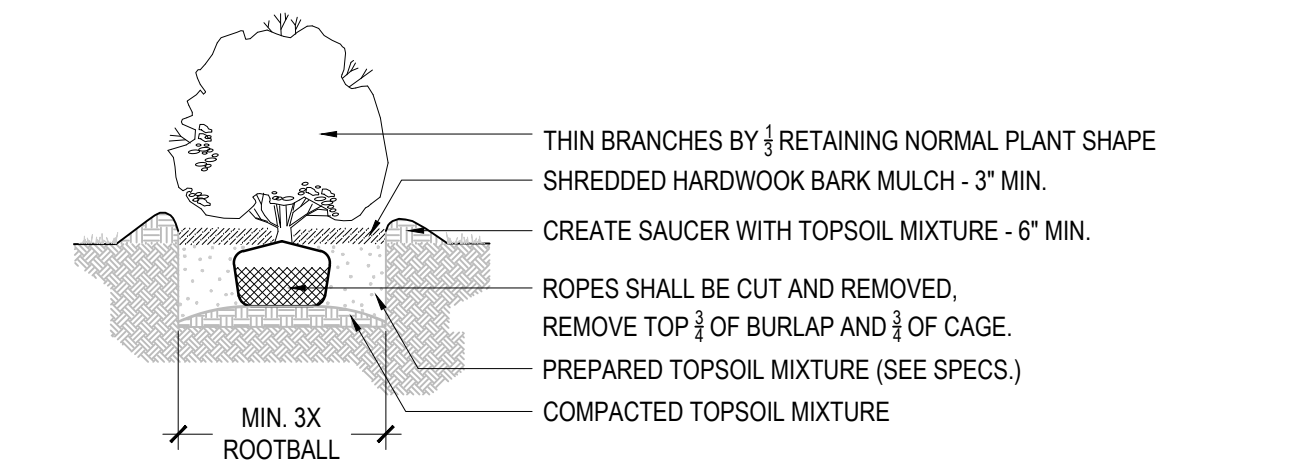


5 SHRUB PLANTING ON SLOPE
NOT TO SCALE



Note:
1. Plants dug with firm, natural balls of earth in which they are grown, with ball size not less than the diameter and depth recommended by ANSI Z60.1-1996 for type and size of tree or shrub required; wrapped, tied, rigidly supported, and drum-laced as recommended by ANSI Z60.1-1996.

1 TYPICAL DECIDUOUS TREE PLANTING
NOT TO SCALE



NOTE:
1. BALLED AND BURLAPPED PLANTS DUG WITH FIRM, NATURAL BALLS OF EARTH IN WHICH THEY ARE GROWN, WITH BALL SIZE NOT LESS THAN THE DIAMETER AND DEPTH RECOMMENDED BY ANSI Z60.1-1996 FOR TYPE AND SIZE OF TREE OR SHRUB REQUIRED; WRAPPED, TIED, RIGIDLY SUPPORTED, AND DRUM-LACED AS RECOMMENDED BY ANSI Z60.1-1996.
2. ALL CONTAINER GROWN PLANTS SHALL BE HEALTHY, VIGOROUS, WELL ROOTED, AND ESTABLISHED IN THE CONTAINER IN WHICH THEY ARE GROWING. A CONTAINER GROWN PLANT SHALL HAVE A WELL-ESTABLISHED ROOT SYSTEM REACHING THE SIDES OF THE CONTAINER TO MAINTAIN A FIRM ROOT BALL. CONTAINER SHALL BE RIGID ENOUGH TO HOLD BALL SHAPE AND PROTECT ROOT MASS DURING SHIPPING AND BE SIZED ACCORDING TO ANSI Z60.1-1996 FOR KIND, TYPE, AND SIZE OF PLANT REQUIRED.

2 TYPICAL SHRUB PLANTING
NOT TO SCALE

Notes:

- All plants shall be furnished and installed in strict accordance with the latest version of "American Standard for Nursery Stock", ANSI Z60.1, as published and approved by the American Association of Nurserymen, and Section 808 of the latest version of PennDOT Form 408 specs.
- Balled and burlapped plants shall be dug with firm, natural balls of which they are grown, with ball size not less than diameter and depth recommended by ANSI Z60.1 for type and size of tree or shrub required; wrapped, tied, rigidly supported, and drum-laced as recommended by ANSI Z60.1.
- Container-grown plants shall be healthy, vigorous, well-rooted, and established in the container in which they are grown. A container-grown plant shall have a well-established root system reaching the sides of the container to maintain a firm root ball. Container shall be rigid enough to hold ball shape and protect root mass during shipping and be sized according to ANSI Z60.1 for kind, type, and size of plant required.
- All plants to be staked in the field by Contractor for approval of Landscape Architect prior to planting installation.
- Contractor shall install all plant materials in locations and to depths as shown on plan or on details. See specifications for planting mix.
- Topsoil shall be supplied by the Contractor. Topsoil must be tested according to specifications prior to its use. Topsoil test results and amendment recommendations shall be provided by the Contractor to the Landscape Architect prior to installation. See plans, details, and specifications for topsoil depths.
- All shrub beds shall be mulched with three 3" inches of double-shredded processed hardwood bark; all ground cover and perennial beds shall be mulched with 1-1/2" mushroom manure, as per Section 805 of the latest version of PennDOT Form 408 specifications.
- All plant material shall be guaranteed by Contractor for a period of one calendar year after written notice of acceptance of all planting work.



**Bohlin
Cywinski
Jackson**



**QUAKER VALLEY SCHOOL DISTRICT
NEW QUAKER VALLEY HIGH SCHOOL
LEETSDALE, PA 15056**

PADEP RESPONSE TO COMMENTS - 06/19/2026

Commission	21017
Drawn	JH
ML	JH
Sheet Title	Landscape Plan

Revisions	#	Description	Revision Date
-----------	---	-------------	---------------

June 19, 2026

BIORETENTION BASIN NO.3 - PLANTING SCHEDULE - TREES

KEY	QNTY	BOTANICAL NAME	COMMON NAME	SIZE	COMMENTS
SHADE TREES					
BE PO	1	Betula populifolia 'Whitespire'	Whitespire Birch	12'-14' Ht.	B&B
NY SA	1	Nyssa sylvatica	Black Gum	3'-3.5' Cal.	B&B
PL AC	2	Planatus acerifolia 'Exclamation'	Exclamation London Planetree	3'-3.5' Cal.	B&B
TI CO	1	Tilia cordata 'Greenspire'	Greenspire Little Leaf Linden	3'-3.5' Cal.	B&B
ORNAMENTAL TREE					
CE CA	3	Cercis canadensis	Eastern Red Bud	2.5'-3"	B&B

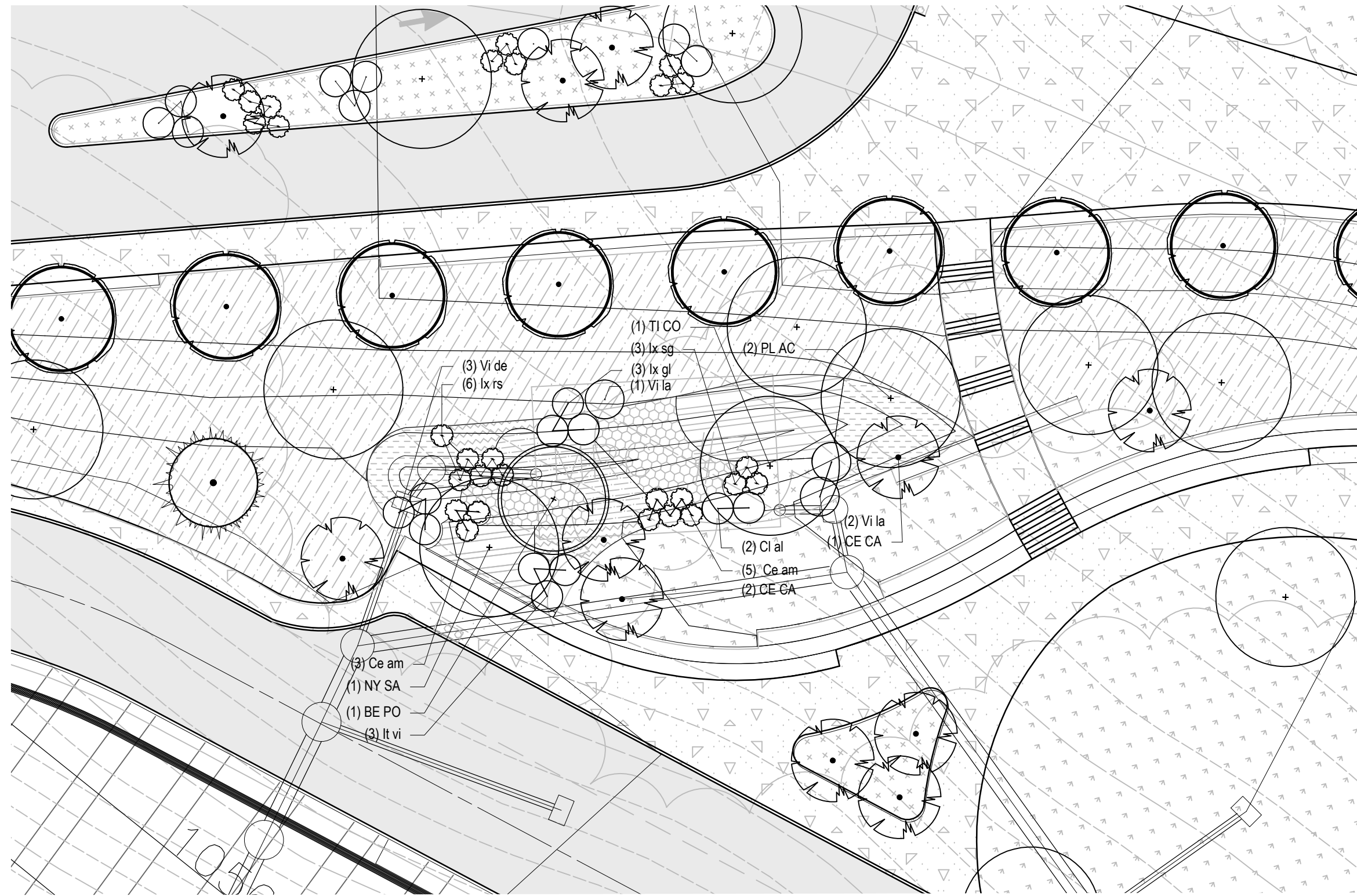
BIORETENTION BASIN NO.3 - PLANTING SCHEDULE - SHRUBS

KEY	QNTY	BOTANICAL NAME	COMMON NAME	SIZE	COMMENTS
SHRUBS					
CI al	2	Clethra alnifolia 'Ruby Spice'	Ruby Spice Summersweet	24"-30" Ht.	B&B
Ce am	8	Ceanothus americanus	New Jersey Tea	24"-30" Ht.	B&B
Ix gl	3	Ilex glabra 'Shamrock'	Red Sprite Winterberry	24"-30" Ht.	B&B
Ix rs	6	Ilex verticillata 'Red Sprite'	Red Sprite Winterberry	24"-30" Ht.	B&B
Ix sg	3	Ilex verticillata 'Southern Gentleman'	Southern Gentleman Winterberry	24"-30" Ht.	B&B
It vi	3	Itea virginica 'Henry Garnett'	Virginia Sweetspire	24"-30" Ht.	B&B
Vi de	3	Viburnum dentatum 'Blue Muffin'	Arrowwood Viburnum	30"-36" Ht.	B&B
Vi la	3	Viburnum lantana 'Mohican'	Mohican Viburnum	30"-36" Ht.	B&B

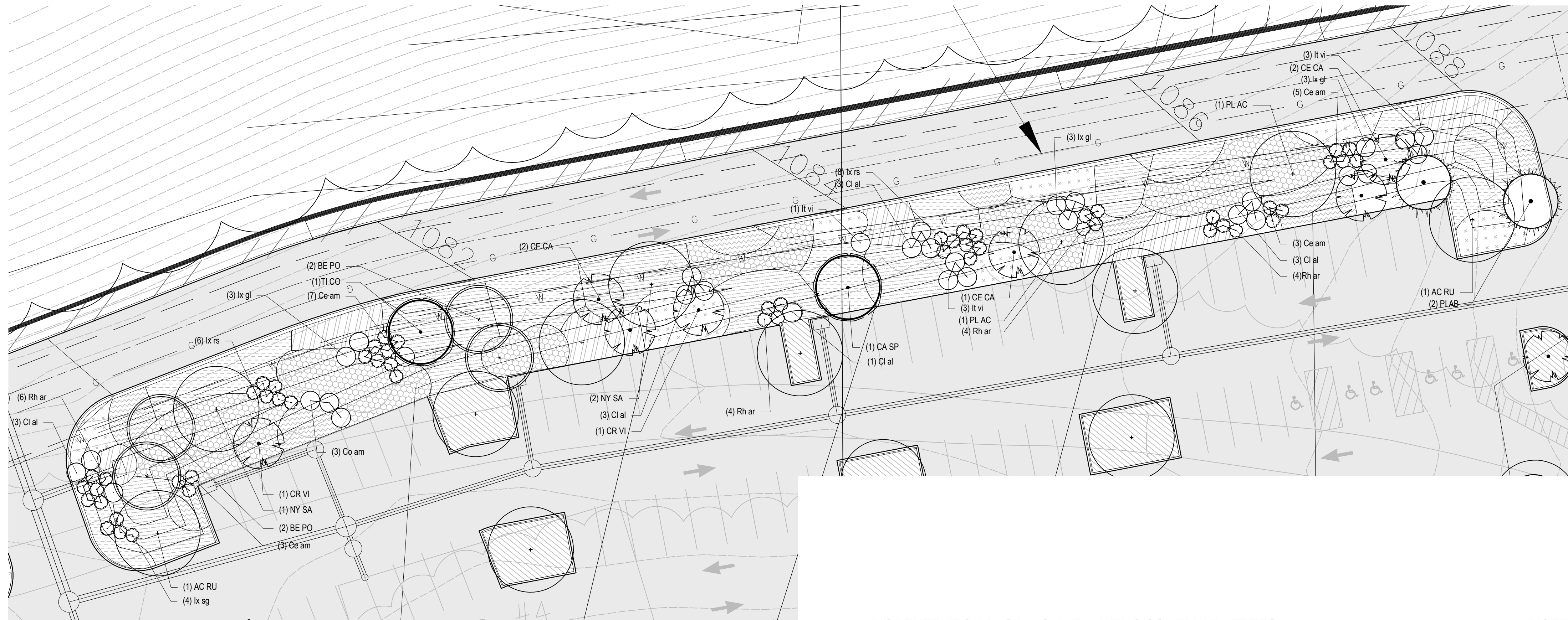
Note: All planting material to be field located by Landscape Architect

BIORETENTION BASIN NO.3 -- BIORETENTION PLUG MIXES

KEY	QNTY	BOTANICAL NAME	COMMON NAME	SIZE	SPACING
BIORETENTION MIX TYPES					
BIORETENTION MIX #1					
45		Carex vulpinoidea	Fox Sedge	3"-5" Plugs	18" O.C.
18		Eupatorium dubium 'Little Joe'	Little Joe Joe Pye Weed	3"-5" Plugs	18" O.C.
30		Inis versicolor	Blueflag	3"-5" Plugs	18" O.C.
60		Panicum amarum 'Dewey Blue'	Bitter Panicgrass	3"-5" Plugs	18" O.C.
15		Schizachyrium scoparium	Little Blue Stem	3"-5" Plugs	18" O.C.
BIORETENTION MIX #2					
25		Chasmanthium latifolium	River oats	3"-5" Plugs	18" O.C.
12		Echinacea purpurea	Purple Coneflower	3"-5" Plugs	18" O.C.
12		Rudbeckia fulgida	Orange Coneflower	3"-5" Plugs	18" O.C.
18		Panicum virgatum	Switchgrass	3"-5" Plugs	18" O.C.
30		Schizachyrium scoparium	Little Blue Stem	3"-5" Plugs	18" O.C.
BIORETENTION MIX #3					
25		Aster novi-belgii	New York Aster	3"-5" Plugs	18" O.C.
35		Asclepias tuberosa	Butterfly Weed	3"-5" Plugs	18" O.C.
15		Coreopsis verticillata	Whorled Tickseed	3"-5" Plugs	18" O.C.
95		Dechampsia cespitosa	Tufted Hairgrass	3"-5" Plugs	18" O.C.
20		Monarda didyma 'Jacob Kline'	Scarlet Bee Balm	3"-5" Plugs	18" O.C.
BIORETENTION MIX #4					
65		Andropogon glomeratus	Bushy Bluestem	3"-5" Plugs	18" O.C.
28		Aster novae-angliae	New England Aster	3"-5" Plugs	18" O.C.
25		Heliosais helianthoides	Smooth Oxeye	3"-5" Plugs	18" O.C.
42		Pycnanthemum muticum	Clustered Mountain Mint	3"-5" Plugs	18" O.C.
80		Schizachyrium scoparium	Little Blue Stem	3"-5" Plugs	18" O.C.
BIORETENTION MIX #5					
7		Asclepias incarnata	Swamp Milkweed	3"-5" Plugs	18" O.C.
15		Baptisia australis	Winter King Hawthorn	3"-5" Plugs	18" O.C.
21		Carex emoryi	Emory's Sedge	3"-5" Plugs	18" O.C.
15		Panicum rigidulum	Red panicgrass	3"-5" Plugs	18" O.C.
7		Vernonia noveboracensi	New York Ironweed	3"-5" Plugs	18" O.C.
BIORETENTION MIX #6					
12		Carex stricta	Upright Sedge	3"-5" Plugs	18" O.C.
5		Liatris spicata	Dense Blazing Star	3"-5" Plugs	18" O.C.
7		Panicum virgatum'Northwind'	Winter King Hawthorn	3"-5" Plugs	18" O.C.
5		Penstemon digitalis	Foxglove Beardtongue	3"-5" Plugs	18" O.C.
7		Schizachyrium scoparium	Little Blue Stem	3"-5" Plugs	18" O.C.



BIORETENTION BASIN NO.3 -- LANDSCAPE PLAN
1" = 20'-0"





BIORETENTION BASIN NO.5 - PLANTING SCHEDULE - TREES

KEY	QNTY	BOTANICAL NAME	COMMON NAME	SIZE	COMMENTS
SHADE TREES					
BE PO	5	Betula populifolia 'Whitespire'	Whitespire Birch	12'-14' Ht.	B&B
NY SA	3	Nyssa sylvatica	Black Gum	3'-3.5' Cal.	B&B
PL AC	1	Platanus acerifolia 'Exclamation'	Exclamation London Planetree	3'-3.5' Cal.	B&B
TI CO	2	Tilia cordata 'Greenspire'	Greenspire Little Leaf Linden	3'-3.5' Cal.	B&B
EVERGREEN TREE					
PI AB	2	Picea abies	Norway Spruce	12'-14' Ht.	B&B
ORNAMENTAL TREE					
CE CA	3	Cercis canadensis	Eastern Red Bud	2.5'-3'	B&B
MA VI	1	Magnolia virginiana	Sweetbay Magnolia	2.5'-3'	B&B

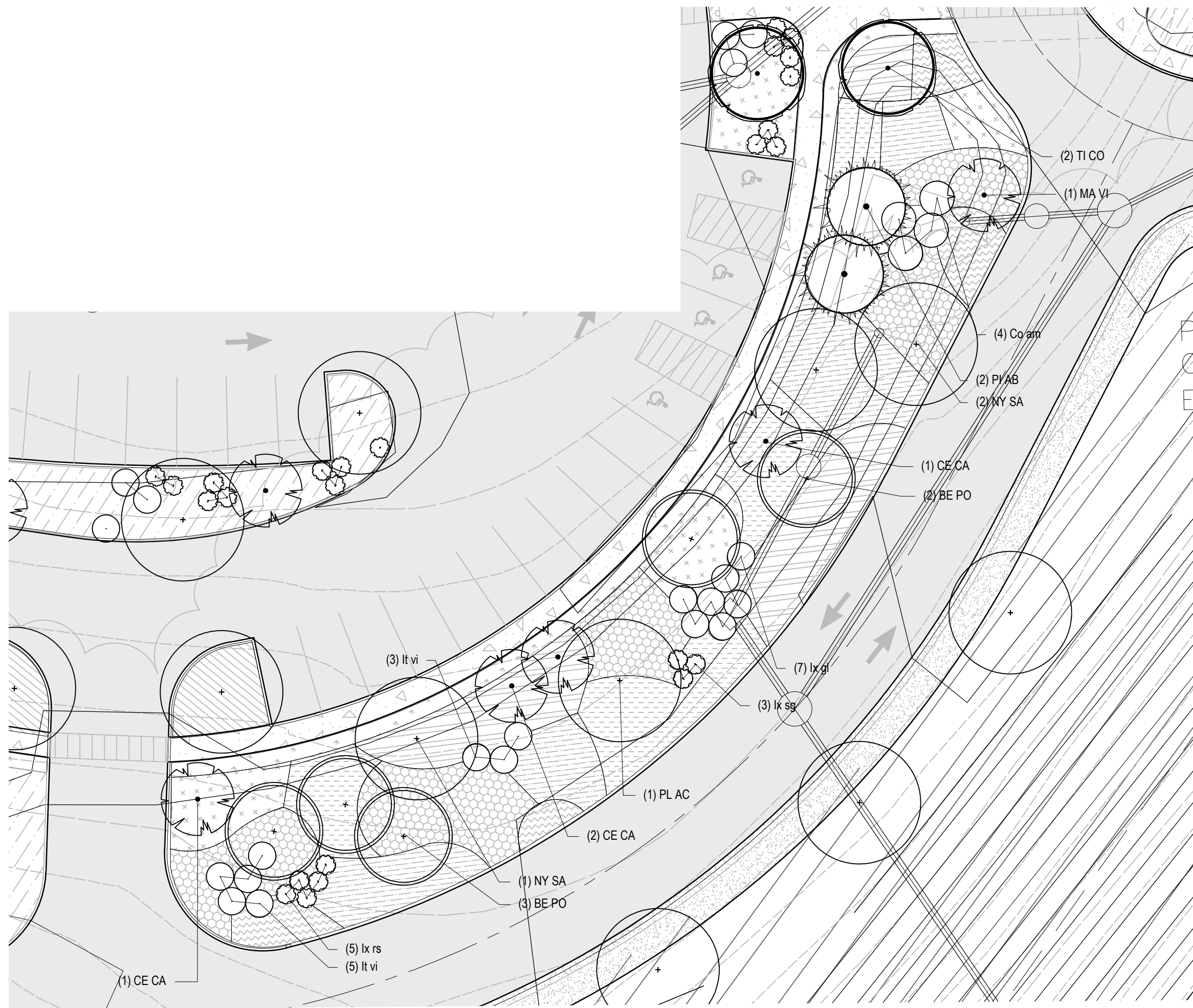
BIORETENTION BASIN NO.5 - PLANTING SCHEDULE - SHRUBS

KEY	QNTY	BOTANICAL NAME	COMMON NAME	SIZE	COMMENTS
SHRUBS					
Co am	4	Cornus amomum	Silky Dogwood	24"-30" Ht.	B&B
Ix gl	7	Ilex glabra 'Shamrock'	Red Sprite Winterberry	24"-30" Ht.	B&B
Ix rs	5	Ilex verticillata 'Red Sprite'	Red Sprite Winterberry	24"-30" Ht.	B&B
Ix sg	3	Ilex verticillata 'Southern Gentleman'	Southern Gentleman Winterberry	24"-30" Ht.	B&B
It vi	8	Itea virginica 'Henry Garnett'	Virginia Sweetspire	24"-30" Ht.	B&B

Note: All planting material to be field located by Landscape Architect

BIORETENTION BASIN NO. 5 -- BIORETENTION PLUG MIXES

KEY	QNTY	BOTANICAL NAME	COMMON NAME	SIZE	SPACING
BIORETENTION MIX TYPES					
BIORETENTION MIX #1					
245		Carex vulpinoidea	Fox Sedge	3"-5" Plugs	18" O.C.
95		Eupatorium dubium 'Little Joe'	Little Joe Joe Pye Weed	3"-5" Plugs	18" O.C.
135		Iris versicolor	Blueflag	3"-5" Plugs	18" O.C.
275		Panicum amarum 'Dewey Blue'	Bitter Panicgrass	3"-5" Plugs	18" O.C.
60		Schizachyrium scoparium	Little Blue Stem	3"-5" Plugs	18" O.C.
BIORETENTION MIX #2					
205		Chasmanthium latifolium	River oats	3"-5" Plugs	18" O.C.
95		Echinacea purpurea	Purple Coneflower	3"-5" Plugs	18" O.C.
75		Rudbeckia fulgida	Orange Coneflower	3"-5" Plugs	18" O.C.
75		Panicum virgatum	Switchgrass	3"-5" Plugs	18" O.C.
145		Schizachyrium scoparium	Little Blue Stem	3"-5" Plugs	18" O.C.
BIORETENTION MIX #3					
90		Aster novi-belgii	New York Aster	3"-5" Plugs	18" O.C.
130		Asclepias tuberosa	Butterfly Weed	3"-5" Plugs	18" O.C.
65		Coreopsis verticillata	Whorled Tickseed	3"-5" Plugs	18" O.C.
225		Dechampsia cespitosa	Tufted Hairgrass	3"-5" Plugs	18" O.C.
100		Monarda didyma 'Jacob Kline'	Scarlet Bee Balm	3"-5" Plugs	18" O.C.
BIORETENTION MIX #4					
185		Andropogon glomeratus	Bushy Bluestem	3"-5" Plugs	18" O.C.
75		Aster novae-angliae	New England Aster	3"-5" Plugs	18" O.C.
65		Helopsis helianthoides	Smooth Oxeye	3"-5" Plugs	18" O.C.
100		Pycnanthemum multicum	Clustered Mountain Mint	3"-5" Plugs	18" O.C.
225		Schizachyrium scoparium	Little Blue Stem	3"-5" Plugs	18" O.C.
BIORETENTION MIX #5					
30		Asclepias incarnata	Swamp Milkweed	3"-5" Plugs	18" O.C.
50		Baptisia australis	Winter King Hawthorn	3"-5" Plugs	18" O.C.
100		Carex emoryi	Emory's Sedge	3"-5" Plugs	18" O.C.
70		Panicum rigidulum	Red panicgrass	3"-5" Plugs	18" O.C.
40		Vernonia noveboracensis	New York Ironweed	3"-5" Plugs	18" O.C.
BIORETENTION MIX #6					
125		Carex stricta	Upright Sedge	3"-5" Plugs	18" O.C.
45		Liatris spicata	Dense Blazing Star	3"-5" Plugs	18" O.C.
75		Panicum virgatum 'Northwind'	Winter King Hawthorn	3"-5" Plugs	18" O.C.
45		Penstemon digitalis	Foxglove Beardtongue	3"-5" Plugs	18" O.C.
65		Schizachyrium scoparium	Little Blue Stem	3"-5" Plugs	18" O.C.



BIORETENTION BASIN NO.5 -- LANDSCAPE PLAN
1" = 20'-0"

BIORETENTION BASIN NO.6 - PLANTING SCHEDULE - TREES

KEY	QNTY	BOTANICAL NAME	COMMON NAME	SIZE	COMMENTS
SHADE TREES					
AC RU	2	Acer rubrum 'Red Sunset'	Red Sunset Red Maple	3'-3.5' Cal.	B&B
TI CO	8	Tilia cordata 'Greenspire'	Greenspire Little Leaf Linden	3'-3.5' Cal.	B&B
ORNAMENTAL TREE					
CE CA	1	Cercis canadensis	Eastern Red Bud	2.5'-3'	B&B
MA VI	2	Magnolia virginiana	Sweetbay Magnolia	2.5'-3'	B&B

BIORETENTION BASIN NO.6 - PLANTING SCHEDULE - SHRUBS

KEY	QNTY	BOTANICAL NAME	COMMON NAME	SIZE	COMMENTS
SHRUBS					
Cl al	3	Clethra alnifolia 'Ruby Spice'	Ruby Spice Summersweet	24"-30" Ht.	B&B
Ce am	14	Ceanothus americanus	New Jersey Tea	24"-30" Ht.	B&B
Co am	3	Cornus amomum	Silky Dogwood	24"-30" Ht.	B&B
Fo mt	3	Fothergilla 'Mt. Airy'	Mount Airy Fothergilla	24"-30" Ht.	B&B
Ix rs	11	Ilex verticillata 'Red Sprite'	Red Sprite Winterberry	24"-30" Ht.	B&B
Ix sg	4	Ilex verticillata 'Southern Gentleman'	Southern Gentleman Winterberry	24"-30" Ht.	B&B
It vi	3	Itea virginica 'Henry Garnett'	Virginia Sweetspire	24"-30" Ht.	B&B
Vi de	5	Viburnum dentatum 'Blue Muffin'	Arrowwood Viburnum	30"-36" Ht.	B&B
Vi la	6	Viburnum lentiginos 'Mohican'	Mohican Viburnum	30"-36" Ht.	B&B

Note: All planting material to be field located by Landscape Architect

BIORETENTION BASIN NO.6 -- BIORETENTION PLUG MIXES

KEY	QNTY	BOTANICAL NAME	COMMON NAME	SIZE	SPACING
BIORETENTION MIX TYPES					
BIORETENTION MIX #1					
105		Carex vulpinoidea	Fox Sedge	3"-5" Plugs	18" O.C.
40		Eupatorium dubium 'Little Joe'	Little Joe Joe Pye Weed	3"-5" Plugs	18" O.C.
55		Iris versicolor	Blueflag	3"-5" Plugs	18" O.C.
115		Panicum amarum 'Dewey Blue'	Bitter Panicgrass	3"-5" Plugs	18" O.C.
25		Schizachyrium scoparium	Little Blue Stem	3"-5" Plugs	18" O.C.
BIORETENTION MIX #2					
100		Chasmanthium latifolium	River oats	3"-5" Plugs	18" O.C.
48		Echinacea purpurea	Purple Coneflower	3"-5" Plugs	18" O.C.
38		Rudbeckia fulgida	Orange Coneflower	3"-5" Plugs	18" O.C.
38		Panicum virgatum	Switchgrass	3"-5" Plugs	18" O.C.
70		Schizachyrium scoparium	Little Blue Stem	3"-5" Plugs	18" O.C.
BIORETENTION MIX #3					
40		Aster novi-belgii	New York Aster	3"-5" Plugs	18" O.C.
55		Asclepias tuberosa	Butterfly Weed	3"-5" Plugs	18" O.C.
25		Coreopsis verticillata	Whorled Tickseed	3"-5" Plugs	18" O.C.
105		Dechampsia cespitosa	Tufted Hairgrass	3"-5" Plugs	18" O.C.
45		Monarda didyma 'Jacob Kline'	Scarlet Bee Balm	3"-5" Plugs	18" O.C.
BIORETENTION MIX #4					
72		Andropogon glomeratus	Bushy Bluestem	3"-5" Plugs	18" O.C.
25		Aster novae-angliae	New England Aster	3"-5" Plugs	18" O.C.
25		Helopsis helianthoides	Smooth Oxeye	3"-5" Plugs	18" O.C.
40		Pycnanthemum multicum	Clustered Mountain Mint	3"-5" Plugs	18" O.C.
85		Schizachyrium scoparium	Little Blue Stem	3"-5" Plugs	18" O.C.
BIORETENTION MIX #5					
15		Asclepias incarnata	Swamp Milkweed	3"-5" Plugs	18" O.C.
25		Baptisia australis	Winter King Hawthorn	3"-5" Plugs	18" O.C.
50		Carex emoryi	Emory's Sedge	3"-5" Plugs	18" O.C.
35		Panicum rigidulum	Red panicgrass	3"-5" Plugs	18" O.C.
20		Vernonia noveboracensis	New York Ironweed	3"-5" Plugs	18" O.C.
BIORETENTION MIX #6					
115		Carex stricta	Upright Sedge	3"-5" Plugs	18" O.C.
35		Liatris spicata	Dense Blazing Star	3"-5" Plugs	18" O.C.
70		Panicum virgatum 'Northwind'	Winter King Hawthorn	3"-5" Plugs	18" O.C.
35		Penstemon digitalis	Foxglove Beardtongue	3"-5" Plugs	18" O.C.
60		Schizachyrium scoparium	Little Blue Stem	3"-5" Plugs	18" O.C.

