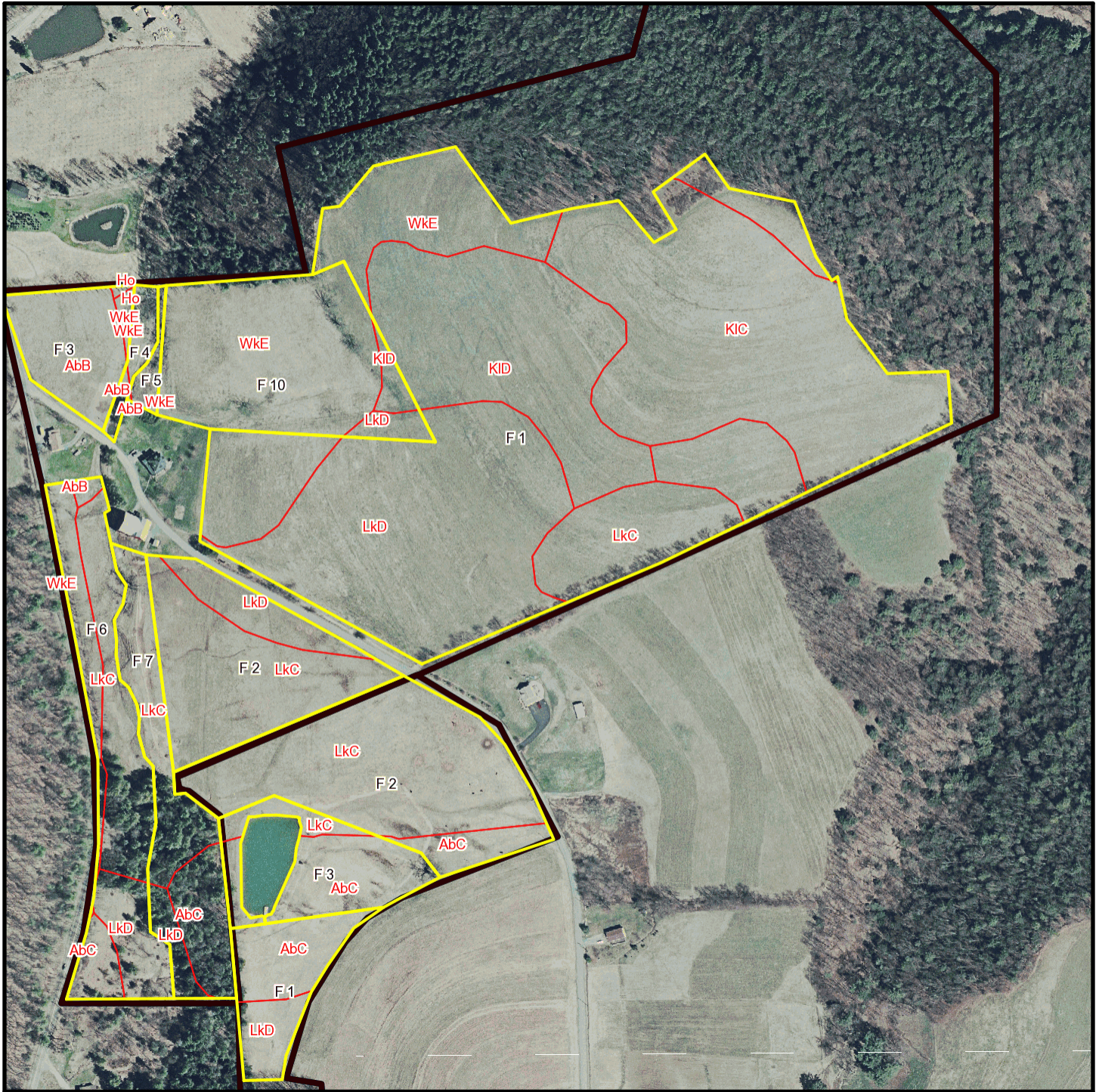
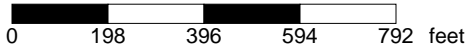


# T 1684 and T 2220 Soil Map



\* 396.0 feet per inch





## Soil Acreages By Field

Field	Label	Musym	Muname	Acres	Drainage Class	Farmland Class	Kfact
F 1	F 1	KIC	Klinesville shaly silt loam, 8 to 15 percent slopes	11.1	Somewhat excessively drained	Not prime farmland	0.28
F 1	F 1	KID	Klinesville shaly silt loam, 15 to 25 percent slopes	6.86	Somewhat excessively drained	Not prime farmland	0.28
F 1	F 1	LkC	Leck kill channery silt loam, 8 to 15 percent slopes	2.52	Well drained	Farmland of statewide importance	0.32
F 1	F 1	LkD	Leck kill channery silt loam, 15 to 25 percent slopes	10.15	Well drained	Not prime farmland	0.32
F 1	F 1	WkE	Weikert and Klinesville shaly silt loams, 25 to 80 percent slopes	14.38	Somewhat excessively drained	Not prime farmland	0.32
F 1	F 1	AbC	Albrights silt loam, 8 to 15 percent slopes	1.38	Moderately well drained	Farmland of statewide importance	0.28
F 10	F 10	KID	Klinesville shaly silt loam, 15 to 25 percent slopes	0.29	Somewhat excessively drained	Not prime farmland	0.28
F 10	F 10	LkD	Leck kill channery silt loam, 15 to 25 percent slopes	0.33	Well drained	Not prime farmland	0.32
F 10	F 10	WkE	Weikert and Klinesville shaly silt loams, 25 to 80 percent slopes	10.96	Somewhat excessively drained	Not prime farmland	0.32
F 2	F 2	LkC	Leck kill channery silt loam, 8 to 15 percent slopes	9.92	Well drained	Farmland of statewide importance	0.32
F 2	F 2	LkD	Leck kill channery silt loam, 15 to 25 percent slopes	1.06	Well drained	Not prime farmland	0.32
F 2	F 2	AbC	Albrights silt loam, 8 to 15 percent slopes	0.72	Moderately well drained	Farmland of statewide importance	0.28
F 3	F 3	AbB	Albrights silt loam, 3 to 8 percent slopes	2	Moderately well drained	All areas are prime farmland	0.37
F 3	F 3	Ho	Holly silt loam	0.03	Very poorly drained	Not prime farmland	0.28
F 3	F 3	WkE	Weikert and Klinesville shaly silt loams, 25 to 80 percent slopes	0.24	Somewhat excessively drained	Not prime farmland	0.32

Field	Label	Musym	Muname	Acres	Drainage Class	Farmland Class	Kfact
F 3	F 3	AbC	Albrights silt loam, 8 to 15 percent slopes	1.98	Moderately well drained	Farmland of statewide importance	0.28
F 3	F 3	LkC	Leck kill channery silt loam, 8 to 15 percent slopes	0.45	Well drained	Farmland of statewide importance	0.32
F 4	F 4	AbB	Albrights silt loam, 3 to 8 percent slopes	0.14	Moderately well drained	All areas are prime farmland	0.37
F 4	F 4	Ho	Holly silt loam	0	Very poorly drained	Not prime farmland	0.28
F 4	F 4	WkE	Weikert and Klinesville shaly silt loams, 25 to 80 percent slopes	0.74	Somewhat excessively drained	Not prime farmland	0.32
F 5	F 5	AbB	Albrights silt loam, 3 to 8 percent slopes	0.01	Moderately well drained	All areas are prime farmland	0.37
F 5	F 5	WkE	Weikert and Klinesville shaly silt loams, 25 to 80 percent slopes	0.56	Somewhat excessively drained	Not prime farmland	0.32
F 6	F 6	AbB	Albrights silt loam, 3 to 8 percent slopes	0.11	Moderately well drained	All areas are prime farmland	0.37
F 6	F 6	AbC	Albrights silt loam, 8 to 15 percent slopes	0.52	Moderately well drained	Farmland of statewide importance	0.28
F 6	F 6	LkC	Leck kill channery silt loam, 8 to 15 percent slopes	2.3	Well drained	Farmland of statewide importance	0.32
F 6	F 6	LkD	Leck kill channery silt loam, 15 to 25 percent slopes	1.08	Well drained	Not prime farmland	0.32
F 6	F 6	WkE	Weikert and Klinesville shaly silt loams, 25 to 80 percent slopes	2.08	Somewhat excessively drained	Not prime farmland	0.32
F 7	F 7	AbC	Albrights silt loam, 8 to 15 percent slopes	1.16	Moderately well drained	Farmland of statewide importance	0.28
F 7	F 7	LkC	Leck kill channery silt loam, 8 to 15 percent slopes	2.06	Well drained	Farmland of statewide importance	0.32
F 7	F 7	LkD	Leck kill channery silt loam, 15 to 25 percent slopes	0.45	Well drained	Not prime farmland	0.32

## Soil Acreages For Farm

---

MUSYM	MUNAME	Drainage Class	Farmland Class	kfact	acres
AbB	Albrights silt loam, 3 to 8 percent slopes	Moderately well drained	All areas are prime farmland	0.37	2.26
AbC	Albrights silt loam, 8 to 15 percent slopes	Moderately well drained	Farmland of statewide importance	0.28	5.76
Ho	Holly silt loam	Very poorly drained	Not prime farmland	0.28	0.03
KIC	Klinesville shaly silt loam, 8 to 15 percent slopes	Somewhat excessively drained	Not prime farmland	0.28	11.1
KID	Klinesville shaly silt loam, 15 to 25 percent slopes	Somewhat excessively drained	Not prime farmland	0.28	7.15
LkC	Leck kill channery silt loam, 8 to 15 percent slopes	Well drained	Farmland of statewide importance	0.32	17.25
LkD	Leck kill channery silt loam, 15 to 25 percent slopes	Well drained	Not prime farmland	0.32	13.07
WkE	Weikert and Klinesville shaly silt loams, 25 to 80 percent slopes	Somewhat excessively drained	Not prime farmland	0.28	14.48
WkE	Weikert and Klinesville shaly silt loams, 25 to 80 percent slopes	Somewhat excessively drained	Not prime farmland	0.32	14.48