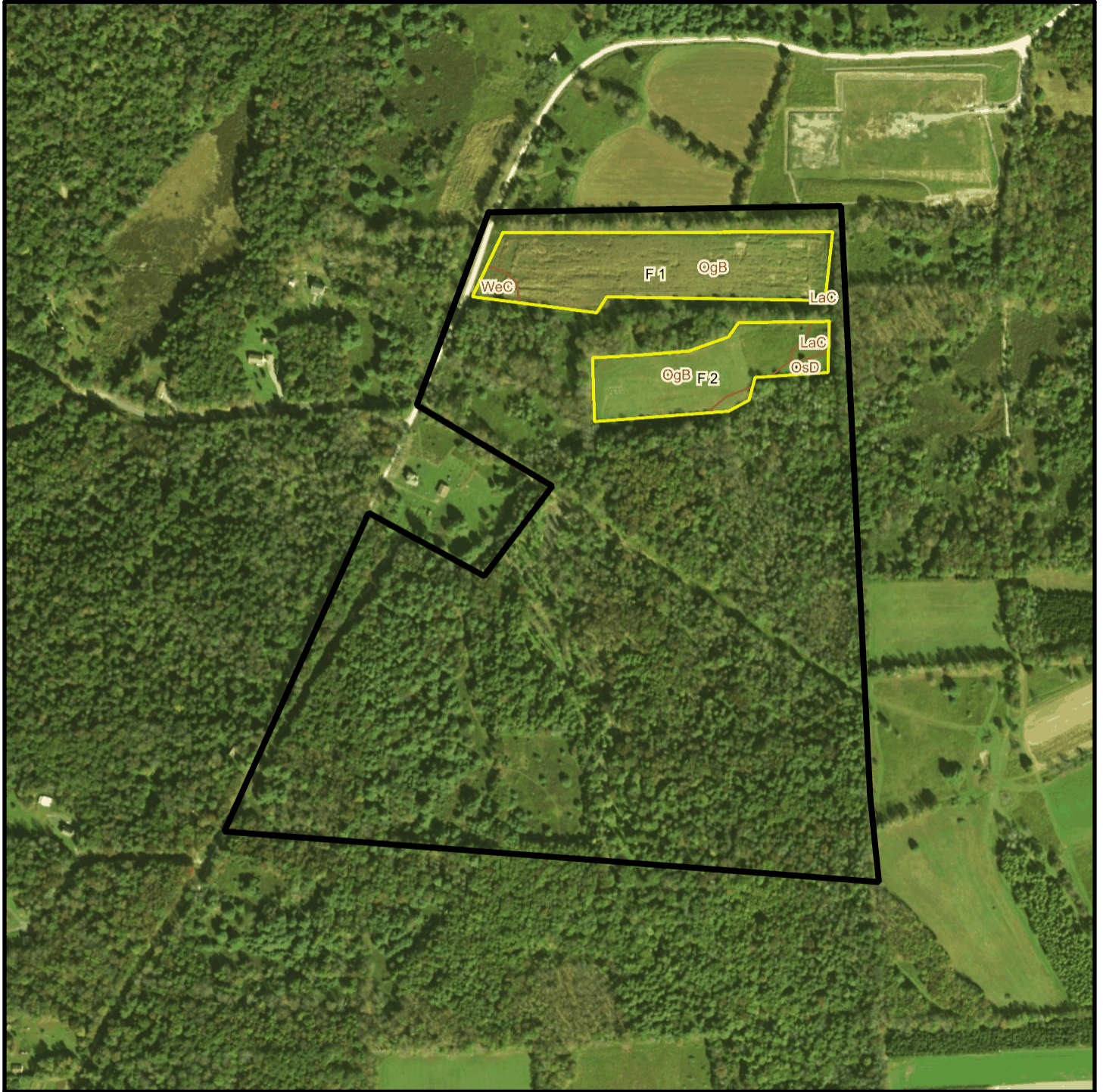


Bishcroft T 132 Soil Map



* 534.0 feet per inch



Soil Acreages By Field

Field	Label	Musym	Muname	Comp	%	Acres	Drainage Class	Farmland Class	Tfact	Kfact
F 1	F 1	LaC	Lackawanna channery loam, 12 to 20 percent slopes	Lackawanna	100	0.01	Well drained	Farmland of statewide importance	3	0.64
F 1	F 1	OgB	Oquaga channery loam, 3 to 12 percent slopes	Oquaga	100	6.91	Well drained	Farmland of statewide importance	3	0.64
F 1	F 1	WeC	Wellsboro channery loam, 8 to 15 percent slopes	Wellsboro	85	0.34	Moderately well drained	Farmland of statewide importance	3	0.32
F 2	F 2	LaC	Lackawanna channery loam, 12 to 20 percent slopes	Lackawanna	100	0.29	Well drained	Farmland of statewide importance	3	0.64
F 2	F 2	OgB	Oquaga channery loam, 3 to 12 percent slopes	Oquaga	100	3.86	Well drained	Farmland of statewide importance	3	0.64
F 2	F 2	OsD	Oquaga very stony loam, 12 to 30 percent slopes	Oquaga	100	0.39	Well drained	Not prime farmland	3	0.64

Soil Acreages For Farm

Musym	Muname	Comp	%	Acres	Drainage Class	Farmland Class	Tfact	Kfact
LaC	Lackawanna channery loam, 12 to 20 percent slopes	Lackawanna	100	0.3	Well drained	Farmland of statewide importance	3	0.64
OgB	Oquaga channery loam, 3 to 12 percent slopes	Oquaga	100	10.77	Well drained	Farmland of statewide importance	3	0.64
WeC	Wellsboro channery loam, 8 to 15 percent slopes	Wellsboro	85	0.34	Moderately well drained	Farmland of statewide importance	3	0.32
OsD	Oquaga very stony loam, 12 to 30 percent slopes	Oquaga	100	0.39	Well drained	Not prime farmland	3	0.64