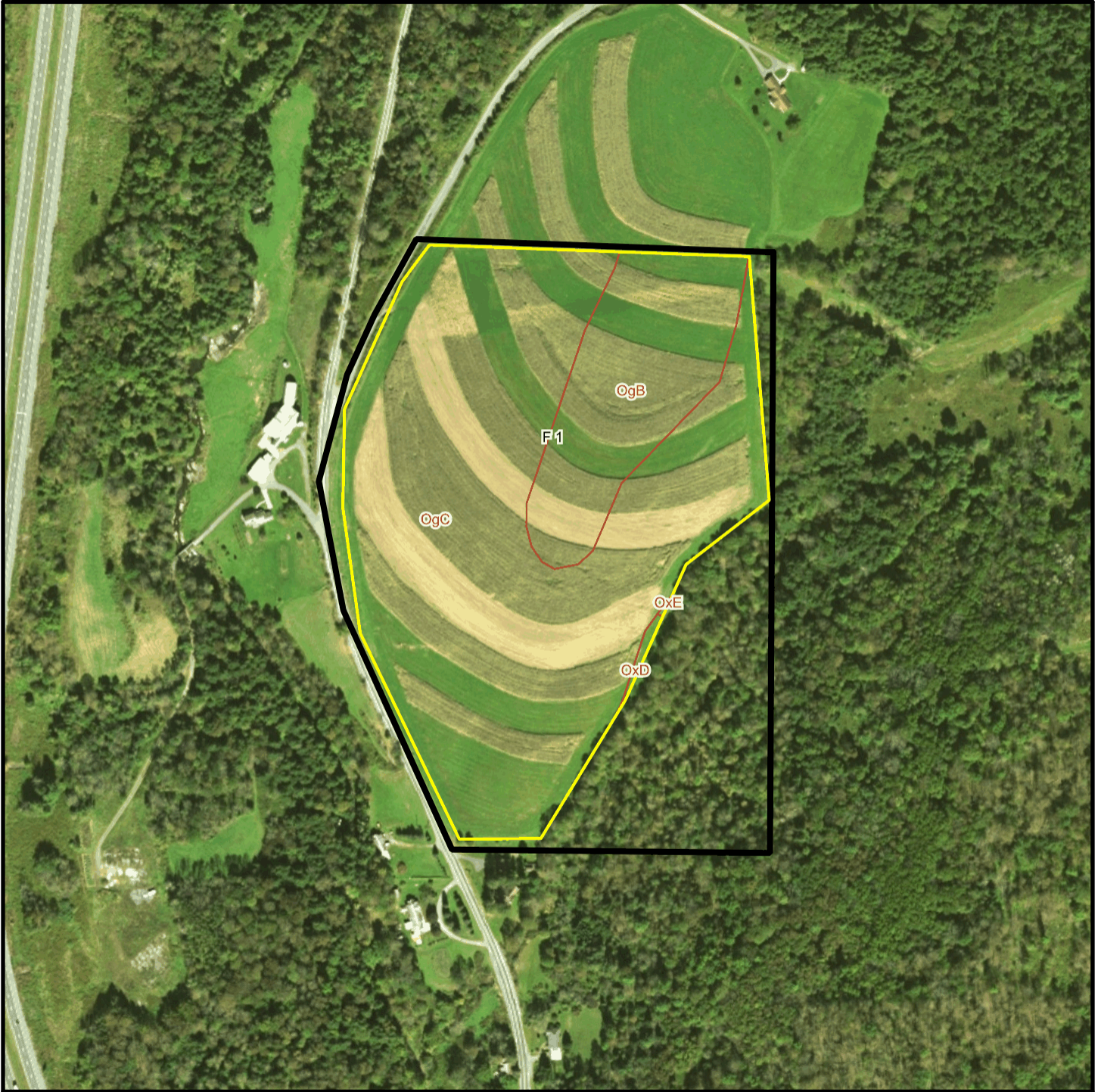
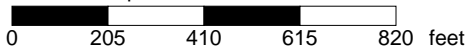


Bishcroft T 3609 Soil Map



* 410.0 feet per inch



Soil Acreages By Field

Field	Label	Musym	Muname	Comp	%	Acres	Drainage Class	Farmland Class	Tfact	Kfact
F 1	F 1	OgB	Oquaga channery loam, 3 to 8 percent slopes	Oquaga	85	6.69	Well drained	Farmland of statewide importance	3	0.37
F 1	F 1	OgC	Oquaga channery loam, 8 to 15 percent slopes	Oquaga	85	26.75	Well drained	Farmland of statewide importance	3	0.37
F 1	F 1	OxD	Oquaga and Lordstown very stony loams, 8 to 25 percent slopes	Lordstown	20	0.03	Well drained	Not prime farmland	3	0.43
F 1	F 1	OxD	Oquaga and Lordstown very stony loams, 8 to 25 percent slopes	Oquaga	65	0.09	Well drained	Not prime farmland	3	0.49
F 1	F 1	OxE	Oquaga and Lordstown very stony loams, 25 to 70 percent slopes	Oquaga	60	0.01	Well drained	Not prime farmland	3	0.49
F 1	F 1	OxE	Oquaga and Lordstown very stony loams, 25 to 70 percent slopes	Lordstown	30	< 0.01	Well drained	Not prime farmland	3	0.43

Soil Acreages For Farm

Musym	Muname	Comp	%	Acres	Drainage Class	Farmland Class	Tfact	Kfact
OgB	Oquaga channery loam, 3 to 8 percent slopes	Oquaga	85	6.69	Well drained	Farmland of statewide importance	3	0.37
OgC	Oquaga channery loam, 8 to 15 percent slopes	Oquaga	85	26.75	Well drained	Farmland of statewide importance	3	0.37
OxD	Oquaga and Lordstown very stony loams, 8 to 25 percent slopes	Lordstown	20	0.03	Well drained	Not prime farmland	3	0.43
OxD	Oquaga and Lordstown very stony loams, 8 to 25 percent slopes	Oquaga	65	0.09	Well drained	Not prime farmland	3	0.49

Musym	Muname	Comp	%	Acres	Drainage Class	Farmland Class	Tfact	Kfact
OxE	Oquaga and Lordstown very stony loams, 25 to 70 percent slopes	Oquaga	60	0.01	Well drained	Not prime farmland	3	0.49
OxE	Oquaga and Lordstown very stony loams, 25 to 70 percent slopes	Lordstown	30	0	Well drained	Not prime farmland	3	0.43