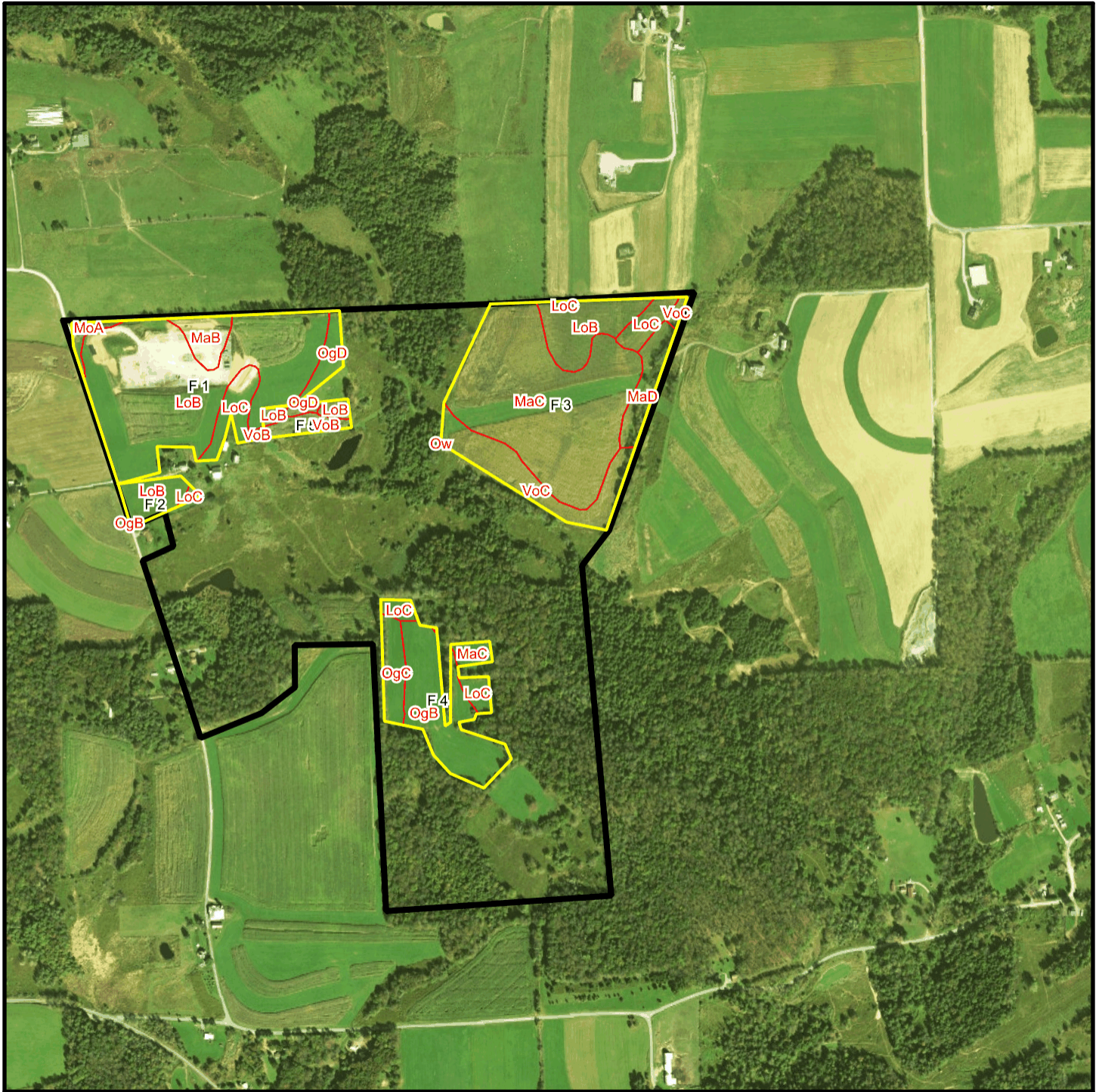
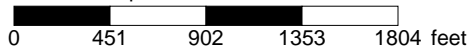


Bisherfot T 60 Soil Map



* 902.0 feet per inch



Soil Acreages By Field

Field	Label	Musym	Muname	Comp	%	Acres	Drainage Class	Farmland Class	Tfact	Kfact
F 1	F 1	LoB	Lordstown channery loam, 3 to 12 percent slopes	Lordstown	100	21.27	Well drained	Farmland of statewide importance	3	0.43
F 1	F 1	LoC	Lordstown channery loam, 12 to 20 percent slopes	Lordstown	100	2.06	Well drained	Farmland of statewide importance	3	0.43
F 1	F 1	MaB	Mardin channery silt loam, 3 to 8 percent slopes	Mardin	90	1.76	Moderately well drained	All areas are prime farmland	3	0.32
F 1	F 1	MoA	Morris gravelly silt loam, 0 to 3 percent slopes	Morris	70	0.59	Somewhat poorly drained	Farmland of statewide importance	3	0.55
F 1	F 1	OgD	Oquaga channery loam, 20 to 30 percent slopes	Oquaga	100	1.28	Well drained	Not prime farmland	3	0.64
F 1	F 1	VoB	Volusia channery silt loam, 3 to 8 percent slopes	Volusia	90	0.14	Somewhat poorly drained	Farmland of statewide importance	3	0.37
F 2	F 2	LoB	Lordstown channery loam, 3 to 12 percent slopes	Lordstown	100	1.99	Well drained	Farmland of statewide importance	3	0.43
F 2	F 2	LoC	Lordstown channery loam, 12 to 20 percent slopes	Lordstown	100	0.16	Well drained	Farmland of statewide importance	3	0.43
F 2	F 2	OgB	Oquaga channery loam, 3 to 12 percent slopes	Oquaga	100	< 0.01	Well drained	Farmland of statewide importance	3	0.64
F 3	F 3	LoB	Lordstown channery loam, 3 to 12 percent slopes	Lordstown	100	4	Well drained	Farmland of statewide importance	3	0.43
F 3	F 3	LoC	Lordstown channery loam, 12 to 20 percent slopes	Lordstown	100	1.48	Well drained	Farmland of statewide importance	3	0.43

Field	Label	Musym	Muname	Comp	%	Acres	Drainage Class	Farmland Class	Tfact	Kfact
F 3	F 3	MaC	Mardin channery silt loam, 8 to 15 percent slopes	Mardin	90	20.55	Moderately well drained	Farmland of statewide importance	3	0.32
F 3	F 3	MaD	Mardin channery silt loam, 15 to 25 percent slopes	Mardin	85	2.34	Moderately well drained	Not prime farmland	3	0.32
F 3	F 3	Ow	Orrville silt loam	Orrville	80	< 0.01	Somewhat poorly drained	Farmland of statewide importance	5	0.37
F 3	F 3	VoC	Volusia channery silt loam, 8 to 15 percent slopes	Volusia	90	5.5	Somewhat poorly drained	Farmland of statewide importance	3	0.37
F 4	F 4	LoC	Lordstown channery loam, 12 to 20 percent slopes	Lordstown	100	1.31	Well drained	Farmland of statewide importance	3	0.43
F 4	F 4	MaC	Mardin channery silt loam, 8 to 15 percent slopes	Mardin	90	0.73	Moderately well drained	Farmland of statewide importance	3	0.32
F 4	F 4	OgB	Oquaga channery loam, 3 to 12 percent slopes	Oquaga	100	7.14	Well drained	Farmland of statewide importance	3	0.64
F 4	F 4	OgC	Oquaga channery loam, 12 to 20 percent slopes	Oquaga	100	1.96	Well drained	Farmland of statewide importance	3	0.64
F 5	F 5	LoB	Lordstown channery loam, 3 to 12 percent slopes	Lordstown	100	0.78	Well drained	Farmland of statewide importance	3	0.43
F 5	F 5	OgD	Oquaga channery loam, 20 to 30 percent slopes	Oquaga	100	0.3	Well drained	Not prime farmland	3	0.64
F 5	F 5	VoB	Volusia channery silt loam, 3 to 8 percent slopes	Volusia	90	1.18	Somewhat poorly drained	Farmland of statewide importance	3	0.37

Soil Acreages For Farm

Musym	Muname	Comp	%	Acres	Drainage Class	Farmland Class	Tfact	Kfact
LoB	Lordstown channery loam, 3 to 12 percent slopes	Lordstown	100	28.04	Well drained	Farmland of statewide importance	3	0.43
LoC	Lordstown channery loam, 12 to 20 percent slopes	Lordstown	100	5.01	Well drained	Farmland of statewide importance	3	0.43
MaB	Mardin channery silt loam, 3 to 8 percent slopes	Mardin	90	1.76	Moderately well drained	All areas are prime farmland	3	0.32
MoA	Morris gravelly silt loam, 0 to 3 percent slopes	Morris	70	0.59	Somewhat poorly drained	Farmland of statewide importance	3	0.55
OgD	Oquaga channery loam, 20 to 30 percent slopes	Oquaga	100	1.58	Well drained	Not prime farmland	3	0.64
VoB	Volusia channery silt loam, 3 to 8 percent slopes	Volusia	90	1.32	Somewhat poorly drained	Farmland of statewide importance	3	0.37
OgB	Oquaga channery loam, 3 to 12 percent slopes	Oquaga	100	7.14	Well drained	Farmland of statewide importance	3	0.64
MaC	Mardin channery silt loam, 8 to 15 percent slopes	Mardin	90	21.28	Moderately well drained	Farmland of statewide importance	3	0.32
MaD	Mardin channery silt loam, 15 to 25 percent slopes	Mardin	85	2.34	Moderately well drained	Not prime farmland	3	0.32
Ow	Orrville silt loam	Orrville	80	0	Somewhat poorly drained	Farmland of statewide importance	5	0.37
VoC	Volusia channery silt loam, 8 to 15 percent slopes	Volusia	90	5.5	Somewhat poorly drained	Farmland of statewide importance	3	0.37
OgC	Oquaga channery loam, 12 to 20 percent slopes	Oquaga	100	1.96	Well drained	Farmland of statewide importance	3	0.64