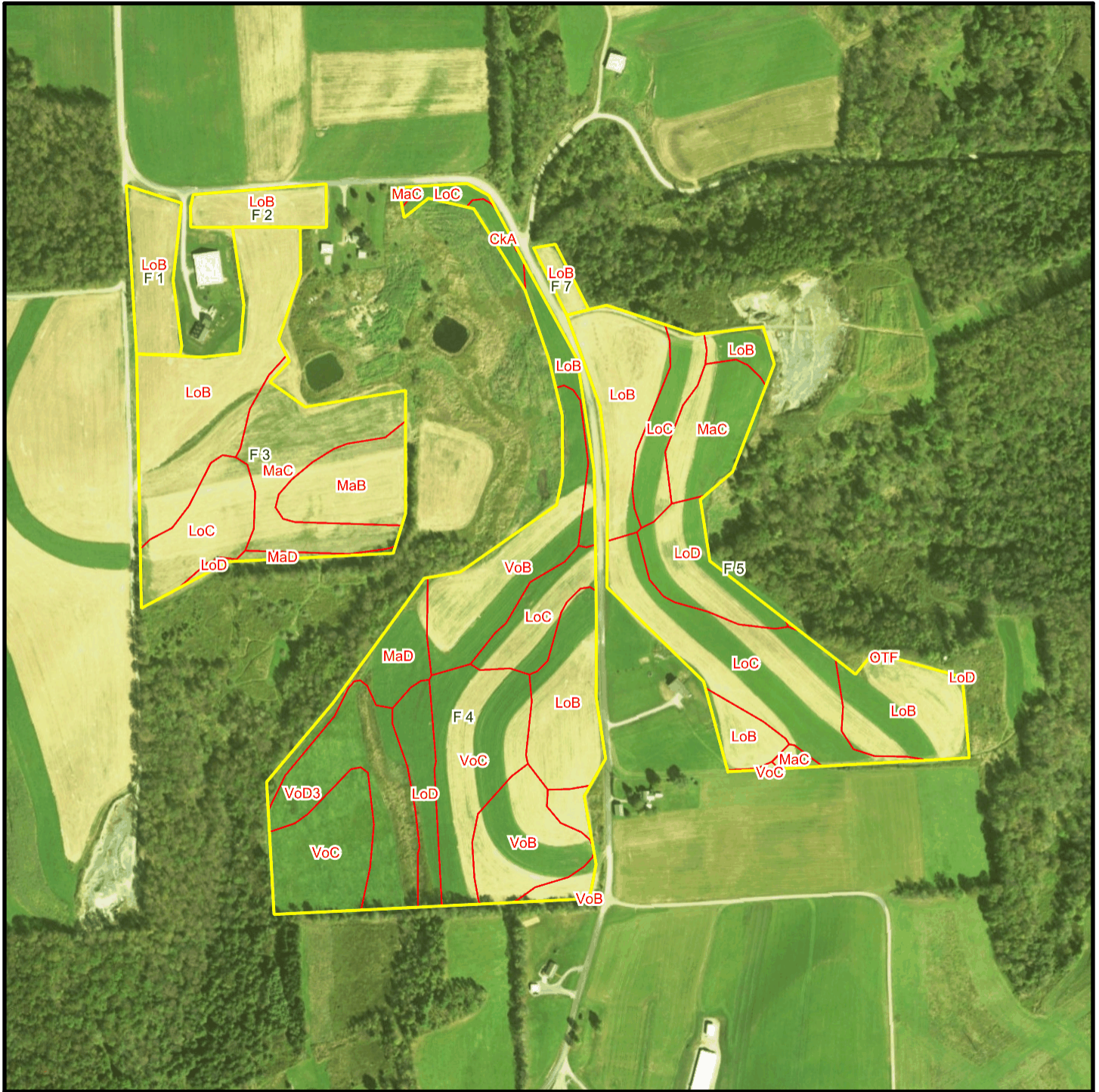


Bishcroft T 6355 Soil Map



* 534.0 feet per inch



Soil Acreages By Field

Field	Label	Musym	Muname	Comp	%	Acres	Drainage Class	Farmland Class	Tfact	Kfact
F 1	F 1	LoB	Lordstown channery loam, 3 to 12 percent slopes	Lordstown	100	2.29	Well drained	Farmland of statewide importance	3	0.43
F 2	F 2	LoB	Lordstown channery loam, 3 to 12 percent slopes	Lordstown	100	1.59	Well drained	Farmland of statewide importance	3	0.43
F 3	F 3	LoB	Lordstown channery loam, 3 to 12 percent slopes	Lordstown	100	7.15	Well drained	Farmland of statewide importance	3	0.43
F 3	F 3	LoC	Lordstown channery loam, 12 to 20 percent slopes	Lordstown	100	2.8	Well drained	Farmland of statewide importance	3	0.43
F 3	F 3	LoD	Lordstown channery loam, 20 to 30 percent slopes	Lordstown	100	0.1	Well drained	Not prime farmland	3	0.43
F 3	F 3	MaB	Mardin channery silt loam, 3 to 8 percent slopes	Mardin	90	2.82	Moderately well drained	All areas are prime farmland	3	0.32
F 3	F 3	MaC	Mardin channery silt loam, 8 to 15 percent slopes	Mardin	90	4.7	Moderately well drained	Farmland of statewide importance	3	0.32
F 3	F 3	MaD	Mardin channery silt loam, 15 to 25 percent slopes	Mardin	85	0.25	Moderately well drained	Not prime farmland	3	0.32
F 4	F 4	CkA	Chippewa silt loam, 0 to 3 percent slopes	Chippewa	95	0.45	Poorly drained	Not prime farmland	3	0.32
F 4	F 4	LoB	Lordstown channery loam, 3 to 12 percent slopes	Lordstown	100	4.63	Well drained	Farmland of statewide importance	3	0.43
F 4	F 4	LoC	Lordstown channery loam, 12 to 20 percent slopes	Lordstown	100	2.49	Well drained	Farmland of statewide importance	3	0.43
F 4	F 4	LoD	Lordstown channery loam, 20 to 30 percent slopes	Lordstown	100	1.84	Well drained	Not prime farmland	3	0.43

Field	Label	Musym	Muname	Comp	%	Acres	Drainage Class	Farmland Class	Tfact	Kfact
F 4	F 4	MaC	Mardin channery silt loam, 8 to 15 percent slopes	Mardin	90	0.07	Moderately well drained	Farmland of statewide importance	3	0.32
F 4	F 4	MaD	Mardin channery silt loam, 15 to 25 percent slopes	Mardin	85	2.02	Moderately well drained	Not prime farmland	3	0.32
F 4	F 4	VoB	Volusia channery silt loam, 3 to 8 percent slopes	Volusia	90	7.72	Somewhat poorly drained	Farmland of statewide importance	3	0.37
F 4	F 4	VoC	Volusia channery silt loam, 8 to 15 percent slopes	Volusia	90	9.2	Somewhat poorly drained	Farmland of statewide importance	3	0.37
F 4	F 4	VoD3	Volusia channery silt loam, 15 to 25 percent slopes, eroded	Volusia	90	4.64	Somewhat poorly drained	Not prime farmland	3	0.37
F 5	F 5	LoB	Lordstown channery loam, 3 to 12 percent slopes	Lordstown	100	9.01	Well drained	Farmland of statewide importance	3	0.43
F 5	F 5	LoC	Lordstown channery loam, 12 to 20 percent slopes	Lordstown	100	8.17	Well drained	Farmland of statewide importance	3	0.43
F 5	F 5	LoD	Lordstown channery loam, 20 to 30 percent slopes	Lordstown	100	2.6	Well drained	Not prime farmland	3	0.43
F 5	F 5	MaC	Mardin channery silt loam, 8 to 15 percent slopes	Mardin	90	2.98	Moderately well drained	Farmland of statewide importance	3	0.32
F 5	F 5	OTF	Oquaga and Lordstown soils, very steep	Oquaga	48	0.02	Well drained	Not prime farmland	3	0.37
F 5	F 5	OTF	Oquaga and Lordstown soils, very steep	Lordstown	22	0.01	Well drained	Not prime farmland	3	0.28
F 5	F 5	VoC	Volusia channery silt loam, 8 to 15 percent slopes	Volusia	90	0.04	Somewhat poorly drained	Farmland of statewide importance	3	0.37

Field	Label	Musym	Muname	Comp	%	Acres	Drainage Class	Farmland Class	Tfact	Kfact
F 7	F 7	LoB	Lordstown channery loam, 3 to 12 percent slopes	Lordstown	100	0.5	Well drained	Farmland of statewide importance	3	0.43

Soil Acreages For Farm

Musym	Muname	Comp	%	Acres	Drainage Class	Farmland Class	Tfact	Kfact
LoB	Lordstown channery loam, 3 to 12 percent slopes	Lordstown	100	25.17	Well drained	Farmland of statewide importance	3	0.43
LoC	Lordstown channery loam, 12 to 20 percent slopes	Lordstown	100	13.46	Well drained	Farmland of statewide importance	3	0.43
LoD	Lordstown channery loam, 20 to 30 percent slopes	Lordstown	100	4.54	Well drained	Not prime farmland	3	0.43
MaB	Mardin channery silt loam, 3 to 8 percent slopes	Mardin	90	2.82	Moderately well drained	All areas are prime farmland	3	0.32
MaC	Mardin channery silt loam, 8 to 15 percent slopes	Mardin	90	7.75	Moderately well drained	Farmland of statewide importance	3	0.32
MaD	Mardin channery silt loam, 15 to 25 percent slopes	Mardin	85	2.27	Moderately well drained	Not prime farmland	3	0.32
CkA	Chippewa silt loam, 0 to 3 percent slopes	Chippewa	95	0.45	Poorly drained	Not prime farmland	3	0.32
VoB	Volusia channery silt loam, 3 to 8 percent slopes	Volusia	90	7.72	Somewhat poorly drained	Farmland of statewide importance	3	0.37
VoC	Volusia channery silt loam, 8 to 15 percent slopes	Volusia	90	9.24	Somewhat poorly drained	Farmland of statewide importance	3	0.37
VoD3	Volusia channery silt loam, 15 to 25 percent slopes, eroded	Volusia	90	4.64	Somewhat poorly drained	Not prime farmland	3	0.37

Musym	Muname	Comp	%	Acres	Drainage Class	Farmland Class	Tfact	Kfact
OTF	Oquaga and Lordstown soils, very steep	Oquaga	48	0.02	Well drained	Not prime farmland	3	0.37
OTF	Oquaga and Lordstown soils, very steep	Lordstown	22	0.01	Well drained	Not prime farmland	3	0.28