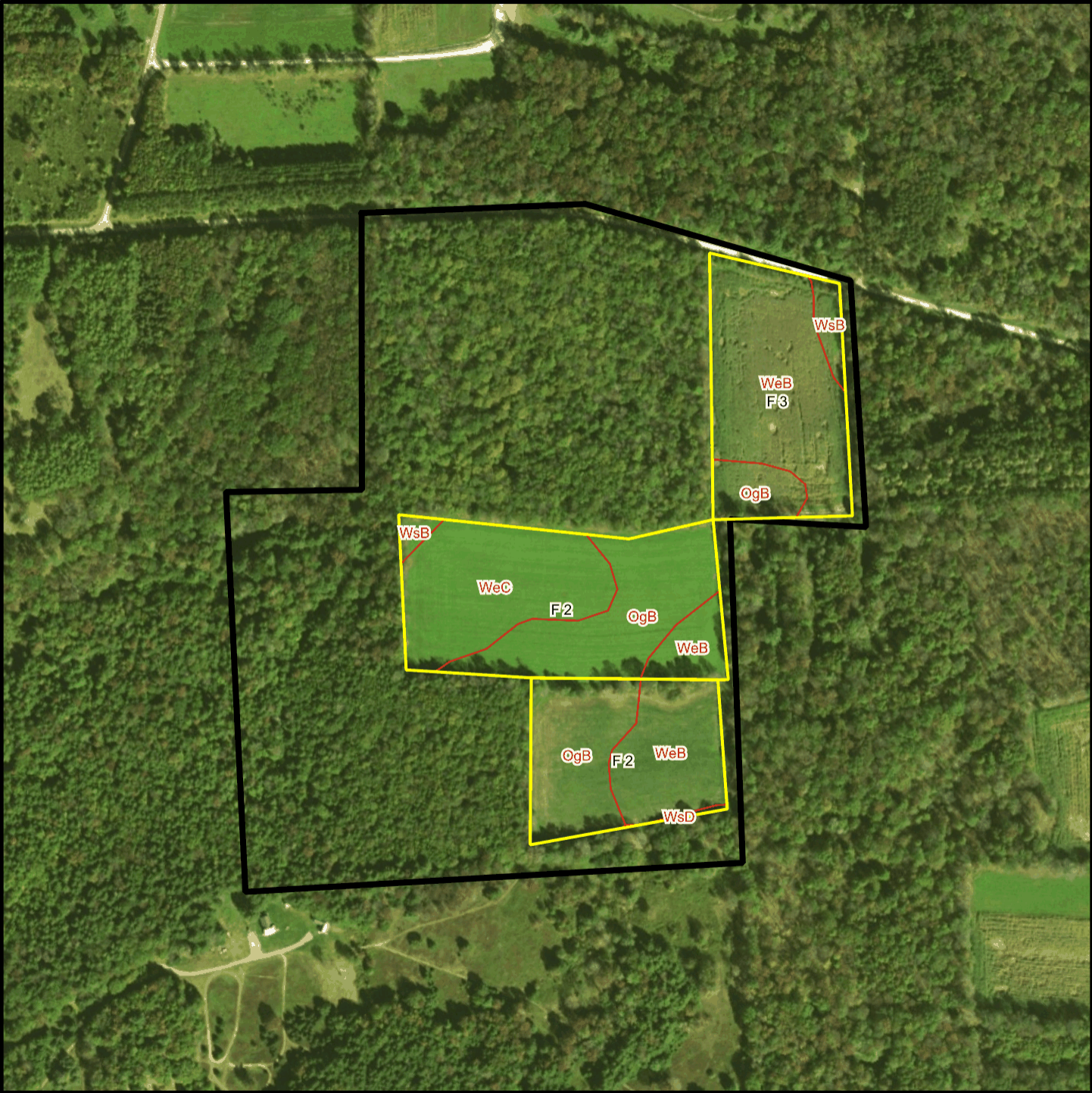


Bishcroft T 7134



* 410.0 feet per inch
0 205 410 615 820 feet



Soil Acreages By Field

Field	Label	Musym	Muname	Comp	%	Acres	Drainage Class	Farmland Class	Tfact	Kfact
F 2	F 2	OgB	Oquaga channery loam, 3 to 12 percent slopes	Oquaga	100	6.24	Well drained	Farmland of statewide importance	3	0.64
F 2	F 2	WeB	Wellsboro channery loam, 3 to 8 percent slopes	Wellsboro	80	3.33	Moderately well drained	All areas are prime farmland	3	0.32
F 2	F 2	WeC	Wellsboro channery loam, 8 to 15 percent slopes	Wellsboro	85	4.06	Moderately well drained	Farmland of statewide importance	3	0.32
F 2	F 2	WsB	Wellsboro very stony loam, 0 to 8 percent slopes	Wellsboro	85	0.2	Moderately well drained	Not prime farmland	3	0.32
F 2	F 2	WsD	Wellsboro very stony loam, 8 to 25 percent slopes	Wellsboro	85	0.05	Moderately well drained	Not prime farmland	3	0.32
F 3	F 3	OgB	Oquaga channery loam, 3 to 12 percent slopes	Oquaga	100	0.88	Well drained	Farmland of statewide importance	3	0.64
F 3	F 3	WeB	Wellsboro channery loam, 3 to 8 percent slopes	Wellsboro	80	4.82	Moderately well drained	All areas are prime farmland	3	0.32
F 3	F 3	WsB	Wellsboro very stony loam, 0 to 8 percent slopes	Wellsboro	85	0.42	Moderately well drained	Not prime farmland	3	0.32

Soil Acreages For Farm

Musym	Muname	Comp	%	Acres	Drainage Class	Farmland Class	Tfact	Kfact
OgB	Oquaga channery loam, 3 to 12 percent slopes	Oquaga	100	7.12	Well drained	Farmland of statewide importance	3	0.64
WeB	Wellsboro channery loam, 3 to 8 percent slopes	Wellsboro	80	8.15	Moderately well drained	All areas are prime farmland	3	0.32
WsB	Wellsboro very stony loam, 0 to 8 percent slopes	Wellsboro	85	0.62	Moderately well drained	Not prime farmland	3	0.32

Musym	Muname	Comp	%	Acres	Drainage Class	Farmland Class	Tfact	Kfact
WeC	Wellsboro channery loam, 8 to 15 percent slopes	Wellsboro	85	4.06	Moderately well drained	Farmland of statewide importance	3	0.32
WsD	Wellsboro very stony loam, 8 to 25 percent slopes	Wellsboro	85	0.05	Moderately well drained	Not prime farmland	3	0.32