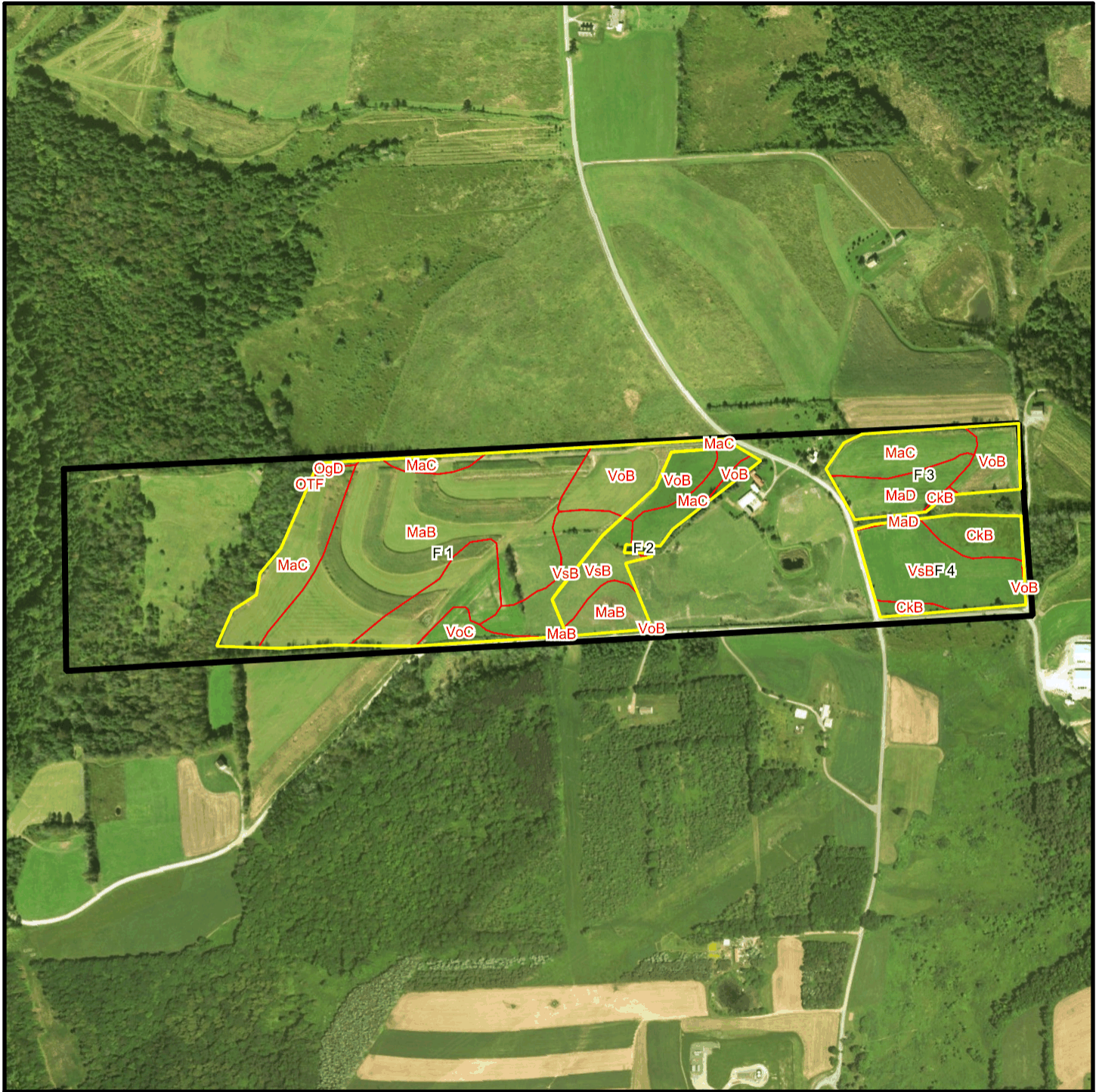
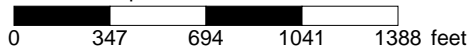


Bishcroft T 75 Soil Map



* 694.0 feet per inch



Soil Acreages By Field

Field	Label	Musym	Muname	Comp	%	Acres	Drainage Class	Farmland Class	Tfact	Kfact
F 1	F 1	MaB	Mardin channery silt loam, 3 to 8 percent slopes	Mardin	90	17.65	Moderately well drained	All areas are prime farmland	3	0.32
F 1	F 1	MaC	Mardin channery silt loam, 8 to 15 percent slopes	Mardin	90	8.51	Moderately well drained	Farmland of statewide importance	3	0.32
F 1	F 1	OgD	Oquaga channery loam, 20 to 30 percent slopes	Oquaga	100	0.11	Well drained	Not prime farmland	3	0.64
F 1	F 1	OTF	Oquaga and Lordstown soils, very steep	Oquaga	48	0.01	Well drained	Not prime farmland	3	0.37
F 1	F 1	OTF	Oquaga and Lordstown soils, very steep	Lordstown	22	0.01	Well drained	Not prime farmland	3	0.28
F 1	F 1	VoB	Volusia channery silt loam, 3 to 8 percent slopes	Volusia	90	3.15	Somewhat poorly drained	Farmland of statewide importance	3	0.37
F 1	F 1	VoC	Volusia channery silt loam, 8 to 15 percent slopes	Volusia	90	0.95	Somewhat poorly drained	Farmland of statewide importance	3	0.37
F 1	F 1	VsB	Volusia channery silt loam, 0 to 8 percent slopes, extremely stony	Volusia	90	2.74	Somewhat poorly drained	Not prime farmland	3	0.37
F 2	F 2	MaB	Mardin channery silt loam, 3 to 8 percent slopes	Mardin	90	1.6	Moderately well drained	All areas are prime farmland	3	0.32
F 2	F 2	MaC	Mardin channery silt loam, 8 to 15 percent slopes	Mardin	90	1.65	Moderately well drained	Farmland of statewide importance	3	0.32
F 2	F 2	VoB	Volusia channery silt loam, 3 to 8 percent slopes	Volusia	90	1.72	Somewhat poorly drained	Farmland of statewide importance	3	0.37
F 2	F 2	VsB	Volusia channery silt loam, 0 to 8 percent slopes, extremely stony	Volusia	90	1.97	Somewhat poorly drained	Not prime farmland	3	0.37

Field	Label	Musym	Muname	Comp	%	Acres	Drainage Class	Farmland Class	Tfact	Kfact
F 3	F 3	CkB	Chippewa silt loam, 3 to 8 percent slopes	Chippewa	95	0.1	Poorly drained	Not prime farmland	3	0.32
F 3	F 3	MaC	Mardin channery silt loam, 8 to 15 percent slopes	Mardin	90	2.81	Moderately well drained	Farmland of statewide importance	3	0.32
F 3	F 3	MaD	Mardin channery silt loam, 15 to 25 percent slopes	Mardin	85	2.39	Moderately well drained	Not prime farmland	3	0.32
F 3	F 3	VoB	Volusia channery silt loam, 3 to 8 percent slopes	Volusia	90	1.84	Somewhat poorly drained	Farmland of statewide importance	3	0.37
F 4	F 4	CkB	Chippewa silt loam, 3 to 8 percent slopes	Chippewa	95	2.26	Poorly drained	Not prime farmland	3	0.32
F 4	F 4	MaD	Mardin channery silt loam, 15 to 25 percent slopes	Mardin	85	0.05	Moderately well drained	Not prime farmland	3	0.32
F 4	F 4	VoB	Volusia channery silt loam, 3 to 8 percent slopes	Volusia	90	0.02	Somewhat poorly drained	Farmland of statewide importance	3	0.37
F 4	F 4	VsB	Volusia channery silt loam, 0 to 8 percent slopes, extremely stony	Volusia	90	5.34	Somewhat poorly drained	Not prime farmland	3	0.37

Soil Acreages For Farm

Musym	Muname	Comp	%	Acres	Drainage Class	Farmland Class	Tfact	Kfact
MaB	Mardin channery silt loam, 3 to 8 percent slopes	Mardin	90	19.25	Moderately well drained	All areas are prime farmland	3	0.32
MaC	Mardin channery silt loam, 8 to 15 percent slopes	Mardin	90	12.97	Moderately well drained	Farmland of statewide importance	3	0.32
OgD	Oquaga channery loam, 20 to 30 percent slopes	Oquaga	100	0.11	Well drained	Not prime farmland	3	0.64
OTF	Oquaga and Lordstown soils, very steep	Oquaga	48	0.01	Well drained	Not prime farmland	3	0.37

Musym	Muname	Comp	%	Acres	Drainage Class	Farmland Class	Tfact	Kfact
OTF	Oquaga and Lordstown soils, very steep	Lordstown	22	0.01	Well drained	Not prime farmland	3	0.28
VoB	Volusia channery silt loam, 3 to 8 percent slopes	Volusia	90	6.73	Somewhat poorly drained	Farmland of statewide importance	3	0.37
VoC	Volusia channery silt loam, 8 to 15 percent slopes	Volusia	90	0.95	Somewhat poorly drained	Farmland of statewide importance	3	0.37
VsB	Volusia channery silt loam, 0 to 8 percent slopes, extremely stony	Volusia	90	10.05	Somewhat poorly drained	Not prime farmland	3	0.37
CkB	Chippewa silt loam, 3 to 8 percent slopes	Chippewa	95	2.36	Poorly drained	Not prime farmland	3	0.32
MaD	Mardin channery silt loam, 15 to 25 percent slopes	Mardin	85	2.44	Moderately well drained	Not prime farmland	3	0.32