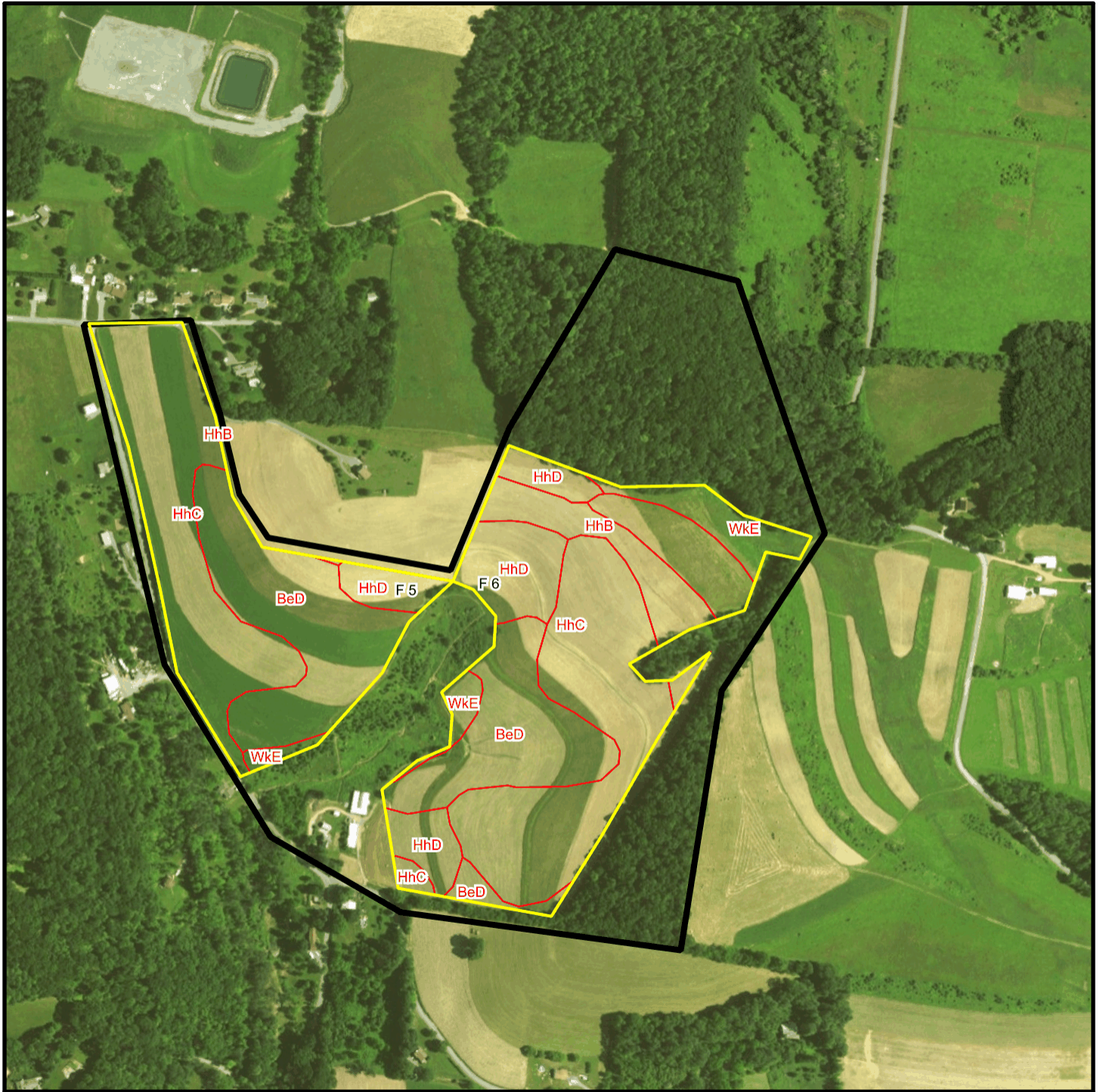
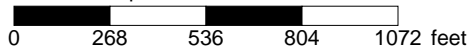


Harvey T 3428 Soil Map



* 536.0 feet per inch



Soil Acreages By Field

Field	Label	Musym	Muname	Comp	%	Acres	Drainage Class	Farmland Class	Tfact	Kfact
F 5	F 5	BeD	Berks channery silt loam, 15 to 25 percent slopes	Berks	100	8.23	Well drained	Not prime farmland	3	0.32
F 5	F 5	HhB	Hartleton channery silt loam, 3 to 8 percent slopes	Hartleton	75	0.01	Well drained	Farmland of statewide importance	3	0.24
F 5	F 5	HhC	Hartleton channery silt loam, 8 to 15 percent slopes	Hartleton	90	10.07	Well drained	Farmland of statewide importance	3	0.24
F 5	F 5	HhD	Hartleton channery silt loam, 15 to 25 percent slopes	Hartleton	90	1.15	Well drained	Not prime farmland	3	0.24
F 5	F 5	WkE	Weikert and Klinesville shaly silt loams, 25 to 80 percent slopes	Weikert	55	0.21	Somewhat excessively drained	Not prime farmland	2	0.32
F 5	F 5	WkE	Weikert and Klinesville shaly silt loams, 25 to 80 percent slopes	Klinesville	35	0.13	Somewhat excessively drained	Not prime farmland	2	0.28
F 6	F 6	BeD	Berks channery silt loam, 15 to 25 percent slopes	Berks	100	6.75	Well drained	Not prime farmland	3	0.32
F 6	F 6	HhB	Hartleton channery silt loam, 3 to 8 percent slopes	Hartleton	75	3.18	Well drained	Farmland of statewide importance	3	0.24
F 6	F 6	HhC	Hartleton channery silt loam, 8 to 15 percent slopes	Hartleton	90	13.59	Well drained	Farmland of statewide importance	3	0.24
F 6	F 6	HhD	Hartleton channery silt loam, 15 to 25 percent slopes	Hartleton	90	4.93	Well drained	Not prime farmland	3	0.24
F 6	F 6	WkE	Weikert and Klinesville shaly silt loams, 25 to 80 percent slopes	Weikert	55	1.58	Somewhat excessively drained	Not prime farmland	2	0.32
F 6	F 6	WkE	Weikert and Klinesville shaly silt loams, 25 to 80 percent slopes	Klinesville	35	1	Somewhat excessively drained	Not prime farmland	2	0.28

Soil Acreages For Farm

Musym	Muname	Comp	%	Acres	Drainage Class	Farmland Class	Tfact	Kfact
BeD	Berks channery silt loam, 15 to 25 percent slopes	Berks	100	14.98	Well drained	Not prime farmland	3	0.32
HhB	Hartleton channery silt loam, 3 to 8 percent slopes	Hartleton	75	3.19	Well drained	Farmland of statewide importance	3	0.24
HhC	Hartleton channery silt loam, 8 to 15 percent slopes	Hartleton	90	23.66	Well drained	Farmland of statewide importance	3	0.24
HhD	Hartleton channery silt loam, 15 to 25 percent slopes	Hartleton	90	6.08	Well drained	Not prime farmland	3	0.24
WkE	Weikert and Klinsville shaly silt loams, 25 to 80 percent slopes	Weikert	55	1.79	Somewhat excessively drained	Not prime farmland	2	0.32
WkE	Weikert and Klinsville shaly silt loams, 25 to 80 percent slopes	Klinsville	35	1.13	Somewhat excessively drained	Not prime farmland	2	0.28